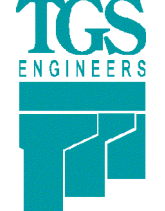

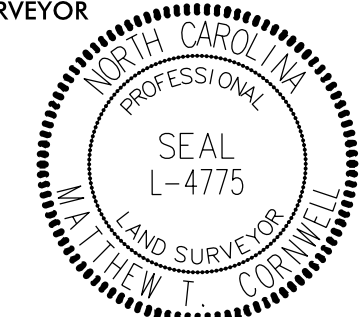
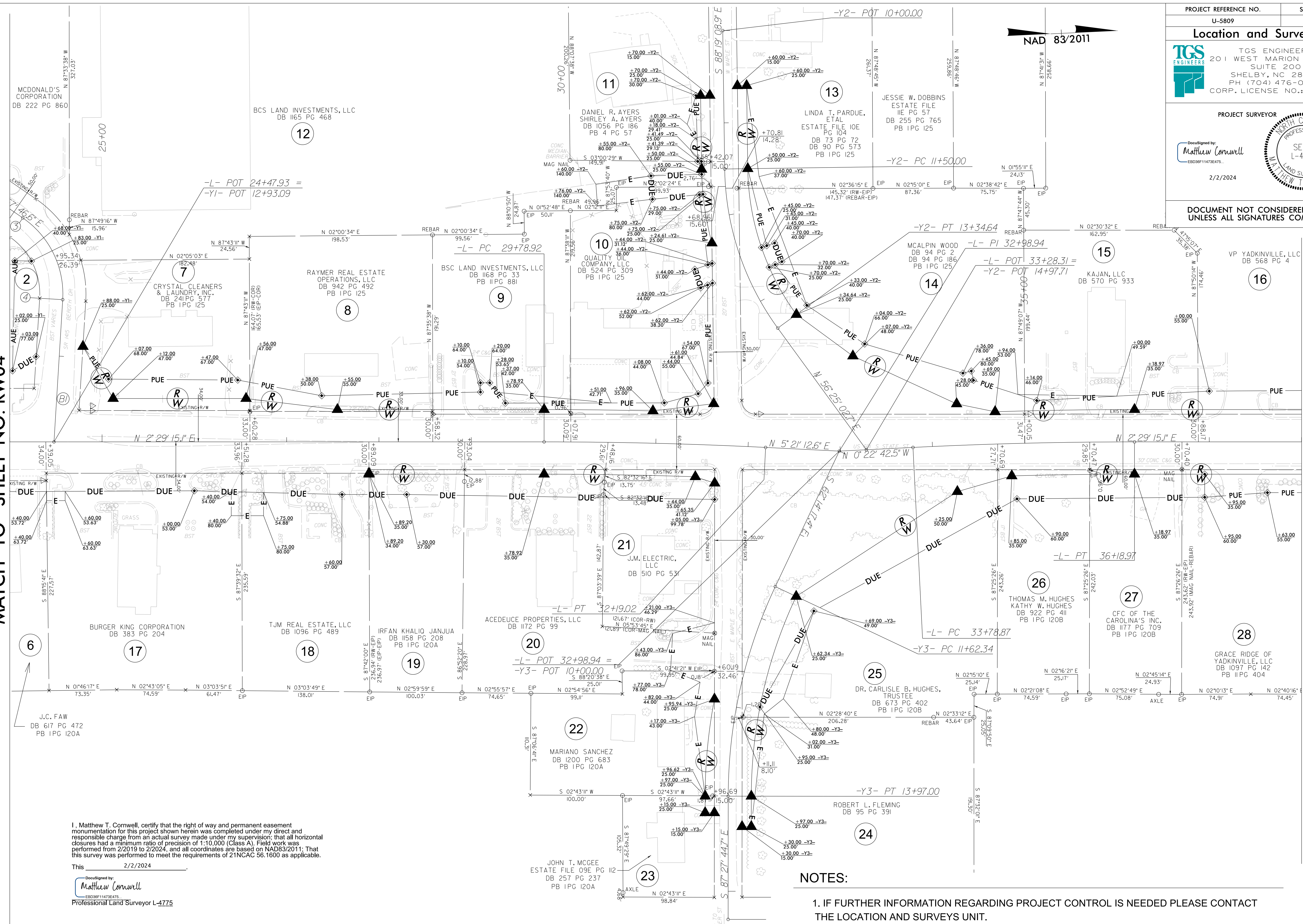


PROJECT REFERENCE NO.	SHEET NO.
U-5809	RW05
Location and Surveys	
 TGS ENGINEERS 201 WEST MARION STREET SUITE 200 SHELBY, NC 28150 PH (704) 476-0003 CORP. LICENSE NO.: C-0275	
PROJECT SURVEYOR	
Documented by:  EBO09F11473E475...	
	
2/2/2024	

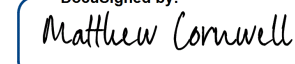
DOCUMENT NOT CONSIDERED FINAL UNLESS ALL SIGNATURES COMPLETED

MATCH LINE STA. -L- 24 + 00.00
MATCH TO SHEET NO. RW04

MATCH LINE STA. -L- 38 + 00.00
MATCH TO SHEET NO. RW06



I, Matthew T. Cornwell, certify that the right of way and permanent easement monumentation for this project shown herein was completed under my direct and responsible charge from an actual survey made under my supervision; that all horizontal closures had a minimum ratio of precision of 1:10,000 (Class A). Field work was performed from 2/2019 to 2/2024, and all coordinates are based on NAD83/2011; That this survey was performed to meet the requirements of 21NCAC 56.1600 as applicable.

This 2/2/2024
 Documented by:

 EBO09F11473E475...
 Professional Land Surveyor L-4775

NOTES:

1. IF FURTHER INFORMATION REGARDING PROJECT CONTROL IS NEEDED PLEASE CONTACT THE LOCATION AND SURVEYS UNIT.
2. PROJECT CONTROL WAS ESTABLISHED USING GNSS, THE GLOBAL NAVIGATION SATELLITE SYSTEM.
3. RIGHT OF WAY MONUMENTATION ESTABLISHED FEBRUARY 2019 TO FEBRUARY 2024.

REVISIONS

02-FEB-2024 10:50
 S:\S\Projects\ncdot\U-5809\RM Revision 2024\U5809_1.s_rw05.dgn
 mcornewell
 A:\MORNEWELL\TOP