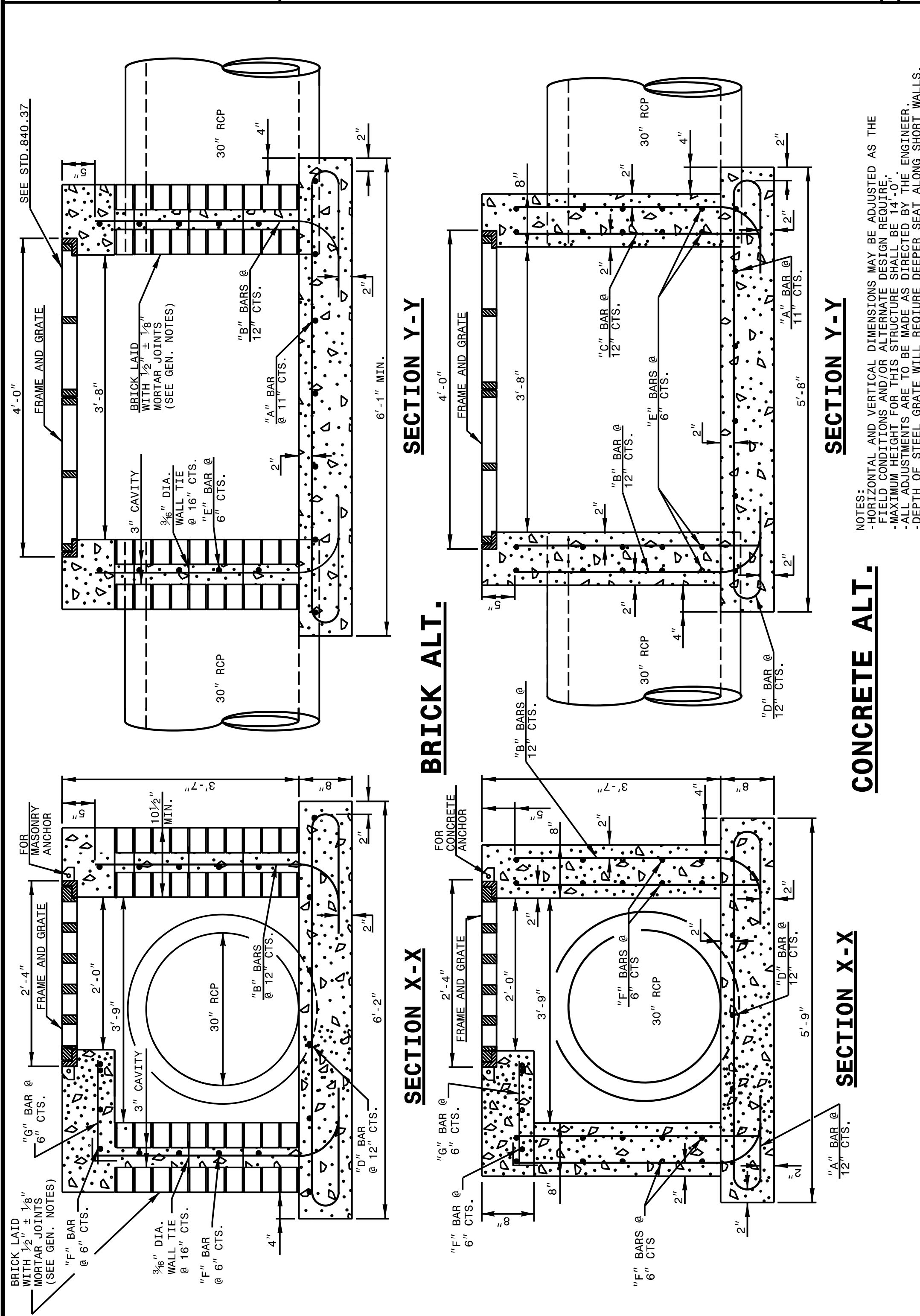


STATE OF NORTH CAROLINA  
DEPT. OF TRANSPORTATION  
DIVISION OF HIGHWAYS  
RALEIGH, N.C.

ENGLISH DETAIL DRAWING FOR  
TRAFFIC BEARING DROP INLET  
FOR DOUBLE FRAME AND GRATES

SHEET 1 OF 2  
**840D35**



STATE OF NORTH CAROLINA  
DEPT. OF TRANSPORTATION  
DIVISION OF HIGHWAYS  
RALEIGH, N.C.

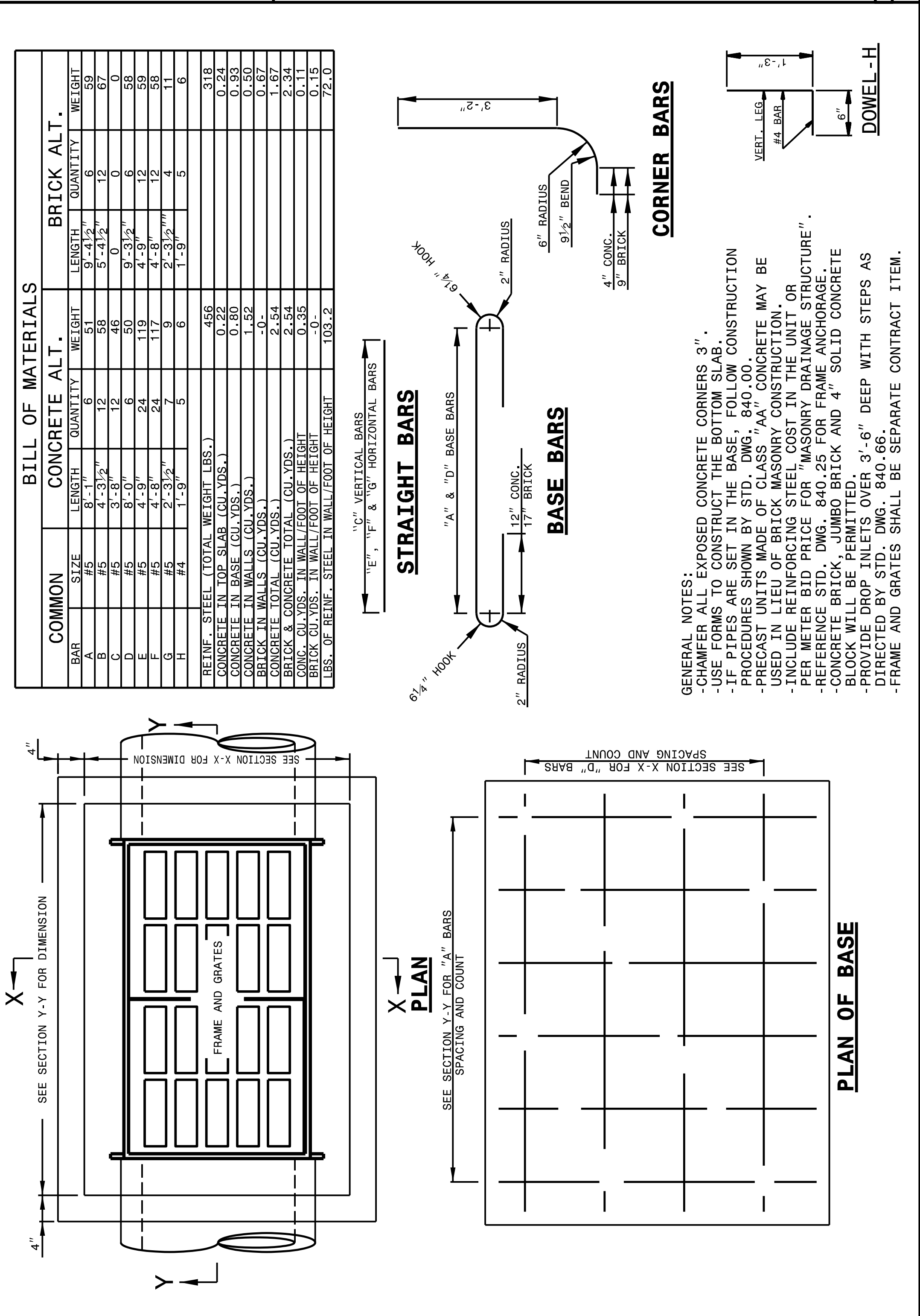
ENGLISH DETAIL DRAWING FOR  
TRAFFIC BEARING DROP INLET  
FOR DOUBLE FRAME AND GRATES

SHEET 1 OF 2  
**840D35**

STATE OF NORTH CAROLINA  
DEPT. OF TRANSPORTATION  
DIVISION OF HIGHWAYS  
RALEIGH, N.C.

ENGLISH DETAIL DRAWING FOR  
TRAFFIC BEARING DROP INLET  
FOR DOUBLE FRAME AND GRATES

SHEET 2 OF 2  
**840D35**

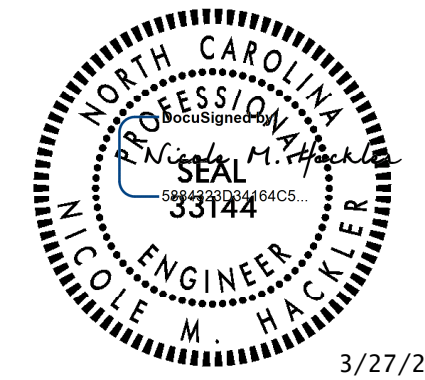


STATE OF NORTH CAROLINA  
DEPT. OF TRANSPORTATION  
DIVISION OF HIGHWAYS  
RALEIGH, N.C.

ENGLISH DETAIL DRAWING FOR  
TRAFFIC BEARING DROP INLET  
FOR DOUBLE FRAME AND GRATES

SHEET 2 OF 2  
**840D35**

\$\$\$\$\$SYTIME\$\$\$\$\$  
 \$\$\$DDON\$\$\$\$\$  
 \$\$\$USERNAME\$\$\$



3/27/2024

CONTRACT STANDARDS  
AND DEVELOPMENT UNIT  
Office 919-250-4128 FAX 919-250-4119

**SEE PLATE FOR TITLE**

ORIGINAL BY: T.S. Spell DATE: Sept. 2000  
 MODIFIED BY: DATE:  
 CHECKED BY: DATE:  
 FILE SPEC.: w:\details\metric\stand\840d35m&e.dgn