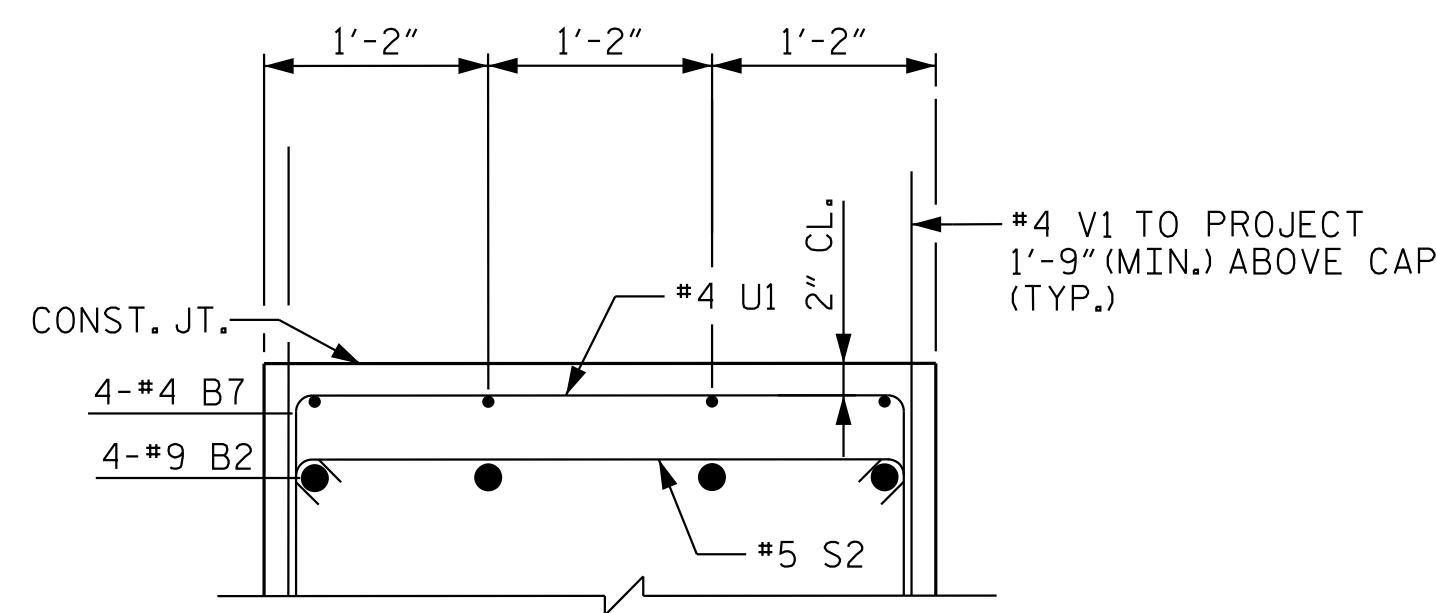


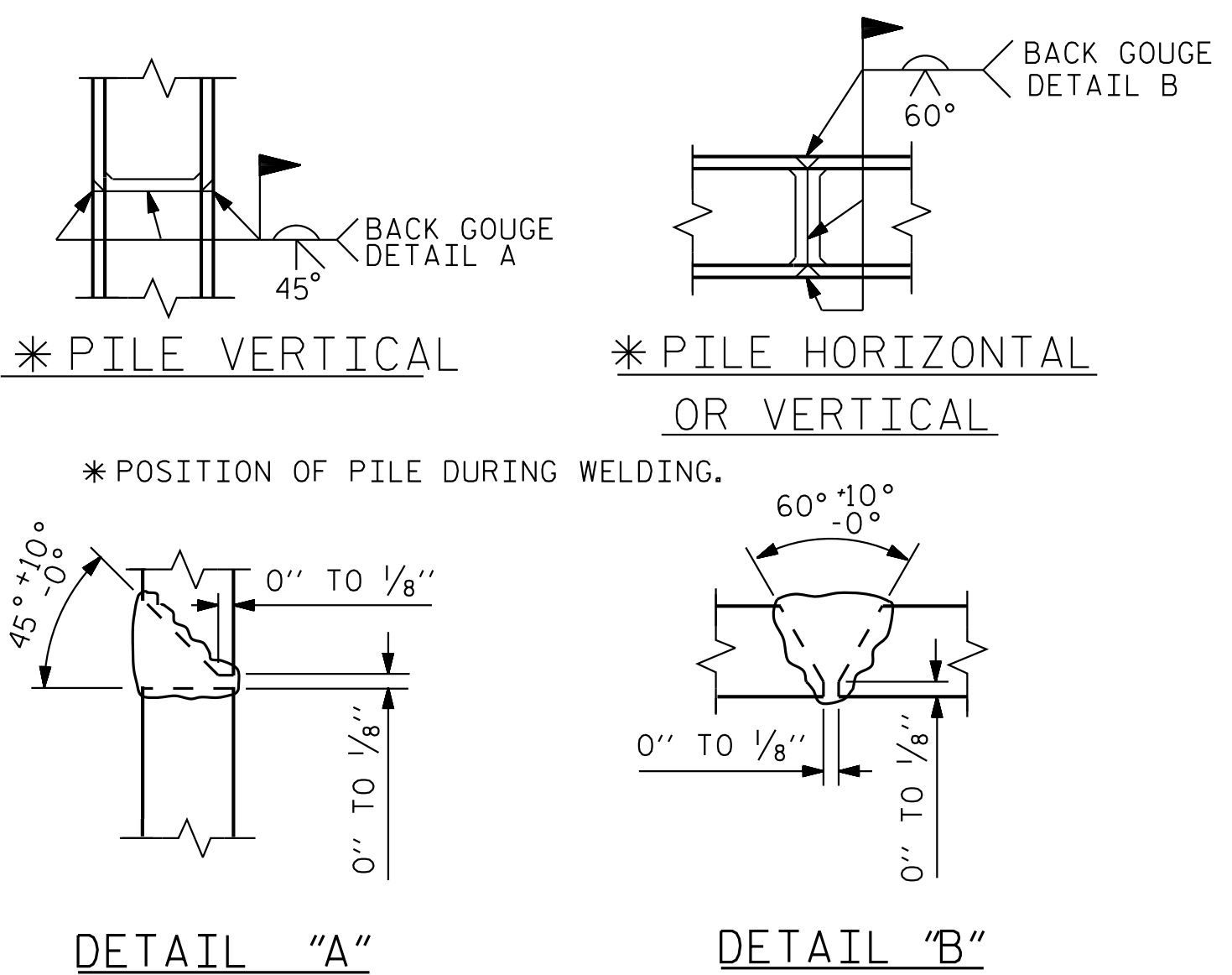
SECTION A-A



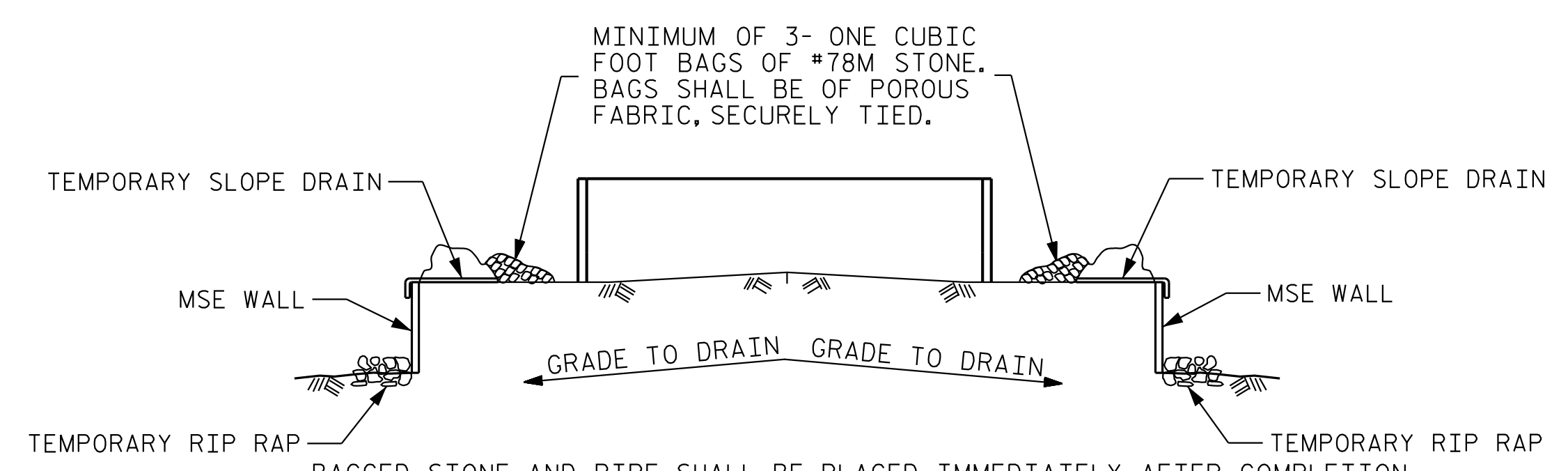
PARTIAL SECTION B-B

BAR TYPES					BILL OF MATERIAL						
					END BENT 1						
BAR	NO.	SIZE	TYPE	LENGTH	WEIGHT	BAR	NO.	SIZE	TYPE	LENGTH	WEIGHT
B1	8	9	1	46'-6"	1,265	H1	10	4	STR	4'-9"	32
B2	8	9	1	47'-9"	1,299	H2	4	4	STR	2'-8"	7
B3	12	5	STR	43'-8"	547	H3	4	4	STR	1'-11"	5
B4	12	4	STR	29'-9"	238	S1	82	5	2	11'-4"	969
B5	22	4	STR	3'-2"	47	S2	82	5	3	4'-1"	349
B6	8	4	STR	14'-6"	77	S3	44	4	5	7'-7"	223
B7	4	4	STR	20'-5"	55	U1	34	4	4	6'-2"	140
						V1	88	4	STR	6'-3"	367
						V2	8	6	STR	9'-11"	119
						V3	4	6	STR	9'-2"	55
					REINFORCING STEEL	5,794 LBS.					
					CLASS A CONCRETE	48.5 C.Y.					

ALL BAR DIMENSIONS ARE OUT TO OUT



HP PILE SPLICE DETAILS



BAGGED STONE AND PIPE SHALL BE PLACED IMMEDIATELY AFTER COMPLETION OF END BENT EXCAVATION. PIPE MAY BE EITHER CONCRETE, CORRUGATED STEEL, CORRUGATED ALUMINUM ALLOY, OR CORRUGATED PLASTIC. PERFORATED PIPE WILL NOT BE ALLOWED.

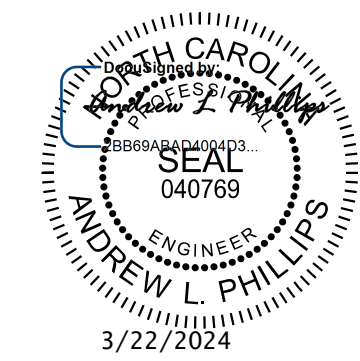
BAGGED STONE SHALL REMAIN IN PLACE UNTIL THE ENGINEER DIRECTS THAT IT BE REMOVED. THE CONTRACTOR SHALL REMOVE AND DISPOSE OF SILT ACCUMULATIONS AT BAGGED STONE WHEN SO DIRECTED BY THE ENGINEER. BAGS SHALL BE REMOVED AND REPLACED WHENEVER THE ENGINEER DETERMINES THAT THEY HAVE DETERIORATED AND LOST THEIR EFFECTIVENESS.

NO SEPARATE PAYMENT WILL BE MADE FOR THIS WORK AND THE ENTIRE COST OF THIS WORK SHALL BE INCLUDED IN THE UNIT CONTRACT PRICE BID FOR THE SEVERAL PAY ITEMS.

TEMPORARY DRAINAGE AT END BENT

PROJECT NO. P-5720  
WAKE COUNTY  
 STATION: 32+23.01 -L-

SHEET 3 OF 3



STATE OF NORTH CAROLINA  
 DEPARTMENT OF TRANSPORTATION  
 RALEIGH  
 SUBSTRUCTURE  
 END BENT 2  
 SECTION AND DETAILS

**Kimley»Horn**  
 421 Fayetteville Street, Suite 600  
 Raleigh, NC 27601-1772  
 Phone (919) 677-2000  
 NC LICENSE # F-0102

**DOCUMENT NOT CONSIDERED FINAL  
 UNLESS ALL SIGNATURES COMPLETED**

REVISIONS					SHEET NO.
NO.	BY:	DATE:	NO.	BY:	DATE:
1			3		
2			4		

TOTAL SHEETS: 33

3/22/2024 K:\RD1-Structures\Bridges\NC\101036002 - P-5720\Cad\Drawings\5720\_SML.E6\_911494.dgn

DRAWN BY: J. I. KIMBLE DATE: 1/19  
 CHECKED BY: M. D. MAGEE DATE: 1/19  
 DESIGN ENGINEER OF RECORD: S. A. DENNEY DATE: 1/19