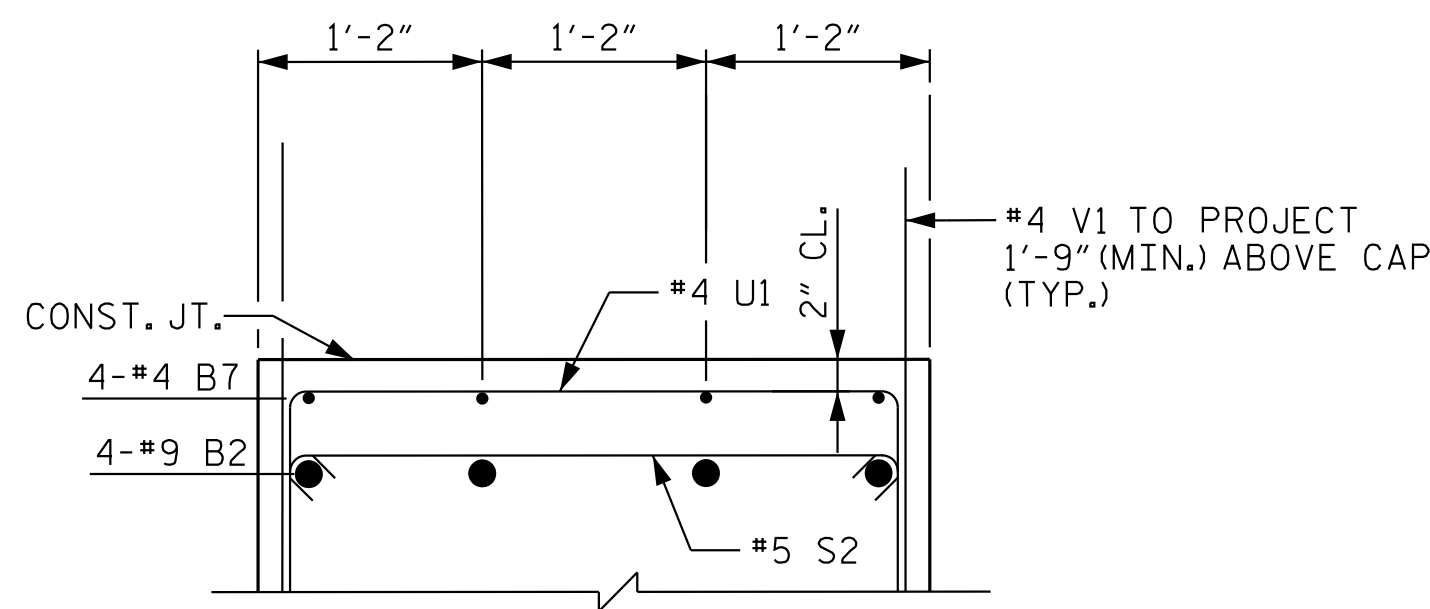


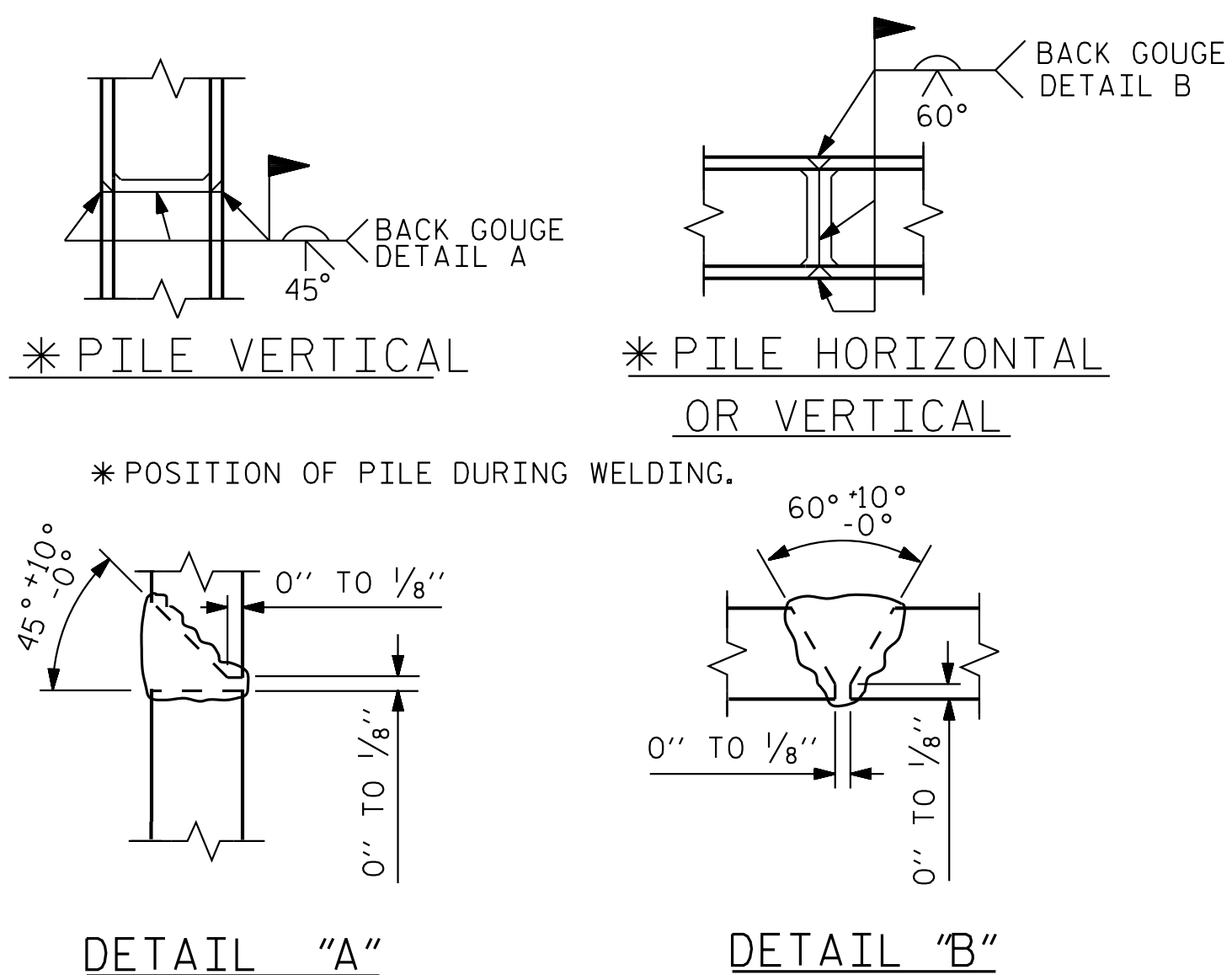
SECTION A-A



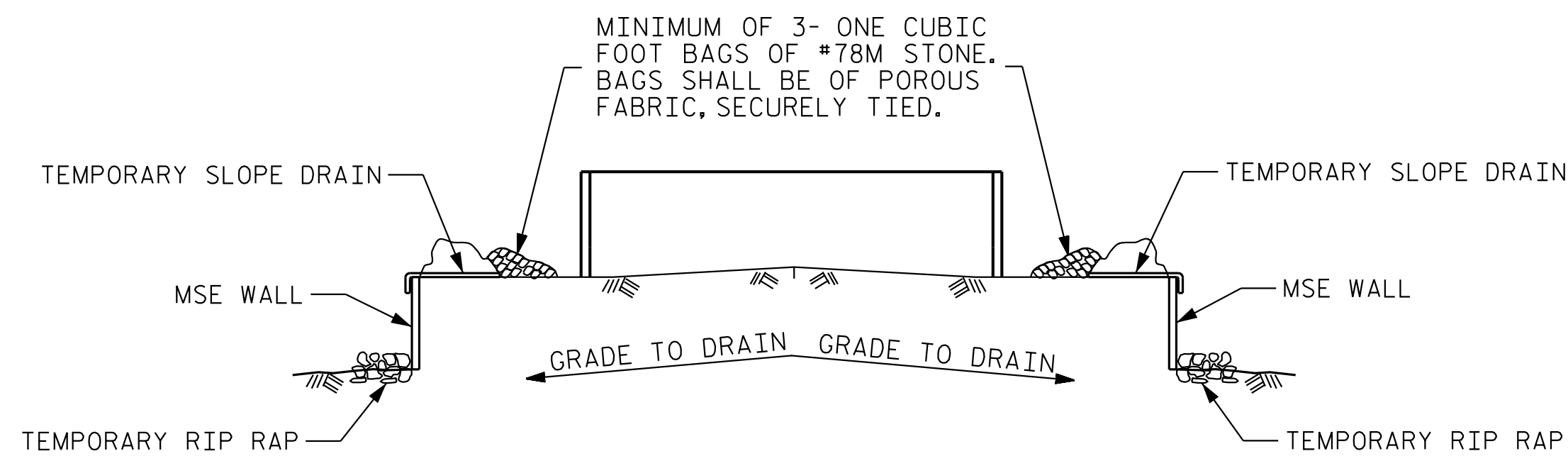
PARTIAL SECTION B-B

BAR TYPES					BILL OF MATERIAL	
					END BENT 1	
BAR	NO.	SIZE	TYPE	LENGTH	WEIGHT	
B1	8	9	1	46'-6"	1,265	
B2	8	9	1	47'-9"	1,299	
B3	12	5	STR	43'-8"	547	
B4	12	4	STR	29'-9"	238	
B5	22	4	STR	3'-2"	47	
B6	8	4	STR	14'-6"	77	
B7	4	4	STR	20'-5"	55	
H1	10	4	STR	4'-9"	32	
H2	4	4	STR	2'-8"	7	
H3	4	4	STR	1'-11"	5	
S1	82	5	2	11'-4"	969	
S2	82	5	3	4'-1"	349	
S3	44	4	5	7'-7"	223	
U1	34	4	4	6'-2"	140	
V1	88	4	STR	6'-3"	367	
V2	8	6	STR	9'-11"	119	
V3	4	6	STR	9'-2"	55	
REINFORCING STEEL					5,794 LBS.	
CLASS A CONCRETE					48.5 C.Y.	

ALL BAR DIMENSIONS ARE OUT TO OUT



HP PILE SPLICE DETAILS



BAGGED STONE AND PIPE SHALL BE PLACED IMMEDIATELY AFTER COMPLETION OF END BENT EXCAVATION. PIPE MAY BE EITHER CONCRETE, CORRUGATED STEEL, CORRUGATED ALUMINUM ALLOY, OR CORRUGATED PLASTIC. PERFORATED PIPE WILL NOT BE ALLOWED.

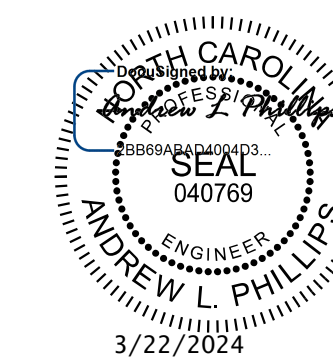
BAGGED STONE SHALL REMAIN IN PLACE UNTIL THE ENGINEER DIRECTS THAT IT BE REMOVED. THE CONTRACTOR SHALL REMOVE AND DISPOSE OF SILT ACCUMULATIONS AT BAGGED STONE WHEN SO DIRECTED BY THE ENGINEER. BAGS SHALL BE REMOVED AND REPLACED WHENEVER THE ENGINEER DETERMINES THAT THEY HAVE DETERIORATED AND LOST THEIR EFFECTIVENESS.

NO SEPARATE PAYMENT WILL BE MADE FOR THIS WORK AND THE ENTIRE COST OF THIS WORK SHALL BE INCLUDED IN THE UNIT CONTRACT PRICE BID FOR THE SEVERAL PAY ITEMS.

TEMPORARY DRAINAGE AT END BENT

PROJECT NO. P-5720
WAKE COUNTY
 STATION: 32+23.01 -L-

SHEET 3 OF 3



Kimley»Horn

421 Fayetteville Street, Suite 600
 Raleigh, NC 27601-1772
 Phone (919) 677-2000 NC LICENSE # F-0102

STATE OF NORTH CAROLINA
 DEPARTMENT OF TRANSPORTATION
 RALEIGH
 SUBSTRUCTURE
 END BENT 1
 SECTION AND DETAILS

7/22/2024
 DRAWN BY: J. I. KIMBLE DATE: 1/19
 CHECKED BY: M. D. MAGEE DATE: 1/19
 DESIGN ENGINEER OF RECORD: S. A. DENNEY DATE: 1/19

**DOCUMENT NOT CONSIDERED FINAL
 UNLESS ALL SIGNATURES COMPLETED**

This document, together with the concepts and designs presented herein, as an instrument of service, is intended only for the specific purpose and client for which it was prepared. Reuse of and Employer reliance of this document without written authorization and approval by Kimley-Horn and Associates, Inc. shall be without liability to Kimley-Horn and Associates, Inc.
 Copyright Kimley-Horn and Associates, Inc., 2024

REVISIONS				SHEET NO.
NO.	BY:	DATE:	NO.	DATE:
1			3	
2			4	

TOTAL SHEETS: 33