

PROJECT REFERENCE NO.	SHEET NO.
P-5720	EC-5/CONST.5
ROADWAY DESIGN ENGINEER	HYDRAULICS ENGINEER

-L-	-Y2REV-	-Y2-
PI Sta 22+40.96 Δ = 15° 47' 19.4" (RT) D = 2' 17' 30.6" L = 688.91' T = 346.65' R = 2,500.00' SE = 0.03	PI Sta 11+40.00 Δ = 90° 00' 00.0" (RT) D = 53' 03' 05.9" L = 169.65' T = 108.00' R = 108.00' SE = 0.04	PI Sta 11+47.00 Δ = 90° 00' 00.0" (RT) D = 49' 49' 20.7" L = 180.64' T = 115.00' R = 115.00'

-Y3-	-Y3-
PI Sta 12+21.27 Δ = 16° 38' 57.7" (LT) D = 14' 19' 26.2" L = 116.23' T = 58.53' R = 400.00' SE = RC	PI Sta 13+31.52 Δ = 14° 58' 04.0" (RT) D = 14' 19' 26.2" L = 104.49' T = 52.55' R = 400.00' SE = RC

LIFEPOINTE CHRISTIAN CHURCH INC.
DB 14386 - PG 2347
BM 2013 - PG 104
BM 2000 - PG 2013

OUTLET PROTECTION
CLASS B RIP RAP
EST 2 TONS
EST 5 SY GFD

Temporary Rock Silt Check Type A
2.0ft. weir height

STANDARD 4' BASE DITCH
SEE DETAIL 14SHEET 2D-1
EST 35 SY PSRM
DDE = 90 CY
SLOPE = 2.13%

Temporary Rock Silt Check Type A
1.75ft. weir height

Temporary Rock Silt Check Type A
3.25ft. weir height

Temporary Rock Silt Check Type A
2.0ft. weir height

Temporary Rock Silt Check Type A
2.0ft. weir height

Temporary Rock Silt Check Type A
2.0ft. weir height

Temporary Rock Silt Check Type A
2.0ft. weir height

Temporary Rock Silt Check Type A
2.5ft. weir height

Temporary Rock Silt Check Type A
1.0ft. weir height

NOTE: PLACE TEMPORARY ROCK SEDIMENT DAMS TYPE - B AND TEMPORARY ROCK SILT CHECKS TYPE - A AT DRAINAGE OUTLETS.

101 THOMAS DUDLEY & WIFE SARAH L. DB 16568 - PG 2601 BM 1992 - PG 1035 BM 2000 - PG 2013	107 LOUISE G. OVERTON DB 13231 - PG 1414 BM 1999 - PG 524	113 NADER A. WAKIM DB 8288 - PG 1946 BM 1999 - PG 524
102 DURANT TRAILS DB 6231 - PG 124 BM 1999 - PG 524	108 SARAH M. FLEMING DB 8317 - PG 2440 BM 1999 - PG 524	114 JOHN BOWERS DB 16023 - PG 1414 BM 1999 - PG 524
103 DAVID W. MILLER DB 16374 - PG 1096 BM 1999 - PG 524	109 CAITLYN R. DEBONA DB 16047 - PG 163 BM 1999 - PG 524	115 BRENDA G. AUSTIN DB 14144 - PG 1452 BM 1999 - PG 524
104 DANIELLE R. TRICARIO DB 16635 - PG 789 BM 1999 - PG 524	110 HENRY ZIMMERMAN & WIFE PATRICIA DB 12583 - PG 2639 BM 1999 - PG 524	116 MAX DRUMMOND DB 15083 - PG 333 BM 1999 - PG 524
105 GARY S. FLOHR DB 8477 - PG 110 BM 1999 - PG 524	111 BONNIE B. WALKER DB 12706 - PG 2602 BM 1999 - PG 524	117 JAMES B. KRITZER DB 13158 - PG 227 BM 1999 - PG 524
106 GLORIA H. TARKENTON & REBEKAH E. DB 8477 - PG 110 BM 1999 - PG 524	112 LORI A. DUPAW DB 15000 - PG 210 BM 1999 - PG 524	118 STACY L. KESSLER DB 12026 - PG 775 BM 1999 - PG 524

BEGIN CONSTRUCTION
-Y3- POT Sta. 10+90.00

UTILIZE FABRIC INSERT INLET PROTECTIONS IN LIEU OF ROCK INLET SEDIMENT TRAP TYPE C WHERE WATER MAY POND ON THE ROADWAY IN AREAS WHERE LIVE TRAFFIC IS PRESENT.

END CONSTRUCTION
-Y2REV- POT Sta. 16+84.57

CLEARING AND GRUBBING
EROSION CONTROL FOR
CONSTRUCTION SHEET 5

SPECGX LLC
DB 16993 - PG 748
BM 2018 - PG 1086

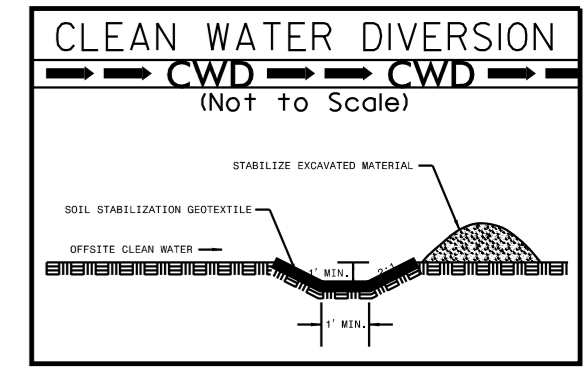
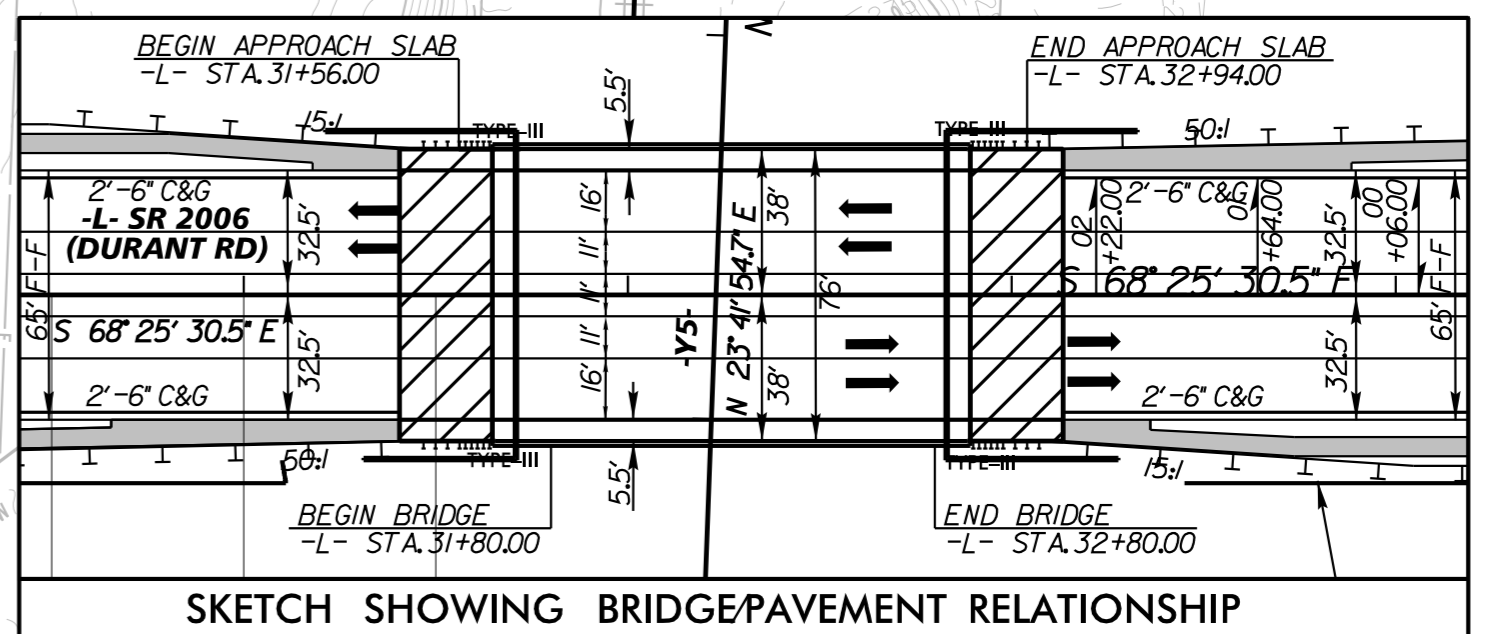
GRADE AREA UNDER
BRIDGE TO DRAIN
AND REMOVE GRAVEL
BERM AND ALLOW TO
DRAIN INTO NATURAL SWALE

PAVEMENT REMOVAL WITHIN
RAILROAD RIGHT OF WAY BY
OTHER MOVE

LATERAL 'V' DITCH
W/CLASS B RIPRAP
SEE DETAIL 2SHEET 2D-1
EST 85 TONS
EST 185 SY GFD

STANDARD 2' BASE DITCH
SEE DETAIL 6SHEET 2D-1

BYNUM PROPERTIES LLC
DB 15998 - PG 1633
BM 1985 - PG 1097



SEE SHEET NO. 7 FOR -L- PROFILE
SEE SHEET NO. 9 FOR -Y2- PROFILE
SEE SHEET NO. 9 FOR -Y3- PROFILE

REVISIONS

5/14/1999

12/22/2023

MATCHLINE -L- STA. 35+00.00
SEE PLAN SHEET EC-6