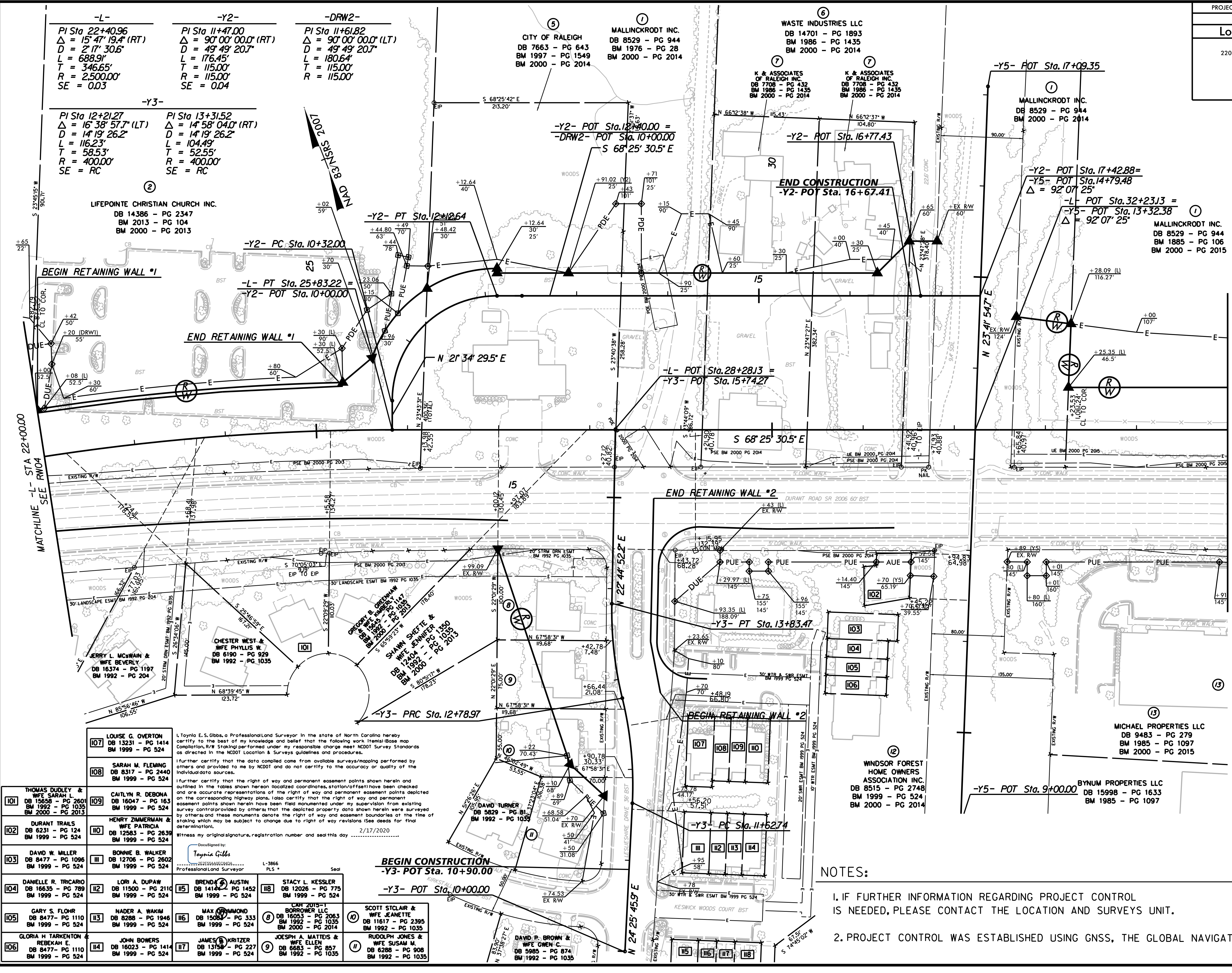


DOCUMENT NOT CONSIDERED
FINAL UNLESS ALL
SIGNATURES COMPLETED



-L-
PI Sta 22+40.96
Δ = 15' 47" 19.4" (RT)
D = 2' 17" 30.6"
L = 688.91'
T = 346.65'
R = 2,500.00'
SE = 0.03

-Y2-
PI Sta 11+47.00
Δ = 90' 00" 00.0" (RT)
D = 49' 49" 20.7"
L = 176.45'
T = 115.00'
R = 115.00'
SE = 0.04

-DRW2-
PI Sta 11+61.82
Δ = 90' 00" 00.0" (LT)
D = 49' 49" 20.7"
L = 180.64'
T = 115.00'
R = 115.00'

-Y3-
PI Sta 12+21.27
Δ = 16' 38" 57.7" (LT)
D = 14' 19" 26.2"
L = 116.23'
T = 58.53'
R = 400.00'
SE = RC

PI Sta 13+31.52
Δ = 14' 58" 04.0" (RT)
D = 14' 19" 26.2"
L = 104.49'
T = 52.55'
R = 400.00'
SE = RC

LIFEPOINTE CHRISTIAN CHURCH INC.
DB 14386 - PG 2347
BM 2013 - PG 104
BM 2000 - PG 2013

BEGIN RETAINING WALL #1

END RETAINING WALL #1

-Y2- PC Sta. 10+32.00

-L- PT Sta. 25+83.22 =
-Y2- POT Sta. 10+00.00

-Y2- PT Sta. 12+12.64

-Y2- POT Sta. 12+40.00 =
-DRW2- POT Sta. 10+00.00

-L- POT Sta. 28+28.13 =
-Y3- POT Sta. 15+74.27

MATCHLINE -L- STA 22+00.00
SEE RW04

JERRY L. McSWAIN &
WIFE BEVERLY
DB 16374 - PG 1197
BM 1992 - PG 204

CHESTER WEST &
WIFE PHYLLIS W.
DB 6100 - PG 929
BM 1992 - PG 1035

SHAWN SKEFFE &
WIFE JENNIFER
DB 17404 - PG 1350
BM 2000 - PG 2013

LOUISE G. OVERTON
DB 13231 - PG 1414
BM 1999 - PG 524

SARAH M. FLEMING
DB 8317 - PG 2440
BM 1999 - PG 524

THOMAS DUDLEY &
WIFE SARAH L.
DB 15658 - PG 2601
BM 1992 - PG 1035
BM 2000 - PG 2013

DURANT TRAILS
DB 6231 - PG 124
BM 1999 - PG 524

DAVID W. MILLER
DB 8477 - PG 1096
BM 1999 - PG 524

DANIELLE R. TRICARIO
DB 16635 - PG 789
BM 1999 - PG 524

GARY S. FLOHR
DB 8477 - PG 1110
BM 1999 - PG 524

GLORIA H. TARKENTON &
REBEKAH E.
DB 8477 - PG 1110
BM 1999 - PG 524

CAITLYN R. DEBONA
DB 16047 - PG 163
BM 1999 - PG 524

HENRY ZIMMERMAN &
WIFE PATRICIA
DB 12583 - PG 2639
BM 1999 - PG 524

BONNIE B. WALKER
DB 12706 - PG 2602
BM 1999 - PG 524

LORI A. DUPAW
DB 11500 - PG 2110
BM 1999 - PG 524

NADER A. WAKIM
DB 8288 - PG 1946
BM 1999 - PG 524

BRENDA A. AUSTIN
DB 14144 - PG 1452
BM 1999 - PG 524

MAX BRONNMOND
DB 15083 - PG 333
BM 1999 - PG 524

JOHN BOWERS
DB 16023 - PG 1414
BM 1999 - PG 524

DAVID TURNER
DB 5829 - PG 81
BM 1992 - PG 1035

SCOTT STCLAIR &
WIFE JEANETTE
DB 11617 - PG 2395
BM 1992 - PG 1035

RUDOLPH JONES &
WIFE SUSAN M.
DB 6288 - PG 908
BM 1992 - PG 1035

DAVID P. BROWN &
WIFE GWEN C.
DB 5985 - PG 874
BM 1992 - PG 1035

CITY OF RALEIGH
DB 7663 - PG 643
BM 1997 - PG 1549
BM 2000 - PG 2014

MALLINCKRODT INC.
DB 8529 - PG 944
BM 1986 - PG 28
BM 2000 - PG 2014

WASTE INDUSTRIES LLC
DB 14701 - PG 1893
BM 1986 - PG 1435
BM 2000 - PG 2014

K & ASSOCIATES
OF RALEIGH INC.
DB 7708 - PG 432
BM 1986 - PG 1435
BM 2000 - PG 2014

END CONSTRUCTION
-Y2- POT Sta. 16+67.41

-Y2- POT Sta. 16+77.43

-Y2- POT Sta. 17+42.88 =
-Y5- POT Sta. 14+79.48
Δ = 92' 07" 25"

END RETAINING WALL #2

-Y3- PT Sta. 13+83.47

-Y3- PC Sta. 11+62.74

BEGIN RETAINING WALL #2

WINDSOR FOREST HOME OWNERS ASSOCIATION INC.
DB 8515 - PG 2748
BM 1999 - PG 524
BM 2000 - PG 2014

BYNUM PROPERTIES LLC
DB 15998 - PG 1633
BM 1985 - PG 1097

DAVID P. BROWN &
WIFE GWEN C.
DB 5985 - PG 874
BM 1992 - PG 1035

DAVID P. BROWN &
WIFE GWEN C.
DB 5985 - PG 874
BM 1992 - PG 1035

DAVID P. BROWN &
WIFE GWEN C.
DB 5985 - PG 874
BM 1992 - PG 1035

MALLINCKRODT INC.
DB 8529 - PG 944
BM 2000 - PG 2014

-Y5- POT Sta. 17+09.35

-Y5- POT Sta. 17+42.88 =
-Y5- POT Sta. 14+79.48
Δ = 92' 07" 25"

-L- POT Sta. 32+23.13 =
-Y5- POT Sta. 13+32.38
Δ = 92' 07" 25"

MALLINCKRODT INC.
DB 8529 - PG 944
BM 1885 - PG 106
BM 2000 - PG 2015

MATCHLINE -L- STA 35+00.00
SEE RW06

MICHAEL PROPERTIES LLC
DB 9483 - PG 279
BM 1985 - PG 1097
BM 2000 - PG 2015

-Y5- POT Sta. 9+00.00

BYNUM PROPERTIES LLC
DB 15998 - PG 1633
BM 1985 - PG 1097

BYNUM PROPERTIES LLC
DB 15998 - PG 1633
BM 1985 - PG 1097

BYNUM PROPERTIES LLC
DB 15998 - PG 1633
BM 1985 - PG 1097

REVISIONS

101	THOMAS DUDLEY & WIFE SARAH L. DB 15658 - PG 2601 BM 1992 - PG 1035 BM 2000 - PG 2013	109	CAITLYN R. DEBONA DB 16047 - PG 163 BM 1999 - PG 524
102	DURANT TRAILS DB 6231 - PG 124 BM 1999 - PG 524	110	HENRY ZIMMERMAN & WIFE PATRICIA DB 12583 - PG 2639 BM 1999 - PG 524
103	DAVID W. MILLER DB 8477 - PG 1096 BM 1999 - PG 524	111	BONNIE B. WALKER DB 12706 - PG 2602 BM 1999 - PG 524
104	DANIELLE R. TRICARIO DB 16635 - PG 789 BM 1999 - PG 524	112	LORI A. DUPAW DB 11500 - PG 2110 BM 1999 - PG 524
105	GARY S. FLOHR DB 8477 - PG 1110 BM 1999 - PG 524	113	NADER A. WAKIM DB 8288 - PG 1946 BM 1999 - PG 524
106	GLORIA H. TARKENTON & REBEKAH E. DB 8477 - PG 1110 BM 1999 - PG 524	114	JOHN BOWERS DB 16023 - PG 1414 BM 1999 - PG 524
107	LOUISE G. OVERTON DB 13231 - PG 1414 BM 1999 - PG 524	115	BRENDA A. AUSTIN DB 14144 - PG 1452 BM 1999 - PG 524
108	SARAH M. FLEMING DB 8317 - PG 2440 BM 1999 - PG 524	116	STACY L. KESSLER DB 12026 - PG 775 BM 1999 - PG 524
109	THOMAS DUDLEY & WIFE SARAH L. DB 15658 - PG 2601 BM 1992 - PG 1035 BM 2000 - PG 2013	117	MAX BRONNMOND DB 15083 - PG 333 BM 1999 - PG 524
110	DURANT TRAILS DB 6231 - PG 124 BM 1999 - PG 524	118	CAR 2015-1 BORROWER LLC DB 16063 - PG 2063 BM 1992 - PG 1035 BM 2000 - PG 2014
111	DAVID W. MILLER DB 8477 - PG 1096 BM 1999 - PG 524	119	SCOTT STCLAIR & WIFE JEANETTE DB 11617 - PG 2395 BM 1992 - PG 1035
112	DANIELLE R. TRICARIO DB 16635 - PG 789 BM 1999 - PG 524	120	RUDOLPH JONES & WIFE SUSAN M. DB 6288 - PG 908 BM 1992 - PG 1035
113	GARY S. FLOHR DB 8477 - PG 1110 BM 1999 - PG 524	121	DAVID P. BROWN & WIFE GWEN C. DB 5985 - PG 874 BM 1992 - PG 1035
114	GLORIA H. TARKENTON & REBEKAH E. DB 8477 - PG 1110 BM 1999 - PG 524	122	DAVID P. BROWN & WIFE GWEN C. DB 5985 - PG 874 BM 1992 - PG 1035

I, Tanya E. S. Gibbs, a Professional Land Surveyor in the state of North Carolina hereby certify to the best of my knowledge and belief that the following work (Final Base Map Compilation, R/W Staking) performed under my responsible charge meet NCDOT Survey Standards as directed in the NCDOT Location & Surveys guidelines and procedures.

I further certify that the data compiled came from available surveys/measurements performed by others and provided to me by NCDOT and do not certify to the accuracy or quality of the individual data sources.

I further certify that the right of way and permanent easement points shown herein and outlined in the tables shown hereon (located coordinates, station/offset) have been checked and are accurate representations of the right of way and permanent easement points depicted on the corresponding highway plans. I also certify that the right of way and permanent easement points shown herein have been field monumented under my supervision from existing survey control provided by others; that the depicted property data shown herein were surveyed by others and these monuments denote the right of way and easement boundaries at the time of staking which may be subject to change due to right of way revisions (see deeds for final determination).

Witness my original signature, registration number and seal this day 2/17/2020

Tanya Gibbs
Professional Land Surveyor L-3866 PLS

BEGIN CONSTRUCTION
-Y3- POT Sta. 10+90.00

-Y3- POT Sta. 10+00.00

NOTES:

- IF FURTHER INFORMATION REGARDING PROJECT CONTROL IS NEEDED, PLEASE CONTACT THE LOCATION AND SURVEYS UNIT.
- PROJECT CONTROL WAS ESTABLISHED USING GNSS, THE GLOBAL NAVIGATION SATELLITE SYSTEM.