

5/14/1999

-L- PI Sta 22+40.96 Δ = 15° 47' 19.4" (RT) D = 2' 17' 30.6" L = 688.91' T = 346.65' R = 2,500.00' SE = 0.03	-Y2REV- PI Sta 11+40.00 Δ = 90° 00' 00.0" (RT) D = 53' 03" 05.9" L = 169.65' T = 108.00' R = 108.00' SE = 0.04	-Y2- PI Sta 11+47.00 Δ = 90° 00' 00.0" (RT) D = 49' 49" 20.7" L = 180.64' T = 115.00' R = 115.00'
---	--	--

-Y3- PI Sta 12+21.27 Δ = 16° 38' 57.7" (LT) D = 14' 19" 26.2" L = 116.23' T = 58.53' R = 400.00' SE = RC	-Y2- PI Sta 13+31.52 Δ = 14° 58' 04.0" (RT) D = 14' 19" 26.2" L = 104.49' T = 52.55' R = 400.00' SE = RC
--	--

LIFEPOINTE CHRISTIAN CHURCH INC.
DB 14386 - PG 2347
BM 2013 - PG 104
BM 2000 - PG 2013

OUTLET PROTECTION
CLASS 8 RIP RAP
EST 2 TONS
EST 5 SY GFD

BEGIN RETAINING WALL #1
BEGIN FENCE (SEE NOTE 1)
-Y2REV- POT Sta. 10+00.00

END RETAINING WALL #1
END FENCE (SEE NOTE 1)
-Y2- POT Sta. 10+00.00

OUTLET PROTECTION
CLASS 1 RIP RAP
EST 15 TONS
EST 30 SY GFD

RETAIN 36" RCP-IV

RETAIN 18" RCP-IV

REMOVE SYSTEM

REMOVE SYSTEM

REMOVE SYSTEM

REMOVE SYSTEM

REMOVE SYSTEM

REMOVE SYSTEM

REMOVE SYSTEM

REMOVE SYSTEM

REMOVE SYSTEM

REMOVE SYSTEM

REMOVE SYSTEM

REMOVE SYSTEM

ALL RIGHT OF WAY & EASEMENT STATION OFFSETS ARE DEFINED OFF OF -Y2-

STANDARD 4' BASE DITCH
W/CLASS 1 RIP RAP
SEE DETAIL 10SHEET 2D-1
EST 50 TONS
DDE=70 CY
NORTH CAROLINA
DEPARTMENT OF TRANSPORTATION
DB 17349 - 2390

STANDARD 4' BASE DITCH
W/CLASS 1 RIP RAP
EST 35 SY PSRM
DDE= 90 CY
SLOPE=2.13%

OUTLET PROTECTION
CLASS 1 RIP RAP
EST 15 TONS
EST 30 SY GFD

RETAIN 36" RCP-IV

RETAIN 18" RCP-IV

REMOVE SYSTEM

REMOVE SYSTEM

REMOVE SYSTEM

REMOVE SYSTEM

REMOVE SYSTEM

REMOVE SYSTEM

REMOVE SYSTEM

REMOVE SYSTEM

REMOVE SYSTEM

REMOVE SYSTEM

REMOVE SYSTEM

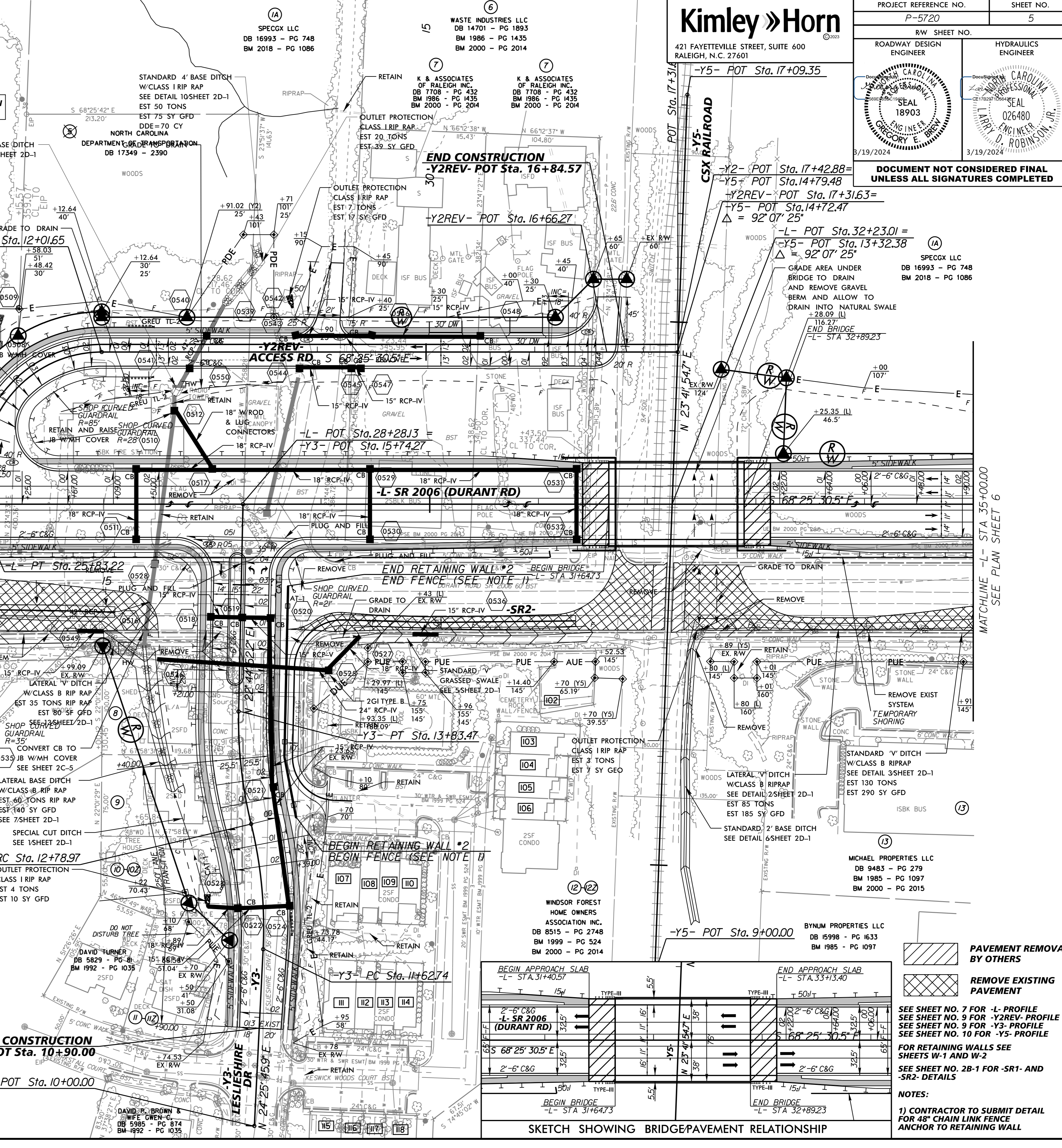
REMOVE SYSTEM

REMOVE SYSTEM

REMOVE SYSTEM

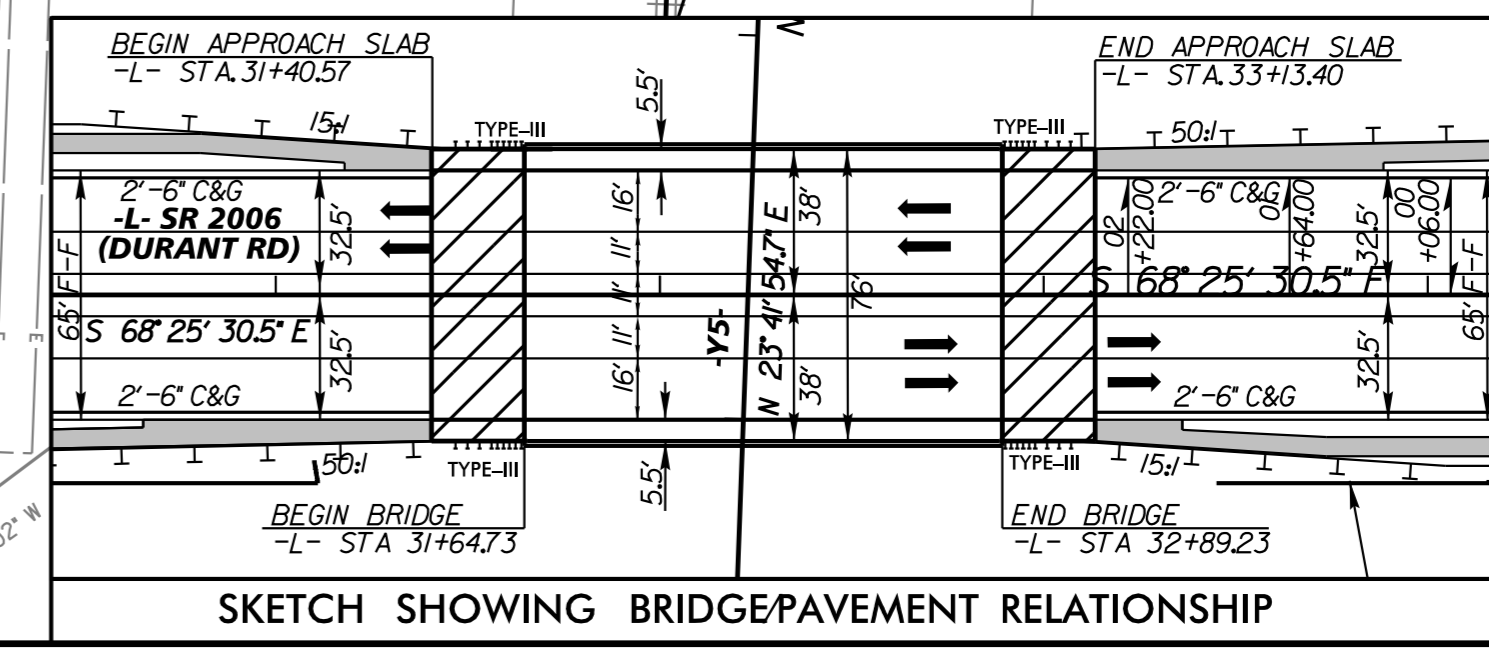
REMOVE SYSTEM

REMOVE SYSTEM



CAH 206-1 BORROWER LLC DB 16053 - PG 2063 BM 1992 - PG 1035 BM 2000 - PG 2014	JOSEPH A. MATTEIS & WIFE ELLEN DB 6683 - PG 857 BM 1992 - PG 1035	SCOTT STCLAIR & WIFE JEANETTE DB 1617 - PG 2395 BM 1992 - PG 1035	RUDOLPH JONES & WIFE SUSAM M. DB 6288 - PG 908 BM 1992 - PG 1035	THOMAS DUDLEY & WIFE SARAH L. DB 16374 - PG 197 BM 1992 - PG 204	LOUISE G. OVERTON DB 13231 - PG 1414 BM 1999 - PG 524	NADER A. WAKIM DB 8288 - PG 1946 BM 1999 - PG 524
DURANT TRAILS DB 6231 - PG 124 BM 1999 - PG 524	DAVID W. MILLER DB 8477 - PG 1096 BM 1999 - PG 524	DANIELLE R. TRICARIO DB 16635 - PG 789 BM 1999 - PG 524	GARY S. FLOHR DB 8477 - PG 110 BM 1999 - PG 524	GLORIA H. TARKENTON & REBEKAH E. DB 8477 - PG 110 BM 1999 - PG 524	SARAH M. FLEMING DB 16047 - PG 163 BM 1999 - PG 524	JOHN BOWERS DB 16023 - PG 144 BM 1999 - PG 524
DAVID W. MILLER DB 8477 - PG 1096 BM 1999 - PG 524	DANIELLE R. TRICARIO DB 16635 - PG 789 BM 1999 - PG 524	GARY S. FLOHR DB 8477 - PG 110 BM 1999 - PG 524	GLORIA H. TARKENTON & REBEKAH E. DB 8477 - PG 110 BM 1999 - PG 524	LORI A. DUPAW DB 1500 - PG 210 BM 1999 - PG 524	CAITLYN R. DEBONA DB 16047 - PG 163 BM 1999 - PG 524	BRENDA G. AUSTIN DB 14144 - PG 1452 BM 1999 - PG 524
DAVID W. MILLER DB 8477 - PG 1096 BM 1999 - PG 524	DANIELLE R. TRICARIO DB 16635 - PG 789 BM 1999 - PG 524	GARY S. FLOHR DB 8477 - PG 110 BM 1999 - PG 524	GLORIA H. TARKENTON & REBEKAH E. DB 8477 - PG 110 BM 1999 - PG 524	LORI A. DUPAW DB 1500 - PG 210 BM 1999 - PG 524	CAITLYN R. DEBONA DB 16047 - PG 163 BM 1999 - PG 524	BRENDA G. AUSTIN DB 14144 - PG 1452 BM 1999 - PG 524
DAVID W. MILLER DB 8477 - PG 1096 BM 1999 - PG 524	DANIELLE R. TRICARIO DB 16635 - PG 789 BM 1999 - PG 524	GARY S. FLOHR DB 8477 - PG 110 BM 1999 - PG 524	GLORIA H. TARKENTON & REBEKAH E. DB 8477 - PG 110 BM 1999 - PG 524	LORI A. DUPAW DB 1500 - PG 210 BM 1999 - PG 524	CAITLYN R. DEBONA DB 16047 - PG 163 BM 1999 - PG 524	BRENDA G. AUSTIN DB 14144 - PG 1452 BM 1999 - PG 524

2019 ADT 2040 ADT	-Y3- LESUESHIRE DRIVE DHW = 14% DIR = 55% TSTT = 23% DUAL = 3%	108 20554 30660	-L- SR 2006 (DURANT RD) DHW = 8% DIR = 55% TSTT = 1% DUAL = 2%	1008 1100 30660	-L- SR 2006 (DURANT RD) DHW = 8% DIR = 55% TSTT = 1% DUAL = 2%
2019 ADT 2040 ADT	-Y3- LESUESHIRE DRIVE DHW = 12% DIR = 85% TSTT = 1% DUAL = 2%	1608 1700 30660	-L- SR 2006 (DURANT RD) DHW = 8% DIR = 55% TSTT = 1% DUAL = 2%	1008 1100 30660	-L- SR 2006 (DURANT RD) DHW = 8% DIR = 55% TSTT = 1% DUAL = 2%



PAVEMENT REMOVAL BY OTHERS

REMOVE EXISTING PAVEMENT

SEE SHEET NO. 7 FOR -L- PROFILE
SEE SHEET NO. 9 FOR -Y2REV- PROFILE
SEE SHEET NO. 9 FOR -Y3- PROFILE
SEE SHEET NO. 10 FOR -Y5- PROFILE

FOR RETAINING WALLS SEE SHEETS W-1 AND W-2

SEE SHEET NO. 28-1 FOR -SR1- AND -SR2- DETAILS

NOTES:
1) CONTRACTOR TO SUBMIT DETAIL FOR 48" CHAIN LINK FENCE ANCHOR TO RETAINING WALL

Kimley Horn
421 FAYETTEVILLE STREET, SUITE 600
RALEIGH, N.C. 27601

PROJECT REFERENCE NO. P-5720
SHEET NO. 5

Roadway Design Engineer
Hydraulics Engineer

Professional Engineer Seal
18903
Professional Engineer Seal
026480

DOCUMENT NOT CONSIDERED FINAL
UNLESS ALL SIGNATURES COMPLETED

SPECGX LLC
DB 16993 - PG 748
BM 2018 - PG 1086

GRADE AREA UNDER BRIDGE TO DRAIN AND REMOVE GRAVEL BERM AND ALLOW TO DRAIN INTO NATURAL SWALE +28.09 (LL)

END BRIDGE
-L- STA 32+89.23

END BRIDGE
-L- STA 32+89.23

END BRIDGE
-L- STA 32+89.23

END BRIDGE
-L- STA 32+89.23

END BRIDGE
-L- STA 32+89.23

END BRIDGE
-L- STA 32+89.23

END BRIDGE
-L- STA 32+89.23

END BRIDGE
-L- STA 32+89.23

END BRIDGE
-L- STA 32+89.23

END BRIDGE
-L- STA 32+89.23

END BRIDGE
-L- STA 32+89.23

END BRIDGE
-L- STA 32+89.23

END BRIDGE
-L- STA 32+89.23

END BRIDGE
-L- STA 32+89.23

END BRIDGE
-L- STA 32+89.23

END BRIDGE
-L- STA 32+89.23

END BRIDGE
-L- STA 32+89.23

3/11/2024