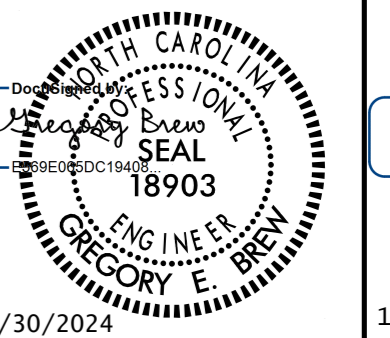
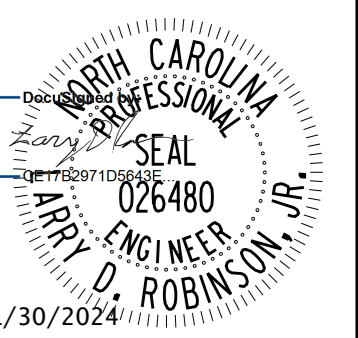


5/14/99

Kimley Horn

421 FAYETTEVILLE STREET, SUITE 600
RALEIGH, N.C. 27601

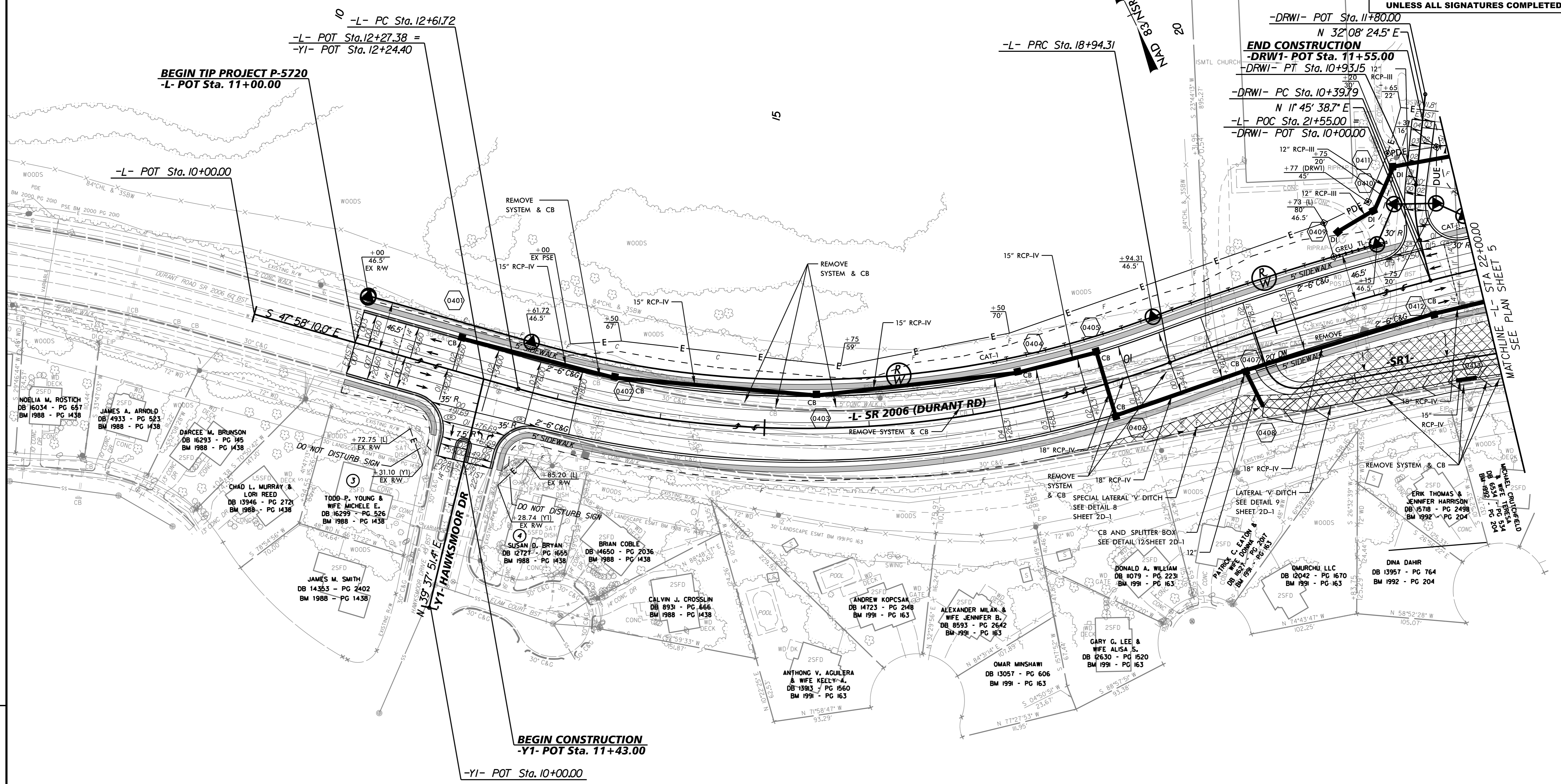
PROJECT REFERENCE NO. P-5720	SHEET NO. 4
R/W SHEET NO.	
ROADWAY DESIGN ENGINEER	HYDRAULICS ENGINEER
	
1/30/2024	1/30/2024

**DOCUMENT NOT CONSIDERED FINAL
UNLESS ALL SIGNATURES COMPLETED**

-L-	-DRWI-
PI Sta 15+89.00 Δ = 36' 14" 39.9" (LT) D = 5' 43" 46.5" L = 632.58' T = 327.28' R = 1,000.00' SE = 0.04	PI Sta 22+40.96 Δ = 15' 47" 19.4" (RT) D = 2' 17" 30.6" L = 688.91' T = 346.65' R = 2,500.00' SE = 0.03
	PI Sta 10+66.76 Δ = 20' 22" 45.8" (RT) D = 38' 11" 49.9" L = 53.35' T = 26.96' R = 150.00'

①
MALLINCKRODT INC.
DB 8529 - PG 944
BM 1976 - PG 28
BM 2000 - PG 2010
BM 2014 - PG 1348
TAX ID # 1728741824

②
LIFEPOINT CHRISTIAN CHURCH INC.
DB 14386 - PG 2347
BM 2013 - PG 204
BM 1982 - PG 677
BM 2000 - PG 202



BEGIN TIP PROJECT P-5720
-L- POT Sta. 11+00.00

BEGIN CONSTRUCTION
-YI- POT Sta. 11+43.00

END CONSTRUCTION
-DRWI- POT Sta. 11+55.00
-DRWI- PT Sta. 10+93.15

REVISIONS

12/21/2023

 REMOVE EXISTING PAVEMENT

SEE SHEET NO. 7 FOR -L- PROFILE
SEE SHEET NO. 8 FOR -YI- PROFILE
SEE SHEET NO. 10 FOR -DRWI- PROFILE
SEE SHEET NO. 2B-1 FOR -SR1- DETAIL