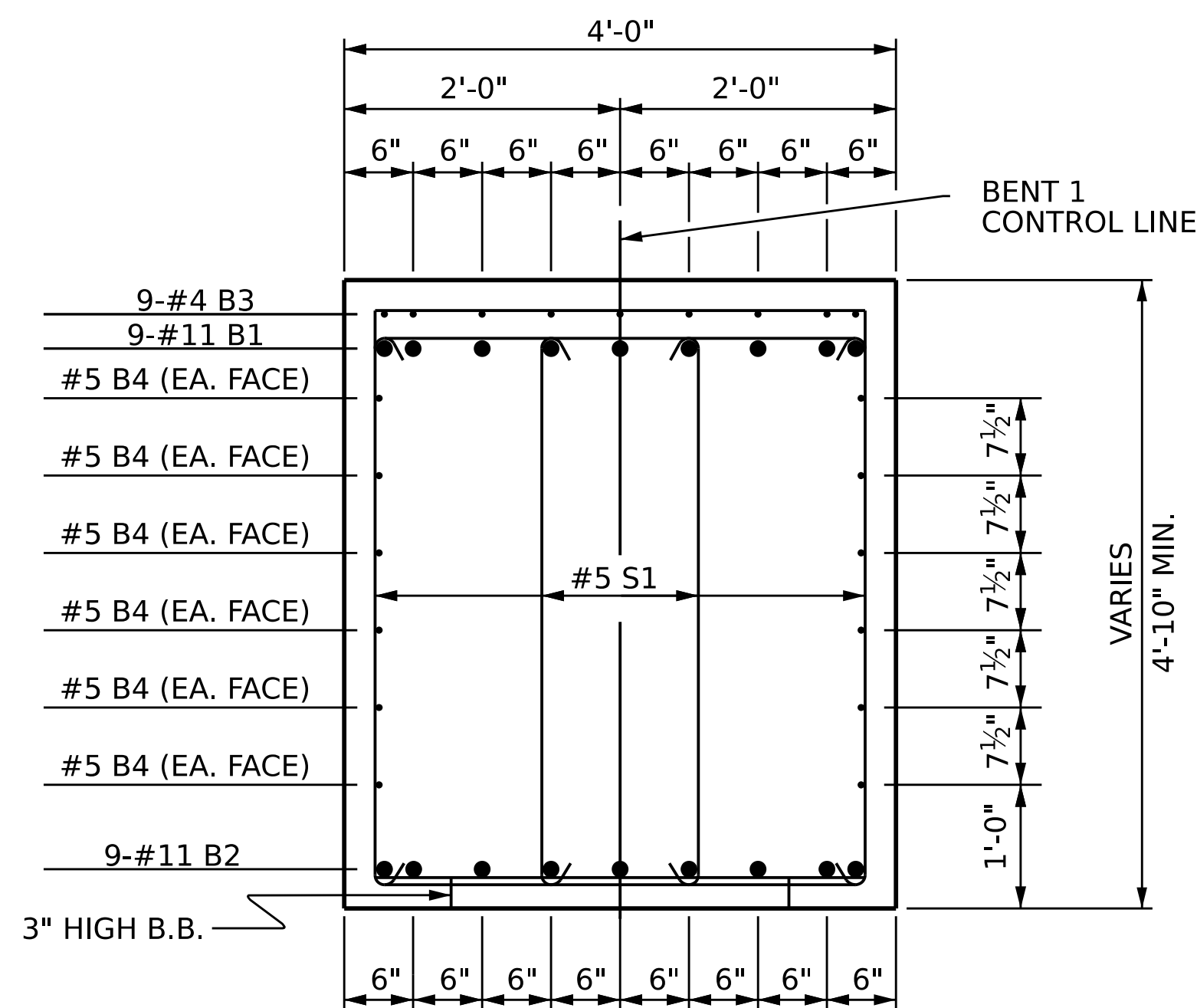
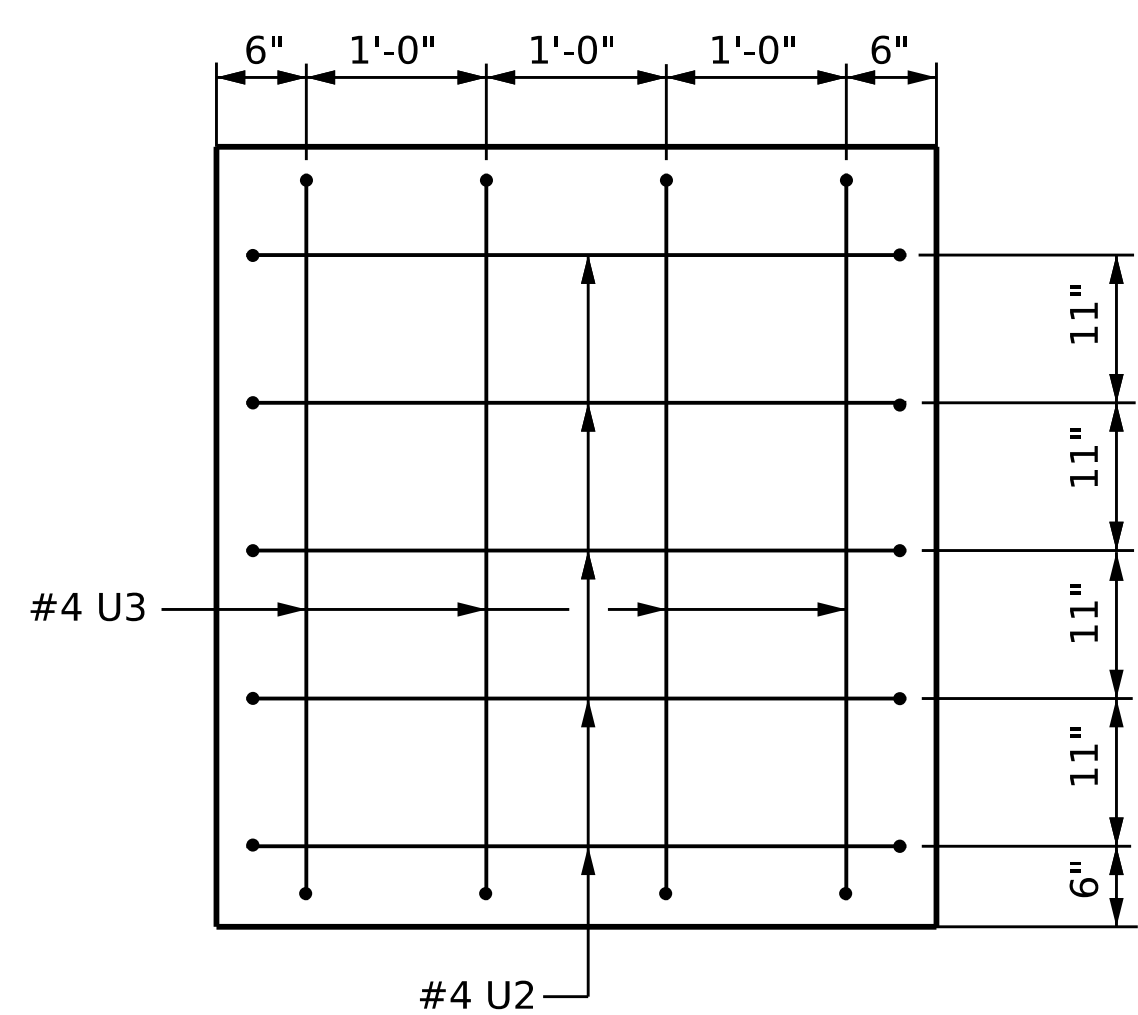


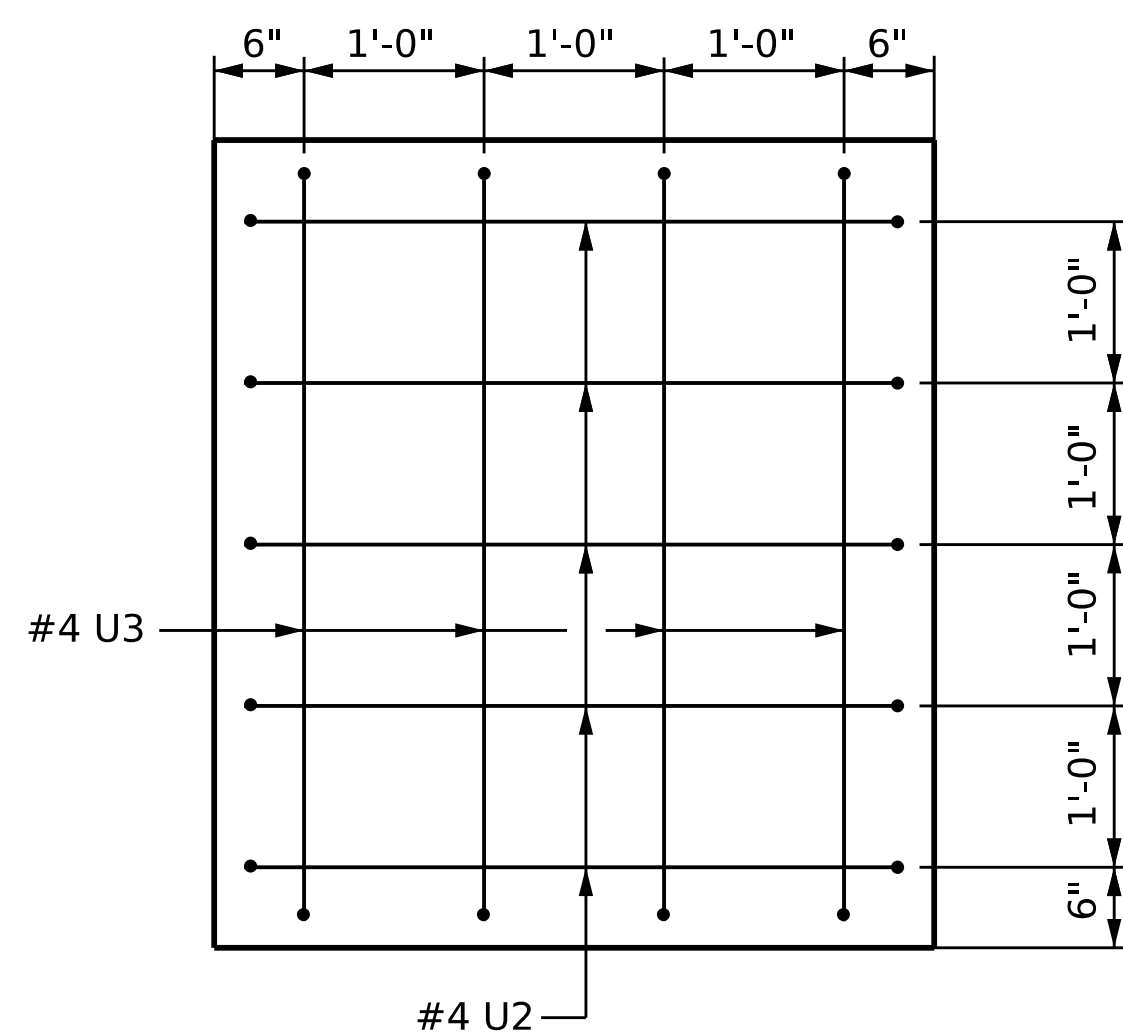
SECTION A-A



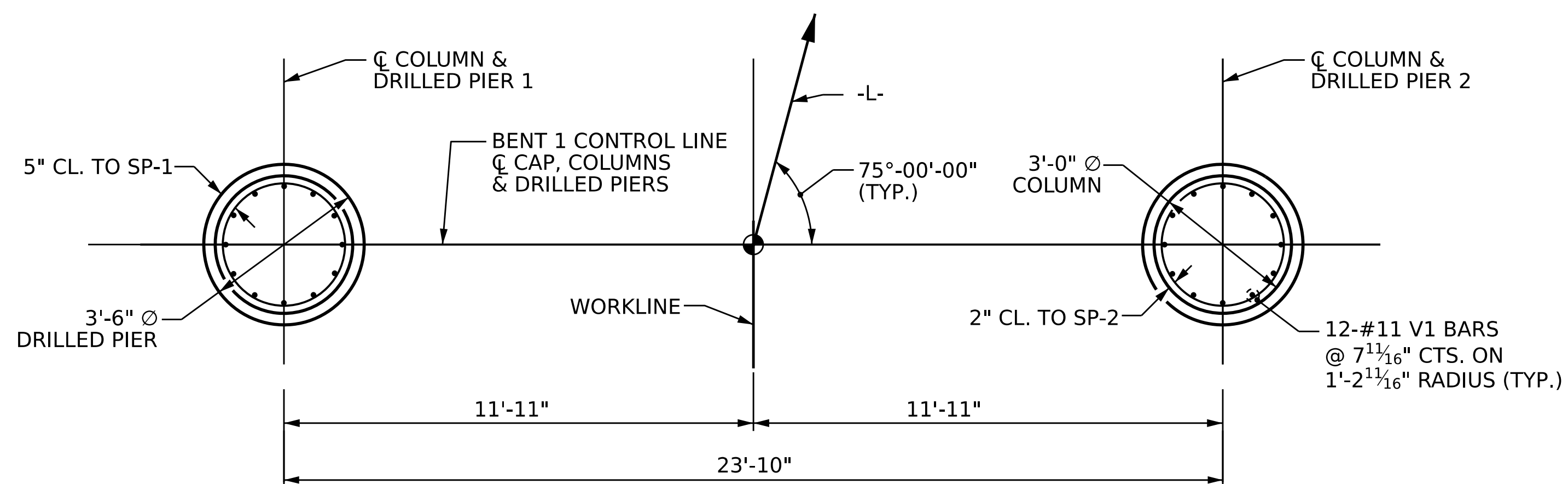
SECTION B-B



SECTION X-X

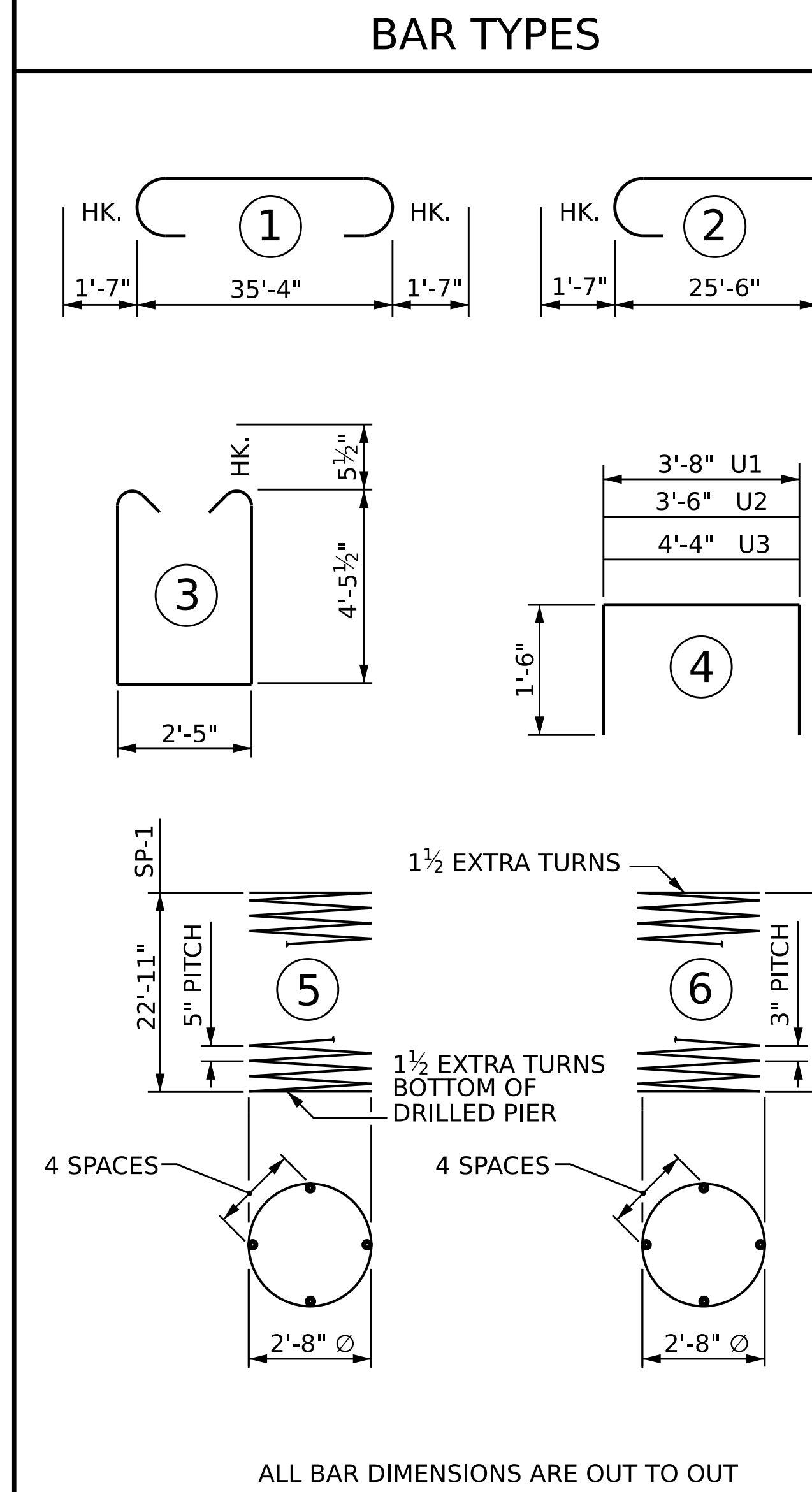


SECTION Y-Y



PLAN OF DRILLED PIERS AND COLUMNS

(REINFORCING STEEL AND DIMENSIONS ARE TYPICAL FOR EACH DRILLED PIER AND COLUMN)

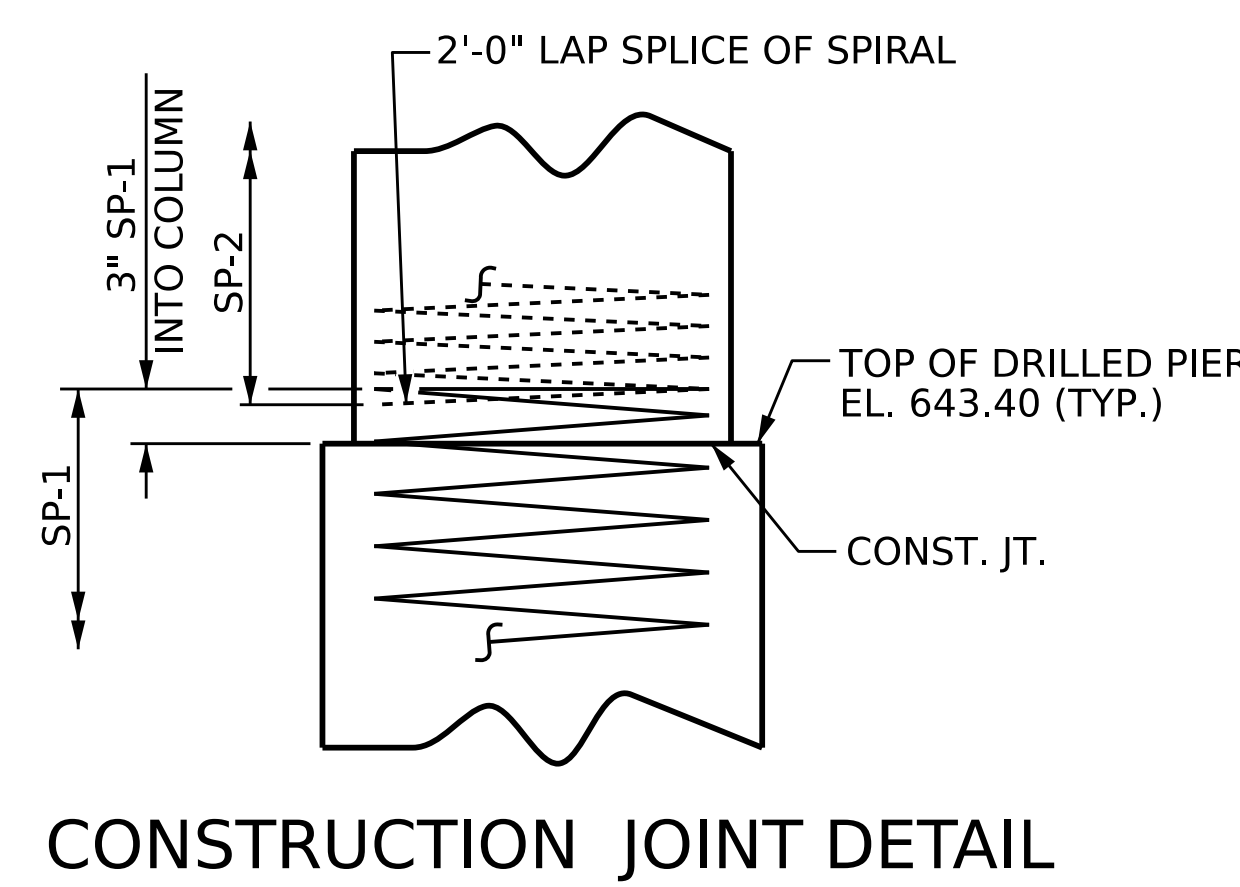


ALL BAR DIMENSIONS ARE OUT TO OUT

\* THE SP-1 SPIRAL REINFORCING STEEL SHALL BE W31 OR D-31 COLD DRAWN WIRE OR #5 PLAIN OR DEFORMED BAR.  
 \*\* THE SP-2 SPIRAL REINFORCING STEEL SHALL BE W20 OR D-20 COLD DRAWN WIRE OR #4 PLAIN OR DEFORMED BAR.

BILL OF MATERIAL

BENT 1					
BAR	NO.	SIZE	TYPE	LENGTH	WEIGHT
B1	9	#11	1	38'-6"	1841
B2	9	#11	STR	35'-6"	1698
B3	9	#4	STR	25'-4"	152
B4	6	#5	STR	35'-6"	222
M1	24	#11	STR	31'-2"	3974
S1	74	#5	3	12'-3"	945
U1	46	#4	4	6'-8"	205
U2	10	#4	4	6'-6"	43
U3	8	#4	4	7'-4"	39
V1	24	#11	2	27'-1"	3453
REINFORCING STEEL				LBS.	12,573
SP-1	2	*	5	464'-9"	969
SP-2	2	**	6	796'-3"	1064
SPIRAL COLUMN REINFORCING STEEL				LBS.	2,033
CLASS A CONCRETE					
POUR #2 - COLUMN				CU. YDS.	12.3
POUR #3 - CAP				CU. YDS.	26.8
TOTAL				CU. YDS.	39.1
DRILLED PIER CONCRETE					
POUR #1 - DRILLED PIERS				CU. YDS.	16.7



CONSTRUCTION JOINT DETAIL

PROJECT NO. BR-0093  
 ROCKINGHAM COUNTY  
 STATION: 18+75.52 -L-  
 SHEET 2 OF 2



STATE OF NORTH CAROLINA  
 DEPARTMENT OF TRANSPORTATION  
 RALEIGH  
 SUBSTRUCTURE  
 BENT 1

DRAWN BY: E. BAYISSA DATE: 12/2023  
 CHECKED BY: F. LEA DATE: 01/2024  
 DESIGN ENGINEER OF RECORD: E. BAYISSA DATE: 09/2023

REVISIONS					SHEET NO.
NO.	BY:	DATE:	NO.	DATE:	
1			3		TOTAL SHEETS
2			4		36

DOCUMENT NOT CONSIDERED FINAL UNLESS ALL SIGNATURES COMPLETED