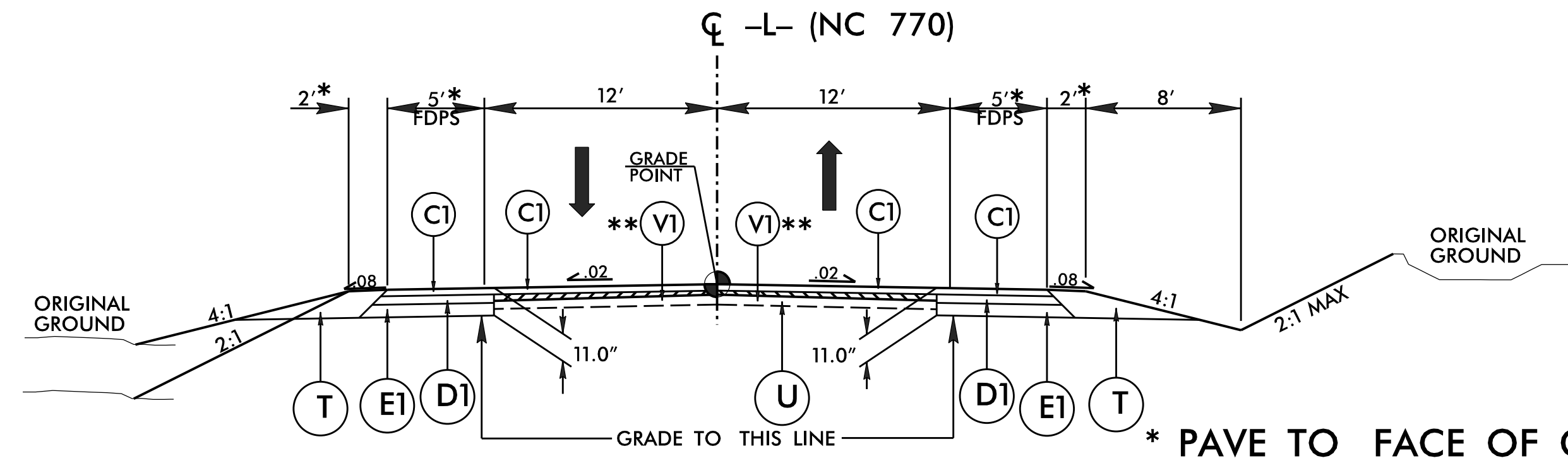
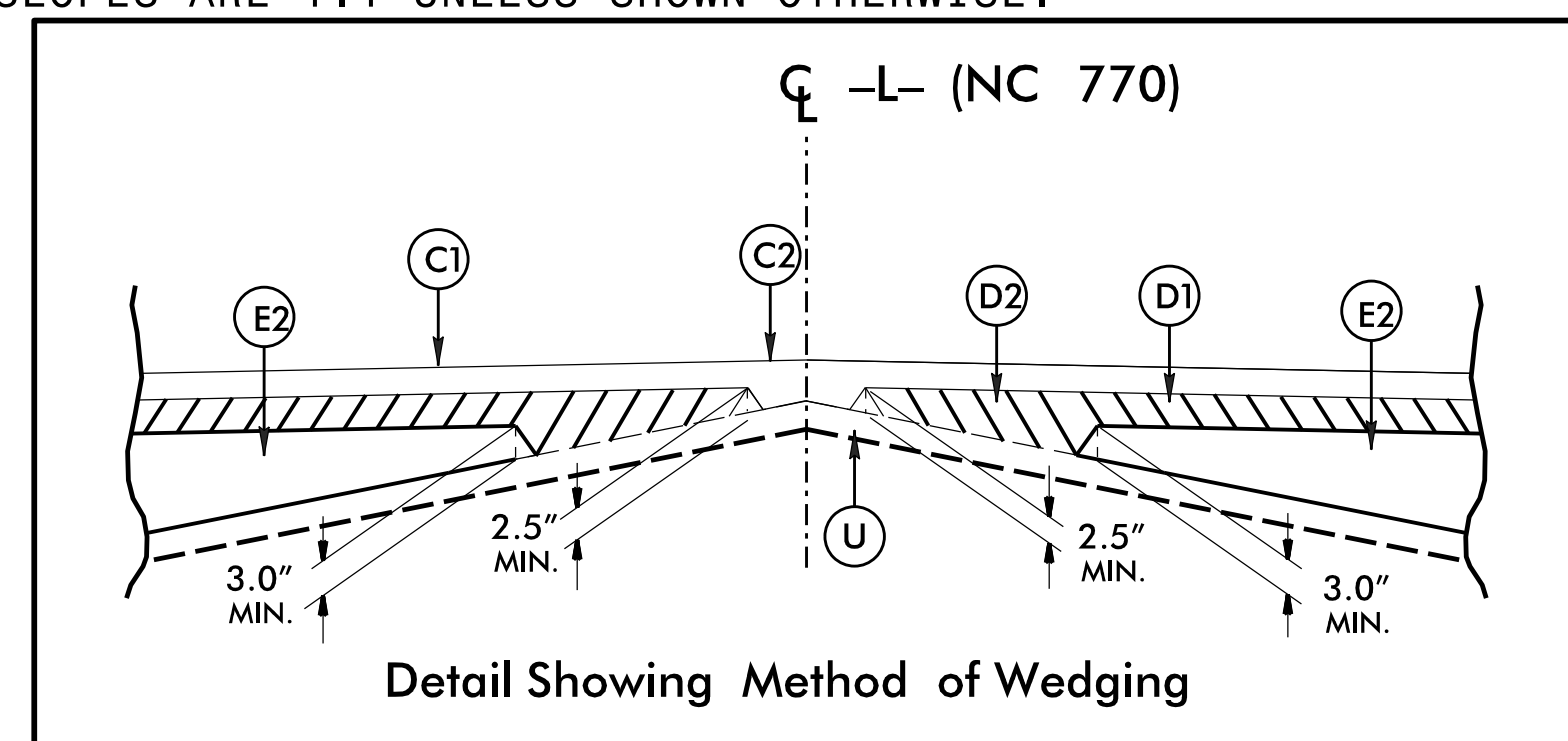


### FINAL PAVEMENT SCHEDULE

C1	PROP. APPROX. 3.0" ASPHALT CONCRETE SURFACE COURSE, TYPE S9.5B, AT AN AVERAGE RATE OF 165 LBS. PER SQ. YD. IN EACH OF TWO LAYERS.
C2	PROP. VAR. DEPTH ASPHALT CONCRETE SURFACE COURSE, TYPE S9.5B, AT AN AVERAGE RATE OF 110 LBS. PER SQ. YD. PER 1" DEPTH. TO BE PLACED IN LAYERS NOT TO EXCEED 1 1/2" IN DEPTH.
D1	PROP. APPROX. 4.0" ASPHALT CONCRETE SURFACE COURSE, TYPE I19.0C, AT AN AVERAGE RATE OF 456 LBS. PER SQ. YD.
D2	PROP. VAR. DEPTH ASPHALT CONCRETE BASE COURSE, TYPE I19.0C, AT AN AVERAGE RATE OF 114 LBS. PER SQ. YD. PER 1" DEPTH. TO BE PLACED IN LAYERS NOT LESS THAN 2 1/2" IN DEPTH OR GREATER THAN 4" IN DEPTH.
E1	PROP. APPROX. 4.0" ASPHALT CONCRETE BASE COURSE, TYPE B25.0C, AT AN AVERAGE RATE OF 456 LBS. PER SQ. YD.
E2	PROP. VAR. DEPTH ASPHALT CONCRETE BASE COURSE, TYPE B25.0C, AT AN AVERAGE RATE OF 114 LBS. PER SQ. YD. PER 1" DEPTH. TO BE PLACED IN LAYERS NOT LESS THAN 3" IN DEPTH OR GREATER THAN 5 1/2" IN DEPTH.
J	6" ABC.
R	SHOULDER BERM GUTTER.
T	EARTH MATERIAL.
U	EXISTING PAVEMENT.
V1	MILLING BITUMINOUS PAVEMENT (1.5' DEPTH).
V2	INCIDENTAL MILLING.
W	VARIABLE DEPTH ASPHALT PAVEMENT.

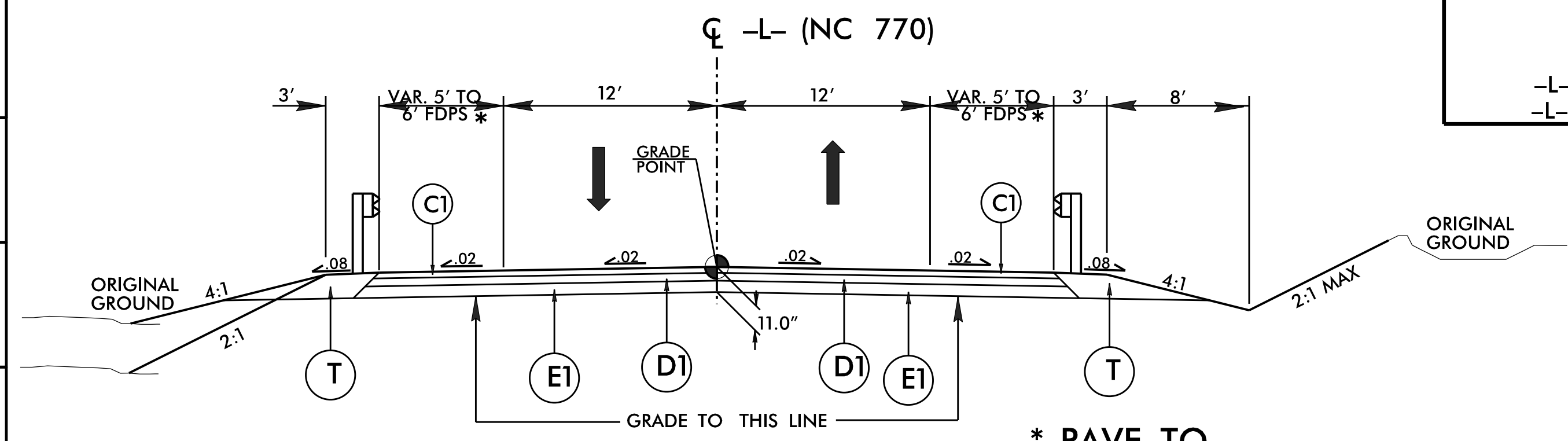
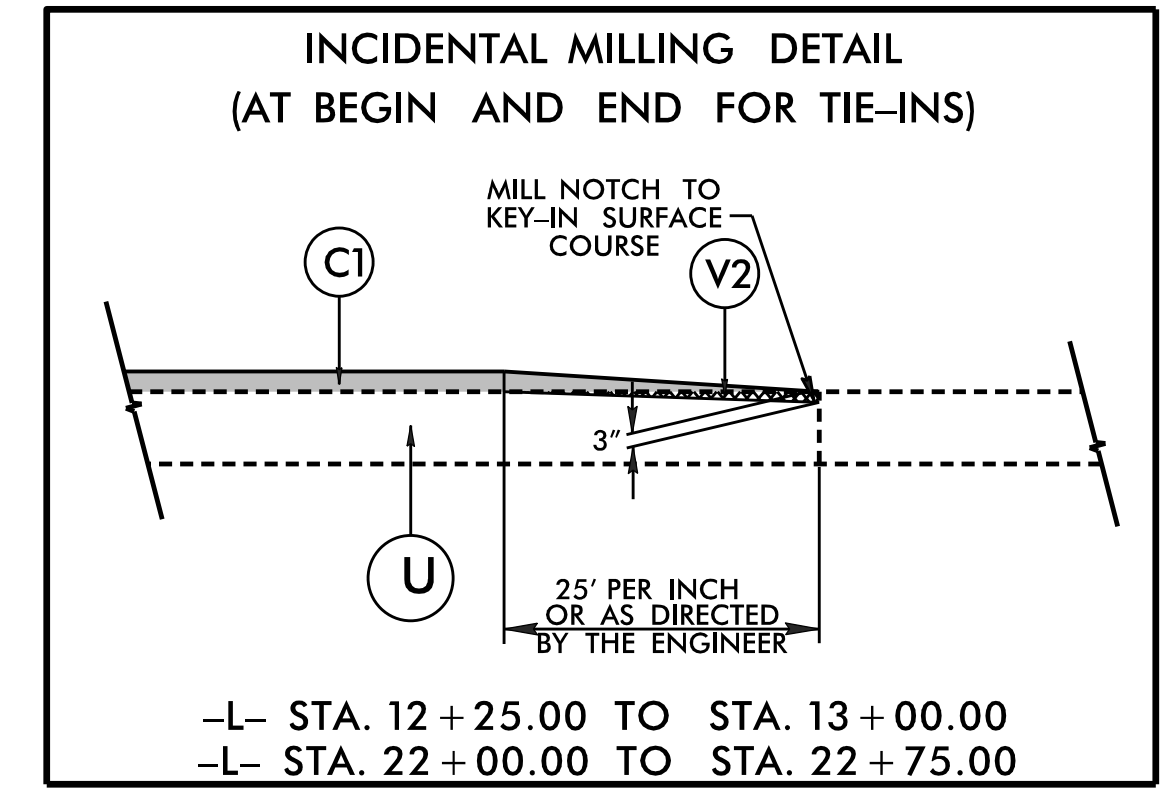
NOTE: PAVEMENT EDGE SLOPES ARE 1:1 UNLESS SHOWN OTHERWISE.



#### TYPICAL SECTION NO. 1

- L- STA. 13+00 TO 16+00
- \*\* -L- STA. 13+00 TO 15+25
- L- STA. 19+90 TO 22+00
- \*\* -L- STA. 21+50 TO 22+00

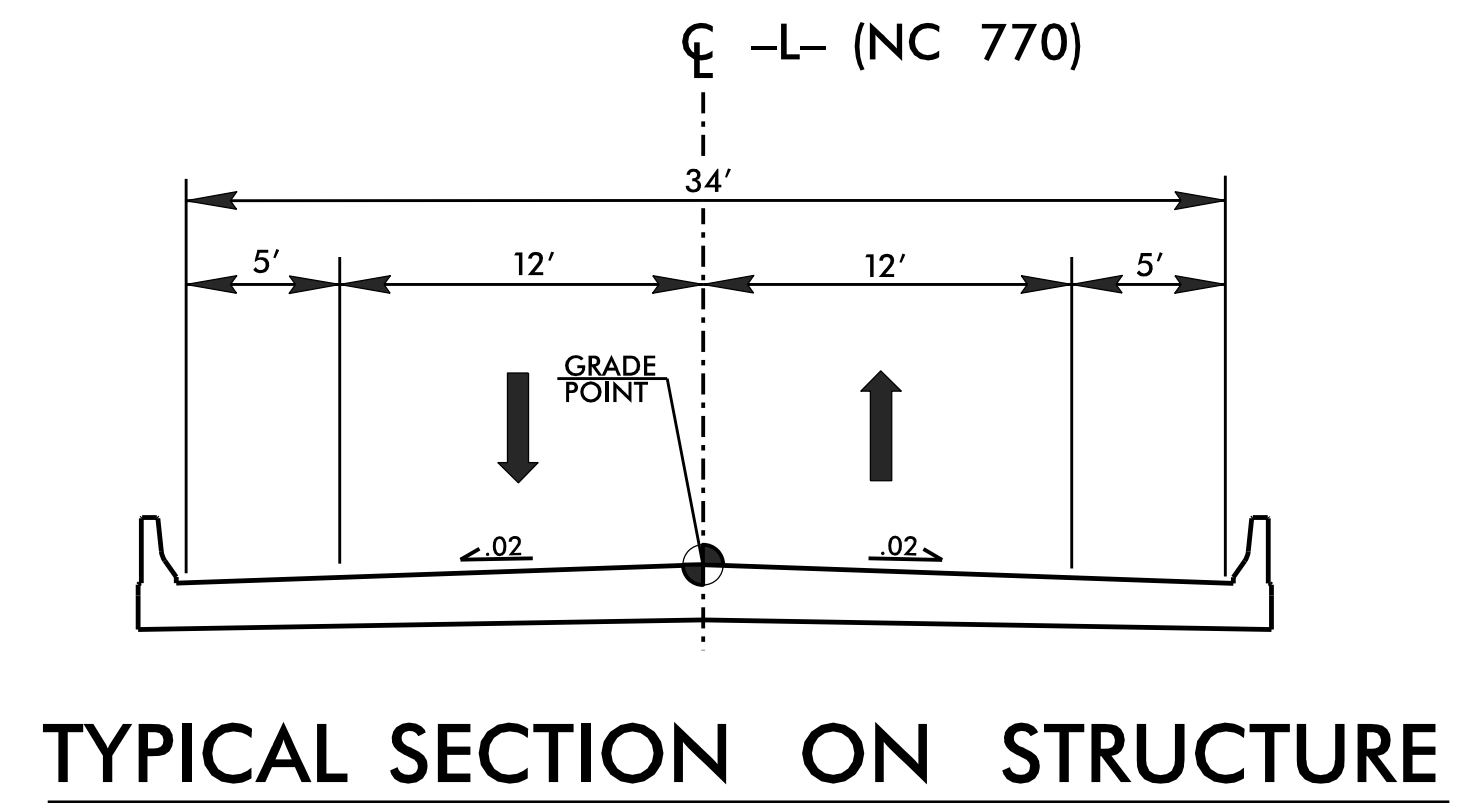
\* PAVE TO FACE OF GUARDRAIL  
\* 3' SHOULDER BEHIND GUARDRAIL



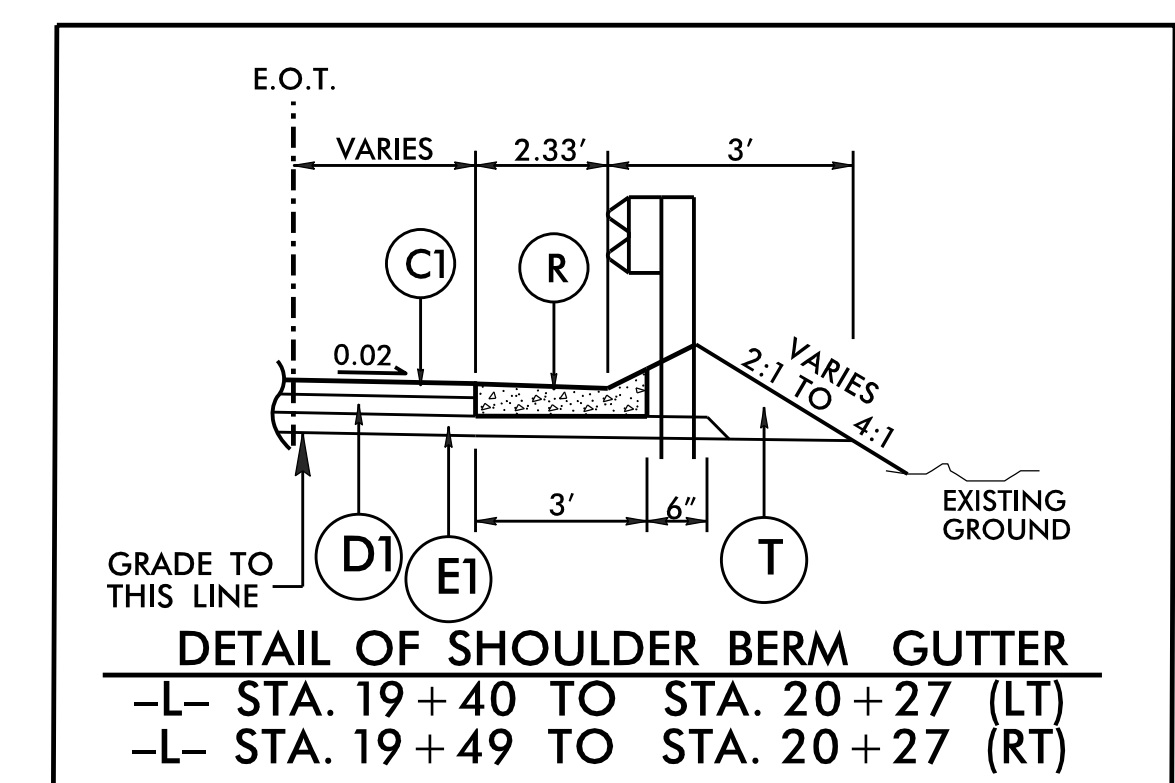
#### TYPICAL SECTION NO. 2

- L- STA. 16+00 TO 16+40.52 (BEGIN BRIDGE)
- L- STA. 19+30.52 (END BRIDGE) TO 19+90

\* PAVE TO FACE OF GUARDRAIL



#### TYPICAL SECTION ON STRUCTURE



BR-0093  
2A-1

NORTH CAROLINA  
DEPARTMENT OF TRANSPORTATION  
ROCKINGHAM COUNTY

ROADWAY DESIGN UNIT  
ROADWAY DESIGN ENGINEER

PROFESSIONAL SEAL  
042662  
C. NEWBERRY  
03/2024

PAVEMENT DESIGN ENGINEER

PROFESSIONAL SEAL  
044590  
ANDREW D. WATSON  
03/2024

DOCUMENT NOT CONSIDERED FINAL UNLESS ALL SIGNATURES COMPLETED

REVISIONS