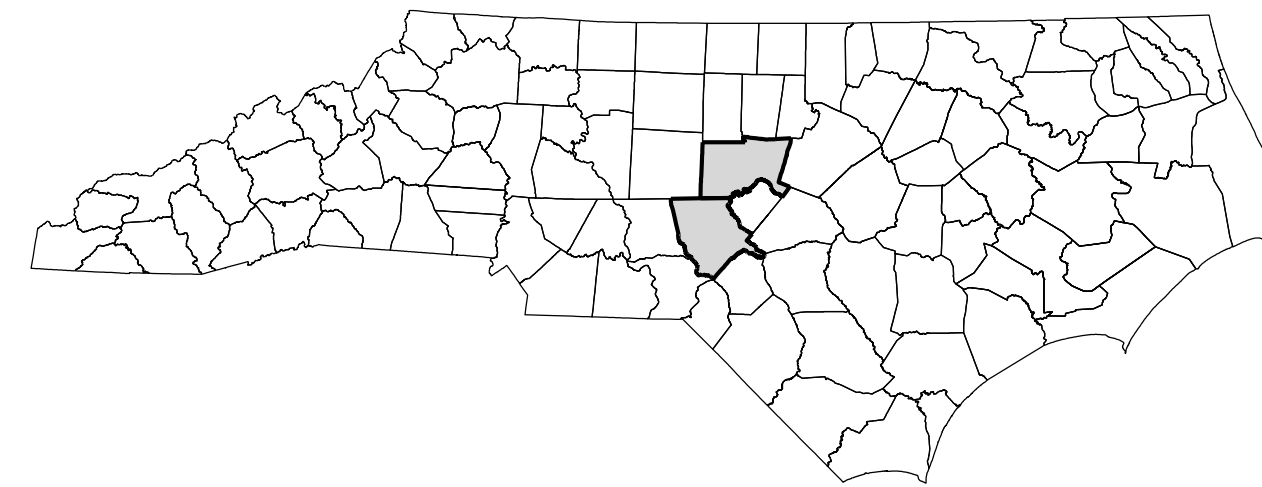


STATE OF NORTH CAROLINA  
DIVISION OF HIGHWAYS

**TRANSPORTATION MANAGEMENT PLAN**

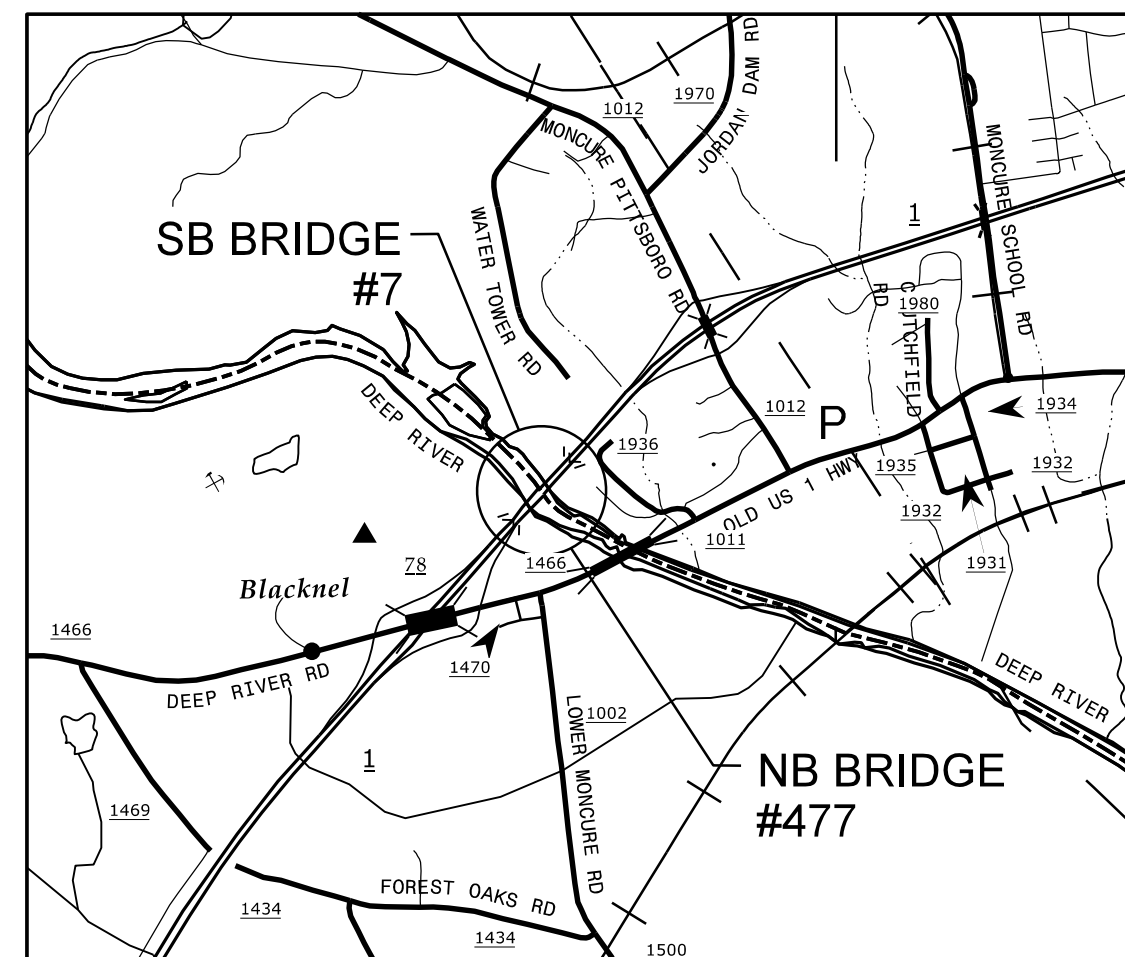
**MOORE & CHATHAM COUNTY**



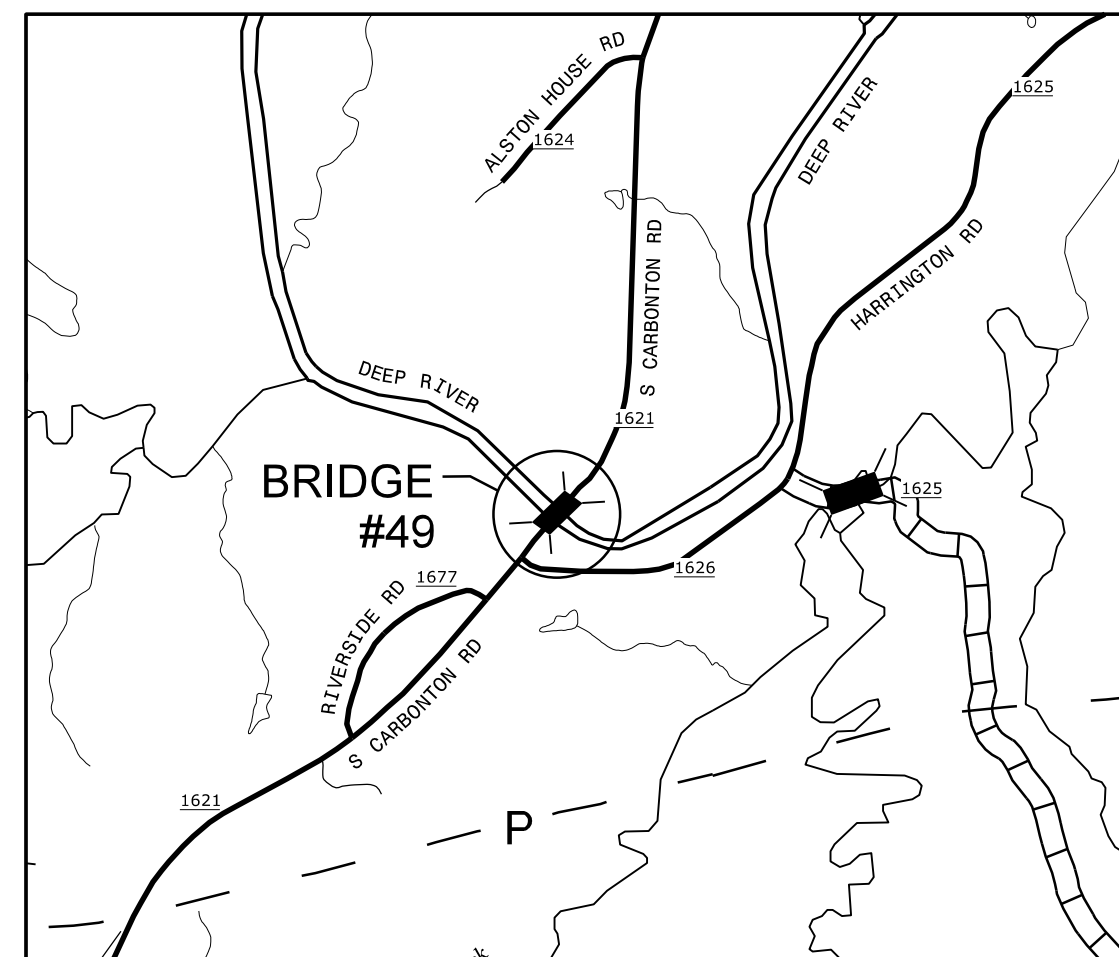
LOCATION: CHATHAM COUNTY:  
BRIDGE #7 ON US 1 SOUTH OVER DEEP RIVER BETWEEN SR 1012 (MONCURE PITTSBORO RD) AND SR 1466 (DEEP RIVER RD).  
BRIDGE #477 ON US 1 NORTH OVER DEEP RIVER BETWEEN SR 1012 (MONCURE PITTSBORO RD) AND SR 1466 (DEEP RIVER RD).

MOORE COUNTY:  
BRIDGE #49 ON SR 1621 (S CARBONTON RD) OVER DEEP RIVER BETWEEN SR 1626 (HARRINGTON RD) AND SR 1624 (ALSTON HOUSE RD).  
BRIDGE #72 ON NC 22 OVER DEEP RIVER BETWEEN SR 1470 (N MOORE RD) AND SR 1606 (RIVER RD).

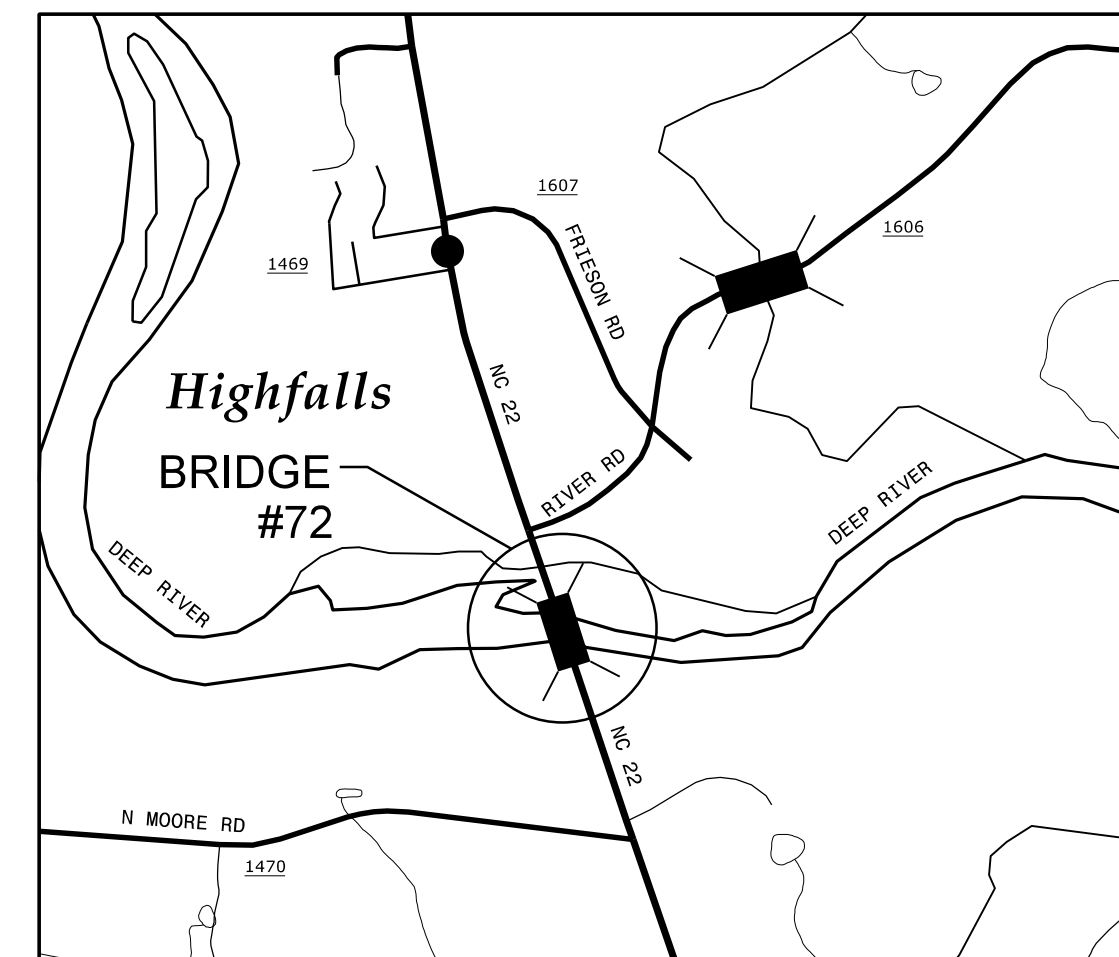
TYPE OF WORK: BRIDGE PRESERVATION - LATEX MODIFIED CONCRETE OVERLAY, PC OVERLAY, DECK REPAIRS, JOINT REPAIRS, SUBSTRUCTURE REPAIRS.



**CHATHAM COUNTY**  
**BRIDGE #7 & #477**



**MOORE COUNTY**  
**BRIDGE #49**

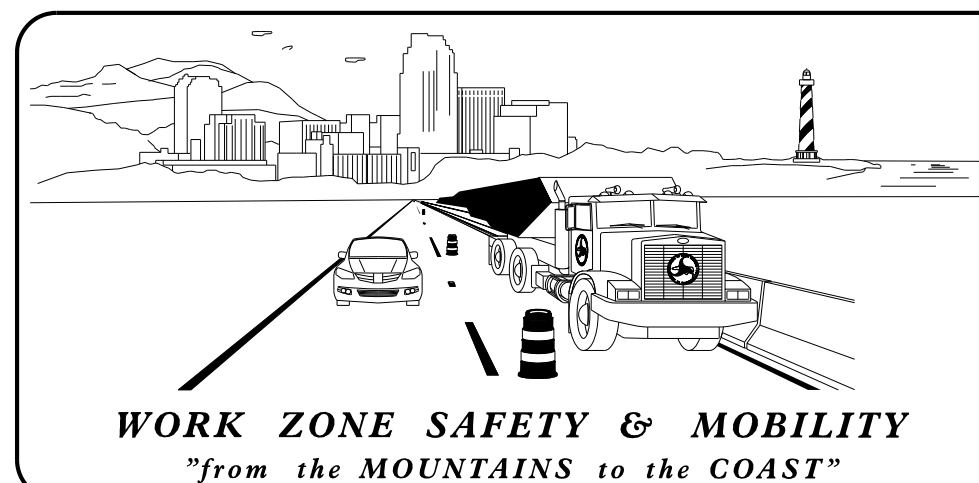


**MOORE COUNTY**  
**BRIDGE #72**

**INDEX OF SHEETS**

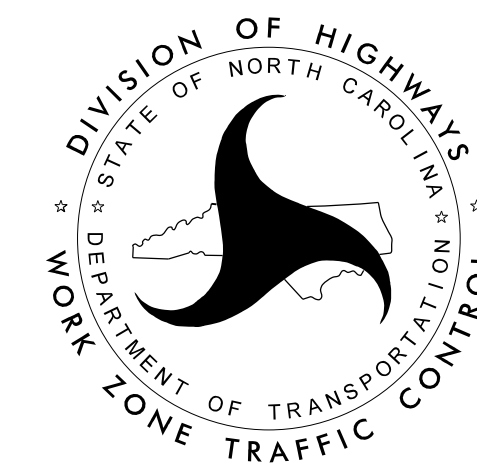
SHEET NO.	TITLE
TMP-1	TITLE SHEET, VICINITY MAP, AND INDEX OF SHEETS
TMP-1A	ROADWAY STANDARD DRAWINGS & LEGEND
TMP-1B	TRANSPORTATION OPERATIONS PLAN
TMP-1C	PHASING NOTES
TMP-2 THRU 3	DETOUR PLANS FOR RAMP CLOSURES (CHATHAM BRIDGE 007 & 477)
TMP-4 THRU 5	CHATHAM 7 ON US 1 SOUTH (LANE CLOSURES)
TMP-6 THRU 7	CHATHAM 477 ON US 1 NORTH (LANE CLOSURES)
TMP-8	MOORE 49 ON SR 1621 (LANE CLOSURES)
TMP-9	MOORE 72 ON NC 22 (LANE CLOSURES)

SHEET NO.  
TMP-1



PLANS PREPARED BY:  
**EMILY MURRAY, P.E.**  
PROJECT ENGINEER  
**ZACHARY THORNTON, P.E.**  
PROJECT DESIGN ENGINEER

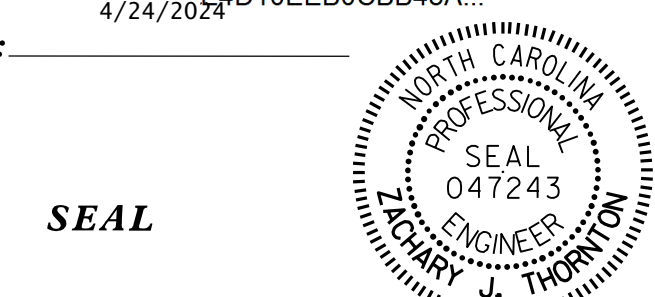
NCDOT CONTACTS:  
**TIM SHERRILL, P.E.**  
PROJECT MANAGER  
**DAVID STUTTS, P.E.**  
PROJECT ENGINEER



PLANS PREPARED BY:  
**VOLKERT**  
5430 Wade Park Blvd., Suite 410  
Raleigh, NC 27607  
Tel. 919-854-0344 Fax. 919-854-0355  
NC License No. F-0765

DOCUMENT NOT CONSIDERED FINAL  
UNLESS ALL SIGNATURES COMPLETED

APPROVED: *Zachary Thornton*  
DATE: 4/24/2024



SEAL

**TIP PROJECT: 15BPR.130**

# ROADWAY STANDARD DRAWINGS

THE FOLLOWING ROADWAY STANDARDS AS SHOWN IN "ROADWAY STANDARD DRAWINGS" - N.C. DEPARTMENT OF TRANSPORTATION - RALEIGH, N.C., DATED JANUARY 2024 ARE APPLICABLE TO THIS PROJECT AND BY REFERENCE HEREBY ARE CONSIDERED A PART OF THESE PLANS:

STD. NO.	TITLE
1101.01	WORK ZONE WARNING SIGNS
1101.02	TEMPORARY LANE CLOSURES
1101.03	TEMPORARY ROAD CLOSURES
1101.04	TEMPORARY SHOULDER CLOSURES
1101.05	WORK ZONE VEHICLE ACCESSES
1101.06	WARNING SIGNS FOR BLASTING ZONES
1101.11	TRAFFIC CONTROL DESIGN TABLES
1110.01	STATIONARY WORK ZONE SIGNS
1110.02	PORTABLE WORK ZONE SIGNS
1115.01	FLASHING ARROW BOARDS
1130.01	DRUMS
1135.01	CONES
1145.01	BARRICADES
1150.01	FLAGGING DEVICES
1160.01	TEMPORARY CRASH CUSHION
1165.01	TRUCK MOUNTED ATTENUATOR
1170.01	PORTABLE CONCRETE BARRIER
1180.01	SKINNY - DRUMS
1205.01	PAVEMENT MARKINGS - LINE TYPES AND OFFSETS
1205.02	PAVEMENT MARKINGS - TWO LANE AND MULTILANE ROADWAYS
1205.03	PAVEMENT MARKINGS - EXITS AND ENTRANCE RAMP
1205.04	PAVEMENT MARKINGS - INTERSECTIONS
1205.05	PAVEMENT MARKINGS - TURN LANES
1205.06	PAVEMENT MARKINGS - LANE DROPS
1205.07	PAVEMENT MARKINGS - PEDESTRIAN CROSSWALKS
1205.08	PAVEMENT MARKINGS - SYMBOLS AND WORD MESSAGES
1205.09	PAVEMENT MARKINGS - PAINTED ISLANDS
1205.10	PAVEMENT MARKINGS - SCHOOL AREAS
1205.11	PAVEMENT MARKINGS - RAILROAD CROSSINGS
1205.12	PAVEMENT MARKINGS - BRIDGES
1205.13	PAVEMENT MARKINGS - LANE REDUCTIONS
1205.14	PAVEMENT MARKINGS - ROUNDABOUTS
1205.15	PAVEMENT MARKINGS - REDUCED CONFLICT INTERSECTIONS
1250.01	RAISED PAVEMENT MARKERS - INSTALLATION SPACING
1251.01	RAISED PAVEMENT MARKERS - (PERMANENT AND TEMPORARY)
1261.01	GUARDRAIL AND BARRIER DELINEATORS - INSTALLATION SPACING
1261.02	GUARDRAIL AND BARRIER DELINEATORS - TYPES AND MOUNTING
1262.01	GUARDRAIL END DELINEATION
1264.01	OBJECT MARKERS - TYPES
1264.02	OBJECT MARKERS - INSTALLATION
1266.01	RAISED PAVEMENT MARKERS - TUBULAR MARKERS
1267.01	FLEXIBLE DELINEATORS - INSTALLATION
1267.02	FLEXIBLE DELINEATORS - SPACING TABLES
1267.03	FLEXIBLE DELINEATORS - INTERCHANGE PLACEMENT

# LEGEND

## GENERAL

- DIRECTION OF TRAFFIC FLOW
- DIRECTION OF PEDESTRIAN TRAFFIC FLOW
- EXIST. PVMT.
- NORTH ARROW
- PROPOSED PVMT.
- TEMP. SHORING (LOCATION PURPOSES ONLY)
- WORK AREA
- REMOVAL

## SIGNALS

- EXISTING
- PROPOSED
- TEMPORARY
- PORTABLE

## PAVEMENT MARKINGS

- EXISTING LINES
- TEMPORARY LINES

## TRAFFIC CONTROL DEVICES

- BARRICADE (TYPE III)
- CONE
- DRUM
- SKINNY DRUM
- TUBULAR MARKER
- TEMPORARY CRASH CUSHION
- FLASHING ARROW BOARD
- FLAGGER
- LAW ENFORCEMENT
- TRUCK MOUNTED ATTENUATOR (TMA)
- CHANGEABLE MESSAGE SIGN

## TEMPORARY SIGNING

- PORTABLE SIGN
- STATIONARY SIGN
- STATIONARY OR PORTABLE SIGN

## PAVEMENT MARKERS

- CRYSTAL/CRYSTAL
- CRYSTAL/RED
- YELLOW/YELLOW

## PAVEMENT MARKING SYMBOLS

- PAVEMENT MARKING SYMBOLS

## PERMANENT PAVEMENT MARKINGS

ROAD NAME	SYMBOL	DESCRIPTION
SR 1621 & NC 22	POLYUREA (4", 20 MIL)	
	V1	WHITE EDGELINE
	V11	YELLOW SINGLE CENTER
	V12	10 FT. YELLOW SKIP
	V13	YELLOW DOUBLE CENTER
US 1 (NB & SB)	POLYUREA (6", 20 MIL)	
	V20	WHITE EDGELINE
	V22	10 FT. WHITE SKIP
	V30	YELLOW EDGELINE

4/24/2024  
 P:\PROJECTS\Engineering Projects\104203\16 15BPRJ30 High Value Bridge Preservation\WZTC\Plan Sheets\15BPRJ30\_TMP\_01\_TSH.dgn  
 User: zachary.thornton

DocuSigned by:

APPROVED:

DATE: 4/24/2024

SEAL

**ROADWAY STANDARD DRAWINGS & LEGEND**

DOCUMENT NOT CONSIDERED FINAL UNLESS ALL SIGNATURES COMPLETED

## GENERAL NOTES

CHANGES MAY BE REQUIRED WHEN PHYSICAL DIMENSIONS IN THE DETAIL DRAWINGS, STANDARD DETAILS, AND ROADWAY DETAILS ARE NOT ATTAINABLE TO MEET FIELD CONDITIONS OR RESULT IN DUPLICATE OR UNDESIRED OVERLAPPING OF DEVICES. MODIFICATION MAY INCLUDE: MOVING, SUPPLEMENTING, COVERING, OR REMOVAL OF DEVICES AS DIRECTED BY THE ENGINEER.

THE FOLLOWING GENERAL NOTES APPLY TO ALL TIMES FOR THE DURATION OF THE CONSTRUCTION PROJECT EXCEPT WHEN OTHERWISE NOTED IN THE PLAN OR DIRECTED BY THE ENGINEER.

### TIME RESTRICTIONS

A. DO NOT CLOSE OR NARROW TRAVEL LANES AS FOLLOWS:

ROAD NAMES	TIME RESTRICTIONS
US 1 (NBL)	BRIDGE DECK WORK: MONDAY THRU SUNDAY 6 A.M. - 7 P.M. DRIFT REMOVAL WORK: MONDAY THRU SUNDAY 3 P.M. - 9 A.M.
US 1 (SBL)	BRIDGE DECK WORK: MONDAY THRU SUNDAY 6 A.M. - 7 P.M. DRIFT REMOVAL WORK: MONDAY THRU SUNDAY 3 P.M. - 9 A.M.
ALL OTHER ROADS	NONE

B. DO NOT CLOSE OR NARROW TRAVEL LANES DURING HOLIDAYS AND SPECIAL EVENTS AS FOLLOWS:

- | ROAD NAMES | HOLIDAY  |
|------------|--|
| ALL ROADS  | <ol style="list-style-type: none"> <li>FOR ANY UNEXPECTED OCCURRENCE THAT CREATES UNUSUALLY HIGH TRAFFIC VOLUMES AS DIRECTED BY THE ENGINEER.</li> <li>FOR NEW YEAR'S, BETWEEN THE HOURS OF 6 A.M. DECEMBER 30th TO 7 P.M. JANUARY 2ND. IF NEW YEAR'S DAY IS ON A FRIDAY, SATURDAY, SUNDAY, OR MONDAY THEN UNTIL 7 P.M. THE FOLLOWING TUESDAY.</li> <li>FOR EASTER, BETWEEN THE HOURS OF 6 A.M. THURSDAY AND 7 P.M. MONDAY.</li> <li>FOR MEMORIAL DAY, BETWEEN THE HOURS OF 6 A.M. FRIDAY TO 7 P.M. TUESDAY.</li> <li>FOR INDEPENDENCE DAY, BETWEEN THE HOURS OF 6 A.M. THE DAY BEFORE INDEPENDENCE DAY AND 7 P.M. THE DAY AFTER INDEPENDENCE DAY.<br/><br/>IF INDEPENDENCE DAY IS ON A FRIDAY, SATURDAY, SUNDAY, OR MONDAY THEN BETWEEN THE HOURS OF 6 A.M. THE THURSDAY BEFORE INDEPENDENCE DAY AND 7 P.M. THE TUESDAY AFTER INDEPENDENCE DAY.</li> <li>FOR LABOR DAY, BETWEEN THE HOURS OF 6 A.M. FRIDAY AND 7 P.M. TUESDAY.</li> <li>FOR THANKSGIVING DAY, BETWEEN THE HOURS OF 6 A.M. TUESDAY TO 7 P.M. MONDAY.</li> <li>FOR CHRISTMAS, BETWEEN THE HOURS OF 6 A.M. THE FRIDAY BEFORE THE WEEK OF CHRISTMAS DAY AND 7 P.M. THE FOLLOWING TUESDAY THE WEEK AFTER CHRISTMAS.</li> </ol> |

### LANE AND SHOULDER CLOSURE REQUIREMENTS

- C. REMOVE LANE CLOSURE DEVICES FROM THE LANE WHEN WORK IS NOT BEING PERFORMED BEHIND THE LANE CLOSURE OR WHEN A LANE CLOSURE IS NO LONGER NEEDED, OR AS DIRECTED BY THE ENGINEER.
- D. WHEN PERSONNEL AND/OR EQUIPMENT ARE WORKING WITHIN A LANE OF TRAVEL OF AN UNDIVIDED OR DIVIDED FACILITY, CLOSE THE LANE ACCORDING TO THE TRAFFIC CONTROL PLANS, ROADWAY STANDARD DRAWINGS, OR AS DIRECTED BY THE ENGINEER. CONDUCT THE WORK SO THAT ALL PERSONNEL AND/OR EQUIPMENT REMAIN WITHIN THE CLOSED TRAVEL LANE.
- E. DO NOT INSTALL MORE THAN ONE SIMULTANEOUS LANE CLOSURE IN ANY ONE DIRECTION ON ALL ROADS.
- F. USE SEQUENTIAL FLASHING WARNING LIGHTS ON DRUMS USED FOR THE MERGING TAPERS OF NIGHTTIME LANE CLOSURES IN ACCORDANCE WITH SECTION 1140 IN THE STANDARD SPECIFICATIONS FOR ROADS AND STRUCTURES.
- G. NOTIFY THE NCDOT STATEWIDE TRANSPORTATION OPERATIONS CENTER (STOC) AT 877-627-7862 APPROXIMATELY 30 MINUTES PRIOR TO INSTALLING AND WITHIN 15 MINUTES AFTER REMOVING LANE CLOSURES ON INTERSTATES, FREEWAYS, CONTROLLED ACCESS FACILITIES, AND US ROUTES.

### PAVEMENT EDGE DROP-OFF REQUIREMENTS

H. DO NOT EXCEED A DIFFERENCE OF 2 INCHES IN ELEVATION BETWEEN OPEN LANES OF TRAFFIC FOR NOMINAL LIFTS OF 1.5 INCHES. INSTALL ADVANCE WARNING "UNEVEN LANES" SIGNS (W8-11) 500 FT IN ADVANCE AND A MINIMUM OF ONCE EVERY HALF MILE THOUGHOUT THE UNEVEN AREA.

### TRAFFIC PATTERN ALTERATIONS

I. NOTIFY THE ENGINEER THIRTY (30) CALENDAR DAYS PRIOR TO ANY TRAFFIC PATTERN ALTERATION.

### SIGNING

- J. INSTALL ADVANCED WORK ZONE WARNING SIGNS WHEN WORK IS WITHIN 40 FT FROM THE EDGE OF TRAVEL LANE AND NO MORE THAN THREE(3) DAYS PRIOR TO THE BEGINNING OF CONSTRUCTION.
- K. PROVIDE SIGNING AND DEVICES REQUIRED TO CLOSE THE ROAD ACCORDING TO THE ROADWAY STANDARD DRAWINGS AND TRAFFIC CONTROL PLANS.  
  
PROVIDE SIGNING REQUIRED FOR THE OFF-SITE DETOUR ROUTE AS SHOWN IN THE TRAFFIC CONTROL PLANS.
- L. COVER OR REMOVE ALL SIGNS AND DEVICES REQUIRED TO CLOSE THE ROAD WHEN ROAD CLOSURE IS NOT IN OPERATION.  
  
COVER OR REMOVE ALL SIGNS AND DEVICES REQUIRED FOR THE OFF-SITE DETOUR WHEN THE DETOUR IS NOT IN OPERATION.
- M. ENSURE ALL NECESSARY SIGNING IS IN PLACE PRIOR TO ALTERING ANY TRAFFIC PATTERN.

### TRAFFIC CONTROL DEVICES

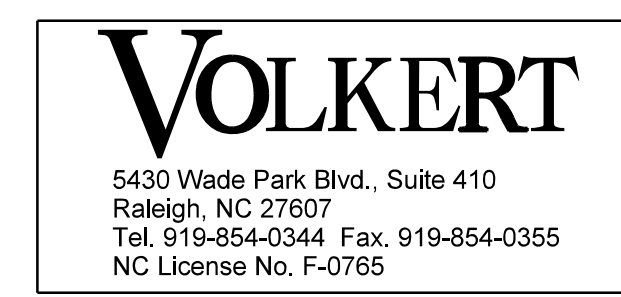
- N. SPACE CHANNELIZING DEVICES IN WORK AREAS NO GREATER IN FEET THAN TWICE THE POSTED SPEED LIMIT (MPH), EXCEPT 10 FT ON-CENTER IN RADII, AND 3 FT OFF THE EDGE OF AN OPEN TRAVELWAY, WHEN LANE CLOSURES ARE NOT IN EFFECT. REFER TO SECTIONS 1130 (DRUMS), 1135 (CONES), AND 1180 (SKINNY DRUMS) FOR ADDITIONAL REQUIREMENTS.
- O. PLACE TYPE III BARRICADES, WITH "ROAD CLOSED" SIGN (R11-2) ATTACHED, OF SUFFICIENT LENGTH TO CLOSE THE ENTIRE ROADWAY.
- P. PLACE ADDITIONAL SETS OF THREE CHANNELIZING DEVICES PERPENDICULAR TO THE EDGE OF TRAVELWAY ON 1000 FT CENTERS WHEN UNOPENED LANES ARE CLOSED TO TRAFFIC.

### PAVEMENT MARKING AND MARKERS

- Q. INSTALL FINAL PAVEMENT MARKING AND FINAL PAVEMENT MARKERS ON THE FINAL SURFACE COURSE IN ACCORDANCE WITH PAVEMENT MARKING PLANS.
- | ROAD NAMES<br>(BRIDGES ONLY) | MARKING<br>POLYUREA | MARKERS<br>RAISED |
|------------------------------|---------------------|-------------------|
|                              |                     |                   |
- R. TIE PROPOSED PAVEMENT MARKING LINES TO EXISTING PAVEMENT MARKING LINES.
- S. REMOVE/REPLACE ANY CONFLICTING/DAMAGED PAVEMENT MARKINGS AND MARKERS BY THE END OF EACH DAY'S OPERATIONS.

### MISCELLANEOUS

T. LAW ENFORCEMENT SHALL BE USED TO MAINTAIN TRAFFIC THROUGH THE WORK AREA AND/OR INTERSECTIONS AS DIRECTED BY THE ENGINEER.



DocuSigned by: APPROVED: <i>Eachary Thornton</i> DATE: 4/24/2024 54D10EEB0CB48A	SEAL 		<b>TRANSPORTATION OPERATIONS PLAN</b>
<b>DOCUMENT NOT CONSIDERED FINAL UNLESS ALL SIGNATURES COMPLETED</b>			

## PHASING NOTES

ALL LANE CLOSURES SHALL BE IN ACCORDANCE WITH THE 2024 EDITION OF THE NCDOT STANDARD SPECIFICATIONS, STANDARD DRAWINGS AND THE TRAFFIC MANAGEMENT PLAN.

### 180007 BRIDGE PRESERVATION

USING RSD 1101.01, INSTALL WORK ZONE ADVANCED WARNING SIGNS ON US-1

- STEP 1: INSTALL CMS BOARDS ON MONCURE PITTSBORO RD ACCORDING TO SHEET TMP-2, 7 DAYS PRIOR TO RAMP CLOSURE.
- STEP 2: USING TMP-2, INSTALL OFFSITE DETOUR SIGNS AND DEVICES. CONTRACTOR MAY CLOSE US-1 SB RAMP FROM MONCURE PITTSBORO RD.
- STEP 3: INSTALL SIGNS AND DEVICES ON US-1 USING RSD 1101.02 SHEET 4 OF 19 AND TMP-4 OR TMP-5 DEPENDING ON WHICH SB LANE CLOSURE IS TO OCCUR. THEN PRESERVATION WORK ON BRIDGE MAY BEGIN IN WORK ZONE.
- STEP 4: AT THE END OF EACH WORKNIGHT REMOVE OR COVER ALL SIGNS AND DEVICES ON ALL ROADS AND RETURN TRAFFIC TO EXISTING PATTERN ON ALL ROADS.

*REPEAT STEPS 3 THROUGH 4 NIGHTLY UNTIL ALL BRIDGE PRESERVATION ACTIVITIES ARE COMPLETED*

- STEP 5: REPLACE ANY EXISTING PAVEMENT MARKINGS THAT WERE OBLITERATED DURING CONSTRUCTION.
- STEP 6: ONCE BRIDGE PRESERVATION WORK IS COMPLETE, REMOVE ALL WZTC SIGNS AND DEVICES AND RETURN TRAFFIC TO ITS EXISTING PATTERN.

### 180477 BRIDGE PRESERVATION

USING RSD 1101.01, INSTALL WORK ZONE ADVANCED WARNING SIGNS ON US-1

- STEP 1: INSTALL CMS BOARDS ON DEEP RIVER RD ACCORDING TO SHEET TMP-3, 7 DAYS PRIOR TO RAMP CLOSURE.
- STEP 2: USING TMP-3, INSTALL OFFSITE DETOUR SIGNS AND DEVICES. CONTRACTOR MAY CLOSE US-1 NB RAMP FROM DEEP RIVER RD.
- STEP 3: INSTALL SIGNS AND DEVICES ON US-1 USING RSD 1101.02 SHEET 4 OF 19 AND TMP-6 OR TMP-7 DEPENDING ON WHICH NB LANE CLOSURE IS TO OCCUR. THEN PRESERVATION WORK ON BRIDGE MAY BEGIN IN WORK ZONE.
- STEP 4: AT THE END OF EACH WORKNIGHT REMOVE OR COVER ALL SIGNS AND DEVICES ON ALL ROADS AND RETURN TRAFFIC TO EXISTING PATTERN ON ALL ROADS.

*REPEAT STEPS 3 THROUGH 4 NIGHTLY UNTIL ALL BRIDGE PRESERVATION ACTIVITIES ARE COMPLETED*

- STEP 5: REPLACE ANY EXISTING PAVEMENT MARKINGS THAT WERE OBLITERATED DURING CONSTRUCTION.
- STEP 6: ONCE BRIDGE PRESERVATION WORK IS COMPLETE, REMOVE ALL WZTC SIGNS AND DEVICES AND RETURN TRAFFIC TO ITS EXISTING PATTERN.

ALL LANE CLOSURES SHALL BE IN ACCORDANCE WITH THE 2024 EDITION OF THE NCDOT STANDARD SPECIFICATIONS, STANDARD DRAWINGS AND THE TRAFFIC MANAGEMENT PLAN.

### 620049 BRIDGE PRESERVATION

USING RSD 1101.01, INSTALL WORK ZONE ADVANCED WARNING SIGNS ON S CARBONTON RD

- STEP 1: INSTALL SIGNS AND DEVICES ON S CARBONTON RD USING RSD 1101.02 SHEET 4 OF 19 AND TMP-8. CONTRACTOR MAY CLOSE ONE LANE AT A TIME AND BEGIN PRESERVATION WORK ON BRIDGE.
- STEP 2: AT THE END OF EACH WORKDAY REMOVE OR COVER ALL SIGNS AND DEVICES ON ALL ROADS AND RETURN TRAFFIC TO EXISTING PATTERN ON ALL ROADS.

*REPEAT STEPS 1 THROUGH 2 DAILY UNTIL ALL BRIDGE PRESERVATION ACTIVITIES ARE COMPLETED*

- STEP 3: REPLACE ANY EXISTING PAVEMENT MARKINGS THAT WERE OBLITERATED DURING CONSTRUCTION.
- STEP 4: ONCE BRIDGE PRESERVATION WORK IS COMPLETE, REMOVE ALL WZTC SIGNS AND DEVICES, AND RETURN TRAFFIC TO ITS EXISTING PATTERN.

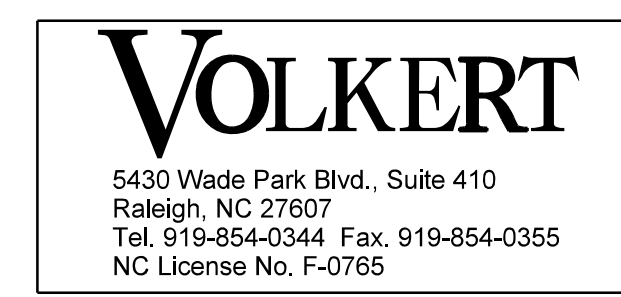
### 620072 BRIDGE PRESERVATION

USING RSD 1101.01, INSTALL WORK ZONE ADVANCED WARNING SIGNS ON NC 22

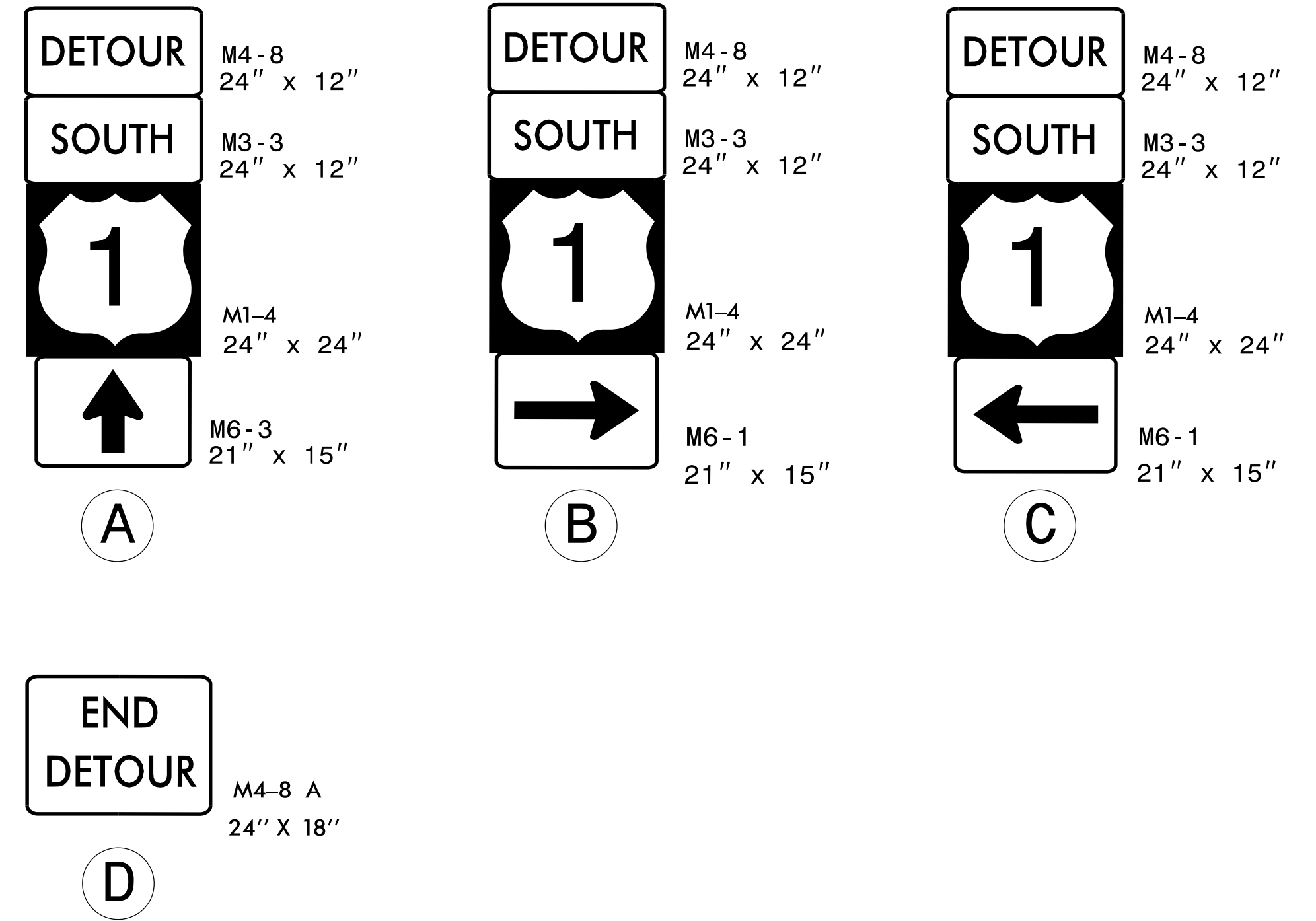
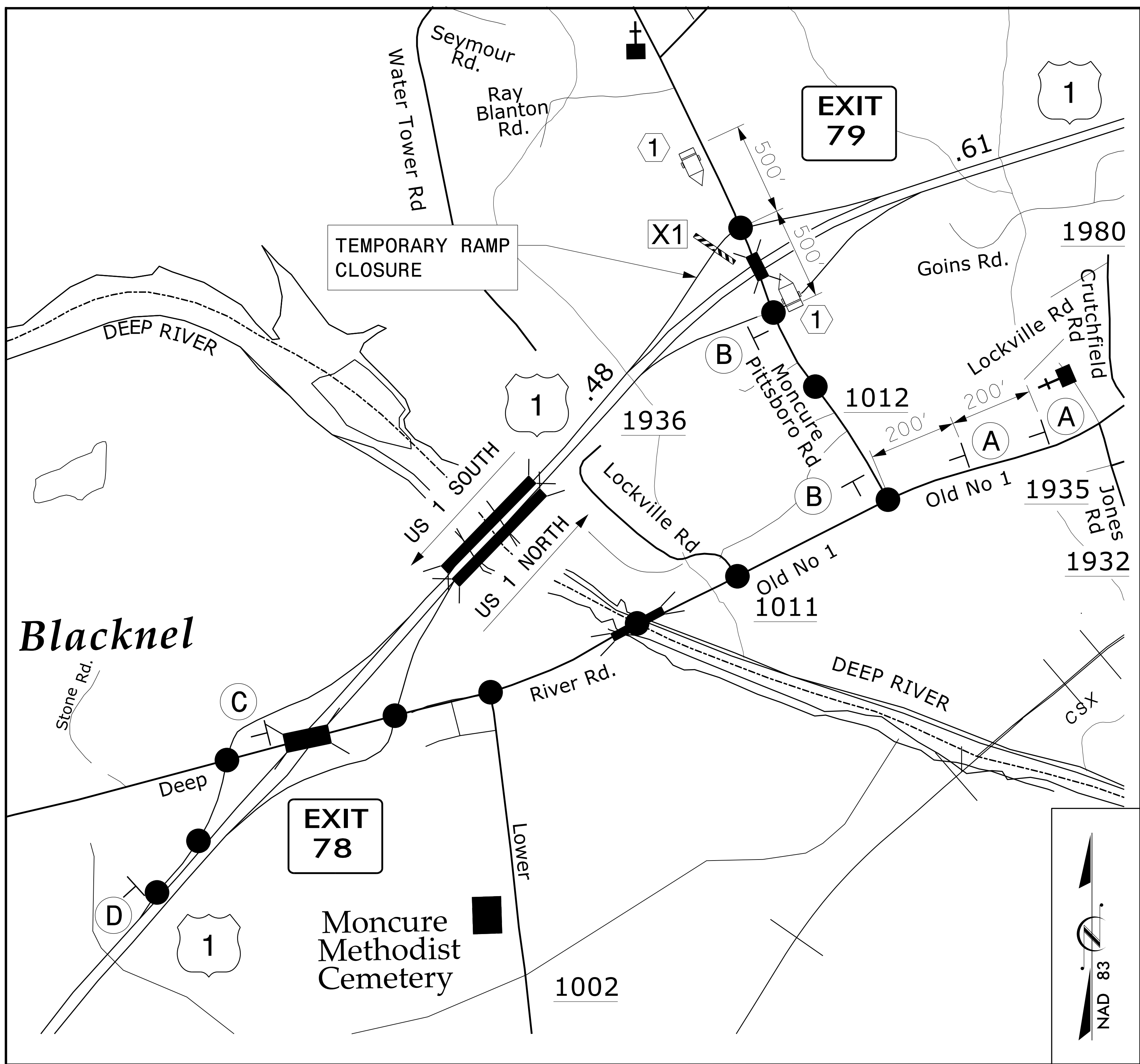
- STEP 1: INSTALL SIGNS AND DEVICES ON NC 22 USING RSD 1101.02 SHEET 4 OF 19 AND TMP-9. CONTRACTOR MAY CLOSE ONE LANE AT A TIME AND BEGIN PRESERVATION WORK ON BRIDGE.
- STEP 2: AT THE END OF EACH WORKDAY REMOVE OR COVER ALL SIGNS AND DEVICES ON ALL ROADS AND RETURN TRAFFIC TO EXISTING PATTERN ON ALL ROADS.

*REPEAT STEPS 1 THROUGH 2 DAILY UNTIL ALL BRIDGE PRESERVATION ACTIVITIES ARE COMPLETED*

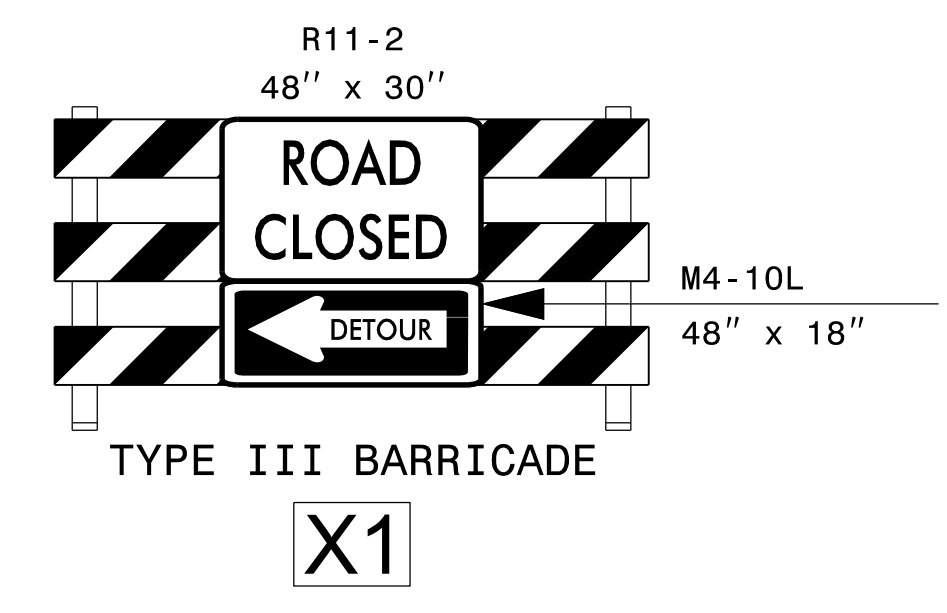
- STEP 3: REPLACE ANY EXISTING PAVEMENT MARKINGS THAT WERE OBLITERATED DURING CONSTRUCTION.
- STEP 4: ONCE BRIDGE PRESERVATION WORK IS COMPLETE, REMOVE ALL WZTC SIGNS AND DEVICES, AND RETURN TRAFFIC TO ITS EXISTING PATTERN.



<p>DocuSigned by: <i>Zachary Thornton</i></p> <p>APPROVED: <i>Zachary Thornton</i></p> <p>DATE: 4/30/2024</p> <p style="text-align: center;">SEAL</p>			<p><b>PHASING NOTES</b></p>
DOCUMENT NOT CONSIDERED FINAL UNLESS ALL SIGNATURES COMPLETED			



7 DAYS PRIOR TO CLOSURE		DURING CLOSURE	
MESSAGE NO. 1	MESSAGE NO. 2	MESSAGE NO. 1	MESSAGE NO. 2
US 1 SB RAMP CLOSED	STARTING (DAY) (TIME)	US 1 SB RAMP CLOSED	FOLLOW DETOUR ROUTE
CHANGEABLE MESSAGE SIGN		CHANGEABLE MESSAGE SIGN	



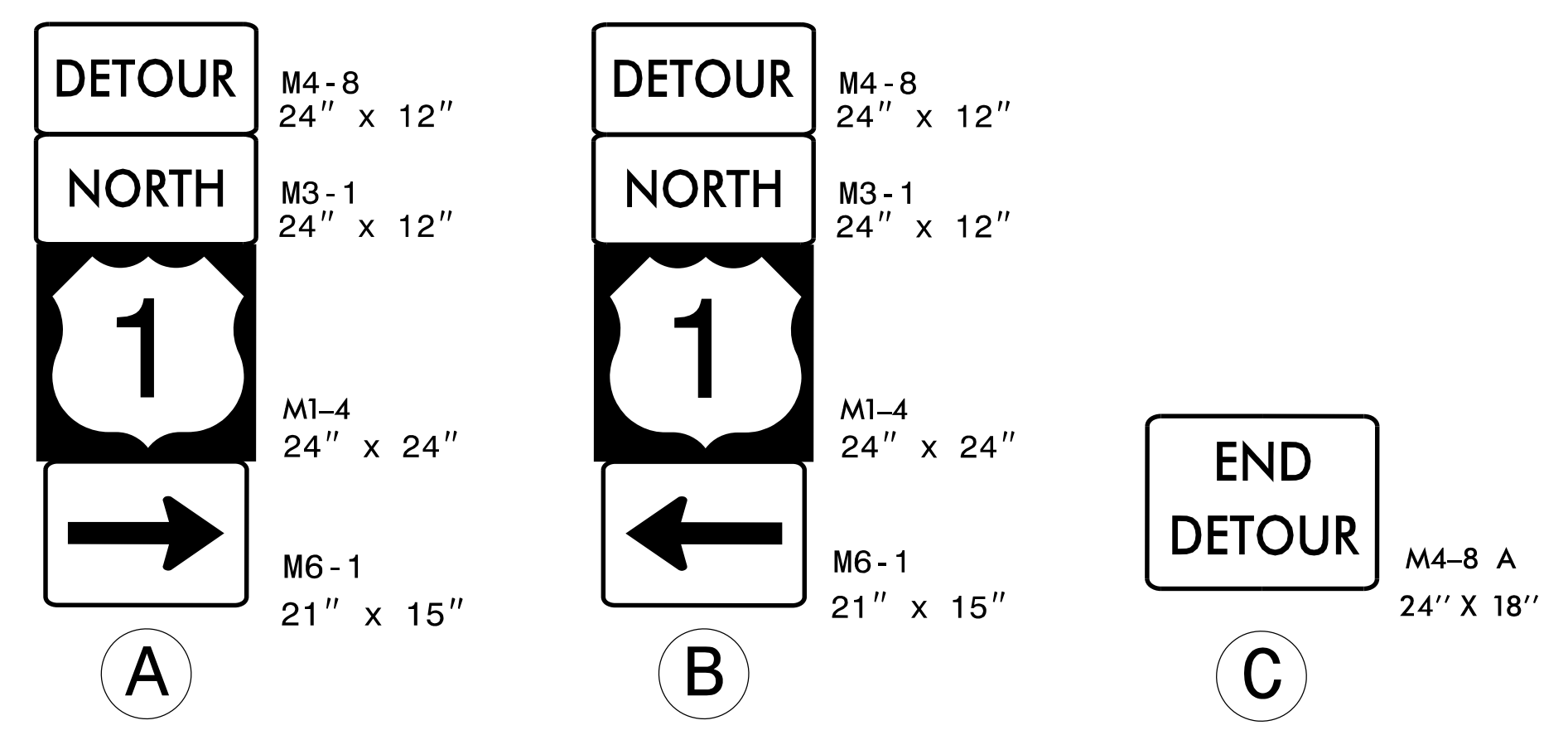
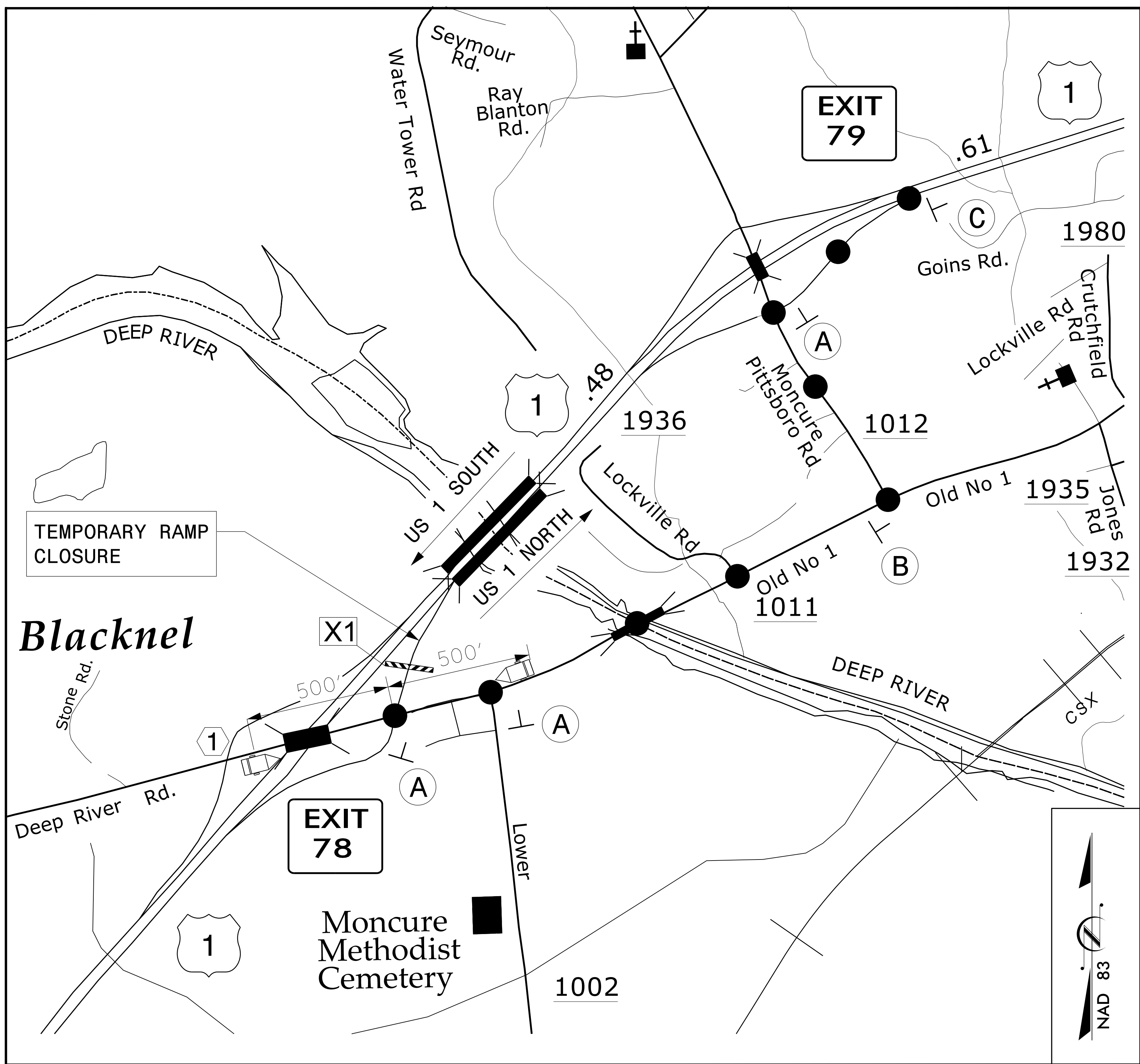
**VOLKERT**  
 5430 Wade Park Blvd., Suite 410  
 Raleigh, NC 27607  
 Tel. 919-854-0344 Fax. 919-854-0355  
 NC License No. F-0765

DocuSigned by:  
*Bachary Thornton*  
 DATE: 4/24/2024  
 SEAL

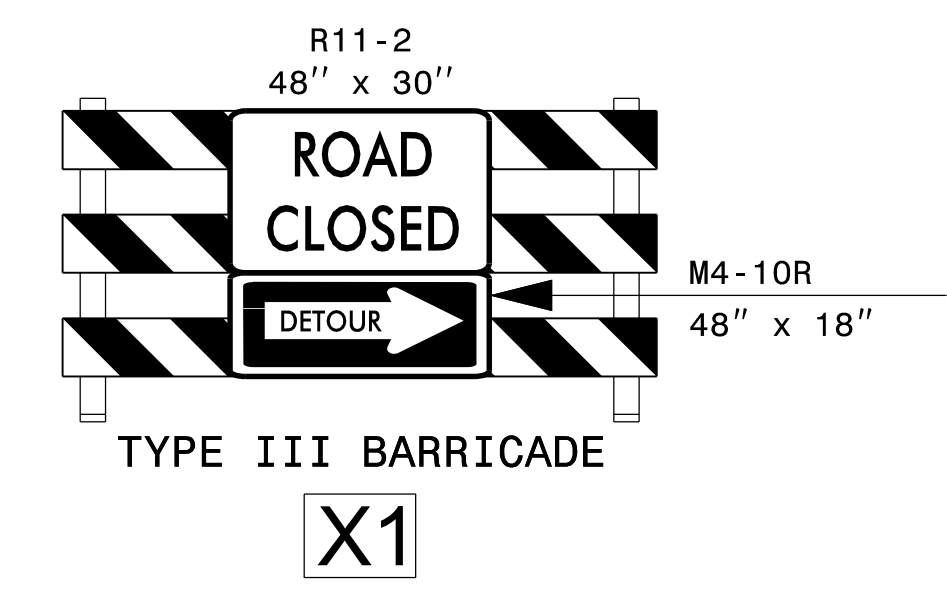


DETOUR PLAN  
 FOR RAMP CLOSURES  
 CHATHAM BRIDGE 7

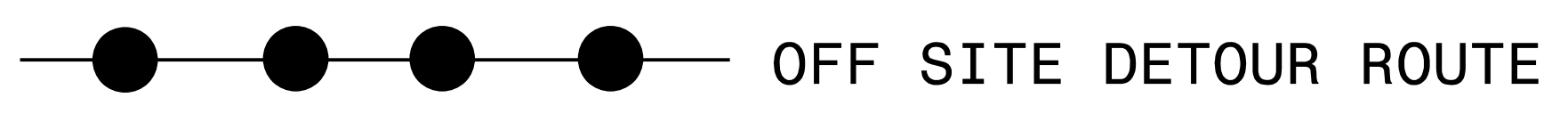
**DOCUMENT NOT CONSIDERED FINAL  
 UNLESS ALL SIGNATURES COMPLETED**



7 DAYS PRIOR TO CLOSURE		DURING CLOSURE	
MESSAGE NO. 1	MESSAGE NO. 2	MESSAGE NO. 1	MESSAGE NO. 2
US 1 NB RAMP CLOSED	STARTING (DAY) (TIME)	US 1 NB RAMP CLOSED	FOLLOW DETOUR ROUTE
CHANGEABLE MESSAGE SIGN		CHANGEABLE MESSAGE SIGN	



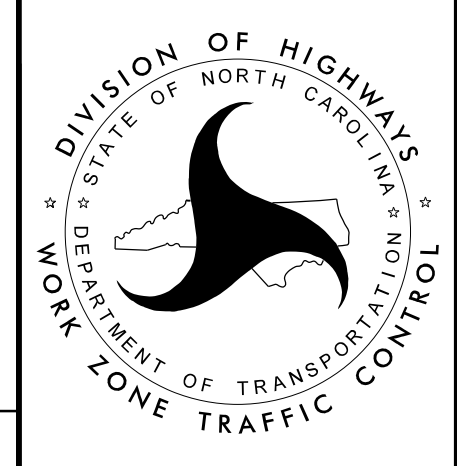
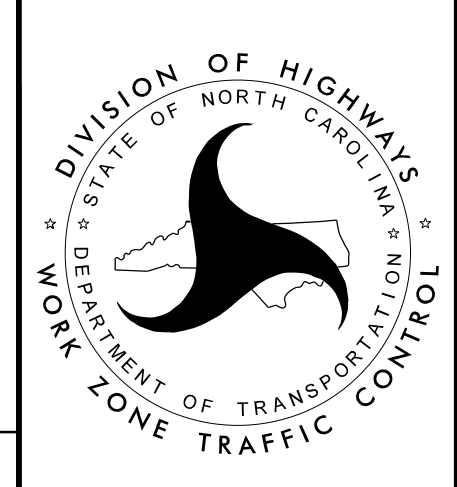
### VICINITY MAP



N.T.S.

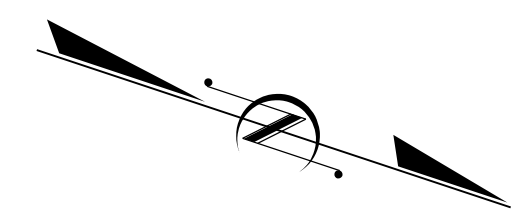
**VOLKERT**  
 5430 Wade Park Blvd., Suite 410  
 Raleigh, NC 27607  
 Tel. 919-854-0344 Fax. 919-854-0355  
 NC License No. F-0765

DocuSigned by:  
*Bachary Thornton*  
 DATE: 4/24/2024  
 SEAL  
 DOCUMENT NOT CONSIDERED FINAL  
 UNLESS ALL SIGNATURES COMPLETED

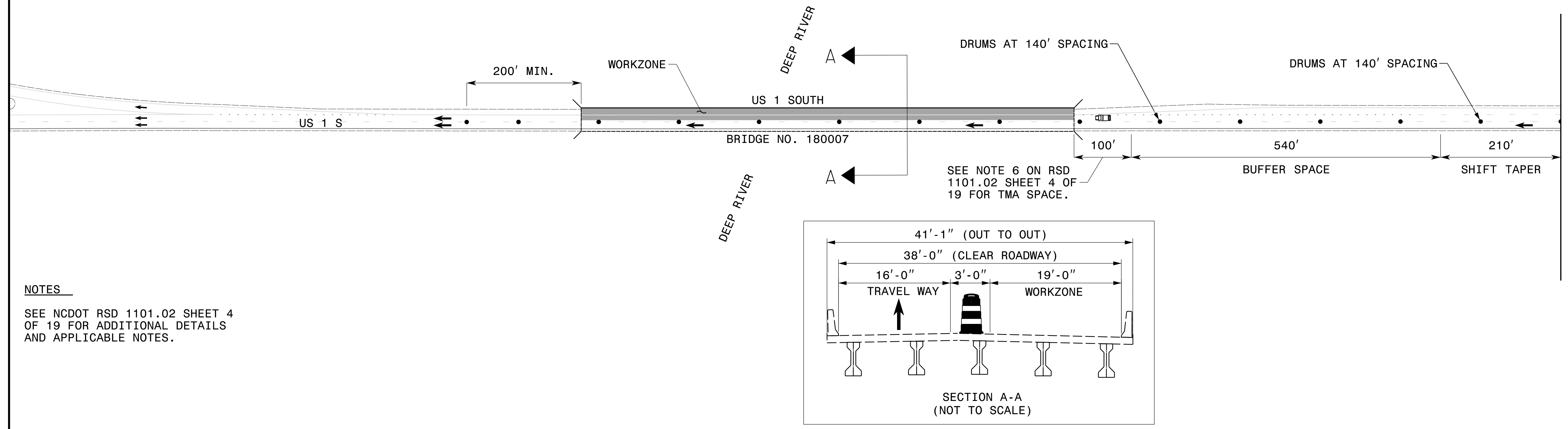


DETOUR PLAN  
 FOR RAMP CLOSURES  
 CHATHAM BRIDGE 477

**-US 1 SOUTHBOUND-  
PHASE 1**

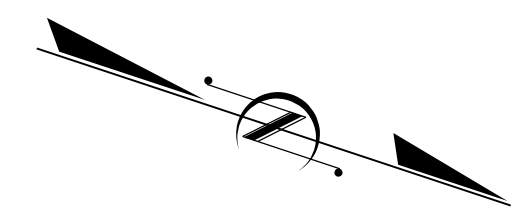


MATCHLINE SEE BELOW

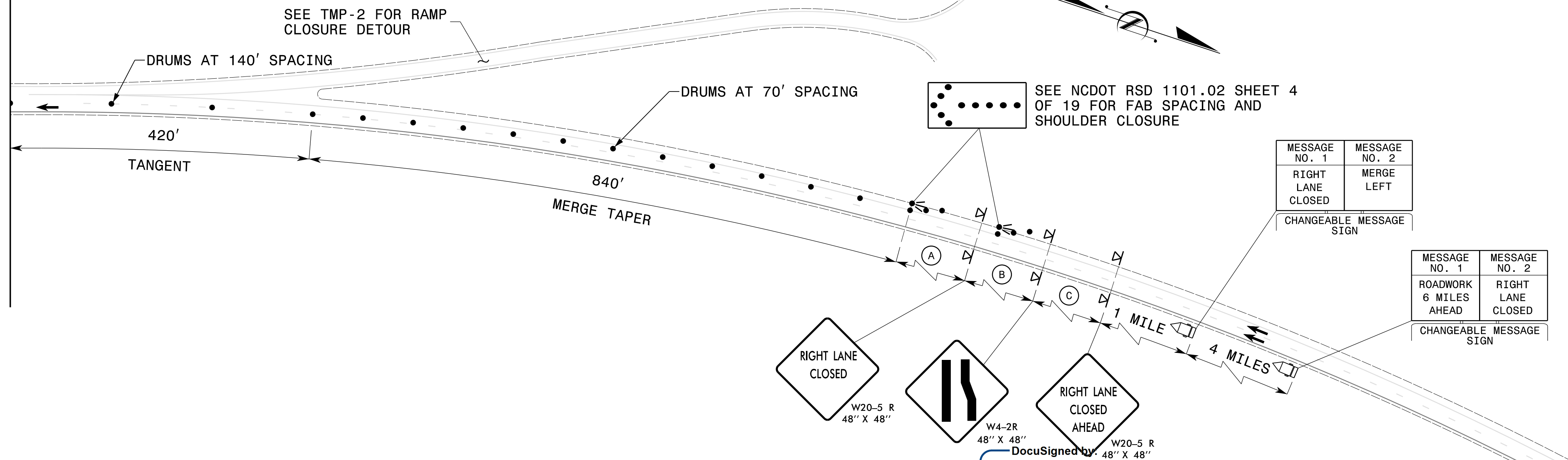


**NOTES**  
SEE NCDOT RSD 1101.02 SHEET 4 OF 19 FOR ADDITIONAL DETAILS AND APPLICABLE NOTES.

**-US 1 SOUTHBOUND-  
PHASE 1**



MATCHLINE SEE ABOVE



**NOTES**  
SEE NCDOT RSD 1101.02 SHEET 4 OF 19 FOR ADDITIONAL DETAILS AND APPLICABLE NOTES.

(A)	1000'
(B)	1500'
(C)	2700'

**VOLKERT**  
5430 Wade Park Blvd., Suite 410  
Raleigh, NC 27607  
Tel. 919-854-0344 Fax. 919-854-0355  
NC License No. F-0765

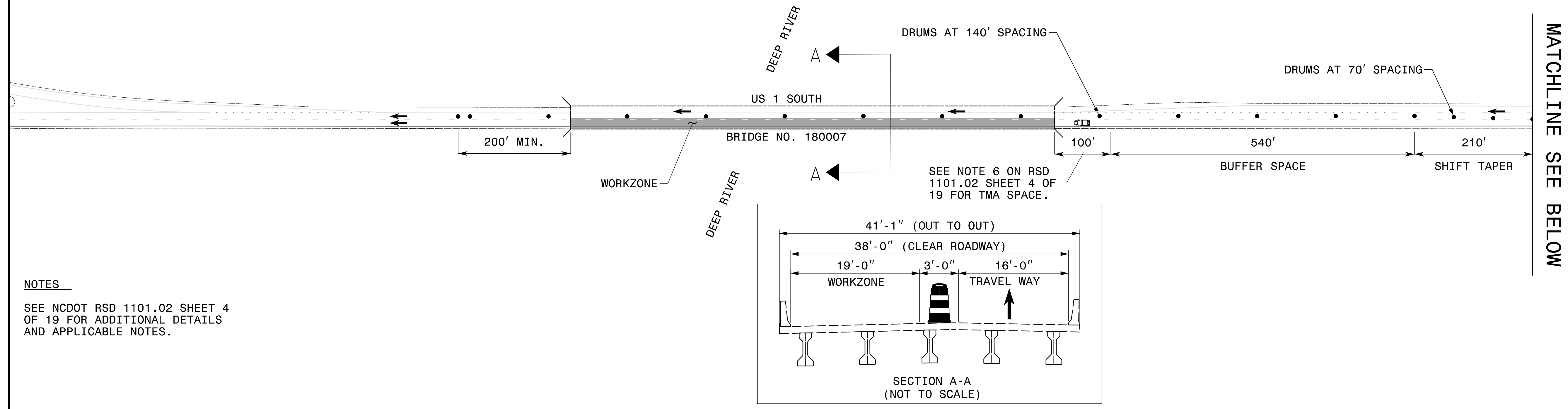
APPROVED: *Zachary Thornton*  
DATE: 4/24/2023  
SEAL  
DOCUMENT NOT CONSIDERED FINAL UNLESS ALL SIGNATURES COMPLETED

SEAL  
NORTH CAROLINA PROFESSIONAL ENGINEER  
ZACHARY J. THORNTON  
047243

CHATHAM 7  
ON US 1 SOUTH  
LANE CLOSURES

DEPARTMENT OF TRANSPORTATION  
DIVISION OF HIGHWAYS  
WORK ZONE TRAFFIC CONTROL

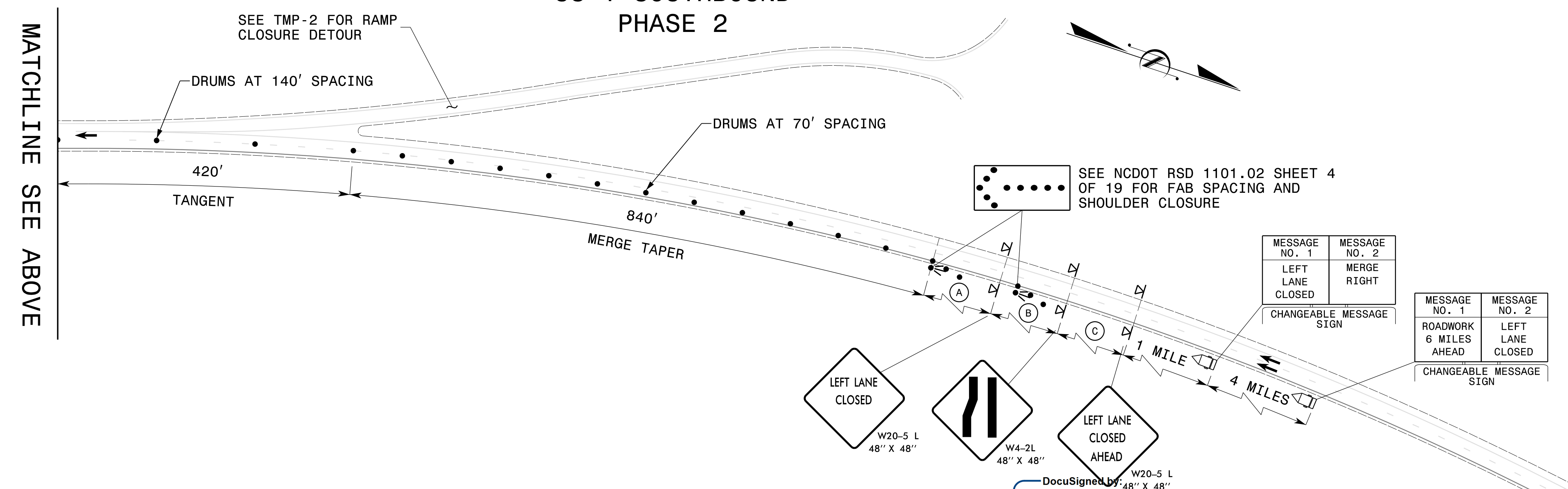
**-US 1 SOUTHBOUND-  
PHASE 2**



MATCHLINE SEE BELOW

**NOTES**  
SEE NCDOT RSD 1101.02 SHEET 4 OF 19 FOR ADDITIONAL DETAILS AND APPLICABLE NOTES.

**-US 1 SOUTHBOUND-  
PHASE 2**



MATCHLINE SEE ABOVE

**NOTES**  
SEE NCDOT RSD 1101.02 SHEET 4 OF 19 FOR ADDITIONAL DETAILS AND APPLICABLE NOTES.

(A)	1000'
(B)	1500'
(C)	2700'

**VOLKERT**  
5430 Wade Park Blvd., Suite 410  
Raleigh, NC 27607  
Tel. 919-854-0344 Fax. 919-854-0355  
NC License No. F-0765

APPROVED: *Barthary Thornton*  
DATE: 4/24/2024  
E4D10EEB0CBB48A  
SEAL  
NORTH CAROLINA PROFESSIONAL ENGINEER SEAL 047243  
BARTHARY J. THORNTON

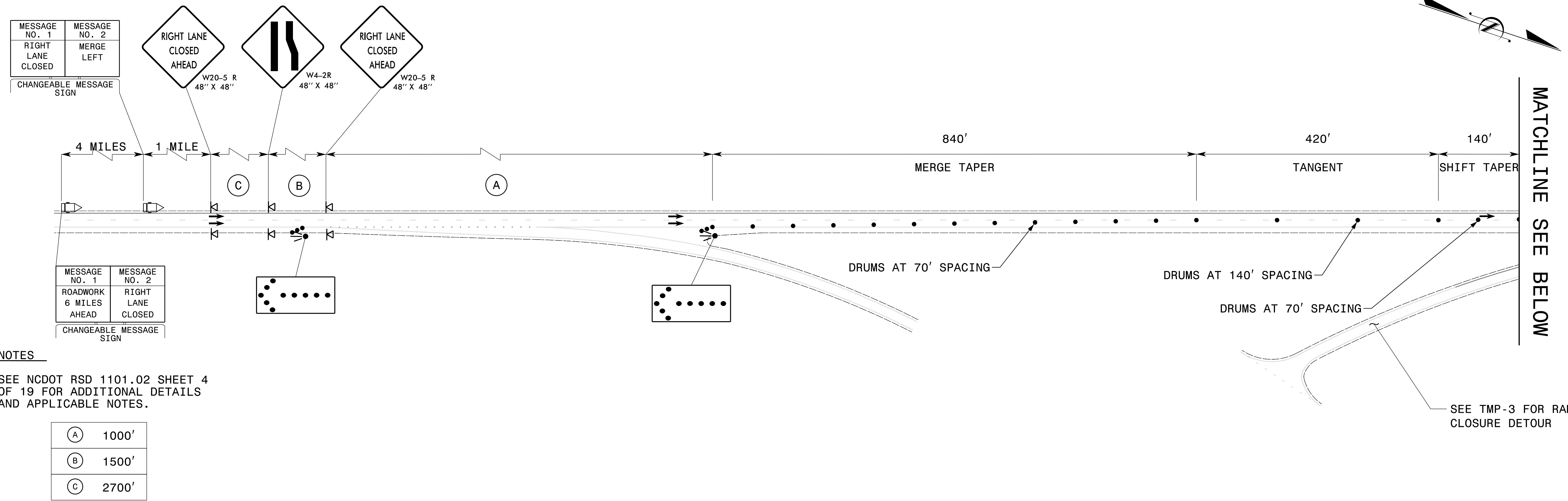
DIVISION OF HIGHWAYS  
NORTH CAROLINA  
DEPARTMENT OF TRANSPORTATION  
WORK ZONE TRAFFIC CONTROL

**CHATHAM 7  
ON US 1 SOUTH  
LANE CLOSURES**

**DOCUMENT NOT CONSIDERED FINAL  
UNLESS ALL SIGNATURES COMPLETED**



**- US 1 NORTHBOUND -  
PHASE 1**

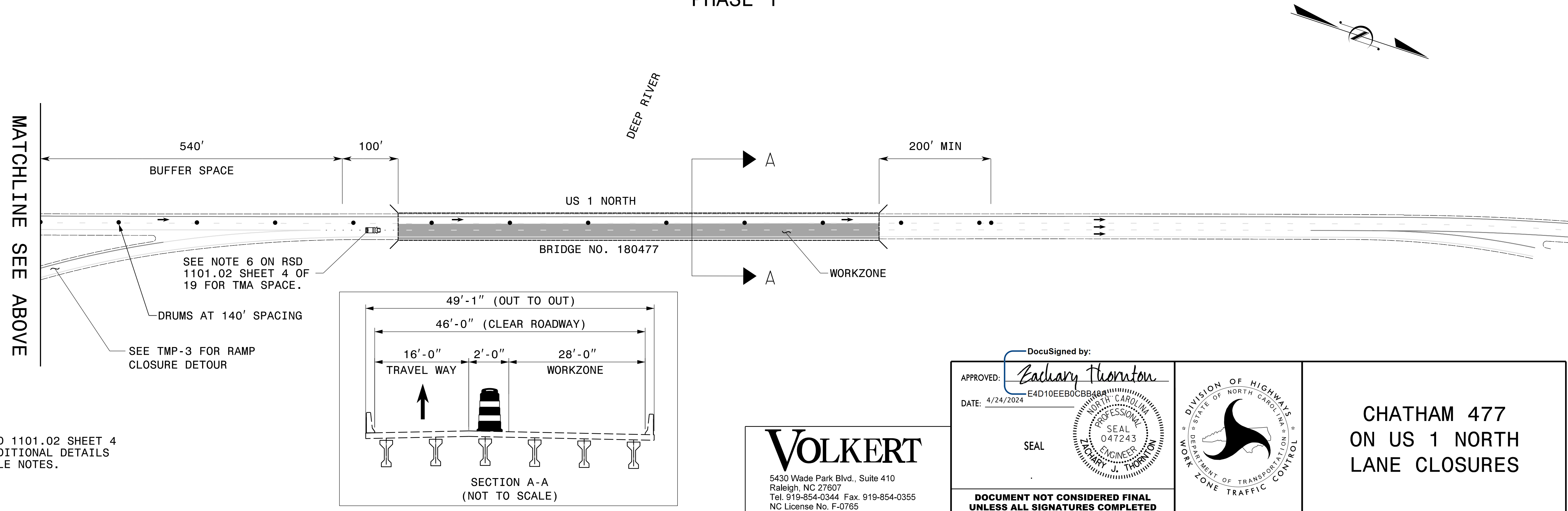


**NOTES**

SEE NCDOT RSD 1101.02 SHEET 4 OF 19 FOR ADDITIONAL DETAILS AND APPLICABLE NOTES.

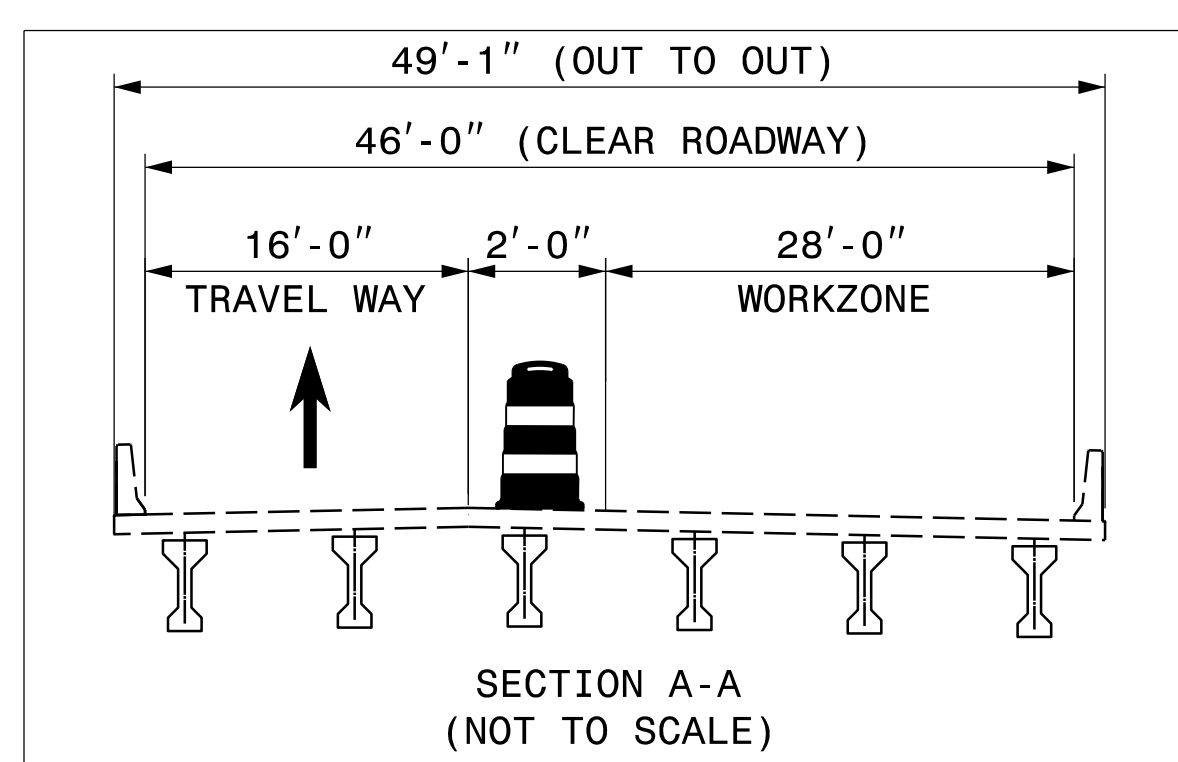
(A)	1000'
(B)	1500'
(C)	2700'

**- US 1 NORTHBOUND -  
PHASE 1**



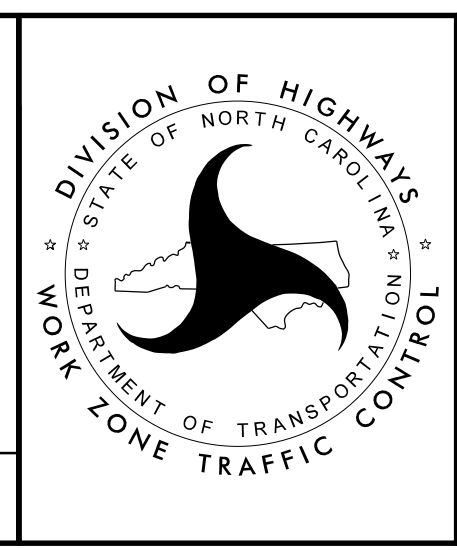
**NOTES**

SEE NCDOT RSD 1101.02 SHEET 4 OF 19 FOR ADDITIONAL DETAILS AND APPLICABLE NOTES.



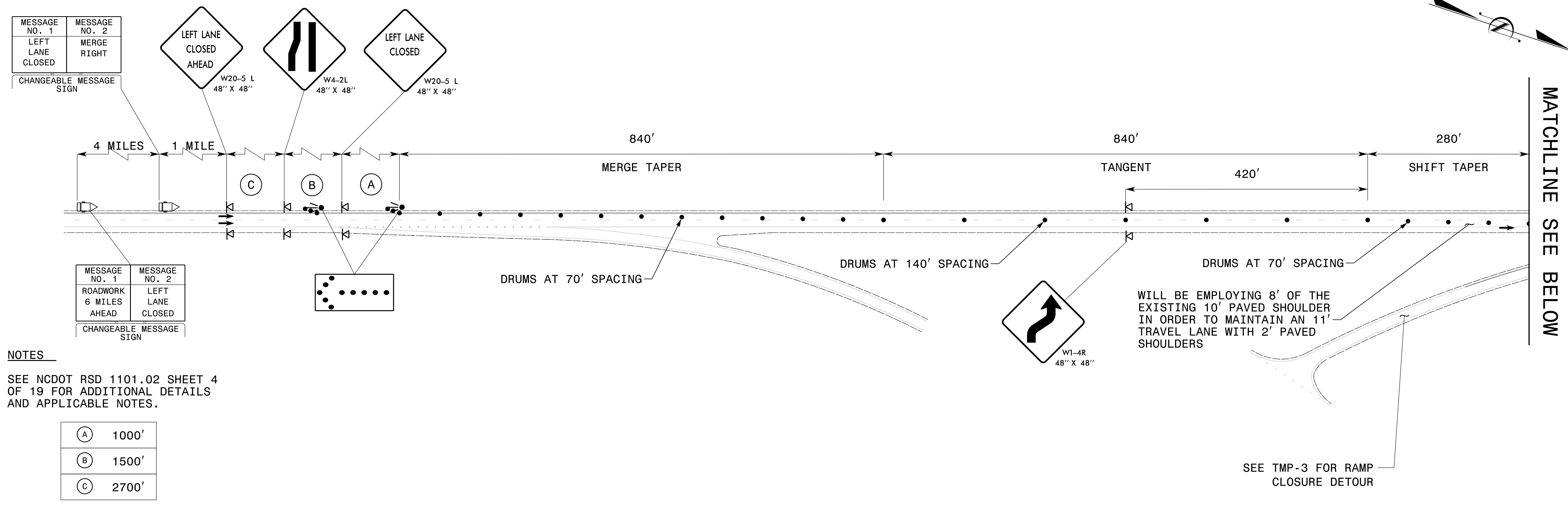
**VOLKERT**  
5430 Wade Park Blvd., Suite 410  
Raleigh, NC 27607  
Tel. 919-854-0344 Fax. 919-854-0355  
NC License No. F-0765

DocuSigned by:  
*Bachary Thornton*  
APPROVED: *Bachary Thornton*  
DATE: 4/24/2024  
E4D10EEB0CBB8A  
SEAL



**CHATHAM 477  
ON US 1 NORTH  
LANE CLOSURES**

**- US 1 NORTHBOUND -  
PHASE 2**



MESSAGE NO. 1	MESSAGE NO. 2
LEFT LANE CLOSED	MERGE RIGHT

CHANGEABLE MESSAGE SIGN

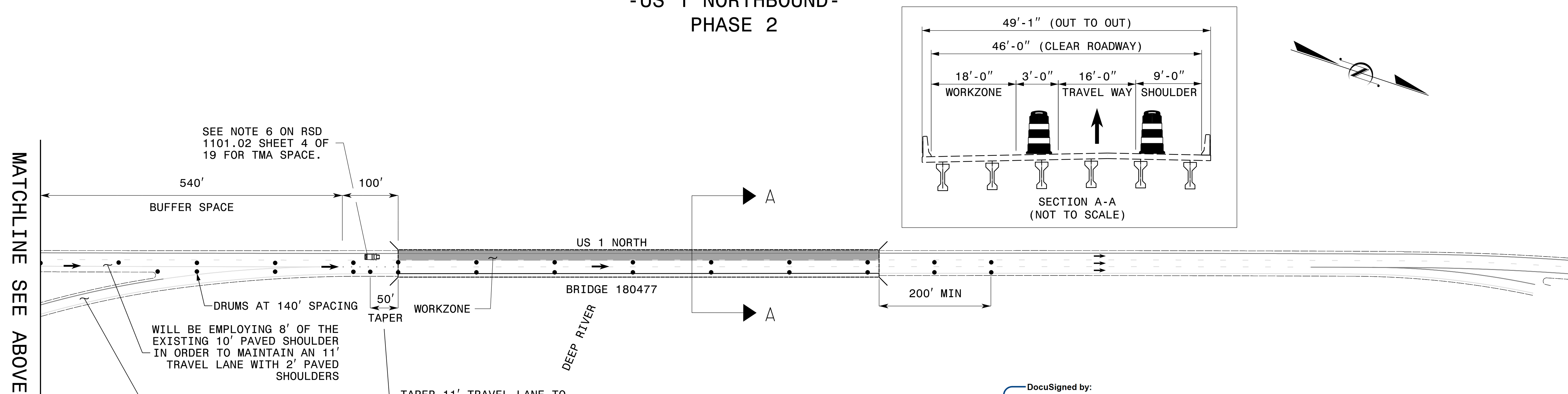
MESSAGE NO. 1	MESSAGE NO. 2
ROADWORK 6 MILES AHEAD	LEFT LANE CLOSED

**NOTES**

SEE NCDOT RSD 1101.02 SHEET 4 OF 19 FOR ADDITIONAL DETAILS AND APPLICABLE NOTES.

(A)	1000'
(B)	1500'
(C)	2700'

**- US 1 NORTHBOUND -  
PHASE 2**



**NOTES**

SEE NCDOT RSD 1101.02 SHEET 4 OF 19 FOR ADDITIONAL DETAILS AND APPLICABLE NOTES.

SEE TMP-3 FOR RAMP CLOSURE DETOUR

TAPER 11' TRAVEL LANE TO A 12' TAVEL LANE PRIOR TO TRAFFIC TRANSITIONING ONTO THE BRIDGE

**VOLKERT**  
5430 Wade Park Blvd., Suite 410  
Raleigh, NC 27607  
Tel. 919-854-0344 Fax. 919-854-0355  
NC License No. F-0765

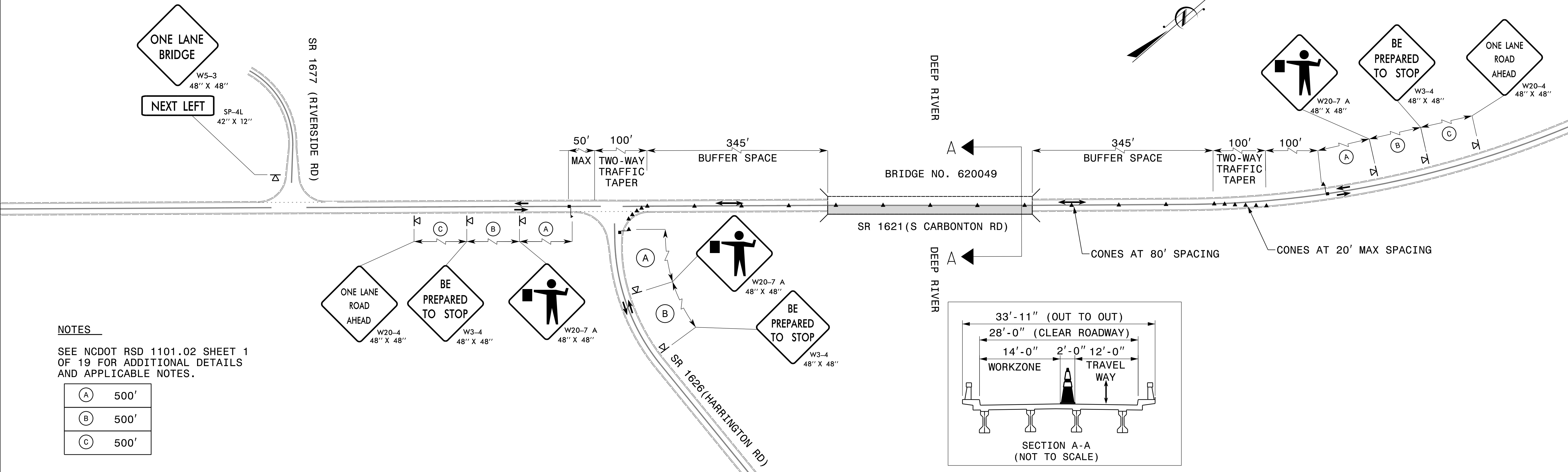
DocuSigned by:  
*Zachary J. Thornton*  
APPROVED: *Zachary J. Thornton*  
DATE: 4/24/2024  
SEAL  
NORTH CAROLINA PROFESSIONAL ENGINEER  
ZACHARY J. THORNTON  
047243



**CHATHAM 477  
ON US 1 NORTH  
LANE CLOSURES**

**DOCUMENT NOT CONSIDERED FINAL  
UNLESS ALL SIGNATURES COMPLETED**

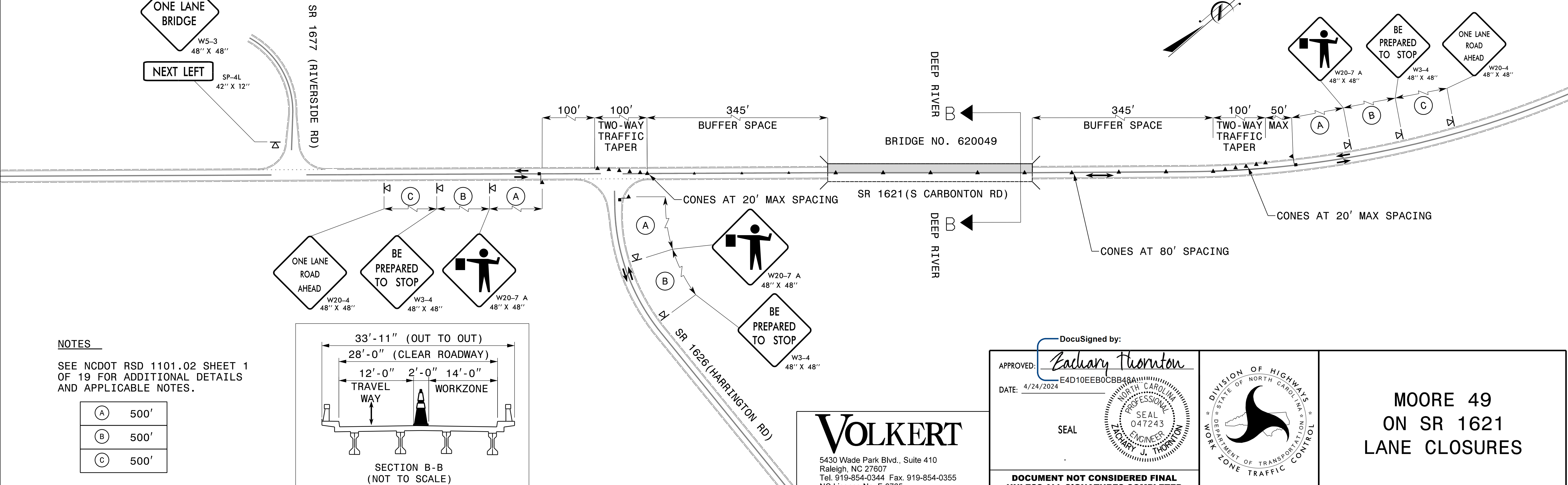
- PHASE 1 -



**NOTES**  
SEE NCDOT RSD 1101.02 SHEET 1 OF 19 FOR ADDITIONAL DETAILS AND APPLICABLE NOTES.

(A)	500'
(B)	500'
(C)	500'

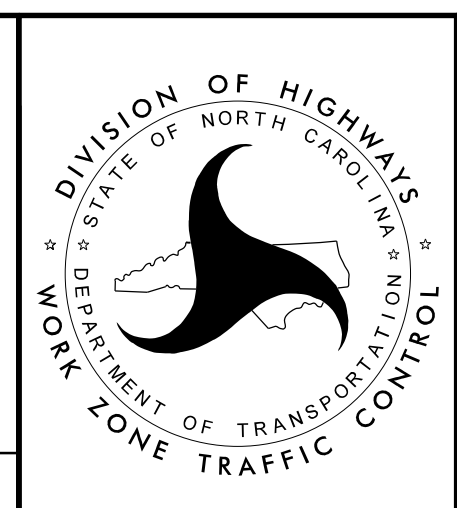
- PHASE 2 -



**NOTES**  
SEE NCDOT RSD 1101.02 SHEET 1 OF 19 FOR ADDITIONAL DETAILS AND APPLICABLE NOTES.

(A)	500'
(B)	500'
(C)	500'

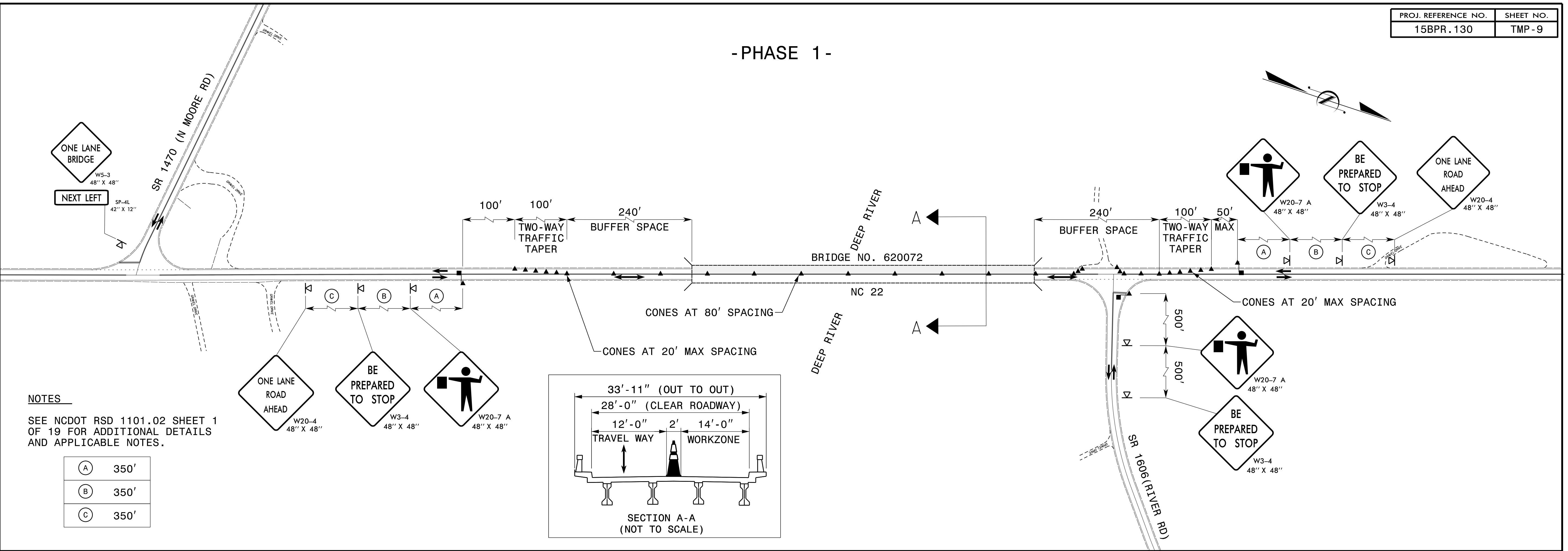
DocuSigned by:  
*Zachary Thornton*  
APPROVED: [Signature]  
DATE: 4/24/2024  
E4D10EEB0CBB4A  
SEAL



**MOORE 49  
ON SR 1621  
LANE CLOSURES**

**VOLKERT**  
5430 Wade Park Blvd., Suite 410  
Raleigh, NC 27607  
Tel. 919-854-0344 Fax. 919-854-0355  
NC License No. F-0765

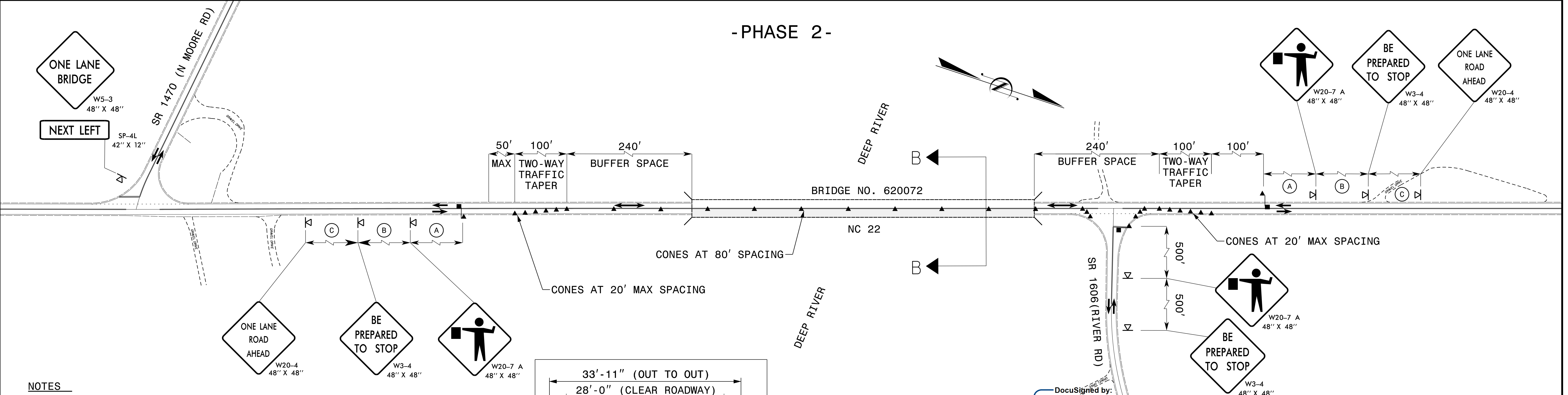
- PHASE 1 -



**NOTES**  
SEE NCDOT RSD 1101.02 SHEET 1 OF 19 FOR ADDITIONAL DETAILS AND APPLICABLE NOTES.

(A)	350'
(B)	350'
(C)	350'

- PHASE 2 -



**NOTES**  
SEE NCDOT RSD 1101.02 SHEET 1 OF 19 FOR ADDITIONAL DETAILS AND APPLICABLE NOTES.

(A)	350'
(B)	350'
(C)	350'

**VOLKERT**  
5430 Wade Park Blvd., Suite 410  
Raleigh, NC 27607  
Tel. 919-854-0344 Fax. 919-854-0355  
NC License No. F-0765

APPROVED: *Eadary Thornton*  
DATE: 4/24/2024  
SEAL  
E4D10EEB0CBB48A  
NORTH CAROLINA  
PROFESSIONAL ENGINEER  
SEAL 047243  
TACHERY J. THORNTON

DIVISION OF HIGHWAYS  
STATE OF NORTH CAROLINA  
DEPARTMENT OF TRANSPORTATION  
WORK ZONE TRAFFIC CONTROL

**MOORE 72  
ON NC 22  
LANE CLOSURES**

**DOCUMENT NOT CONSIDERED FINAL  
UNLESS ALL SIGNATURES COMPLETED**