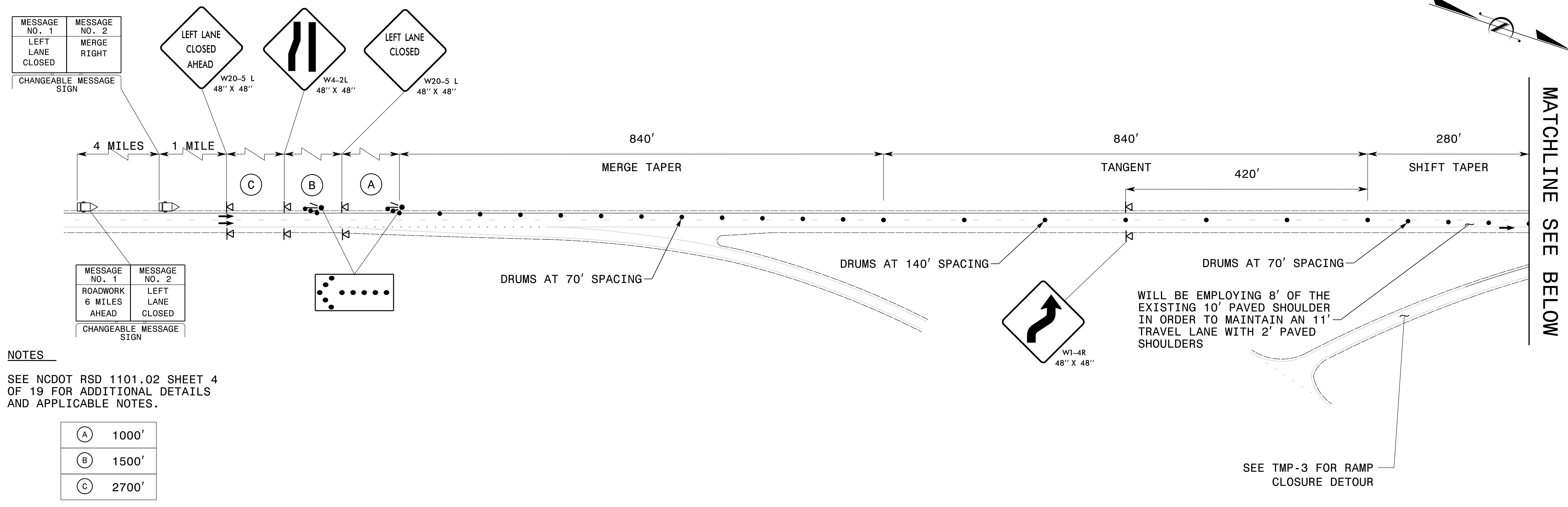


**- US 1 NORTHBOUND -
PHASE 2**



MESSAGE NO. 1 LEFT LANE CLOSED	MESSAGE NO. 2 MERGE RIGHT
-----------------------------------	------------------------------

CHANGEABLE MESSAGE SIGN

MESSAGE NO. 1 ROADWORK 6 MILES AHEAD	MESSAGE NO. 2 LEFT LANE CLOSED
---	-----------------------------------

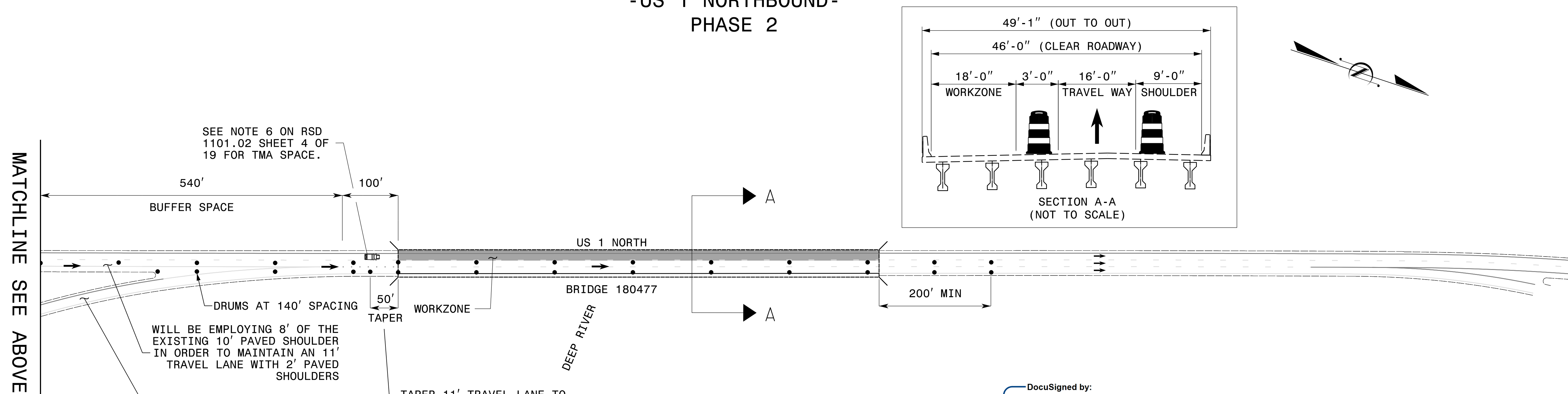
CHANGEABLE MESSAGE SIGN

NOTES

SEE NCDOT RSD 1101.02 SHEET 4 OF 19 FOR ADDITIONAL DETAILS AND APPLICABLE NOTES.

(A)	1000'
(B)	1500'
(C)	2700'

**- US 1 NORTHBOUND -
PHASE 2**



NOTES

SEE NCDOT RSD 1101.02 SHEET 4 OF 19 FOR ADDITIONAL DETAILS AND APPLICABLE NOTES.

SEE TMP-3 FOR RAMP CLOSURE DETOUR

TAPER 11' TRAVEL LANE TO A 12' TAVEL LANE PRIOR TO TRAFFIC TRANSITIONING ONTO THE BRIDGE

VOLKERT
5430 Wade Park Blvd., Suite 410
Raleigh, NC 27607
Tel. 919-854-0344 Fax. 919-854-0355
NC License No. F-0765

DocuSigned by:
Zachary J. Thornton
APPROVED: *Zachary J. Thornton*
DATE: 4/24/2024
SEAL
NORTH CAROLINA PROFESSIONAL ENGINEER
ZACHARY J. THORNTON
047243



**CHATHAM 477
ON US 1 NORTH
LANE CLOSURES**

**DOCUMENT NOT CONSIDERED FINAL
UNLESS ALL SIGNATURES COMPLETED**