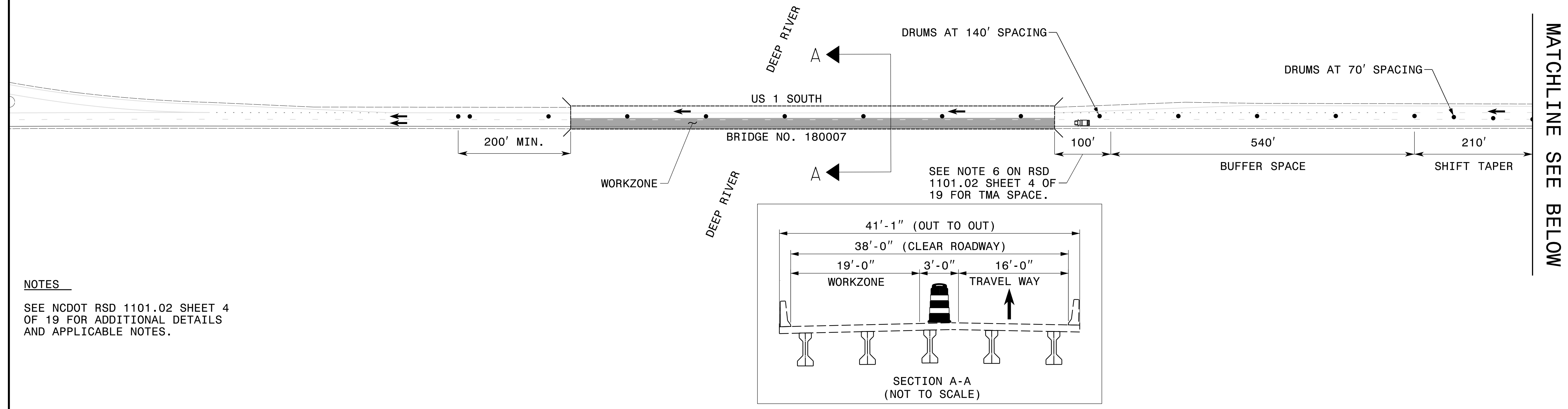


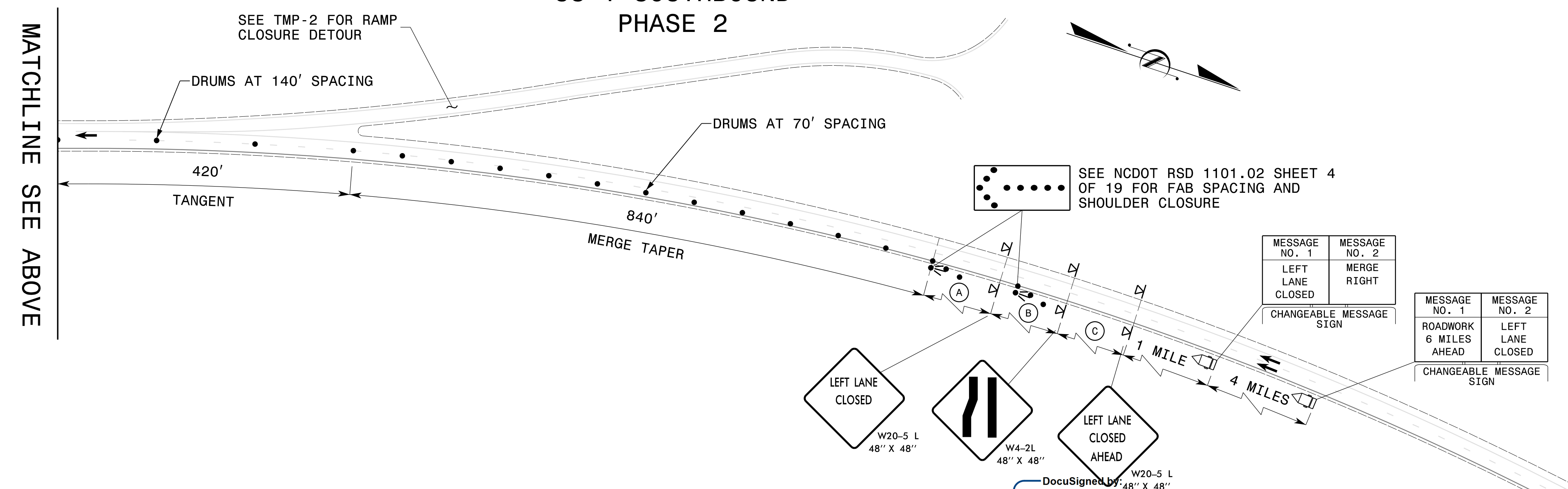
**-US 1 SOUTHBOUND-  
PHASE 2**



MATCHLINE SEE BELOW

**NOTES**  
SEE NCDOT RSD 1101.02 SHEET 4 OF 19 FOR ADDITIONAL DETAILS AND APPLICABLE NOTES.

**-US 1 SOUTHBOUND-  
PHASE 2**



MATCHLINE SEE ABOVE

**NOTES**  
SEE NCDOT RSD 1101.02 SHEET 4 OF 19 FOR ADDITIONAL DETAILS AND APPLICABLE NOTES.

(A)	1000'
(B)	1500'
(C)	2700'

**VOLKERT**  
5430 Wade Park Blvd., Suite 410  
Raleigh, NC 27607  
Tel. 919-854-0344 Fax. 919-854-0355  
NC License No. F-0765

APPROVED: *Barthory Thornton*  
DATE: 4/24/2024  
E4D10EEB0CBB48A  
SEAL  
NORTH CAROLINA PROFESSIONAL ENGINEER SEAL 047243  
BARTHORY J. THORNTON

DIVISION OF HIGHWAYS  
NORTH CAROLINA  
DEPARTMENT OF TRANSPORTATION  
WORK ZONE TRAFFIC CONTROL

**CHATHAM 7  
ON US 1 SOUTH  
LANE CLOSURES**

**DOCUMENT NOT CONSIDERED FINAL  
UNLESS ALL SIGNATURES COMPLETED**