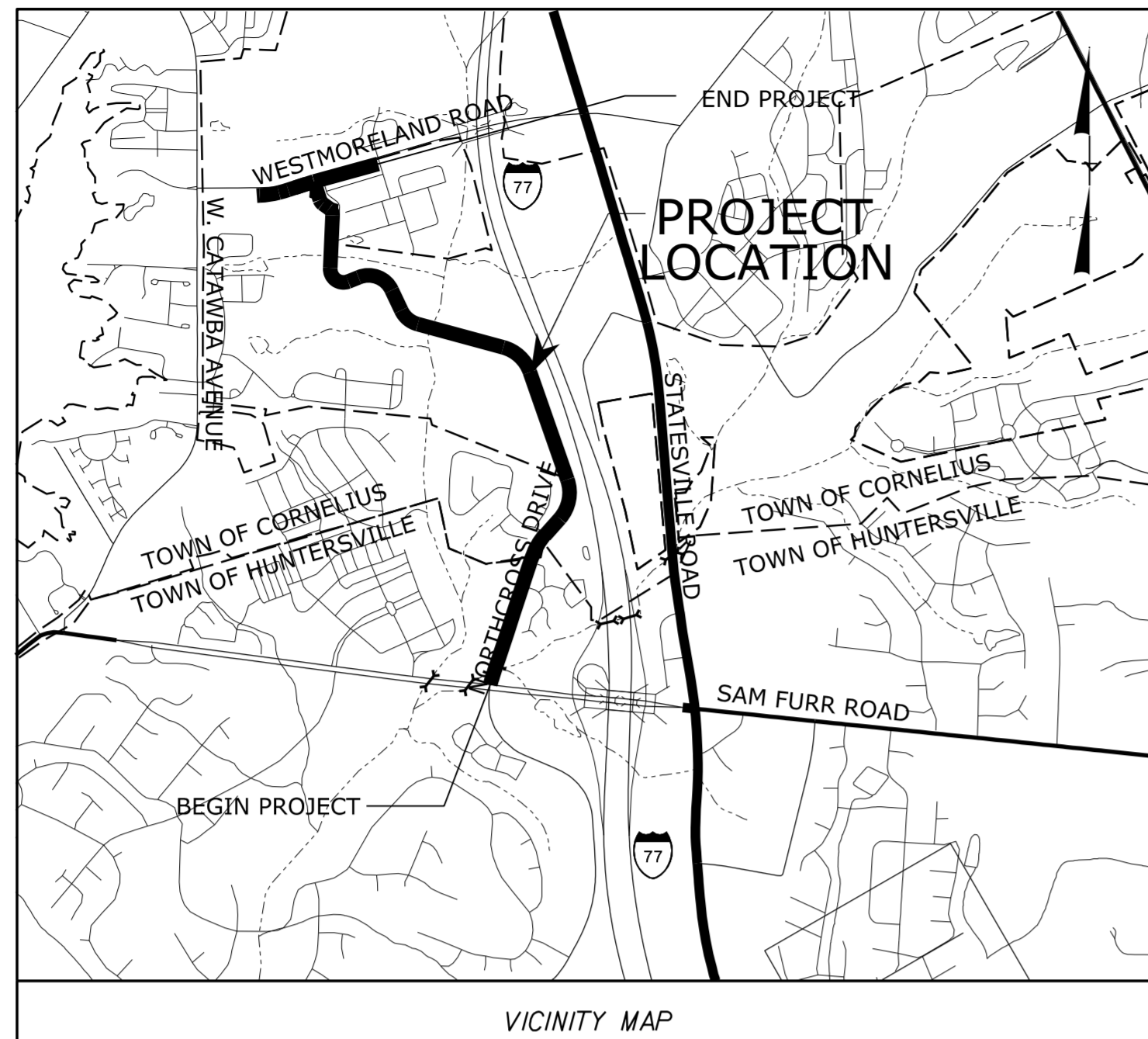


TIP PROJECT: U-5108



VICINITY MAP

STATE OF NORTH CAROLINA
DIVISION OF HIGHWAYS

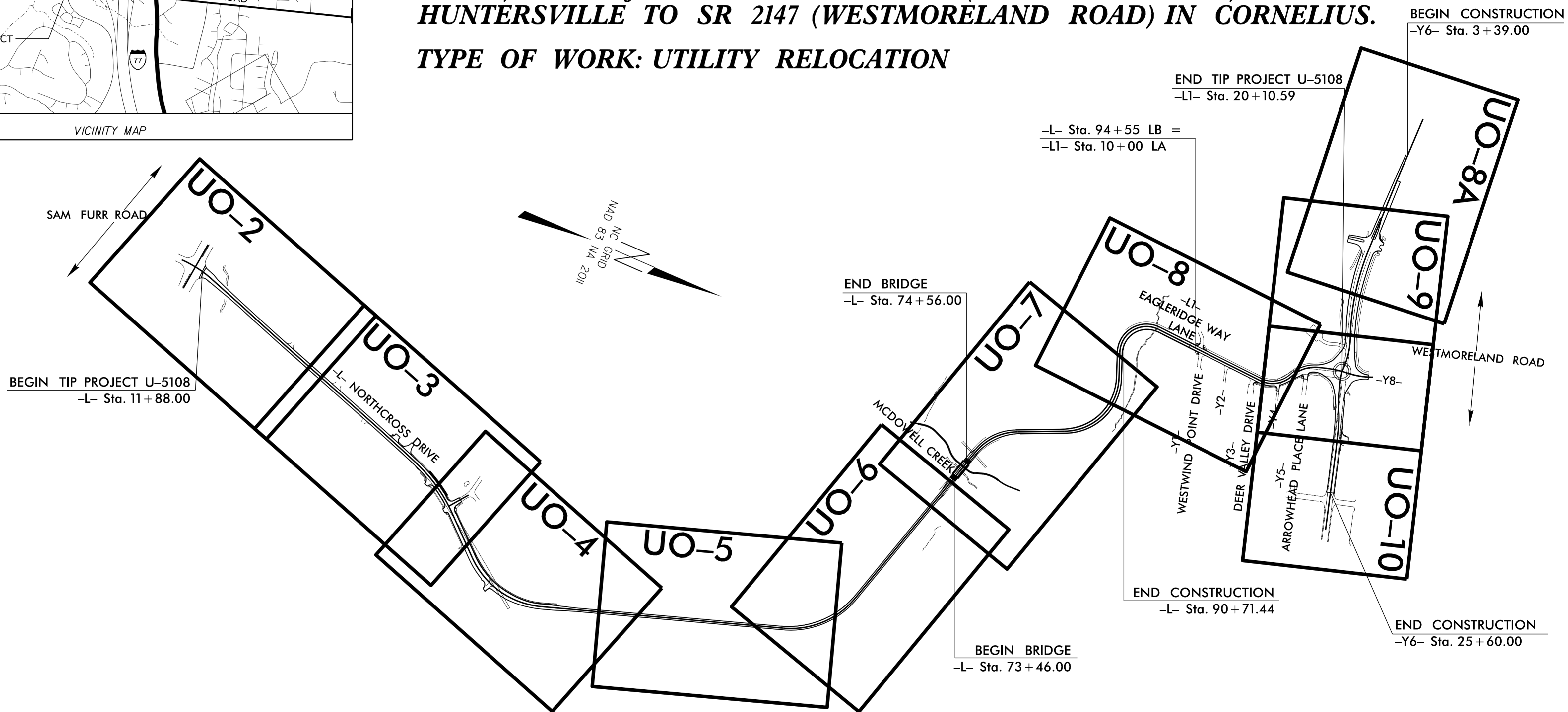
**UTILITIES BY OTHERS PLANS
MECKLENBURG COUNTY**

LOCATION: NORTHCROSS DRIVE EXTENSION PROJECT - SR 2316 (NORTHCROSS DRIVE) FROM JUST NORTH OF NC 73 (SAM FURR ROAD) IN HUNTERSVILLE TO SR 2147 (WESTMORELAND ROAD) IN CORNELIUS.

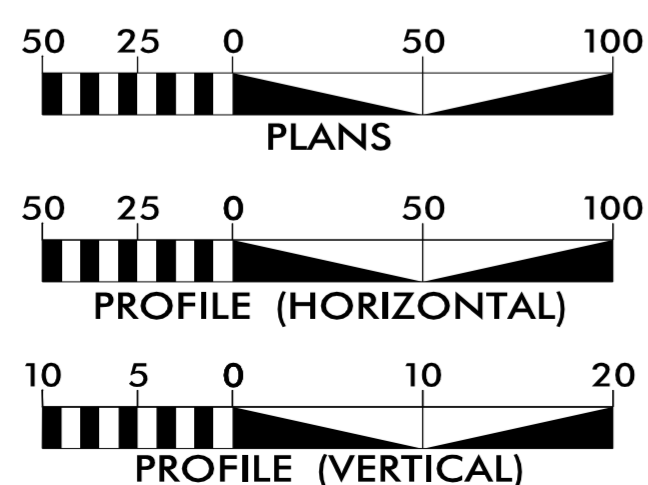
TYPE OF WORK: UTILITY RELOCATION

T.I.P. NO.	SHEET NO.
U-5108	UO-1

NOTE:
ALL UTILITY WORK SHOWN ON THIS SHEET IS DONE BY OTHERS.
NO PAYMENT WILL BE MADE TO THE CONTRACTOR FOR UTILITY WORK SHOWN ON THIS SHEET.



GRAPHIC SCALES



INDEX OF SHEETS

SHEET NO.:	DESCRIPTION:
UO-1	TITLE SHEET
UO-2 THRU UO-10	UBO PLAN SHEETS

UTILITY OWNERS WITH CONFLICTS

- (A) POWER (TRANSMISSION) - ENERGY UNITED
- (B) POWER (DISTRIBUTION) - ENERGY UNITED
- (C) GAS - PIEDMONT NATURAL GAS
- (D) CATV - CHARTER/SPECTRUM
- (E) COMM. - AT&T
- (F) COMM. - SEGRA
- (G) COMM. - TDS TELECOM
- (H) COMM. - VERIZON

CH ENGINEERING
DIVISION OF PENNONI
5430 WADE PARK BLVD., SUITE 106,
RALEIGH, NC 27607 PHONE: 919.929.1173
FAX: 919.493.6548 NC LICENSE #P-0189

UTILITIES PROJECT COODINATOR
WAYNE WILEY

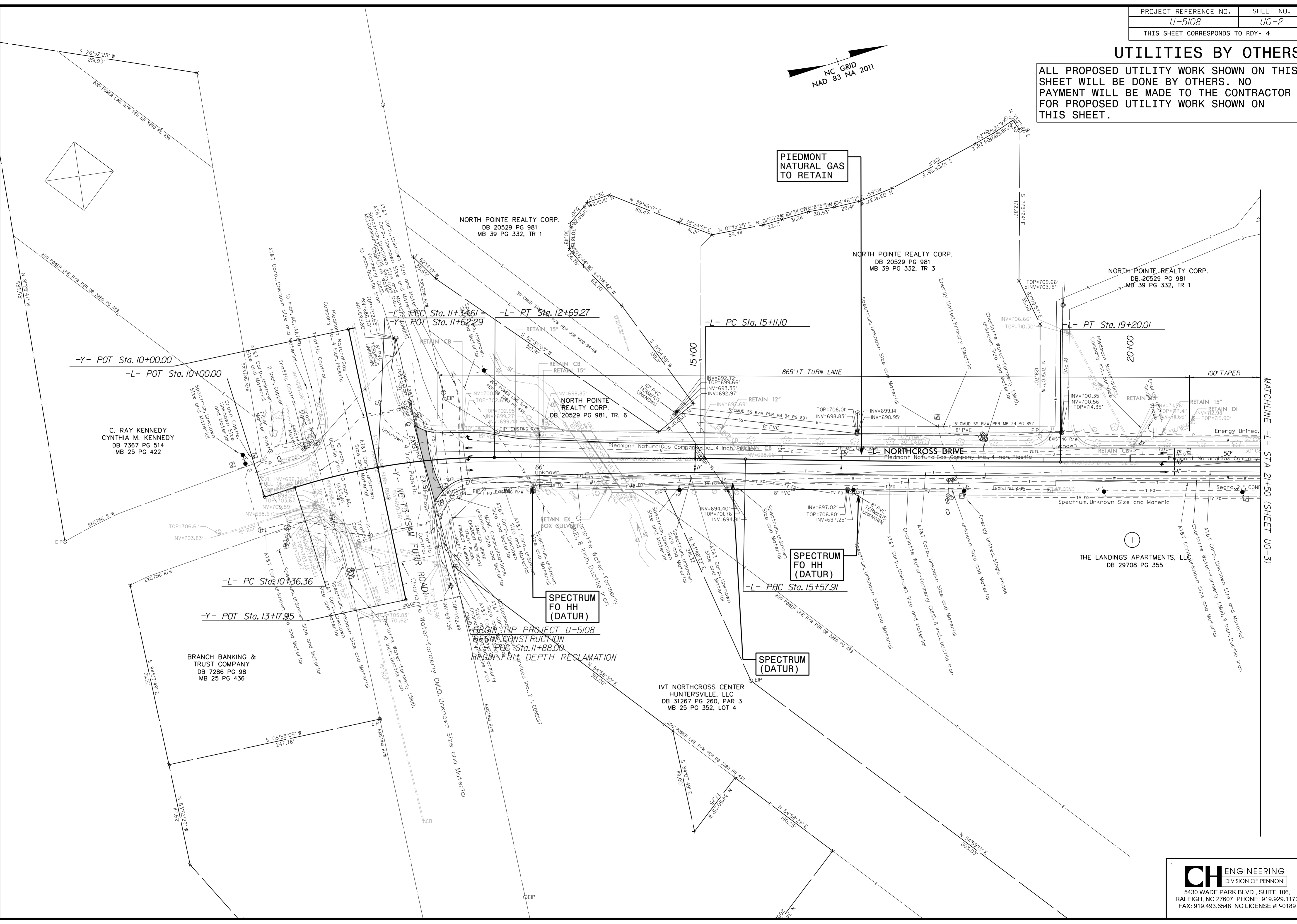
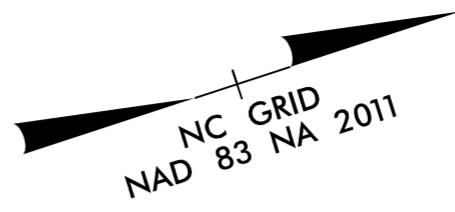


DIVISION OF HIGHWAYS
DIVISION 10
716 W. MAIN ST
ALBEMARLE NC 28001
PHONE (704) 983-4400
FAX (704) 982-3146

TRAVIS PRESLAR, PE DIVISION PROJECT TEAM LEAD
LYNN BASINGER DIVISION UTILITY ENGINEER
ADAM PRESLAR SR. DIV. UTILITY COORDINATOR
BARRY CARLTON DIVISION UTILITY COORDINATOR

UTILITIES BY OTHERS

ALL PROPOSED UTILITY WORK SHOWN ON THIS SHEET WILL BE DONE BY OTHERS. NO PAYMENT WILL BE MADE TO THE CONTRACTOR FOR PROPOSED UTILITY WORK SHOWN ON THIS SHEET.



-Y- POT Sta. 10+00.00
-L- POT Sta. 10+00.00

C. RAY KENNEDY
CYNTHIA M. KENNEDY
DB 7367 PG 514
MB 25 PG 422

-L- PC Sta. 10+36.36
-Y- POT Sta. 13+17.95

BRANCH BANKING &
TRUST COMPANY
DB 7286 PG 98
MB 25 PG 436

NORTH POINTE REALTY CORP.
DB 20529 PG 981
MB 39 PG 332, TR 1

NORTH POINTE REALTY CORP.
DB 20529 PG 981, TR. 6

PIEDMONT
NATURAL GAS
TO RETAIN

NORTH POINTE REALTY CORP.
DB 20529 PG 981
MB 39 PG 332, TR 3

NORTH POINTE REALTY CORP.
DB 20529 PG 981
MB 39 PG 332, TR 1

SPECTRUM
FO HH
(DATUR)

SPECTRUM
FO HH
(DATUR)

SPECTRUM
(DATUR)

THE LANDINGS APARTMENTS, LLC
DB 29708 PG 355

IVT NORTHCROSS CENTER
HUNTERSVILLE, LLC
DB 31267 PG 260, PAR 3
MB 25 PG 352, LOT 4

BEGIN TAP PROJECT U-5108
BEGIN CONSTRUCTION
BEGIN FULL DEPTH RECLAMATION

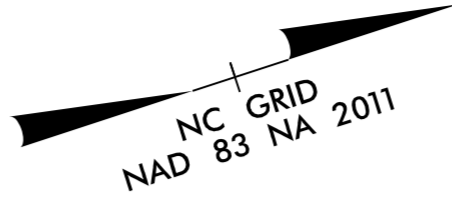
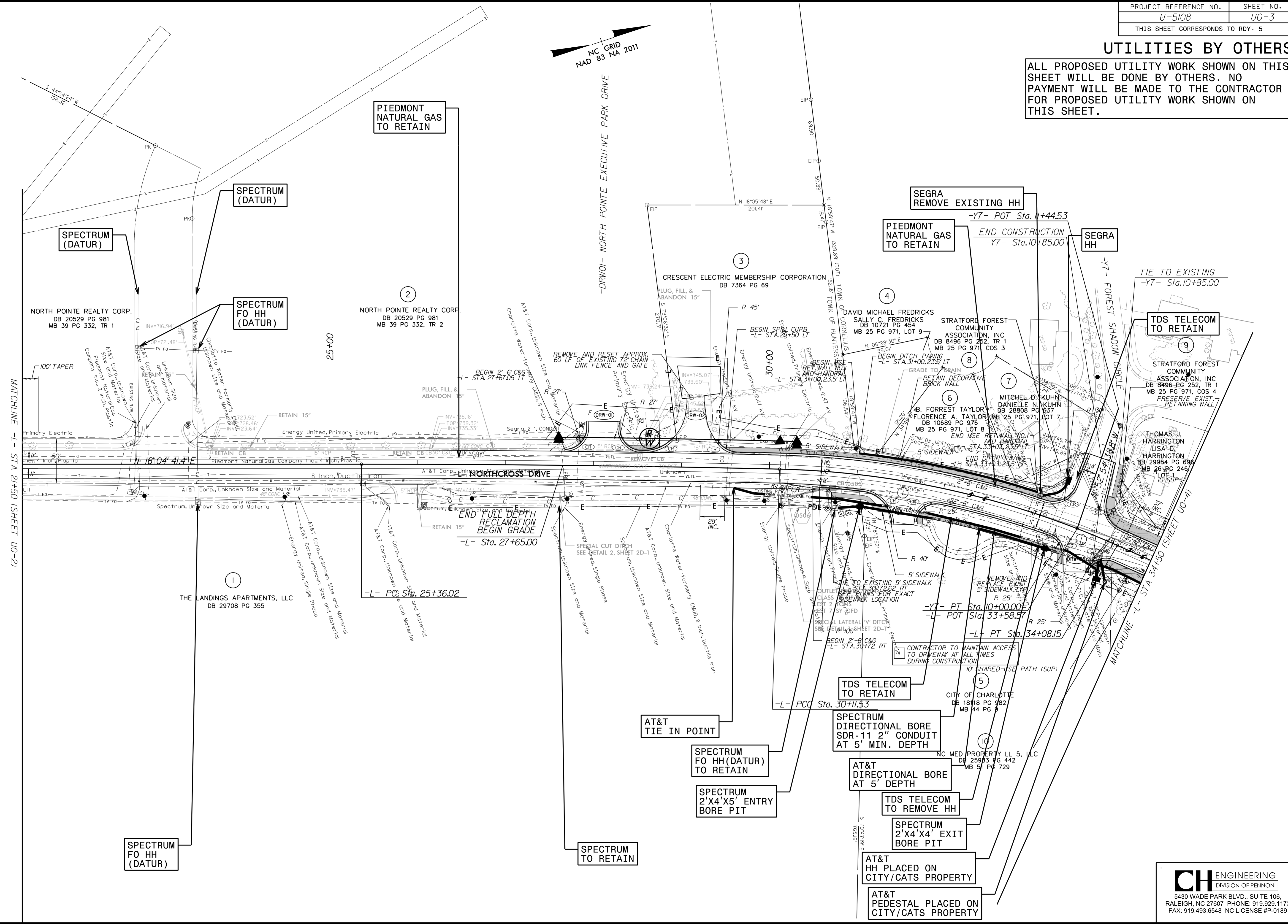
MATCHLINE - STA 21+50 (SHEET UO-3)

8/17/99

2/5/2024
N:\SERVICES\Engineering\UBO\ProJ\U5108-ut.l.rdy4-U002.psh.dgn

UTILITIES BY OTHERS

ALL PROPOSED UTILITY WORK SHOWN ON THIS SHEET WILL BE DONE BY OTHERS. NO PAYMENT WILL BE MADE TO THE CONTRACTOR FOR PROPOSED UTILITY WORK SHOWN ON THIS SHEET.



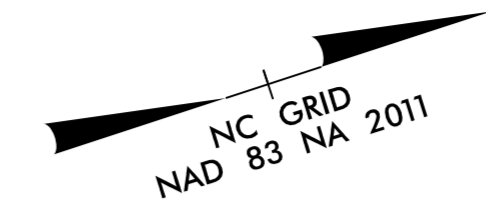
MATCHLINE -L- STA 21+50 (SHEET UO-2)

MATCHLINE -L- STA 34+50 (SHEET UO-4)

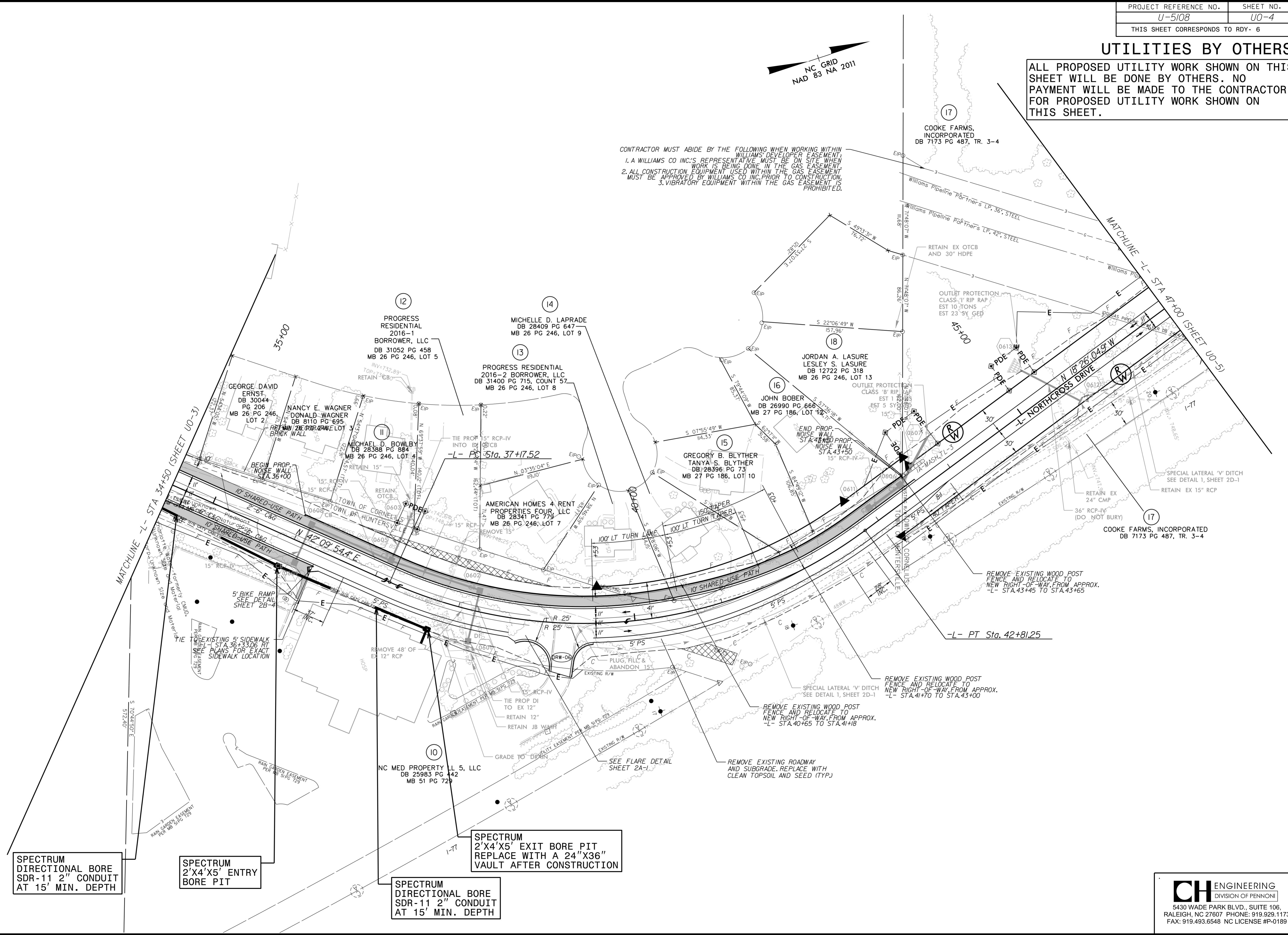
3/5/2024 U001P001U0108_u.t_rdy5_U003_psh.dgn

UTILITIES BY OTHERS

ALL PROPOSED UTILITY WORK SHOWN ON THIS SHEET WILL BE DONE BY OTHERS. NO PAYMENT WILL BE MADE TO THE CONTRACTOR FOR PROPOSED UTILITY WORK SHOWN ON THIS SHEET.



CONTRACTOR MUST ABIDE BY THE FOLLOWING WHEN WORKING WITHIN WILLIAMS DEVELOPER EASEMENT:
 1. A WILLIAMS CO INC'S REPRESENTATIVE MUST BE ON SITE WHEN WORK IS BEING DONE IN THE GAS EASEMENT.
 2. ALL CONSTRUCTION EQUIPMENT USED WITHIN THE GAS EASEMENT MUST BE APPROVED BY WILLIAMS CO INC. PRIOR TO CONSTRUCTION.
 3. VIBRATORY EQUIPMENT WITHIN THE GAS EASEMENT IS PROHIBITED.



SPECTRUM DIRECTIONAL BORE SDR-11 2" CONDUIT AT 15' MIN. DEPTH

SPECTRUM 2'X4'X5' ENTRY BORE PIT

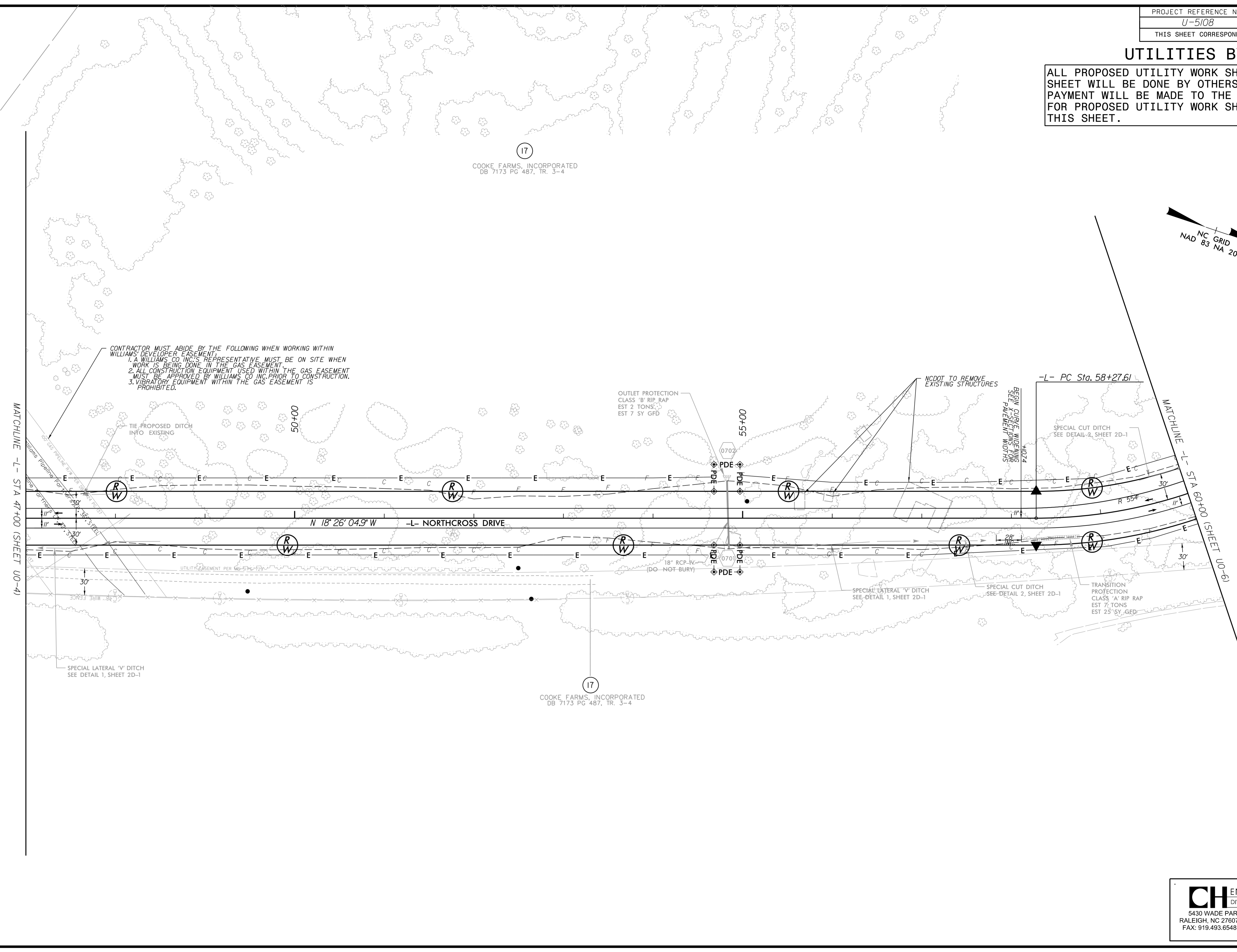
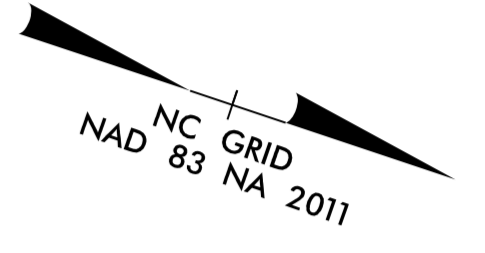
SPECTRUM DIRECTIONAL BORE SDR-11 2" CONDUIT AT 15' MIN. DEPTH

SPECTRUM 2'X4'X5' EXIT BORE PIT REPLACE WITH A 24"X36" VAULT AFTER CONSTRUCTION

8/17/99
 8/5/2024
 C:\Users\james\OneDrive\Engineering\UBO\ProJ\U5108-ut.l_rdy6_U004_psh.dgn

UTILITIES BY OTHERS

ALL PROPOSED UTILITY WORK SHOWN ON THIS SHEET WILL BE DONE BY OTHERS. NO PAYMENT WILL BE MADE TO THE CONTRACTOR FOR PROPOSED UTILITY WORK SHOWN ON THIS SHEET.



17
COOKE FARMS, INCORPORATED
DB 7173 PG 487, TR. 3-4

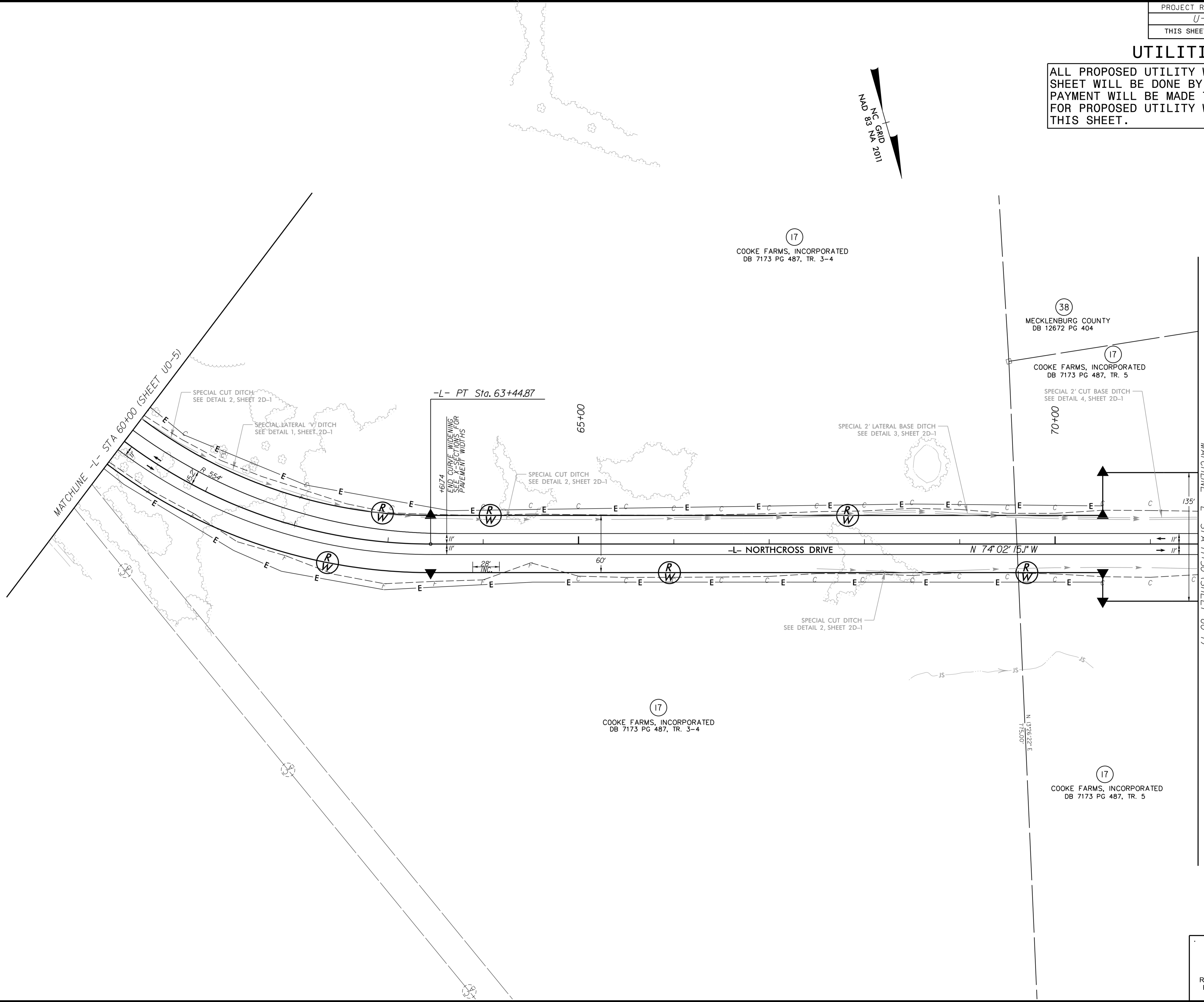
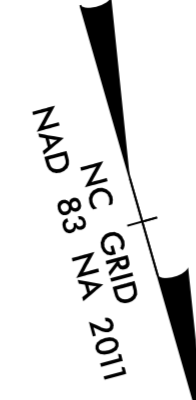
17
COOKE FARMS, INCORPORATED
DB 7173 PG 487, TR. 3-4

8/17/99

2/5/2024
R:\ENGINEERING\UB0\PROJ\U5108.ut.rdy7_U005.psh.dgn

UTILITIES BY OTHERS

ALL PROPOSED UTILITY WORK SHOWN ON THIS SHEET WILL BE DONE BY OTHERS. NO PAYMENT WILL BE MADE TO THE CONTRACTOR FOR PROPOSED UTILITY WORK SHOWN ON THIS SHEET.



8/17/99

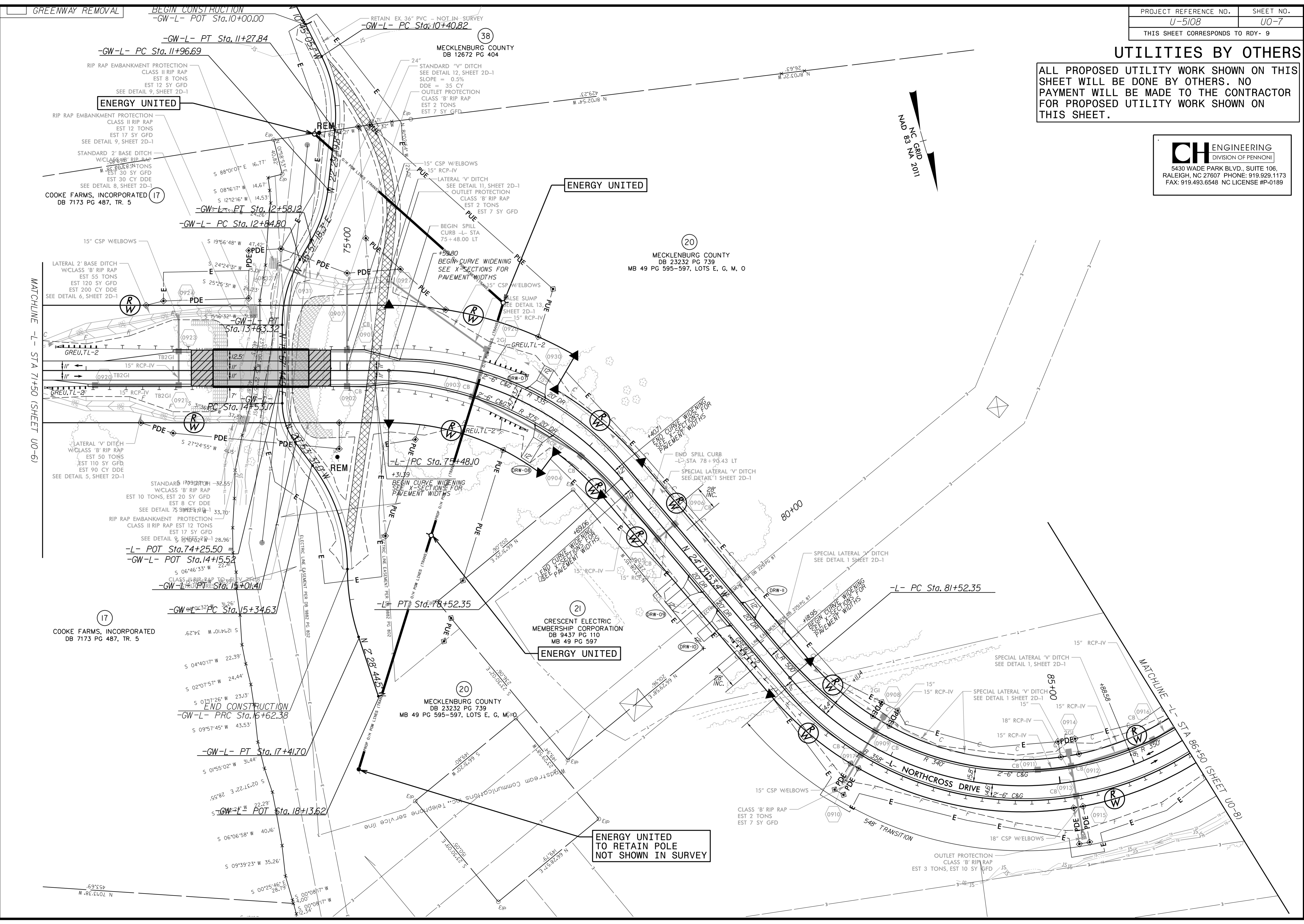
R:\5\2024\PROJECTS\Engineering\UB0\Proj\U5108-ut-rdy8-U006.psh.dgn

UTILITIES BY OTHERS

ALL PROPOSED UTILITY WORK SHOWN ON THIS SHEET WILL BE DONE BY OTHERS. NO PAYMENT WILL BE MADE TO THE CONTRACTOR FOR PROPOSED UTILITY WORK SHOWN ON THIS SHEET.

CH ENGINEERING
DIVISION OF PENNONI

5430 WADE PARK BLVD., SUITE 106,
RALEIGH, NC 27607 PHONE: 919.929.1173
FAX: 919.493.6548 NC LICENSE #P-0189



ENERGY UNITED

ENERGY UNITED

ENERGY UNITED

ENERGY UNITED TO RETAIN POLE NOT SHOWN IN SURVEY

MATCHLINE -L- STA 71+50 (SHEET U0-6)

MATCHLINE -L- STA 86+50 (SHEET U0-8)

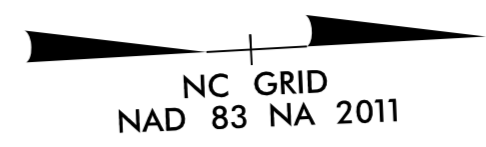
8/17/99
2/5/2024
N:\SERVICES\Engineering\UBO\ProJ\U5108\rdy\U007.psh.dgn

UTILITIES BY OTHERS

ALL PROPOSED UTILITY WORK SHOWN ON THIS SHEET WILL BE DONE BY OTHERS. NO PAYMENT WILL BE MADE TO THE CONTRACTOR FOR PROPOSED UTILITY WORK SHOWN ON THIS SHEET.

CH ENGINEERING
DIVISION OF PENNONTI

5430 WADE PARK BLVD., SUITE 106,
RALEIGH, NC 27607 PHONE: 919.929.1173
FAX: 919.493.6548 NC LICENSE #P-0189



20
MECKLENBURG COUNTY
DB 23232 PG 739
MB 49 PG 595-597, LOTS E, G, M, O

222
TOWN OF CORNELIUS
DB 26414 PG 346
MB 47 PG 641, TR. 2

PIEDMONT
NATURAL GAS
TO RELOCATE
AROUND PROPOSED
STORM STRUCTURE

26
ALEXANDER CHASE
HOMEOWNERS
ASSOCIATION, INC.
DB 17224 PG 59, TR. 1
MB 38 PG 667, PARK 1

23
ALEXANDER CHASE
HOMEOWNERS
ASSOCIATION, INC.
DB 26009 PG 35
MB 46 PG 955, COS "J"

ALEXANDER CHASE
HOMEOWNERS
ASSOCIATION, INC.
DB 19484 PG 158
MB 44 PG 121, COS 2

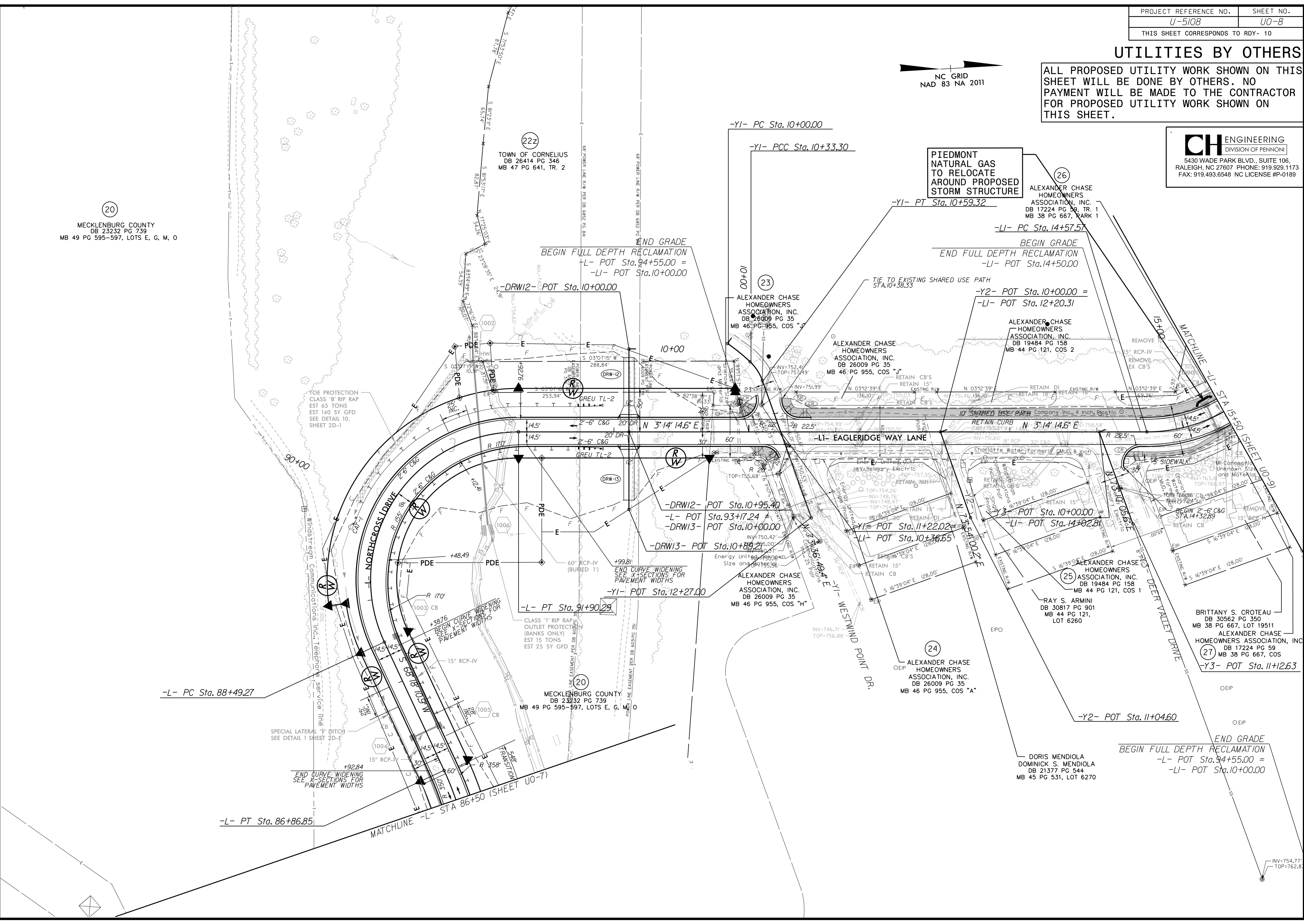
25
ALEXANDER CHASE
HOMEOWNERS
ASSOCIATION, INC.
DB 19484 PG 158
MB 44 PG 121, COS 1

24
ALEXANDER CHASE
HOMEOWNERS
ASSOCIATION, INC.
DB 26009 PG 35
MB 46 PG 955, COS "A"

BRITTANY S. CROTEAU
DB 30562 PG 350
MB 38 PG 667, LOT 19511
ALEXANDER CHASE
HOMEOWNERS ASSOCIATION, INC.
DB 17224 PG 59
MB 38 PG 667, COS
27
-Y3- POT Sta. 11+12.63

DORIS MENDIOLA
DOMINICK S. MENDIOLA
DB 21377 PG 544
MB 45 PG 531, LOT 6270

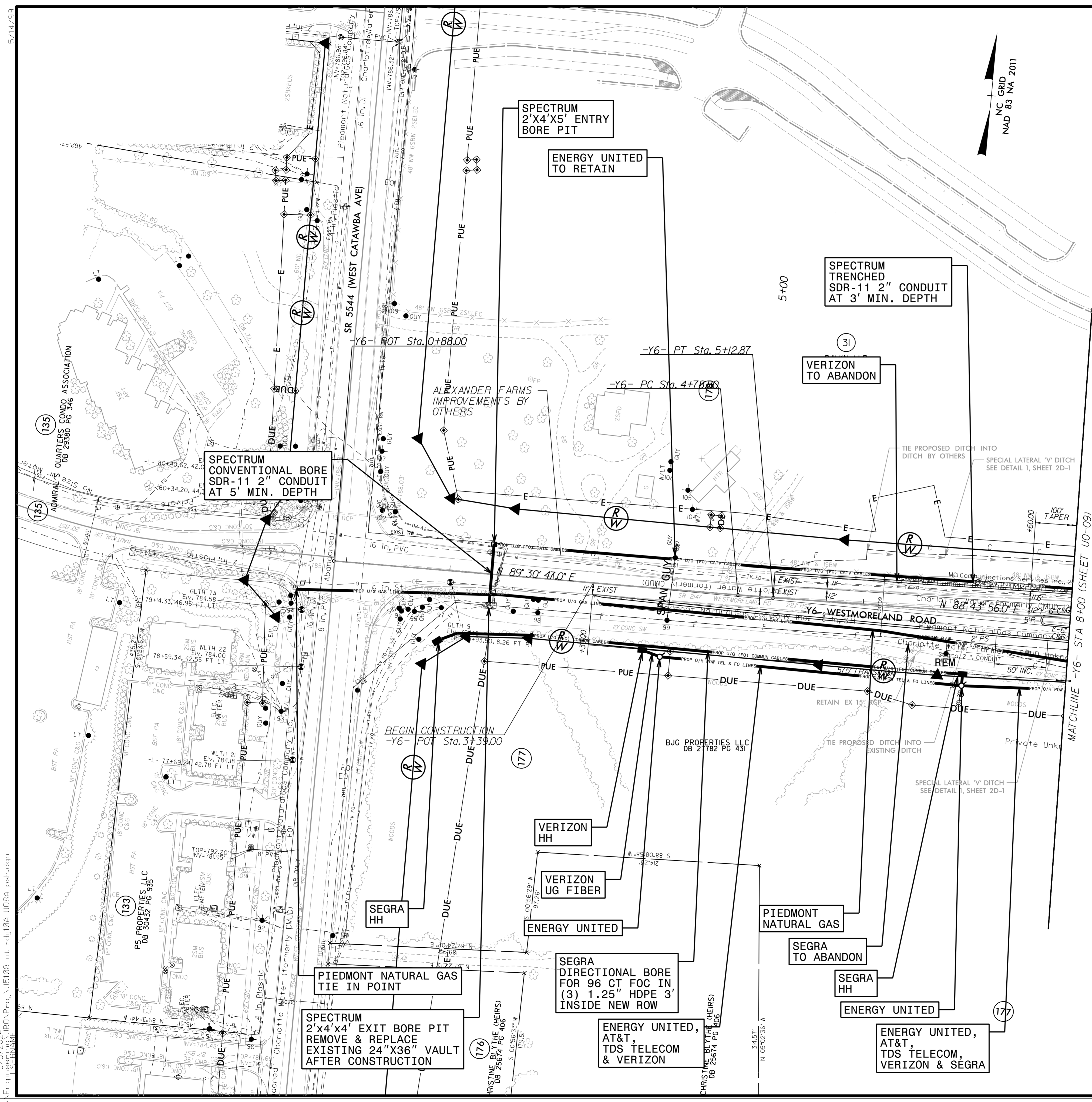
END GRADE
BEGIN FULL DEPTH RECLAMATION
-L- POT Sta. 94+55.00 =
-LI- POT Sta. 10+00.00



8/17/99
2/5/2024
I:\Engineering\UBO\Proj\U5108-ut-l-rdy10-U008-psh.dgn

UTILITIES BY OTHERS

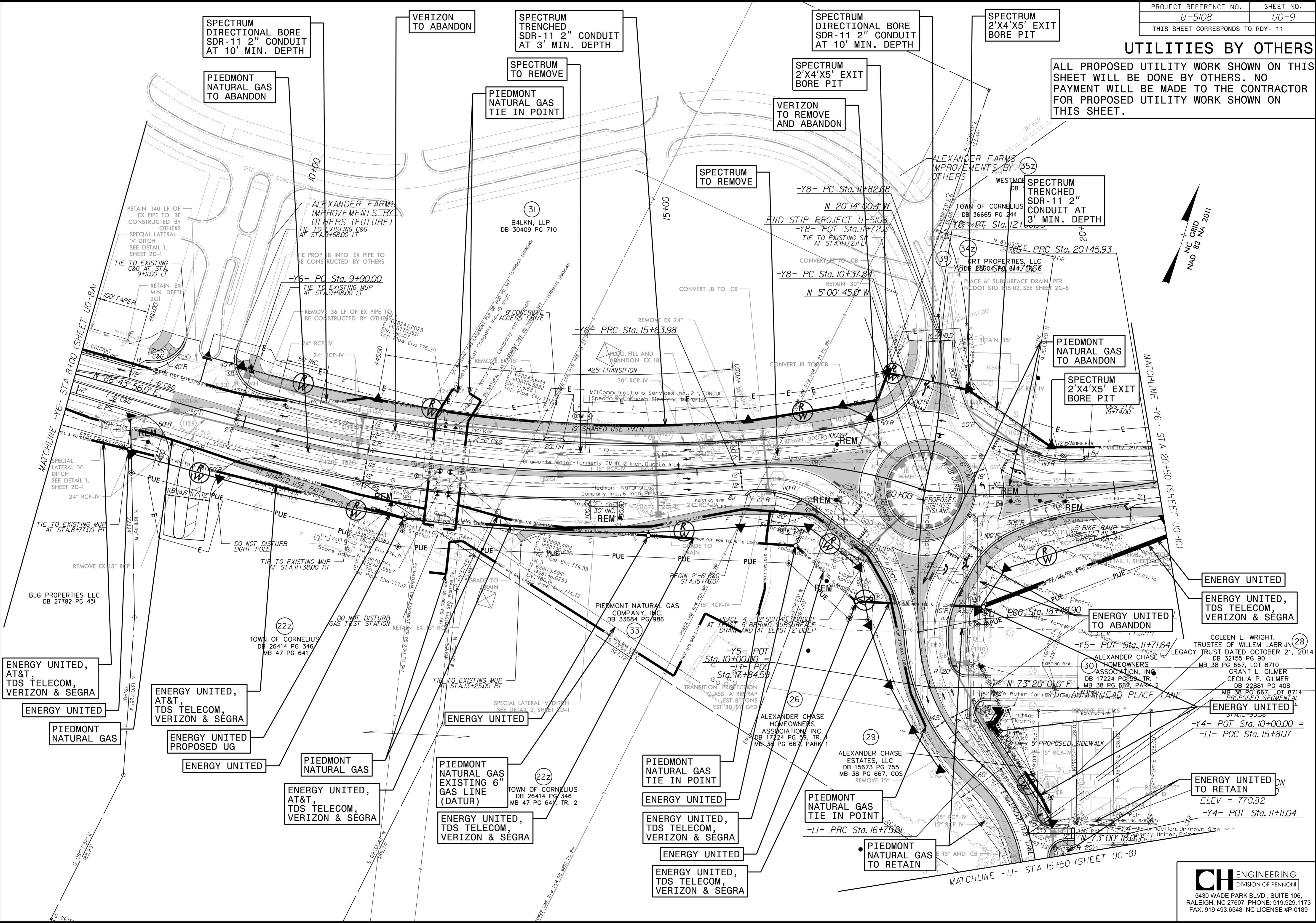
ALL PROPOSED UTILITY WORK SHOWN ON THIS SHEET WILL BE DONE BY OTHERS. NO PAYMENT WILL BE MADE TO THE CONTRACTOR FOR PROPOSED UTILITY WORK SHOWN ON THIS SHEET.



3/5/2024 10:00 AM C:\Users\psh.dgn\Projects\U08A\U08A.psh.dgn

UTILITIES BY OTHERS

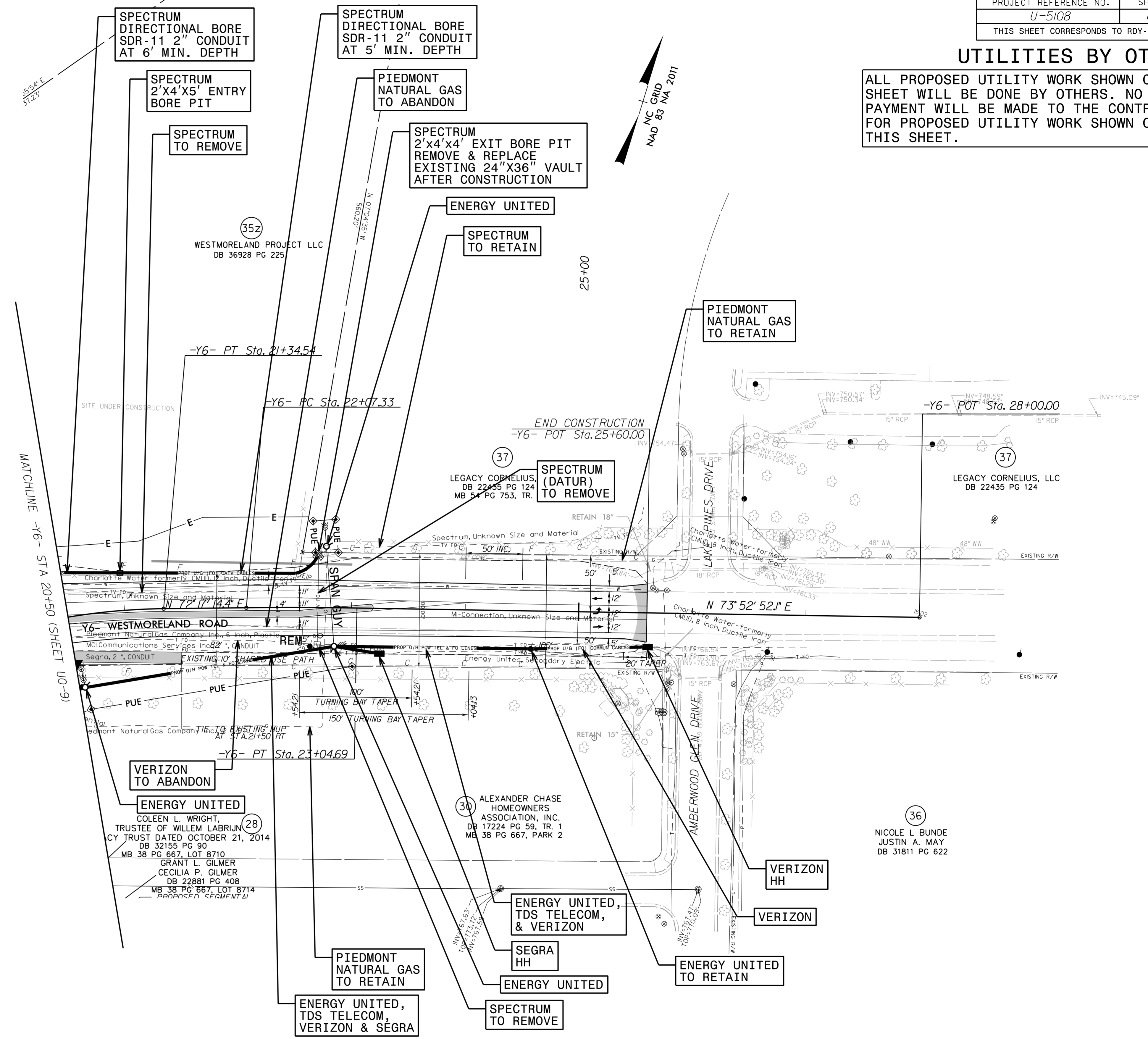
ALL PROPOSED UTILITY WORK SHOWN ON THIS SHEET WILL BE DONE BY OTHERS. NO PAYMENT WILL BE MADE TO THE CONTRACTOR FOR PROPOSED UTILITY WORK SHOWN ON THIS SHEET.



8/17/99
 2/5/2024
 C:\Users\jg\OneDrive\Engineering\U00\Projs\U5108\rdy\11\U009_psh.dgn

UTILITIES BY OTHERS

ALL PROPOSED UTILITY WORK SHOWN ON THIS SHEET WILL BE DONE BY OTHERS. NO PAYMENT WILL BE MADE TO THE CONTRACTOR FOR PROPOSED UTILITY WORK SHOWN ON THIS SHEET.



8/17/99
 2/5/2024
 IN-SERVICES\Engineering\UB0\Proj\U5108-ut-rd\12_U010_psh.dgn