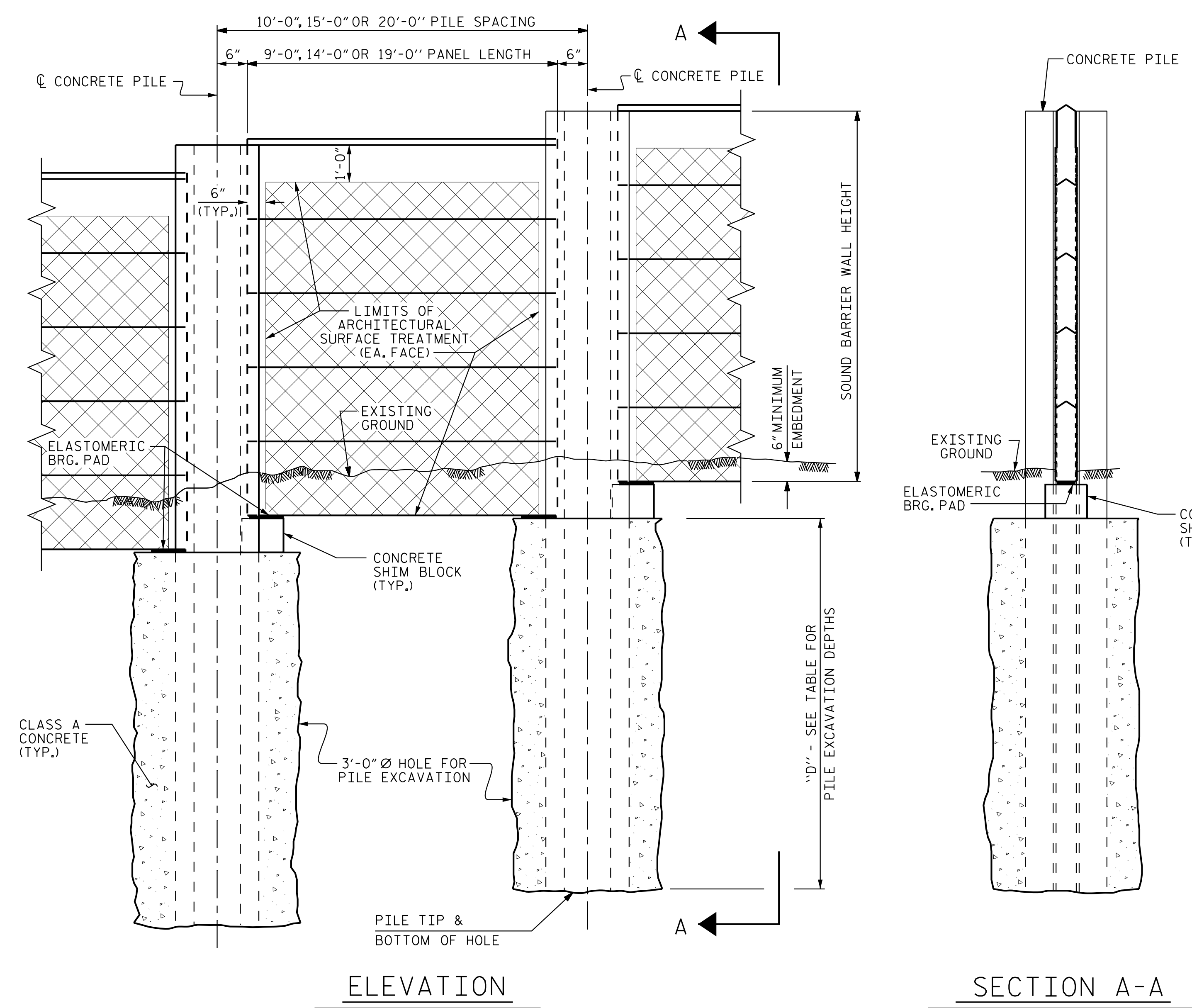


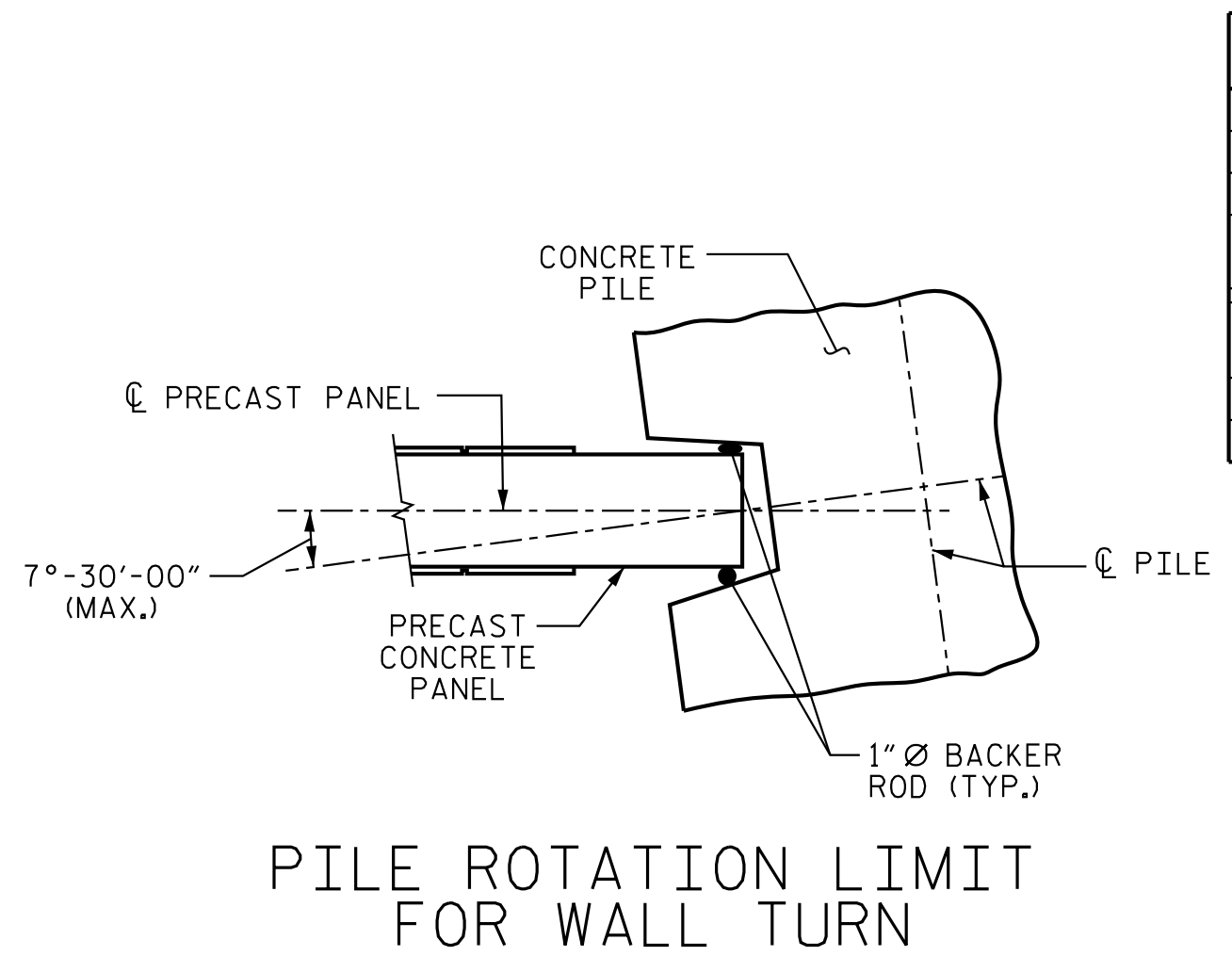
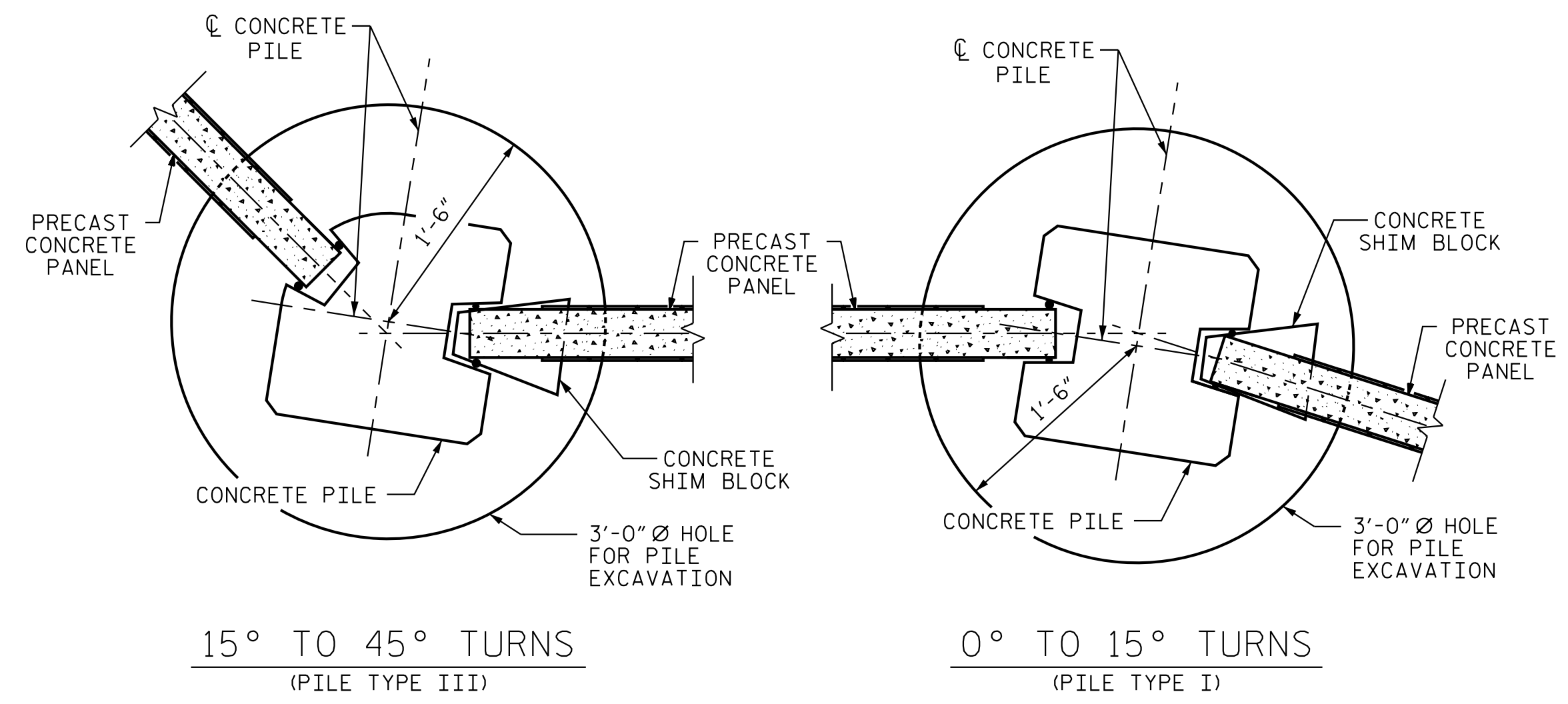
NOTES

- FOR SOUND BARRIER WALL, SEE SPECIAL PROVISIONS.
- CONSTRUCT SOUND BARRIER WALL TO LINES AND GRADES SHOWN ON THE ROADWAY PLANS.
- PROVIDE PANELS WITH A FLAT BOTTOM.
- VERIFY THE LOCATION OF UNDERGROUND UTILITIES BEFORE DRILLING HOLES TO ENSURE SUFFICIENT CLEARANCE IS AVAILABLE.
- ADJUST PILE EXCAVATION ELEVATIONS TO MAINTAIN 6" MINIMUM EMBEDMENT OF THE BOTTOM PANEL.
- USE CLASS AA CONCRETE FOR PANELS AND CLASS A CONCRETE PILE EXCAVATION BACKFILL, IN ACCORDANCE WITH ARTICLE 1000-3 OF THE STANDARD SPECIFICATIONS.
- AT THE CONTRACTOR'S OPTION, USE 10'-0", 15'-0", OR 20'-0" PILE SPACINGS. STANDARD PRECAST CONCRETE PANELS MAY BE USED WITH THE 10'-0" AND 15'-0" PILE SPACING.
- IF A PILE SPACING DIFFERENT THAN THAT SHOWN IN THE ROADWAY PLANS IS PROPOSED, SUFFICIENT CLEARANCE SHALL BE MAINTAINED AROUND THE PROPOSED 15" RCP AT APPROXIMATE STATION 37+10.00 -L- (11+00.00 -NB3-). SEE ROADWAY PLANS FOR ADDITIONAL INFORMATION.
- FOR SOUND BARRIER WALL STATIONS, OFFSETS, AND WALL ENVELOPE, SEE ROADWAY PLANS.
- PLACE 1" Ø BACKER RODS FULL HEIGHT ON EACH SIDE OF THE PRECAST PANELS. SET AND SEAL THE BACKER ROD IN PLACE WITH SEALANT THAT CONFORMS WITH ARTICLE 1028-3 OF THE STANDARD SPECIFICATIONS.
- FOR SUBMITTAL OF WORKING DRAWINGS, SEE SPECIAL PROVISIONS.
- FOR FALSEWORK AND FORMWORK, SEE SPECIAL PROVISIONS.
- FOR LAYOUT AND DETAILS OF #3 TIE BARS, SEE STD. SBW3.

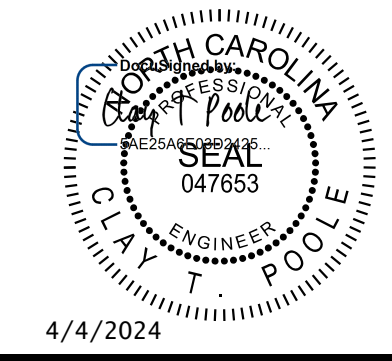
PILE EXCAVATION DEPTHS "D"				
WALL -NB3-		FROM : STA. 10+00.00 TO : STA. 17+20.00		
3'-0" Ø HOLE	PILE SPACING	WALL HEIGHT		
		H ≤ 15'	15' < H ≤ 20'	20' < H ≤ 25'
10'-0"	8'-0"	10'-0"	11'-0"	
15'-0"	9'-0"	11'-0"	13'-0"	
20'-0"	10'-0"	13'-0"	15'-0"	



PILE REINFORCING STEEL					
WIND EXPOSURE CATEGORY B, DESIGN WIND PRESSURE = 27 PSF					
PILE SPACING	MAXIMUM WALL HEIGHT (H)	PILE TYPE I	PILE TYPE II	PILE TYPE III	PILE TYPE III ALT.
		VERTICAL REINFORCING STEEL	VERTICAL REINFORCING STEEL	VERTICAL REINFORCING STEEL	VERTICAL REINFORCING STEEL
10'-0"	H ≤ 20'	4 - #5 EA. FACE	4 - #5 EA. FACE	3 - #5 SHORT FACE 4 - #5 LONG FACE	3 - #5 SHORT FACE 4 - #5 LONG FACE
	20' < H ≤ 25'	4 - #6 EA. FACE	4 - #5 EA. FACE	3 - #7 SHORT FACE 4 - #7 LONG FACE	3 - #7 SHORT FACE 4 - #7 LONG FACE
	25' < H ≤ 30'	4 - #7 EA. FACE	4 - #7 EA. FACE	3 - #8 SHORT FACE 4 - #8 LONG FACE	3 - #8 SHORT FACE 4 - #8 LONG FACE
15'-0"	H ≤ 20'	4 - #6 EA. FACE	4 - #5 EA. FACE	3 - #6 SHORT FACE 4 - #6 LONG FACE	3 - #6 SHORT FACE 4 - #6 LONG FACE
	20' < H ≤ 25'	4 - #7 EA. FACE	4 - #7 EA. FACE	3 - #8 SHORT FACE 4 - #8 LONG FACE	3 - #8 SHORT FACE 4 - #8 LONG FACE
	25' < H ≤ 30'	4 - #8 EA. FACE	4 - #8 EA. FACE	3 - #10 SHORT FACE 4 - #10 LONG FACE	3 - #10 SHORT FACE 4 - #10 LONG FACE
20'-0"	H ≤ 20'	4 - #6 EA. FACE	4 - #6 EA. FACE	3 - #7 SHORT FACE 4 - #7 LONG FACE	3 - #7 SHORT FACE 4 - #7 LONG FACE
	20' < H ≤ 25'	4 - #8 EA. FACE	4 - #8 EA. FACE	3 - #9 SHORT FACE 4 - #9 LONG FACE	3 - #9 SHORT FACE 4 - #9 LONG FACE
	25' < H ≤ 30'	4 - #10 EA. FACE	4 - #10 EA. FACE	3 - #11 SHORT FACE 4 - #11 LONG FACE	3 - #11 SHORT FACE 4 - #11 LONG FACE



BILL OF MATERIAL	
SOUND BARRIER WALL	6157 S.F.
ARCHITECTURAL SURFACE TREATMENT	10188 S.F.
QUANTITIES PROVIDED ARE APPROXIMATE AND ARE FOR BID PURPOSES ONLY.	
ARCHITECTURAL SURFACE TREATMENT	
TEXTURE OPTION:	STANDARD BRICK FORMLINER
STAIN OPTION:	FS 30152



Kimley»Horn
421 Fayetteville Street, Suite 600
Raleigh, NC 27601-1772
Phone (919) 677-2000 NC LICENSE # F-0102

PROJECT NO. U-5108
MECKLENBURG COUNTY
STATION: 36+00.00 -L-
10+00.00 -NB3-

SHEET 1 OF 3
STATE OF NORTH CAROLINA
DEPARTMENT OF TRANSPORTATION
RALEIGH
STANDARD
SOUND BARRIER WALL
No. -NB3-

REVISIONS						SHEET NO. SBW-1
NO.	BY:	DATE:	NO.	BY:	DATE:	
1			3			TOTAL SHEETS 3
2			4			

**DOCUMENT NOT CONSIDERED FINAL
UNLESS ALL SIGNATURES COMPLETED**

K:\BID1_Structures\Bridges\NC\01036359 - U-5108\Cad\Drawings\Sound Barrier Wall\U5108-SMU-SBW01.dgn 4/4/2024

ASSEMBLED BY :	D. D. LOWERY	DATE :	11/19
CHECKED BY :	C. T. POOLE	DATE :	11/19
DRAWN BY :	MAA 6/11	REV. 9/26/14	MAA/TMG
CHECKED BY :	GM 6/11	REV. 10/17	MAA/THC
		REV. 5/18	MAA/THC