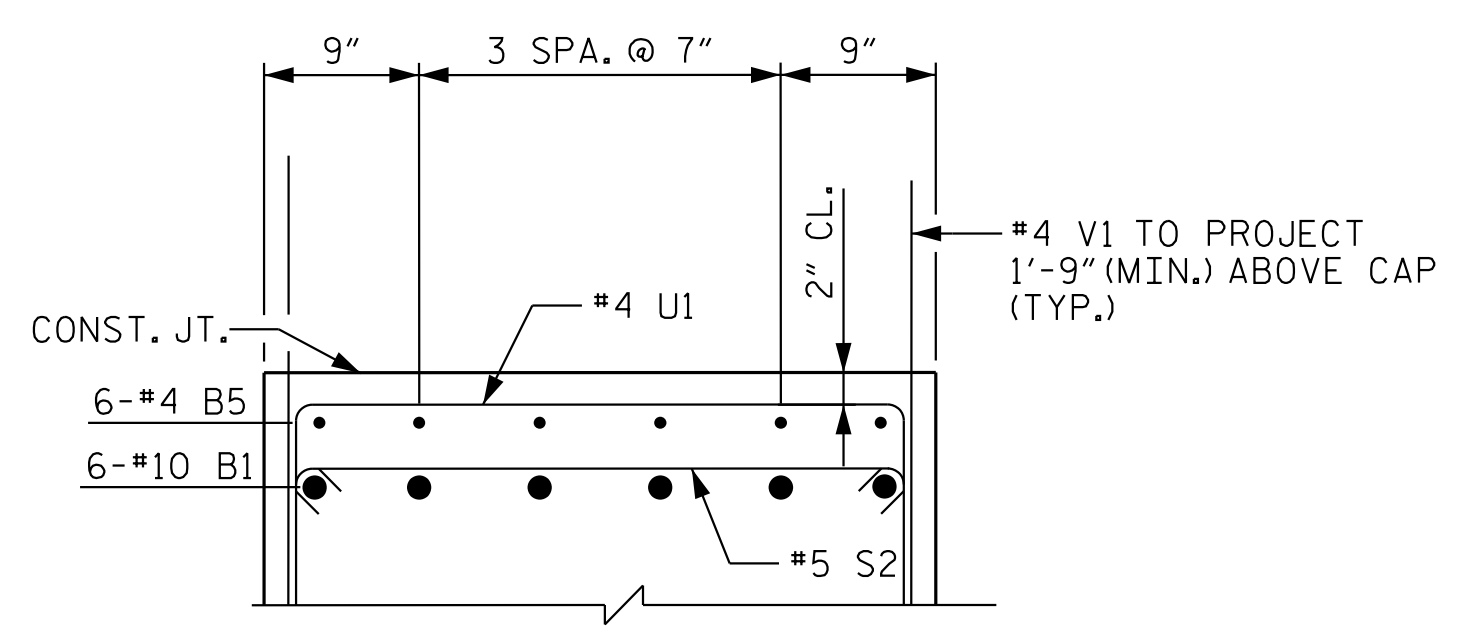
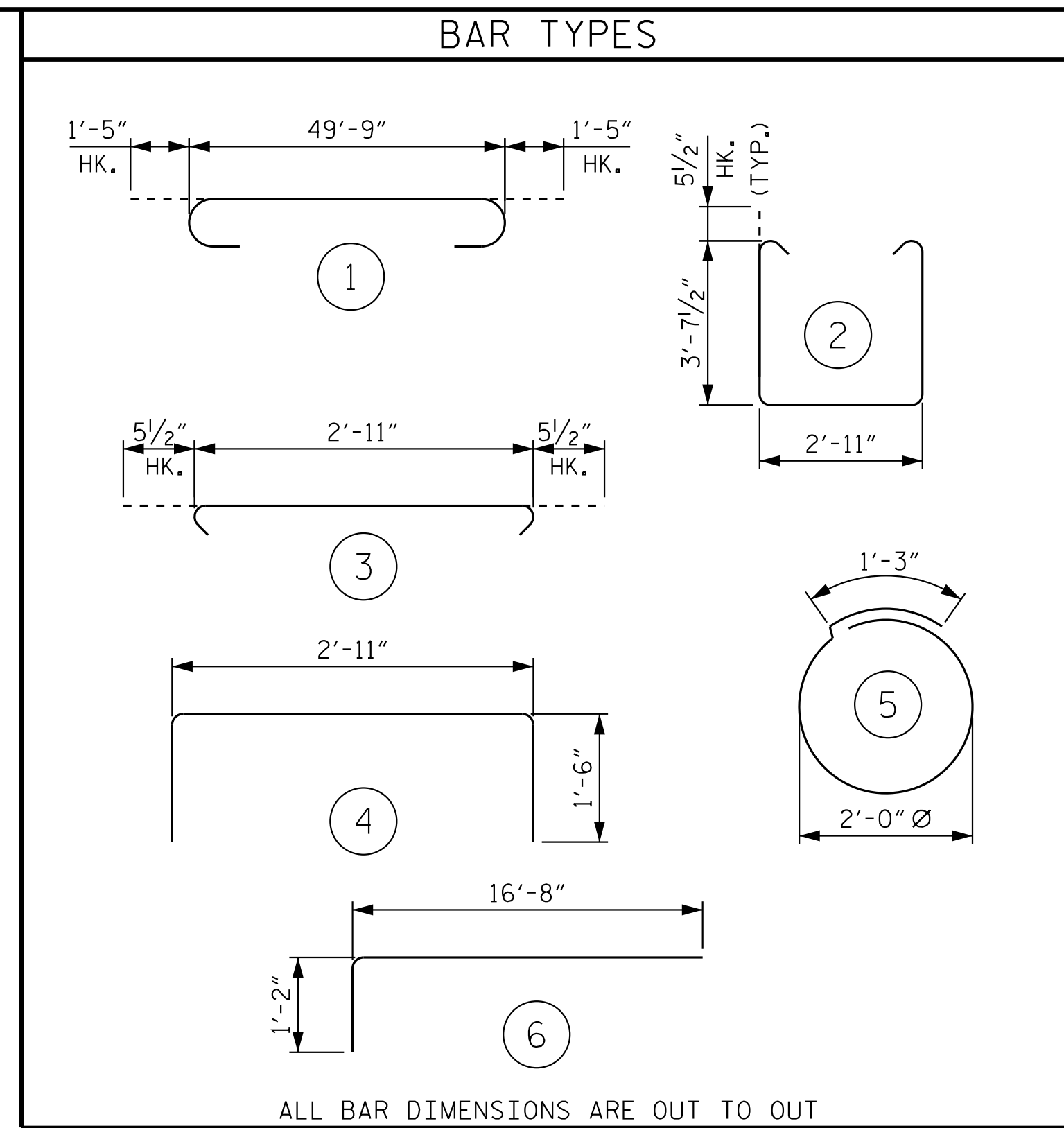


SECTION A-A  
(FOR LOCATION OF SECTION, SEE SHEET 1 OF 3)

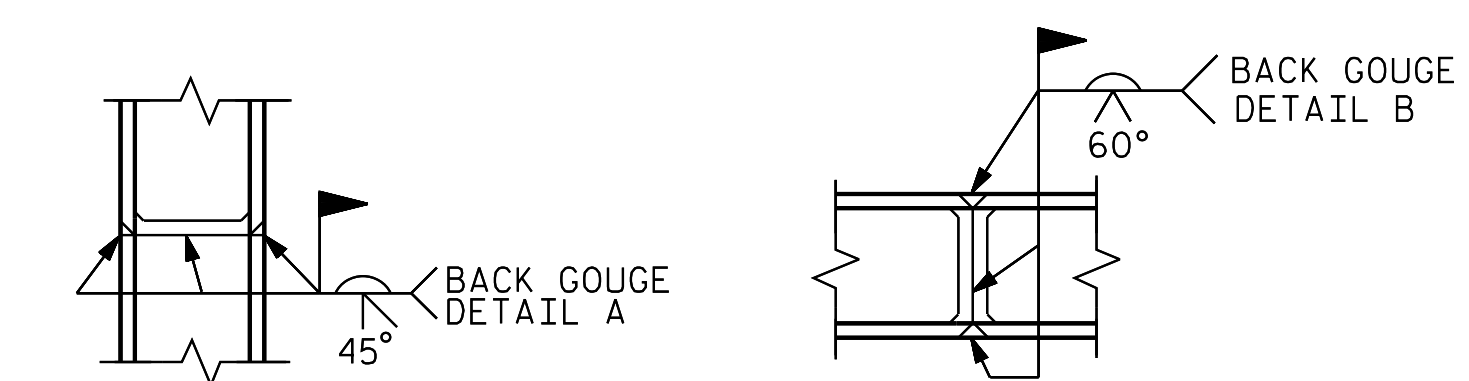


PARTIAL SECTION B-B  
(FOR LOCATION OF SECTION, SEE SHEET 1 OF 3)

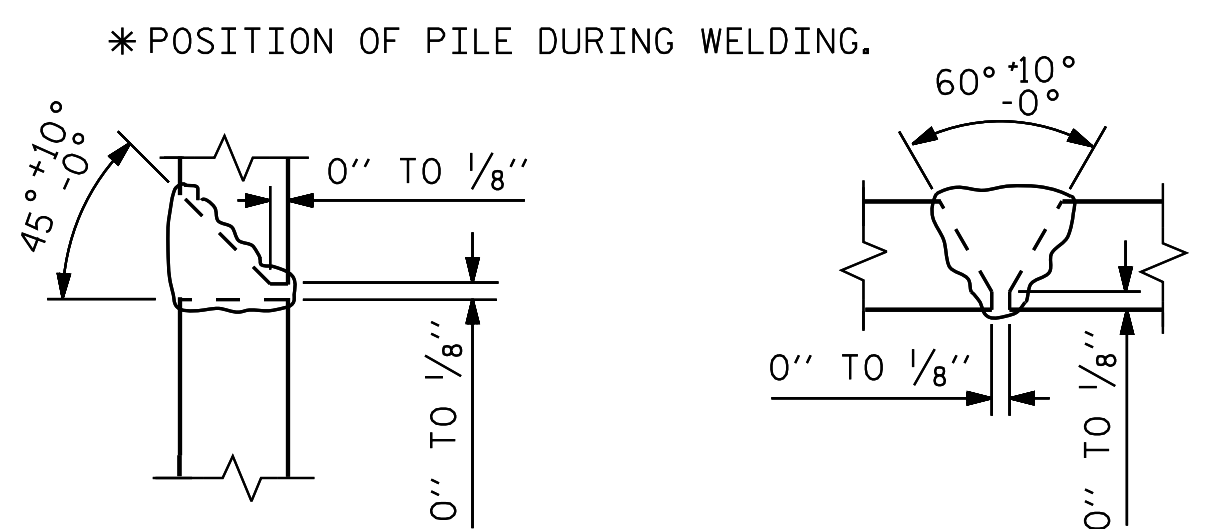


ALL BAR DIMENSIONS ARE OUT TO OUT

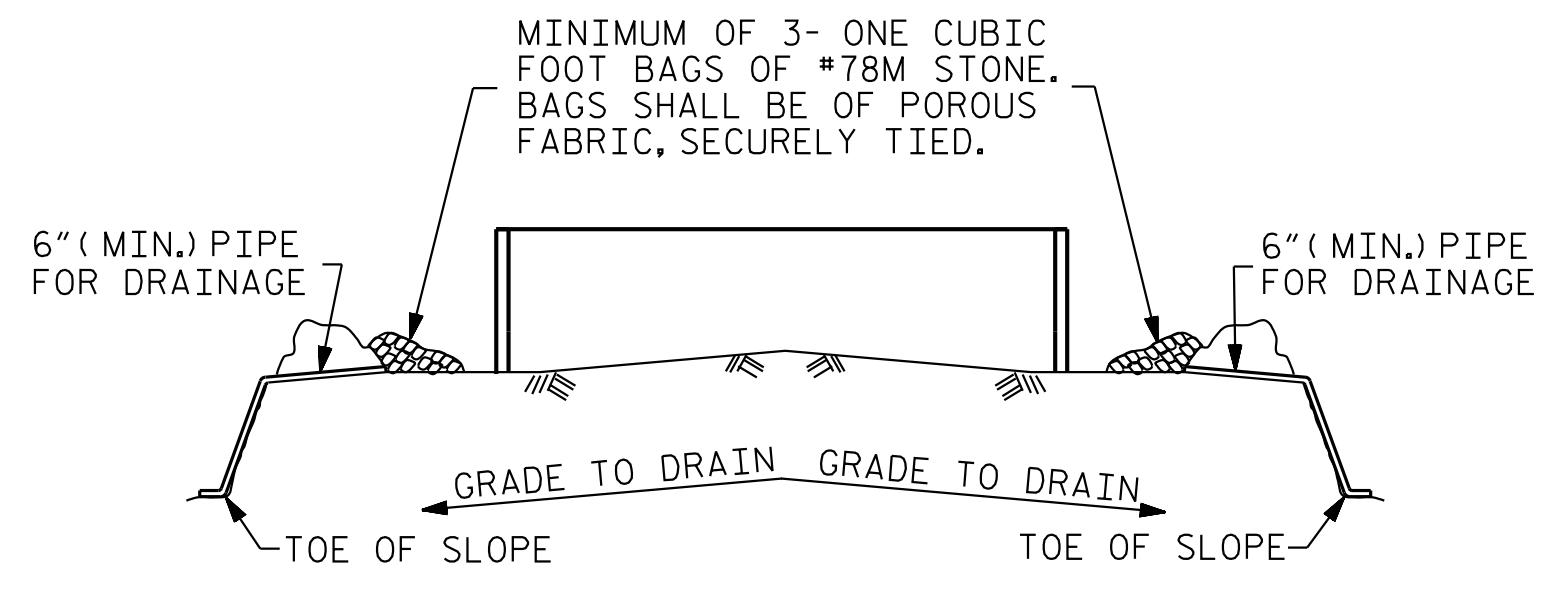
BILL OF MATERIAL					
END BENT 2					
BAR	NO.	SIZE	TYPE	LENGTH	WEIGHT
B1	12	10	1	52'-7"	2,715
B2	6	5	STR	49'-9"	311
B3	8	4	STR	26'-1"	139
B4	14	4	STR	2'-11"	27
B5	6	4	STR	18'-2"	73
H1	32	7	6	17'-10"	1,166
S1	48	5	2	11'-1"	555
S2	48	5	3	3'-10"	192
S3	28	4	5	7'-7"	142
U1	13	4	4	5'-11"	51
V1	88	4	STR	6'-0"	353
V2	4	5	STR	10'-4"	43
V3	10	5	STR	10'-5"	109
V4	10	5	STR	10'-6"	110
V5	8	5	STR	10'-7"	88
V6	4	5	STR	10'-6"	44
V7	10	5	STR	10'-7"	110
V8	10	5	STR	10'-8"	111
V9	8	5	STR	10'-9"	90
REINFORCING STEEL					6,429 LBS.
CLASS A CONCRETE BREAKDOWN					
POUR 1 (CAP, LOWER WING WALLS, & COLLARS)					30.8 C.Y.



\* PILE VERTICAL \* PILE HORIZONTAL OR VERTICAL



DETAIL "A" DETAIL "B"  
HP PILE SPLICE DETAILS



BAGGED STONE AND PIPE SHALL BE PLACED IMMEDIATELY AFTER COMPLETION OF END BENT EXCAVATION. PIPE MAY BE EITHER CONCRETE, CORRUGATED STEEL, CORRUGATED ALUMINUM ALLOY, OR CORRUGATED PLASTIC. PERFORATED PIPE WILL NOT BE ALLOWED.

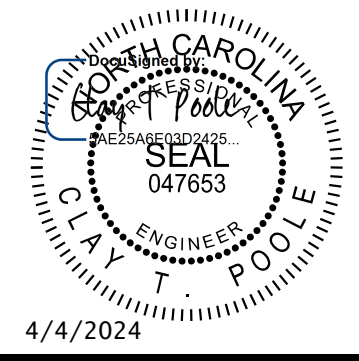
BAGGED STONE SHALL REMAIN IN PLACE UNTIL THE ENGINEER DIRECTS THAT IT BE REMOVED. THE CONTRACTOR SHALL REMOVE AND DISPOSE OF SILT ACCUMULATIONS AT BAGGED STONE WHEN SO DIRECTED BY THE ENGINEER. BAGS SHALL BE REMOVED AND REPLACED WHENEVER THE ENGINEER DETERMINES THAT THEY HAVE DETERIORATED AND LOST THEIR EFFECTIVENESS.

NO SEPARATE PAYMENT WILL BE MADE FOR THIS WORK AND THE ENTIRE COST OF THIS WORK SHALL BE INCLUDED IN THE UNIT CONTRACT PRICE BID FOR THE SEVERAL PAY ITEMS.

TEMPORARY DRAINAGE AT END BENT

PROJECT NO. U-5108  
MECKLENBURG COUNTY  
STATION: 74+01.00 -L-

SHEET 3 OF 3



**Kimley»Horn**  
421 Fayetteville Street, Suite 600  
Raleigh, NC 27601-1772  
Phone (919) 677-2000  
NC LICENSE # F-0102

STATE OF NORTH CAROLINA  
DEPARTMENT OF TRANSPORTATION  
RALEIGH  
SUBSTRUCTURE  
END BENT 2  
SECTION AND DETAILS

REVISIONS						SHEET NO.
NO.	BY:	DATE:	NO.	BY:	DATE:	S-30
1			3			TOTAL SHEETS
2			4			33

**DOCUMENT NOT CONSIDERED FINAL  
UNLESS ALL SIGNATURES COMPLETED**

This document, together with the concepts and designs presented herein, is an integral part of the contract. It is to be read and interpreted in conjunction with the contract documents. No part of this document shall be used without the written authorization and approval of Kimley-Horn and Associates, Inc. without liability to Kimley-Horn and Associates, Inc.

K:\BIDI-Structures\Bridges\NC\01036359 - U-5108\Cad\Drawings\08\_SML\06\_591403.dgn 2/28/2024

DRAWN BY: J. I. KIMBLE DATE: 10/2023  
CHECKED BY: T. H. ORR DATE: 10/2023  
DESIGN ENGINEER OF RECORD: C. T. POOLE DATE: 10/2023