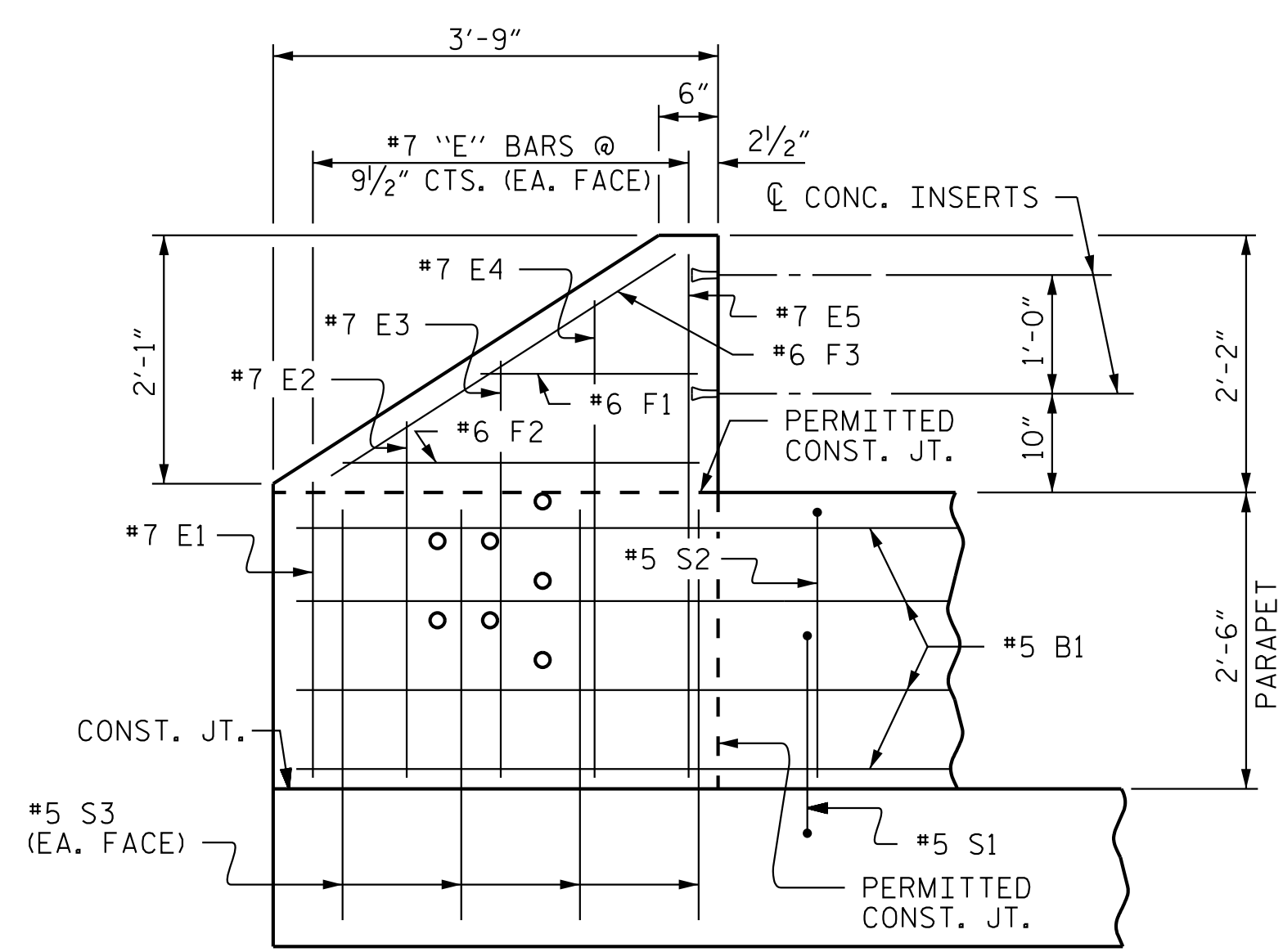
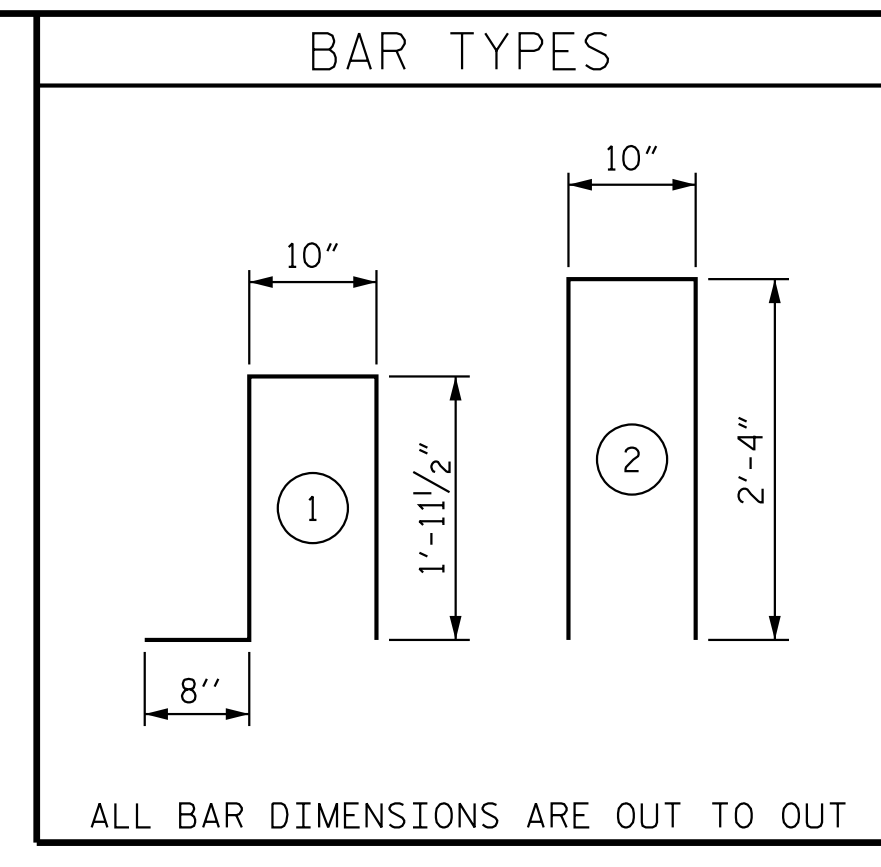


END VIEW

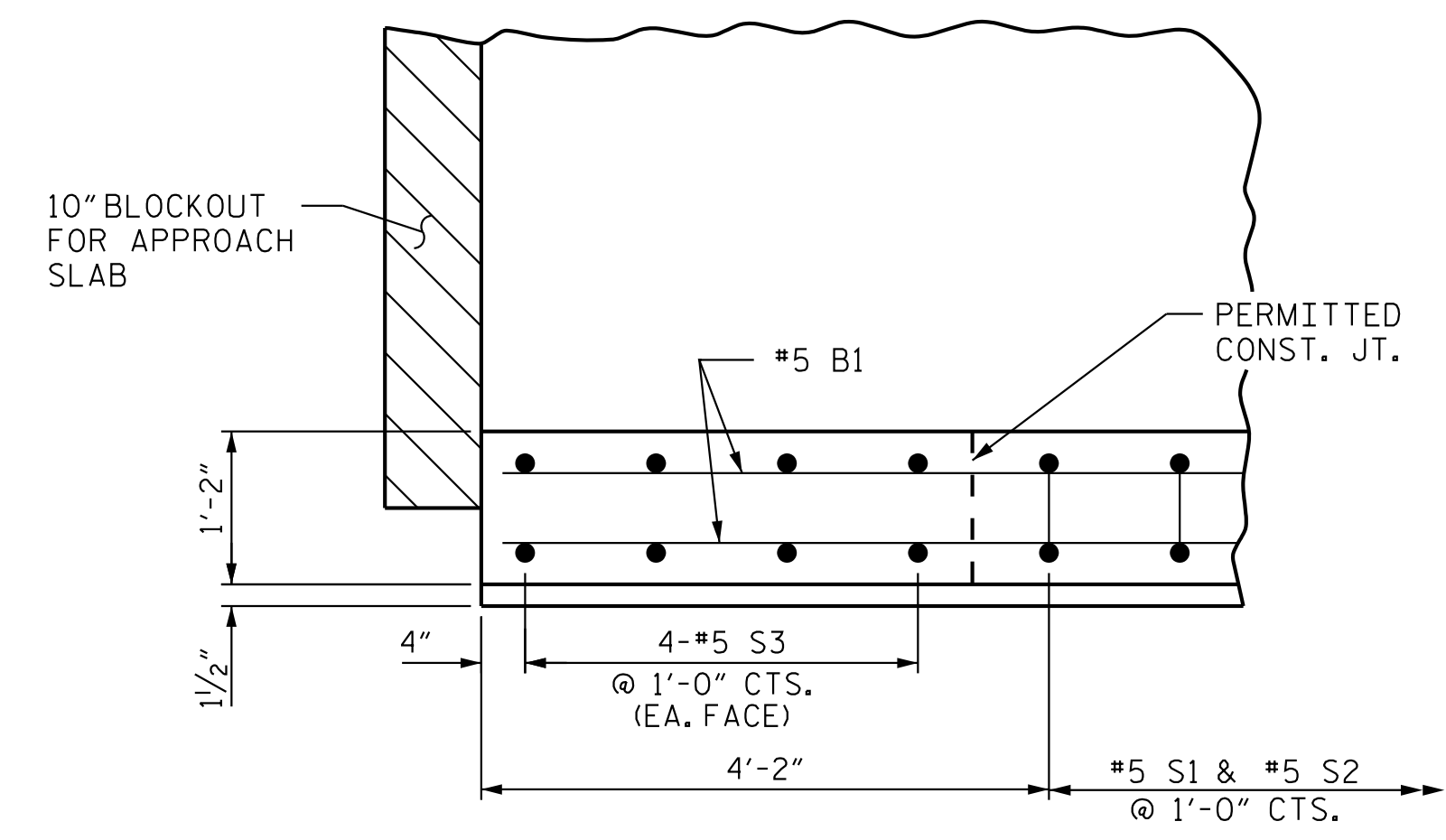


ELEVATION

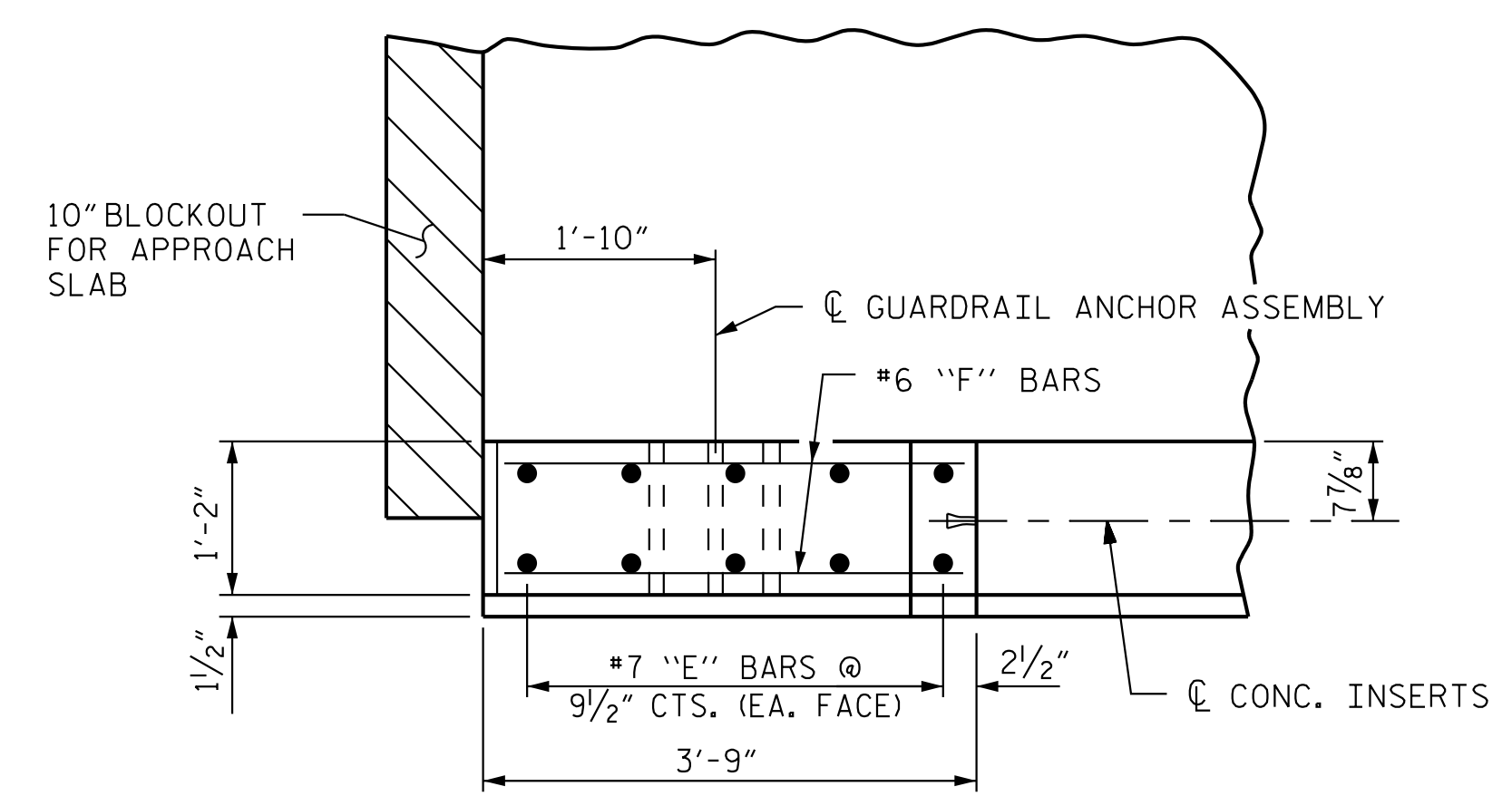
PARAPET AND END POST FOR TWO BAR RAIL



BILL OF MATERIAL					
2 CONCRETE PARAPETS AND 4 END POSTS					
BAR	NO.	SIZE	TYPE	LENGTH	WEIGHT
*B1	32	5	STR	20'-10"	695
*B2	48	5	STR	21'-8"	1,085
*E1	8	7	STR	2'-6"	41
*E2	8	7	STR	3'-0"	49
*E3	8	7	STR	3'-6"	57
*E4	8	7	STR	4'-0"	65
*E5	8	7	STR	4'-4"	71
*F1	8	6	STR	1'-10"	22
*F2	8	6	STR	3'-0"	36
*F3	8	6	STR	3'-5"	41
*S1	202	5	1	5'-5"	1,141
*S2	202	5	2	5'-6"	1,159
*S3	32	5	STR	3'-0"	100
* EPOXY COATED REINFORCING STEEL					4,562 LBS.
CLASS AA CONCRETE					24.2 C.Y.
1'-2" X 2'-6" CONCRETE PARAPET					216.67 LIN. FT.



PLAN OF PARAPET



PLAN OF END POST

NOTES

THE PARAPET IN EACH SPAN SHALL NOT BE CAST UNTIL ALL SLAB CONCRETE IN THAT SPAN HAS BEEN CAST AND HAS REACHED A MINIMUM COMPRESSIVE STRENGTH OF 3,000 PSI.

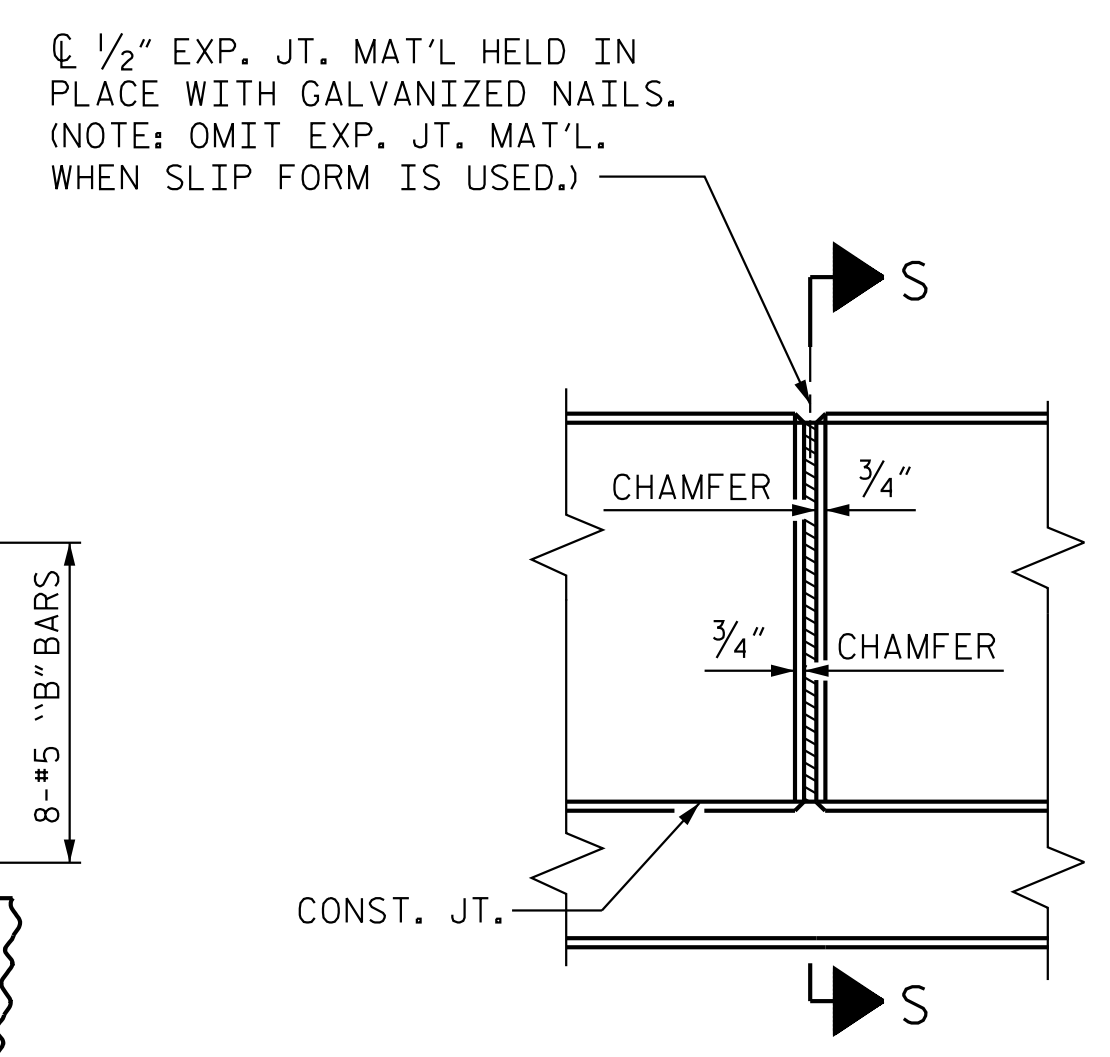
ALL REINFORCING STEEL IN PARAPET AND END POSTS SHALL BE EPOXY COATED.

THE #5 S1 & #5 S2 BARS MAY BE SHIFTED SLIGHTLY IN ORDER TO MAINTAIN A 2" MINIMUM CLEARANCE TO THE 1/2" EXPANSION JOINT MATERIAL IN PARAPET.

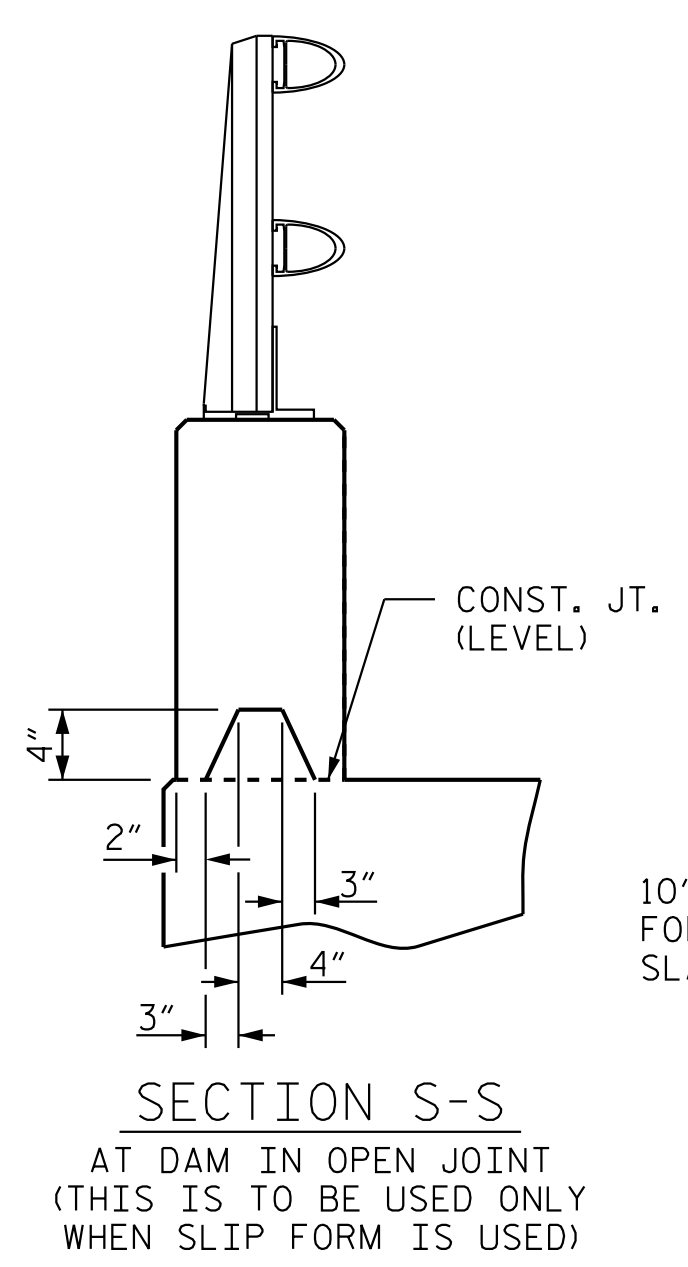
FOR DETAILS OF CONCRETE INSERTS IN END POSTS, SEE "RAIL POST SPACINGS AND END OF RAIL DETAILS" SHEET.

FOR DETAILS OF GUARDRAIL ANCHOR ASSEMBLIES, SEE "GUARDRAIL ANCHORAGE DETAILS FOR METAL RAIL" SHEET.

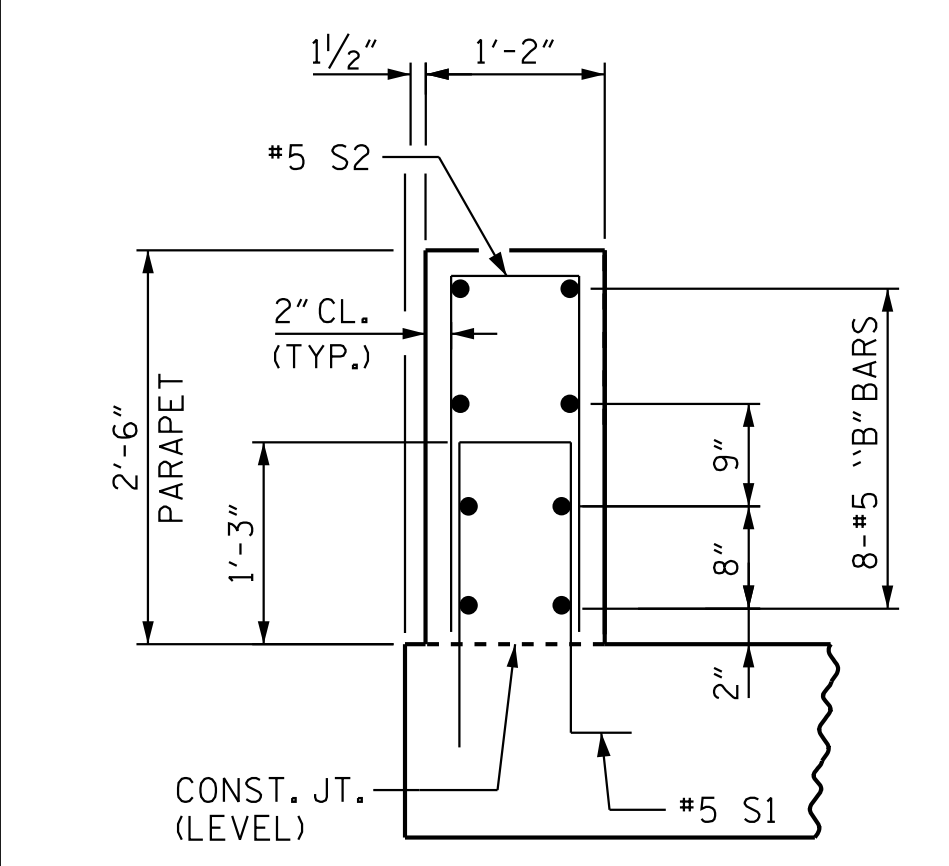
GROOVED CONTRACTION JOINTS, 1/2" IN DEPTH, SHALL BE TOOLED IN ALL EXPOSED FACES OF THE PARAPET AND IN ACCORDANCE WITH ARTICLE 825-10(B) OF THE STANDARD SPECIFICATIONS. A CONTRACTION JOINT SHALL BE LOCATED AT EACH THIRD POINT BETWEEN BARRIER RAIL EXPANSION JOINTS. ONLY ONE CONTRACTION JOINT IS REQUIRED AT MIDPOINT OF BARRIER RAIL SEGMENTS LESS THAN 20 FEET IN LENGTH AND NO CONTRACTION JOINTS ARE REQUIRED FOR THOSE SEGMENTS LESS THAN 10 FEET IN LENGTH.



ELEVATION AT EXPANSION JOINTS



SECTION S-S AT DAM IN OPEN JOINT (THIS IS TO BE USED ONLY WHEN SLIP FORM IS USED)

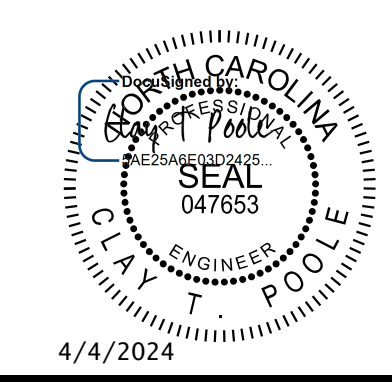


SECTION THRU PARAPET

ELEVATION AT EXPANSION JOINTS

PROJECT NO. U-5108
MECKLENBURG COUNTY
 STATION: 74+01.00 -L-

SHEET 4 OF 5



Kimley»Horn

421 Fayetteville Street, Suite 600
 Raleigh, NC 27601-1772
 Phone (919) 677-2000 NC LICENSE # F-0102

STATE OF NORTH CAROLINA
 DEPARTMENT OF TRANSPORTATION
 RALEIGH
 SUPERSTRUCTURE
 CONCRETE PARAPET
 DETAILS

REVISIONS						SHEET NO.
NO.	BY:	DATE:	NO.	BY:	DATE:	S-21
1			3			TOTAL SHEETS
2			4			33

DOCUMENT NOT CONSIDERED FINAL UNLESS ALL SIGNATURES COMPLETED

K:\RD1_Structures\Bridges\NC\011035359 - U-5108\Cad\Drawings\SMU_2MR4_591403.dgn 2/28/2024

DRAWN BY: J. I. KIMBLE DATE: 10/2023
 CHECKED BY: I. H. ORR DATE: 10/2023
 DESIGN ENGINEER OF RECORD: C. T. POOLE DATE: 10/2023