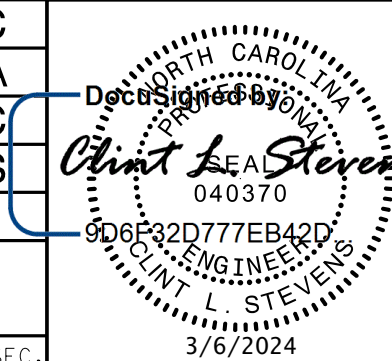
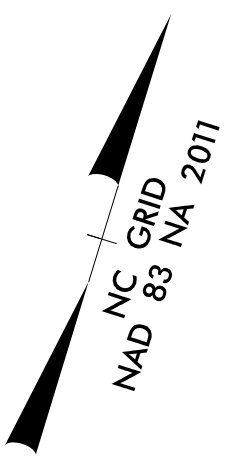


HINDE ENGINEERING
 License No. C-2639
 10815 Sikes Place, Suite 210 Charlotte, NC 28277

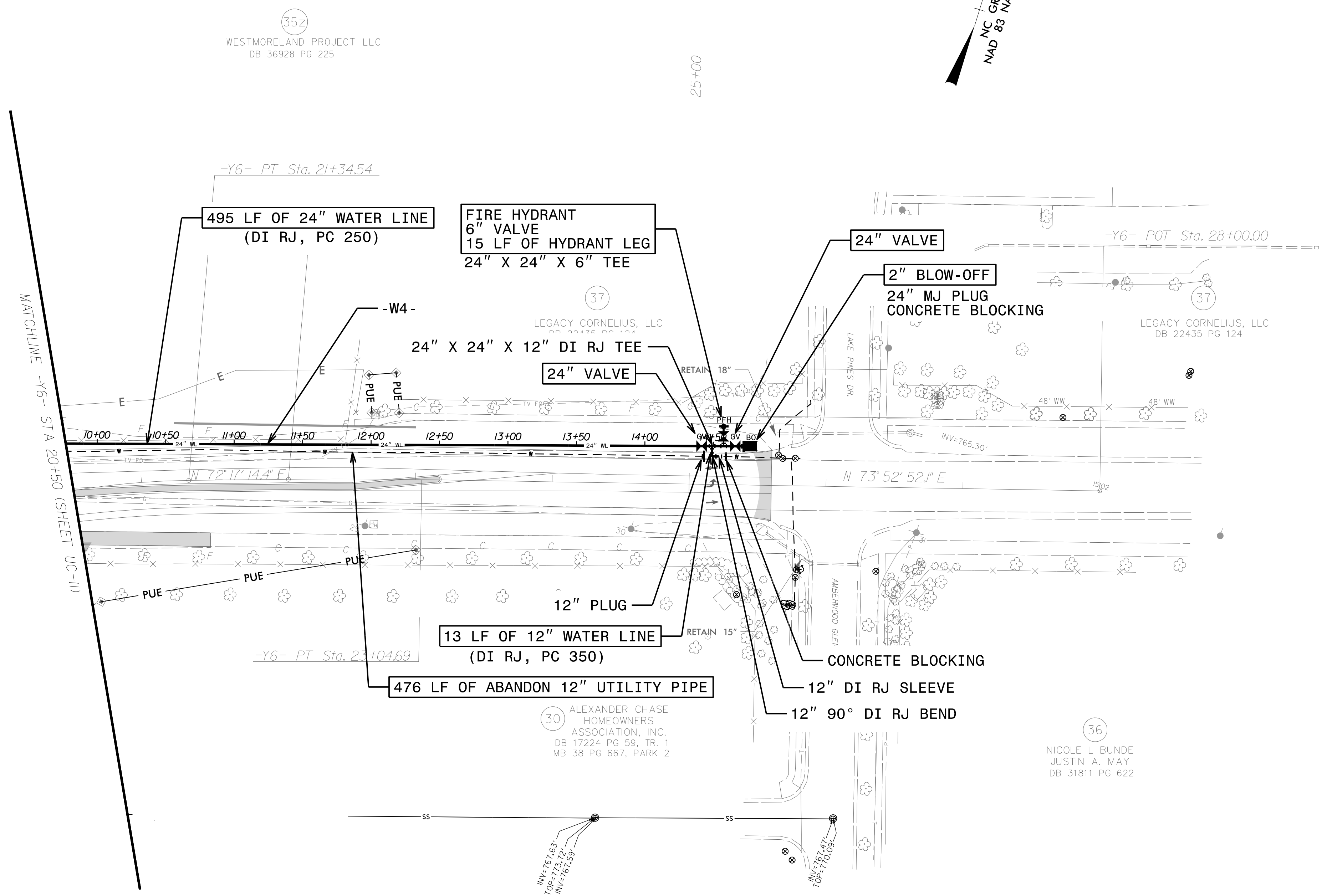
**DOCUMENT NOT CONSIDERED FINAL
 UNLESS ALL SIGNATURES COMPLETED**

PROJECT REFERENCE NO.	U-5108	SHEET NO.	UC-12
DESIGNED BY:	JKC		
DRAWN BY:	JNA		
CHECKED BY:	JKC		
APPROVED BY:	CLS		
REVISED:			
NORTH CAROLINA DEPARTMENT OF TRANSPORTATION		UTILITY CONSTRUCTION PLANS ONLY	
UTILITIES ENGINEERING SEC. PHONE: (919) 707-6690 FAX: (919) 250-4151			



UTILITY CONSTRUCTION

2024 MAR 20 09:05 2024 MAR 20 09:05 PROJECTS\2018\A2018401.00_NCDDT_U-5108\Design\Utilities\Engineering\UC-Proj\U-5108_Ut_redj12-UC12_psh.dgn



NOTE:
 THE ESTIMATED QUANTITY OF DUCTILE IRON WATER PIPE FITTINGS ON THIS PLAN SHEET IS 1,661 POUNDS. THE ACTUAL QUANTITY AND TYPE OF FITTINGS WILL VARY BASED ON FIELD CONDITIONS.