

CULVERT CONSTRUCTION SEQUENCE

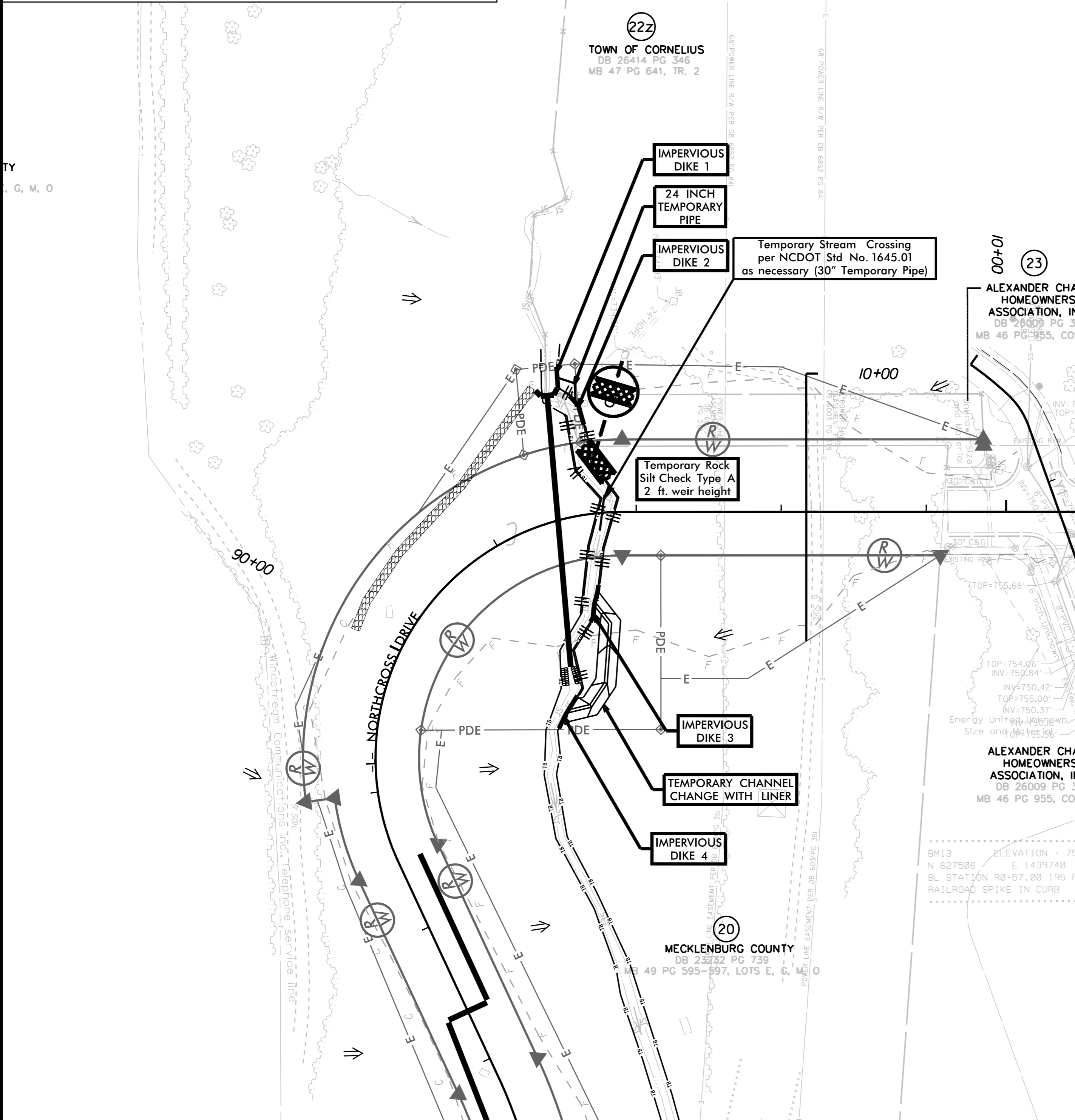
STA. 91+46 -L-

INCOMPLETE PLANS
DO NOT USE FOR R/W ACQUISITION

STAGE I

CULVERT CONSTRUCTION SEQUENCE Stage I

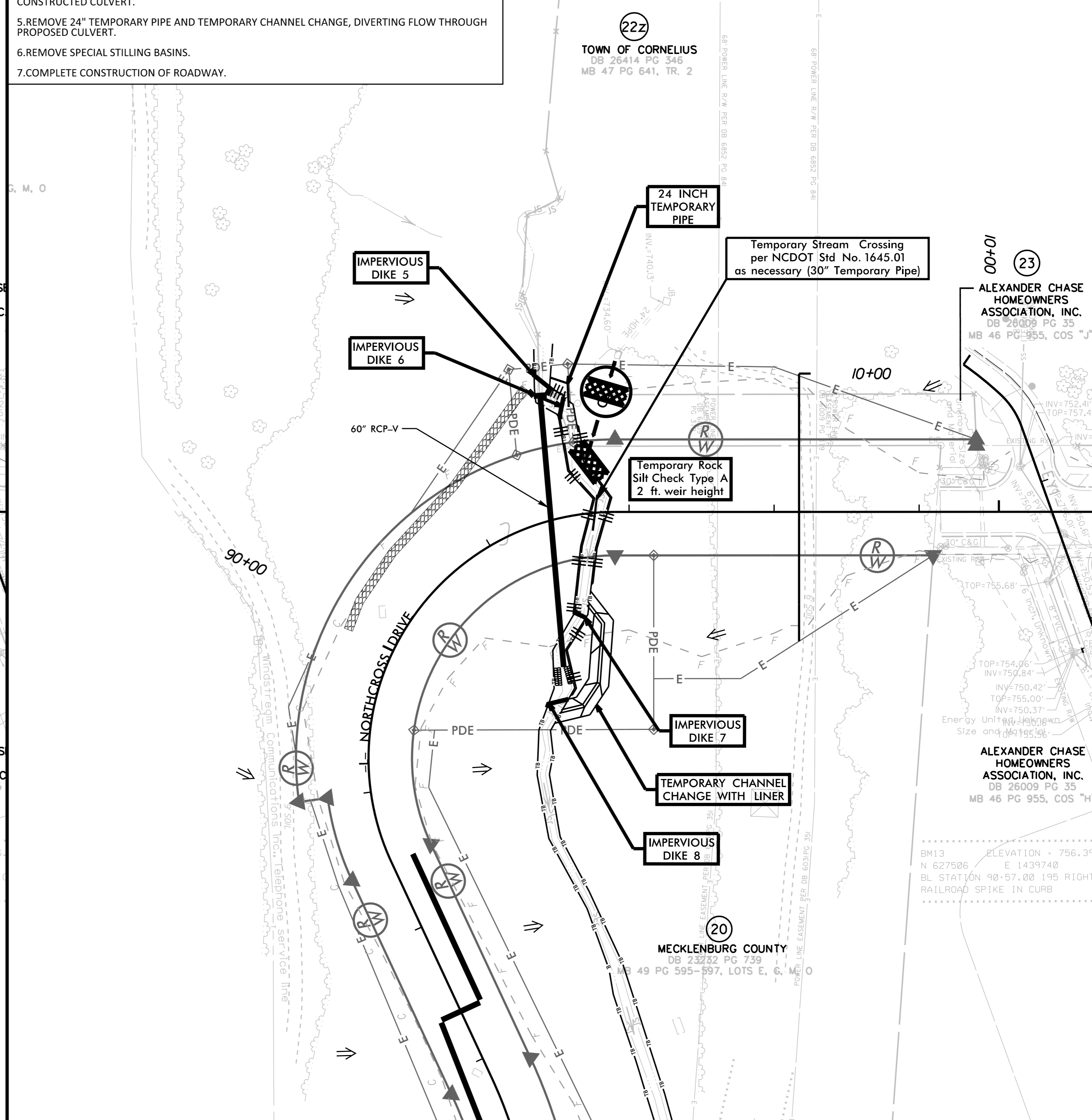
1. UTILIZE SPECIAL STILLING BASINS AS NEEDED THROUGHOUT CULVERT INSTALLATION.
2. CONSTRUCT IMPERVIOUS DIKES 1-4 TO PROTECT WORK AREA FOR 24" TEMPORARY PIPE AND TEMPORARY CHANNEL.
3. CONSTRUCT TEMPORARY CHANNEL CHANGE WITH LINER (2 FT BASE, 2 FT DEEP, 3:1 SIDE SLOPES) AND 24" TEMPORARY PIPE.
4. REMOVE IMPERVIOUS DIKES 1-4.



STAGE II

CULVERT CONSTRUCTION SEQUENCE Stage II

1. CONSTRUCT IMPERVIOUS DIKES 5-8, DIVERTING FLOW THROUGH THE 24" TEMPORARY PIPE AND TEMPORARY CHANNEL CHANGE.
2. DEWATER ENTRAPPED AREA AND CONSTRUCT PROPOSED 60" RPC CULVERT AND HEADWALLS IN THE DRY ACCORDING TO PLANS. AREA TO BE DEWATERED SHALL BE EQUAL TO ONE DAY'S WORK.
3. EXCAVATE ANY ACCUMULATED SILT AND DEWATER BEFORE REMOVAL OF IMPERVIOUS DIKES.
4. REMOVE IMPERVIOUS DIKES (DOWNSTREAM DIKES FIRST), ALLOWING FLOW THROUGH NEWLY CONSTRUCTED CULVERT.
5. REMOVE 24" TEMPORARY PIPE AND TEMPORARY CHANNEL CHANGE, DIVERTING FLOW THROUGH PROPOSED CULVERT.
6. REMOVE SPECIAL STILLING BASINS.
7. COMPLETE CONSTRUCTION OF ROADWAY.



NAD 83/NSRS 2011

5/14/2024

K:\CHL_PR\01036359 - U-5108 (Northcross) DS\NE\Environmental\Design\U-5108.ec_psh_10A_culvert_sequence.dgn

3/13/2024