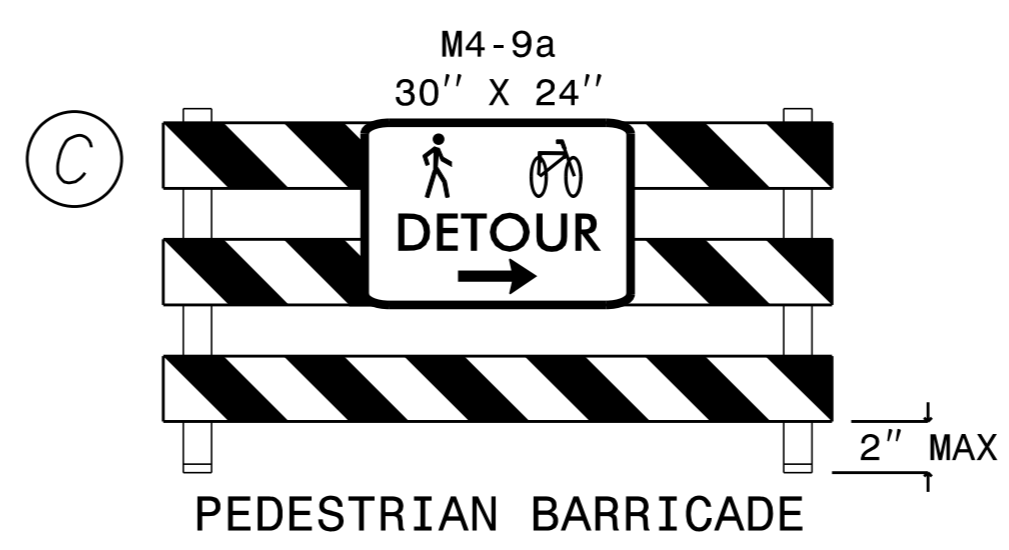
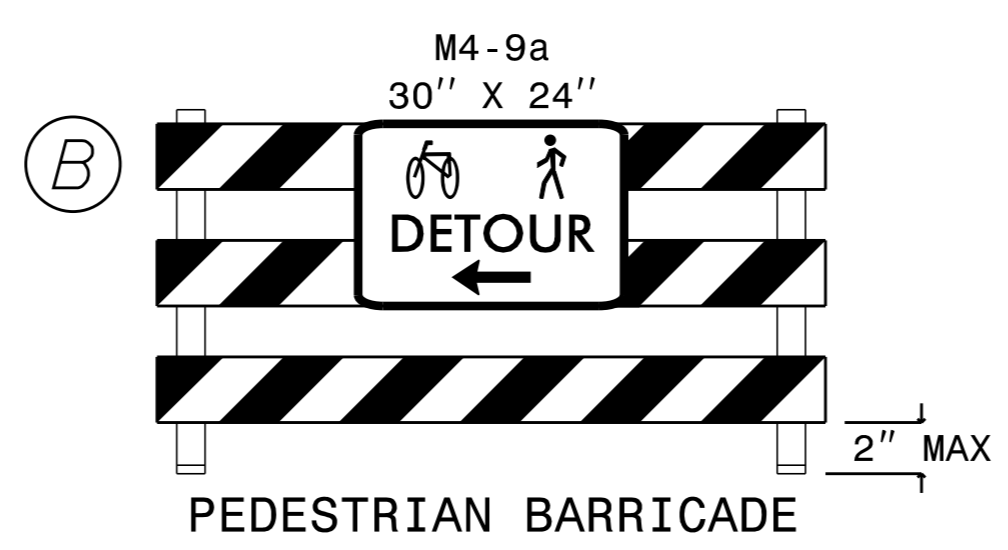
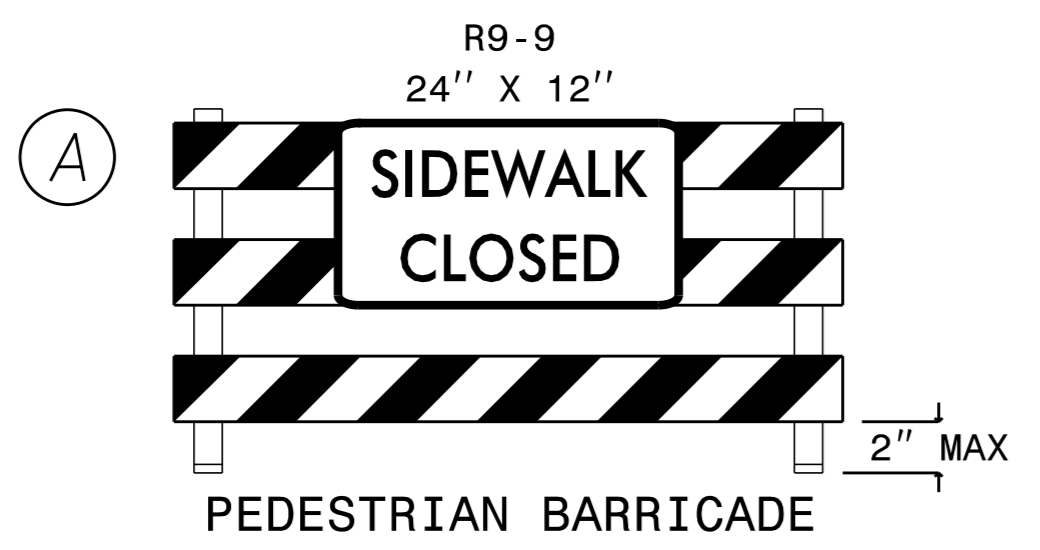


SCALE: 1" = 500'



K:\CHL_PRA\1036359 - U-5108 (Northcross)\DSMTrafficControl\CP\Sheets\U-5108_rdy_imp_12.dgn

3/12/2024

NOTE:
REFER TO RSD 1101.03 SHEET 1 OF 9
FOR ADVANCE WARNING SIGNAGE
AND BARRICADE PLACEMENT

LEGEND	
	EXISTING PAVED PATH/SIDEWALK
	BARRICADE
	STATIONARY SIGN

Kimley»Horn

APPROVED: DATE: 4/9/2024

DESIGNED BY:

ANTHONY J. SPACEK
ENGINEER
SEAL 034207
NORTH CAROLINA PROFESSIONAL ENGINEER

DIVISION OF HIGHWAYS
STATE OF NORTH CAROLINA
DEPARTMENT OF TRANSPORTATION
WORK ZONE TRAFFIC CONTROL

**PHASE 2
SIDEWALK
DETOUR PLAN**