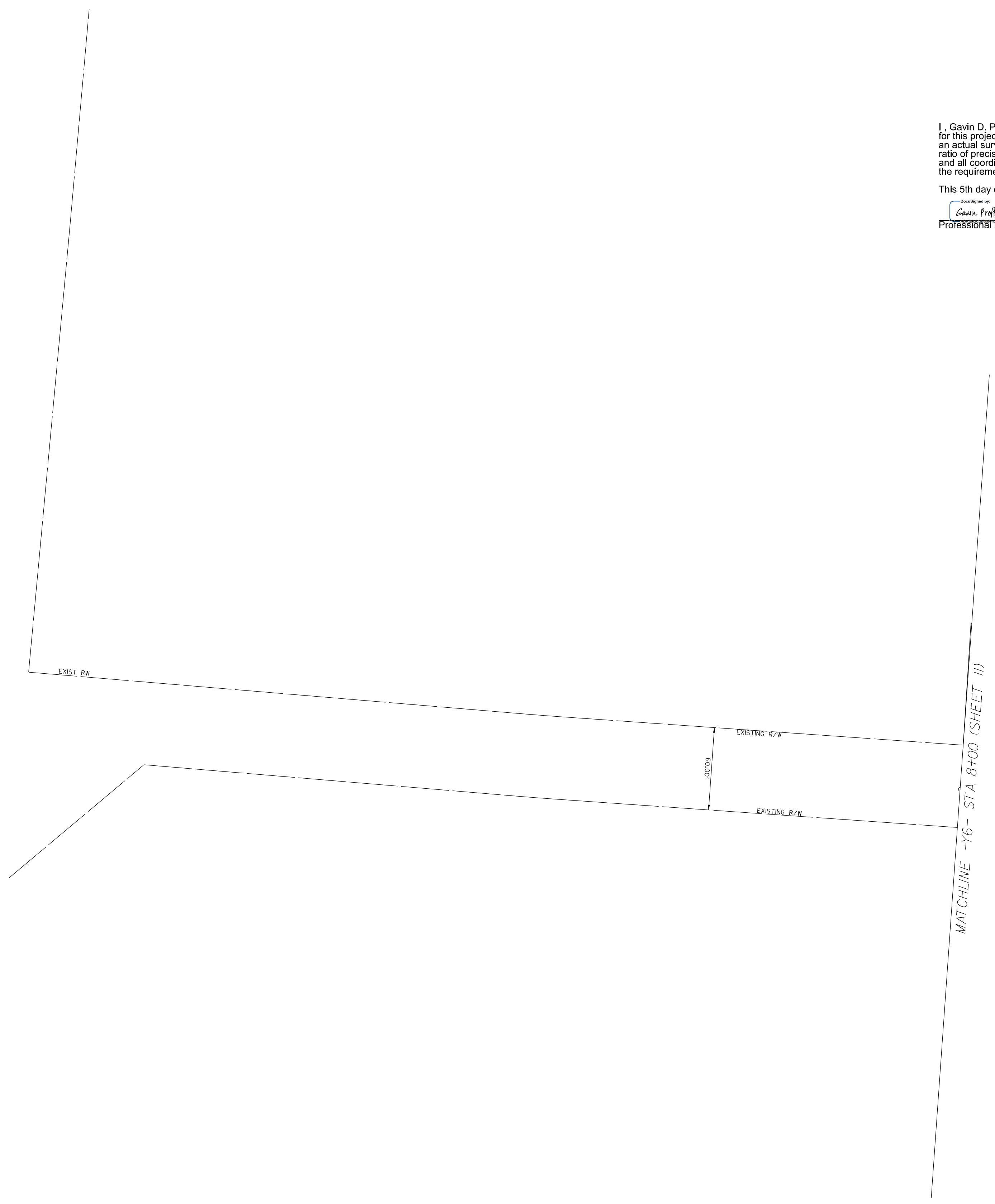


6/2/24

REVISIONS


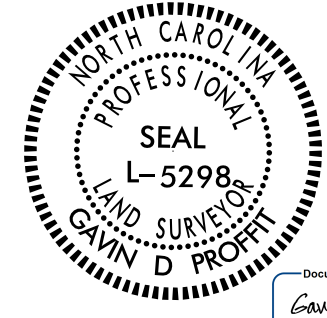
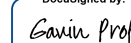
DE: JAN 2024 15:01  
C:\Users\50158034\OneDrive\Projects\AT\PE\3M\0003\RDW\_Staking\_Division\_10\u5108.1s.r-w10a.dgn  
dus\topless



I, Gavin D. Proffit, certify that the right of way and permanent easement monumentation for this project shown herein was completed under my direct and responsible charge from an actual survey made under my supervision, that all horizontal closures had a minimum ratio of precision of 1:10,000 (Class A). Field work was performed from 11/29/23 to 1/3/24, and all coordinates are based on NAD83/2011; That this survey was performed to meet the requirements of 21NCAC 56.1600 as applicable.

This 5th day of January, 2024.

Designed by  
  
Professional Land Surveyor L-5298

PROJECT REFERENCE NO.	SHEET NO.
U-5108	RW10A
<b>Location and Surveys</b>	
	
<small>Dewberry Engineers Inc. 2000 West Center Street, Suite 100 Charlotte, NC 28208 Phone: 704.526.8918 Fax: 704.526.8917 www.dewberry.com NCELS # 49089</small>	
PROJECT SURVEYOR	
	
Designed by  Professional Land Surveyor L-5298	
DOCUMENT NOT CONSIDERED FINAL UNLESS ALL SIGNATURES COMPLETED	

**NOTES:**

1. IF FURTHER INFORMATION REGARDING PROJECT CONTROL IS NEEDED PLEASE CONTACT THE LOCATION AND SURVEYS UNIT.
2. PROJECT CONTROL WAS ESTABLISHED USING GNSS, THE GLOBAL NAVIGATION SATELLITE SYSTEM.
3. RIGHT OF WAY MONUMENTATION ESTABLISHED 11/29/23 TO 1/3/24.