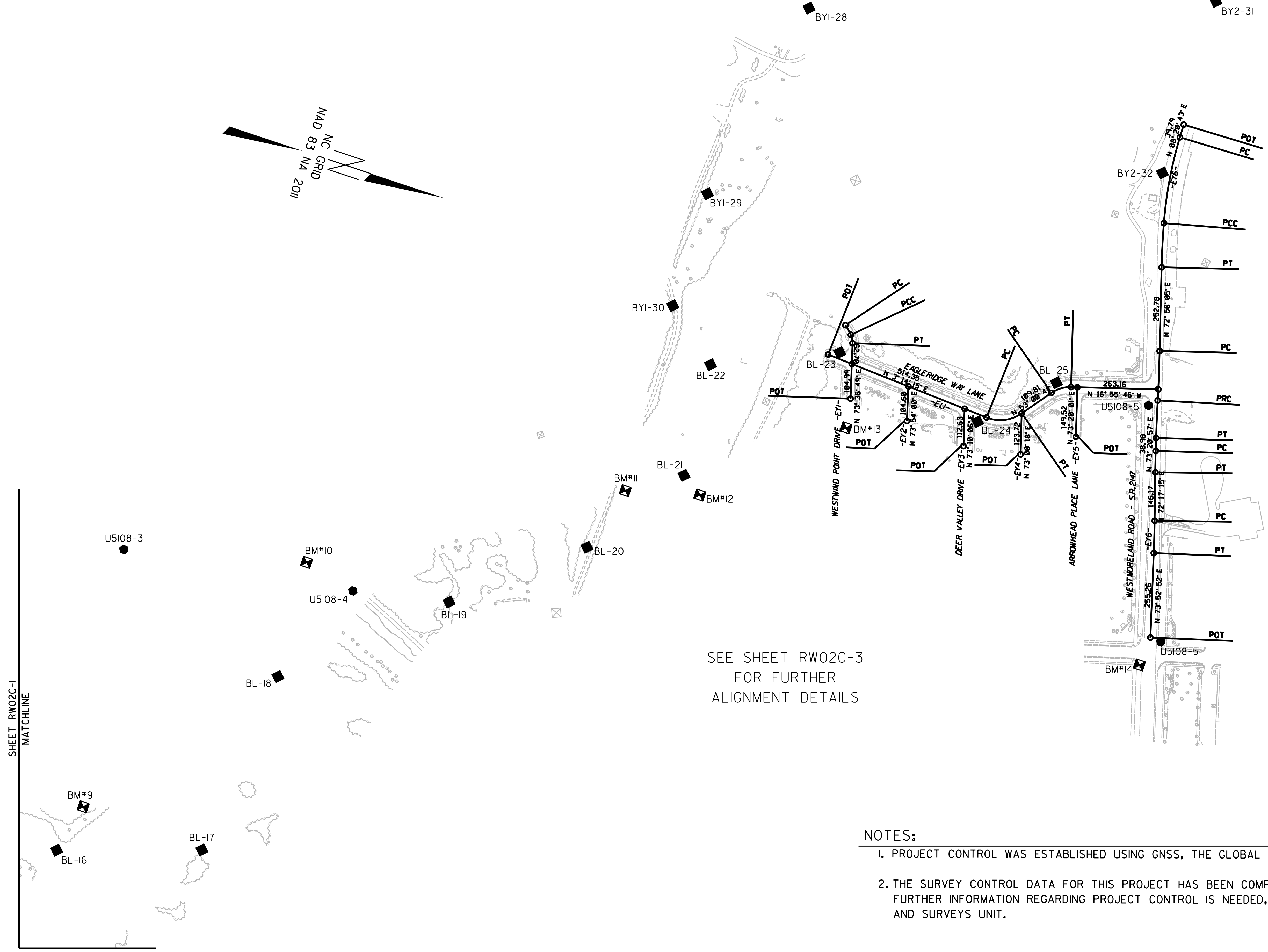
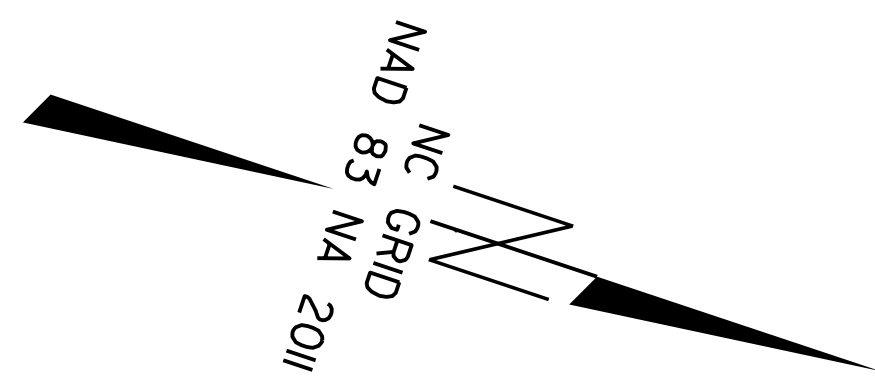


SURVEY CONTROL SHEET

W/ EXISTING CENTERLINE ALIGNMENTS PRIOR TO CONSTRUCTION



SEE SHEET RW02C-3
FOR FURTHER
ALIGNMENT DETAILS

NOTES:

1. PROJECT CONTROL WAS ESTABLISHED USING GNSS, THE GLOBAL NAVIGATION SATELLITE SYSTEM.
2. THE SURVEY CONTROL DATA FOR THIS PROJECT HAS BEEN COMPILED FROM VARIOUS SOURCES. IF FURTHER INFORMATION REGARDING PROJECT CONTROL IS NEEDED, PLEASE CONTACT THE LOCATION AND SURVEYS UNIT.

REVISIONS

SHEET RW02C-1
MATCHLINE

31-OCT-2018 14:25
 C:\work\k\06615.6109.00 - u5108-con-twt3\dwg\Microstation\U5108_1s-rw02c-2.dgn
 Walker AT TWT1710