

-Y6-

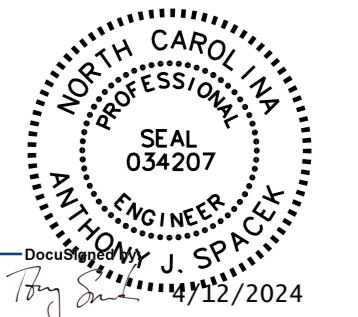
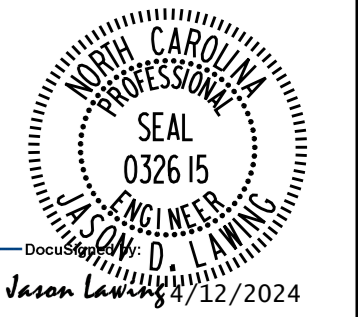
PI Sta 4+95.84    PI Sta 12+80.24  
 $\Delta = 0^\circ 46' 51.0" (LT)$      $\Delta = 20^\circ 58' 15.1" (LT)$   
 $D = 2' 17.306'$      $D = 3' 39' 12.9"$   
 $L = 34.07'$      $L = 573.98'$   
 $T = 17.04'$      $T = 290.24'$   
 $R = 2,500.00'$      $R = 1,568.21'$   
 SE = MATCH EXIST.    SE = 6%  
 RO = MATCH EXIST.    RO = 300  
 DS = 50 MPH    DS = 50 MPH

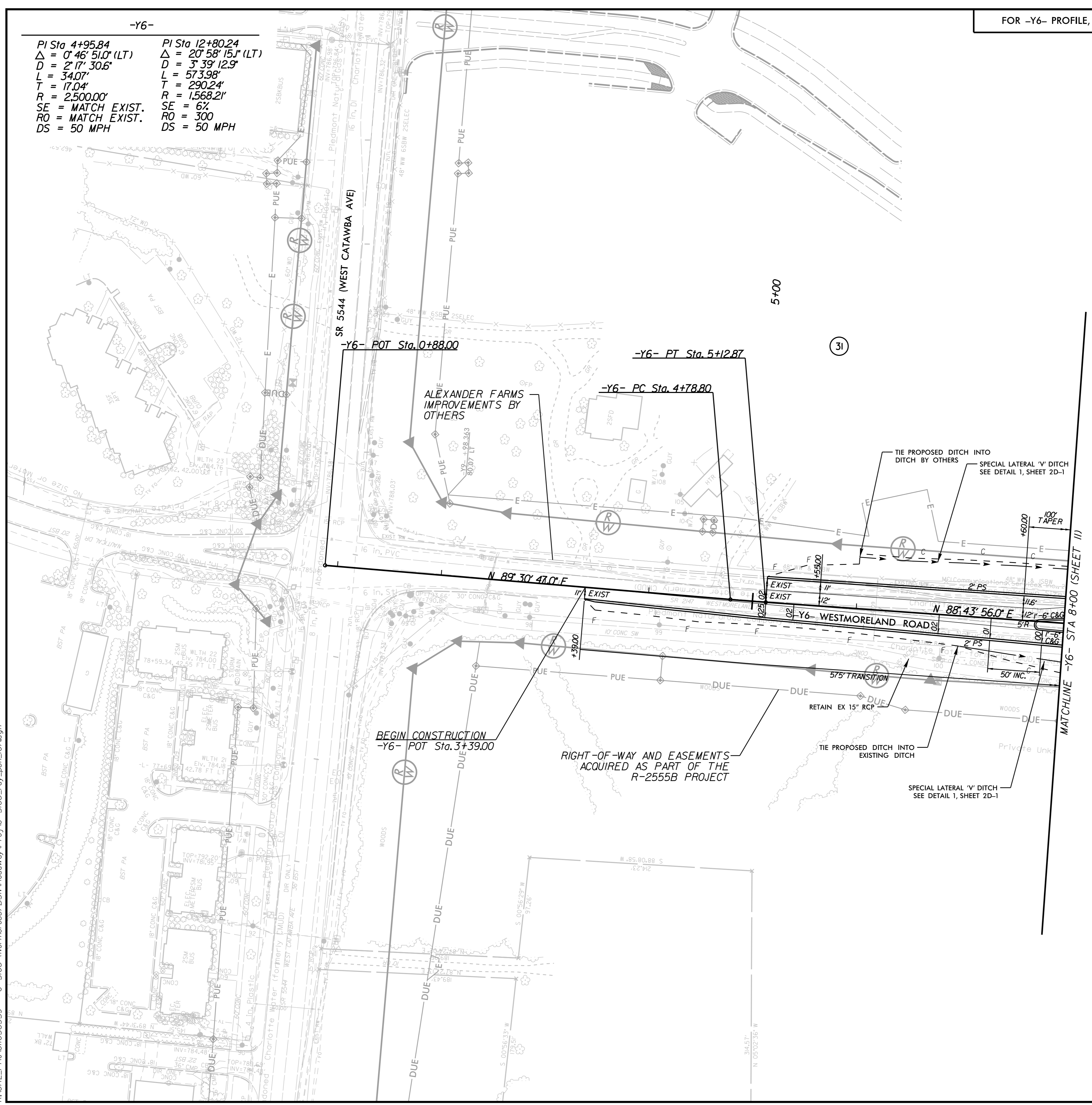
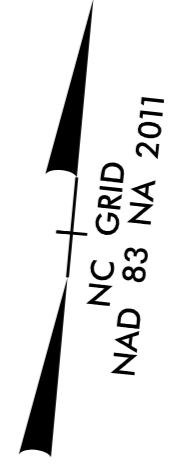
FOR -Y6- PROFILE, SEE SHEET 17

# Kimley Horn

NC LICENSE #F-0102  
 200 SOUTH TRYON, SUITE 200  
 CHARLOTTE, N.C. 28202

RIGHT-OF-WAY REV.  
CONST. REV.

PROJECT REFERENCE NO. U-5108	SHEET NO. 10A
RW SHEET NO.	
ROADWAY DESIGN ENGINEER	HYDRAULICS ENGINEER
 ANTHONY J. SPACKE 12/2024	 JASON LEWIS 12/2024
<b>DOCUMENT NOT CONSIDERED FINAL UNLESS ALL SIGNATURES COMPLETED</b>	



4/12/2024  
 K:\CHL\_PRA\01036359 - U-5108 (Northcross) DSN\Roadway\Proj\U-5108\_rdy\_psh\_10A.dgn