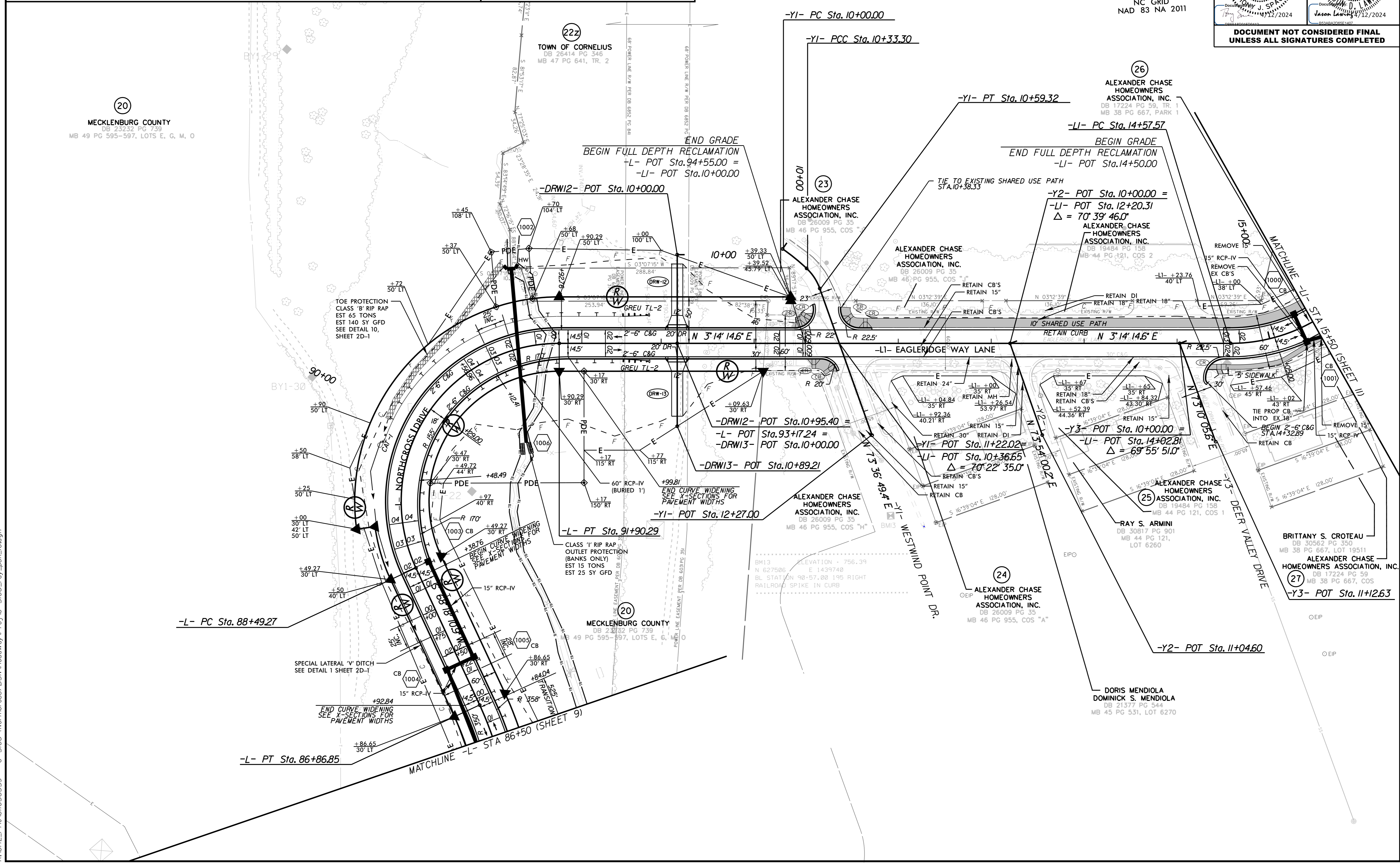
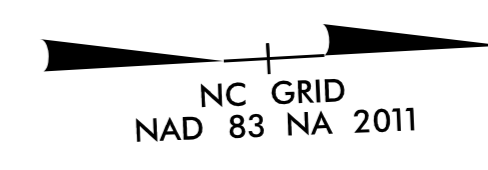


-L-	-LI-	-YI-	-YI-
PI Sta 91+15.66	PI Sta 15+81.77	PI Sta 10+16.68	PI Sta 10+46.56
$\Delta = 114^{\circ} 56' 03.7" (RT)$	$\Delta = 69^{\circ} 12' 48.7" (LT)$	$\Delta = 8^{\circ} 28' 49.9" (RT)$	$\Delta = 27^{\circ} 05' 58.4" (RT)$
D = 33' 42" 12.2"	D = 31' 49" 51.6"	D = 25' 27" 53.2"	D = 104' 10" 26.9"
L = 341.02'	L = 217.44'	L = 33.30'	L = 26.01'
T = 266.51'	T = 124.21'	T = 16.68'	T = 13.25'
R = 170.00'	R = 180.00'	R = 225.00'	R = 55.00'
SE = 4%	SE = NC	SE = EXIST	SE = EXIST
RO = 100'	RO = NONE	RO = EXIST	RO = EXIST
DS = 25 MPH	DS = 20 MPH		

FOR -L- PROFILE, SEE SHEET 16
 FOR -LI- PROFILE, SEE SHEET 16

Kimley Horn
 NC LICENSE #F-0102
 200 SOUTH TRYON, SUITE 200
 CHARLOTTE, N.C. 28202
 RIGHT-OF-WAY REV.
 CONST. REV.

PROJECT REFERENCE NO.	SHEET NO.
U-5108	10
RW SHEET NO.	
ROADWAY DESIGN ENGINEER	HYDRAULICS ENGINEER
Document No: 20240412/2024	Document No: 20240412/2024
DOCUMENT NOT CONSIDERED FINAL UNLESS ALL SIGNATURES COMPLETED	



4/12/2024
 K:\CHL_PRA\01036359 - U-5108 (Northcross) DSW\Roadway\Proj\U-5108_rdy_psh_10.dgn