

-L-
 PI Sta 61+08.65
 $\Delta = 55^\circ 36' 10.2" (LT)$
 $D = 10' 44' 58.8"$
 $L = 517.25'$
 $T = 281.04'$
 $R = 533.00'$
 $SE = 4\%$
 $RO = 112'$
 $DS = 40 MPH$

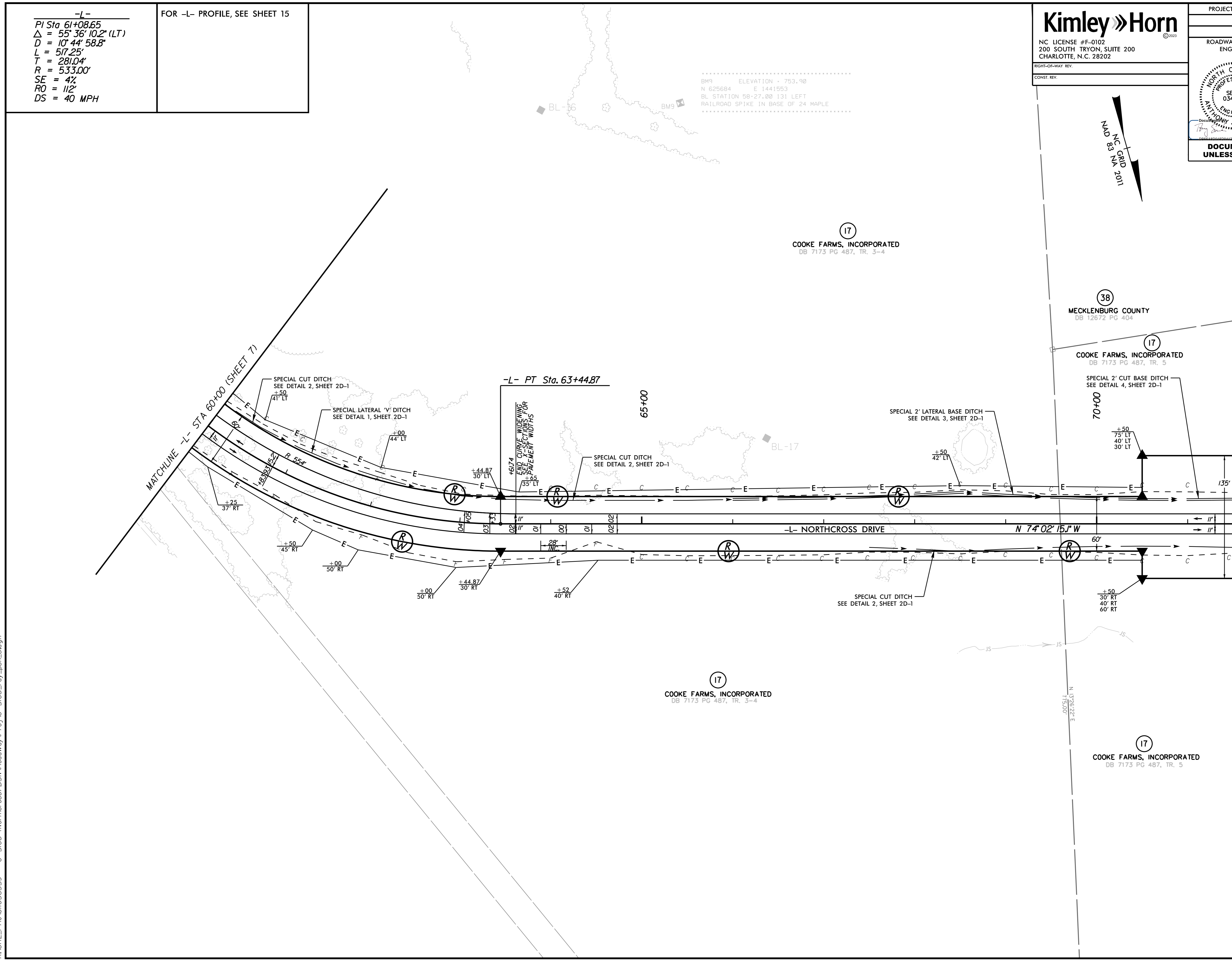
FOR -L- PROFILE, SEE SHEET 15

Kimley»Horn

NC LICENSE #F-0102
 200 SOUTH TRYON, SUITE 200
 CHARLOTTE, N.C. 28202

RIGHT-OF-WAY REV.
 CONST. REV.

PROJECT REFERENCE NO. U-5108	SHEET NO. 8
ROADWAY DESIGN ENGINEER	HYDRAULICS ENGINEER
DOCUMENT NOT CONSIDERED FINAL UNLESS ALL SIGNATURES COMPLETED	



4/12/2024
 K:\CHL\PR\01036359 - U-5108 (Northcross) DSW\Roadway\Proj\U-5108_rdy_psh_b.dgn