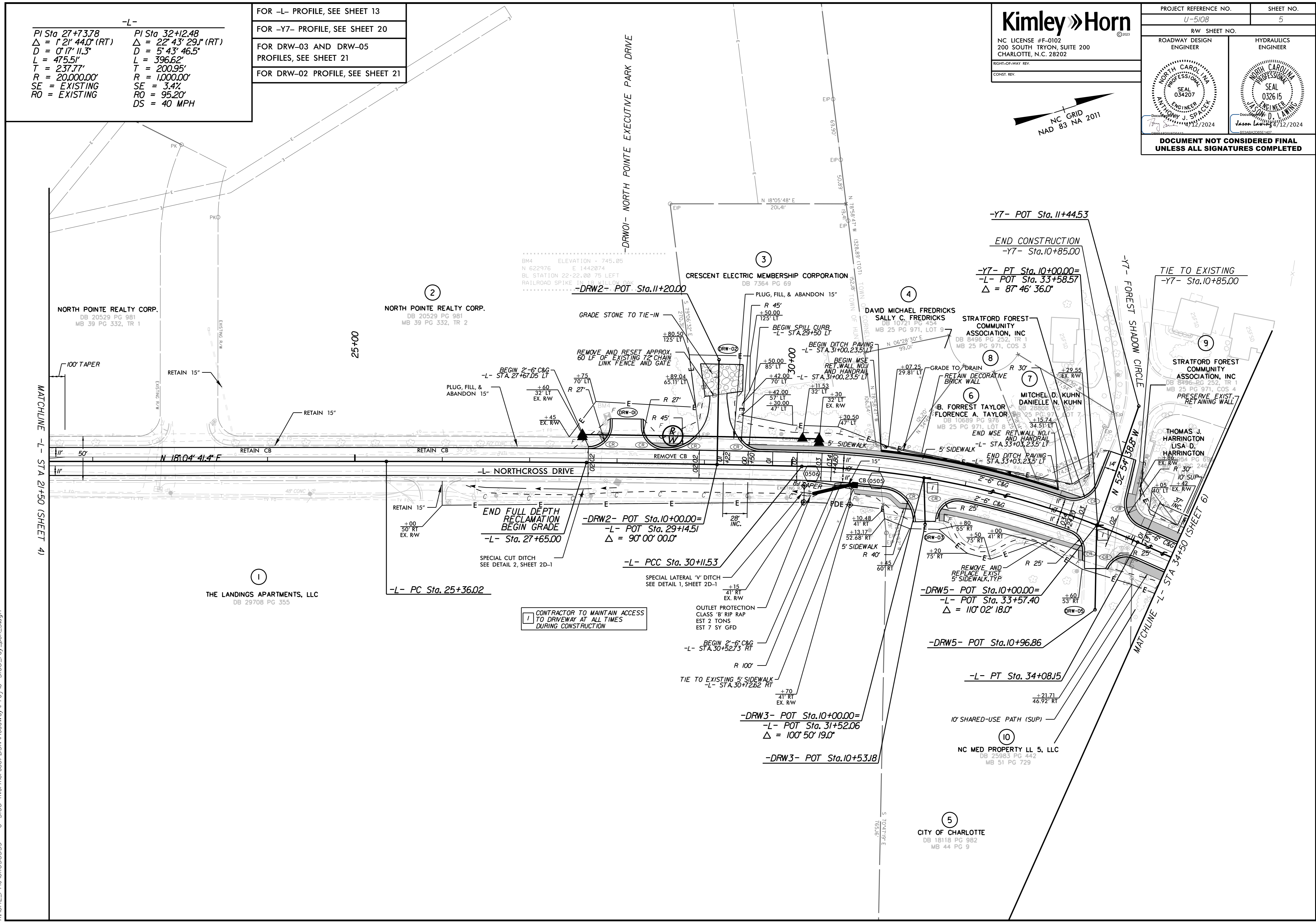
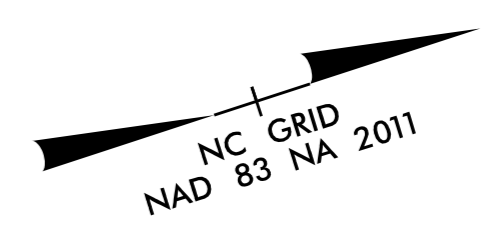


-L-	
PI Sta 27+73.78	PI Sta 32+12.48
$\Delta = 1' 21' 44.0''$ (RT)	$\Delta = 22' 43' 29.1''$ (RT)
D = 0' 17' 11.3"	D = 5' 43' 46.5"
L = 475.51'	L = 396.62'
T = 237.77'	T = 200.95'
R = 20,000.00'	R = 1,000.00'
SE = EXISTING	SE = 3.4%
RO = EXISTING	RO = 95.20'
	DS = 40 MPH

FOR -L- PROFILE, SEE SHEET 13
 FOR -Y7- PROFILE, SEE SHEET 20
 FOR DRW-03 AND DRW-05
 PROFILES, SEE SHEET 21
 FOR DRW-02 PROFILE, SEE SHEET 21

Kimley Horn
 NC LICENSE #F-0102
 200 SOUTH TRYON, SUITE 200
 CHARLOTTE, N.C. 28202
 RIGHT-OF-WAY REV.
 CONST. REV.

PROJECT REFERENCE NO.	SHEET NO.
U-5108	5
RW SHEET NO.	
ROADWAY DESIGN ENGINEER	HYDRAULICS ENGINEER
Doc. No. 20240412/2024	Doc. No. 20240412/2024
DOCUMENT NOT CONSIDERED FINAL UNLESS ALL SIGNATURES COMPLETED	



MATCHLINE -L- STA 21+50 (SHEET 4)

MATCHLINE -L- STA 34+50 (SHEET 6)

1 CONTRACTOR TO MAINTAIN ACCESS TO DRIVEWAY AT ALL TIMES DURING CONSTRUCTION

4/12/2024 K:\CHL_PRA\01036359 - U-5108 (Northcross) DSW_Roadway_Pro\U-5108_rdy_psh_5.dgn