

**BRIDGE INSPECTION RECORD AND SUMMARY  
FOR SHORED STRUCTURES OR STRUCTURES  
WITH TEMPORARY REPAIRS MADE TO KEEP  
A BRIDGE OPEN**

BRIDGE: **270008** COUNTY: **Dare** DATE: **5/7/2012**

THE FOLLOWING S. I. & A ITEMS ARE TO BE CODED TO REFLECT THE FACT THAT THE STRUCTURE IS SHORED OR HAS HAD TEMPORARY REPAIRS MADE TO KEEP THE BRIDGE OPEN :

	<u>CODE</u>	<u>BY</u>
S I & A ITEM 103 - TEMPORARY STRUCTURE DESIGNATION	T	TSE
S I & A ITEM 59 - SUPERSTRUCTURE		TSE
S I & A ITEM 60 - SUBSTRUCTURE	3	TSE
S I & A ITEM 64 OPERATING RATING	HS	BY: _____
S I & A ITEM 66 - INVENTORY RATING	HS	BY: _____

*5/7/12*

**COMMENTS**

Many piles are encased with concrete.

*Temporary Repairs*

*RETAIN TEMP - T MS 02/02/16*



NC DEPARTMENT OF TRANSPORTATION  
 DIVISION OF HIGHWAYS  
 STRUCTURE MANAGEMENT UNIT

ATTENTION: PARS FOR RAILINGS HAVE BEEN ADDRESSED. PARS ISSUED FOR JOISTS, CAPS, AND A HOLE IN THE DECK. CHANGES MADE TO DECK AND WEARING SURFACE MEASUREMENTS.

# Structure Safety Report

## 2 Year Complete Topside and Underwater Element Inspection

STRUCTURE NUMBER: 270008      SAP STRUCTURE NO: 0280008      FHWA STRUCTURE NO: 00000000550008

DIVISION: 1      COUNTY: DARE      INSPECTION DATE: 06/01/2023      FREQUENCY: 24 MONTHS

FACILITY CARRIED: NC12      MILE POST: 71

LOCATION: 0.1MI S. JCT SR 1248

FEATURE INTERSECTED: THE SLASH

LATITUDE: 35° 13' 5.64"      LONGITUDE: 75° 41' 19.52"

SUPERSTRUCTURE: REINF CONC FLOOR ON TIM JOISTS

SUBSTRUCTURE: E.BTS&BTS:TIM.CAPS/ENCASED TIM.PILES @ VAR.CTS.

SPANS: 5 SPANS. SEE SPAN PROFILE SHEET FOR SPAN DETAILS

FRACTURE CRITICAL     TEMPORARY SHORING     SCOUR CRITICAL     SCOUR PLAN OF ACTION

GRADES: (Inspector/NBI Coding)    DECK 7/7    SUPERSTRUCTURE 5/5    SUBSTRUCTURE 3/3    CULVERT N/N

POSTED SV: Not Posted      POSTED TTST: Not Posted

OTHER SIGNS PRESENT: 4-DELINEATORS



Sign noticed issued for	Number Required
<u>NO</u> <b>WEIGHT LIMIT</b>	<u>0</u>
<u>NO</u> <b>DELINEATORS</b>	<u>0</u>
<u>NO</u> <b>NARROW BRIDGE</b>	<u>0</u>
<u>NO</u> <b>ONE LANE BRIDGE</b>	<u>0</u>
<u>NO</u> <b>LOW CLEARANCE</b>	<u>0</u>

DIRECTION OF INSPECTION      S-N

DIRECTION MATCHES PLANS      \_\_\_\_\_

LOOKING NORTH

INSPECTED BY Ben Presgrave	SIGNATURE 	ASSISTED BY Billy Cox and Christian Anderson
-------------------------------	---------------	---

NATIONAL BRIDGE INVENTROY ----- STRUCTURE INVENTORY AND APPRAISAL

08/22/2023

**IDENTIFICATION**

(1) STATE NAME NORTH CAROLINA BRIDGE 270008  
 (8) STRUCTURE NUMBER (FEDERAL) 0550008  
 (5) INVENTORY ROUTE (ON/UNDER) ON 131000120  
 (2) STATE HIGHWAY DEPARTMENT DISTRICT 1  
 (3) COUNTY CODE (FEDERAL) 55 (4) PLACE CODE 00000  
 (6) FEATURE INTERSECTED THE SLASH  
 (7) FACILITY CARRIED NC12  
 (9) LOCATION 0.1MI S. JCT SR 1248  
 (11) MILEPOINT 71.0  
 (12) BASE HIGHWAY NETWORK 0  
 (13) LRS INVENTORY ROUTE & SUBROUTE  
 (16) LATITUDE 35° 13' 5.64" (17) LONGITUDE 75° 41' 19.52"  
 (98) BORDER BRIDGE STATE CODE PERCENT SHARED  
 (99) BORDER BRIDGE STRUCTURE NUMBER

SUFFICIENCY RATING 31.74  
 STATUS = Structurally Deficient

**CLASSIFICATION**

**CODE**

(112) NBIS BRIDGE SYSTEM YES  
 (104) HIGHWAY SYSTEM Inventory Route is on NHS 1  
 (26) FUNCTIONAL CLASS Rural Major Collector 07  
 (100) STRAHNET HIGHWAY Not a STRAHNET Route 0  
 (101) PARALLEL STRUCTURE No parallel structure exists N  
 (102) DIRECTION OF TRAFFIC 2-way traffic 2  
 (103) TEMPORARY STRUCTURE Temporary Structure or Conditions T  
 (110) DESIGNATED NATIONAL NETWORK - on national network for trucks 0  
 (20) TOLL On Free Road 3  
 (21) MAINT - 01  
 (22) OWNER - 01  
 (37) HISTORICAL SIGNIFICANCE - 5

**STRUCTURE TYPE AND MATERIAL**

(43) STRUCTURE TYPE MAIN Wood or Timber  
 TYPE Stringer/Multi-beam or girder CODE 702  
 (44) STRUCTURE TYPE APPROACH  
 TYPE CODE  
 (45) NUMBER OF SPANS IN MAIN UNIT 5  
 (46) NUMBER OF SPANS IN APPROACH 0  
 (107) DECK STRUCTURE TYPE CODE 1  
 (108) WEARING SURFACE/PROTECTIVE SYSTEM  
 (A) TYPE OF WEARING SURFACE CODE 5  
 (B) TYPE OF MEMBRANE CODE 3  
 (C) TYPE OF DECK PROTECTION CODE 0

**CONDITION**

**CODE**

(58) DECK 7  
 (59) SUPERSTRUCTURE 5  
 (60) SUBSTRUCTURE 3  
 (61) CHANNEL & CHANNEL PROTECTION 7  
 (62) CULVERTS N

**LOAD RATING AND POSTING**

**CODE**

(31) DESIGN LOAD Unknown 0  
 (63) OPERATING RATING METHOD - Allowable Stress 2  
 (64) OPERATING RATING - HS-26 46  
 (65) INVENTORY RATING METHOD - 2  
 (66) INVENTORY RATING HS-17 30  
 (70) BRIDGE POSTING No Posting Required 5  
 (41) STRUCTURE OPEN, POSTED, OR CLOSED D

**AGE AND SERVICE**

(27) YEAR BUILT 1956  
 (106) YEAR RECONSTRUCTED 1960  
 (42) TYPE OF SERVICE ON - Highway - Pedestrian  
 OFF - Waterway CODE 55  
 (28) LANES ON STRUCTURE 2 LANES UNDER STRUCTURE 0  
 (29) AVERAGE DAILY TRAFFIC 3300  
 (30) YEAR OF ADT 2021 (109) TRUCK ADT PCT 7  
 (19) BYPASS OR DETOUR LENGTH 1.0

**APPRAISAL**

**CODE**

(67) STRUCTURAL EVALUATION 3  
 (68) DECK GEOMETRY 3  
 (69) UNDERCLEARANCES, VERT & HORIZ N  
 (71) WATERWAY ADEQUACY 7  
 (72) APPROACH ROADWAY ALIGNMENT 8  
 (36) TRAFFIC SAFETY FEATURES 0000  
 (113) SCOUR CRITICAL BRIDGES 8

**GEOMETRIC DATA**

(48) LENGTH OF MAXIMUM SPAN 17.0  
 (49) STRUCTURE LENGTH 86.0  
 (50) CURB OR SIDEWALK: LEFT 0.0 RIGHT 6.2  
 (51) BRIDGE ROADWAY WIDTH, CURB TO CURB 27.7  
 (52) DECK WIDTH OUT TO OUT 34.5  
 (32) APPROACH ROADWAY WITH (W/ SHOULDERS) 25.0  
 (33) BRIDGE MEDIAN No median CODE 0  
 (34) SKEW 0 (35) STRUCTURE FLARED 0  
 (10) INVENTORY ROUTE MIN VERT CLEAR 999.9  
 (47) INVENTORY ROUTE TOTAL HORIZ CLEAR 27.7  
 (53) MIN VERT CLEAR OVER BRIDGE RDWY 999.9  
 (54) MIN VERT UNDERCLEAR: REFERENCE 0.0  
 (55) MIN LAT UNDERCLEARANCE RT: REFERENCE N 0.0  
 (56) MIN LAT UNDERCLEARANCE LT: 0.0

**PROPOSED IMPROVEMENTS**

(75) TYPE OF WORK CODE  
 (76) LENGTH OF STRUCTURE IMPROVEMENT  
 (94) BRIDGE IMPROVEMENT COST  
 (95) ROADWAY IMPROVEMENT COST  
 (96) TOTAL PROJECT COST  
 (97) YEAR OF IMPROVEMENT COST ESTIMATE  
 (114) FUTURE ADT 6,600 YEAR OF FUTURE ADT 2040

**NAVIGATION DATA**

(38) NAVIGATION CONTROL - CODE 0  
 (111) PIER PROTECTION CODE  
 (39) NAVIGATION VERTICAL CLEARANCE 0.0  
 (116) VERT - LIFT BRIDGE NAV MIN VERT CLEAR 0.0  
 (40) NAVIGATION HORIZONTAL CLEARANCE 0.0

**INSPECTION**

(90) INSPECTION DATE 06/23 (91) FREQUENCY 24  
 (92) CRITICAL FEATURE INSPECTION (93) CFI DATE  
 A) FRACTURE CRIT DETAIL A)  
 B) UNDERWATER INSP 60 B) 06/23  
 C) OTHER SPECIAL INSP C)  
 SCOUR

## Superstructure Build Details

Span Number 1

Span Length 17.500

Skew 90.000

Number of Items	Type of Component	Element Name	Quantity	Protective System Applied	Quantity (Sq Ft)
2	Concrete Railing	Reinforced Concrete Bridge Railing	36 Feet		
2	Delineator	Warning Signs	2 Each		
20	Timber Joist	Timber Open Girder/Beam	360 Feet		
1	Reinforced Concrete Deck	Reinforced Concrete Deck	621 Square Feet		
1	Epoxy Wearing Surface	Wearing Surface	438 Square Feet		

Span Number 2

Span Length 17.100

Skew 90.000

Number of Items	Type of Component	Element Name	Quantity	Protective System Applied	Quantity (Sq Ft)
1	Asphalt Wearing Surface	Wearing Surface	428 Square Feet		
2	Concrete Railing	Reinforced Concrete Bridge Railing	36 Feet		
1	Standard Joint	Pourable Joint Seal	35 Feet		
1	Reinforced Concrete Deck	Reinforced Concrete Deck	590 Square Feet		
22	Timber Joist	Timber Open Girder/Beam	418 Feet		

Span Number 3

Span Length 16.900

Skew 90.000

Number of Items	Type of Component	Element Name	Quantity	Protective System Applied	Quantity (Sq Ft)
2	Concrete Railing	Reinforced Concrete Bridge Railing	34 Feet		
1	Epoxy Wearing Surface	Wearing Surface	423 Square Feet		
1	Reinforced Concrete Deck	Reinforced Concrete Deck	584 Square Feet		
20	Timber Joist	Timber Open Girder/Beam	360 Feet		
1	Standard Joint	Pourable Joint Seal	35 Feet		

Span Number 4

Span Length 17.100

Skew 90.000

Number of Items	Type of Component	Element Name	Quantity	Protective System Applied	Quantity (Sq Ft)
2	Concrete Railing	Reinforced Concrete Bridge Railing	36 Feet		

## Superstructure Build Details

1	Epoxy Wearing Surface	Wearing Surface	428	Square Feet		
1	Reinforced Concrete Deck	Reinforced Concrete Deck	590	Square Feet		
22	Timber Joist	Timber Open Girder/Beam	418	Feet		
1	Standard Joint	Pourable Joint Seal	35	Feet		

**Span Number** 5

**Span Length** 17.400

**Skew** 90.000

Number of Items	Type of Component	Element Name	Quantity	Protective System Applied	Quantity (Sq Ft)
1	Epoxy Wearing Surface	Wearing Surface	435	Square Feet	
1	Reinforced Concrete Deck	Reinforced Concrete Deck	601	Square Feet	
20	Timber Joist	Timber Open Girder/Beam	380	Feet	
2	Concrete Railing	Reinforced Concrete Bridge Railing	36	Feet	
1	Standard Joint	Pourable Joint Seal	35	Feet	
2	Delineator	Warning Signs	2	Each	

# Structure Element Scoring

Structure Number: 270008

Inspection Date 6/1/2023

Element Number	Parent Number	Element Name	Location	Total Quantity	Level 1 Quantity	Level 2 Quantity	Level 3 Quantity	Level 4 Quantity
12		Reinforced Concrete Deck	Deck	2,986	2,985	0	1	0
111		Timber Open Girder/Beam	Beam	1,936	0	1,932	4	0
218		Other Abutments	Abutments	40	0	40	0	0
228		Timber Pile	Piles and Columns	36	0	0	36	0
235		Timber Pier Cap	Caps	210	0	203	7	0
301		Pourable Joint Seal	Expansion Joints	140	0	0	140	0
331		Reinforced Concrete Bridge Railing	Bridge Rail	178	0	178	0	0
510		Wearing Surface	Wearing Surfaces	2,152	0	2,152	0	0
602		Warning Signs	Ground Mounted Signs	4	4	0	0	0

# Summary of Maintenance Needs

## Maintenance By Defect

Structure Number: **270008**

Inspection Date: **06/01/2023**

<b>MMS Code</b>	<b>Element Name</b>	<b>Defect Name</b>	<b>Recommended Quantity</b>
3326	Reinforced Concrete Deck	Delamination/Spall	1 Square Feet
3304	Timber Open Girder/Beam	Decay/Section Loss	4 Feet
3344	Timber Pile	Connection	1 Each
3344	Timber Pile	Check/Shake	136 Each
3344	Timber Pier Cap	Decay/Section Loss	6 Feet
3310	Pourable Joint Seal	Leakage	140 Feet
3318	Reinforced Concrete Bridge Railing	Delamination/Spall	18 Feet
2816	Wearing Surface	Crack (Wearing Surface)	142 Square Feet

## Element Structure Maintenance Quantities

Structure Number: **270008**

Inspection Date **06/01/2023**

Location	MMS Code	Description	Maint Quantity	Total Quantity	Severe Quantity	Poor Quantity	Fair Quantity	Good Quantity
Beam	3304	Maintenance of Timber of Superstructure Components	4	1936	0.000	4.000	1932.000	0.000
Bridge Rail	3318	Maintenance of Concrete Bridge Rail	18	178	0.000	0.000	178.000	0.000
Deck	3326	Maintenance of Concrete Deck	1	2986	0.000	1.000	0.000	2985.000
Expansion Joints	3310	Maintenance of Standard Bridge Expansion Joints	140	140	0.000	140.000	0.000	0.000
Ground Mounted Signs	3250	Install or Replace Ground Mounted Signs	0	4	0.000	0.000	0.000	4.000
Wearing Surfaces	2816	Asphalt Surface Repair	28	428	0.000	0.000	428.000	0.000
Wearing Surfaces	2816	Asphalt Surface Repair	114	1724	0.000	0.000	1724.000	0.000
Abutments	3350	Maintenance of Concrete Wings and Wall	0	40	0.000	0.000	40.000	0.000
Caps	3344	Maintenance To Timber Substructure	6	210	0.000	7.000	203.000	0.000
Piles and Columns	3344	Maintenance To Timber Substructure	137	36	0.000	36.000	0.000	0.000



# Priority Actions Request

Structure Number 270008

## Span1

3304	Beam 3	Timber Joist		
Priority Level	Defect Type	Quantity	Defect Description	
2	Decay/Section Loss	1	Span 1 Beam 3: DECAYED ON END OVER BENT 1, 4 INCHES TALL X 6 INCHES WIDE X 5 INCHES DEEP.	

3304	Beam 10	Timber Joist		
Priority Level	Defect Type	Quantity	Defect Description	
2	Decay/Section Loss	1	Span 1 Beam 10: DECAYED ON END OVER BENT 1, 4 INCHES TALL X 6 INCHES WIDE X 5 INCHES DEEP.	

3304	Beam 11	Timber Joist		
Priority Level	Defect Type	Quantity	Defect Description	
2	Decay/Section Loss	1	Span 1 Beam 11: DECAYED ON END OVER BENT 1, 5 INCHES TALL X 6 INCHES WIDE X 6 INCHES DEEP.	

3304	Beam 13	Timber Joist		
Priority Level	Defect Type	Quantity	Defect Description	
2	Decay/Section Loss	1	Span 1 Beam 13: DECAYED ON END OVER BENT 1, 4 INCHES TALL X 6 INCHES WIDE X 5 INCHES DEEP.	

## Span3

3326	Deck	Reinforced Concrete Deck		
Priority Level	Defect Type	Quantity	Defect Description	
2	Delamination/Spall	1	Span 3 Deck: 4 INCH DIAMETER HOLE THROUGH DECK IN SOUTH BOUND LANE.	

## Bent 1

3344	Cap	Timber Pier Cap		
Priority Level	Defect Type	Quantity	Defect Description	
2	Decay/Section Loss	1	End Bent 1 Cap 1: PAR: EAST END DECAYED FROM END BACK 16 INCHES, 5 INCHES TALL X 2 INCHES WIDE .	
2	Decay/Section Loss	1	End Bent 1 Cap: PAR: PEDESTRAIN WALKWAY SUBCAP HAS DECAY ON THE EAST END CENTER OF CAP. 8 INCH DIAMETER X 4 INCHES DEEP	

3344	Cap	Timber Pier Cap		
------	-----	-----------------	--	--

# Priority Actions Request

Structure Number 270008

Priority Level	Defect Type	Quantity	Defect Description
2	Decay/Section Loss	2	Bent 1 Cap: SUBCAP HAS DECAY ON EAST END TOP CORNER, 4 INCH DIAMETER X 14 INCHES DEEP

3344 Pile 1 Timber Pile

Priority Level	Defect Type	Quantity	Defect Description
2	Connection	1	Bent 1 Pile 1: PAR: X-BRACING DECAYED AND DETACHED FROM PILE.

## Bent 3

3344 Cap Timber Pier Cap

Priority Level	Defect Type	Quantity	Defect Description
2	Decay/Section Loss	1	Bent 3 Cap: PAR: PEDESTRAIN WALKWAY SUBCAP HAS DECAY ON EAST END IN CENTER. 9 INCH DIAMETER X 9 INCHES DEEP.

## Bent 4

3344 Cap Timber Pier Cap

Priority Level	Defect Type	Quantity	Defect Description
2	Decay/Section Loss	1	Bent 4 Cap: PAR: BENT 4 SUBCAP WEST END HAS AN AREA OF DECAY 6 INCH DIAMETER X 6 INCHES DEEP.
2	Decay/Section Loss	1	Bent 4 Cap: PAR: EAST END OF CAP AT CENTER, DECAYED AREA 8 INCH DIAMETER X 13 INCHES DEEP.

## Element Condition and Maintenance Data

Structure Number: 270008

Inspection Date: 06/01/2023

Span 1		Beam 1				
Timber Joist						
Element Number	Element Name	Total Qty	CS1 Qty	CS2 Qty	CS3 Qty	CS4 Qty
111	Timber Open Girder/Beam	18	0	18	0	0 Feet
Element Number	Defect Type	Defect Description		CS	CS Qty	Maint Qty
<input checked="" type="checkbox"/> 111	Check/Shake	CHECKS TO .25 INCH WIDE, WEATHERED, AND SOFT TO .50 INCH DEEP ON ENDS.		2	18	Feet
<b>General Comments</b>						

Span 1		Beam 2				
Timber Joist						
Element Number	Element Name	Total Qty	CS1 Qty	CS2 Qty	CS3 Qty	CS4 Qty
111	Timber Open Girder/Beam	18	0	18	0	0 Feet
Element Number	Defect Type	Defect Description		CS	CS Qty	Maint Qty
<input checked="" type="checkbox"/> 111	Check/Shake	CHECKS TO 0.125 INCH WIDE, SOFT TO .5 INCH DEEP ON ENDS.		2	18	Feet
<b>General Comments</b>						

Span 1		Beam 3				
Timber Joist						
Element Number	Element Name	Total Qty	CS1 Qty	CS2 Qty	CS3 Qty	CS4 Qty
111	Timber Open Girder/Beam	18	0	17	1	0 Feet
Element Number	Defect Type	Defect Description		CS	CS Qty	Maint Qty
<input checked="" type="checkbox"/> 111	Decay/Section Loss	PAR: DECAYED ON END OVER BENT 1, 4 INCHES TALL X 6 INCHES WIDE X 5 INCHES DEEP.		3	1	1 Feet
<input checked="" type="checkbox"/> 111	Check/Shake	CHECKS TO 0.125 INCH WIDE, SOFT TO .5 INCH DEEP ON ENDS.		2	17	Feet
<b>General Comments</b>						

Span 1		Beam 4				
Timber Joist						
Element Number	Element Name	Total Qty	CS1 Qty	CS2 Qty	CS3 Qty	CS4 Qty
111	Timber Open Girder/Beam	18	0	18	0	0 Feet
Element Number	Defect Type	Defect Description		CS	CS Qty	Maint Qty
<input checked="" type="checkbox"/> 111	Check/Shake	CHECKS TO 0.125 INCH WIDE, SOFT TO .5 INCH DEEP ON ENDS.		2	18	Feet
<b>General Comments</b>						

**Span 1** **Beam 5**  
**Timber Joist**

Element Number	Element Name	Total Qty	CS1 Qty	CS2 Qty	CS3 Qty	CS4 Qty
111	Timber Open Girder/Beam	18	0	18	0	0 Feet

---

Element Number	Defect Type	Defect Description	CS	CS Qty	Maint Qty
<input checked="" type="checkbox"/> 111	Check/Shake	CHECKS TO 0.125 INCH WIDE, SOFT TO .5 INCH DEEP ON ENDS.	2	18	Feet

General Comments

**Span 1** **Beam 6**  
**Timber Joist**

Element Number	Element Name	Total Qty	CS1 Qty	CS2 Qty	CS3 Qty	CS4 Qty
111	Timber Open Girder/Beam	18	0	18	0	0 Feet

---

Element Number	Defect Type	Defect Description	CS	CS Qty	Maint Qty
<input checked="" type="checkbox"/> 111	Check/Shake	CHECKS TO 0.125 INCH WIDE, SOFT TO .5 INCH DEEP ON ENDS.	2	18	Feet

General Comments

**Span 1** **Beam 7**  
**Timber Joist**

Element Number	Element Name	Total Qty	CS1 Qty	CS2 Qty	CS3 Qty	CS4 Qty
111	Timber Open Girder/Beam	18	0	18	0	0 Feet

---

Element Number	Defect Type	Defect Description	CS	CS Qty	Maint Qty
<input checked="" type="checkbox"/> 111	Check/Shake	CHECKS TO 0.125 INCH WIDE, SOFT TO .5 INCH DEEP ON ENDS.	2	18	Feet

General Comments

**Span 1** **Beam 8**  
**Timber Joist**

Element Number	Element Name	Total Qty	CS1 Qty	CS2 Qty	CS3 Qty	CS4 Qty
111	Timber Open Girder/Beam	18	0	18	0	0 Feet

---

Element Number	Defect Type	Defect Description	CS	CS Qty	Maint Qty
<input checked="" type="checkbox"/> 111	Check/Shake	CHECKS TO 0.125 INCH WIDE, SOFT TO .5 INCH DEEP ON ENDS.	2	18	Feet

General Comments

**Span 1****Beam 9****Timber Joist**

Element Number	Element Name	Total Qty	CS1 Qty	CS2 Qty	CS3 Qty	CS4 Qty
111	Timber Open Girder/Beam	18	0	18	0	0 Feet

Element Number	Defect Type	Defect Description	CS	CS Qty	Maint Qty
<input checked="" type="checkbox"/> 111	Check/Shake	CHECKS TO 0.125 INCH WIDE, SOFT TO .5 INCH DEEP ON ENDS.	2	18	Feet

General Comments

**Span 1****Beam 10****Timber Joist**

Element Number	Element Name	Total Qty	CS1 Qty	CS2 Qty	CS3 Qty	CS4 Qty
111	Timber Open Girder/Beam	18	0	17	1	0 Feet

Element Number	Defect Type	Defect Description	CS	CS Qty	Maint Qty
<input checked="" type="checkbox"/> 111	Decay/Section Loss	PAR: DECAYED ON END OVER BENT 1, 4 INCHES TALL X 6 INCHES WIDE X 5 INCHES DEEP.	3	1	1 Feet
<input checked="" type="checkbox"/> 111	Check/Shake	CHECKS TO 0.125 INCH WIDE, SOFT TO .5 INCH DEEP ON ENDS.	2	17	Feet

General Comments

**Span 1****Beam 11****Timber Joist**

Element Number	Element Name	Total Qty	CS1 Qty	CS2 Qty	CS3 Qty	CS4 Qty
111	Timber Open Girder/Beam	18	0	17	1	0 Feet

Element Number	Defect Type	Defect Description	CS	CS Qty	Maint Qty
<input checked="" type="checkbox"/> 111	Decay/Section Loss	PAR: DECAYED ON END OVER BENT 1, 5 INCHES TALL X 6 INCHES WIDE X 6 INCHES DEEP.	3	1	1 Feet
<input checked="" type="checkbox"/> 111	Check/Shake	CHECKS TO 0.125 INCH WIDE, SOFT TO .5 INCH DEEP ON ENDS.	2	17	Feet

General Comments

**Span 1****Beam 12****Timber Joist**

Element Number	Element Name	Total Qty	CS1 Qty	CS2 Qty	CS3 Qty	CS4 Qty
111	Timber Open Girder/Beam	18	0	18	0	0 Feet

Element Number	Defect Type	Defect Description	CS	CS Qty	Maint Qty
<input checked="" type="checkbox"/> 111	Check/Shake	CHECKS TO 0.125 INCH WIDE, SOFT TO .5 INCH DEEP ON ENDS.	2	18	Feet

General Comments

**Span 1** **Beam 13**  
**Timber Joist**

Element Number	Element Name	Total Qty	CS1 Qty	CS2 Qty	CS3 Qty	CS4 Qty
111	Timber Open Girder/Beam	18	0	17	1	0 Feet

---

Element Number	Defect Type	Defect Description	CS	CS Qty	Maint Qty
<input checked="" type="checkbox"/> 111	Decay/Section Loss	PAR: DECAYED ON END OVER BENT 1, 4 INCHES TALL X 6 INCHES WIDE X 5 INCHES DEEP.	3	1	1 Feet
<input checked="" type="checkbox"/> 111	Check/Shake	CHECKS TO 0.125 INCH WIDE, SOFT TO .5 INCH DEEP ON ENDS.	2	17	Feet

General Comments

**Span 1** **Beam 14**  
**Timber Joist**

Element Number	Element Name	Total Qty	CS1 Qty	CS2 Qty	CS3 Qty	CS4 Qty
111	Timber Open Girder/Beam	18	0	18	0	0 Feet

---

Element Number	Defect Type	Defect Description	CS	CS Qty	Maint Qty
<input checked="" type="checkbox"/> 111	Check/Shake	CHECKS TO 0.125 INCH WIDE, SOFT TO .5 INCH DEEP ON ENDS.	2	18	Feet

General Comments

**Span 1** **Beam 15**  
**Timber Joist**

Element Number	Element Name	Total Qty	CS1 Qty	CS2 Qty	CS3 Qty	CS4 Qty
111	Timber Open Girder/Beam	18	0	18	0	0 Feet

---

Element Number	Defect Type	Defect Description	CS	CS Qty	Maint Qty
<input checked="" type="checkbox"/> 111	Check/Shake	CHECKS TO 0.125 INCH WIDE, SOFT TO .5 INCH DEEP ON ENDS.	2	18	Feet

General Comments

**Span 1** **Beam 16**  
**Timber Joist**

Element Number	Element Name	Total Qty	CS1 Qty	CS2 Qty	CS3 Qty	CS4 Qty
111	Timber Open Girder/Beam	18	0	18	0	0 Feet

---

Element Number	Defect Type	Defect Description	CS	CS Qty	Maint Qty
<input checked="" type="checkbox"/> 111	Check/Shake	CHECKS TO 0.125 INCH WIDE, SOFT TO .5 INCH DEEP ON ENDS.	2	18	Feet

General Comments

**Span 1****Beam 17****Timber Joist**

Element Number	Element Name	Total Qty	CS1 Qty	CS2 Qty	CS3 Qty	CS4 Qty
111	Timber Open Girder/Beam	18	0	18	0	0 Feet

Element Number	Defect Type	Defect Description	CS	CS Qty	Maint Qty
<input checked="" type="checkbox"/> 111	Check/Shake	CHECKS TO 0.125 INCH WIDE, SOFT TO .5 INCH DEEP ON ENDS.	2	18	Feet

General Comments

**Span 1****Beam 18****Timber Joist**

Element Number	Element Name	Total Qty	CS1 Qty	CS2 Qty	CS3 Qty	CS4 Qty
111	Timber Open Girder/Beam	18	0	18	0	0 Feet

Element Number	Defect Type	Defect Description	CS	CS Qty	Maint Qty
<input checked="" type="checkbox"/> 111	Check/Shake	CHECKS TO 0.125 INCH WIDE, SOFT TO .5 INCH DEEP ON ENDS.	2	18	Feet

General Comments

**Span 1****Beam 19****Timber Joist**

Element Number	Element Name	Total Qty	CS1 Qty	CS2 Qty	CS3 Qty	CS4 Qty
111	Timber Open Girder/Beam	18	0	18	0	0 Feet

Element Number	Defect Type	Defect Description	CS	CS Qty	Maint Qty
<input checked="" type="checkbox"/> 111	Check/Shake	CHECKS TO 0.125 INCH WIDE, SOFT TO .5 INCH DEEP ON ENDS.	2	18	Feet

General Comments

**Span 1****Beam 20****Timber Joist**

Element Number	Element Name	Total Qty	CS1 Qty	CS2 Qty	CS3 Qty	CS4 Qty
111	Timber Open Girder/Beam	18	0	18	0	0 Feet

Element Number	Defect Type	Defect Description	CS	CS Qty	Maint Qty
<input checked="" type="checkbox"/> 111	Check/Shake	CHECKS TO .25 INCH WIDE, WEATHERED, AND SOFT TO .50 INCH DEEP ON ENDS.	2	18	Feet

General Comments

**Span 1 Left Bridge Rail**  
**Concrete Railing**

Element Number	Element Name	Total Qty	CS1 Qty	CS2 Qty	CS3 Qty	CS4 Qty	
331	Reinforced Concrete Bridge Railing	18	0	18	0	0	Feet

Element Number	Defect Type	Defect Description	CS	CS Qty	Maint Qty	
<input checked="" type="checkbox"/> 331	Cracking (RC and Other)	RANDOM HAIRLINE CRACKS AND SCALING TO .125 INCH.	2			Feet
<input checked="" type="checkbox"/> 331	Delamination/Spall	CRACKED TO .062 INCH AND DELAMINATED ALONG INSIDE OF TOP RAIL X FULL LENGTH OF SPAN.	2	18	18	Feet
<input checked="" type="checkbox"/> 331	Patched Area	PATCHED AREAS ON RAIL POST 1, 2 AND 3.	2			Square Feet

General Comments

**Span 1 Right Bridge Rail**  
**Concrete Railing**

Element Number	Element Name	Total Qty	CS1 Qty	CS2 Qty	CS3 Qty	CS4 Qty	
331	Reinforced Concrete Bridge Railing	18	0	18	0	0	Feet

Element Number	Defect Type	Defect Description	CS	CS Qty	Maint Qty	
<input checked="" type="checkbox"/> 331	Cracking (RC and Other)	RANDOM HAIRLINE CRACKS AND SCALING TO .125 INCH.	2	18		Feet

General Comments

**Span 1 Wearing Surface**  
**Epoxy Wearing Surface**

Element Number	Element Name	Total Qty	CS1 Qty	CS2 Qty	CS3 Qty	CS4 Qty	
510	Wearing Surface	438	0	438	0	0	Square Feet

Element Number	Defect Type	Defect Description	CS	CS Qty	Maint Qty	
<input checked="" type="checkbox"/> 510	Crack (Wearing Surface)	CRACKED TO .50 INCH, SPALLED TO 3 INCHES WIDE X FULL WIDTH OF ROADWAY OVER END BENT 1.	2	438	28	Square Feet

General Comments

**Span 2 Beam 1**  
**Timber Joist**

Element Number	Element Name	Total Qty	CS1 Qty	CS2 Qty	CS3 Qty	CS4 Qty	
111	Timber Open Girder/Beam	19	0	19	0	0	Feet

Element Number	Defect Type	Defect Description	CS	CS Qty	Maint Qty	
<input checked="" type="checkbox"/> 111	Check/Shake	CHECKS TO .25 INCH WIDE, WEATHERED, AND SOFT TO .50 INCH DEEP ON ENDS.	2	19		Feet

General Comments



**Span 2** **Beam 2**  
**Timber Joist**

Element Number	Element Name	Total Qty	CS1 Qty	CS2 Qty	CS3 Qty	CS4 Qty
111	Timber Open Girder/Beam	19	0	19	0	0 Feet

---

Element Number	Defect Type	Defect Description	CS	CS Qty	Maint Qty
<input checked="" type="checkbox"/> 111	Check/Shake	CHECKS TO 0.125 INCH WIDE, SOFT TO .5 INCH DEEP ON ENDS.	2	19	Feet

General Comments

**Span 2** **Beam 3**  
**Timber Joist**

Element Number	Element Name	Total Qty	CS1 Qty	CS2 Qty	CS3 Qty	CS4 Qty
111	Timber Open Girder/Beam	19	0	19	0	0 Feet

---

Element Number	Defect Type	Defect Description	CS	CS Qty	Maint Qty
<input checked="" type="checkbox"/> 111	Check/Shake	CHECKS TO 0.125 INCH WIDE, SOFT TO .5 INCH DEEP ON ENDS.	2	19	Feet

General Comments

**Span 2** **Beam 4**  
**Timber Joist**

Element Number	Element Name	Total Qty	CS1 Qty	CS2 Qty	CS3 Qty	CS4 Qty
111	Timber Open Girder/Beam	19	0	19	0	0 Feet

---

Element Number	Defect Type	Defect Description	CS	CS Qty	Maint Qty
<input checked="" type="checkbox"/> 111	Check/Shake	CHECKS TO 0.125 INCH WIDE, SOFT TO .5 INCH DEEP ON ENDS.	2	19	Feet

General Comments

**Span 2** **Beam 5**  
**Timber Joist**

Element Number	Element Name	Total Qty	CS1 Qty	CS2 Qty	CS3 Qty	CS4 Qty
111	Timber Open Girder/Beam	19	0	19	0	0 Feet

---

Element Number	Defect Type	Defect Description	CS	CS Qty	Maint Qty
<input checked="" type="checkbox"/> 111	Check/Shake	CHECKS TO 0.125 INCH WIDE, SOFT TO .5 INCH DEEP ON ENDS.	2	19	Feet

General Comments

**Span 2** **Beam 6**  
**Timber Joist**

Element Number	Element Name	Total Qty	CS1 Qty	CS2 Qty	CS3 Qty	CS4 Qty
111	Timber Open Girder/Beam	19	0	19	0	0 Feet

---

Element Number	Defect Type	Defect Description	CS	CS Qty	Maint Qty
<input checked="" type="checkbox"/> 111	Check/Shake	CHECKS TO 0.125 INCH WIDE, SOFT TO .5 INCH DEEP ON ENDS.	2	19	Feet

General Comments

**Span 2** **Beam 7**  
**Timber Joist**

Element Number	Element Name	Total Qty	CS1 Qty	CS2 Qty	CS3 Qty	CS4 Qty
111	Timber Open Girder/Beam	19	0	19	0	0 Feet

---

Element Number	Defect Type	Defect Description	CS	CS Qty	Maint Qty
<input checked="" type="checkbox"/> 111	Check/Shake	CHECKS TO 0.125 INCH WIDE, SOFT TO .5 INCH DEEP ON ENDS.	2	19	Feet

General Comments

**Span 2** **Beam 8**  
**Timber Joist**

Element Number	Element Name	Total Qty	CS1 Qty	CS2 Qty	CS3 Qty	CS4 Qty
111	Timber Open Girder/Beam	19	0	19	0	0 Feet

---

Element Number	Defect Type	Defect Description	CS	CS Qty	Maint Qty
<input checked="" type="checkbox"/> 111	Check/Shake	CHECKS TO 0.125 INCH WIDE, SOFT TO .5 INCH DEEP ON ENDS.	2	19	Feet

General Comments

**Span 2** **Beam 9**  
**Timber Joist**

Element Number	Element Name	Total Qty	CS1 Qty	CS2 Qty	CS3 Qty	CS4 Qty
111	Timber Open Girder/Beam	19	0	19	0	0 Feet

---

Element Number	Defect Type	Defect Description	CS	CS Qty	Maint Qty
<input checked="" type="checkbox"/> 111	Check/Shake	CHECKS TO 0.125 INCH WIDE, SOFT TO .5 INCH DEEP ON ENDS.	2	19	Feet

General Comments

**Span 2****Beam 10****Timber Joist**

Element Number	Element Name	Total Qty	CS1 Qty	CS2 Qty	CS3 Qty	CS4 Qty
111	Timber Open Girder/Beam	19	0	19	0	0 Feet

Element Number	Defect Type	Defect Description	CS	CS Qty	Maint Qty
<input checked="" type="checkbox"/> 111	Check/Shake	CHECKS TO 0.125 INCH WIDE, SOFT TO .5 INCH DEEP ON ENDS.	2	19	Feet

General Comments

**Span 2****Beam 11****Timber Joist**

Element Number	Element Name	Total Qty	CS1 Qty	CS2 Qty	CS3 Qty	CS4 Qty
111	Timber Open Girder/Beam	19	0	19	0	0 Feet

Element Number	Defect Type	Defect Description	CS	CS Qty	Maint Qty
<input checked="" type="checkbox"/> 111	Check/Shake	CHECKS TO 0.125 INCH WIDE, SOFT TO .5 INCH DEEP ON ENDS.	2	19	Feet

General Comments

**Span 2****Beam 12****Timber Joist**

Element Number	Element Name	Total Qty	CS1 Qty	CS2 Qty	CS3 Qty	CS4 Qty
111	Timber Open Girder/Beam	19	0	19	0	0 Feet

Element Number	Defect Type	Defect Description	CS	CS Qty	Maint Qty
<input checked="" type="checkbox"/> 111	Check/Shake	CHECKS TO 0.125 INCH WIDE, SOFT TO .5 INCH DEEP ON ENDS.	2	19	Feet

General Comments

**Span 2****Beam 13****Timber Joist**

Element Number	Element Name	Total Qty	CS1 Qty	CS2 Qty	CS3 Qty	CS4 Qty
111	Timber Open Girder/Beam	19	0	19	0	0 Feet

Element Number	Defect Type	Defect Description	CS	CS Qty	Maint Qty
<input checked="" type="checkbox"/> 111	Check/Shake	CHECKS TO 0.125 INCH WIDE, SOFT TO .5 INCH DEEP ON ENDS.	2	19	Feet

General Comments

**Span 2****Beam 14****Timber Joist**

Element Number	Element Name	Total Qty	CS1 Qty	CS2 Qty	CS3 Qty	CS4 Qty
111	Timber Open Girder/Beam	19	0	19	0	0 Feet

Element Number	Defect Type	Defect Description	CS	CS Qty	Maint Qty
<input checked="" type="checkbox"/> 111	Check/Shake	CHECKS TO 0.125 INCH WIDE, SOFT TO .5 INCH DEEP ON ENDS.	2	19	Feet

General Comments

**Span 2****Beam 15****Timber Joist**

Element Number	Element Name	Total Qty	CS1 Qty	CS2 Qty	CS3 Qty	CS4 Qty
111	Timber Open Girder/Beam	19	0	19	0	0 Feet

Element Number	Defect Type	Defect Description	CS	CS Qty	Maint Qty
<input checked="" type="checkbox"/> 111	Check/Shake	CHECKS TO 0.125 INCH WIDE, SOFT TO .5 INCH DEEP ON ENDS.	2	19	Feet

General Comments

**Span 2****Beam 16****Timber Joist**

Element Number	Element Name	Total Qty	CS1 Qty	CS2 Qty	CS3 Qty	CS4 Qty
111	Timber Open Girder/Beam	19	0	19	0	0 Feet

Element Number	Defect Type	Defect Description	CS	CS Qty	Maint Qty
<input checked="" type="checkbox"/> 111	Check/Shake	CHECKS TO 0.125 INCH WIDE, SOFT TO .5 INCH DEEP ON ENDS.	2	19	Feet

General Comments

**Span 2****Beam 17****Timber Joist**

Element Number	Element Name	Total Qty	CS1 Qty	CS2 Qty	CS3 Qty	CS4 Qty
111	Timber Open Girder/Beam	19	0	19	0	0 Feet

Element Number	Defect Type	Defect Description	CS	CS Qty	Maint Qty
<input checked="" type="checkbox"/> 111	Check/Shake	CHECKS TO 0.125 INCH WIDE, SOFT TO .5 INCH DEEP ON ENDS.	2	19	Feet

General Comments

**Span 2** **Beam 18**  
**Timber Joist**

Element Number	Element Name	Total Qty	CS1 Qty	CS2 Qty	CS3 Qty	CS4 Qty
111	Timber Open Girder/Beam	19	0	19	0	0 Feet

---

Element Number	Defect Type	Defect Description	CS	CS Qty	Maint Qty
<input checked="" type="checkbox"/> 111	Check/Shake	CHECKS TO 0.125 INCH WIDE, SOFT TO .5 INCH DEEP ON ENDS.	2	19	Feet

**General Comments**

**Span 2** **Beam 19**  
**Timber Joist**

Element Number	Element Name	Total Qty	CS1 Qty	CS2 Qty	CS3 Qty	CS4 Qty
111	Timber Open Girder/Beam	19	0	19	0	0 Feet

---

Element Number	Defect Type	Defect Description	CS	CS Qty	Maint Qty
<input checked="" type="checkbox"/> 111	Check/Shake	CHECKS TO 0.125 INCH WIDE, SOFT TO .5 INCH DEEP ON ENDS.	2	19	Feet

**General Comments**

**Span 2** **Beam 20**  
**Timber Joist**

Element Number	Element Name	Total Qty	CS1 Qty	CS2 Qty	CS3 Qty	CS4 Qty
111	Timber Open Girder/Beam	19	0	19	0	0 Feet

---

Element Number	Defect Type	Defect Description	CS	CS Qty	Maint Qty
<input checked="" type="checkbox"/> 111	Check/Shake	CHECKS TO 0.125 INCH WIDE, SOFT TO .5 INCH DEEP ON ENDS.	2	19	Feet

**General Comments**

**Span 2** **Wearing Surface**  
**Asphalt Wearing Surface**

Element Number	Element Name	Total Qty	CS1 Qty	CS2 Qty	CS3 Qty	CS4 Qty
510	Wearing Surface	428	0	428	0	0 Square Feet

---

Element Number	Defect Type	Defect Description	CS	CS Qty	Maint Qty
<input checked="" type="checkbox"/> 510	Crack (Wearing Surface)	CRACKED TO .50 INCH, SPALLED TO 3 INCHES WIDE X FULL WIDTH OF ROADWAY OVER BENT 1.	2	428	28 Square Feet

**General Comments**

**Span 2 Left Bridge Rail****Concrete Railing**

Element Number	Element Name	Total Qty	CS1 Qty	CS2 Qty	CS3 Qty	CS4 Qty
331	Reinforced Concrete Bridge Railing	18	0	18	0	0 Feet

Element Number	Defect Type	Defect Description	CS	CS Qty	Maint Qty
<input checked="" type="checkbox"/> 331	Cracking (RC and Other)	RANDOM HAIRLINE CRACKS AND SCALING TO .125 INCH.	2	14	Feet
<input checked="" type="checkbox"/> 331	Patched Area	PREVIOUSLY NOTED SPALLS HAVE BEEN PATCHED. PATCHES HAVE CRACKS.	2	3	Square Feet
<input checked="" type="checkbox"/> 331	Patched Area	RAIL OVER POST 3 HAS A 2 INCH X 3 INCH CORNER SPALL EXPOSING REINFORCING STEEL. (AREA HAS BEEN REPAIRED).	2	1	Square Feet

**General Comments****Span 2 Right Bridge Rail****Concrete Railing**

Element Number	Element Name	Total Qty	CS1 Qty	CS2 Qty	CS3 Qty	CS4 Qty
331	Reinforced Concrete Bridge Railing	18	0	18	0	0 Feet

Element Number	Defect Type	Defect Description	CS	CS Qty	Maint Qty
<input checked="" type="checkbox"/> 331	Cracking (RC and Other)	RANDOM HAIRLINE CRACKS AND SCALING TO .125 INCH.	2	18	Feet

**General Comments****Span 2 Expansion Joint****Standard Joint**

Element Number	Element Name	Total Qty	CS1 Qty	CS2 Qty	CS3 Qty	CS4 Qty
301	Pourable Joint Seal	35	0	0	35	0 Feet

Element Number	Defect Type	Defect Description	CS	CS Qty	Maint Qty
<input checked="" type="checkbox"/> 301	Leakage	JOINT HAS A 1 INCH GAP WHERE JOINT MATERIAL IS MISSING, ALLOWING WATER TO DRAIN ON SUPERSTRUCTURE AND SUBSTRUCTURE COMPONENTS.	3	35	35 Feet

**General Comments****Span 2 Beam 21****Timber Joist**

Element Number	Element Name	Total Qty	CS1 Qty	CS2 Qty	CS3 Qty	CS4 Qty
111	Timber Open Girder/Beam	19	0	19	0	0 Feet

Element Number	Defect Type	Defect Description	CS	CS Qty	Maint Qty
<input checked="" type="checkbox"/> 111	Check/Shake	CHECKS TO 0.125 INCH WIDE, SOFT TO .5 INCH DEEP ON ENDS.	2	19	Feet

**General Comments**

**Span 2****Beam 22****Timber Joist**

Element Number	Element Name	Total Qty	CS1 Qty	CS2 Qty	CS3 Qty	CS4 Qty
111	Timber Open Girder/Beam	19	0	19	0	0 Feet

Element Number	Defect Type	Defect Description	CS	CS Qty	Maint Qty
<input checked="" type="checkbox"/> 111	Check/Shake	CHECKS TO .25 INCH WIDE, WEATHERED, AND SOFT TO .50 INCH DEEP ON ENDS.	2	19	Feet

General Comments

**Span 3****Deck****Reinforced Concrete Deck**

Element Number	Element Name	Total Qty	CS1 Qty	CS2 Qty	CS3 Qty	CS4 Qty
12	Reinforced Concrete Deck	584	583	0	1	0 Square Feet

Element Number	Defect Type	Defect Description	CS	CS Qty	Maint Qty
<input checked="" type="checkbox"/> 12	Delamination/Spall	PAR: 4 INCH DIAMETER HOLE THROUGH DECK IN SOUTH BOUND LANE.	3	1	1 Square Feet

General Comments

**Span 3****Beam 1****Timber Joist**

Element Number	Element Name	Total Qty	CS1 Qty	CS2 Qty	CS3 Qty	CS4 Qty
111	Timber Open Girder/Beam	18	0	18	0	0 Feet

Element Number	Defect Type	Defect Description	CS	CS Qty	Maint Qty
<input checked="" type="checkbox"/> 111	Check/Shake	CHECKS TO .25 INCH WIDE, WEATHERED, AND SOFT TO .50 INCH DEEP ON ENDS.	2	18	Feet

General Comments

**Span 3****Beam 2****Timber Joist**

Element Number	Element Name	Total Qty	CS1 Qty	CS2 Qty	CS3 Qty	CS4 Qty
111	Timber Open Girder/Beam	18	0	18	0	0 Feet

Element Number	Defect Type	Defect Description	CS	CS Qty	Maint Qty
<input checked="" type="checkbox"/> 111	Check/Shake	CHECKS TO 0.125 INCH WIDE, SOFT TO .5 INCH DEEP ON ENDS.	2	18	Feet

General Comments

**Span 3** **Beam 3**  
**Timber Joist**

Element Number	Element Name	Total Qty	CS1 Qty	CS2 Qty	CS3 Qty	CS4 Qty
111	Timber Open Girder/Beam	18	0	18	0	0 Feet

---

Element Number	Defect Type	Defect Description	CS	CS Qty	Maint Qty
<input checked="" type="checkbox"/> 111	Check/Shake	CHECKS TO 0.125 INCH WIDE, SOFT TO .5 INCH DEEP ON ENDS.	2	18	Feet

General Comments

**Span 3** **Beam 4**  
**Timber Joist**

Element Number	Element Name	Total Qty	CS1 Qty	CS2 Qty	CS3 Qty	CS4 Qty
111	Timber Open Girder/Beam	18	0	18	0	0 Feet

---

Element Number	Defect Type	Defect Description	CS	CS Qty	Maint Qty
<input checked="" type="checkbox"/> 111	Check/Shake	CHECKS TO 0.125 INCH WIDE, SOFT TO .5 INCH DEEP ON ENDS.	2	18	Feet

General Comments

**Span 3** **Beam 5**  
**Timber Joist**

Element Number	Element Name	Total Qty	CS1 Qty	CS2 Qty	CS3 Qty	CS4 Qty
111	Timber Open Girder/Beam	18	0	18	0	0 Feet

---

Element Number	Defect Type	Defect Description	CS	CS Qty	Maint Qty
<input checked="" type="checkbox"/> 111	Check/Shake	CHECKS TO 0.125 INCH WIDE, SOFT TO .5 INCH DEEP ON ENDS.	2	18	Feet

General Comments

**Span 3** **Beam 6**  
**Timber Joist**

Element Number	Element Name	Total Qty	CS1 Qty	CS2 Qty	CS3 Qty	CS4 Qty
111	Timber Open Girder/Beam	18	0	18	0	0 Feet

---

Element Number	Defect Type	Defect Description	CS	CS Qty	Maint Qty
<input checked="" type="checkbox"/> 111	Check/Shake	CHECKS TO 0.125 INCH WIDE, SOFT TO .5 INCH DEEP ON ENDS.	2	18	Feet

General Comments



**Span 3** **Beam 7**  
**Timber Joist**

Element Number	Element Name	Total Qty	CS1 Qty	CS2 Qty	CS3 Qty	CS4 Qty
111	Timber Open Girder/Beam	18	0	18	0	0 Feet

---

Element Number	Defect Type	Defect Description	CS	CS Qty	Maint Qty
<input checked="" type="checkbox"/> 111	Check/Shake	CHECKS TO 0.125 INCH WIDE, SOFT TO .5 INCH DEEP ON ENDS.	2	18	Feet

General Comments

**Span 3** **Beam 8**  
**Timber Joist**

Element Number	Element Name	Total Qty	CS1 Qty	CS2 Qty	CS3 Qty	CS4 Qty
111	Timber Open Girder/Beam	18	0	18	0	0 Feet

---

Element Number	Defect Type	Defect Description	CS	CS Qty	Maint Qty
<input checked="" type="checkbox"/> 111	Check/Shake	CHECKS TO 0.125 INCH WIDE, SOFT TO .5 INCH DEEP ON ENDS.	2	18	Feet

General Comments

**Span 3** **Beam 9**  
**Timber Joist**

Element Number	Element Name	Total Qty	CS1 Qty	CS2 Qty	CS3 Qty	CS4 Qty
111	Timber Open Girder/Beam	18	0	18	0	0 Feet

---

Element Number	Defect Type	Defect Description	CS	CS Qty	Maint Qty
<input checked="" type="checkbox"/> 111	Check/Shake	CHECKS TO 0.125 INCH WIDE, SOFT TO .5 INCH DEEP ON ENDS.	2	18	Feet

General Comments

**Span 3** **Beam 10**  
**Timber Joist**

Element Number	Element Name	Total Qty	CS1 Qty	CS2 Qty	CS3 Qty	CS4 Qty
111	Timber Open Girder/Beam	18	0	18	0	0 Feet

---

Element Number	Defect Type	Defect Description	CS	CS Qty	Maint Qty
<input checked="" type="checkbox"/> 111	Check/Shake	CHECKS TO 0.125 INCH WIDE, SOFT TO .5 INCH DEEP ON ENDS.	2	18	Feet

General Comments

**Span 3** **Beam 11**  
**Timber Joist**

Element Number	Element Name	Total Qty	CS1 Qty	CS2 Qty	CS3 Qty	CS4 Qty
111	Timber Open Girder/Beam	18	0	18	0	0 Feet

---

Element Number	Defect Type	Defect Description	CS	CS Qty	Maint Qty
<input checked="" type="checkbox"/> 111	Check/Shake	CHECKS TO 0.125 INCH WIDE, SOFT TO .5 INCH DEEP ON ENDS.	2	18	Feet

General Comments

**Span 3** **Beam 12**  
**Timber Joist**

Element Number	Element Name	Total Qty	CS1 Qty	CS2 Qty	CS3 Qty	CS4 Qty
111	Timber Open Girder/Beam	18	0	18	0	0 Feet

---

Element Number	Defect Type	Defect Description	CS	CS Qty	Maint Qty
<input checked="" type="checkbox"/> 111	Check/Shake	CHECKS TO 0.125 INCH WIDE, SOFT TO .5 INCH DEEP ON ENDS.	2	18	Feet

General Comments

**Span 3** **Beam 13**  
**Timber Joist**

Element Number	Element Name	Total Qty	CS1 Qty	CS2 Qty	CS3 Qty	CS4 Qty
111	Timber Open Girder/Beam	18	0	18	0	0 Feet

---

Element Number	Defect Type	Defect Description	CS	CS Qty	Maint Qty
<input checked="" type="checkbox"/> 111	Check/Shake	CHECKS TO 0.125 INCH WIDE, SOFT TO .5 INCH DEEP ON ENDS.	2	18	Feet

General Comments

**Span 3** **Beam 14**  
**Timber Joist**

Element Number	Element Name	Total Qty	CS1 Qty	CS2 Qty	CS3 Qty	CS4 Qty
111	Timber Open Girder/Beam	18	0	18	0	0 Feet

---

Element Number	Defect Type	Defect Description	CS	CS Qty	Maint Qty
<input checked="" type="checkbox"/> 111	Check/Shake	CHECKS TO 0.125 INCH WIDE, SOFT TO .5 INCH DEEP ON ENDS.	2	18	Feet

General Comments

**Span 3** **Beam 15**  
**Timber Joist**

Element Number	Element Name	Total Qty	CS1 Qty	CS2 Qty	CS3 Qty	CS4 Qty
111	Timber Open Girder/Beam	18	0	18	0	0 Feet

---

Element Number	Defect Type	Defect Description	CS	CS Qty	Maint Qty
<input checked="" type="checkbox"/> 111	Check/Shake	CHECKS TO 0.125 INCH WIDE, SOFT TO .5 INCH DEEP ON ENDS.	2	18	Feet

General Comments

**Span 3** **Beam 16**  
**Timber Joist**

Element Number	Element Name	Total Qty	CS1 Qty	CS2 Qty	CS3 Qty	CS4 Qty
111	Timber Open Girder/Beam	18	0	18	0	0 Feet

---

Element Number	Defect Type	Defect Description	CS	CS Qty	Maint Qty
<input checked="" type="checkbox"/> 111	Check/Shake	CHECKS TO 0.125 INCH WIDE, SOFT TO .5 INCH DEEP ON ENDS.	2	18	Feet

General Comments

**Span 3** **Beam 17**  
**Timber Joist**

Element Number	Element Name	Total Qty	CS1 Qty	CS2 Qty	CS3 Qty	CS4 Qty
111	Timber Open Girder/Beam	18	0	18	0	0 Feet

---

Element Number	Defect Type	Defect Description	CS	CS Qty	Maint Qty
<input checked="" type="checkbox"/> 111	Check/Shake	CHECKS TO 0.125 INCH WIDE, SOFT TO .5 INCH DEEP ON ENDS.	2	18	Feet

General Comments

**Span 3** **Beam 18**  
**Timber Joist**

Element Number	Element Name	Total Qty	CS1 Qty	CS2 Qty	CS3 Qty	CS4 Qty
111	Timber Open Girder/Beam	18	0	18	0	0 Feet

---

Element Number	Defect Type	Defect Description	CS	CS Qty	Maint Qty
<input checked="" type="checkbox"/> 111	Check/Shake	CHECKS TO 0.125 INCH WIDE, SOFT TO .5 INCH DEEP ON ENDS.	2	18	Feet

General Comments

**Span 3****Beam 19****Timber Joist**

Element Number	Element Name	Total Qty	CS1 Qty	CS2 Qty	CS3 Qty	CS4 Qty
111	Timber Open Girder/Beam	18	0	18	0	0 Feet

Element Number	Defect Type	Defect Description	CS	CS Qty	Maint Qty
<input checked="" type="checkbox"/> 111	Check/Shake	CHECKS TO 0.125 INCH WIDE, SOFT TO .5 INCH DEEP ON ENDS.	2	18	Feet

General Comments

**Span 3****Beam 20****Timber Joist**

Element Number	Element Name	Total Qty	CS1 Qty	CS2 Qty	CS3 Qty	CS4 Qty
111	Timber Open Girder/Beam	18	0	18	0	0 Feet

Element Number	Defect Type	Defect Description	CS	CS Qty	Maint Qty
<input checked="" type="checkbox"/> 111	Check/Shake	CHECKS TO .25 INCH WIDE, WEATHERED, AND SOFT TO .50 INCH DEEP ON ENDS.	2	18	Feet

General Comments

**Span 3****Left Bridge Rail****Concrete Railing**

Element Number	Element Name	Total Qty	CS1 Qty	CS2 Qty	CS3 Qty	CS4 Qty
331	Reinforced Concrete Bridge Railing	17	0	17	0	0 Feet

Element Number	Defect Type	Defect Description	CS	CS Qty	Maint Qty
<input checked="" type="checkbox"/> 331	Cracking (RC and Other)	POST 1 HAS A VERTICAL HAIRLINE TO .0625 INCH CRACK.	2	1	Feet
<input checked="" type="checkbox"/> 331	Cracking (RC and Other)	RANDOM HAIRLINE CRACKS AND SCALING TO .125 INCH.	2	15	Feet
<input checked="" type="checkbox"/> 331	Patched Area	RAIL POST 2 HAS A FAILED PATCH WITH EXPOSED REINFORCING STEEL 2 INCH DIAMETER. (AREA HAS BEEN REPAIRED).	2	1	Square Feet

General Comments

**Span 3****Right Bridge Rail****Concrete Railing**

Element Number	Element Name	Total Qty	CS1 Qty	CS2 Qty	CS3 Qty	CS4 Qty
331	Reinforced Concrete Bridge Railing	17	0	17	0	0 Feet

Element Number	Defect Type	Defect Description	CS	CS Qty	Maint Qty
<input checked="" type="checkbox"/> 331	Cracking (RC and Other)	RANDOM HAIRLINE CRACKS AND SCALING TO .125 INCH.	2	17	Feet

General Comments

**Span 3 Expansion Joint****Standard Joint**

Element Number	Element Name	Total Qty	CS1 Qty	CS2 Qty	CS3 Qty	CS4 Qty
301	Pourable Joint Seal	35	0	0	35	0 Feet

Element Number	Defect Type	Defect Description	CS	CS Qty	Maint Qty
<input checked="" type="checkbox"/> 301	Leakage	JOINT HAS A 1 INCH GAP WHERE JOINT MATERIAL IS MISSING, ALLOWING WATER TO DRAIN ON SUPERSTRUCTURE AND SUBSTRUCTURE COMPONENTS.	3	35	35 Feet

**General Comments****Span 3 Wearing Surface****Epoxy Wearing Surface**

Element Number	Element Name	Total Qty	CS1 Qty	CS2 Qty	CS3 Qty	CS4 Qty
510	Wearing Surface	423	0	423	0	0 Square Feet

Element Number	Defect Type	Defect Description	CS	CS Qty	Maint Qty
<input checked="" type="checkbox"/> 510	Crack (Wearing Surface)	CRACKED TO .50 INCH, SPALLED TO 3 INCHES WIDE X FULL WIDTH OF ROADWAY OVER BENT 2.	2	423	23 Square Feet

**General Comments****Span 4 Beam 1****Timber Joist**

Element Number	Element Name	Total Qty	CS1 Qty	CS2 Qty	CS3 Qty	CS4 Qty
111	Timber Open Girder/Beam	19	0	19	0	0 Feet

Element Number	Defect Type	Defect Description	CS	CS Qty	Maint Qty
<input checked="" type="checkbox"/> 111	Check/Shake	CHECKS TO .25 INCH WIDE, WEATHERED, AND SOFT TO .50 INCH DEEP ON ENDS.	2	19	Feet

**General Comments****Span 4 Beam 2****Timber Joist**

Element Number	Element Name	Total Qty	CS1 Qty	CS2 Qty	CS3 Qty	CS4 Qty
111	Timber Open Girder/Beam	19	0	19	0	0 Feet

Element Number	Defect Type	Defect Description	CS	CS Qty	Maint Qty
<input checked="" type="checkbox"/> 111	Check/Shake	CHECKS TO .125 INCH WIDE AND SOFT TO .50 INCH DEEP ON ENDS.	2	19	Feet

**General Comments**

**Span 4****Beam 3****Timber Joist**

Element Number	Element Name	Total Qty	CS1 Qty	CS2 Qty	CS3 Qty	CS4 Qty
111	Timber Open Girder/Beam	19	0	19	0	0 Feet

Element Number	Defect Type	Defect Description	CS	CS Qty	Maint Qty
<input checked="" type="checkbox"/> 111	Check/Shake	CHECKS TO .125 INCH WIDE AND SOFT TO .50 INCH DEEP ON ENDS.	2	19	Feet

General Comments

**Span 4****Beam 4****Timber Joist**

Element Number	Element Name	Total Qty	CS1 Qty	CS2 Qty	CS3 Qty	CS4 Qty
111	Timber Open Girder/Beam	19	0	19	0	0 Feet

Element Number	Defect Type	Defect Description	CS	CS Qty	Maint Qty
<input checked="" type="checkbox"/> 111	Check/Shake	CHECKS TO .125 INCH WIDE AND SOFT TO .50 INCH DEEP ON ENDS.	2	19	Feet

General Comments

**Span 4****Beam 5****Timber Joist**

Element Number	Element Name	Total Qty	CS1 Qty	CS2 Qty	CS3 Qty	CS4 Qty
111	Timber Open Girder/Beam	19	0	19	0	0 Feet

Element Number	Defect Type	Defect Description	CS	CS Qty	Maint Qty
<input checked="" type="checkbox"/> 111	Check/Shake	CHECKS TO .125 INCH WIDE AND SOFT TO .50 INCH DEEP ON ENDS.	2	19	Feet

General Comments

**Span 4****Beam 6****Timber Joist**

Element Number	Element Name	Total Qty	CS1 Qty	CS2 Qty	CS3 Qty	CS4 Qty
111	Timber Open Girder/Beam	19	0	19	0	0 Feet

Element Number	Defect Type	Defect Description	CS	CS Qty	Maint Qty
<input checked="" type="checkbox"/> 111	Check/Shake	CHECKS TO .125 INCH WIDE AND SOFT TO .50 INCH DEEP ON ENDS.	2	19	Feet

General Comments

**Span 4** **Beam 7**  
**Timber Joist**

Element Number	Element Name	Total Qty	CS1 Qty	CS2 Qty	CS3 Qty	CS4 Qty
111	Timber Open Girder/Beam	19	0	19	0	0 Feet

---

Element Number	Defect Type	Defect Description	CS	CS Qty	Maint Qty
<input checked="" type="checkbox"/> 111	Check/Shake	CHECKS TO .125 INCH WIDE AND SOFT TO .50 INCH DEEP ON ENDS.	2	19	Feet

General Comments

**Span 4** **Beam 8**  
**Timber Joist**

Element Number	Element Name	Total Qty	CS1 Qty	CS2 Qty	CS3 Qty	CS4 Qty
111	Timber Open Girder/Beam	19	0	19	0	0 Feet

---

Element Number	Defect Type	Defect Description	CS	CS Qty	Maint Qty
<input checked="" type="checkbox"/> 111	Check/Shake	CHECKS TO .125 INCH WIDE AND SOFT TO .50 INCH DEEP ON ENDS.	2	19	Feet

General Comments

**Span 4** **Beam 9**  
**Timber Joist**

Element Number	Element Name	Total Qty	CS1 Qty	CS2 Qty	CS3 Qty	CS4 Qty
111	Timber Open Girder/Beam	19	0	19	0	0 Feet

---

Element Number	Defect Type	Defect Description	CS	CS Qty	Maint Qty
<input checked="" type="checkbox"/> 111	Check/Shake	CHECKS TO .125 INCH WIDE AND SOFT TO .50 INCH DEEP ON ENDS.	2	19	Feet

General Comments

**Span 4** **Beam 10**  
**Timber Joist**

Element Number	Element Name	Total Qty	CS1 Qty	CS2 Qty	CS3 Qty	CS4 Qty
111	Timber Open Girder/Beam	19	0	19	0	0 Feet

---

Element Number	Defect Type	Defect Description	CS	CS Qty	Maint Qty
<input checked="" type="checkbox"/> 111	Check/Shake	CHECKS TO .125 INCH WIDE AND SOFT TO .50 INCH DEEP ON ENDS.	2	19	Feet

General Comments

**Span 4****Beam 11****Timber Joist**

Element Number	Element Name	Total Qty	CS1 Qty	CS2 Qty	CS3 Qty	CS4 Qty
111	Timber Open Girder/Beam	19	0	19	0	0 Feet

Element Number	Defect Type	Defect Description	CS	CS Qty	Maint Qty
<input checked="" type="checkbox"/> 111	Check/Shake	CHECKS TO .125 INCH WIDE AND SOFT TO .50 INCH DEEP ON ENDS.	2	19	Feet

General Comments

**Span 4****Beam 12****Timber Joist**

Element Number	Element Name	Total Qty	CS1 Qty	CS2 Qty	CS3 Qty	CS4 Qty
111	Timber Open Girder/Beam	19	0	19	0	0 Feet

Element Number	Defect Type	Defect Description	CS	CS Qty	Maint Qty
<input checked="" type="checkbox"/> 111	Check/Shake	CHECKS TO .125 INCH WIDE AND SOFT TO .50 INCH DEEP ON ENDS.	2	19	Feet

General Comments

**Span 4****Beam 13****Timber Joist**

Element Number	Element Name	Total Qty	CS1 Qty	CS2 Qty	CS3 Qty	CS4 Qty
111	Timber Open Girder/Beam	19	0	19	0	0 Feet

Element Number	Defect Type	Defect Description	CS	CS Qty	Maint Qty
<input checked="" type="checkbox"/> 111	Check/Shake	CHECKS TO .125 INCH WIDE AND SOFT TO .50 INCH DEEP ON ENDS.	2	19	Feet

General Comments

**Span 4****Beam 14****Timber Joist**

Element Number	Element Name	Total Qty	CS1 Qty	CS2 Qty	CS3 Qty	CS4 Qty
111	Timber Open Girder/Beam	19	0	19	0	0 Feet

Element Number	Defect Type	Defect Description	CS	CS Qty	Maint Qty
<input checked="" type="checkbox"/> 111	Check/Shake	CHECKS TO .125 INCH WIDE AND SOFT TO .50 INCH DEEP ON ENDS.	2	19	Feet

General Comments



**Span 4****Beam 15****Timber Joist**

Element Number	Element Name	Total Qty	CS1 Qty	CS2 Qty	CS3 Qty	CS4 Qty
111	Timber Open Girder/Beam	19	0	19	0	0 Feet

Element Number	Defect Type	Defect Description	CS	CS Qty	Maint Qty
<input checked="" type="checkbox"/> 111	Check/Shake	CHECKS TO .125 INCH WIDE AND SOFT TO .50 INCH DEEP ON ENDS.	2	19	Feet

General Comments

**Span 4****Beam 16****Timber Joist**

Element Number	Element Name	Total Qty	CS1 Qty	CS2 Qty	CS3 Qty	CS4 Qty
111	Timber Open Girder/Beam	19	0	19	0	0 Feet

Element Number	Defect Type	Defect Description	CS	CS Qty	Maint Qty
<input checked="" type="checkbox"/> 111	Check/Shake	CHECKS TO .125 INCH WIDE AND SOFT TO .50 INCH DEEP ON ENDS.	2	19	Feet

General Comments

**Span 4****Beam 17****Timber Joist**

Element Number	Element Name	Total Qty	CS1 Qty	CS2 Qty	CS3 Qty	CS4 Qty
111	Timber Open Girder/Beam	19	0	19	0	0 Feet

Element Number	Defect Type	Defect Description	CS	CS Qty	Maint Qty
<input checked="" type="checkbox"/> 111	Check/Shake	CHECKS TO .125 INCH WIDE AND SOFT TO .50 INCH DEEP ON ENDS.	2	19	Feet

General Comments

**Span 4****Beam 18****Timber Joist**

Element Number	Element Name	Total Qty	CS1 Qty	CS2 Qty	CS3 Qty	CS4 Qty
111	Timber Open Girder/Beam	19	0	19	0	0 Feet

Element Number	Defect Type	Defect Description	CS	CS Qty	Maint Qty
<input checked="" type="checkbox"/> 111	Check/Shake	CHECKS TO .125 INCH WIDE AND SOFT TO .50 INCH DEEP ON ENDS.	2	19	Feet

General Comments

**Span 4****Beam 19****Timber Joist**

Element Number	Element Name	Total Qty	CS1 Qty	CS2 Qty	CS3 Qty	CS4 Qty
111	Timber Open Girder/Beam	19	0	19	0	0 Feet

Element Number	Defect Type	Defect Description	CS	CS Qty	Maint Qty
<input checked="" type="checkbox"/> 111	Check/Shake	CHECKS TO .125 INCH WIDE AND SOFT TO .50 INCH DEEP ON ENDS.	2	19	Feet

General Comments

**Span 4****Beam 20****Timber Joist**

Element Number	Element Name	Total Qty	CS1 Qty	CS2 Qty	CS3 Qty	CS4 Qty
111	Timber Open Girder/Beam	19	0	19	0	0 Feet

Element Number	Defect Type	Defect Description	CS	CS Qty	Maint Qty
<input checked="" type="checkbox"/> 111	Check/Shake	CHECKS TO .125 INCH WIDE AND SOFT TO .50 INCH DEEP ON ENDS.	2	19	Feet

General Comments

**Span 4****Left Bridge Rail****Concrete Railing**

Element Number	Element Name	Total Qty	CS1 Qty	CS2 Qty	CS3 Qty	CS4 Qty
331	Reinforced Concrete Bridge Railing	18	0	18	0	0 Feet

Element Number	Defect Type	Defect Description	CS	CS Qty	Maint Qty
<input checked="" type="checkbox"/> 331	Cracking (RC and Other)	POST 1 HAS A VERTICAL HAIRLINE TO .0625 INCH CRACK	2	1	Feet
<input checked="" type="checkbox"/> 331	Cracking (RC and Other)	RANDOM HAIRLINE CRACKS AND SCALING TO .125 INCH.	2	17	Feet

General Comments

**Span 4****Right Bridge Rail****Concrete Railing**

Element Number	Element Name	Total Qty	CS1 Qty	CS2 Qty	CS3 Qty	CS4 Qty
331	Reinforced Concrete Bridge Railing	18	0	18	0	0 Feet

Element Number	Defect Type	Defect Description	CS	CS Qty	Maint Qty
<input checked="" type="checkbox"/> 331	Cracking (RC and Other)	RANDOM HAIRLINE CRACKS AND SCALING TO .125 INCH.	2	18	Feet

General Comments

**Span 4 Expansion Joint****Standard Joint**

Element Number	Element Name	Total Qty	CS1 Qty	CS2 Qty	CS3 Qty	CS4 Qty
301	Pourable Joint Seal	35	0	0	35	0 Feet

Element Number	Defect Type	Defect Description	CS	CS Qty	Maint Qty
<input checked="" type="checkbox"/> 301	Leakage	JOINT HAS A 1 INCH GAP WHERE JOINT MATERIAL IS MISSING, ALLOWING WATER TO DRAIN ON SUPERSTRUCTURE AND SUBSTRUCTURE COMPONENTS.	3	35	35 Feet

**General Comments****Span 4 Wearing Surface****Epoxy Wearing Surface**

Element Number	Element Name	Total Qty	CS1 Qty	CS2 Qty	CS3 Qty	CS4 Qty
510	Wearing Surface	428	0	428	0	0 Square Feet

Element Number	Defect Type	Defect Description	CS	CS Qty	Maint Qty
<input checked="" type="checkbox"/> 510	Crack (Wearing Surface)	CRACKED TO .50 INCH, SPALLED TO 3 INCHES WIDE X FULL WIDTH OF ROADWAY OVER BENT 3.	2	428	28 Square Feet

**General Comments****Span 4 Beam 21****Timber Joist**

Element Number	Element Name	Total Qty	CS1 Qty	CS2 Qty	CS3 Qty	CS4 Qty
111	Timber Open Girder/Beam	19	0	19	0	0 Feet

Element Number	Defect Type	Defect Description	CS	CS Qty	Maint Qty
<input checked="" type="checkbox"/> 111	Check/Shake	CHECKS TO .125 INCH WIDE AND SOFT TO .50 INCH DEEP ON ENDS.	2	19	Feet

**General Comments****Span 4 Beam 22****Timber Joist**

Element Number	Element Name	Total Qty	CS1 Qty	CS2 Qty	CS3 Qty	CS4 Qty
111	Timber Open Girder/Beam	19	0	19	0	0 Feet

Element Number	Defect Type	Defect Description	CS	CS Qty	Maint Qty
<input checked="" type="checkbox"/> 111	Check/Shake	CHECKS TO .25 INCH WIDE, WEATHERED, AND SOFT TO .50 INCH DEEP ON ENDS.	2	19	Feet

**General Comments**

**Span 5** **Beam 1**  
**Timber Joist**

Element Number	Element Name	Total Qty	CS1 Qty	CS2 Qty	CS3 Qty	CS4 Qty
111	Timber Open Girder/Beam	19	0	19	0	0 Feet

---

Element Number	Defect Type	Defect Description	CS	CS Qty	Maint Qty
<input checked="" type="checkbox"/> 111	Check/Shake	CHECKS TO .25 INCH WIDE, WEATHERED, AND SOFT TO .50 INCH DEEP ON ENDS.	2	19	Feet

General Comments

**Span 5** **Beam 2**  
**Timber Joist**

Element Number	Element Name	Total Qty	CS1 Qty	CS2 Qty	CS3 Qty	CS4 Qty
111	Timber Open Girder/Beam	19	0	19	0	0 Feet

---

Element Number	Defect Type	Defect Description	CS	CS Qty	Maint Qty
<input checked="" type="checkbox"/> 111	Check/Shake	CHECKS TO .125 INCH WIDE, SOFT TO .50 INCH DEEP ON ENDS.	2	19	Feet

General Comments

**Span 5** **Beam 3**  
**Timber Joist**

Element Number	Element Name	Total Qty	CS1 Qty	CS2 Qty	CS3 Qty	CS4 Qty
111	Timber Open Girder/Beam	19	0	19	0	0 Feet

---

Element Number	Defect Type	Defect Description	CS	CS Qty	Maint Qty
<input checked="" type="checkbox"/> 111	Check/Shake	CHECKS TO .125 INCH WIDE, SOFT TO .50 INCH DEEP ON ENDS.	2	19	Feet

General Comments

**Span 5** **Beam 4**  
**Timber Joist**

Element Number	Element Name	Total Qty	CS1 Qty	CS2 Qty	CS3 Qty	CS4 Qty
111	Timber Open Girder/Beam	19	0	19	0	0 Feet

---

Element Number	Defect Type	Defect Description	CS	CS Qty	Maint Qty
<input checked="" type="checkbox"/> 111	Check/Shake	CHECKS TO .125 INCH WIDE, SOFT TO .50 INCH DEEP ON ENDS.	2	19	Feet

General Comments

**Span 5** **Beam 5**  
**Timber Joist**

Element Number	Element Name	Total Qty	CS1 Qty	CS2 Qty	CS3 Qty	CS4 Qty
111	Timber Open Girder/Beam	19	0	19	0	0 Feet

---

Element Number	Defect Type	Defect Description	CS	CS Qty	Maint Qty
<input checked="" type="checkbox"/> 111	Check/Shake	CHECKS TO .125 INCH WIDE, SOFT TO .50 INCH DEEP ON ENDS.	2	19	Feet

General Comments

**Span 5** **Beam 6**  
**Timber Joist**

Element Number	Element Name	Total Qty	CS1 Qty	CS2 Qty	CS3 Qty	CS4 Qty
111	Timber Open Girder/Beam	19	0	19	0	0 Feet

---

Element Number	Defect Type	Defect Description	CS	CS Qty	Maint Qty
<input checked="" type="checkbox"/> 111	Check/Shake	CHECKS TO .125 INCH WIDE, SOFT TO .50 INCH DEEP ON ENDS.	2	19	Feet

General Comments

**Span 5** **Beam 7**  
**Timber Joist**

Element Number	Element Name	Total Qty	CS1 Qty	CS2 Qty	CS3 Qty	CS4 Qty
111	Timber Open Girder/Beam	19	0	19	0	0 Feet

---

Element Number	Defect Type	Defect Description	CS	CS Qty	Maint Qty
<input checked="" type="checkbox"/> 111	Check/Shake	CHECKS TO .125 INCH WIDE, SOFT TO .50 INCH DEEP ON ENDS.	2	19	Feet

General Comments

**Span 5** **Beam 8**  
**Timber Joist**

Element Number	Element Name	Total Qty	CS1 Qty	CS2 Qty	CS3 Qty	CS4 Qty
111	Timber Open Girder/Beam	19	0	19	0	0 Feet

---

Element Number	Defect Type	Defect Description	CS	CS Qty	Maint Qty
<input checked="" type="checkbox"/> 111	Check/Shake	CHECKS TO .125 INCH WIDE, SOFT TO .50 INCH DEEP ON ENDS.	2	19	Feet

General Comments

**Span 5****Beam 9****Timber Joist**

Element Number	Element Name	Total Qty	CS1 Qty	CS2 Qty	CS3 Qty	CS4 Qty
111	Timber Open Girder/Beam	19	0	19	0	0 Feet

Element Number	Defect Type	Defect Description	CS	CS Qty	Maint Qty
<input checked="" type="checkbox"/> 111	Check/Shake	CHECKS TO .125 INCH WIDE, SOFT TO .50 INCH DEEP ON ENDS.	2	19	Feet

General Comments

**Span 5****Beam 10****Timber Joist**

Element Number	Element Name	Total Qty	CS1 Qty	CS2 Qty	CS3 Qty	CS4 Qty
111	Timber Open Girder/Beam	19	0	19	0	0 Feet

Element Number	Defect Type	Defect Description	CS	CS Qty	Maint Qty
<input checked="" type="checkbox"/> 111	Check/Shake	CHECKS TO .125 INCH WIDE, SOFT TO .50 INCH DEEP ON ENDS.	2	19	Feet

General Comments

**Span 5****Beam 11****Timber Joist**

Element Number	Element Name	Total Qty	CS1 Qty	CS2 Qty	CS3 Qty	CS4 Qty
111	Timber Open Girder/Beam	19	0	19	0	0 Feet

Element Number	Defect Type	Defect Description	CS	CS Qty	Maint Qty
<input checked="" type="checkbox"/> 111	Check/Shake	CHECKS TO .125 INCH WIDE, SOFT TO .50 INCH DEEP ON ENDS.	2	19	Feet

General Comments

**Span 5****Beam 12****Timber Joist**

Element Number	Element Name	Total Qty	CS1 Qty	CS2 Qty	CS3 Qty	CS4 Qty
111	Timber Open Girder/Beam	19	0	19	0	0 Feet

Element Number	Defect Type	Defect Description	CS	CS Qty	Maint Qty
<input checked="" type="checkbox"/> 111	Check/Shake	CHECKS TO .125 INCH WIDE, SOFT TO .50 INCH DEEP ON ENDS.	2	19	Feet

General Comments

**Span 5****Beam 13****Timber Joist**

Element Number	Element Name	Total Qty	CS1 Qty	CS2 Qty	CS3 Qty	CS4 Qty
111	Timber Open Girder/Beam	19	0	19	0	0 Feet

Element Number	Defect Type	Defect Description	CS	CS Qty	Maint Qty
<input checked="" type="checkbox"/> 111	Check/Shake	CHECKS TO .125 INCH WIDE, SOFT TO .50 INCH DEEP ON ENDS.	2	19	Feet

General Comments

**Span 5****Beam 14****Timber Joist**

Element Number	Element Name	Total Qty	CS1 Qty	CS2 Qty	CS3 Qty	CS4 Qty
111	Timber Open Girder/Beam	19	0	19	0	0 Feet

Element Number	Defect Type	Defect Description	CS	CS Qty	Maint Qty
<input checked="" type="checkbox"/> 111	Check/Shake	CHECKS TO .125 INCH WIDE, SOFT TO .50 INCH DEEP ON ENDS.	2	19	Feet

General Comments

**Span 5****Beam 15****Timber Joist**

Element Number	Element Name	Total Qty	CS1 Qty	CS2 Qty	CS3 Qty	CS4 Qty
111	Timber Open Girder/Beam	19	0	19	0	0 Feet

Element Number	Defect Type	Defect Description	CS	CS Qty	Maint Qty
<input checked="" type="checkbox"/> 111	Check/Shake	CHECKS TO .125 INCH WIDE, SOFT TO .50 INCH DEEP ON ENDS.	2	19	Feet

General Comments

**Span 5****Beam 16****Timber Joist**

Element Number	Element Name	Total Qty	CS1 Qty	CS2 Qty	CS3 Qty	CS4 Qty
111	Timber Open Girder/Beam	19	0	19	0	0 Feet

Element Number	Defect Type	Defect Description	CS	CS Qty	Maint Qty
<input checked="" type="checkbox"/> 111	Check/Shake	CHECKS TO .125 INCH WIDE, SOFT TO .50 INCH DEEP ON ENDS.	2	19	Feet

General Comments

**Span 5** **Beam 17**  
**Timber Joist**

Element Number	Element Name	Total Qty	CS1 Qty	CS2 Qty	CS3 Qty	CS4 Qty
111	Timber Open Girder/Beam	19	0	19	0	0 Feet

---

Element Number	Defect Type	Defect Description	CS	CS Qty	Maint Qty
<input checked="" type="checkbox"/> 111	Check/Shake	CHECKS TO .125 INCH WIDE, SOFT TO .50 INCH DEEP ON ENDS.	2	19	Feet

General Comments

**Span 5** **Beam 18**  
**Timber Joist**

Element Number	Element Name	Total Qty	CS1 Qty	CS2 Qty	CS3 Qty	CS4 Qty
111	Timber Open Girder/Beam	19	0	19	0	0 Feet

---

Element Number	Defect Type	Defect Description	CS	CS Qty	Maint Qty
<input checked="" type="checkbox"/> 111	Check/Shake	CHECKS TO .125 INCH WIDE, SOFT TO .50 INCH DEEP ON ENDS.	2	19	Feet

General Comments

**Span 5** **Beam 19**  
**Timber Joist**

Element Number	Element Name	Total Qty	CS1 Qty	CS2 Qty	CS3 Qty	CS4 Qty
111	Timber Open Girder/Beam	19	0	19	0	0 Feet

---

Element Number	Defect Type	Defect Description	CS	CS Qty	Maint Qty
<input checked="" type="checkbox"/> 111	Check/Shake	CHECKS TO .125 INCH WIDE, SOFT TO .50 INCH DEEP ON ENDS.	2	19	Feet

General Comments

**Span 5** **Beam 20**  
**Timber Joist**

Element Number	Element Name	Total Qty	CS1 Qty	CS2 Qty	CS3 Qty	CS4 Qty
111	Timber Open Girder/Beam	19	0	19	0	0 Feet

---

Element Number	Defect Type	Defect Description	CS	CS Qty	Maint Qty
<input checked="" type="checkbox"/> 111	Check/Shake	CHECKS TO .25 INCH WIDE, WEATHERED, AND SOFT TO .50 INCH DEEP ON ENDS.	2	19	Feet

General Comments



**Span 5 Left Bridge Rail****Concrete Railing**

Element Number	Element Name	Total Qty	CS1 Qty	CS2 Qty	CS3 Qty	CS4 Qty
331	Reinforced Concrete Bridge Railing	18	0	18	0	0 Feet

Element Number	Defect Type	Defect Description	CS	CS Qty	Maint Qty
<input checked="" type="checkbox"/> 331	Cracking (RC and Other)	END POST HAS A HAIRLINE TO .0625 INCH CRACK	2	1	Feet
<input checked="" type="checkbox"/> 331	Cracking (RC and Other)	RAIL HAS HAIRLINE TO .0625 INCH CRACK OVER POST 3	2	1	Feet
<input checked="" type="checkbox"/> 331	Cracking (RC and Other)	RANDOM HAIRLINE CRACKS AND SCALING TO .125 INCH.	2	16	Feet

General Comments

**Span 5 Right Bridge Rail****Concrete Railing**

Element Number	Element Name	Total Qty	CS1 Qty	CS2 Qty	CS3 Qty	CS4 Qty
331	Reinforced Concrete Bridge Railing	18	0	18	0	0 Feet

Element Number	Defect Type	Defect Description	CS	CS Qty	Maint Qty
<input checked="" type="checkbox"/> 331	Cracking (RC and Other)	RANDOM HAIRLINE CRACKS AND SCALING TO .125 INCH.	2	18	Feet

General Comments

**Span 5 Expansion Joint****Standard Joint**

Element Number	Element Name	Total Qty	CS1 Qty	CS2 Qty	CS3 Qty	CS4 Qty
301	Pourable Joint Seal	35	0	0	35	0 Feet

Element Number	Defect Type	Defect Description	CS	CS Qty	Maint Qty
<input checked="" type="checkbox"/> 301	Leakage	JOINT HAS A 1 INCH GAP WHERE JOINT MATERIAL IS MISSING, ALLOWING WATER TO DRAIN ON SUPERSTRUCTURE AND SUBSTRUCTURE COMPONENTS.	3	35	35 Feet

General Comments

**Span 5 Wearing Surface****Epoxy Wearing Surface**

Element Number	Element Name	Total Qty	CS1 Qty	CS2 Qty	CS3 Qty	CS4 Qty
510	Wearing Surface	435	0	435	0	0 Square Feet

Element Number	Defect Type	Defect Description	CS	CS Qty	Maint Qty
<input checked="" type="checkbox"/> 510	Crack (Wearing Surface)	CRACKED TO .50 INCH, SPALLED TO 1 INCH X FULL WIDTH OF ROADWAY OVER BENT 4 AND END BENT 2.	2	435	35 Square Feet

General Comments

**End Bent 1** **Abutment**  
**Other Abutment**

Element Number	Element Name	Total Qty	CS1 Qty	CS2 Qty	CS3 Qty	CS4 Qty
218	Other Abutments	40	0	40	0	0 Feet

Element Number	Defect Type	Defect Description	CS	CS Qty	Maint Qty
<input checked="" type="checkbox"/> 218	Corrosion	STEEL SHEETPILE HAS RUST AND SCALE WHERE PROTECTIVE COATING HAS FAILED..	2	40	Feet

General Comments

**End Bent 1** **Cap**  
**Timber Pier Cap**

Element Number	Element Name	Total Qty	CS1 Qty	CS2 Qty	CS3 Qty	CS4 Qty
235	Timber Pier Cap	35	0	33	2	0 Feet

Element Number	Defect Type	Defect Description	CS	CS Qty	Maint Qty
<input checked="" type="checkbox"/> 235	Decay/Section Loss	PAR: EAST END DECAYED FROM END BACK 16 INCHES, 5 INCHES TALL X 2 INCHES WIDE .	3	1	1 Feet
<input checked="" type="checkbox"/> 235	Decay/Section Loss	PAR: PEDESTRAIN WALKWAY SUBCAP HAS DECAY ON THE EAST END CENTER OF CAP. 8 INCH DIAMETER X 4 INCHES DEEP	3	1	1 Feet
<input checked="" type="checkbox"/> 235	Check/Shake	CHECKS TO .125 INCH WIDE AND .25 INCH ON ENDS, SOFT TO .50 INCH.	2	33	Feet

General Comments

**End Bent 1** **Pile 1**  
**Timber Pile**

Element Number	Element Name	Total Qty	CS1 Qty	CS2 Qty	CS3 Qty	CS4 Qty
228	Timber Pile	1	0	0	1	0 Each

Element Number	Defect Type	Defect Description	CS	CS Qty	Maint Qty
<input checked="" type="checkbox"/> 228	Check/Shake	PILE JACKETED WITH CONCRETE FROM 1 FOOT ABOVE MUDLINE TO 8-10 INCHES BELOW CAP. PILES WERE PREVIOUSLY RATED POOR DUE TO DECAY AND MARINE BORER ACTIVITY . CONCRETE JACKET REPAIRS ARE IN POOR CONDITION WITH LIMITED COVERAGE. CHECKS TO .125 INCH WIDE, SOFT TO .50 INCH DEEP WHERE TIMBER PILE IS EXPOSED.	3	1	3 Each

General Comments

**End Bent 1** **Pile 2**  
**Timber Pile**

Element Number	Element Name	Total Qty	CS1 Qty	CS2 Qty	CS3 Qty	CS4 Qty
228	Timber Pile	1	0	0	1	0 Each

Element Number	Defect Type	Defect Description	CS	CS Qty	Maint Qty
----------------	-------------	--------------------	----	--------	-----------

<input checked="" type="checkbox"/> <b>228</b>	Check/Shake	PILE JACKETED WITH CONCRETE FROM 1 FOOT ABOVE MUDLINE TO 8-10 INCHES BELOW CAP. PILES WERE PREVIOUSLY RATED POOR DUE TO DECAY AND MARINE BORER ACTIVITY . CONCRETE JACKET REPAIRS ARE IN POOR CONDITION WITH LIMITED COVERAGE. CHECKS TO .125 INCH WIDE, SOFT TO .50 INCH DEEP WHERE TIMBER PILE IS EXPOSED.	3	1	3	Each
--	-------------	--	---	---	---	------

**General Comments**

**End Bent 1 Pile 3**  
**Timber Pile**

Element Number	Element Name	Total Qty	CS1 Qty	CS2 Qty	CS3 Qty	CS4 Qty	
228	Timber Pile	1	0	0	1	0	Each

Element Number	Defect Type	Defect Description	CS	CS Qty	Maint Qty	
<input checked="" type="checkbox"/> <b>228</b>	Check/Shake	PILE JACKETED WITH CONCRETE FROM 1 FOOT ABOVE MUDLINE TO 8-10 INCHES BELOW CAP. PILES WERE PREVIOUSLY RATED POOR DUE TO DECAY AND MARINE BORER ACTIVITY . CONCRETE JACKET REPAIRS ARE IN POOR CONDITION WITH LIMITED COVERAGE. CHECKS TO .125 INCH WIDE, SOFT TO .50 INCH DEEP WHERE TIMBER PILE IS EXPOSED.	3	1	3	Each

**General Comments**

**End Bent 1 Pile 4**  
**Timber Pile**

Element Number	Element Name	Total Qty	CS1 Qty	CS2 Qty	CS3 Qty	CS4 Qty	
228	Timber Pile	1	0	0	1	0	Each

Element Number	Defect Type	Defect Description	CS	CS Qty	Maint Qty	
<input checked="" type="checkbox"/> <b>228</b>	Check/Shake	PILE JACKETED WITH CONCRETE FROM 1 FOOT ABOVE MUDLINE TO 8-10 INCHES BELOW CAP. PILES WERE PREVIOUSLY RATED POOR DUE TO DECAY AND MARINE BORER ACTIVITY . CONCRETE JACKET REPAIRS ARE IN POOR CONDITION WITH LIMITED COVERAGE. CHECKS TO .125 INCH WIDE, SOFT TO .50 INCH DEEP WHERE TIMBER PILE IS EXPOSED.	3	1	3	Each

**General Comments**

**End Bent 1 Pile 5**  
**Timber Pile**

Element Number	Element Name	Total Qty	CS1 Qty	CS2 Qty	CS3 Qty	CS4 Qty	
228	Timber Pile	1	0	0	1	0	Each

Element Number	Defect Type	Defect Description	CS	CS Qty	Maint Qty	
----------------	-------------	--------------------	----	--------	-----------	--

<input checked="" type="checkbox"/> <b>228</b>	Check/Shake	PILE JACKETED WITH CONCRETE FROM 1 FOOT ABOVE MUDLINE TO 8-10 INCHES BELOW CAP. PILES WERE PREVIOUSLY RATED POOR DUE TO DECAY AND MARINE BORER ACTIVITY . CONCRETE JACKET REPAIRS ARE IN POOR CONDITION WITH LIMITED COVERAGE. CHECKS TO .125 INCH WIDE, SOFT TO .50 INCH DEEP WHERE TIMBER PILE IS EXPOSED.	3	1	4	Each
--	-------------	--	---	---	---	------

**General Comments**

**End Bent 1 Pile 6 Timber Pile**

Element Number	Element Name	Total Qty	CS1 Qty	CS2 Qty	CS3 Qty	CS4 Qty
228	Timber Pile	1	0	0	1	0 Each

Element Number	Defect Type	Defect Description	CS	CS Qty	Maint Qty
<input checked="" type="checkbox"/> <b>228</b>	Check/Shake	PILE JACKETED WITH CONCRETE FROM 1 FOOT ABOVE MUDLINE TO 8-10 INCHES BELOW CAP. PILES WERE PREVIOUSLY RATED POOR DUE TO DECAY AND MARINE BORER ACTIVITY . CONCRETE JACKET REPAIRS ARE IN POOR CONDITION WITH LIMITED COVERAGE. CHECKS TO .125 INCH WIDE, SOFT TO .50 INCH DEEP WHERE TIMBER PILE IS EXPOSED.	3	1	3 Each

**General Comments**

**Bent 1 Cap Timber Pier Cap**

Element Number	Element Name	Total Qty	CS1 Qty	CS2 Qty	CS3 Qty	CS4 Qty
235	Timber Pier Cap	35	0	33	2	0 Feet

Element Number	Defect Type	Defect Description	CS	CS Qty	Maint Qty
<input checked="" type="checkbox"/> <b>235</b>	Decay/Section Loss	PAR: SUBCAP HAS DECAY ON EAST END TOP CORNER, 4 INCH DIAMETER X 14 INCHES DEEP	3	2	2 Feet
<input checked="" type="checkbox"/> <b>235</b>	Check/Shake	CHECKS TO .125 INCH WIDE AND .25 INCH ON ENDS, SOFT TO .50 INCH.	2	33	Feet

**General Comments**

**Bent 1 Pile 1 Timber Pile**

Element Number	Element Name	Total Qty	CS1 Qty	CS2 Qty	CS3 Qty	CS4 Qty
228	Timber Pile	1	0	0	1	0 Each

Element Number	Defect Type	Defect Description	CS	CS Qty	Maint Qty
<input checked="" type="checkbox"/> <b>228</b>	Check/Shake	PILE JACKETED WITH CONCRETE FROM 1 FOOT ABOVE MUDLINE TO 8-10 INCHES BELOW CAP. PILES WERE PREVIOUSLY RATED POOR DUE TO DECAY AND MARINE BORER ACTIVITY . CONCRETE JACKET REPAIRS ARE IN POOR CONDITION WITH LIMITED COVERAGE. CHECKS TO .125 INCH WIDE, SOFT TO .50 INCH DEEP WHERE TIMBER PILE IS EXPOSED.	3		Each

**228** Connection PAR: X-BRACING DECAYED AND DETACHED FROM PILE. 3 1 1 Each

**General Comments**

**Bent 1 Pile 2**  
**Timber Pile**

Element Number	Element Name	Total Qty	CS1 Qty	CS2 Qty	CS3 Qty	CS4 Qty
228	Timber Pile	1	0	0	1	0 Each

Element Number	Defect Type	Defect Description	CS	CS Qty	Maint Qty
<input checked="" type="checkbox"/> 228	Check/Shake	PILE JACKETED WITH CONCRETE FROM 1 FOOT ABOVE MUDLINE TO 8-10 INCHES BELOW CAP. PILES WERE PREVIOUSLY RATED POOR DUE TO DECAY AND MARINE BORER ACTIVITY . CONCRETE JACKET REPAIRS ARE IN POOR CONDITION WITH LIMITED COVERAGE. CHECKS TO .125 INCH WIDE, SOFT TO .50 INCH DEEP WHERE TIMBER PILE IS EXPOSED.	3	1	4 Each

**General Comments**

**Bent 1 Pile 3**  
**Timber Pile**

Element Number	Element Name	Total Qty	CS1 Qty	CS2 Qty	CS3 Qty	CS4 Qty
228	Timber Pile	1	0	0	1	0 Each

Element Number	Defect Type	Defect Description	CS	CS Qty	Maint Qty
<input checked="" type="checkbox"/> 228	Check/Shake	PILE JACKETED WITH CONCRETE FROM 1 FOOT ABOVE MUDLINE TO 8-10 INCHES BELOW CAP. PILES WERE PREVIOUSLY RATED POOR DUE TO DECAY AND MARINE BORER ACTIVITY . CONCRETE JACKET REPAIRS ARE IN POOR CONDITION WITH LIMITED COVERAGE. CHECKS TO .125 INCH WIDE, SOFT TO .50 INCH DEEP WHERE TIMBER PILE IS EXPOSED.	3	1	4 Each

**General Comments**

**Bent 1 Pile 4**  
**Timber Pile**

Element Number	Element Name	Total Qty	CS1 Qty	CS2 Qty	CS3 Qty	CS4 Qty
228	Timber Pile	1	0	0	1	0 Each

Element Number	Defect Type	Defect Description	CS	CS Qty	Maint Qty
<input checked="" type="checkbox"/> 228	Check/Shake	PILE JACKETED WITH CONCRETE FROM 1 FOOT ABOVE MUDLINE TO 8-10 INCHES BELOW CAP. PILES WERE PREVIOUSLY RATED POOR DUE TO DECAY AND MARINE BORER ACTIVITY . CONCRETE JACKET REPAIRS ARE IN POOR CONDITION WITH LIMITED COVERAGE. CHECKS TO .125 INCH WIDE, SOFT TO .50 INCH DEEP WHERE TIMBER PILE IS EXPOSED.	3	1	4 Each

**General Comments**

**Bent 1 Pile 5**  
**Timber Pile**

Element Number	Element Name	Total Qty	CS1 Qty	CS2 Qty	CS3 Qty	CS4 Qty
228	Timber Pile	1	0	0	1	0 Each

Element Number	Defect Type	Defect Description	CS	CS Qty	Maint Qty
<input checked="" type="checkbox"/> 228	Check/Shake	PILE JACKETED WITH CONCRETE FROM 1 FOOT ABOVE MUDLINE TO 8-10 INCHES BELOW CAP. PILES WERE PREVIOUSLY RATED POOR DUE TO DECAY AND MARINE BORER ACTIVITY . CONCRETE JACKET REPAIRS ARE IN POOR CONDITION WITH LIMITED COVERAGE. CHECKS TO .125 INCH WIDE, SOFT TO .50 INCH DEEP WHERE TIMBER PILE IS EXPOSED.	3	1	4 Each

General Comments

**Bent 1 Pile 6**  
**Timber Pile**

Element Number	Element Name	Total Qty	CS1 Qty	CS2 Qty	CS3 Qty	CS4 Qty
228	Timber Pile	1	0	0	1	0 Each

Element Number	Defect Type	Defect Description	CS	CS Qty	Maint Qty
<input checked="" type="checkbox"/> 228	Check/Shake	PILE JACKETED WITH CONCRETE FROM 1 FOOT ABOVE MUDLINE TO 8-10 INCHES BELOW CAP. PILES WERE PREVIOUSLY RATED POOR DUE TO DECAY AND MARINE BORER ACTIVITY . CONCRETE JACKET REPAIRS ARE IN POOR CONDITION WITH LIMITED COVERAGE. CHECKS TO .125 INCH WIDE, SOFT TO .50 INCH DEEP WHERE TIMBER PILE IS EXPOSED.	3	1	4 Each

General Comments

**Bent 2 Cap**  
**Timber Pier Cap**

Element Number	Element Name	Total Qty	CS1 Qty	CS2 Qty	CS3 Qty	CS4 Qty
235	Timber Pier Cap	35	0	35	0	0 Feet

Element Number	Defect Type	Defect Description	CS	CS Qty	Maint Qty
<input checked="" type="checkbox"/> 235	Check/Shake	CHECKS TO .125 INCH WIDE AND .25 INCH ON ENDS, SOFT TO .50 INCH.	2	35	Feet
<input checked="" type="checkbox"/> 235	Decay/Section Loss	PEDESTRAIN WALKWAY SUBCAP HAS BEEN REPAIRED WITH A STEEL SPLICE PLATE.	2		Feet

General Comments

**Bent 2 Pile 1**  
**Timber Pile**

Element Number	Element Name	Total Qty	CS1 Qty	CS2 Qty	CS3 Qty	CS4 Qty
228	Timber Pile	1	0	0	1	0 Each

Element Number	Defect Type	Defect Description	CS	CS Qty	Maint Qty
----------------	-------------	--------------------	----	--------	-----------

<input checked="" type="checkbox"/> <b>228</b>	Check/Shake	PILE JACKETED WITH CONCRETE FROM 1 FOOT ABOVE MUDLINE TO 8-10 INCHES BELOW CAP. PILES WERE PREVIOUSLY RATED POOR DUE TO DECAY AND MARINE BORER ACTIVITY . CONCRETE JACKET REPAIRS ARE IN POOR CONDITION WITH LIMITED COVERAGE. CHECKS TO .125 INCH WIDE, SOFT TO .50 INCH DEEP WHERE TIMBER PILE IS EXPOSED.	3	1	5	Each
--	-------------	--	---	---	---	------

**General Comments**

**Bent 2 Pile 2**  
**Timber Pile**

Element Number	Element Name	Total Qty	CS1 Qty	CS2 Qty	CS3 Qty	CS4 Qty	
228	Timber Pile	1	0	0	1	0	Each

Element Number	Defect Type	Defect Description	CS	CS Qty	Maint Qty	
<input checked="" type="checkbox"/> <b>228</b>	Check/Shake	PILE JACKETED WITH CONCRETE FROM 1 FOOT ABOVE MUDLINE TO 8-10 INCHES BELOW CAP. PILES WERE PREVIOUSLY RATED POOR DUE TO DECAY AND MARINE BORER ACTIVITY . CONCRETE JACKET REPAIRS ARE IN POOR CONDITION WITH LIMITED COVERAGE. CHECKS TO .125 INCH WIDE, SOFT TO .50 INCH DEEP WHERE TIMBER PILE IS EXPOSED.	3	1	4	Each

**General Comments**

**Bent 2 Pile 3**  
**Timber Pile**

Element Number	Element Name	Total Qty	CS1 Qty	CS2 Qty	CS3 Qty	CS4 Qty	
228	Timber Pile	1	0	0	1	0	Each

Element Number	Defect Type	Defect Description	CS	CS Qty	Maint Qty	
<input checked="" type="checkbox"/> <b>228</b>	Check/Shake	PILE JACKETED WITH CONCRETE FROM 1 FOOT ABOVE MUDLINE TO 8-10 INCHES BELOW CAP. PILES WERE PREVIOUSLY RATED POOR DUE TO DECAY AND MARINE BORER ACTIVITY . CONCRETE JACKET REPAIRS ARE IN POOR CONDITION WITH LIMITED COVERAGE. CHECKS TO .125 INCH WIDE, SOFT TO .50 INCH DEEP WHERE TIMBER PILE IS EXPOSED.	3	1	4	Each

**General Comments**

**Bent 2 Pile 4**  
**Timber Pile**

Element Number	Element Name	Total Qty	CS1 Qty	CS2 Qty	CS3 Qty	CS4 Qty	
228	Timber Pile	1	0	0	1	0	Each

Element Number	Defect Type	Defect Description	CS	CS Qty	Maint Qty	
----------------	-------------	--------------------	----	--------	-----------	--

<input checked="" type="checkbox"/> <b>228</b>	Check/Shake	PILE JACKETED WITH CONCRETE FROM 1 FOOT ABOVE MUDLINE TO 8-10 INCHES BELOW CAP. PILES WERE PREVIOUSLY RATED POOR DUE TO DECAY AND MARINE BORER ACTIVITY . CONCRETE JACKET REPAIRS ARE IN POOR CONDITION WITH LIMITED COVERAGE. CHECKS TO .125 INCH WIDE, SOFT TO .50 INCH DEEP WHERE TIMBER PILE IS EXPOSED.	3	1	5	Each
--	-------------	--	---	---	---	------

**General Comments**

**Bent 2 Pile 5 Timber Pile**

Element Number	Element Name	Total Qty	CS1 Qty	CS2 Qty	CS3 Qty	CS4 Qty	
228	Timber Pile	1	0	0	1	0	Each

Element Number	Defect Type	Defect Description	CS	CS Qty	Maint Qty	
<input checked="" type="checkbox"/> <b>228</b>	Check/Shake	PILE JACKETED WITH CONCRETE FROM 1 FOOT ABOVE MUDLINE TO 8-10 INCHES BELOW CAP. PILES WERE PREVIOUSLY RATED POOR DUE TO DECAY AND MARINE BORER ACTIVITY . CONCRETE JACKET REPAIRS ARE IN POOR CONDITION WITH LIMITED COVERAGE. CHECKS TO .125 INCH WIDE, SOFT TO .50 INCH DEEP WHERE TIMBER PILE IS EXPOSED.	3	1	5	Each

**General Comments**

**Bent 2 Pile 6 Timber Pile**

Element Number	Element Name	Total Qty	CS1 Qty	CS2 Qty	CS3 Qty	CS4 Qty	
228	Timber Pile	1	0	0	1	0	Each

Element Number	Defect Type	Defect Description	CS	CS Qty	Maint Qty	
<input checked="" type="checkbox"/> <b>228</b>	Check/Shake	PILE JACKETED WITH CONCRETE FROM 1 FOOT ABOVE MUDLINE TO 8-10 INCHES BELOW CAP. PILES WERE PREVIOUSLY RATED POOR DUE TO DECAY AND MARINE BORER ACTIVITY . CONCRETE JACKET REPAIRS ARE IN POOR CONDITION WITH LIMITED COVERAGE. CHECKS TO .125 INCH WIDE, SOFT TO .50 INCH DEEP WHERE TIMBER PILE IS EXPOSED.	3	1	5	Each

**General Comments**

**End Bent 2 Cap Timber Pier Cap**

Element Number	Element Name	Total Qty	CS1 Qty	CS2 Qty	CS3 Qty	CS4 Qty	
235	Timber Pier Cap	35	0	35	0	0	Feet

Element Number	Defect Type	Defect Description	CS	CS Qty	Maint Qty	
<input checked="" type="checkbox"/> <b>235</b>	Check/Shake	CHECKS TO .125 INCH WIDE AND .25 INCH ON ENDS, SOFT TO .50 INCH.	2	35		Feet

**General Comments**



**End Bent 2 Pile 1**  
**Timber Pile**

Element Number	Element Name	Total Qty	CS1 Qty	CS2 Qty	CS3 Qty	CS4 Qty
228	Timber Pile	1	0	0	1	0 Each

Element Number	Defect Type	Defect Description	CS	CS Qty	Maint Qty
<input checked="" type="checkbox"/> 228	Check/Shake	PILE JACKETED WITH CONCRETE FROM 1 FOOT ABOVE MUDLINE TO 8-10 INCHES BELOW CAP. PILES WERE PREVIOUSLY RATED POOR DUE TO DECAY AND MARINE BORER ACTIVITY . CONCRETE JACKET REPAIRS ARE IN POOR CONDITION WITH LIMITED COVERAGE. CHECKS TO .125 INCH WIDE, SOFT TO .50 INCH DEEP WHERE TIMBER PILE IS EXPOSED.	3	1	3 Each

General Comments

**End Bent 2 Pile 2**  
**Timber Pile**

Element Number	Element Name	Total Qty	CS1 Qty	CS2 Qty	CS3 Qty	CS4 Qty
228	Timber Pile	1	0	0	1	0 Each

Element Number	Defect Type	Defect Description	CS	CS Qty	Maint Qty
<input checked="" type="checkbox"/> 228	Check/Shake	PILE JACKETED WITH CONCRETE FROM 1 FOOT ABOVE MUDLINE TO 8-10 INCHES BELOW CAP. PILES WERE PREVIOUSLY RATED POOR DUE TO DECAY AND MARINE BORER ACTIVITY . CONCRETE JACKET REPAIRS ARE IN POOR CONDITION WITH LIMITED COVERAGE. CHECKS TO .125 INCH WIDE, SOFT TO .50 INCH DEEP WHERE TIMBER PILE IS EXPOSED.	3	1	3 Each

General Comments

**End Bent 2 Pile 3**  
**Timber Pile**

Element Number	Element Name	Total Qty	CS1 Qty	CS2 Qty	CS3 Qty	CS4 Qty
228	Timber Pile	1	0	0	1	0 Each

Element Number	Defect Type	Defect Description	CS	CS Qty	Maint Qty
<input checked="" type="checkbox"/> 228	Check/Shake	PILE JACKETED WITH CONCRETE FROM 1 FOOT ABOVE MUDLINE TO 8-10 INCHES BELOW CAP. PILES WERE PREVIOUSLY RATED POOR DUE TO DECAY AND MARINE BORER ACTIVITY . CONCRETE JACKET REPAIRS ARE IN POOR CONDITION WITH LIMITED COVERAGE. CHECKS TO .125 INCH WIDE, SOFT TO .50 INCH DEEP WHERE TIMBER PILE IS EXPOSED.	3	1	4 Each

General Comments

**End Bent 2 Pile 4**  
**Timber Pile**

Element Number	Element Name	Total Qty	CS1 Qty	CS2 Qty	CS3 Qty	CS4 Qty
228	Timber Pile	1	0	0	1	0 Each

Element Number	Defect Type	Defect Description	CS	CS Qty	Maint Qty
<input checked="" type="checkbox"/> 228	Check/Shake	PILE JACKETED WITH CONCRETE FROM 1 FOOT ABOVE MUDLINE TO 8-10 INCHES BELOW CAP. PILES WERE PREVIOUSLY RATED POOR DUE TO DECAY AND MARINE BORER ACTIVITY . CONCRETE JACKET REPAIRS ARE IN POOR CONDITION WITH LIMITED COVERAGE. CHECKS TO .125 INCH WIDE, SOFT TO .50 INCH DEEP WHERE TIMBER PILE IS EXPOSED.	3	1	3 Each

General Comments

**End Bent 2 Pile 5**  
**Timber Pile**

Element Number	Element Name	Total Qty	CS1 Qty	CS2 Qty	CS3 Qty	CS4 Qty
228	Timber Pile	1	0	0	1	0 Each

Element Number	Defect Type	Defect Description	CS	CS Qty	Maint Qty
<input checked="" type="checkbox"/> 228	Check/Shake	PILE JACKETED WITH CONCRETE FROM 1 FOOT ABOVE MUDLINE TO 8-10 INCHES BELOW CAP. PILES WERE PREVIOUSLY RATED POOR DUE TO DECAY AND MARINE BORER ACTIVITY . CONCRETE JACKET REPAIRS ARE IN POOR CONDITION WITH LIMITED COVERAGE. CHECKS TO .125 INCH WIDE, SOFT TO .50 INCH DEEP WHERE TIMBER PILE IS EXPOSED.	3	1	4 Each

General Comments

**End Bent 2 Pile 6**  
**Timber Pile**

Element Number	Element Name	Total Qty	CS1 Qty	CS2 Qty	CS3 Qty	CS4 Qty
228	Timber Pile	1	0	0	1	0 Each

Element Number	Defect Type	Defect Description	CS	CS Qty	Maint Qty
<input checked="" type="checkbox"/> 228	Check/Shake	PILE JACKETED WITH CONCRETE FROM 1 FOOT ABOVE MUDLINE TO 8-10 INCHES BELOW CAP. PILES WERE PREVIOUSLY RATED POOR DUE TO DECAY AND MARINE BORER ACTIVITY . CONCRETE JACKET REPAIRS ARE IN POOR CONDITION WITH LIMITED COVERAGE. CHECKS TO .125 INCH WIDE, SOFT TO .50 INCH DEEP WHERE TIMBER PILE IS EXPOSED.	3	1	3 Each

General Comments

**Bent 3 Cap**  
**Timber Pier Cap**

Element Number	Element Name	Total Qty	CS1 Qty	CS2 Qty	CS3 Qty	CS4 Qty	
235	Timber Pier Cap	35	0	34	1	0	Feet

Element Number	Defect Type	Defect Description	CS	CS Qty	Maint Qty	
<input checked="" type="checkbox"/> 235	Decay/Section Loss	PAR: PEDESTRAIN WALKWAY SUBCAP HAS DECAY ON EAST END IN CENTER. 9 INCH DIAMETER X 9 INCHES DEEP.	3	1	1	Feet
<input checked="" type="checkbox"/> 235	Check/Shake	CHECKS TO .125 INCH WIDE AND .25 INCH ON ENDS, SOFT TO .50 INCH.	2	34		Feet

General Comments

**Bent 3 Pile 1**  
**Timber Pile**

Element Number	Element Name	Total Qty	CS1 Qty	CS2 Qty	CS3 Qty	CS4 Qty	
228	Timber Pile	1	0	0	1	0	Each

Element Number	Defect Type	Defect Description	CS	CS Qty	Maint Qty	
<input checked="" type="checkbox"/> 228	Check/Shake	PILE JACKETED WITH CONCRETE FROM 1 FOOT ABOVE MUDLINE TO 8-10 INCHES BELOW CAP. PILES WERE PREVIOUSLY RATED POOR DUE TO DECAY AND MARINE BORER ACTIVITY . CONCRETE JACKET REPAIRS ARE IN POOR CONDITION WITH LIMITED COVERAGE. CHECKS TO .125 INCH WIDE, SOFT TO .50 INCH DEEP WHERE TIMBER PILE IS EXPOSED.	3	1	4	Each

General Comments

**Bent 3 Pile 2**  
**Timber Pile**

Element Number	Element Name	Total Qty	CS1 Qty	CS2 Qty	CS3 Qty	CS4 Qty	
228	Timber Pile	1	0	0	1	0	Each

Element Number	Defect Type	Defect Description	CS	CS Qty	Maint Qty	
<input checked="" type="checkbox"/> 228	Check/Shake	PILE JACKETED WITH CONCRETE FROM 1 FOOT ABOVE MUDLINE TO 8-10 INCHES BELOW CAP. PILES WERE PREVIOUSLY RATED POOR DUE TO DECAY AND MARINE BORER ACTIVITY . CONCRETE JACKET REPAIRS ARE IN POOR CONDITION WITH LIMITED COVERAGE. CHECKS TO .125 INCH WIDE, SOFT TO .50 INCH DEEP WHERE TIMBER PILE IS EXPOSED.	3	1	4	Each

General Comments

**Bent 3 Pile 3**  
**Timber Pile**

Element Number	Element Name	Total Qty	CS1 Qty	CS2 Qty	CS3 Qty	CS4 Qty
228	Timber Pile	1	0	0	1	0 Each

Element Number	Defect Type	Defect Description	CS	CS Qty	Maint Qty
<input checked="" type="checkbox"/> 228	Check/Shake	PILE JACKETED WITH CONCRETE FROM 1 FOOT ABOVE MUDLINE TO 8-10 INCHES BELOW CAP. PILES WERE PREVIOUSLY RATED POOR DUE TO DECAY AND MARINE BORER ACTIVITY . CONCRETE JACKET REPAIRS ARE IN POOR CONDITION WITH LIMITED COVERAGE. CHECKS TO .125 INCH WIDE, SOFT TO .50 INCH DEEP WHERE TIMBER PILE IS EXPOSED.	3	1	5 Each

General Comments

**Bent 3 Pile 4**  
**Timber Pile**

Element Number	Element Name	Total Qty	CS1 Qty	CS2 Qty	CS3 Qty	CS4 Qty
228	Timber Pile	1	0	0	1	0 Each

Element Number	Defect Type	Defect Description	CS	CS Qty	Maint Qty
<input checked="" type="checkbox"/> 228	Check/Shake	PILE JACKETED WITH CONCRETE FROM 1 FOOT ABOVE MUDLINE TO 8-10 INCHES BELOW CAP. PILES WERE PREVIOUSLY RATED POOR DUE TO DECAY AND MARINE BORER ACTIVITY . CONCRETE JACKET REPAIRS ARE IN POOR CONDITION WITH LIMITED COVERAGE. CHECKS TO .125 INCH WIDE, SOFT TO .50 INCH DEEP WHERE TIMBER PILE IS EXPOSED.	3	1	5 Each

General Comments

**Bent 3 Pile 5**  
**Timber Pile**

Element Number	Element Name	Total Qty	CS1 Qty	CS2 Qty	CS3 Qty	CS4 Qty
228	Timber Pile	1	0	0	1	0 Each

Element Number	Defect Type	Defect Description	CS	CS Qty	Maint Qty
<input checked="" type="checkbox"/> 228	Check/Shake	PILE JACKETED WITH CONCRETE FROM 1 FOOT ABOVE MUDLINE TO 8-10 INCHES BELOW CAP. PILES WERE PREVIOUSLY RATED POOR DUE TO DECAY AND MARINE BORER ACTIVITY . CONCRETE JACKET REPAIRS ARE IN POOR CONDITION WITH LIMITED COVERAGE. CHECKS TO .125 INCH WIDE, SOFT TO .50 INCH DEEP WHERE TIMBER PILE IS EXPOSED.	3	1	5 Each

General Comments

**Bent 3****Pile 6****Timber Pile**

Element Number	Element Name	Total Qty	CS1 Qty	CS2 Qty	CS3 Qty	CS4 Qty
228	Timber Pile	1	0	0	1	0 Each

Element Number	Defect Type	Defect Description	CS	CS Qty	Maint Qty
<input checked="" type="checkbox"/> 228	Check/Shake	PILE JACKETED WITH CONCRETE FROM 1 FOOT ABOVE MUDLINE TO 8-10 INCHES BELOW CAP. PILES WERE PREVIOUSLY RATED POOR DUE TO DECAY AND MARINE BORER ACTIVITY . CONCRETE JACKET REPAIRS ARE IN POOR CONDITION WITH LIMITED COVERAGE. CHECKS TO .125 INCH WIDE, SOFT TO .50 INCH DEEP WHERE TIMBER PILE IS EXPOSED.	3	1	5 Each

**General Comments****Bent 4****Cap****Timber Pier Cap**

Element Number	Element Name	Total Qty	CS1 Qty	CS2 Qty	CS3 Qty	CS4 Qty
235	Timber Pier Cap	35	0	33	2	0 Feet

Element Number	Defect Type	Defect Description	CS	CS Qty	Maint Qty
<input checked="" type="checkbox"/> 235	Decay/Section Loss	PAR: BENT 4 SUBCAP WEST END HAS AN AREA OF DECAY 6 INCH DIAMETER X 6 INCHES DEEP.	3	1	Feet
<input checked="" type="checkbox"/> 235	Decay/Section Loss	PAR: EAST END OF CAP AT CENTER, DECAYED AREA 8 INCH DIAMETER X 13 INCHES DEEP.	3	1	1 Feet
<input checked="" type="checkbox"/> 235	Check/Shake	CHECKS TO .125 INCH WIDE AND .25 INCH ON ENDS, SOFT TO .50 INCH.	2	33	Feet

**General Comments****Bent 4****Pile 1****Timber Pile**

Element Number	Element Name	Total Qty	CS1 Qty	CS2 Qty	CS3 Qty	CS4 Qty
228	Timber Pile	1	0	0	1	0 Each

Element Number	Defect Type	Defect Description	CS	CS Qty	Maint Qty
<input checked="" type="checkbox"/> 228	Check/Shake	PILE JACKETED WITH CONCRETE FROM 1 FOOT ABOVE MUDLINE TO 8-10 INCHES BELOW CAP. PILES WERE PREVIOUSLY RATED POOR DUE TO DECAY AND MARINE BORER ACTIVITY . CONCRETE JACKET REPAIRS ARE IN POOR CONDITION WITH LIMITED COVERAGE. CHECKS TO .125 INCH WIDE, SOFT TO .50 INCH DEEP WHERE TIMBER PILE IS EXPOSED.	3	1	4 Each

**General Comments**

**Bent 4 Pile 2**  
**Timber Pile**

Element Number	Element Name	Total Qty	CS1 Qty	CS2 Qty	CS3 Qty	CS4 Qty
228	Timber Pile	1	0	0	1	0 Each

Element Number	Defect Type	Defect Description	CS	CS Qty	Maint Qty
<input checked="" type="checkbox"/> 228	Check/Shake	PILE JACKETED WITH CONCRETE FROM 1 FOOT ABOVE MUDLINE TO 8-10 INCHES BELOW CAP. PILES WERE PREVIOUSLY RATED POOR DUE TO DECAY AND MARINE BORER ACTIVITY . CONCRETE JACKET REPAIRS ARE IN POOR CONDITION WITH LIMITED COVERAGE. CHECKS TO .125 INCH WIDE, SOFT TO .50 INCH DEEP WHERE TIMBER PILE IS EXPOSED.	3	1	4 Each

General Comments

**Bent 4 Pile 3**  
**Timber Pile**

Element Number	Element Name	Total Qty	CS1 Qty	CS2 Qty	CS3 Qty	CS4 Qty
228	Timber Pile	1	0	0	1	0 Each

Element Number	Defect Type	Defect Description	CS	CS Qty	Maint Qty
<input checked="" type="checkbox"/> 228	Check/Shake	PILE JACKETED WITH CONCRETE FROM 1 FOOT ABOVE MUDLINE TO 8-10 INCHES BELOW CAP. PILES WERE PREVIOUSLY RATED POOR DUE TO DECAY AND MARINE BORER ACTIVITY . CONCRETE JACKET REPAIRS ARE IN POOR CONDITION WITH LIMITED COVERAGE. CHECKS TO .125 INCH WIDE, SOFT TO .50 INCH DEEP WHERE TIMBER PILE IS EXPOSED.	3	1	4 Each

General Comments

**Bent 4 Pile 4**  
**Timber Pile**

Element Number	Element Name	Total Qty	CS1 Qty	CS2 Qty	CS3 Qty	CS4 Qty
228	Timber Pile	1	0	0	1	0 Each

Element Number	Defect Type	Defect Description	CS	CS Qty	Maint Qty
<input checked="" type="checkbox"/> 228	Check/Shake	PILE JACKETED WITH CONCRETE FROM 1 FOOT ABOVE MUDLINE TO 8-10 INCHES BELOW CAP. PILES WERE PREVIOUSLY RATED POOR DUE TO DECAY AND MARINE BORER ACTIVITY . CONCRETE JACKET REPAIRS ARE IN POOR CONDITION WITH LIMITED COVERAGE. CHECKS TO .125 INCH WIDE, SOFT TO .50 INCH DEEP WHERE TIMBER PILE IS EXPOSED.	3	1	3 Each

General Comments

**Bent 4 Pile 5**

**Timber Pile**

Element Number	Element Name	Total Qty	CS1 Qty	CS2 Qty	CS3 Qty	CS4 Qty
228	Timber Pile	1	0	0	1	0 Each

Element Number	Defect Type	Defect Description	CS	CS Qty	Maint Qty
<input checked="" type="checkbox"/> 228	Check/Shake	PILE JACKETED WITH CONCRETE FROM 1 FOOT ABOVE MUDLINE TO 8-10 INCHES BELOW CAP. PILES WERE PREVIOUSLY RATED POOR DUE TO DECAY AND MARINE BORER ACTIVITY . CONCRETE JACKET REPAIRS ARE IN POOR CONDITION WITH LIMITED COVERAGE. CHECKS TO .125 INCH WIDE, SOFT TO .50 INCH DEEP WHERE TIMBER PILE IS EXPOSED.	3	1	3 Each

**General Comments**

**Bent 4 Pile 6**

**Timber Pile**

Element Number	Element Name	Total Qty	CS1 Qty	CS2 Qty	CS3 Qty	CS4 Qty
228	Timber Pile	1	0	0	1	0 Each

Element Number	Defect Type	Defect Description	CS	CS Qty	Maint Qty
<input checked="" type="checkbox"/> 228	Check/Shake	PILE JACKETED WITH CONCRETE FROM 1 FOOT ABOVE MUDLINE TO 8-10 INCHES BELOW CAP. PILES WERE PREVIOUSLY RATED POOR DUE TO DECAY AND MARINE BORER ACTIVITY . CONCRETE JACKET REPAIRS ARE IN POOR CONDITION WITH LIMITED COVERAGE. CHECKS TO .125 INCH WIDE, SOFT TO .50 INCH DEEP WHERE TIMBER PILE IS EXPOSED.	3	1	3 Each

**General Comments**

## Elements Verified

Location	Name	Component	Element Name	Amount
Span 1	Deck	Reinforced Concrete Deck	Reinforced Concrete Deck	621
Span 1	Beam 1	Timber Joist	Timber Open Girder/Beam	18
Span 1	Beam 2	Timber Joist	Timber Open Girder/Beam	18
Span 1	Beam 3	Timber Joist	Timber Open Girder/Beam	18
Span 1	Beam 4	Timber Joist	Timber Open Girder/Beam	18
Span 1	Beam 5	Timber Joist	Timber Open Girder/Beam	18
Span 1	Beam 6	Timber Joist	Timber Open Girder/Beam	18
Span 1	Beam 7	Timber Joist	Timber Open Girder/Beam	18
Span 1	Beam 8	Timber Joist	Timber Open Girder/Beam	18
Span 1	Beam 9	Timber Joist	Timber Open Girder/Beam	18
Span 1	Beam 10	Timber Joist	Timber Open Girder/Beam	18
Span 1	Beam 11	Timber Joist	Timber Open Girder/Beam	18
Span 1	Beam 12	Timber Joist	Timber Open Girder/Beam	18
Span 1	Beam 13	Timber Joist	Timber Open Girder/Beam	18
Span 1	Beam 14	Timber Joist	Timber Open Girder/Beam	18
Span 1	Beam 15	Timber Joist	Timber Open Girder/Beam	18
Span 1	Beam 16	Timber Joist	Timber Open Girder/Beam	18
Span 1	Beam 17	Timber Joist	Timber Open Girder/Beam	18
Span 1	Beam 18	Timber Joist	Timber Open Girder/Beam	18
Span 1	Beam 19	Timber Joist	Timber Open Girder/Beam	18
Span 1	Beam 20	Timber Joist	Timber Open Girder/Beam	18
Span 1	Left Bridge Rail	Concrete Railing	Reinforced Concrete Bridge Railing	18
Span 1	Right Bridge Rail	Concrete Railing	Reinforced Concrete Bridge Railing	18
Span 1	Wearing Surface	Epoxy Wearing Surface	Wearing Surface	438
Span 1	SW DELINEATOR	Delineator	Warning Signs	1
Span 1	SE DELINEATOR	Delineator	Warning Signs	1
Span 2	Deck	Reinforced Concrete Deck	Reinforced Concrete Deck	590
Span 2	Beam 1	Timber Joist	Timber Open Girder/Beam	19
Span 2	Beam 2	Timber Joist	Timber Open Girder/Beam	19
Span 2	Beam 3	Timber Joist	Timber Open Girder/Beam	19
Span 2	Beam 4	Timber Joist	Timber Open Girder/Beam	19
Span 2	Beam 5	Timber Joist	Timber Open Girder/Beam	19
Span 2	Beam 6	Timber Joist	Timber Open Girder/Beam	19
Span 2	Beam 7	Timber Joist	Timber Open Girder/Beam	19
Span 2	Beam 8	Timber Joist	Timber Open Girder/Beam	19
Span 2	Beam 9	Timber Joist	Timber Open Girder/Beam	19
Span 2	Beam 10	Timber Joist	Timber Open Girder/Beam	19
Span 2	Beam 11	Timber Joist	Timber Open Girder/Beam	19
Span 2	Beam 12	Timber Joist	Timber Open Girder/Beam	19
Span 2	Beam 13	Timber Joist	Timber Open Girder/Beam	19
Span 2	Beam 14	Timber Joist	Timber Open Girder/Beam	19
Span 2	Beam 15	Timber Joist	Timber Open Girder/Beam	19
Span 2	Beam 16	Timber Joist	Timber Open Girder/Beam	19
Span 2	Beam 17	Timber Joist	Timber Open Girder/Beam	19
Span 2	Beam 18	Timber Joist	Timber Open Girder/Beam	19



## Elements Verified

Location	Name	Component	Element Name	Amount
Span 2	Beam 19	Timber Joist	Timber Open Girder/Beam	19
Span 2	Beam 20	Timber Joist	Timber Open Girder/Beam	19
Span 2	Beam 21	Timber Joist	Timber Open Girder/Beam	19
Span 2	Beam 22	Timber Joist	Timber Open Girder/Beam	19
Span 2	Left Bridge Rail	Concrete Railing	Reinforced Concrete Bridge Railing	18
Span 2	Right Bridge Rail	Concrete Railing	Reinforced Concrete Bridge Railing	18
Span 2	Expansion Joint	Standard Joint	Pourable Joint Seal	35
Span 2	Wearing Surface	Asphalt Wearing Surface	Wearing Surface	428
Span 3	Deck	Reinforced Concrete Deck	Reinforced Concrete Deck	584
Span 3	Beam 1	Timber Joist	Timber Open Girder/Beam	18
Span 3	Beam 2	Timber Joist	Timber Open Girder/Beam	18
Span 3	Beam 3	Timber Joist	Timber Open Girder/Beam	18
Span 3	Beam 4	Timber Joist	Timber Open Girder/Beam	18
Span 3	Beam 5	Timber Joist	Timber Open Girder/Beam	18
Span 3	Beam 6	Timber Joist	Timber Open Girder/Beam	18
Span 3	Beam 7	Timber Joist	Timber Open Girder/Beam	18
Span 3	Beam 8	Timber Joist	Timber Open Girder/Beam	18
Span 3	Beam 9	Timber Joist	Timber Open Girder/Beam	18
Span 3	Beam 10	Timber Joist	Timber Open Girder/Beam	18
Span 3	Beam 11	Timber Joist	Timber Open Girder/Beam	18
Span 3	Beam 12	Timber Joist	Timber Open Girder/Beam	18
Span 3	Beam 13	Timber Joist	Timber Open Girder/Beam	18
Span 3	Beam 14	Timber Joist	Timber Open Girder/Beam	18
Span 3	Beam 15	Timber Joist	Timber Open Girder/Beam	18
Span 3	Beam 16	Timber Joist	Timber Open Girder/Beam	18
Span 3	Beam 17	Timber Joist	Timber Open Girder/Beam	18
Span 3	Beam 18	Timber Joist	Timber Open Girder/Beam	18
Span 3	Beam 19	Timber Joist	Timber Open Girder/Beam	18
Span 3	Beam 20	Timber Joist	Timber Open Girder/Beam	18
Span 3	Left Bridge Rail	Concrete Railing	Reinforced Concrete Bridge Railing	17
Span 3	Right Bridge Rail	Concrete Railing	Reinforced Concrete Bridge Railing	17
Span 3	Expansion Joint	Standard Joint	Pourable Joint Seal	35
Span 3	Wearing Surface	Epoxy Wearing Surface	Wearing Surface	423
Span 4	Deck	Reinforced Concrete Deck	Reinforced Concrete Deck	590
Span 4	Beam 1	Timber Joist	Timber Open Girder/Beam	19
Span 4	Beam 2	Timber Joist	Timber Open Girder/Beam	19
Span 4	Beam 3	Timber Joist	Timber Open Girder/Beam	19
Span 4	Beam 4	Timber Joist	Timber Open Girder/Beam	19
Span 4	Beam 5	Timber Joist	Timber Open Girder/Beam	19
Span 4	Beam 6	Timber Joist	Timber Open Girder/Beam	19
Span 4	Beam 7	Timber Joist	Timber Open Girder/Beam	19
Span 4	Beam 8	Timber Joist	Timber Open Girder/Beam	19
Span 4	Beam 9	Timber Joist	Timber Open Girder/Beam	19
Span 4	Beam 10	Timber Joist	Timber Open Girder/Beam	19
Span 4	Beam 11	Timber Joist	Timber Open Girder/Beam	19

## Elements Verified

Location	Name	Component	Element Name	Amount
Span 4	Beam 12	Timber Joist	Timber Open Girder/Beam	19
Span 4	Beam 13	Timber Joist	Timber Open Girder/Beam	19
Span 4	Beam 14	Timber Joist	Timber Open Girder/Beam	19
Span 4	Beam 15	Timber Joist	Timber Open Girder/Beam	19
Span 4	Beam 16	Timber Joist	Timber Open Girder/Beam	19
Span 4	Beam 17	Timber Joist	Timber Open Girder/Beam	19
Span 4	Beam 18	Timber Joist	Timber Open Girder/Beam	19
Span 4	Beam 19	Timber Joist	Timber Open Girder/Beam	19
Span 4	Beam 20	Timber Joist	Timber Open Girder/Beam	19
Span 4	Beam 21	Timber Joist	Timber Open Girder/Beam	19
Span 4	Beam 22	Timber Joist	Timber Open Girder/Beam	19
Span 4	Left Bridge Rail	Concrete Railing	Reinforced Concrete Bridge Railing	18
Span 4	Right Bridge Rail	Concrete Railing	Reinforced Concrete Bridge Railing	18
Span 4	Expansion Joint	Standard Joint	Pourable Joint Seal	35
Span 4	Wearing Surface	Epoxy Wearing Surface	Wearing Surface	428
Span 5	Deck	Reinforced Concrete Deck	Reinforced Concrete Deck	601
Span 5	Beam 1	Timber Joist	Timber Open Girder/Beam	19
Span 5	Beam 2	Timber Joist	Timber Open Girder/Beam	19
Span 5	Beam 3	Timber Joist	Timber Open Girder/Beam	19
Span 5	Beam 4	Timber Joist	Timber Open Girder/Beam	19
Span 5	Beam 5	Timber Joist	Timber Open Girder/Beam	19
Span 5	Beam 6	Timber Joist	Timber Open Girder/Beam	19
Span 5	Beam 7	Timber Joist	Timber Open Girder/Beam	19
Span 5	Beam 8	Timber Joist	Timber Open Girder/Beam	19
Span 5	Beam 9	Timber Joist	Timber Open Girder/Beam	19
Span 5	Beam 10	Timber Joist	Timber Open Girder/Beam	19
Span 5	Beam 11	Timber Joist	Timber Open Girder/Beam	19
Span 5	Beam 12	Timber Joist	Timber Open Girder/Beam	19
Span 5	Beam 13	Timber Joist	Timber Open Girder/Beam	19
Span 5	Beam 14	Timber Joist	Timber Open Girder/Beam	19
Span 5	Beam 15	Timber Joist	Timber Open Girder/Beam	19
Span 5	Beam 16	Timber Joist	Timber Open Girder/Beam	19
Span 5	Beam 17	Timber Joist	Timber Open Girder/Beam	19
Span 5	Beam 18	Timber Joist	Timber Open Girder/Beam	19
Span 5	Beam 19	Timber Joist	Timber Open Girder/Beam	19
Span 5	Beam 20	Timber Joist	Timber Open Girder/Beam	19
Span 5	Left Bridge Rail	Concrete Railing	Reinforced Concrete Bridge Railing	18
Span 5	Right Bridge Rail	Concrete Railing	Reinforced Concrete Bridge Railing	18
Span 5	Expansion Joint	Standard Joint	Pourable Joint Seal	35
Span 5	Wearing Surface	Epoxy Wearing Surface	Wearing Surface	435
Span 5	NW DELINEATOR	Delineator	Warning Signs	1
Span 5	NE DELINEATOR	Delineator	Warning Signs	1
Bent 1	Cap	Timber Pier Cap	Timber Pier Cap	35
Bent 1	Pile 1	Timber Pile	Timber Pile	1
Bent 1	Pile 2	Timber Pile	Timber Pile	1

## Elements Verified

Location	Name	Component	Element Name	Amount
Bent 1	Pile 3	Timber Pile	Timber Pile	1
Bent 1	Pile 4	Timber Pile	Timber Pile	1
Bent 1	Pile 5	Timber Pile	Timber Pile	1
Bent 1	Pile 6	Timber Pile	Timber Pile	1
Bent 1	SUB CAP	Timber Sub Cap	Sub Cap Element	1
End Bent 1	Cap	Timber Pier Cap	Timber Pier Cap	35
End Bent 1	Pile 1	Timber Pile	Timber Pile	1
End Bent 1	Pile 2	Timber Pile	Timber Pile	1
End Bent 1	Pile 3	Timber Pile	Timber Pile	1
End Bent 1	Pile 4	Timber Pile	Timber Pile	1
End Bent 1	Pile 5	Timber Pile	Timber Pile	1
End Bent 1	Pile 6	Timber Pile	Timber Pile	1
End Bent 1	Abutment	Other Abutment	Other Abutments	40
End Bent 1	SUB CAP	Timber Sub Cap	Sub Cap Element	1
Bent 2	Cap	Timber Pier Cap	Timber Pier Cap	35
Bent 2	Pile 1	Timber Pile	Timber Pile	1
Bent 2	Pile 2	Timber Pile	Timber Pile	1
Bent 2	Pile 3	Timber Pile	Timber Pile	1
Bent 2	Pile 4	Timber Pile	Timber Pile	1
Bent 2	Pile 5	Timber Pile	Timber Pile	1
Bent 2	Pile 6	Timber Pile	Timber Pile	1
Bent 2	SUB CAP	Timber Sub Cap	Sub Cap Element	1
End Bent 2	Cap	Timber Pier Cap	Timber Pier Cap	35
End Bent 2	Pile 1	Timber Pile	Timber Pile	1
End Bent 2	Pile 2	Timber Pile	Timber Pile	1
End Bent 2	Pile 3	Timber Pile	Timber Pile	1
End Bent 2	Pile 4	Timber Pile	Timber Pile	1
End Bent 2	Pile 5	Timber Pile	Timber Pile	1
End Bent 2	Pile 6	Timber Pile	Timber Pile	1
End Bent 2	SUB CAP	Timber Sub Cap	Sub Cap Element	1
Bent 3	Cap	Timber Pier Cap	Timber Pier Cap	35
Bent 3	Pile 1	Timber Pile	Timber Pile	1
Bent 3	Pile 2	Timber Pile	Timber Pile	1
Bent 3	Pile 3	Timber Pile	Timber Pile	1
Bent 3	Pile 4	Timber Pile	Timber Pile	1
Bent 3	Pile 5	Timber Pile	Timber Pile	1
Bent 3	Pile 6	Timber Pile	Timber Pile	1
Bent 3	SUB CAP	Timber Sub Cap	Sub Cap Element	1
Bent 4	Cap	Timber Pier Cap	Timber Pier Cap	35
Bent 4	Pile 1	Timber Pile	Timber Pile	1
Bent 4	Pile 2	Timber Pile	Timber Pile	1
Bent 4	Pile 3	Timber Pile	Timber Pile	1
Bent 4	Pile 4	Timber Pile	Timber Pile	1
Bent 4	Pile 5	Timber Pile	Timber Pile	1
Bent 4	Pile 6	Timber Pile	Timber Pile	1

## Elements Verified

Location	Name	Component	Element Name	Amount
Bent 4	SUB CAP	Timber Sub Cap	Sub Cap Element	1

---

# General Inspection Notes

Bent 1                      SUB CAP

SUBCAP IS IN FAIR CONDITION WITH CHECKS TO .125 INCH WIDE AND .25 INCH ON ENDS, SOFT TO .50 INCH ON ENDS.

---

Bent 2                      SUB CAP

SUBCAP IS IN FAIR CONDITION WITH CHECKS TO .125 INCH WIDE AND .25 INCH ON ENDS, SOFT TO .50 INCH ON ENDS.

---

Bent 3                      SUB CAP

SUBCAP IS IN FAIR CONDITION WITH CHECKS TO .125 INCH WIDE AND .25 INCH ON ENDS, SOFT TO .50 INCH ON ENDS.

---

Bent 4                      SUB CAP

SUBCAP IS IN FAIR CONDITION WITH CHECKS TO .125 INCH WIDE AND .25 INCH ON ENDS, SOFT TO .50 INCH ON ENDS.

---

# National Bridge and NC Inspection Items

Structure Number: 270008

Inspection Date: 06/01/2023

## National Bridge Inventory Items

Item	Grade Scale	Grade
Item 58: Deck	0 - 9 , N	7
Item 59: Superstructure	0 - 9 , N	5
Item 60: Substructure	0 - 9 , N	3
Item 61: Channel and Channel Protection	0 - 9 , N	7
Item 62: Culvert	0 - 9 , N	N
Item 71: Waterway Adequacy	0 - 9 , N	7
Item 72: Approach Roadway Alignment	0 - 9 , N	8

**Note:**  
Items 58,59,60,62 reflect this inspection only.  
  
For overall NBI coding grade, see cover sheet.

Note: If NBI Inspection Item is not present, code NBI item with "N"

## NC SMU Inspection Items

Item	Grade Scale	Grade	Maint. Qty.	Maint. Code
Deck Debris	G, F, P, or C	G	0	3376
Drainage System	G, F, P, or C	G	0	3332
Utilities	G, F, P, or C	G		
Slope Protection	G, F, P, or C	G	0	3352
Scour	G, F, P, or C	G		
Wingwall	G, F, P, or C			
Field Scour Evaluation		P		
Drift	G, F, P, or C	F	20	3366
Fender System	G, F, P, or C		0	3364
Movable Span Machinery	G, F, P, or C			
Response to Live Load	G, F, P, or C	G		
Superstructure Paint Code				

Note: If NC SMU Inspection Item is not present, leave NC SMU item blank

## Inspection Information

Item	Grade Scale	Grade
Sign Noticed Issued	YES/NO	N
Priority Maintenance Request Submitted	YES/NO	Y
Inspection Time	Hours	8
Traffic Control Time	Hours	0
Snooper Time	Hours	0
Ladder Used	YES/NO	N
Bucket Truck Used	YES/NO	N
Boat Used	YES/NO	N
Other Equipment Used	YES/NO	Y
Portion of Structure in > 3' of water	YES/NO	Y

# National Bridge and NC SMU Inspection Item Details

**Structure Number:** 270008

**Inspection Date:** 06/01/2023

<b>Item</b>	Deck - Item 58	<b>Grade</b> 7	<b>Maint Code</b>	<b>Qty.</b> 0
<b>Details</b>	TOP COVERED WITH EPOXY WEARING SURFACE AND BOTTOM COVERED WITH WIRE AND PAPER.			
<b>Item</b>	Superstructure - Item 59	<b>Grade</b> 5	<b>Maint Code</b>	<b>Qty.</b> 0
<b>Details</b>	BEAMS HAVE CHECKS TO 0.125 INCH WIDE, SOFT TO .5 INCH DEEP ON ENDS. RAILINGS HAVE RANDOM HAIRLINE CRACKS AND SCALING TO .125 INCH. PARS ISSUED FOR DECAY ON ENDS OF SEVERAL BEAMS.			
<b>Item</b>	Substructure - Item 60	<b>Grade</b> 3	<b>Maint Code</b>	<b>Qty.</b> 0
<b>Details</b>	PILES ARE JACKETED WITH CONCRETE FROM 1 FOOT ABOVE MUDLINE TO 8 - 10 INCHES BELOW CAP. CONCRETE JACKET REPAIR IS IN POOR CONDITION WITH LIMITED COVERAGE.  TIMBER PILES HAVE CHECKS TO .125 AND SOFT TO .500  BENT 2 SIDEWALK CAP (OVER BENT CAP) DECAYED 12 INCHES TALL X 4 INCHES WIDE X 4 INCHES DEEP REPAIRED WITH A METAL PLATE.			
<b>Item</b>	Channel and Channel Protection - Item 61	<b>Grade</b> 7	<b>Maint Code</b>	<b>Qty.</b> 0
<b>Details</b>	OLD SUBSTUCTURE IN WATERWAY.			
<b>Item</b>	Priority Maintenance Issued	<b>Grade</b> Y	<b>Maint Code</b>	<b>Qty.</b> 0
<b>Details</b>	PARS ISSUED FOR DECAY ON END OF BEAMS AND CAPS.  PREVIOUS PARS FOR DECAYED RETAINING PILES HAVE BEEN REPAIRED.			
<b>Item</b>	Other Equipment Used	<b>Grade</b> Y	<b>Maint Code</b>	<b>Qty.</b> 0
<b>Details</b>	DRYSUIT			
<b>Item</b>	Drift	<b>Grade</b> F	<b>Maint Code</b> 3366	<b>Qty.</b> 20
<b>Details</b>	OLD SUBSTRUCTURE IN WATERWAY.			
<b>Item</b>	Portion of structure in > 3' of water (Y or N)	<b>Grade</b> Y	<b>Maint Code</b>	<b>Qty.</b> 0
<b>Details</b>	BENTS 1 - 4			



Span 1 Wearing Surface: CRACKED TO .50 INCH, SPALLED TO 3 INCHES WIDE X FULL WIDTH OF ROADWAY OVER END BENT 1.



Span 1 Left Bridge Rail: CRACKED TO .062 INCH AND DELAMINATED ALONG INSIDE OF TOP RAIL X FULL LENGTH OF SPAN.





Span 1 Left Bridge Rail: PATCHED AREAS ON RAIL POST 1 2 AND 3.



SCALING TO .125 INCH ON RAILS



Span 2 Left Bridge Rail: PAR: RAIL OVER POST 3 HAS A 2 INCH X 3 INCH CORNER SPALL EXPOSING REINFORCING STEEL. AREA HAS BEEN REPAIRED



Span 2 Expansion Joint: JOINT HAS A 1 INCH GAP WHERE JOINT MATERIAL IS MISSING, ALLOWING WATER TO DRAIN ON SUPERSTRUCTURE AND SUBSTRUCTURE COMPONENTS.



Span 3 Left Bridge Rail: PAR: RAIL POST 2 HAS A FAILED PATCH WITH EXPOSED REINFORCING STEEL 2 INCH DIAMETER. AREA HAS BEEN REPAIRED.



Span 3 Deck: PAR- 4 INCH DIAMETER HOLE THROUGH DECK IN SOUTH BOUND LANE.



Span 5 Wearing Surface: CRACKED TO .50 INCH, SPALLED TO 1 INCH X FULL WIDTH OF ROADWAY OVER END BENT 2.



End Bent 1 Cap 1: PAR: EAST END DECAYED FROM END BACK 16 INCHES, 5 INCHES TALL X 2 INCHES WIDE .



Bent 1 Cap: SUBCAP HAS DECAY ON EAST END TOP CORNER, 4 INCH DIAMETER X 14 INCHES DEEP



Span 1 Beam 3: PAR- DECAYED ON END OVER BENT 1, 4 INCHES TALL X 6 INCHES WIDE X 5 INCHES DEEP.



Span 1 Beam 10: PAR- DECAYED ON END OVER BENT 1, 4 INCHES TALL X 6 INCHES WIDE X 5 INCHES DEEP.



Span 1 Beam 11: PAR- DECAYED ON END OVER BENT 1, 5 INCHES TALL X 6 INCHES WIDE X 6 INCHES DEEP.



Span 1 Beam 13: PAR- DECAYED ON END OVER BENT 1, 4 INCHES TALL X 6 INCHES WIDE X 5 INCHES DEEP.



Bent 1 Pile 1: PAR: X-BRACING DECAYED AND DETACHED FROM PILE.



RUST AND SCALE ON SHEET PILE OLD TIMBER ABUTMENT. BOTH END BENT 1 AND 2.



ALL CAPS HAVE CHECKS TO .125 INCH WIDE AND .25 INCH ON ENDS, SOFT TO .50 INCH ON ENDS.





CONCRETE JACKET REPAIRS ARE IN POOR CONDITION WITH LIMITED COVERAGE. ALL PILES HAVE CHECKS TO .125 INCH WIDE, SOFT TO .50 INCH DEEP WHERE TIMBER PILE IS EXPOSED.



PREVIOUS PAR ADDRESSED. ALL RETAINING PILES HAVE BEEN ENCASED IN CONCRETE.



End Bent 1 Cap: PAR- PEDESTRAIN WALKWAY SUBCAP HAS DECAY ON THE EAST END CENTER OF CAP. 8 INCH DIAMETER X 4 INCHES DEEP



ALL PILES ARE JACKETED WITH CONCRETE FROM 1 FOOT ABOVE MUDLINE TO 8-10 INCHES BELOW CAP. CONCRETE JACKET REPAIRS ARE IN POOR CONDITION WITH LIMITED COVERAGE.



Bent 2 Cap: PEDESTRAIN WALKWAY SUBCAP HAS BEEN REPAIRED WITH A STEEL SPLICE PLATE.



Bent 3 Cap: PAR: PEDESTRAIN WALKWAY SUBCAP HAS DECAY ON EAST END IN CENTER. 9 INCH DIAMETER X 9 INCHES DEEP.



Bent 4 Cap: PAR: EAST END OF CAP AT CENTER, DECAYED AREA 8 INCH DIAMETER X 13 INCHES DEEP.



Bent 4 Cap: PAR: BENT 4 SUBCAP WEST END HAS AN AREA OF DECAY 6 INCH DIAMETER X 6 INCHES DEEP.



OPEN AREA ON EXPANSION JOINT ALLOWING DEBRIS AND WATER LEAKAGE THROUGH.



EXTERIOR JOISTS HAVE CHECKS TO .25 INCH WIDE, WEATHERED, AND SOFT TO .50 INCH DEEP



OLD SUBSTRUCTURE IN WATERWAY



VINYL SHEETING HAS BEEN DRIVEN BEHIND SOUTH EAST TIMBER ABUTMENT. GOOD CONDITION

# Stream Bed Soundings

(Profile diagram on following sheet)

County **DARE**

Structure Number: **270008**

Sounding Date **06/12/2023**

Sounding recorded from: **Top of Bridge Rail**

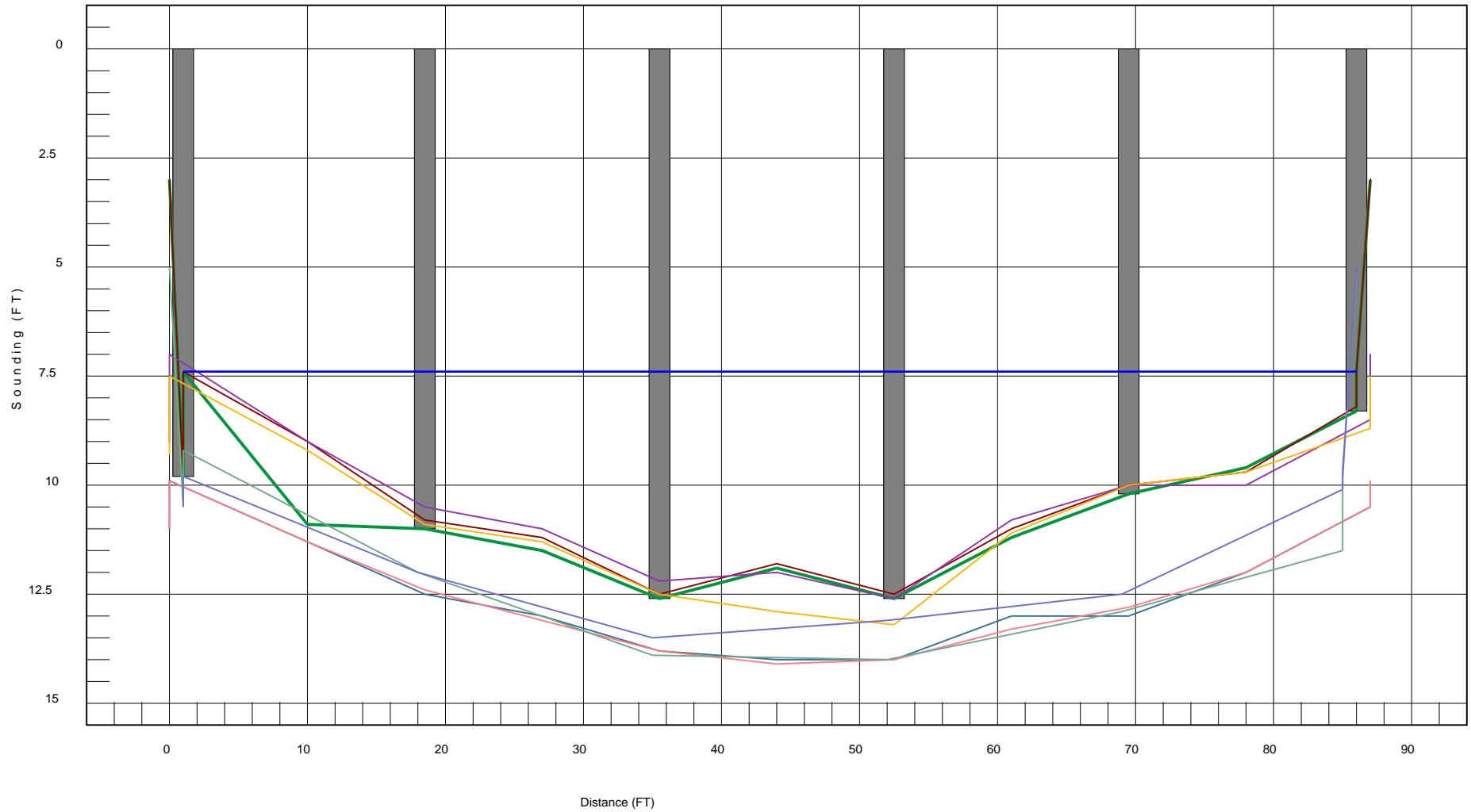
Highwater Mark Distance **7**

Location of Highwater Mark **ON PILES**

Distance (Station) ft.	Downstream Sounding ft.	Upstream Sounding ft.	Description
0.000	3.000	3.000	FILL FACE
1.000	7.400	7.400	WS
1.000	9.800	8.000	END BENT 1
10.000	10.900	0.000	SPAN 1
18.500	11.000	10.200	BENT 1
27.000	11.500	0.000	SPAN 2
35.500	12.600	11.000	BENT 2
44.000	11.900	0.000	SPAN 3
52.500	12.600	11.400	BENT 3
61.000	11.200	0.000	SPAN 4
69.500	10.200	10.100	BENT 4
78.000	9.600	0.000	SPAN 5
86.000	7.400	7.400	WS
86.000	8.300	7.700	END BENT 2
87.000	3.000	3.000	FILL FACE

### STREAMBED PROFILE (Downstream)

Top of Rail = 0FT (Sounding)



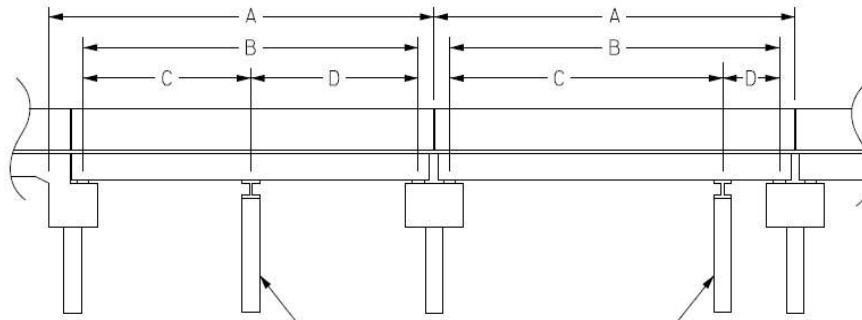


# Structure Data Worksheet

## Span Profile

County: **DARE**

Structure Number: **270008**

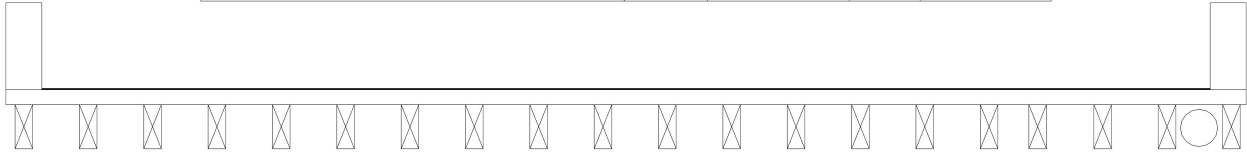


A: SPAN LENGTH  
 B: BEARING TO BEARING  
 C: DISTANCE FROM NEAR BEARING  
 D: DISTANCE TO FAR BEARING

Span Number	Span Length	Bearing to Bearing	Crutch/ Helper Bent	Distance to Near Bearing	Distance to Far Bearing
1	17.500	17.000			
2	17.100	17.100			
3	16.900	16.900			
4	17.100	17.100			
5	17.400	16.900			

# Bridge Inspection Field Sketch

Deck Width/Out to Out	34.5ft	Between Rails	33.833ft	
Clear Roadway	27.667ft	Wearing Surface	0.375in	
Median Width		Median Height		
Curb Height		Left	9in	Right 9in
Sidewalk Width		Left		Right
Clear Roadway (Rail to Median)		Left		Right
Guardrail Width		Left	6in	Right 6in
Top of Rail to Deck/Wearing Surface		Left	2.386ft	Right 2.386ft
Bridge Rail Type		Left	Type 15	Right Type 15



Measurements for Span #	1		
Deck Thickness	5in	Left Overhang	0.416ft
Top of Rail to Bottom of Beam (Avg)	4.063ft	Right Overhang	5ft

8 INCH  
UTILITY PIPELINE

Beam #	Beam Type	Width	Height	Spacing	From
1	Timber Joist	5.875in	14.75in	0.5ft	Left Edge of Deck
2	Timber Joist	5.875in	14.75in	1.79ft	Beam 1
3	Timber Joist	5.875in	14.75in	1.79ft	Beam 2
4	Timber Joist	5.875in	14.75in	1.79ft	Beam 3
5	Timber Joist	5.875in	14.75in	1.79ft	Beam 4
6	Timber Joist	5.875in	14.75in	1.79ft	Beam 5
7	Timber Joist	5.875in	14.75in	1.79ft	Beam 6
8	Timber Joist	5.875in	14.75in	1.79ft	Beam 7
9	Timber Joist	5.875in	14.75in	1.79ft	Beam 8
10	Timber Joist	5.875in	14.75in	1.79ft	Beam 9
11	Timber Joist	5.875in	14.75in	1.79ft	Beam 10
12	Timber Joist	5.875in	14.75in	1.79ft	Beam 11
13	Timber Joist	5.875in	14.75in	1.79ft	Beam 12
14	Timber Joist	5.875in	14.75in	1.79ft	Beam 13
15	Timber Joist	5.875in	14.75in	1.79ft	Beam 14
16	Timber Joist	5.875in	14.75in	1.79ft	Beam 15
17	Timber Joist	5.875in	14.75in	1.35ft	Beam 16
18	Timber Joist	5.875in	14.75in	1.81ft	Beam 17
19	Timber Joist	5.875in	14.75in	1.79ft	Beam 18
20	Timber Joist	5.875in	14.75in	1.79ft	Beam 19

Title  
SUPERSTRUCTURE 1

Description  
SPANS 1, 3 AND 5

Structure No: 270008

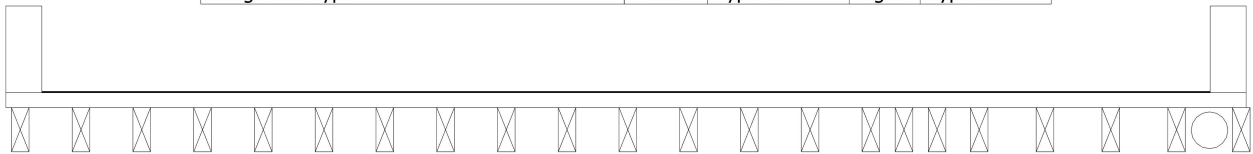
Drawn By: C.A

Date: 5/10/2023

Filename: S00000011285.wes

# Bridge Inspection Field Sketch

Deck Width/Out to Out	34.5ft	Between Rails	33.83ft
Clear Roadway	27.667ft	Wearing Surface	0.375in
Median Width		Median Height	
Curb Height		Left	6in
		Right	6in
Sidewalk Width		Left	
		Right	
Clear Roadway (Rail to Median)		Left	
		Right	
Guardrail Width		Left	9in
		Right	9in
Top of Rail to Deck/Wearing Surface		Left	2.379ft
		Right	2.379ft
Bridge Rail Type		Left	Type 15
		Right	Type 15



Measurements for Span #	2		
Deck Thickness	5in	Left Overhang	0.4ft
Top of Rail to Bottom of Beam (Avg)	4.056ft	Right Overhang	0.5ft

8 INCH  
UTILITY PIPELINE

Beam #	Beam Type	Width	Height	Spacing	From
1	Timber Joist	5.875in	14.75in	0.4ft	Left Edge of Deck
2	Timber Joist	5.875in	14.75in	1.69ft	Beam 1
3	Timber Joist	5.875in	14.75in	1.69ft	Beam 2
4	Timber Joist	5.875in	14.75in	1.69ft	Beam 3
5	Timber Joist	5.875in	14.75in	1.69ft	Beam 4
6	Timber Joist	5.875in	14.75in	1.69ft	Beam 5
7	Timber Joist	5.875in	14.75in	1.69ft	Beam 6
8	Timber Joist	5.875in	14.75in	1.69ft	Beam 7
9	Timber Joist	5.875in	14.75in	1.69ft	Beam 8
10	Timber Joist	5.875in	14.75in	1.69ft	Beam 9
11	Timber Joist	5.875in	14.75in	1.69ft	Beam 10
12	Timber Joist	5.875in	14.75in	1.69ft	Beam 11
13	Timber Joist	5.875in	14.75in	1.69ft	Beam 12
14	Timber Joist	5.875in	14.75in	1.69ft	Beam 13
15	Timber Joist	5.875in	14.75in	1.69ft	Beam 14
16	Timber Joist	5.875in	14.75in	0.922ft	Beam 15
17	Timber Joist	5.875in	14.75in	0.922ft	Beam 16
18	Timber Joist	5.875in	14.75in	1.17ft	Beam 17
19	Timber Joist	5.875in	14.75in	1.83ft	Beam 18
20	Timber Joist	5.875in	14.75in	1.83ft	Beam 19
21	Timber Joist	5.875in	14.75in	1.83ft	Beam 20
22	Timber Joist	5.875in	14.75in	1.8ft	Beam 21

Title  
SUPERSTRUCTURE 2

Description  
SPAN 2, AND 4

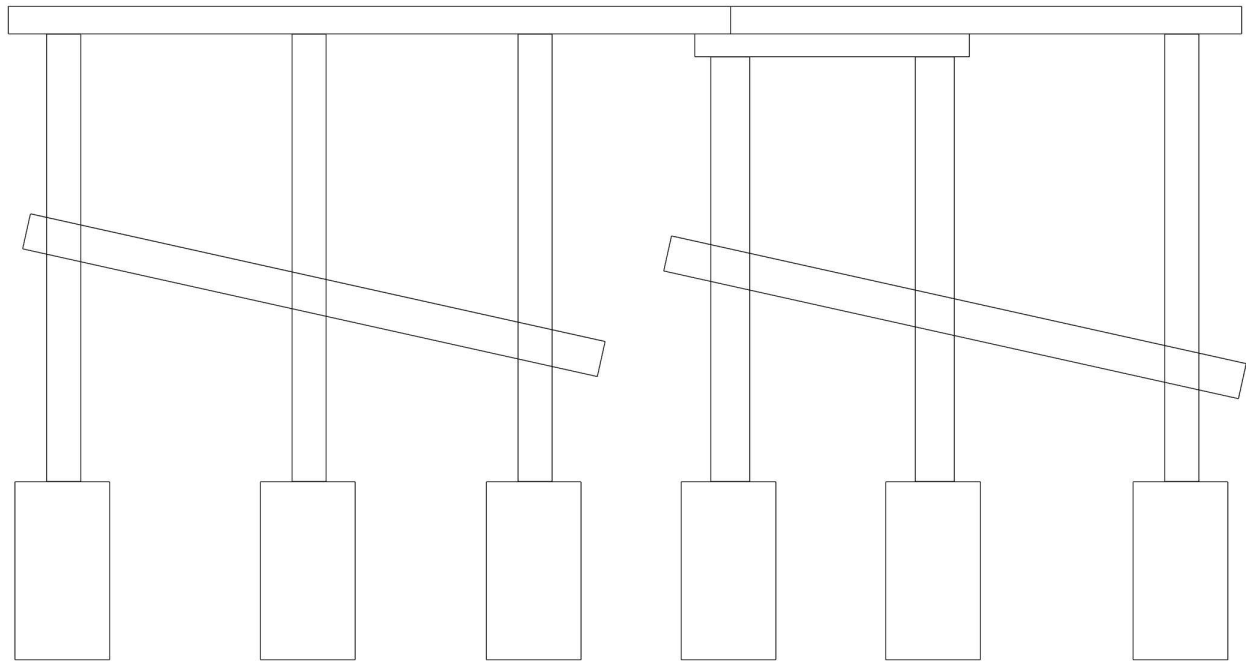
Structure No: 270008

Drawn By: C.A

Date: 5/10/2023

Filename: S00000011288.wes

# Bridge Inspection Field Sketch



Caps							
#	Name	Type	Length	Width	Height	Left Beam to End of Cap	Right Beam to End of Cap
1	Cap 1	Timber Pier Cap	27.083ft	12in	12in	0.5ft	0.5ft
2	Cap 2	Timber Pier Cap	17.83ft	12in	12in	0ft	0ft

Subcaps							
Row	#	Name	Type	Length	Width	Height	Left End of Bent to Left End of Subcap
2	1	Sub Cap 1	Timber Sub Cap	10ft	9in	10in	25ft

Piles							
#	Name	Type	Spacing	From	Height/Diam.	Width	Length
1	Pile 1	Timber Pile	0.5ft	Left End of Bent	12in		10ft
2	Pile 2	Timber Pile	6.42ft	Pile 1	12in		10ft
3	Pile 3	Timber Pile	6.42ft	Pile 2	12in		10ft
4	Pile 4	Timber Pile	6.42ft	Pile 3	12in		10ft
5	Pile 5	Timber Pile	6.42ft	Pile 4	12in		10ft
6	Pile 6	Timber Pile	0.5ft	Pile 5	12in		10ft

Title SUBSTRUCTURE		Description BENTS 1-4			
Structure No: 270008	Drawn By: C.A	Date: 5/15/2023	Filename: S00000011342.wes		

# Bridge Inspection Field Sketch

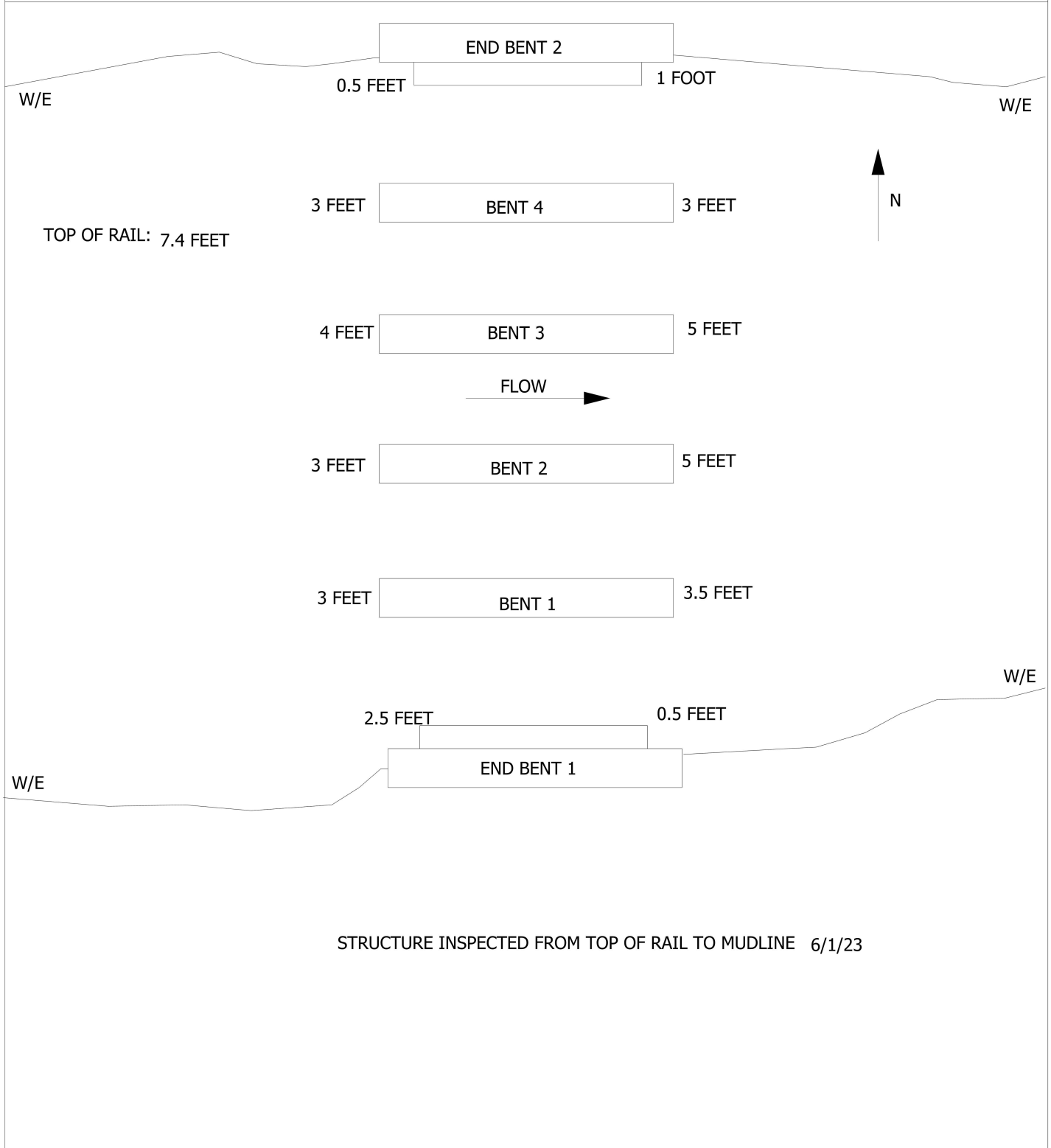


MEASUREMENT TAKEN 40' SOUTH OF STRUCTURE

Roadway	025ft Wide	2 Paved Lanes	Looking North
Left Shoulder	10ft Wide		010ft Unpaved
Right Shoulder	5ft Wide		05ft Unpaved
Left Guardrail			
Right Guardrail			

Title APPROACH ROADWAY		Description APPROACH ROADWAY	
Structure No: 270008	Drawn By: C.A	Date: 5/15/2023	Filename: S000000011343.wes

# Bridge Inspection Field Sketch



STRUCTURE INSPECTED FROM TOP OF RAIL TO MUDLINE 6/1/23

Title CHANNEL PLAN VIEW		Description CHANNEL PLAN VIEW	
Structure No: 270008	Drawn By: C.A	Date: 5/15/2023	Filename: S000000011357.wes



LOOKING SOUTH



LOOKING EAST



LOOKING WEST



WEST PROFILE





LOOKING NORTH



EAST PROFILE



SOUTH APPROACH



NORTH APPROACH



EPOXY WEARING SURFACE OVERVIEW



RAILING DETAIL



END BENT 1



BOTTOM OF DECK SPAN 1



BOTTOM OF DECK COVERED IN WIRE AND PAPER



BENT 1 (ALL BENTS SIMILAR)



BOTTOM OF DECK SPAN 2



BOTTOM OF DECK SPAN 3



BOTTOM OF DECK SPAN 4



BOTTOM OF DECK SPAN 5



END BENT 2



END BENT 2





EPOXY WEARING SURFACE IS .375 INCH THICK