

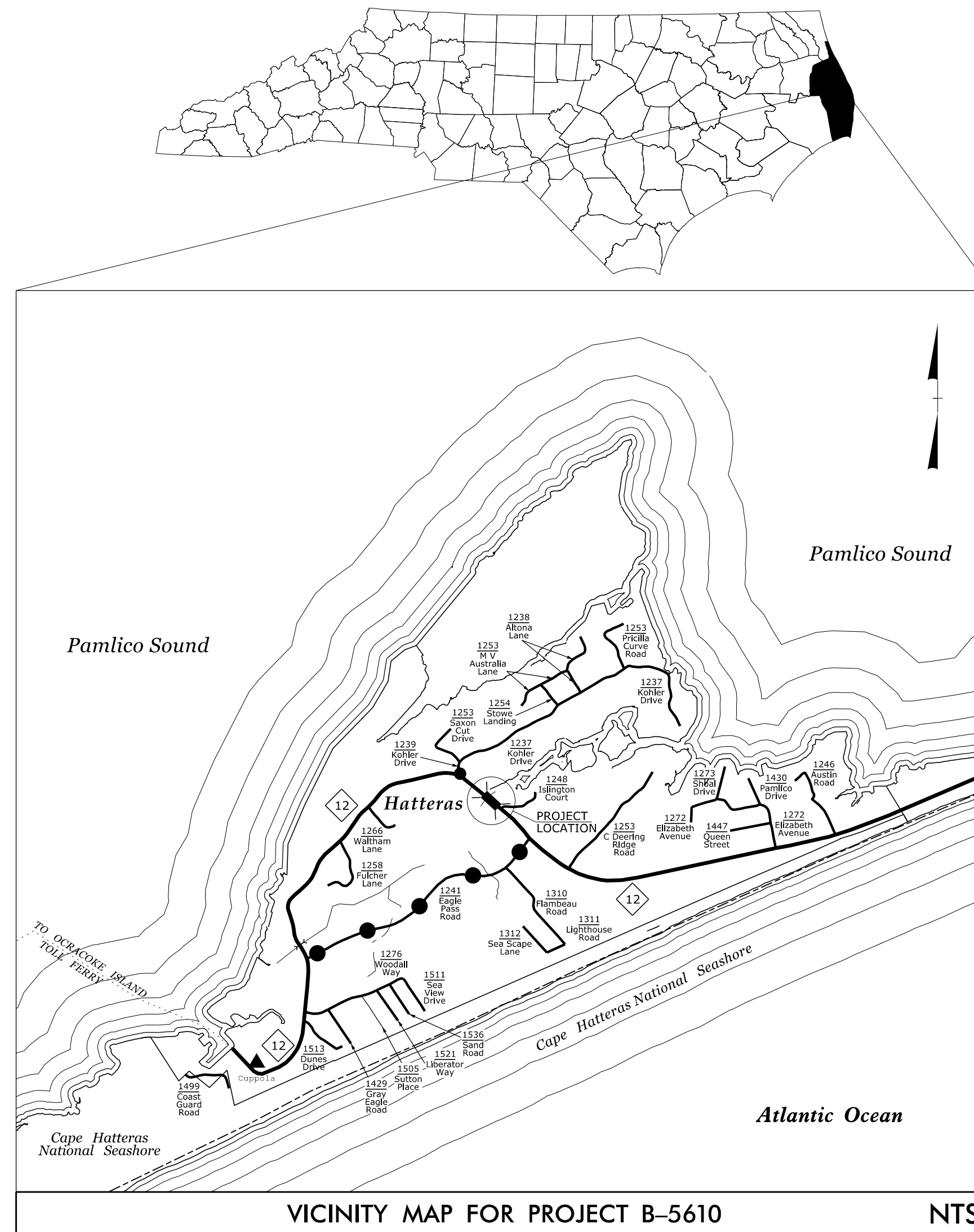
STATE OF NORTH CAROLINA
DIVISION OF HIGHWAYS

TRANSPORTATION MANAGEMENT PLAN

DARE COUNTY

LOCATION: REPLACE BRIDGE #270008 OVER THE SLASH CREEK ON NC-12

TYPE OF WORK: GRADING, DRAINAGE, PAVING, AND STRUCTURE



VICINITY MAP FOR PROJECT B-5610

NTS

Off-Site Detour

INDEX OF SHEETS

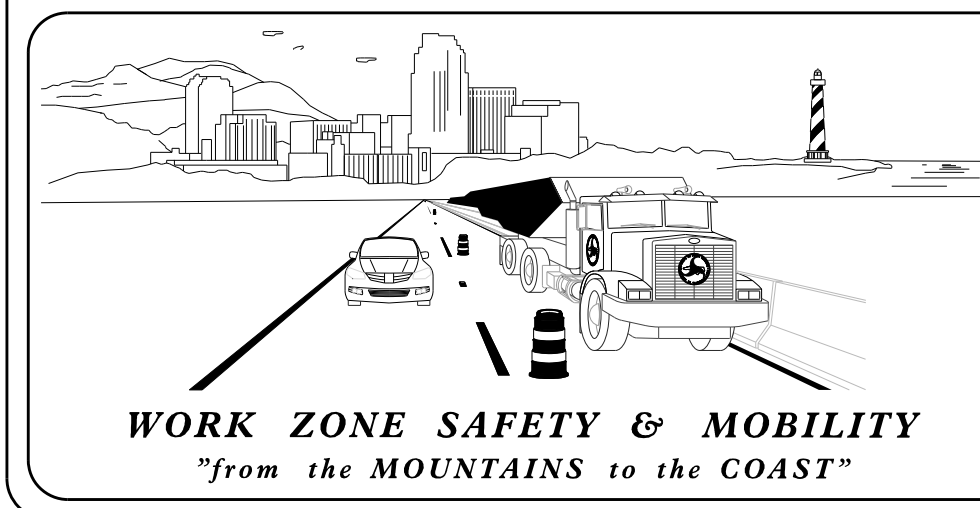
SHEET NO.	TITLE
TMP-1	TITLE SHEET, VICINITY MAP, AND INDEX OF SHEETS
TMP-1A	LIST OF APPLICABLE ROADWAY STANDARD DRAWINGS, AND LEGEND
TMP-1B	TRANSPORTATION OPERATIONS PLAN: (MANAGEMENT STRATEGIES, GENERAL NOTES, LOCAL NOTES AND PHASING)
TMP-2	OFF-SITE DETOUR

SHEET NO.
TMP-1

B-5610

TIP PROJECT:

**DOCUMENT NOT CONSIDERED FINAL
UNLESS ALL SIGNATURES COMPLETED**



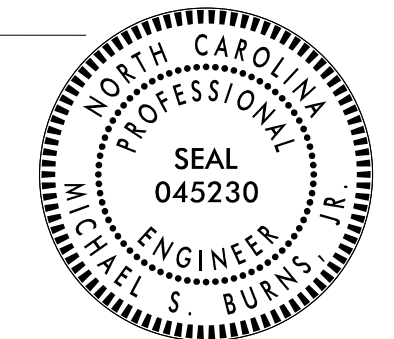
PLANS PREPARED BY:
MICHAEL BURNS, PE
ANDY YOUNG, PE

NCDOT CONTACTS:
ALLA LYUDMIRSKAYA
PROJECT ENGINEER



APPROVED: Michael S. Burns, Jr.
DATE: 4/5/2024

SEAL



\$\$\$\$\$SYTIME\$\$\$\$\$
\$\$\$\$\$DGN\$\$\$\$\$
\$\$\$\$\$USERNAME\$\$\$\$\$

ROADWAY STANDARD DRAWINGS

THE FOLLOWING ROADWAY STANDARDS AS SHOWN IN "ROADWAY STANDARD DRAWINGS" - N.C. DEPARTMENT OF TRANSPORTATION - RALEIGH, N.C., DATED JANUARY 2024 ARE APPLICABLE TO THIS PROJECT AND BY REFERENCE HEREBY ARE CONSIDERED A PART OF THESE PLANS:

<u>STD. NO.</u>	<u>TITLE</u>
1101.02	TEMPORARY LANE CLOSURES
1101.03	TEMPORARY ROAD CLOSURES
1101.04	TEMPORARY SHOULDER CLOSURES
1101.11	TRAFFIC CONTROL DESIGN TABLES
1110.01	STATIONARY WORK ZONE SIGNS
1110.02	PORTABLE WORK ZONE SIGNS
1130.01	DRUM
1135.01	CONES
1145.01	BARRICADES - TYPE III
1150.01	FLAGGING DEVICES
1180.01	SKINNY DRUM

LEGEND

GENERAL

- DIRECTION OF TRAFFIC FLOW
- DIRECTION OF PEDESTRIAN TRAFFIC FLOW
- EXIST. PVMT.
- NORTH ARROW
- PROPOSED PVMT.
- TEMP. SHORING (LOCATION PURPOSES ONLY)

WORK AREA

REMOVAL

SIGNALS

- EXISTING
- PROPOSED
- TEMPORARY

PAVEMENT MARKINGS

- EXISTING LINES
- TEMPORARY LINES

TRAFFIC CONTROL DEVICES

- BARRICADE (TYPE III)
- CONE
- DRUM SKINNY DRUM TUBULAR MARKER
- TEMPORARY CRASH CUSHION
- FLASHING ARROW BOARD
- FLAGGER
- LAW ENFORCEMENT
- TRUCK MOUNTED ATTENUATOR (TMA)
- CHANGEABLE MESSAGE SIGN

TEMPORARY SIGNING

- PORTABLE SIGN
- STATIONARY SIGN
- STATIONARY OR PORTABLE SIGN

PAVEMENT MARKERS

- CRYSTAL/CRYSTAL
- CRYSTAL/RED
- YELLOW/YELLOW

PAVEMENT MARKING SYMBOLS

- PAVEMENT MARKING SYMBOLS

Firm License No. C-1051
223 S. West St.
Suite 1100
Raleigh, NC 27603
T 919.380.8750
www.stewartinc.com

APPROVED: *Michael S. Burns, Jr.*

DATE: 4/5/2024

SEAL

DOCUMENT NOT CONSIDERED FINAL
UNLESS ALL SIGNATURES COMPLETED

ROADWAY STANDARD DRAWINGS & LEGEND

GENERAL NOTES

CHANGES MAY BE REQUIRED WHEN PHYSICAL DIMENSIONS IN THE DETAIL DRAWINGS, STANDARD DETAILS, AND ROADWAY DETAILS ARE NOT ATTAINABLE TO MEET FIELD CONDITIONS OR RESULT IN DUPLICATE OR UNDESIRED OVERLAPPING OF DEVICES. MODIFICATION MAY INCLUDE: MOVING, SUPPLEMENTING, COVERING, OR REMOVAL OF DEVICES AS DIRECTED BY THE ENGINEER.

THE FOLLOWING GENERAL NOTES APPLY AT ALL TIMES FOR THE DURATION OF THE CONSTRUCTION PROJECT EXCEPT WHEN OTHERWISE NOTED IN THE PLAN OR DIRECTED BY THE ENGINEER.

LANE AND SHOULDER CLOSURE REQUIREMENTS

- A) REMOVE LANE CLOSURE DEVICES FROM THE LANE WHEN WORK IS NOT BEING PERFORMED BEHIND THE LANE CLOSURE OR WHEN A LANE CLOSURE IS NO LONGER NEEDED OR AS DIRECTED BY THE ENGINEER.
- B) WHEN PERSONNEL AND/OR EQUIPMENT ARE WORKING WITHIN 15 FT OF AN OPEN TRAVEL LANE, CLOSE THE NEAREST OPEN SHOULDER USING ROADWAY STANDARD DRAWING NO. 1101.04 UNLESS THE WORK AREA IS PROTECTED BY BARRIER OR GUARDRAIL OR A LANE CLOSURE IS INSTALLED.
- C) WHEN PERSONNEL AND/OR EQUIPMENT ARE WORKING ON THE SHOULDER ADJACENT TO AN UNDIVIDED FACILITY AND WITHIN 5 FT OF AN OPEN TRAVEL LANE, CLOSE THE NEAREST OPEN TRAVEL LANE USING ROADWAY STANDARD DRAWING NO. 1101.02 UNLESS THE WORK AREA IS PROTECTED BY BARRIER OR GUARDRAIL.

WHEN PERSONNEL AND/OR EQUIPMENT ARE WORKING ON THE SHOULDER ADJACENT TO A DIVIDED FACILITY AND WITHIN 10 FT OF AN OPEN TRAVEL LANE, CLOSE THE NEAREST OPEN TRAVEL LANE USING ROADWAY STANDARD DRAWING NO. 1101.02 UNLESS THE WORK AREA IS PROTECTED BY BARRIER OR GUARDRAIL.

- D) WHEN PERSONNEL AND/OR EQUIPMENT ARE WORKING WITHIN A LANE OF TRAVEL OF AN UNDIVIDED OR DIVIDED FACILITY, CLOSE THE LANE ACCORDING TO THE TRAFFIC CONTROL PLANS, ROADWAY STANDARD DRAWINGS, OR AS DIRECTED BY THE ENGINEER. CONDUCT THE WORK SO THAT ALL PERSONNEL AND/OR EQUIPMENT REMAIN WITHIN THE CLOSED TRAVEL LANE.

PAVEMENT EDGE DROP OFF REQUIREMENTS

- E) BACKFILL AT A 6:1 SLOPE UP TO THE EDGE AND ELEVATION OF EXISTING PAVEMENT IN AREAS ADJACENT TO AN OPENED TRAVEL LANE THAT HAS AN EDGE OF PAVEMENT DROP-OFF AS FOLLOWS:
 - BACKFILL DROP-OFFS THAT EXCEED 2 INCHES ON ROADWAYS WITH POSTED SPEED LIMITS OF 45 MPH OR GREATER.
 - BACKFILL DROP-OFFS THAT EXCEED 3 INCHES ON ROADWAYS WITH POSTED SPEED LIMITS LESS THAN 45 MPH.
 - BACKFILL WITH SUITABLE COMPACTED MATERIAL, AS APPROVED BY THE ENGINEER, AT NO EXPENSE TO THE DEPARTMENT.
- F) DO NOT EXCEED A DIFFERENCE OF 2 INCHES IN ELEVATION BETWEEN OPEN LANES OF TRAFFIC FOR NOMINAL LIFTS OF 1.5 INCHES. INSTALL ADVANCE WARNING "UNEVEN LANES" SIGNS (W8-11) IN ADVANCE AND A MINIMUM OF EVERY HALF MILE THROUGHOUT THE UNEVEN AREA.

TRAFFIC PATTERN ALTERATIONS

- G) NOTIFY THE ENGINEER THIRTY (30) CALENDAR DAYS PRIOR TO ANY TRAFFIC PATTERN ALTERATION.

SIGNING

- H) PROVIDE SIGNING AND DEVICES REQUIRED TO CLOSE THE ROAD ACCORDING TO THE ROADWAY STANDARD DRAWINGS AND TRAFFIC CONTROL PLANS.
 - PROVIDE SIGNING REQUIRED FOR THE OFF-SITE DETOUR ROUTE AS SHOWN IN THE TRAFFIC CONTROL PLANS.
- I) COVER OR REMOVE ALL SIGNS AND DEVICES REQUIRED TO CLOSE THE ROAD WHEN ROAD CLOSURE IS NOT IN OPERATION.
 - COVER OR REMOVE ALL SIGNS REQUIRED FOR THE OFF-SITE DETOUR WHEN THE DETOUR IS NOT IN OPERATION.
- J) ENSURE ALL NECESSARY SIGNING IS IN PLACE PRIOR TO ALTERING ANY TRAFFIC PATTERN.
- K) CONTRACTOR SHALL MAINTAIN SIDEWALK ACCESS AT ALL TIMES AS STATED IN THE PHASING. CONTRACTOR SHALL BE RESPONSIBLE TO PROVIDE TEMPORARY SIDEWALKS (CONCRETE, ASPHALT, OR OTHER SUITABLE MATERIAL AS APPROVED BY THE ENGINEER) AT ALL LOCATIONS WHERE THE OPEN PEDESTRIAN TRAVELWAY HAS BEEN REMOVED FOR CONSTRUCTION OPERATIONS (UTILITIES, DRAINAGE, ETC.).

MANAGEMENT STRATEGIES

DURING CONSTRUCTION OF PROPOSED STRUCTURE BRIDGE #008 OVER SLASH CREEK, NC 12 WILL BE CLOSED TO ALL TRAFFIC. VEHICLE TRAFFIC WILL BE MAINTAINED USING AN OFF-SITE DETOUR VIA SR 1241 (EAGLE PASS ROAD), (SEE SHEET TMP-2). PEDESTRIAN TRAFFIC WILL BE MAINTAINED USING A PEDESTRIAN TRANSPORT SERVICE (REFER TO TC SPECIAL PROVISIONS).

ACCESS TO ALL RESIDENCES AND BUSINESSES WITHIN THE PROJECT LIMITS MUST BE MAINTAINED AT ALL TIMES.

ACCESS TO SR 1248 (ISLINGTON COURT) MUST BE MAINTAINED AT ALL TIMES. USE FLAGGERS TO WEDGE ASPHALT ONE LANE AT A TIME UP UNTIL PROPOSED ELEVATION IS REACHED.

LOCAL NOTES

1. NOTIFY THE DARE COUNTY SCHOOLS TRANSPORTATION DIRECTOR OF THE BRIDGE REMOVAL 30 DAYS PRIOR TO ROAD CLOSURE.
2. NOTIFY THE DARE COUNTY EMERGENCY MANAGEMENT SERVICES DIRECTOR OF BRIDGE REMOVAL 30 DAYS PRIOR TO ROAD CLOSURE.
3. PROVIDE PEDESTRIAN TRANSPORT SERVICE ONCE NC 12 IS CLOSED FOR BRIDGE CONSTRUCTION (REFER TO TC SPECIAL PROVISIONS).

PHASING

STEP 1:

UTILIZE PART 1 OF THE ROADWAY PLAN SET TO RESURFACE SR 1241 (EAGLE PASS ROAD). SEE PART 1, SHEET 2B-1, STEPS #1 THRU #4. DO NOT MOVE ON TO THE NEXT STEP UNTIL ALL WORK ASSOCIATED WITH THE RESURFACING IS COMPLETE AND TRAFFIC IS FULLY RESTORED.

STEP 2:

PROVIDE AND MAINTAIN CHANGEABLE MESSAGE SIGNS AT EACH END OF NC 12 FOR AS DIRECTED IN RSD 1101.03, SHEET 1 OF 9, NOTE 7 AND AS SHOWN ON TMP-2.

STEP 3:

USING RSD 1101.03, SHEET 1 OF 9 AND SHEET TMP-2, INSTALL ROAD CLOSURE AND DETOUR SIGNS, PLACE TYPE III BARRICADES TO CLOSE NC 12 TO THROUGH VEHICLE TRAFFIC, AND DETOUR TRAFFIC OFF-SITE. INSTALL PEDESTRIAN BARRICADES AND CLOSE SIDEWALKS AT THE PROJECT LIMITS. DETOUR PEDESTRIANS USING A PEDESTRIAN TRANSPORT SERVICE (REFER TO REQUIREMENTS OF TC SPECIAL PROVISIONS).

REMOVE CHANGEABLE MESSAGE SIGNS AS DIRECTED IN NOTE 7.

STEP 4:

REMOVE THE EXISTING STRUCTURE.

STEP 5:

CONSTRUCT THE FOLLOWING BEHIND ROAD CLOSURE UP TO BUT NOT INCLUDING THE FINAL LAYER OF ASPHALT:

- PROPOSED STRUCTURE
- -L- STA. 11+00 +/- TO -L- STA. 17+00 +/-

USE ROADWAY STANDARD DRAWING (RSD) 1101.02 SHEET 1 OF 19 AS NEEDED TO CONSTRUCT AND THE FOLLOWING UP TO BUT NOT INCLUDING THE FINAL LAYER OF ASPHALT WHILE MAINTAINING TRAFFIC TO SR 1248 (ISLINGTON COURT):

- -L- STA. 17+00 +/- TO -L- STA. 19+50 +/-
- -Y1- STA. 10+00 +/- TO 11+30 +/-

STEP 6:

PLACE FINAL LAYER OF ASPHALT AND FINAL PAVEMENT MARKINGS ALONG NC 12 ACCORDING TO THE PAVEMENT MARKING PLANS. OPEN NC 12 TO ALL TRAFFIC.

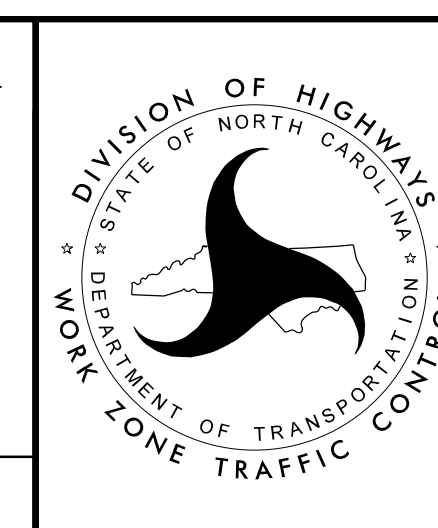
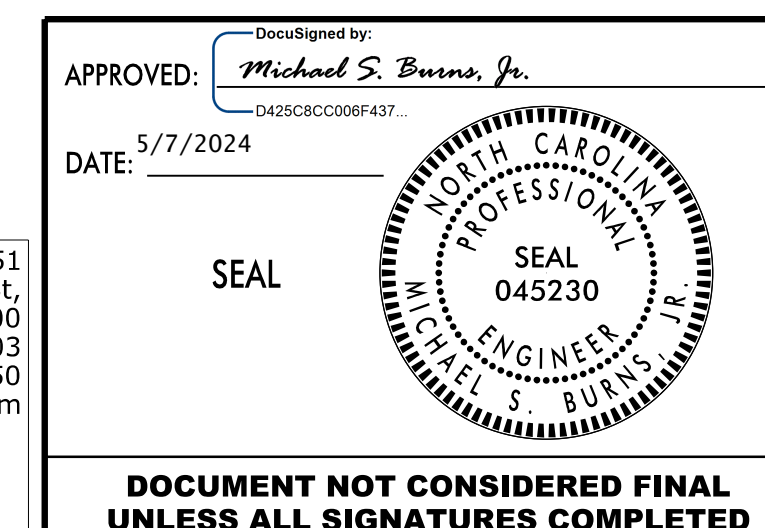
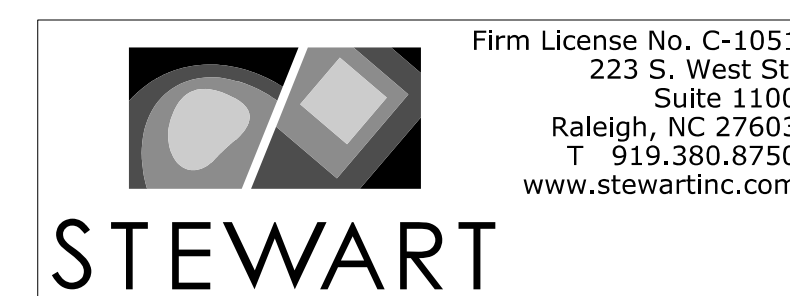
STEP 7:

UTILIZE PART 1 OF THE ROADWAY PLAN SET TO PLACE THE FINAL LAYER OF ASPHALT AND FINAL PAVEMENT MARKINGS ON SR 1241 (EAGLE PASS ROAD). SEE PART 1, SHEET 2B-1, STEPS #6 AND #7.

STEP 8:

COMPLETE ANY REMAINING WORK. REMOVE WORK ZONE TRAFFIC CONTROL DEVICES.

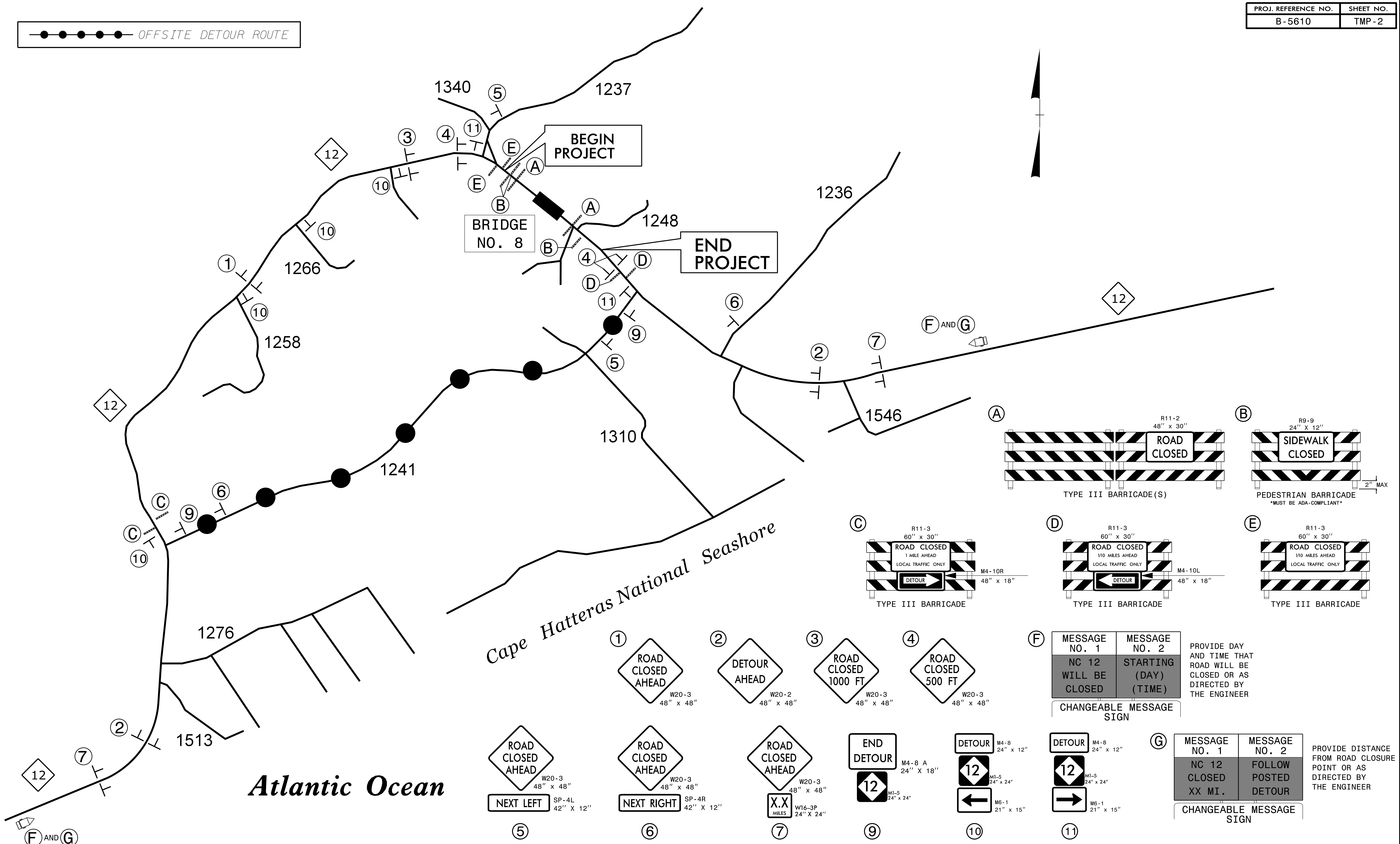
5/7/2024
\\TC\B5610.TC.TMP-01B.dgn
USER:mburns



**TRANSPORTATION
OPERATIONS
PLAN**

**DOCUMENT NOT CONSIDERED FINAL
UNLESS ALL SIGNATURES COMPLETED**

●●●●● OFFSITE DETOUR ROUTE



NOTE:
 PROVIDE A PEDESTRIAN TRANSPORT SERVICE ONCE NC 12 IS CLOSED FOR BRIDGE CONSTRUCTION (REFER TO TC SPECIAL PROVISIONS).
 PICKUP AND DROP OFF LOCATIONS SHOULD BE APPROVED BY THE ENGINEER.

REFER TO ROADWAY STANDARD DRAWING 1101.03, SHEET 1 OF 9 FOR GENERAL NOTES AND PLACEMENT OF SIGNS 1 THRU 7, BARRICADES A, B, C, AND D, AND PCMS E AND F.

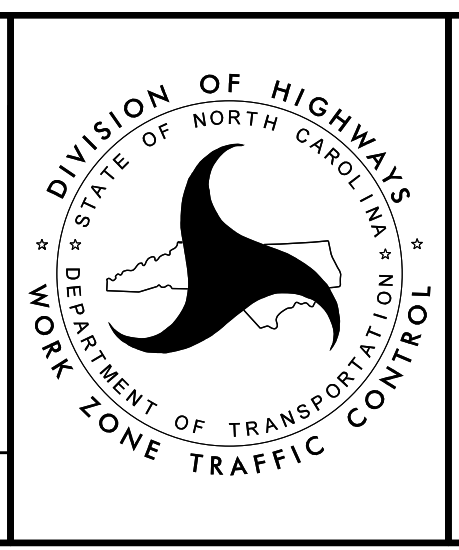
Firm License No. C-1051
 223 S. West St.
 Suite 1100
 Raleigh, NC 27603
 T 919.380.8750
 www.stewartinc.com

STEWART

APPROVED: *Michael S. Burns, Jr.*
 DATE: 4/5/2024

SEAL

DOCUMENT NOT CONSIDERED FINAL UNLESS ALL SIGNATURES COMPLETED



OFF-SITE DETOUR

DEPARTMENT OF TRANSPORTATION
 DIVISION OF HIGHWAYS
 STATE OF NORTH CAROLINA
 WORK ZONE TRAFFIC CONTROL

3/27/2024
 \\TCP\B5610_TC_TMP-02.dgn
 USER:ayoung