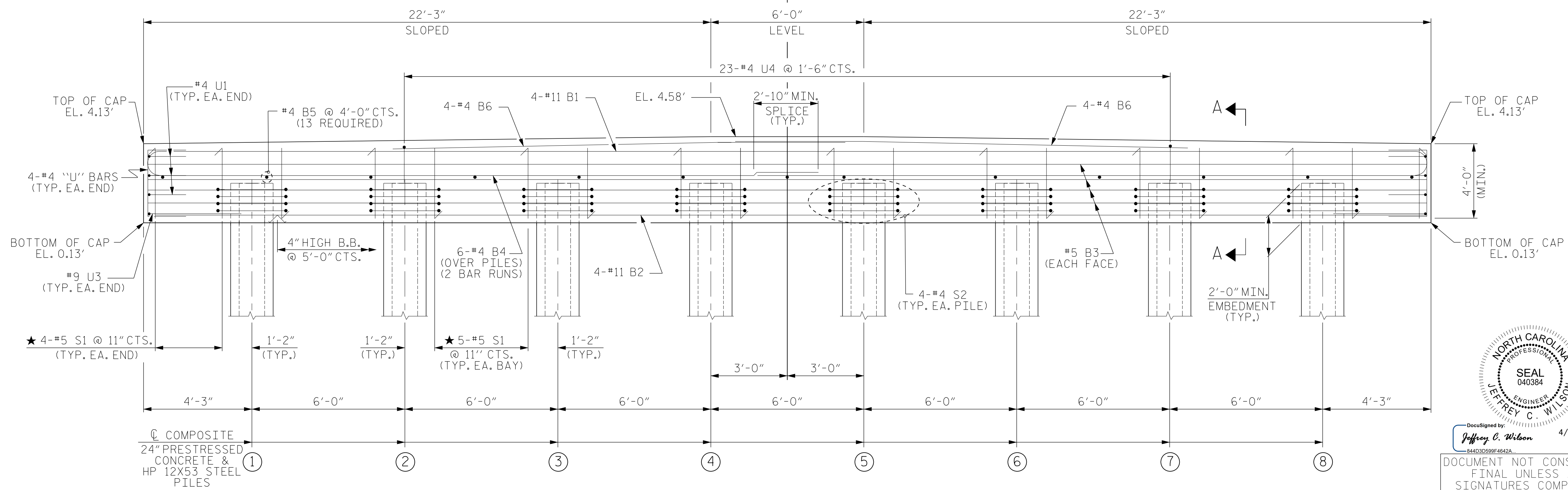
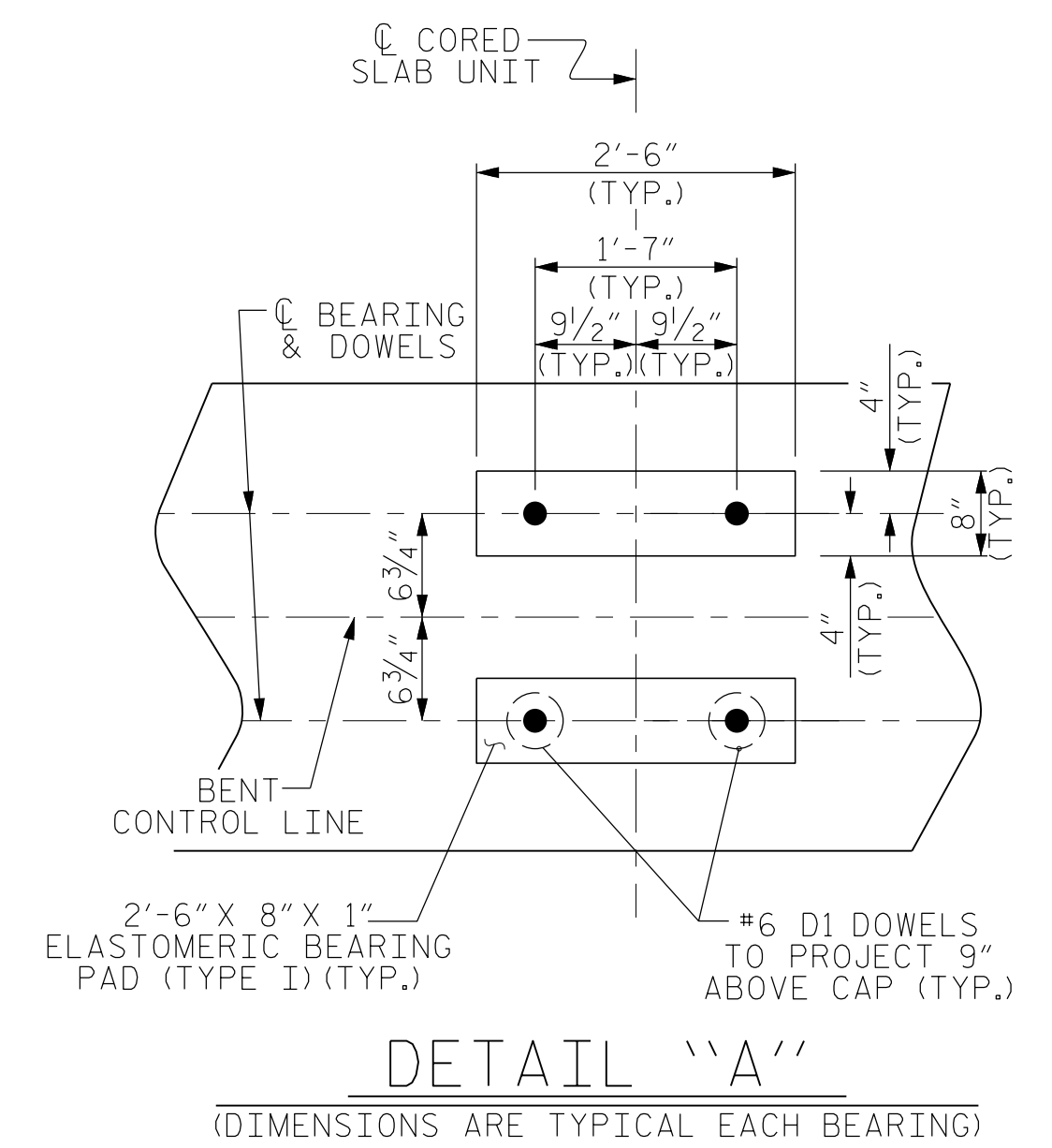
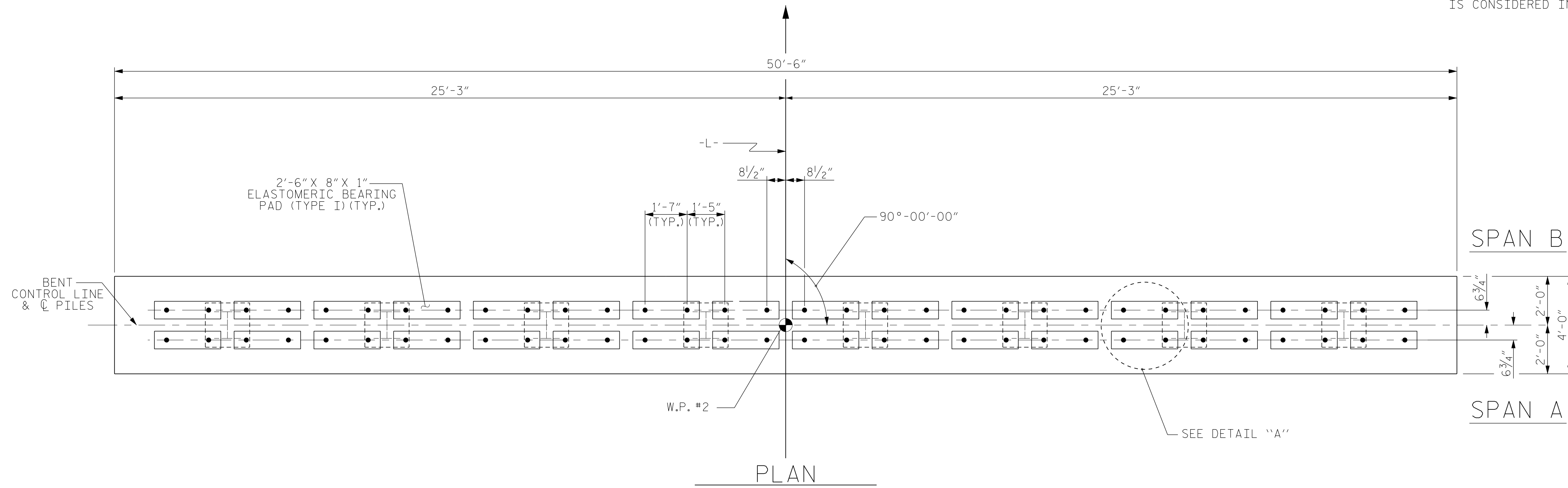


NOTES

STIRRUPS IN CAP MAY BE SHIFTED AS NECESSARY TO CLEAR DOWELS.

★ INVERT ALTERNATE STIRRUPS.

THE CONCRETE IN THE BENT CAPS OF BENT 1 SHALL CONTAIN SILICA FUME. SILICA FUME SHALL BE SUBSTITUTED FOR 5% OF THE PORTLAND CEMENT BY WEIGHT. IF THE OPTION OF ARTICLE 1024-1 OF THE STANDARD SPECIFICATIONS TO PARTIALLY SUBSTITUTE CLASS F FLY ASH FOR PORTLAND CEMENT IS EXERCISED, THEN THE RATE OF FLY ASH SUBSTITUTION SHALL BE REDUCED TO 1.0 LB OF FLY ASH PER 1.0 LB. NO PAYMENT WILL BE MADE FOR THIS SUBSTITUTION AS IT IS CONSIDERED INCIDENTAL TO THE VARIOUS PAY ITEMS.



ELEVATION
FOR SECTION A-A, SEE SHEET 2 OF 2

PROJECT NO. B-5610

DARE COUNTY

STATION: 15+42.50 -L-

SHEET 1 OF 2



DocuSigned by:
Jeffrey C. Wilson
4/8/2024
84430599F4642A
DOCUMENT NOT CONSIDERED
FINAL UNLESS ALL
SIGNATURES COMPLETED

STATE OF NORTH CAROLINA
DEPARTMENT OF TRANSPORTATION
RALEIGH
SUBSTRUCTURE
BENT 1

Firm License No. C-1051
223 S West St,
Suite 1100
Raleigh, NC 27603
T 919.380.8750
www.stewartinc.com



REVISIONS						SHEET NO.
NO.	BY:	DATE:	NO.	BY:	DATE:	S-23
1			3			TOTAL SHEETS
2			4			29

DRAWN BY: G. RAMBOULI DATE: 1/24
CHECKED BY: J. WILSON DATE: 1/24
DESIGN ENGINEER OF RECORD: J. WILSON DATE: 1/24

4/4/2024
B-5610-SMUJ-B1.270008.dgn
USER: jwilson

B-5610