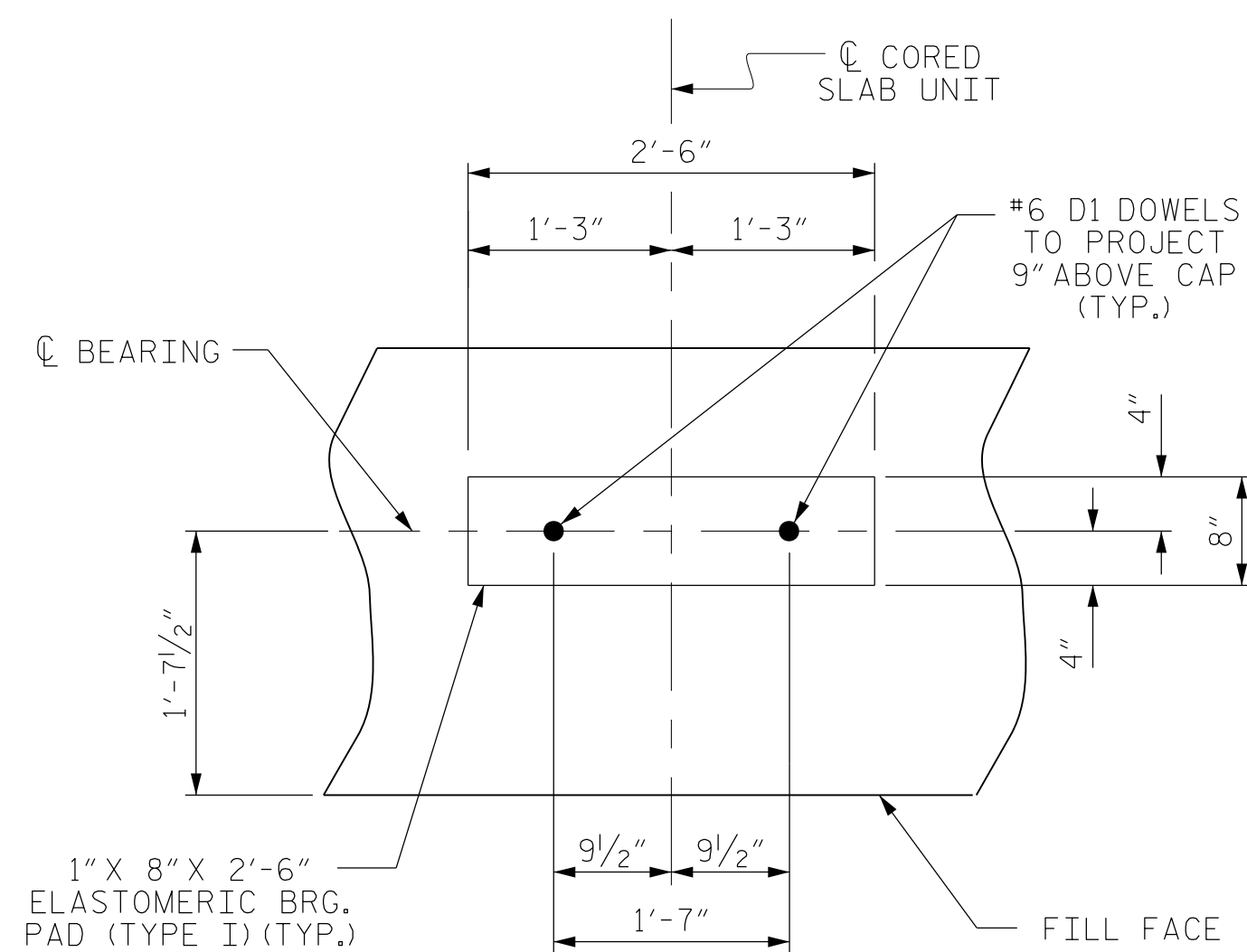


BAGGED STONE AND PIPE SHALL BE PLACED IMMEDIATELY AFTER COMPLETION OF END BENT EXCAVATION. PIPE MAY BE EITHER CONCRETE, CORRUGATED STEEL, CORRUGATED ALUMINUM ALLOY, OR CORRUGATED PLASTIC. PERFORATED PIPE WILL NOT BE ALLOWED.

BAGGED STONE SHALL REMAIN IN PLACE UNTIL THE ENGINEER DIRECTS THAT IT BE REMOVED. THE CONTRACTOR SHALL REMOVE AND DISPOSE OF SILT ACCUMULATIONS AT BAGGED STONE WHEN SO DIRECTED BY THE ENGINEER. BAGS SHALL BE REMOVED AND REPLACED WHENEVER THE ENGINEER DETERMINES THAT THEY HAVE DETERIORATED AND LOST THEIR EFFECTIVENESS.

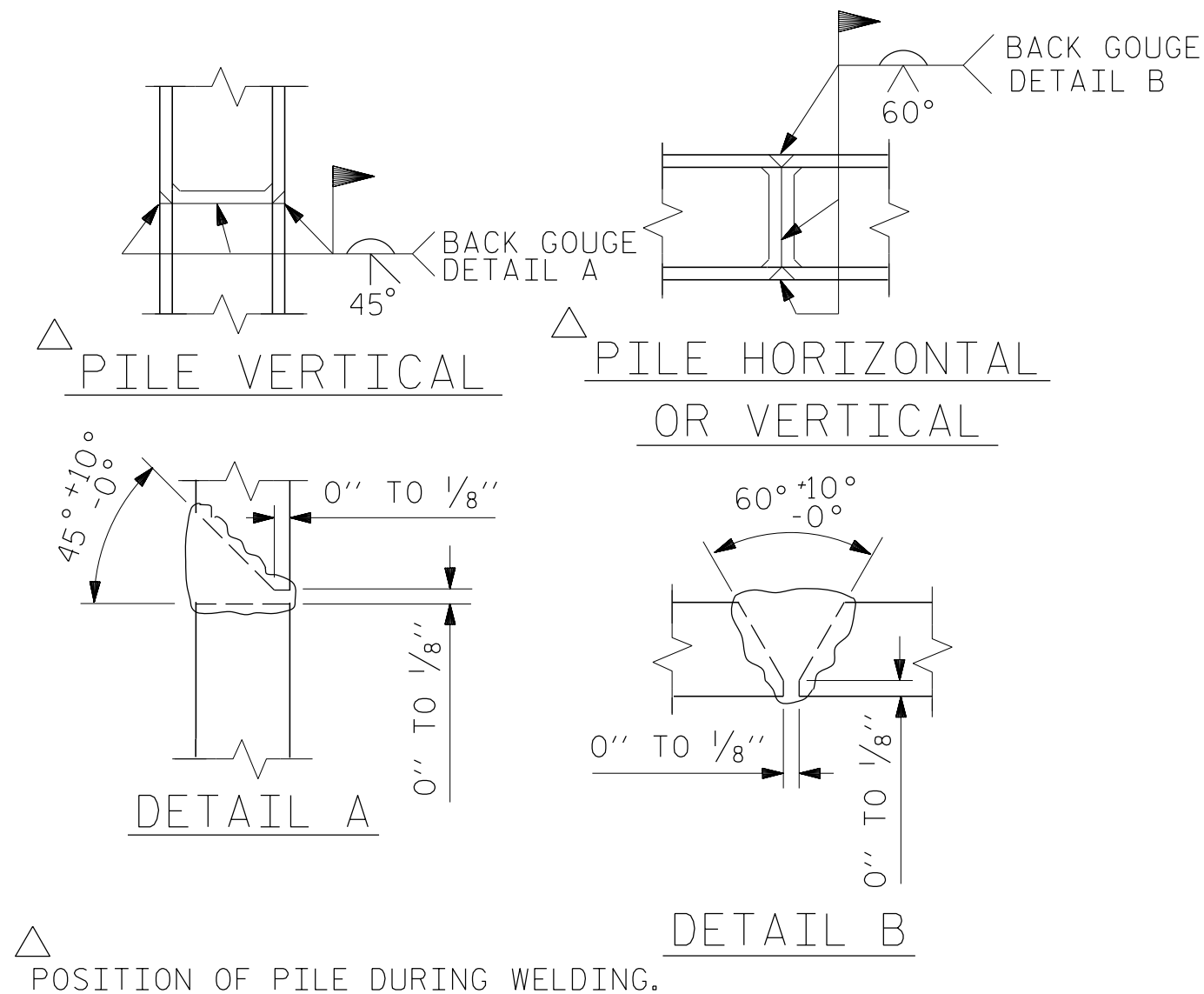
NO SEPARATE PAYMENT WILL BE MADE FOR THIS WORK AND THE ENTIRE COST OF THIS WORK SHALL BE INCLUDED IN THE UNIT CONTRACT PRICE BID FOR THE SEVERAL PAY ITEMS.

TEMPORARY DRAINAGE AT END BENT

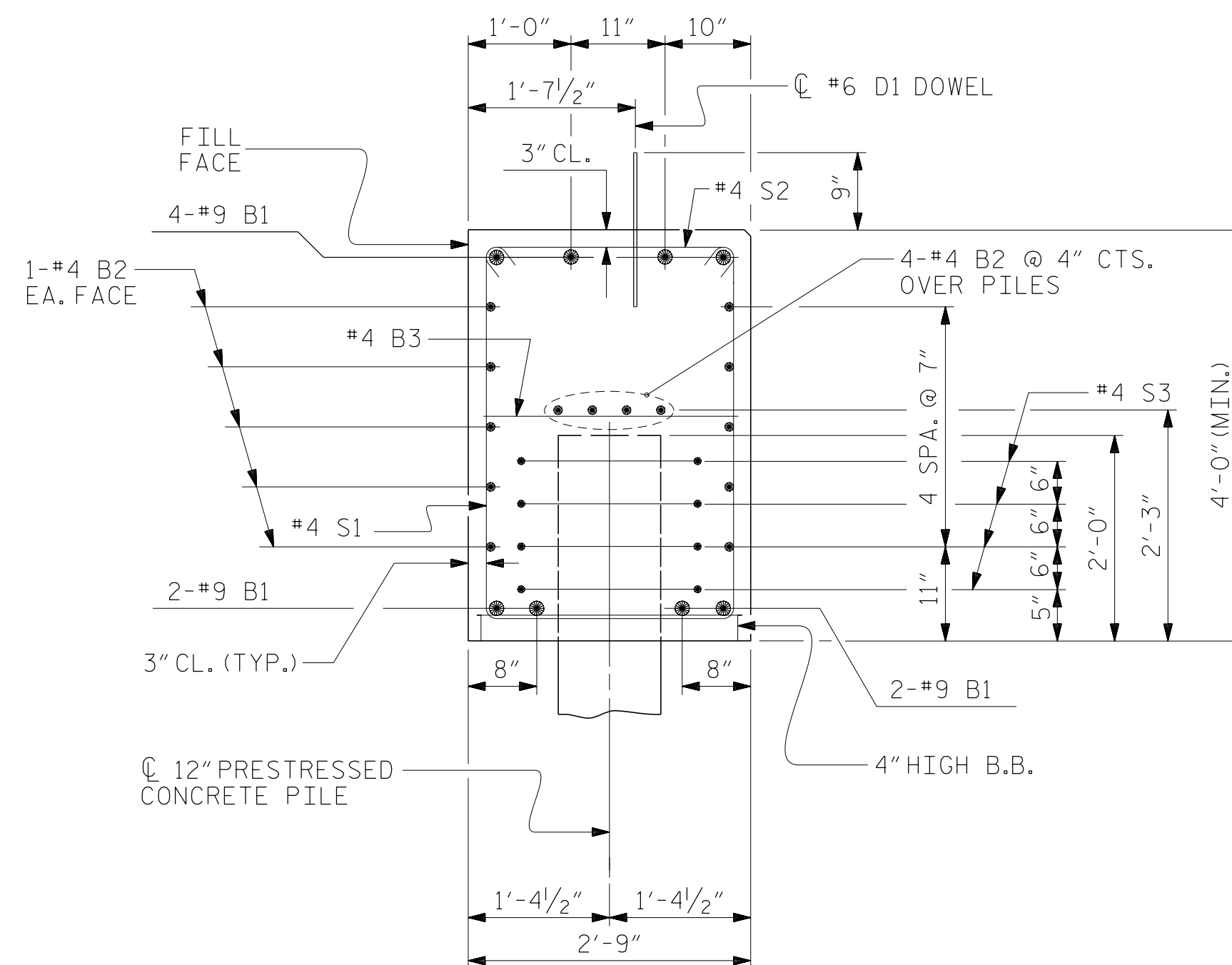


DETAIL "A"

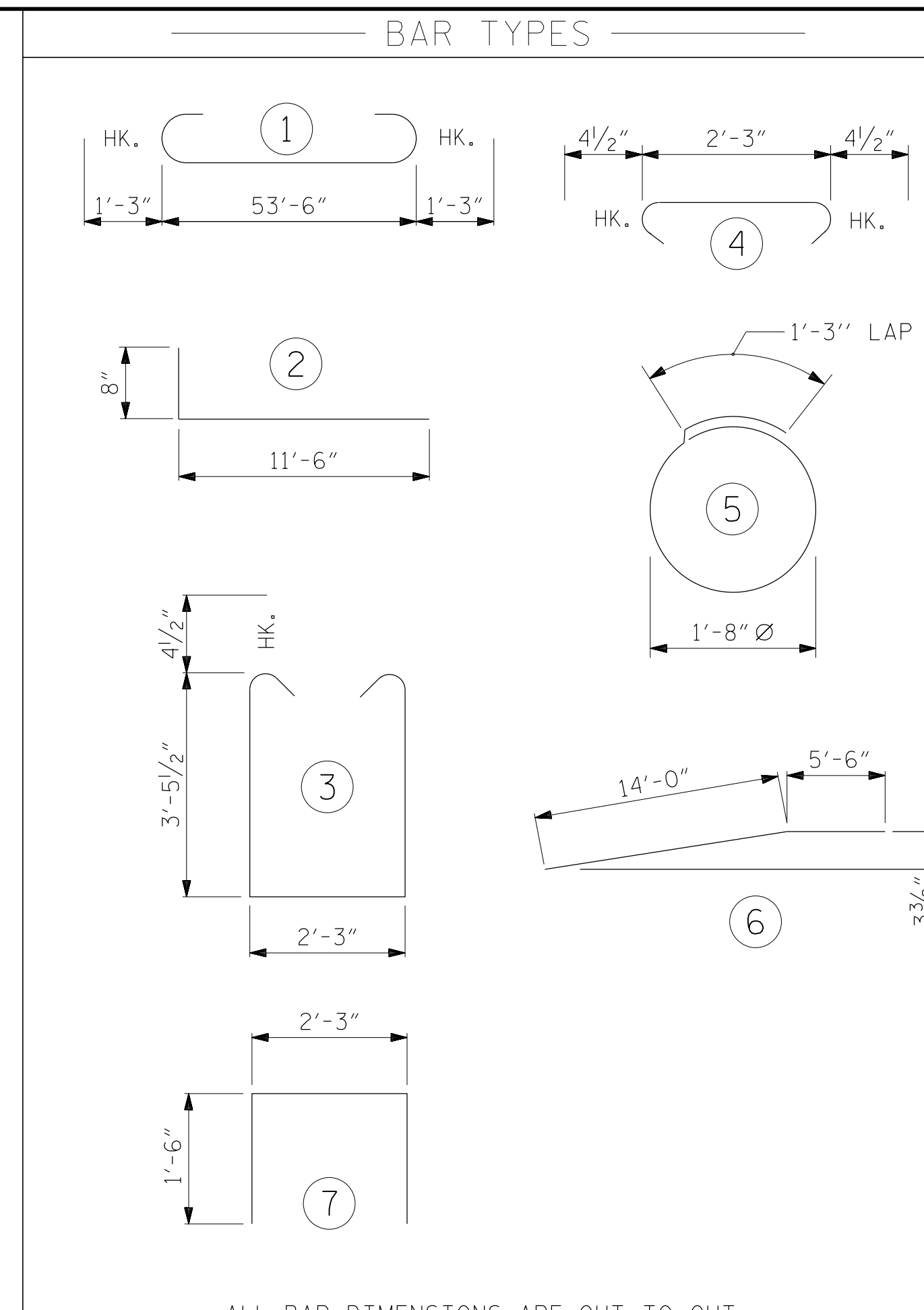
(END BENT No. 1 SHOWN, END BENT No. 2 SIMILAR BY ROTATION)



PILE SPLICE DETAILS



SECTION A-A



ALL BAR DIMENSIONS ARE OUT TO OUT.

END BENT No. 1	END BENT No. 2
12" PRESTRESSED CONCRETE PILES NO: 7 LIN. FT. = 210	12" PRESTRESSED CONCRETE PILES NO: 7 LIN. FT. = 210
PILE DRIVING EQUIPMENT SETUP FOR 12" PRESTRESSED CONCRETE PILES NO: 7	PILE DRIVING EQUIPMENT SETUP FOR 12" PRESTRESSED CONCRETE PILES NO: 7

BILL OF MATERIAL

FOR ONE END BENT

BAR NO.	NO.	SIZE	TYPE	LENGTH	WEIGHT
*B1	8	#9	1	56'-0"	1,523
*B2	28	#4	STR	28'-3"	528
*B3	14	#4	STR	2'-3"	21
*B4	8	#5	6	19'-6"	163
*D1	32	#6	STR	1'-6"	72
*H1	40	#4	2	12'-2"	325
*K1	16	#4	STR	3'-7"	38
*S1	60	#4	3	9'-11"	397
*S2	60	#4	4	3'-0"	120
*S3	28	#4	5	6'-6"	122
*U1	23	#4	7	5'-3"	81
*V1	68	#4	STR	6'-0"	273

*EPOXY COATED REINFORCING STEEL (FOR ONE END BENT) 3,663 LBS.

CLASS AA CONCRETE BREAKDOWN (FOR ONE END BENT)

POUR #1	CAP & LOWER PART OF WINGS	24.3 C.Y.
POUR #2	UPPER PART OF WINGS	2.9 C.Y.

TOTAL CLASS AA CONCRETE 27.2 C.Y.

NOTES

THE CONCRETE IN THE END BENT CAPS OF END BENTS 1 AND 2 SHALL CONTAIN SILICA FUME. SILICA FUME SHALL BE SUBSTITUTED FOR 5% OF THE PORTLAND CEMENT BY WEIGHT. IF THE OPTION OF ARTICLE 1024-1 OF THE STANDARD SPECIFICATIONS TO PARTIALLY SUBSTITUTE CLASS F FLY ASH FOR PORTLAND CEMENT IS EXERCISED, THEN THE RATE OF FLY ASH SUBSTITUTION SHALL BE REDUCED TO 1.0 LB OF FLY ASH PER 1.0 LB. NO PAYMENT WILL BE MADE FOR THIS SUBSTITUTION AS IT IS CONSIDERED INCIDENTAL TO THE VARIOUS PAY ITEMS.

PROJECT NO. B-5610

DARE COUNTY

STATION: 15+42.50 -L-

SHEET 4 OF 4



DocuSigned by: Jeffrey C. Wilson 4/8/2024

DOCUMENT NOT CONSIDERED FINAL UNLESS ALL SIGNATURES COMPLETED

Firm License No. C-1051
223 S West St,
Suite 1100
Raleigh, NC 27603
T 919.380.8750
www.stewartinc.com

STEWART

STATE OF NORTH CAROLINA
DEPARTMENT OF TRANSPORTATION
RALEIGH
SUBSTRUCTURE
END BENT 1 & 2
DETAILS

REVISIONS

NO.	BY:	DATE:	NO.	BY:	DATE:
1			3		
2			4		

SHEET NO.

S-22

TOTAL SHEETS 29

DRAWN BY: G. RAMBOULI DATE: 1/24
CHECKED BY: J. WILSON DATE: 1/24
DESIGN ENGINEER OF RECORD: J. WILSON DATE: 1/24

4/4/2024

B-5610-SMU-E4-270008.dgn
USER: jwilson

B-5610