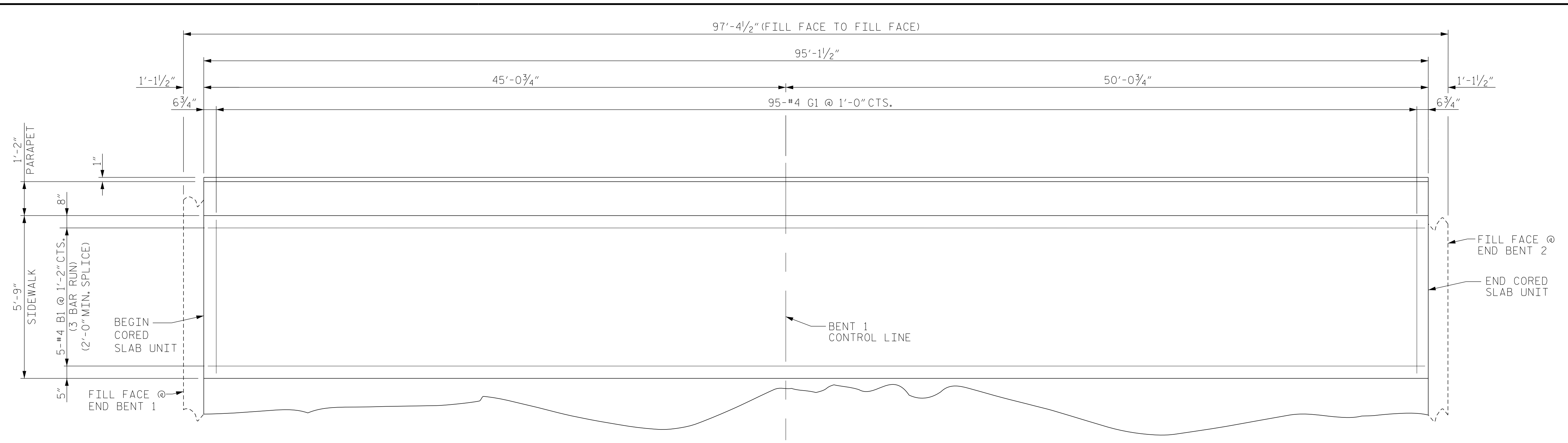


BILL OF MATERIAL					
SIDEWALK					
BAR	NUMBER	SIZE	TYPE	LENGTH	WEIGHT
* B1	30	#5	STR	32'-11"	1,030
* G1	190	#4	STR	5'-3"	666
* EPOXY COATED REINFORCING STEEL					1,696 LBS.
CLASS AA CONCRETE					39.9 CU. YDS.



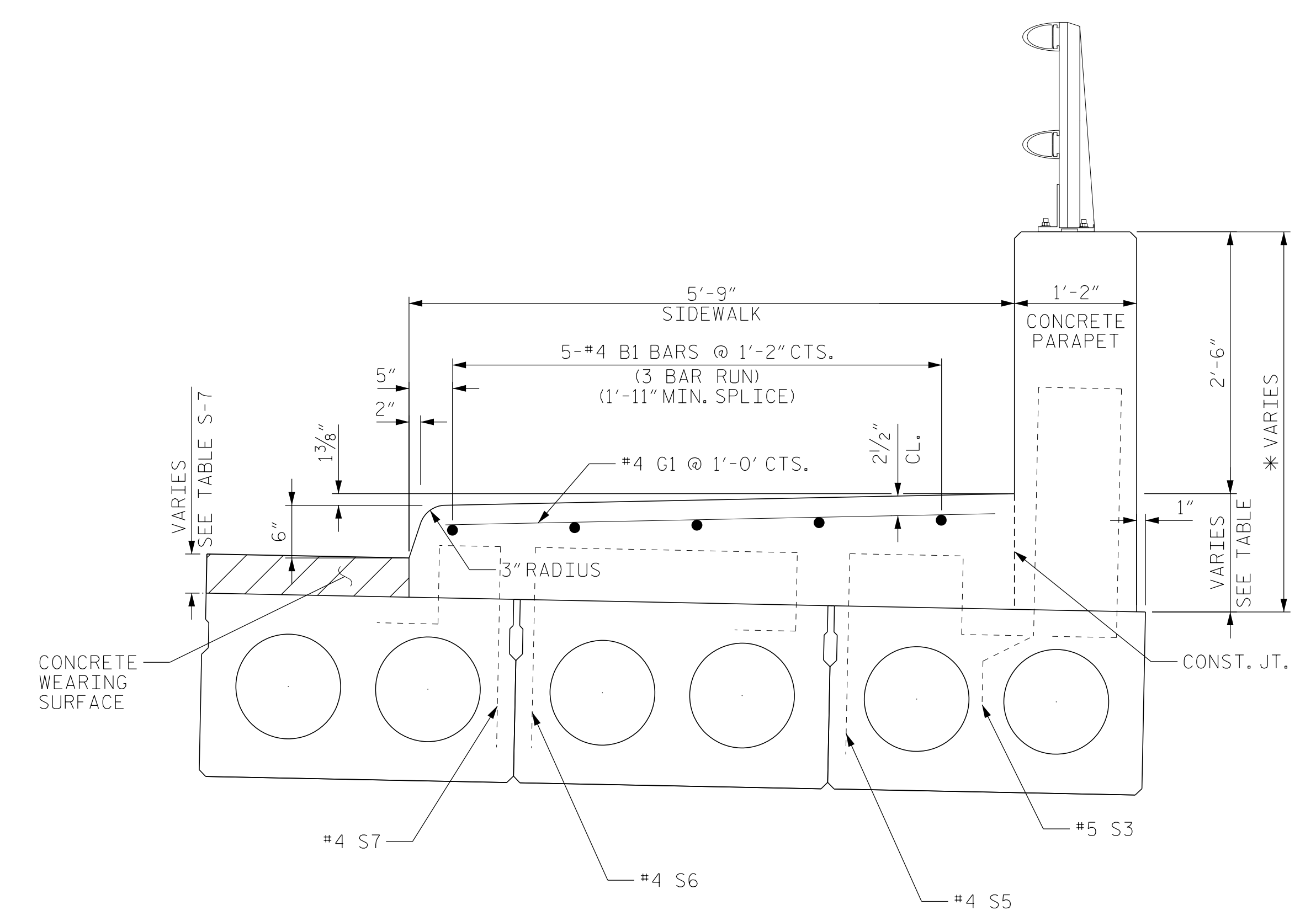
PLAN OF SIDEWALK
(LEFT SIDE SHOWN, RIGHT SIDE SIMILAR)

NOTES

ALL REINFORCING STEEL IN THE SIDEWALK SHALL BE EPOXY COATED.

GROOVED CONTRACTION JOINTS, 1/2" IN DEPTH, SHALL BE TOOLED IN ALL EXPOSED FACES OF THE SIDEWALK IN ACCORDANCE WITH ARTICLE 825-10(B) OF THE STANDARD SPECIFICATIONS. THE CONTRACTION JOINTS SHALL BE LOCATED AT A SPACING OF 8 FT. TO 10 FT. BETWEEN END OF CORED SLAB UNITS. NO CONTRACTION JOINTS WILL BE REQUIRED FOR SEGMENTS LESS THAN 10 FEET IN LENGTH.

PAYMENT FOR SIDEWALK SHALL BE INCLUDED IN PAY ITEMS FOR CLASS AA CONCRETE AND EPOXY COATED REINFORCING STEEL.

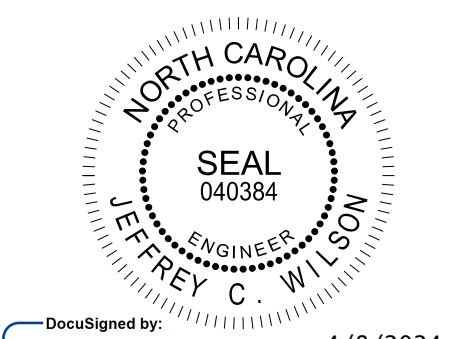


SECTION THRU SIDEWALK
* SEE PARAPET HEIGHT TABLE ON SHEET S-16

SIDEWALK HEIGHT		
SPAN	AT \bar{C} BEARINGS	AT MIDSPAN
A	1'-1 9/16"	1'-1 1/16"
B	1'-1 9/16"	1'-0 7/16"

SIDEWALK HEIGHT IS BASED ON PREDICTED FINAL CAMBER & THEORETICAL GRADE LINE ELEVATIONS AND VARIES BETWEEN CENTERLINE OF BEARING AND MIDSPAN FOR ALL SPANS.

PROJECT NO. B-5610
DARE COUNTY
 STATION: 15+42.50 -L-



DecuSigned by: *Jeffrey C. Wilson* 4/8/2024
 84430599F4642A
 DOCUMENT NOT CONSIDERED FINAL UNLESS ALL SIGNATURES COMPLETED

Firm License No. C-1051
 223 S West St,
 Suite 1100
 Raleigh, NC 27603
 T 919.380.8750
 www.stewartinc.com

STATE OF NORTH CAROLINA
 DEPARTMENT OF TRANSPORTATION
 RALEIGH
 SUPERSTRUCTURE
 SIDEWALK DETAILS

REVISIONS						SHEET NO.
NO.	BY:	DATE:	NO.	BY:	DATE:	S-18
1			3			TOTAL SHEETS 29
2			4			

DRAWN BY: G. RAMBOULI DATE: 1/24
 CHECKED BY: J. WILSON DATE: 1/24
 DESIGN ENGINEER OF RECORD: J. WILSON DATE: 1/24

B-5610
 4/4/2024
 B-5610-SMUJ_SW_270008.dgn
 USER: jwilson