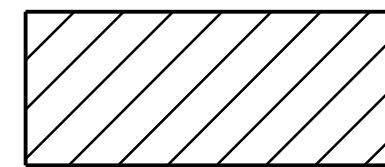
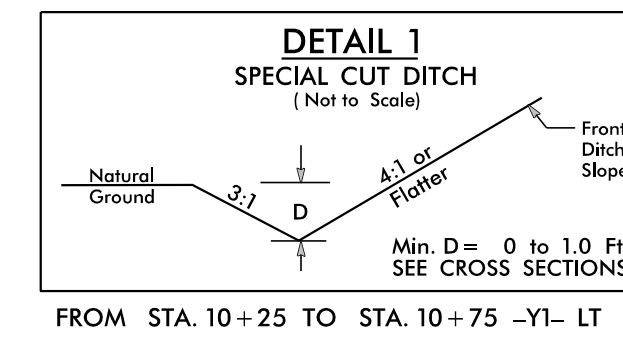


NOTE: UTILIZE TEMPORARY SEDIMENT BASIN OR SPECIAL STILLING BASIN(S) AS STILLING BASIN WHERE APPLICABLE.

NOTE: REMOVE FABRIC INSERT INLET PROTECTION IN LIEU OF ROCK INLET SEDIMENT TRAPS, TYPE-C AS DIRECTED TO AVOID IMPOUNDMENT OF RUNOFF IN ROADWAY OPEN TO TRAFFIC.



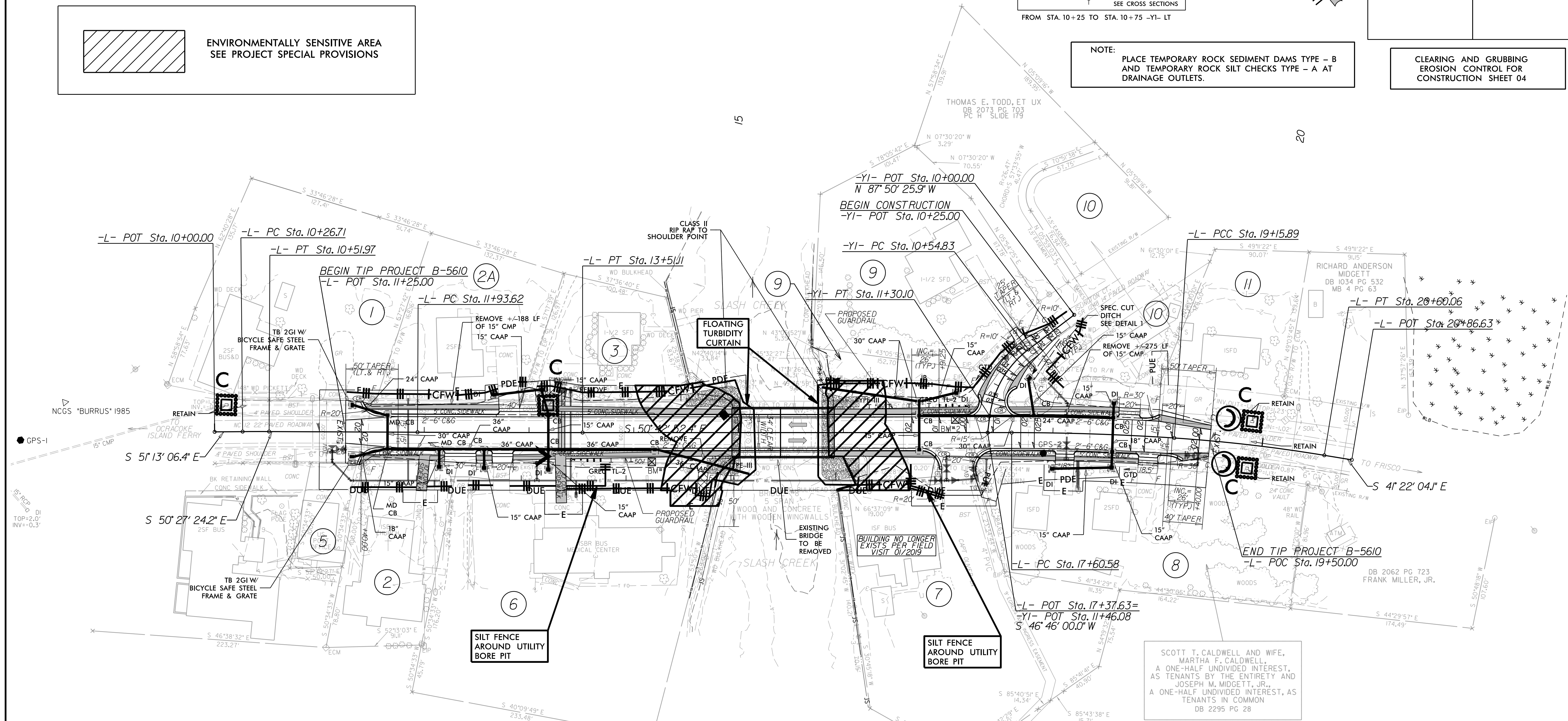
ENVIRONMENTALLY SENSITIVE AREA
SEE PROJECT SPECIAL PROVISIONS



NOTE: PLACE TEMPORARY ROCK SEDIMENT DAMS TYPE - B AND TEMPORARY ROCK SILT CHECKS TYPE - A AT DRAINAGE OUTLETS.

PROJECT REFERENCE NO. B-5610	SHEET NO. EC-04/CONST.04
RW SHEET NO.	
ROADWAY DESIGN ENGINEER	HYDRAULICS ENGINEER

CLEARING AND GRUBBING
EROSION CONTROL FOR
CONSTRUCTION SHEET 04



LOW WOODEN BEAM=4.06'
TOP OF WATER TO LOW BEAM BRIDGE CLEARANCE=4.24'
THE HISTORIC HIGH WATER MARK COULD NOT BE DETERMINED BY PHYSICAL OR PAROLE EVIDENCE.

- ①
DROVER LLC
DB 1992 PG 95
PC B SLIDE 348
- 2A
HATTERAS UNITED
METHODIST CHURCH
DB 139 PG 506
- ②
HATTERAS UNITED
METHODIST CHURCH
DB 1617 PG 299
DB B PG 278
DB A PG 480
DB B PG 420
- ③
DARREL ALLEN
DANIELS, ET UX
DB 1670 PG 104
MB 2 PG 225
- ⑨
JEFFREY LYNN ODEN
DB 1904 PG III
PB 338 PG 569
- ⑤
HATTERAS VILLAGE
CIVIC ASSOCIATION INC.
DB 974 PG 546
DB 1954 PG 41
DB 1994 PG 306
DB 125 PG 376
- ⑥
HATTERAS VILLAGE
MEDICAL ASSOCIATES
DB 130 PG 591
- ⑦
PALMATIER, LLC
DB 2600 PG 903
- ⑧
SEE PROPERTY
OWNER INFO (THIS
SHEET)
- ⑨
JEFFREY LYNN
ODEN, ET UX
DB 1558 PG 70
PC H SLIDE 179
- ⑩
CHRISTY D. KELLUM
DB 1957 PG 308
PC H SLIDE 179
- ⑪
RICHARD ANDERSON
MIDGETT
DB 2545 PG 879