

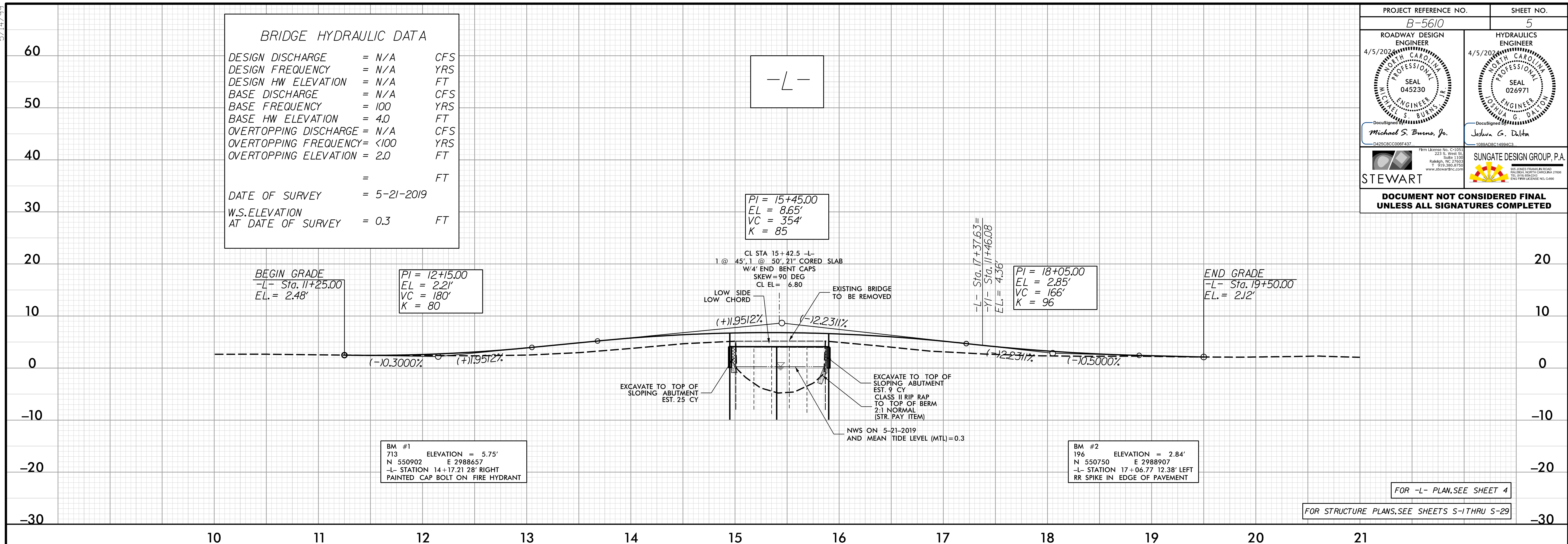
5/14/19

PROJECT REFERENCE NO. <b>B-5610</b>	SHEET NO. <b>5</b>
ROADWAY DESIGN ENGINEER 4/5/2019 MICHAEL S. BURNS, JR. SEAL 045230 NORTH CAROLINA PROFESSIONAL ENGINEERS	HYDRAULICS ENGINEER 4/5/2019 JESUNA G. DALTON SEAL 026971 NORTH CAROLINA PROFESSIONAL ENGINEERS
Michael S. Burns, Jr. D4252CBCC00F437	Jesuna G. Dalton 1088AD8C14884C3
STEWART	SUNGATE DESIGN GROUP, P.A.
DOCUMENT NOT CONSIDERED FINAL UNLESS ALL SIGNATURES COMPLETED	

**BRIDGE HYDRAULIC DATA**

DESIGN DISCHARGE = N/A CFS  
 DESIGN FREQUENCY = N/A YRS  
 DESIGN HW ELEVATION = N/A FT  
 BASE DISCHARGE = N/A CFS  
 BASE FREQUENCY = 100 YRS  
 BASE HW ELEVATION = 4.0 FT  
 OVERTOPPING DISCHARGE = N/A CFS  
 OVERTOPPING FREQUENCY = <100 YRS  
 OVERTOPPING ELEVATION = 2.0 FT

DATE OF SURVEY = 5-21-2019  
 W.S. ELEVATION AT DATE OF SURVEY = 0.3 FT



FOR -L- PLAN, SEE SHEET 4  
 FOR STRUCTURE PLANS, SEE SHEETS S-1 THRU S-29



FOR -YI- PLAN, SEE SHEET 4

3/27/2024  
 3:21:00  
 B5610\_Rdu-pl1\_05.dgn  
 IIS:R:\B5610