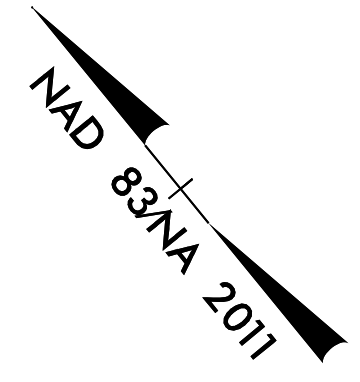
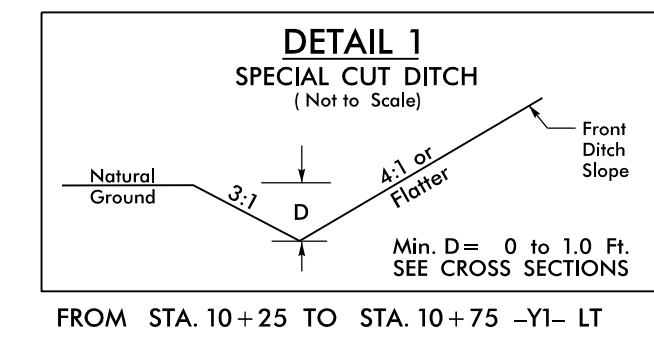


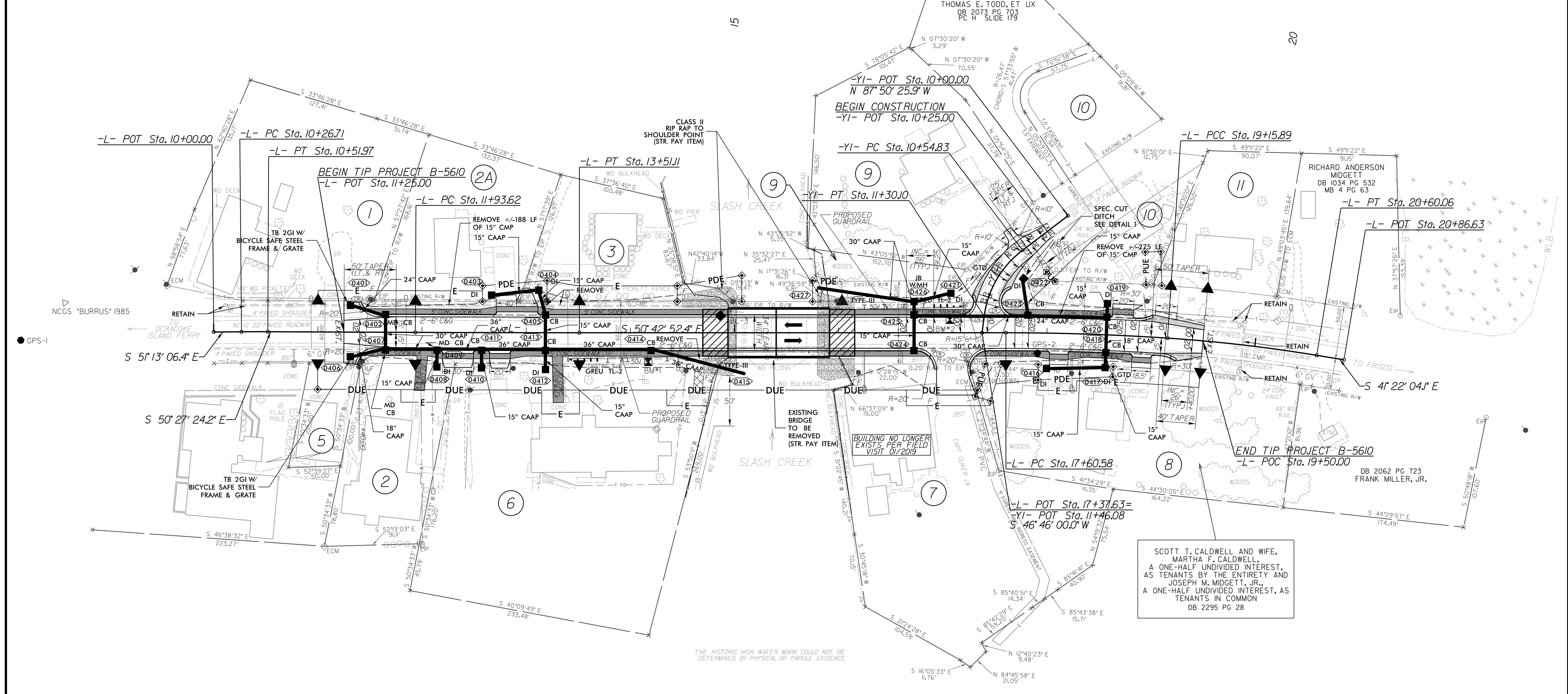
8/17/99

-L-				-YI-			
PI Sta 10+39.34	PI Sta 12+72.36	PI Sta 18+38.26	PI Sta 19+88.03	PI Sta 10+94.57			
$\Delta = 0^\circ 45' 42.2''$ (RT)	$\Delta = 0^\circ 15' 28.2''$ (LT)	$\Delta = 3^\circ 48' 10.4''$ (RT)	$\Delta = 5^\circ 32' 37.9''$ (RT)	$\Delta = 45^\circ 23' 34.1''$ (LT)			
$D = 3^\circ 00' 56.0''$	$D = 0^\circ 09' 49.3''$	$D = 2^\circ 26' 54.7''$	$D = 3^\circ 50' 43.3''$	$D = 60^\circ 18' 40.8''$			
$L = 25.26'$	$L = 157.50'$	$L = 155.31'$	$L = 144.17'$	$L = 75.26'$			
$T = 12.63'$	$T = 78.75'$	$T = 77.68'$	$T = 72.14'$	$T = 39.73'$			
$R = 1,900.00'$	$R = 35,000.00'$	$R = 2,340.00'$	$R = 1,490.00'$	$R = 95.00'$			
$S_e = \text{Exist.}$	$S_e = \text{NC}$	$S_e = 2.5\%$	$S_e = 3\%$	$S_e = 3.5\%$			
		Runoff = 65'	Runoff = 78'	Runoff = 43.75'			
				$V_0 = 15 \text{ MPH}$			



CONTRACTOR WILL NEED TO FIELD ADJUST PROPOSED SIDEWALK TIES AT THE BEGINNING AND END OF PROJECT AS DIRECTED BY THE ENGINEER TO TIE TO SIDEWALK THAT WAS INSTALLED DURING THE DESIGN OF THIS PROJECT. EXISTING SURVEY DOES NOT ACCURATELY SHOW LIMITS OF EXISTING SIDEWALK.

PROJECT REFERENCE NO. B-5610	SHEET NO. 4
ROADWAY DESIGN ENGINEER 4/5/2024 MICHAEL S. BURNS, JR. PROFESSIONAL SEAL 045230	HYDRAULICS ENGINEER 4/5/2024 JASUN G. DILTON PROFESSIONAL SEAL 026971
Decalsigned by Michael S. Burns, Jr. 10804001459453	Decalsigned by Jasun G. Dilton 10804001459453
STEWART	SUNGATE DESIGN GROUP, P.A.
DOCUMENT NOT CONSIDERED FINAL UNLESS ALL SIGNATURES COMPLETED	



SCOTT T. CALDWELL AND WIFE, MARTHA F. CALDWELL, A ONE-HALF UNDIVIDED INTEREST, AS TENANTS BY THE ENTIRETY AND JOSEPH M. MIDGETT, JR., A ONE-HALF UNDIVIDED INTEREST, AS TENANTS IN COMMON
DB 2295 PG 28

THE HISTORIC HIGH WATER MARK COULD NOT BE DETERMINED BY PHYSICAL OR PAROLE EVIDENCE.

1 DROVER LLC DB 1992 PG 95 PC B SLIDE 348	2A HATTERAS UNITED METHODIST CHURCH DB 139 PG 506	2 HATTERAS UNITED METHODIST CHURCH DB 1617 PG 299 DB B PG 278 DB A PG 480 DB B PG 420	3 DARREL ALLEN DANIELS, ET UX DB 1670 PG 104 MB 2 PG 225	9 JEFFREY LYNN ODEN DB 1904 PG III PB 338 PG 569	5 HATTERAS VILLAGE CIVIC ASSOCIATION INC. DB 974 PG 546 DB 1954 PG 41 DB 1994 PG 306 DB 125 PG 376
6 HATTERAS VILLAGE MEDICAL ASSOCIATES DB 130 PG 591	7 PALMATIER, LLC DB 2600 PG 903	8 SEE PROPERTY OWNER INFO (THIS SHEET)	9 JEFFREY LYNN ODEN, ET UX DB 1558 PG 70 PB 338 PG 569	10 CHRISTY D. KELLUM DB 1957 PG 308 PC H SLIDE 179	11 RICHARD ANDERSON MIDGETT DB 2545 PG 879

	ASPHALT SHOULDER
	CONCRETE SIDEWALK
	PAVEMENT REMOVAL

FOR -L- PROFILE, SEE SHEET 5

FOR -YI- PROFILE, SEE SHEET 5

FOR ROW AND EASEMENT CALLOUTS, SEE SHEET RW-04 THRU RW-04A

FOR STRUCTURE PLANS, SEE SHEETS S-1 THRU S-29

3/27/2024 B5610_Rdw_psh_04.dgn