

REFERENCE: I-2513AA

PROJECT: 34165

CONTENTS

SHEET NO.	DESCRIPTION
1	TITLE SHEET
2	LEGENDS
3	SITE PLAN
4	PROFILE
5-7	BORE LOGS

STATE OF NORTH CAROLINA
 DEPARTMENT OF TRANSPORTATION
 DIVISION OF HIGHWAYS
 GEOTECHNICAL ENGINEERING UNIT

STRUCTURE
SUBSURFACE INVESTIGATION

COUNTY BUNCOMBE
 PROJECT DESCRIPTION I-40 FROM EAST OF SR 1224
(MONTE VISTA RD) TO PAVEMENT JOINT WEST
OF SR 3412 (SAND HILL RD). INCLUDES INITIAL
IMPROVEMENTS AT I-40EB TO I-26EB AT US 19/23
(SMOKEY PARK HIGHWAY)
 SITE DESCRIPTION RETAINING WALL NO. W1001, FROM
-RPC- STATION 18+13.15, 27.50' RT TO -RPC-
STATION 21+36.15, 27.50' RT

STATE	STATE PROJECT REFERENCE NO.	SHEET NO.	TOTAL SHEETS
N.C.	I-2513AA	1	7

CAUTION NOTICE

THE SUBSURFACE INFORMATION AND THE SUBSURFACE INVESTIGATION ON WHICH IT IS BASED WERE MADE FOR THE PURPOSE OF STUDY, PLANNING AND DESIGN, AND NOT FOR CONSTRUCTION OR PAY PURPOSES. THE VARIOUS FIELD BORING LOGS, ROCK CORES AND SOIL TEST DATA AVAILABLE MAY BE REVIEWED OR INSPECTED IN RALEIGH BY CONTACTING THE N. C. DEPARTMENT OF TRANSPORTATION, GEOTECHNICAL ENGINEERING UNIT AT (919) 707-6850. THE SUBSURFACE PLANS AND REPORTS, FIELD BORING LOGS, ROCK CORES AND SOIL TEST DATA ARE NOT PART OF THE CONTRACT.

GENERAL SOIL AND ROCK STRATA DESCRIPTIONS AND INDICATED BOUNDARIES ARE BASED ON A GEOTECHNICAL INTERPRETATION OF ALL AVAILABLE SUBSURFACE DATA AND MAY NOT NECESSARILY REFLECT THE ACTUAL SUBSURFACE CONDITIONS BETWEEN BORINGS OR BETWEEN SAMPLED STRATA WITHIN THE BOREHOLE. THE LABORATORY SAMPLE DATA AND THE IN SITU (IN-PLACE) TEST DATA CAN BE RELIED ON ONLY TO THE DEGREE OF RELIABILITY INHERENT IN THE STANDARD TEST METHOD. THE OBSERVED WATER LEVELS OR SOIL MOISTURE CONDITIONS INDICATED IN THE SUBSURFACE INVESTIGATIONS ARE AS RECORDED AT THE TIME OF THE INVESTIGATION. THESE WATER LEVELS OR SOIL MOISTURE CONDITIONS MAY VARY CONSIDERABLY WITH TIME ACCORDING TO CLIMATIC CONDITIONS INCLUDING TEMPERATURES, PRECIPITATION AND WIND, AS WELL AS OTHER NON-CLIMATIC FACTORS.

THE BIDDER OR CONTRACTOR IS CAUTIONED THAT DETAILS SHOWN ON THE SUBSURFACE PLANS ARE PRELIMINARY ONLY AND IN MANY CASES THE FINAL DESIGN DETAILS ARE DIFFERENT. FOR BIDDING AND CONSTRUCTION PURPOSES, REFER TO THE CONSTRUCTION PLANS AND DOCUMENTS FOR FINAL DESIGN INFORMATION ON THIS PROJECT. THE DEPARTMENT DOES NOT WARRANT OR GUARANTEE THE SUFFICIENCY OR ACCURACY OF THE INVESTIGATION MADE, NOR THE INTERPRETATIONS MADE, OR OPINION OF THE DEPARTMENT AS TO THE TYPE OF MATERIALS AND CONDITIONS TO BE ENCOUNTERED. THE BIDDER OR CONTRACTOR IS CAUTIONED TO MAKE SUCH INDEPENDENT SUBSURFACE INVESTIGATIONS AS HE DEEMS NECESSARY TO SATISFY HIMSELF AS TO CONDITIONS TO BE ENCOUNTERED ON THE PROJECT. THE CONTRACTOR SHALL HAVE NO CLAIM FOR ADDITIONAL COMPENSATION OR FOR AN EXTENSION OF TIME FOR ANY REASON RESULTING FROM THE ACTUAL CONDITIONS ENCOUNTERED AT THE SITE DIFFERING FROM THOSE INDICATED IN THE SUBSURFACE INFORMATION.

NOTES:

- THE INFORMATION CONTAINED HEREIN IS NOT IMPLIED OR GUARANTEED BY THE N. C. DEPARTMENT OF TRANSPORTATION AS ACCURATE NOR IS IT CONSIDERED PART OF THE PLANS, SPECIFICATIONS OR CONTRACT FOR THE PROJECT.
- BY HAVING REQUESTED THIS INFORMATION, THE CONTRACTOR SPECIFICALLY WAIVES ANY CLAIMS FOR INCREASED COMPENSATION OR EXTENSION OF TIME BASED ON DIFFERENCES BETWEEN THE CONDITIONS INDICATED HEREIN AND THE ACTUAL CONDITIONS AT THE PROJECT SITE.

PERSONNEL

CG2

GOODNIGHT, D.J.

INVESTIGATED BY FALCON ENG.

DRAWN BY CROCKETT, S.C.

CHECKED BY HUNSBERGER, W.S.

SUBMITTED BY FALCON ENG.

DATE JANUARY 2024



DocuSigned by:
Stephen Crockett 1/30/2024
 C5CA5FED48E0435...
 SIGNATURE DATE

DOCUMENT NOT CONSIDERED FINAL
 UNLESS ALL SIGNATURES COMPLETED

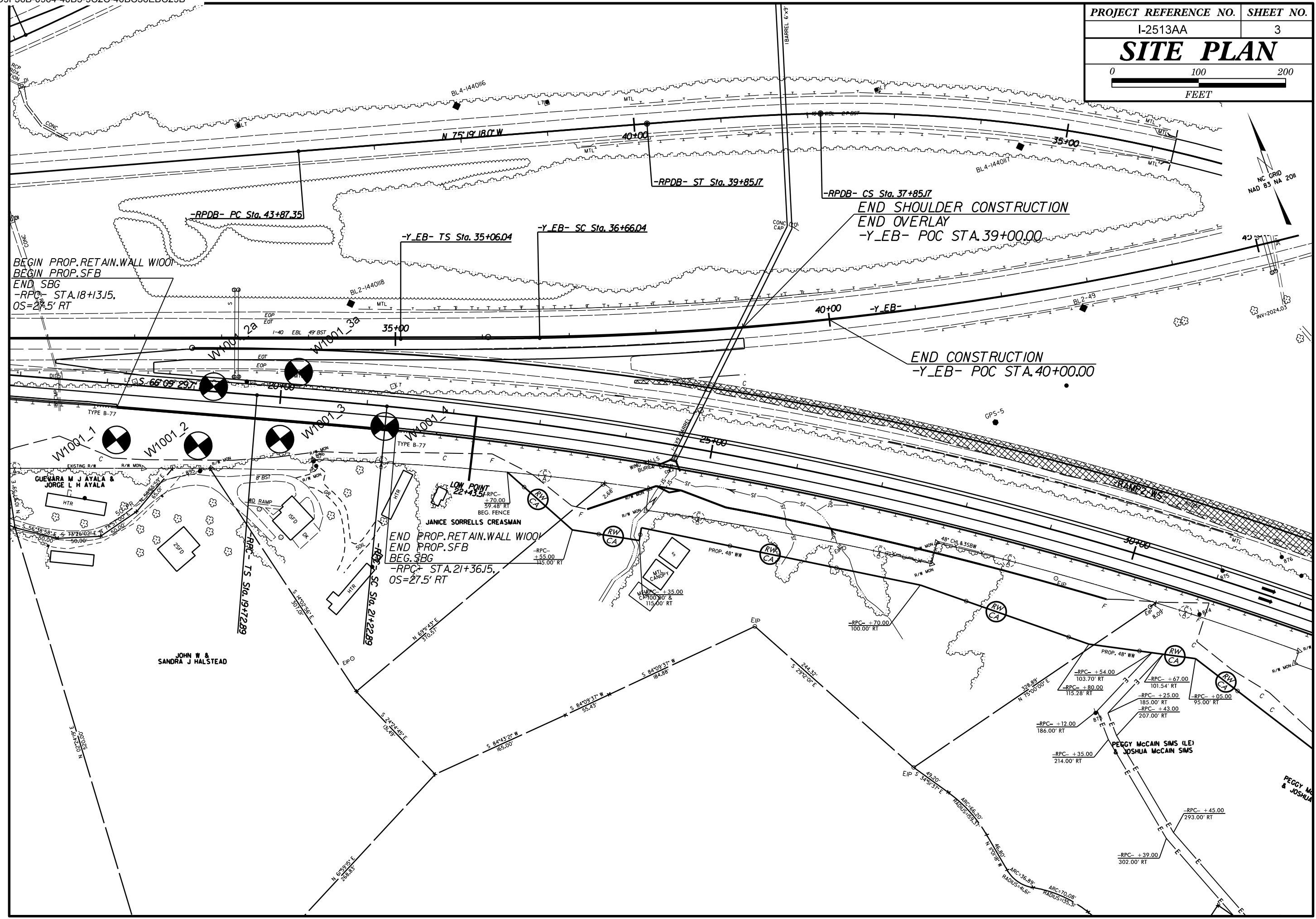
NORTH CAROLINA DEPARTMENT OF TRANSPORTATION DIVISION OF HIGHWAYS GEOTECHNICAL ENGINEERING UNIT

SUBSURFACE INVESTIGATION

SOIL AND ROCK LEGEND, TERMS, SYMBOLS, AND ABBREVIATIONS

SOIL DESCRIPTION										GRADATION										ROCK DESCRIPTION										TERMS AND DEFINITIONS																																																																																																																																																																		
<p>SOIL IS CONSIDERED UNCONSOLIDATED, SEMI-CONSOLIDATED, OR WEATHERED EARTH MATERIALS THAT CAN BE PENETRATED WITH A CONTINUOUS FLIGHT POWER AUGER AND YIELD LESS THAN 100 BLOWS PER FOOT ACCORDING TO THE STANDARD PENETRATION TEST (AASHTO T 206, ASTM D1586). SOIL CLASSIFICATION IS BASED ON THE AASHTO SYSTEM. BASIC DESCRIPTIONS GENERALLY INCLUDE THE FOLLOWING: CONSISTENCY, COLOR, TEXTURE, MOISTURE, AASHTO CLASSIFICATION, AND OTHER PERTINENT FACTORS SUCH AS MINERALOGICAL COMPOSITION, ANGULARITY, STRUCTURE, PLASTICITY, ETC. FOR EXAMPLE, <i>VERY STIFF, GRAY, SILTY CLAY, MOIST WITH INTERBEDDED FINE SAND LAYERS, HIGHLY PLASTIC, A-7-6</i></p>										<p>WELL GRADED - INDICATES A GOOD REPRESENTATION OF PARTICLE SIZES FROM FINE TO COARSE. UNIFORMLY GRADED - INDICATES THAT SOIL PARTICLES ARE ALL APPROXIMATELY THE SAME SIZE. GAP-GRADED - INDICATES A MIXTURE OF UNIFORM PARTICLE SIZES OF TWO OR MORE SIZES.</p>										<p>HARD ROCK IS NON-COASTAL PLAIN MATERIAL THAT WOULD YIELD SPT REFUSAL IF TESTED, AN INFERRED ROCK LINE INDICATES THE LEVEL AT WHICH NON-COASTAL PLAIN MATERIAL WOULD YIELD SPT REFUSAL IS PENETRATION BY A SPLIT SPOON SAMPLER EQUAL TO OR LESS THAN 0.1 FOOT PER 60 BLOWS IN NON-COASTAL PLAIN MATERIAL. THE TRANSITION BETWEEN SOIL AND ROCK IS OFTEN REPRESENTED BY A ZONE OF WEATHERED ROCK. ROCK MATERIALS ARE TYPICALLY DIVIDED AS FOLLOWS:</p>										<p>ALLUVIUM (ALLUV.) - SOILS THAT HAVE BEEN TRANSPORTED BY WATER. AQUIFER - A WATER BEARING FORMATION OR STRATA. ARENACEOUS - APPLIED TO ROCKS THAT HAVE BEEN DERIVED FROM SAND OR THAT CONTAIN SAND. ARGILLACEOUS - APPLIED TO ALL ROCKS OR SUBSTANCES COMPOSED OF CLAY MINERALS, OR HAVING A NOTABLE PROPORTION OF CLAY IN THEIR COMPOSITION, SUCH AS SHALE, SLATE, ETC. ARTESIAN - GROUND WATER THAT IS UNDER SUFFICIENT PRESSURE TO RISE ABOVE THE LEVEL AT WHICH IT IS ENCOUNTERED, BUT WHICH DOES NOT NECESSARILY RISE TO OR ABOVE THE GROUND SURFACE. CALCAREOUS (CALC.) - SOILS THAT CONTAIN APPRECIABLE AMOUNTS OF CALCIUM CARBONATE. COLLUVIUM - ROCK FRAGMENTS MIXED WITH SOIL DEPOSITED BY GRAVITY ON SLOPE OR AT BOTTOM OF SLOPE. CORE RECOVERY (REC.) - TOTAL LENGTH OF ALL MATERIAL RECOVERED IN THE CORE BARREL DIVIDED BY TOTAL LENGTH OF CORE RUN AND EXPRESSED AS A PERCENTAGE. DIKE - A TABULAR BODY OF IGNEOUS ROCK THAT CUTS ACROSS THE STRUCTURE OF ADJACENT ROCKS OR CUTS MASSIVE ROCK. DIP - THE ANGLE AT WHICH A STRATUM OR ANY PLANAR FEATURE IS INCLINED FROM THE HORIZONTAL. DIP DIRECTION (DIP AZIMUTH) - THE DIRECTION OR BEARING OF THE HORIZONTAL TRACE OF THE LINE OF DIP, MEASURED CLOCKWISE FROM NORTH. FAULT - A FRACTURE OR FRACTURE ZONE ALONG WHICH THERE HAS BEEN DISPLACEMENT OF THE SIDES RELATIVE TO ONE ANOTHER PARALLEL TO THE FRACTURE. FISSILE - A PROPERTY OF SPLITTING ALONG CLOSELY SPACED PARALLEL PLANES. FLOAT - ROCK FRAGMENTS ON SURFACE NEAR THEIR ORIGINAL POSITION AND DISLOGGED FROM PARENT MATERIAL. FLOOD PLAIN (FP) - LAND BORDERING A STREAM, BUILT OF SEDIMENTS DEPOSITED BY THE STREAM. FORMATION (FM) - A MAPPABLE GEOLOGIC UNIT THAT CAN BE RECOGNIZED AND TRACED IN THE FIELD. JOINT - FRACTURE IN ROCK ALONG WHICH NO APPRECIABLE MOVEMENT HAS OCCURRED. LEDGE - A SHELF-LIKE RIDGE OR PROJECTION OF ROCK WHOSE THICKNESS IS SMALL COMPARED TO ITS LATERAL EXTENT. LENS - A BODY OF SOIL OR ROCK THAT THINS OUT IN ONE OR MORE DIRECTIONS. MOTTLED (MOT.) - IRREGULARLY MARKED WITH SPOTS OF DIFFERENT COLORS. MOTTLING IN SOILS USUALLY INDICATES POOR AERATION AND LACK OF GOOD DRAINAGE. PERCHED WATER - WATER MAINTAINED ABOVE THE NORMAL GROUND WATER LEVEL BY THE PRESENCE OF AN INTERVENING IMPERVIOUS STRATUM. RESIDUAL (RES.) SOIL - SOIL FORMED IN PLACE BY THE WEATHERING OF ROCK. ROCK QUALITY DESIGNATION (ROD) - A MEASURE OF ROCK QUALITY DESCRIBED BY TOTAL LENGTH OF ROCK SEGMENTS EQUAL TO OR GREATER THAN 4 INCHES DIVIDED BY THE TOTAL LENGTH OF CORE RUN AND EXPRESSED AS A PERCENTAGE. SAPROLITE (SAP.) - RESIDUAL SOIL THAT RETAINS THE RELIC STRUCTURE OR FABRIC OF THE PARENT ROCK. SILL - AN INTRUSIVE BODY OF IGNEOUS ROCK OF APPROXIMATELY UNIFORM THICKNESS AND RELATIVELY THIN COMPARED WITH ITS LATERAL EXTENT, THAT HAS BEEN EMPLACED PARALLEL TO THE BEDDING OR SCHISTOSITY OF THE INTRUDED ROCKS. SLICKENISE - POLISHED AND STRIATED SURFACE THAT RESULTS FROM FRICTION ALONG A FAULT OR SLIP PLANE. STANDARD PENETRATION TEST (PENETRATION RESISTANCE) (SPT) - NUMBER OF BLOWS (N OR BPF) OF A 140 LB. HAMMER FALLING 30 INCHES REQUIRED TO PRODUCE A PENETRATION OF 1 FOOT INTO SOIL WITH A 2 INCH OUTSIDE DIAMETER SPLIT SPOON SAMPLER. SPT REFUSAL IS PENETRATION EQUAL TO OR LESS THAN 0.1 FOOT PER 60 BLOWS. STRATA CORE RECOVERY (SREC.) - TOTAL LENGTH OF STRATA MATERIAL RECOVERED DIVIDED BY TOTAL LENGTH OF STRATUM AND EXPRESSED AS A PERCENTAGE. STRATA ROCK QUALITY DESIGNATION (SROD) - A MEASURE OF ROCK QUALITY DESCRIBED BY TOTAL LENGTH OF ROCK SEGMENTS WITHIN A STRATUM EQUAL TO OR GREATER THAN 4 INCHES DIVIDED BY THE TOTAL LENGTH OF STRATA AND EXPRESSED AS A PERCENTAGE. TOPSOIL (TS.) - SURFACE SOILS USUALLY CONTAINING ORGANIC MATTER.</p>																																																																																																																																																																		
SOIL LEGEND AND AASHTO CLASSIFICATION										ANGULARITY OF GRAINS										WEATHERED ROCK (WR)										NON-COASTAL PLAIN MATERIAL THAT WOULD YIELD SPT N VALUES > 100 BLOWS PER FOOT IF TESTED.																																																																																																																																																																		
<table border="1" style="width: 100%; border-collapse: collapse;"> <tr> <th colspan="5">GRANULAR MATERIALS (<= 35% PASSING #200)</th> <th colspan="5">SILT-CLAY MATERIALS (> 35% PASSING #200)</th> <th colspan="5">ORGANIC MATERIALS</th> </tr> <tr> <th>GROUP CLASS.</th> <th>A-1</th> <th>A-3</th> <th>A-2</th> <th>A-2</th> <th>A-4</th> <th>A-5</th> <th>A-6</th> <th>A-7</th> <th>A-1, A-2</th> <th>A-3</th> <th>A-4, A-5</th> <th>A-6, A-7</th> <th colspan="5"></th> </tr> <tr> <th>SYMBOL</th> <td></td> <td></td> <td></td> <td></td> <td></td> <td></td> <td></td> <td></td> <td></td> <td></td> <td></td> <td></td> <td colspan="5"></td> </tr> <tr> <th>% PASSING #10 #40 #200</th> <td>50 MX 30 MX 15 MX</td> <td>50 MX 25 MX 10 MX</td> <td>51 MN 35 MX 35 MX</td> <td>40 MX 41 MN 40 MX 41 MN</td> <td>40 MX 41 MN 40 MX 41 MN</td> <td>40 MX 41 MN 40 MX 41 MN</td> <td>40 MX 41 MN 40 MX 41 MN</td> <td>40 MX 41 MN 40 MX 41 MN</td> <td>40 MX 41 MN 40 MX 41 MN</td> <td>40 MX 41 MN 40 MX 41 MN</td> <td>40 MX 41 MN 40 MX 41 MN</td> <td>40 MX 41 MN 40 MX 41 MN</td> <td colspan="5"></td> </tr> <tr> <th>MATERIAL PASSING #40 LL PI</th> <td colspan="2">-</td> <td>NP</td> <td>40 MX 10 MX</td> <td>41 MN 10 MX</td> <td>40 MX 11 MN</td> <td>41 MN 11 MN</td> <td>40 MX 10 MX</td> <td>41 MN 10 MX</td> <td>40 MX 11 MN</td> <td>41 MN 11 MN</td> <td colspan="5"></td> </tr> <tr> <th>GROUP INDEX</th> <td colspan="2">0</td> <td>0</td> <td>0</td> <td>4 MX</td> <td>8 MX</td> <td>12 MX</td> <td>16 MX</td> <td>NO MX</td> <td colspan="5"></td> </tr> <tr> <th>USUAL TYPES OF MAJOR MATERIALS</th> <td colspan="2">STONE FRAGS. GRAVEL, AND SAND</td> <td>FINE SAND</td> <td colspan="2">SILTY OR CLAYEY GRAVEL AND SAND</td> <td>SILTY SOILS</td> <td colspan="2">CLAYEY SOILS</td> <td colspan="5"></td> </tr> <tr> <th>GEN. RATING AS SUBGRADE</th> <td colspan="5">EXCELLENT TO GOOD</td> <td colspan="5">FAIR TO POOR</td> <td>FAIR TO POOR</td> <td>POOR</td> <td colspan="5">UNSATURABLE</td> </tr> <tr> <td colspan="10">PI OF A-7-5 SUBGROUP IS <= LL - 30 ; PI OF A-7-6 SUBGROUP IS > LL - 30</td> <td colspan="10"></td> </tr> </table>										GRANULAR MATERIALS (<= 35% PASSING #200)					SILT-CLAY MATERIALS (> 35% PASSING #200)					ORGANIC MATERIALS					GROUP CLASS.	A-1	A-3	A-2	A-2	A-4	A-5	A-6	A-7	A-1, A-2	A-3	A-4, A-5	A-6, A-7						SYMBOL																		% PASSING #10 #40 #200	50 MX 30 MX 15 MX	50 MX 25 MX 10 MX	51 MN 35 MX 35 MX	40 MX 41 MN 40 MX 41 MN	40 MX 41 MN 40 MX 41 MN	40 MX 41 MN 40 MX 41 MN	40 MX 41 MN 40 MX 41 MN	40 MX 41 MN 40 MX 41 MN	40 MX 41 MN 40 MX 41 MN	40 MX 41 MN 40 MX 41 MN	40 MX 41 MN 40 MX 41 MN	40 MX 41 MN 40 MX 41 MN						MATERIAL PASSING #40 LL PI	-		NP	40 MX 10 MX	41 MN 10 MX	40 MX 11 MN	41 MN 11 MN	40 MX 10 MX	41 MN 10 MX	40 MX 11 MN	41 MN 11 MN						GROUP INDEX	0		0	0	4 MX	8 MX	12 MX	16 MX	NO MX						USUAL TYPES OF MAJOR MATERIALS	STONE FRAGS. GRAVEL, AND SAND		FINE SAND	SILTY OR CLAYEY GRAVEL AND SAND		SILTY SOILS	CLAYEY SOILS							GEN. RATING AS SUBGRADE	EXCELLENT TO GOOD					FAIR TO POOR					FAIR TO POOR	POOR	UNSATURABLE					PI OF A-7-5 SUBGROUP IS <= LL - 30 ; PI OF A-7-6 SUBGROUP IS > LL - 30																				<p>THE ANGULARITY OR ROUNDNESS OF SOIL GRAINS IS DESIGNATED BY THE TERMS: ANGULAR, SUBANGULAR, SUBROUNDED, OR ROUNDED.</p>										<p>CRISTALLINE ROCK (CR)</p> <p>NON-CRYSTALLINE ROCK (NCR)</p> <p>COASTAL PLAIN SEDIMENTARY ROCK (CP)</p>										<p>CRISTALLINE ROCK (CR) - FINE TO COARSE GRAIN IGNEOUS AND METAMORPHIC ROCK THAT WOULD YIELD SPT REFUSAL IF TESTED. ROCK TYPE INCLUDES GRANITE, GNEISS, GABBRO, SCHIST, ETC.</p> <p>NON-CRYSTALLINE ROCK (NCR) - FINE TO COARSE GRAIN METAMORPHIC AND NON-COASTAL PLAIN SEDIMENTARY ROCK THAT WOULD YIELD SPT REFUSAL IF TESTED. ROCK TYPE INCLUDES PHYLLITE, SLATE, SANDSTONE, ETC.</p> <p>COASTAL PLAIN SEDIMENTARY ROCK (CP) - COASTAL PLAIN SEDIMENTS CEMENTED INTO ROCK, BUT MAY NOT YIELD SPT REFUSAL. ROCK TYPE INCLUDES LIMESTONE, SANDSTONE, CEMENTED SHELL BEDS, ETC.</p>									
GRANULAR MATERIALS (<= 35% PASSING #200)					SILT-CLAY MATERIALS (> 35% PASSING #200)					ORGANIC MATERIALS																																																																																																																																																																																						
GROUP CLASS.	A-1	A-3	A-2	A-2	A-4	A-5	A-6	A-7	A-1, A-2	A-3	A-4, A-5	A-6, A-7																																																																																																																																																																																				
SYMBOL																																																																																																																																																																																																
% PASSING #10 #40 #200	50 MX 30 MX 15 MX	50 MX 25 MX 10 MX	51 MN 35 MX 35 MX	40 MX 41 MN 40 MX 41 MN	40 MX 41 MN 40 MX 41 MN	40 MX 41 MN 40 MX 41 MN	40 MX 41 MN 40 MX 41 MN	40 MX 41 MN 40 MX 41 MN	40 MX 41 MN 40 MX 41 MN	40 MX 41 MN 40 MX 41 MN	40 MX 41 MN 40 MX 41 MN	40 MX 41 MN 40 MX 41 MN																																																																																																																																																																																				
MATERIAL PASSING #40 LL PI	-		NP	40 MX 10 MX	41 MN 10 MX	40 MX 11 MN	41 MN 11 MN	40 MX 10 MX	41 MN 10 MX	40 MX 11 MN	41 MN 11 MN																																																																																																																																																																																					
GROUP INDEX	0		0	0	4 MX	8 MX	12 MX	16 MX	NO MX																																																																																																																																																																																							
USUAL TYPES OF MAJOR MATERIALS	STONE FRAGS. GRAVEL, AND SAND		FINE SAND	SILTY OR CLAYEY GRAVEL AND SAND		SILTY SOILS	CLAYEY SOILS																																																																																																																																																																																									
GEN. RATING AS SUBGRADE	EXCELLENT TO GOOD					FAIR TO POOR					FAIR TO POOR	POOR	UNSATURABLE																																																																																																																																																																																			
PI OF A-7-5 SUBGROUP IS <= LL - 30 ; PI OF A-7-6 SUBGROUP IS > LL - 30																																																																																																																																																																																																
MINERALOGICAL COMPOSITION										COMPRESSION										WEATHERING										ROCK HARDNESS																																																																																																																																																																		
<p>MINERAL NAMES SUCH AS QUARTZ, FELDSPAR, MICA, TALC, KAOLIN, ETC. ARE USED IN DESCRIPTIONS WHEN THEY ARE CONSIDERED OF SIGNIFICANCE.</p>										<p>SLIGHTLY COMPRESSIBLE LL < 31 MODERATELY COMPRESSIBLE LL = 31 - 50 HIGHLY COMPRESSIBLE LL > 50</p>										<p>FRESH - ROCK FRESH, CRYSTALS BRIGHT, FEW JOINTS MAY SHOW SLIGHT STAINING. ROCK RINGS UNDER HAMMER IF CRYSTALLINE.</p> <p>VERY SLIGHT (IV SLI.) - ROCK GENERALLY FRESH, JOINTS STAINED, SOME JOINTS MAY SHOW THIN CLAY COATINGS IF OPEN. CRYSTALS ON A BROKEN SPECIMEN FACE SHINE BRIGHTLY. ROCK RINGS UNDER HAMMER BLOWS IF OF A CRYSTALLINE NATURE.</p> <p>SLIGHT (SLI.) - ROCK GENERALLY FRESH, JOINTS STAINED AND DISCOLORATION EXTENDS INTO ROCK UP TO 1 INCH. OPEN JOINTS MAY CONTAIN CLAY. IN GRANITOID ROCKS SOME OCCASIONAL FELDSPAR CRYSTALS ARE DULL AND DISCOLORED. CRYSTALLINE ROCKS RING UNDER HAMMER BLOWS.</p> <p>MODERATE (MOD.) - SIGNIFICANT PORTIONS OF ROCK SHOW DISCOLORATION AND WEATHERING EFFECTS. IN GRANITOID ROCKS, MOST FELDSPARS ARE DULL AND DISCOLORED, SOME SHOW CLAY. ROCK HAS DULL SOUND UNDER HAMMER BLOWS AND SHOWS SIGNIFICANT LOSS OF STRENGTH AS COMPARED WITH FRESH ROCK.</p> <p>MODERATELY SEVERE (MOD. SEV.) - ALL ROCK EXCEPT QUARTZ DISCOLORED OR STAINED. IN GRANITOID ROCKS, ALL FELDSPARS DULL AND DISCOLORED AND A MAJORITY SHOW KAOLINIZATION. ROCK SHOWS SEVERE LOSS OF STRENGTH AND CAN BE EXCAVATED WITH A GEOLOGIST'S PICK. ROCK GIVES "CLUNK" SOUND WHEN STRUCK. <i>IF TESTED, WOULD YIELD SPT REFUSAL</i></p> <p>SEVERE (SEV.) - ALL ROCK EXCEPT QUARTZ DISCOLORED OR STAINED. ROCK FABRIC CLEAR AND EVIDENT BUT REDUCED IN STRENGTH TO STRONG SOIL. IN GRANITOID ROCKS ALL FELDSPARS ARE KAOLINIZED TO SOME EXTENT. SOME FRAGMENTS OF STRONG ROCK USUALLY REMAIN. <i>IF TESTED, WOULD YIELD SPT N VALUES > 100 BPF</i></p> <p>VERY SEVERE (IV SEV.) - ALL ROCK EXCEPT QUARTZ DISCOLORED OR STAINED. ROCK FABRIC ELEMENTS ARE DISCERNIBLE BUT MASS IS EFFECTIVELY REDUCED TO SOIL STATUS, WITH ONLY FRAGMENTS OF STRONG ROCK REMAINING. SAPROLITE IS AN EXAMPLE OF ROCK WEATHERED TO A DEGREE THAT ONLY MINOR VESTIGES OF ORIGINAL ROCK FABRIC REMAIN. <i>IF TESTED, WOULD YIELD SPT N VALUES < 100 BPF</i></p> <p>COMPLETE - ROCK REDUCED TO SOIL. ROCK FABRIC NOT DISCERNIBLE, OR DISCERNIBLE ONLY IN SMALL AND SCATTERED CONCENTRATIONS. QUARTZ MAY BE PRESENT AS DIKES OR STRINGERS. SAPROLITE IS ALSO AN EXAMPLE.</p>										<p>VERY HARD - CANNOT BE SCRATCHED BY KNIFE OR SHARP PICK. BREAKING OF HAND SPECIMENS REQUIRES SEVERAL HARD BLOWS OF THE GEOLOGIST'S PICK.</p> <p>HARD - CAN BE SCRATCHED BY KNIFE OR PICK ONLY WITH DIFFICULTY. HARD HAMMER BLOWS REQUIRED TO DETACH HAND SPECIMEN.</p> <p>MODERATELY HARD - CAN BE SCRATCHED BY KNIFE OR PICK. GOUGES OR GROOVES TO 0.25 INCHES DEEP CAN BE EXCAVATED BY HARD BLOW OF A GEOLOGIST'S PICK. HAND SPECIMENS CAN BE DETACHED BY MODERATE BLOWS.</p> <p>MEDIUM HARD - CAN BE GROUDED OR GOUGED 0.05 INCHES DEEP BY FIRM PRESSURE OF KNIFE OR PICK POINT. CAN BE EXCAVATED IN SMALL CHIPS TO PIECES 1 INCH MAXIMUM SIZE BY HARD BLOWS OF THE POINT OF A GEOLOGIST'S PICK.</p> <p>SOFT - CAN BE GROUDED OR GOUGED READILY BY KNIFE OR PICK. CAN BE EXCAVATED IN FRAGMENTS FROM CHIPS TO SEVERAL INCHES IN SIZE BY MODERATE BLOWS OF A PICK POINT. SMALL, THIN PIECES CAN BE BROKEN BY FINGER PRESSURE.</p> <p>VERY SOFT - CAN BE CARVED WITH KNIFE. CAN BE EXCAVATED READILY WITH POINT OF PICK. PIECES 1 INCH OR MORE IN THICKNESS CAN BE BROKEN BY FINGER PRESSURE. CAN BE SCRATCHED READILY BY FINGER NAIL.</p>																																																																																																																																																																		
PERCENTAGE OF MATERIAL										GROUND WATER										MISCELLANEOUS SYMBOLS										RECOMMENDATION SYMBOLS																																																																																																																																																																		
<table border="1" style="width: 100%; border-collapse: collapse;"> <tr> <th>ORGANIC MATERIAL</th> <th>GRANULAR SOILS</th> <th>SILT - CLAY SOILS</th> <th>OTHER MATERIAL</th> </tr> <tr> <td>TRACE OF ORGANIC MATTER</td> <td>2 - 3%</td> <td>3 - 5%</td> <td>TRACE</td> </tr> <tr> <td>LITTLE ORGANIC MATTER</td> <td>3 - 5%</td> <td>5 - 12%</td> <td>LITTLE</td> </tr> <tr> <td>MODERATELY ORGANIC</td> <td>5 - 10%</td> <td>12 - 20%</td> <td>SOME</td> </tr> <tr> <td>HIGHLY ORGANIC</td> <td>> 10%</td> <td>> 20%</td> <td>HIGHLY</td> </tr> <tr> <td></td> <td></td> <td></td> <td>35% AND ABOVE</td> </tr> </table>										ORGANIC MATERIAL	GRANULAR SOILS	SILT - CLAY SOILS	OTHER MATERIAL	TRACE OF ORGANIC MATTER	2 - 3%	3 - 5%	TRACE	LITTLE ORGANIC MATTER	3 - 5%	5 - 12%	LITTLE	MODERATELY ORGANIC	5 - 10%	12 - 20%	SOME	HIGHLY ORGANIC	> 10%	> 20%	HIGHLY				35% AND ABOVE	<p>WATER LEVEL IN BORE HOLE IMMEDIATELY AFTER DRILLING</p> <p>STATIC WATER LEVEL AFTER 24 HOURS</p> <p>PERCHED WATER, SATURATED ZONE, OR WATER BEARING STRATA</p> <p>SPRING OR SEEP</p>										<p>ROADWAY EMBANKMENT (RE) WITH SOIL DESCRIPTION</p> <p>SOIL SYMBOL</p> <p>ARTIFICIAL FILL (AF) OTHER THAN ROADWAY EMBANKMENT</p> <p>INFERRED SOIL BOUNDARY</p> <p>INFERRED ROCK LINE</p> <p>ALLUVIAL SOIL BOUNDARY</p>										<p>UNCLASSIFIED EXCAVATION - UNSUITABLE WASTE</p> <p>UNCLASSIFIED EXCAVATION - ACCEPTABLE DEGRADABLE ROCK</p> <p>UNCLASSIFIED EXCAVATION - ACCEPTABLE, BUT NOT TO BE USED IN THE TOP 3 FEET OF EMBANKMENT OR BACKFILL</p>																																																																																																																																										
ORGANIC MATERIAL	GRANULAR SOILS	SILT - CLAY SOILS	OTHER MATERIAL																																																																																																																																																																																													
TRACE OF ORGANIC MATTER	2 - 3%	3 - 5%	TRACE																																																																																																																																																																																													
LITTLE ORGANIC MATTER	3 - 5%	5 - 12%	LITTLE																																																																																																																																																																																													
MODERATELY ORGANIC	5 - 10%	12 - 20%	SOME																																																																																																																																																																																													
HIGHLY ORGANIC	> 10%	> 20%	HIGHLY																																																																																																																																																																																													
			35% AND ABOVE																																																																																																																																																																																													
TEXTURE OR GRAIN SIZE										CONSISTENCY OR DENSENESS										ABBREVIATIONS										EQUIPMENT USED ON SUBJECT PROJECT																																																																																																																																																																		
<table border="1" style="width: 100%; border-collapse: collapse;"> <tr> <th>U.S. STD. SIEVE SIZE OPENING (MM)</th> <th>4</th> <th>10</th> <th>40</th> <th>60</th> <th>200</th> <th>270</th> </tr> <tr> <td></td> <td>4.75</td> <td>2.00</td> <td>0.42</td> <td>0.25</td> <td>0.075</td> <td>0.053</td> </tr> <tr> <th>BOULDER (BLDR.)</th> <th>COBBLE (COB.)</th> <th>GRAVEL (GR.)</th> <th>COARSE SAND (CSE. SD.)</th> <th>FINE SAND (F SD.)</th> <th>SILT (SL.)</th> <th>CLAY (CL.)</th> </tr> <tr> <td></td> <td></td> <td></td> <td></td> <td></td> <td></td> <td></td> </tr> </table>										U.S. STD. SIEVE SIZE OPENING (MM)	4	10	40	60	200	270		4.75	2.00	0.42	0.25	0.075	0.053	BOULDER (BLDR.)	COBBLE (COB.)	GRAVEL (GR.)	COARSE SAND (CSE. SD.)	FINE SAND (F SD.)	SILT (SL.)	CLAY (CL.)								<table border="1" style="width: 100%; border-collapse: collapse;"> <tr> <th>PRIMARY SOIL TYPE</th> <th>COMPACTNESS OR CONSISTENCY</th> <th>RANGE OF STANDARD PENETRATION RESISTANCE (N-VALUE)</th> <th>RANGE OF UNCONFINED COMPRESSIVE STRENGTH (TONS/FT²)</th> </tr> <tr> <td>GENERALLY GRANULAR MATERIAL (NON-COHESIVE)</td> <td>VERY LOOSE LOOSE MEDIUM DENSE DENSE VERY DENSE</td> <td>< 4 4 TO 10 10 TO 30 30 TO 50 > 50</td> <td>N/A</td> </tr> <tr> <td>GENERALLY SILT-CLAY MATERIAL (COHESIVE)</td> <td>VERY SOFT SOFT MEDIUM STIFF STIFF VERY STIFF HARD</td> <td>< 2 2 TO 4 4 TO 8 8 TO 15 15 TO 30 > 30</td> <td>< 0.25 0.25 TO 0.5 0.5 TO 1.0 1 TO 2 2 TO 4 > 4</td> </tr> </table>										PRIMARY SOIL TYPE	COMPACTNESS OR CONSISTENCY	RANGE OF STANDARD PENETRATION RESISTANCE (N-VALUE)	RANGE OF UNCONFINED COMPRESSIVE STRENGTH (TONS/FT ²)	GENERALLY GRANULAR MATERIAL (NON-COHESIVE)	VERY LOOSE LOOSE MEDIUM DENSE DENSE VERY DENSE	< 4 4 TO 10 10 TO 30 30 TO 50 > 50	N/A	GENERALLY SILT-CLAY MATERIAL (COHESIVE)	VERY SOFT SOFT MEDIUM STIFF STIFF VERY STIFF HARD	< 2 2 TO 4 4 TO 8 8 TO 15 15 TO 30 > 30	< 0.25 0.25 TO 0.5 0.5 TO 1.0 1 TO 2 2 TO 4 > 4	<p>AR - AUGER REFUSAL BT - BORING TERMINATED CL - CLAY CPT - CONE PENETRATION TEST CSE - COARSE DMT - DILATOMETER TEST DPT - DYNAMIC PENETRATION TEST e - VOID RATIO F - FINE FOSS. - FOSSILIFEROUS FRAC. - FRACTURED, FRACTURES FRAGS. - FRAGMENTS HI. - HIGHLY</p> <p>MED. - MEDIUM MICA - MICACEOUS MOD. - MODERATELY NP - NON PLASTIC ORG. - ORGANIC PMT - PRESSUREMETER TEST SAP. - SAPROLITIC SD. - SAND, SANDY SL. - SILT, SILTY SLI. - SLIGHTLY TCR - TRICONE REFUSAL w - MOISTURE CONTENT V - VERY</p> <p>VST - VANE SHEAR TEST WEA. - WEATHERED W - UNIT WEIGHT W_d - DRY UNIT WEIGHT</p> <p>SAMPLE ABBREVIATIONS</p> <p>S - BULK SS - SPLIT SPOON ST - SHELBY TUBE RS - ROCK RT - RECOMPACTED TRIAXIAL CBR - CALIFORNIA BEARING RATIO</p>										<p>DRILL UNITS:</p> <p><input type="checkbox"/> CME-45C</p> <p><input type="checkbox"/> CME-55</p> <p><input checked="" type="checkbox"/> CME-550X</p> <p><input type="checkbox"/> VANE SHEAR TEST</p> <p><input type="checkbox"/> PORTABLE HOIST</p> <p><input type="checkbox"/></p> <p><input type="checkbox"/></p> <p><input type="checkbox"/></p>																																																																																																																										
U.S. STD. SIEVE SIZE OPENING (MM)	4	10	40	60	200	270																																																																																																																																																																																										
	4.75	2.00	0.42	0.25	0.075	0.053																																																																																																																																																																																										
BOULDER (BLDR.)	COBBLE (COB.)	GRAVEL (GR.)	COARSE SAND (CSE. SD.)	FINE SAND (F SD.)	SILT (SL.)	CLAY (CL.)																																																																																																																																																																																										
PRIMARY SOIL TYPE	COMPACTNESS OR CONSISTENCY	RANGE OF STANDARD PENETRATION RESISTANCE (N-VALUE)	RANGE OF UNCONFINED COMPRESSIVE STRENGTH (TONS/FT ²)																																																																																																																																																																																													
GENERALLY GRANULAR MATERIAL (NON-COHESIVE)	VERY LOOSE LOOSE MEDIUM DENSE DENSE VERY DENSE	< 4 4 TO 10 10 TO 30 30 TO 50 > 50	N/A																																																																																																																																																																																													
GENERALLY SILT-CLAY MATERIAL (COHESIVE)	VERY SOFT SOFT MEDIUM STIFF STIFF VERY STIFF HARD	< 2 2 TO 4 4 TO 8 8 TO 15 15 TO 30 > 30	< 0.25 0.25 TO 0.5 0.5 TO 1.0 1 TO 2 2 TO 4 > 4																																																																																																																																																																																													
SOIL MOISTURE - CORRELATION OF TERMS										FRACATURE SPACING										BEDDING										INDURATION																																																																																																																																																																		
<table border="1" style="width: 100%; border-collapse: collapse;"> <tr> <th>SOIL MOISTURE SCALE (ATTERBERG LIMITS)</th> <th>FIELD MOISTURE DESCRIPTION</th> <th>GUIDE FOR FIELD MOISTURE DESCRIPTION</th> </tr> <tr> <td>LL - LIQUID LIMIT</td> <td>- SATURATED - (SAT.)</td> <td>USUALLY LIQUID; VERY WET, USUALLY FROM BELOW THE GROUND WATER TABLE</td> </tr> <tr> <td>PLASTIC RANGE (PI)</td> <td>- WET - (W)</td> <td>SEMISOLID; REQUIRES DRYING TO ATTAIN OPTIMUM MOISTURE</td> </tr> <tr> <td>OM - OPTIMUM MOISTURE SHRINKAGE LIMIT</td> <td>- MOIST - (M)</td> <td>SOLID; AT OR NEAR OPTIMUM MOISTURE</td> </tr> <tr> <td>SL - SHRINKAGE LIMIT</td> <td>- DRY - (D)</td> <td>REQUIRES ADDITIONAL WATER TO ATTAIN OPTIMUM MOISTURE</td> </tr> </table>										SOIL MOISTURE SCALE (ATTERBERG LIMITS)	FIELD MOISTURE DESCRIPTION	GUIDE FOR FIELD MOISTURE DESCRIPTION	LL - LIQUID LIMIT	- SATURATED - (SAT.)	USUALLY LIQUID; VERY WET, USUALLY FROM BELOW THE GROUND WATER TABLE	PLASTIC RANGE (PI)	- WET - (W)	SEMISOLID; REQUIRES DRYING TO ATTAIN OPTIMUM MOISTURE	OM - OPTIMUM MOISTURE SHRINKAGE LIMIT	- MOIST - (M)	SOLID; AT OR NEAR OPTIMUM MOISTURE	SL - SHRINKAGE LIMIT	- DRY - (D)	REQUIRES ADDITIONAL WATER TO ATTAIN OPTIMUM MOISTURE	<table border="1" style="width: 100%; border-collapse: collapse;"> <tr> <th>TERM</th> <th>SPACING</th> <th>TERM</th> <th>THICKNESS</th> </tr> <tr> <td>VERY WIDE</td> <td>MORE THAN 10 FEET</td> <td>VERY THICKLY BEDDED</td> <td>4 FEET</td> </tr> <tr> <td>WIDE</td> <td>3 TO 10 FEET</td> <td>THICKLY BEDDED</td> <td>1.5 - 4 FEET</td> </tr> <tr> <td>MODERATELY CLOSE</td> <td>1 TO 3 FEET</td> <td>THINLY BEDDED</td> <td>0.16 - 1.5 FEET</td> </tr> <tr> <td>CLOSE</td> <td>0.16 TO 1 FOOT</td> <td>VERY THINLY BEDDED</td> <td>0.03 - 0.16 FEET</td> </tr> <tr> <td>VERY CLOSE</td> <td>LESS THAN 0.16 FEET</td> <td>THICKLY LAMINATED</td> <td>0.008 - 0.03 FEET</td> </tr> <tr> <td></td> <td></td> <td>THINLY LAMINATED</td> <td>< 0.008 FEET</td> </tr> </table>										TERM	SPACING	TERM	THICKNESS	VERY WIDE	MORE THAN 10 FEET	VERY THICKLY BEDDED	4 FEET	WIDE	3 TO 10 FEET	THICKLY BEDDED	1.5 - 4 FEET	MODERATELY CLOSE	1 TO 3 FEET	THINLY BEDDED	0.16 - 1.5 FEET	CLOSE	0.16 TO 1 FOOT	VERY THINLY BEDDED	0.03 - 0.16 FEET	VERY CLOSE	LESS THAN 0.16 FEET	THICKLY LAMINATED	0.008 - 0.03 FEET			THINLY LAMINATED	< 0.008 FEET	<p>FOR SEDIMENTARY ROCKS, INDURATION IS THE HARDENING OF MATERIAL BY CEMENTING, HEAT, PRESSURE, ETC.</p> <p>FRIABLE - RUBBING WITH FINGER FREES NUMEROUS GRAINS; GENTLE BLOW BY HAMMER DISINTEGRATES SAMPLE.</p> <p>MODERATELY INDURATED - GRAINS CAN BE SEPARATED FROM SAMPLE WITH STEEL PROBE; BREAKS EASILY WHEN HIT WITH HAMMER.</p> <p>INDURATED - GRAINS ARE DIFFICULT TO SEPARATE WITH STEEL PROBE; DIFFICULT TO BREAK WITH HAMMER.</p> <p>EXTREMELY INDURATED - SHARP HAMMER BLOWS REQUIRED TO BREAK SAMPLE; SAMPLE BREAKS ACROSS GRAINS.</p>										<p>BENCH MARK: ELEVATIONS TAKEN FROM I2513.ls.tbl.in</p> <p>DATE: 04/15/2022</p> <p style="text-align: right;">ELEVATION: FEET</p>																																																																																																																							
SOIL MOISTURE SCALE (ATTERBERG LIMITS)	FIELD MOISTURE DESCRIPTION	GUIDE FOR FIELD MOISTURE DESCRIPTION																																																																																																																																																																																														
LL - LIQUID LIMIT	- SATURATED - (SAT.)	USUALLY LIQUID; VERY WET, USUALLY FROM BELOW THE GROUND WATER TABLE																																																																																																																																																																																														
PLASTIC RANGE (PI)	- WET - (W)	SEMISOLID; REQUIRES DRYING TO ATTAIN OPTIMUM MOISTURE																																																																																																																																																																																														
OM - OPTIMUM MOISTURE SHRINKAGE LIMIT	- MOIST - (M)	SOLID; AT OR NEAR OPTIMUM MOISTURE																																																																																																																																																																																														
SL - SHRINKAGE LIMIT	- DRY - (D)	REQUIRES ADDITIONAL WATER TO ATTAIN OPTIMUM MOISTURE																																																																																																																																																																																														
TERM	SPACING	TERM	THICKNESS																																																																																																																																																																																													
VERY WIDE	MORE THAN 10 FEET	VERY THICKLY BEDDED	4 FEET																																																																																																																																																																																													
WIDE	3 TO 10 FEET	THICKLY BEDDED	1.5 - 4 FEET																																																																																																																																																																																													
MODERATELY CLOSE	1 TO 3 FEET	THINLY BEDDED	0.16 - 1.5 FEET																																																																																																																																																																																													
CLOSE	0.16 TO 1 FOOT	VERY THINLY BEDDED	0.03 - 0.16 FEET																																																																																																																																																																																													
VERY CLOSE	LESS THAN 0.16 FEET	THICKLY LAMINATED	0.008 - 0.03 FEET																																																																																																																																																																																													
		THINLY LAMINATED	< 0.008 FEET																																																																																																																																																																																													
PLASTICITY										NOTES:										INDURATION										INDURATION																																																																																																																																																																		
<table border="1" style="width: 100%; border-collapse: collapse;"> <tr> <th>NON PLASTIC</th> <th>PLASTICITY INDEX (PI)</th> <th>DRY STRENGTH</th> </tr> <tr> <td></td> <td>0-5</td> <td>VERY LOW</td> </tr> <tr> <td>SLIGHTLY PLASTIC</td> <td>6-15</td> <td>SLIGHT</td> </tr> <tr> <td>MODERATELY PLASTIC</td> <td>16-25</td> <td>MEDIUM</td> </tr> <tr> <td>HIGHLY PLASTIC</td> <td>26 OR MORE</td> <td>HIGH</td> </tr> </table>										NON PLASTIC	PLASTICITY INDEX (PI)	DRY STRENGTH		0-5	VERY LOW	SLIGHTLY PLASTIC	6-15	SLIGHT	MODERATELY PLASTIC	16-25	MEDIUM	HIGHLY PLASTIC	26 OR MORE	HIGH	<p>FIAD - FILLED IMMEDIATELY AFTER DRILLING</p>										<p>INDURATION</p>										<p>INDURATION</p>																																																																																																																																																			
NON PLASTIC	PLASTICITY INDEX (PI)	DRY STRENGTH																																																																																																																																																																																														
	0-5	VERY LOW																																																																																																																																																																																														
SLIGHTLY PLASTIC	6-15	SLIGHT																																																																																																																																																																																														
MODERATELY PLASTIC	16-25	MEDIUM																																																																																																																																																																																														
HIGHLY PLASTIC	26 OR MORE	HIGH																																																																																																																																																																																														
COLOR										INDURATION										INDURATION										INDURATION																																																																																																																																																																		
<p>DESCRIPTIONS MAY INCLUDE COLOR OR COLOR COMBINATIONS (TAN, RED, YELLOW-BROWN, BLUE-BROWN). MODIFIERS SUCH AS LIGHT, DARK, STREAKED, ETC. ARE USED TO DESCRIBE APPEARANCE.</p>										<p>INDURATION</p>										<p>INDURATION</p>										<p>INDURATION</p>																																																																																																																																																																		

PROJECT REFERENCE NO.	SHEET NO.
I-2513AA	3
SITE PLAN	
0 100 200 FEET	



BEGIN PROP. RETAIN. WALL W/001
 BEGIN PROP. SFB
 END SFB
 -RPC- STA. 18+13.15,
 OS=27.5' RT

-Y_EB- TS Sta. 35+06.04

-Y_EB- SC Sta. 36+66.04

-RPDB- CS Sta. 37+85.17
 END SHOULDER CONSTRUCTION
 END OVERLAY
 -Y_EB- POC STA. 39+00.00

END CONSTRUCTION
 -Y_EB- POC STA. 40+00.00

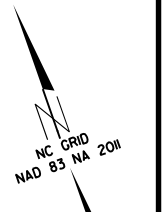
END PROP. RETAIN. WALL W/001
 END PROP. SFB
 BEGIN SFB
 -RPC- STA. 21+36.15,
 OS=27.5' RT

-RPC- +54.00
 103.70' RT
 -RPC- +80.00
 115.28' RT
 -RPC- +25.00
 185.00' RT
 -RPC- +43.00
 207.00' RT

-RPC- +12.00
 186.00' RT
 -RPC- +35.00
 214.00' RT

-RPC- +45.00
 293.00' RT

-RPC- +39.00
 302.00' RT



INV=2024.03

GUEVARA M J AYALA &
 JORGE L H AYALA

LOW POINT
 22+43.5
 +70.00
 59' 48" RT
 BEG. FENCE

JANICE SORRELLS CREASMAN

JOHN W &
 SANDRA J HALSTEAD

PEGGY McCAIN SIMS (LE)
 & JOSHUA McCAIN SIMS

PEGGY M
 & JOSHUA

GEOTECHNICAL BORING REPORT

BORE LOG

WBS 34165.1.2		TIP 1-2513AA		COUNTY BUNCOMBE		GEOLOGIST Goodnight, D.J.										
SITE DESCRIPTION RETAINING WALL NO. W1001, FROM -RPC- STA. 18+13.15, 27.50' RT TO -RPC- STA. 21+36.15, 27.50' RT							GROUND WTR (ft)									
BORING NO. W1001_1		STATION 18+16		OFFSET 65 ft RT		ALIGNMENT -RPC-										
COLLAR ELEV. 2,087.3 ft		TOTAL DEPTH 29.2 ft		NORTHING 676,494		EASTING 924,576										
DRILL RIG/HAMMER EFF./DATE CG24113 CME-550X 74% 04/08/2022				DRILL METHOD H.S. Augers		HAMMER TYPE Automatic										
DRILLER Odom, C.		START DATE 10/10/22		COMP. DATE 10/10/22		SURFACE WATER DEPTH N/A										
ELEV (ft)	DRIVE ELEV (ft)	DEPTH (ft)	BLOW COUNT			BLOWS PER FOOT					SAMP. NO.	MOI	LOG	SOIL AND ROCK DESCRIPTION	DEPTH (ft)	
			0.5ft	0.5ft	0.5ft	0	25	50	75	100						
2090																
															2,087.3	0.0
2085	2,086.3	1.0	5	6	10								M			
	2,083.8	3.5	12	14	14								M			
	2,081.3	6.0	11	11	33								D			
2080	2,078.8	8.5	41	28	15								D			
	2,073.8	13.5	7	10	14								D			
2075	2,068.8	18.5	4	6	9								M			
	2,063.8	23.5	6	9	7								M			
2065	2,058.8	28.5	60	40/0.2												
2060															100/0.7	
															2,059.3	28.0
															2,058.1	29.2
															WEATHERED ROCK TAN AND WHITE, GNEISS Boring Terminated at Elevation 2,058.1 ft in WR: GNEISS	

WBS 34165.1.2		TIP 1-2513AA		COUNTY BUNCOMBE		GEOLOGIST Goodnight, D.J.										
SITE DESCRIPTION RETAINING WALL NO. W1001, FROM -RPC- STA. 18+13.15, 27.50' RT TO -RPC- STA. 21+36.15, 27.50' RT							GROUND WTR (ft)									
BORING NO. W1001_2		STATION 19+10		OFFSET 63 ft RT		ALIGNMENT -RPC-										
COLLAR ELEV. 2,094.8 ft		TOTAL DEPTH 38.5 ft		NORTHING 676,457		EASTING 924,662										
DRILL RIG/HAMMER EFF./DATE CG24113 CME-550X 74% 04/08/2022				DRILL METHOD H.S. Augers		HAMMER TYPE Automatic										
DRILLER Odom, C.		START DATE 10/07/22		COMP. DATE 10/07/22		SURFACE WATER DEPTH N/A										
ELEV (ft)	DRIVE ELEV (ft)	DEPTH (ft)	BLOW COUNT			BLOWS PER FOOT					SAMP. NO.	MOI	LOG	SOIL AND ROCK DESCRIPTION	DEPTH (ft)	
			0.5ft	0.5ft	0.5ft	0	25	50	75	100						
2095																
	2,093.8	1.0	6	8	9										2,094.8	0.0
	2,091.3	3.5	6	7	7											
2090	2,088.8	6.0	4	5	5											
	2,086.3	8.5	4	7	8											
2085	2,081.3	13.5	3	5	6											
	2,076.3	18.5	4	6	9											
2080	2,071.3	23.5	3	6	7											
	2,066.3	28.5	14	33	21											
2075	2,061.3	33.5	100/0.3													
2070																
	2,056.3	38.5	60/0.0												60/0.0	
															2,059.3	28.0
															2,058.1	29.2
															WEATHERED ROCK GRAY AND WHITE, GNEISS	
															Boring Terminated WITH STANDARD PENETRATION TEST REFUSAL at Elevation 2,056.3 ft on CR: GNEISS	
															2,094.8	0.0
															2,091.8	3.0
															2,089.3	5.5
															2,082.8	12.0
															2,072.8	22.0
															2,067.8	27.0
															2,063.8	31.0

NCDOT BORE DOUBLE I-1213AA_GEO.GPJ NC_DOT_GDT 9/8/23

GEOTECHNICAL BORING REPORT

BORE LOG

WBS 34165.1.2		TIP 1-2513AA		COUNTY BUNCOMBE		GEOLOGIST Goodnight, D.J.										
SITE DESCRIPTION RETAINING WALL NO. W1001, FROM -RPC- STA. 18+13.15, 27.50' RT TO -RPC- STA. 21+36.15, 27.50' RT							GROUND WTR (ft)									
BORING NO. W1001_2A		STATION 19+22		OFFSET 6 ft LT		ALIGNMENT -RPC-										
COLLAR ELEV. 2,061.8 ft		TOTAL DEPTH 2.0 ft		NORTHING 676,515		EASTING 924,701										
DRILL RIG/HAMMER EFF./DATE N/A		DRILL METHOD Hand Auger		HAMMER TYPE N/A												
DRILLER GOODNIGHT, D.		START DATE 10/28/22		COMP. DATE 10/28/22		SURFACE WATER DEPTH N/A										
ELEV (ft)	DRIVE ELEV (ft)	DEPTH (ft)	BLOW COUNT			BLOWS PER FOOT					SAMP. NO.	MOI	LOG	SOIL AND ROCK DESCRIPTION	DEPTH (ft)	
			0.5ft	0.5ft	0.5ft	0	25	50	75	100						
2065																
2060												M		GROUND SURFACE TOPSOIL RESIDUAL TAN, LOOSE TO MED. DENSE, SILTY SAND (A-2-4) WITH TRACE ROCK FRAGMENTS WEATHERED ROCK CR/BOULDER: GNEISS Boring Terminated WITH STANDARD PENETRATION TEST REFUSAL at Elevation 2,059.8 ft on CR/BOULDER: GNEISS	0.0 0.9 2.0	

WBS 34165.1.2		TIP 1-2513AA		COUNTY BUNCOMBE		GEOLOGIST Goodnight, D.J.										
SITE DESCRIPTION RETAINING WALL NO. W1001, FROM -RPC- STA. 18+13.15, 27.50' RT TO -RPC- STA. 21+36.15, 27.50' RT							GROUND WTR (ft)									
BORING NO. W1001_3		STATION 20+03		OFFSET 48 ft RT		ALIGNMENT -RPC-										
COLLAR ELEV. 2,089.4 ft		TOTAL DEPTH 36.7 ft		NORTHING 676,433		EASTING 924,754										
DRILL RIG/HAMMER EFF./DATE CG24113 CME-550X 74% 04/08/2022		DRILL METHOD H.S. Augers		HAMMER TYPE Automatic												
DRILLER Odom, C.		START DATE 10/07/22		COMP. DATE 10/07/22		SURFACE WATER DEPTH N/A										
ELEV (ft)	DRIVE ELEV (ft)	DEPTH (ft)	BLOW COUNT			BLOWS PER FOOT					SAMP. NO.	MOI	LOG	SOIL AND ROCK DESCRIPTION	DEPTH (ft)	
			0.5ft	0.5ft	0.5ft	0	25	50	75	100						
2090																
2085	2,088.4	1.0	11	11	10											
2080	2,085.9	3.5	6	9	8											
2075	2,083.4	6.0	6	5	8											
2070	2,080.9	8.5	4	6	8											
2065	2,075.9	13.5	6	7	6											
2060	2,070.9	18.5	10	11	12											
2055	2,065.9	23.5	4	6	7											
	2,060.9	28.5	4	5	8											
	2,055.9	33.5	12	18	60											
	2,052.7	36.7	60/0.0													

NCDOT BORE DOUBLE I-1213AA_GEO.GPJ NC_DOT_GDT 9/8/23

