

REFERENCE: I-2513AA

PROJECT: 34165.3.6

CONTENTS

<u>SHEET NO.</u>	<u>DESCRIPTION</u>
1	TITLE SHEET
2	LEGEND
3	SITE PLAN
4	PROFILE
5-7	CROSS SECTIONS
8-14	BORE LOGS

STATE OF NORTH CAROLINA
DEPARTMENT OF TRANSPORTATION
DIVISION OF HIGHWAYS
GEOTECHNICAL ENGINEERING UNIT

STRUCTURE
SUBSURFACE INVESTIGATION

COUNTY BUNCOMBE
 PROJECT DESCRIPTION BRIDGE NO. 902 ON -Y5RPA-
OVER BLUE RIDGE SOUTHERN RAILROAD

STATE	TOWN OF HOLLY SPRINGS PROJECT NO.	SHEET NO.	TOTAL SHEETS
N.C.	I-2513AA	1	14

CAUTION NOTICE

THE SUBSURFACE INFORMATION AND THE SUBSURFACE INVESTIGATION ON WHICH IT IS BASED WERE MADE FOR THE PURPOSE OF STUDY, PLANNING AND DESIGN, AND NOT FOR CONSTRUCTION OR PAY PURPOSES. THE VARIOUS FIELD BORING LOGS, ROCK CORES AND SOIL TEST DATA AVAILABLE MAY BE REVIEWED OR INSPECTED IN RALEIGH BY CONTACTING THE N. C. DEPARTMENT OF TRANSPORTATION, GEOTECHNICAL ENGINEERING UNIT AT (919) 707-6850. THE SUBSURFACE PLANS AND REPORTS, FIELD BORING LOGS, ROCK CORES AND SOIL TEST DATA ARE NOT PART OF THE CONTRACT.

GENERAL SOIL AND ROCK STRATA DESCRIPTIONS AND INDICATED BOUNDARIES ARE BASED ON A GEOTECHNICAL INTERPRETATION OF ALL AVAILABLE SUBSURFACE DATA AND MAY NOT NECESSARILY REFLECT THE ACTUAL SUBSURFACE CONDITIONS BETWEEN BORINGS OR BETWEEN SAMPLED STRATA WITHIN THE BOREHOLE. THE LABORATORY SAMPLE DATA AND THE IN SITU (IN-PLACE) TEST DATA CAN BE RELIED ON ONLY TO THE DEGREE OF RELIABILITY INHERENT IN THE STANDARD TEST METHOD. THE OBSERVED WATER LEVELS OR SOIL MOISTURE CONDITIONS INDICATED IN THE SUBSURFACE INVESTIGATIONS ARE AS RECORDED AT THE TIME OF THE INVESTIGATION. THESE WATER LEVELS OR SOIL MOISTURE CONDITIONS MAY VARY CONSIDERABLY WITH TIME ACCORDING TO CLIMATIC CONDITIONS INCLUDING TEMPERATURES, PRECIPITATION AND WIND, AS WELL AS OTHER NON-CLIMATIC FACTORS.

THE BIDDER OR CONTRACTOR IS CAUTIONED THAT DETAILS SHOWN ON THE SUBSURFACE PLANS ARE PRELIMINARY ONLY AND IN MANY CASES THE FINAL DESIGN DETAILS ARE DIFFERENT. FOR BIDDING AND CONSTRUCTION PURPOSES, REFER TO THE CONSTRUCTION PLANS AND DOCUMENTS FOR FINAL DESIGN INFORMATION ON THIS PROJECT. THE DEPARTMENT DOES NOT WARRANT OR GUARANTEE THE SUFFICIENCY OR ACCURACY OF THE INVESTIGATION MADE, NOR THE INTERPRETATIONS MADE, OR OPINION OF THE DEPARTMENT AS TO THE TYPE OF MATERIALS AND CONDITIONS TO BE ENCOUNTERED. THE BIDDER OR CONTRACTOR IS CAUTIONED TO MAKE SUCH INDEPENDENT SUBSURFACE INVESTIGATIONS AS HE DEEMS NECESSARY TO SATISFY HIMSELF AS TO CONDITIONS TO BE ENCOUNTERED ON THE PROJECT. THE CONTRACTOR SHALL HAVE NO CLAIM FOR ADDITIONAL COMPENSATION OR FOR AN EXTENSION OF TIME FOR ANY REASON RESULTING FROM THE ACTUAL CONDITIONS ENCOUNTERED AT THE SITE DIFFERING FROM THOSE INDICATED IN THE SUBSURFACE INFORMATION.

- NOTES:
1. THE INFORMATION CONTAINED HEREIN IS NOT IMPLIED OR GUARANTEED BY THE N. C. DEPARTMENT OF TRANSPORTATION AS ACCURATE NOR IS IT CONSIDERED PART OF THE PLANS, SPECIFICATIONS OR CONTRACT FOR THE PROJECT.
 2. BY HAVING REQUESTED THIS INFORMATION, THE CONTRACTOR SPECIFICALLY WAIVES ANY CLAIMS FOR INCREASED COMPENSATION OR EXTENSION OF TIME BASED ON DIFFERENCES BETWEEN THE CONDITIONS INDICATED HEREIN AND THE ACTUAL CONDITIONS AT THE PROJECT SITE.

PERSONNEL

CG2

GOODNIGHT, D.J.

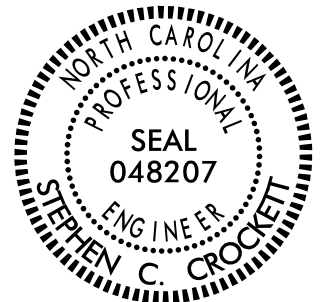
INVESTIGATED BY FALCON ENG.

DRAWN BY CROCKETT, S.C.

CHECKED BY HUNSBERGER, W.S.

SUBMITTED BY FALCON ENG.

DATE MARCH 2023



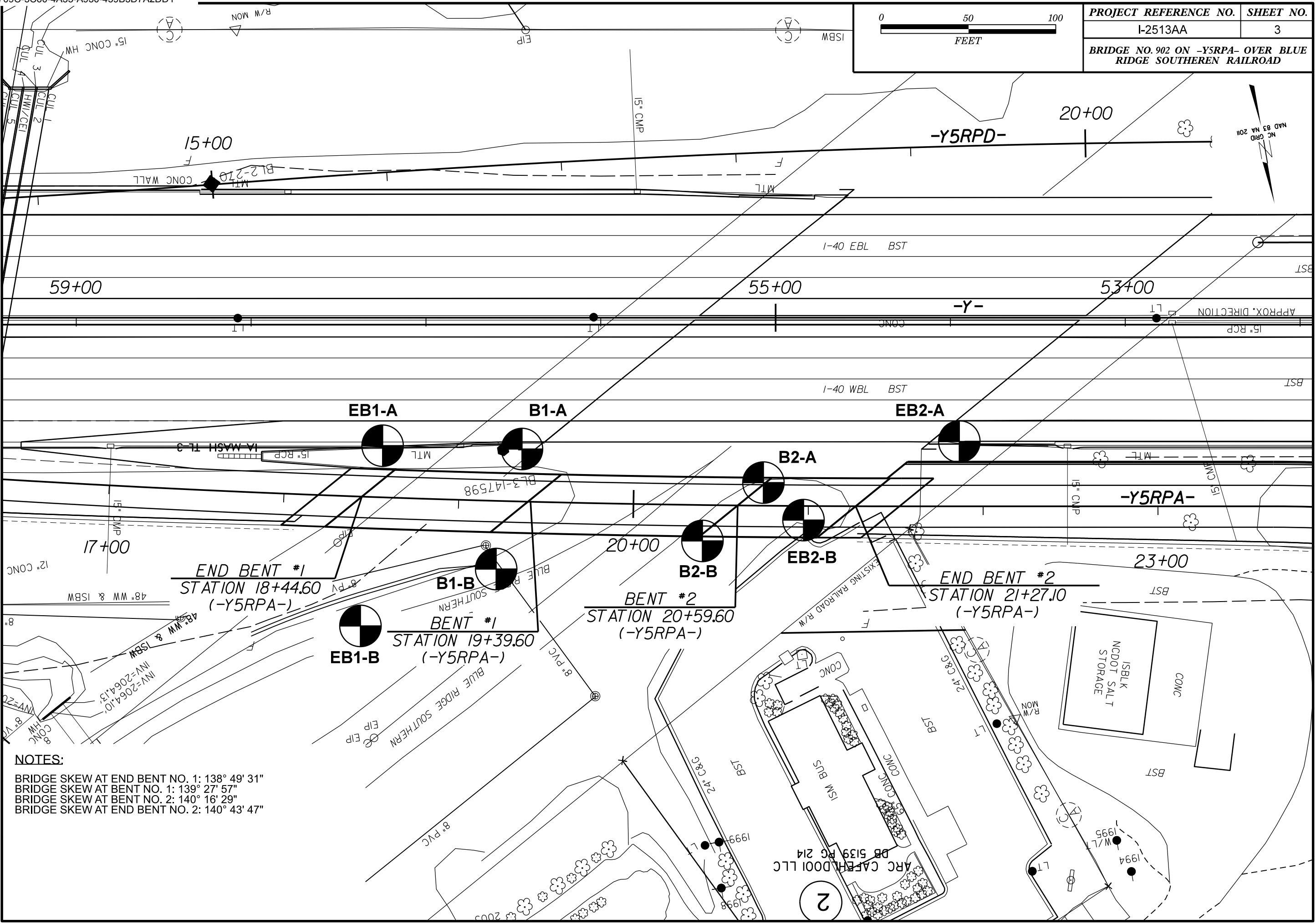
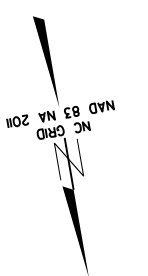
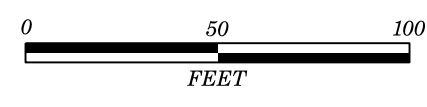
DocuSigned by:

Stephen Crockett 3/29/2023

C5CA5FED48E0435
SIGNATURE

DATE

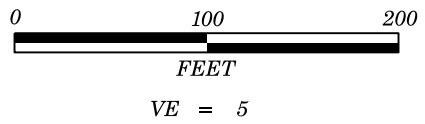
PROJECT REFERENCE NO.	SHEET NO.
I-2513AA	3
BRIDGE NO. 902 ON -Y5RPA- OVER BLUE RIDGE SOUTHERN RAILROAD	



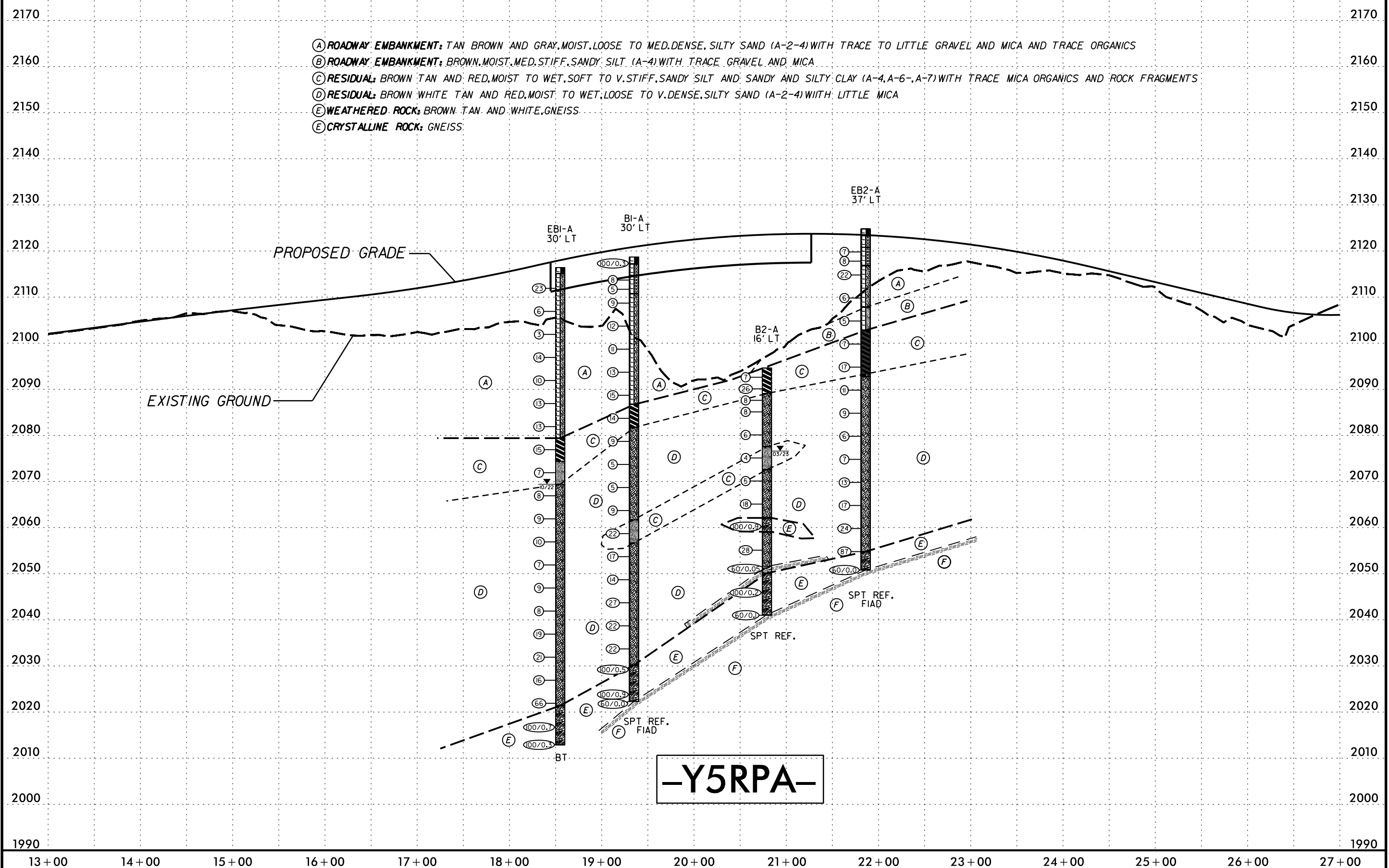
NOTES:

- BRIDGE SKEW AT END BENT NO. 1: 138° 49' 31"
- BRIDGE SKEW AT BENT NO. 1: 139° 27' 57"
- BRIDGE SKEW AT BENT NO. 2: 140° 16' 29"
- BRIDGE SKEW AT END BENT NO. 2: 140° 43' 47"

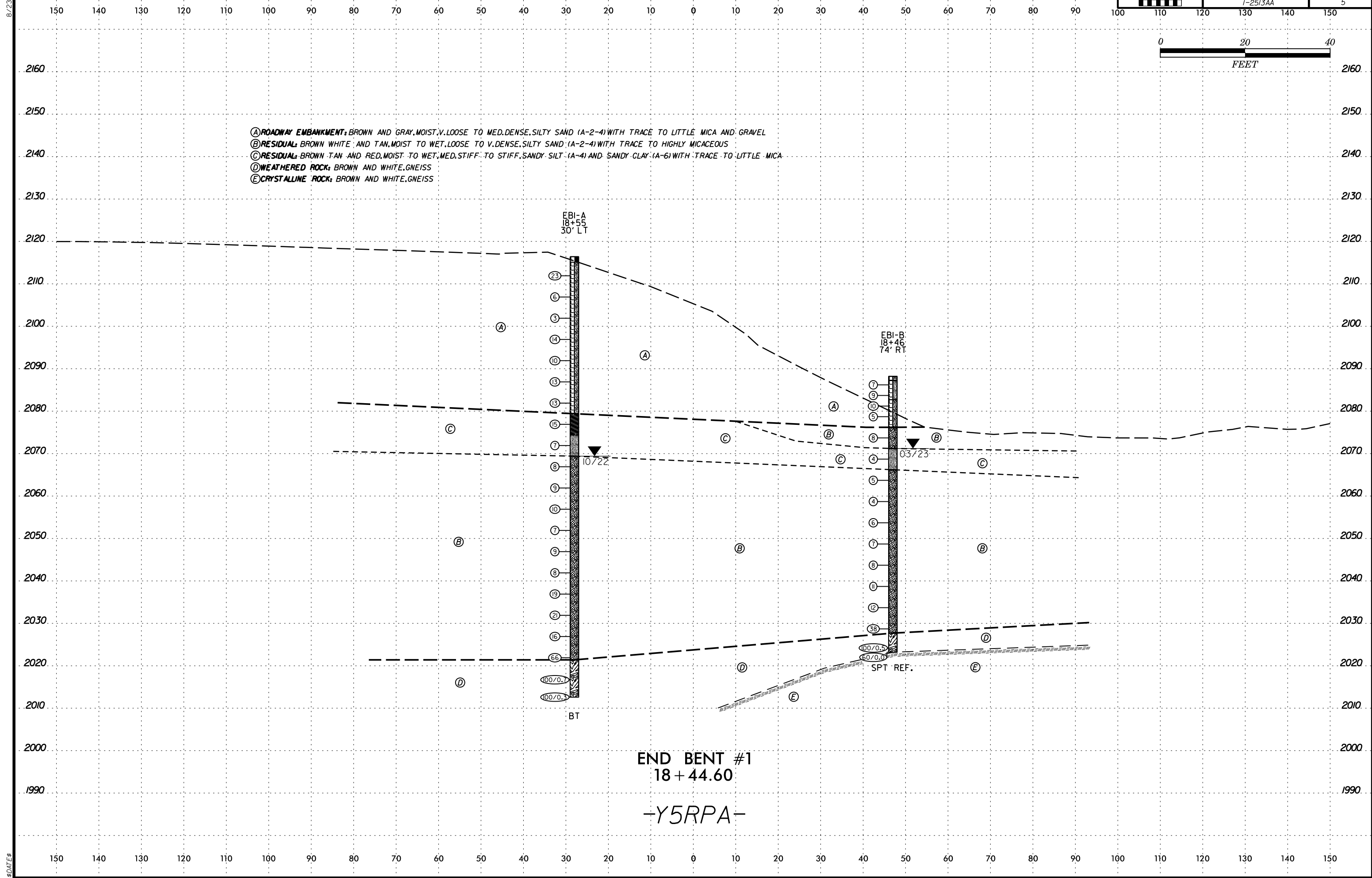
2

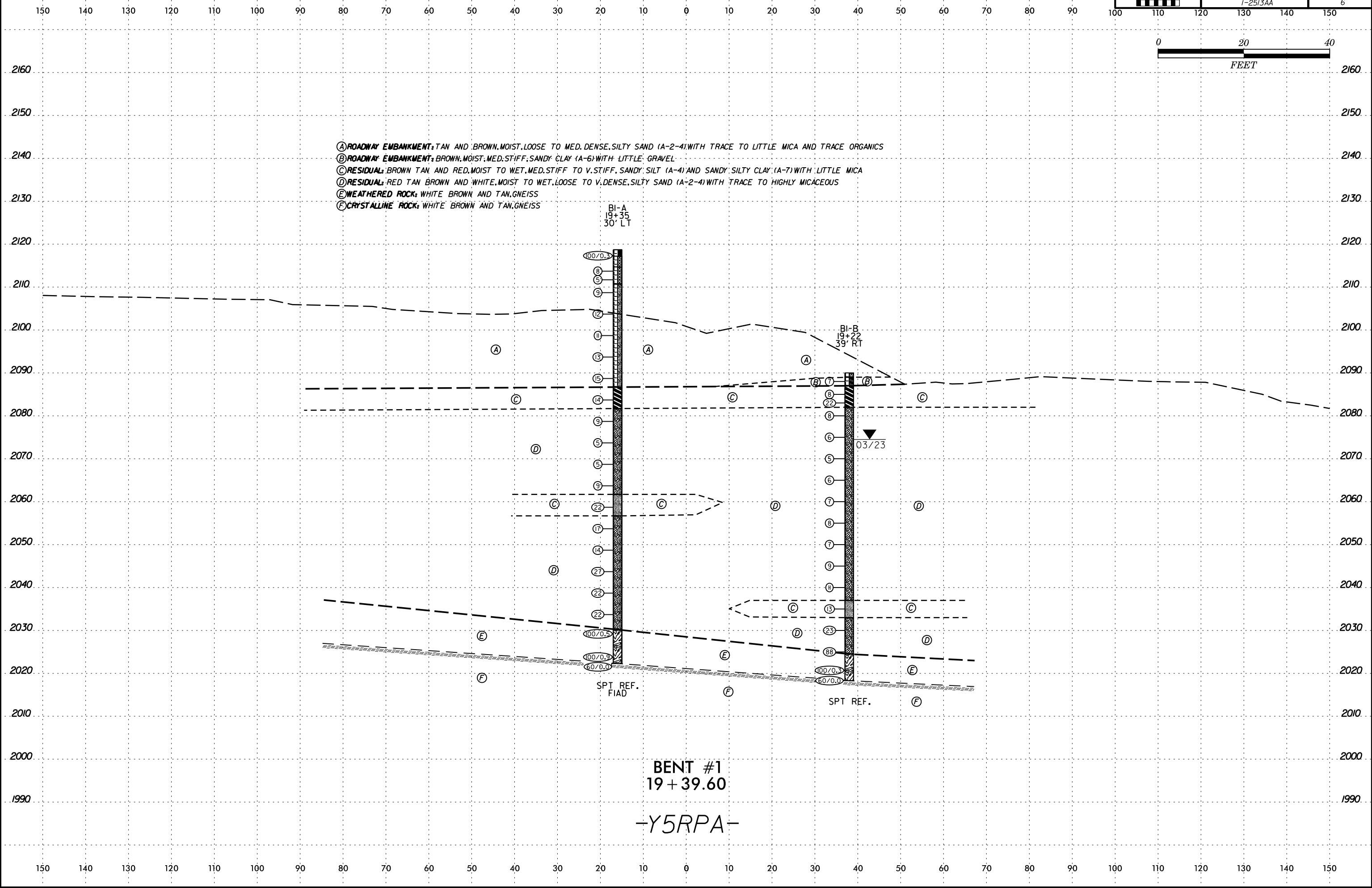
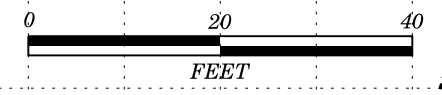


PROJECT REFERENCE NO.	SHEET NO.
I-2513AA	4
BRIDGE NO. 902 ON -Y5RPA- OVER BLUE RIDGE SOUTHEREN RAILROAD	



-Y5RPA-





- (A) ROADWAY EMBANKMENT: TAN AND BROWN, MOIST, LOOSE TO MED. DENSE, SILTY SAND (A-2-4) WITH TRACE TO LITTLE MICA AND TRACE ORGANICS
- (B) ROADWAY EMBANKMENT: BROWN, MOIST, MED. STIFF, SANDY CLAY (A-6) WITH LITTLE GRAVEL
- (C) RESIDUAL: BROWN TAN AND RED, MOIST TO WET, MED. STIFF TO V. STIFF, SANDY SILT (A-4) AND SANDY SILTY CLAY (A-7) WITH LITTLE MICA
- (D) RESIDUAL: RED TAN BROWN AND WHITE, MOIST TO WET, LOOSE TO V. DENSE, SILTY SAND (A-2-4) WITH TRACE TO HIGHLY MICACEOUS
- (E) WEATHERED ROCK: WHITE BROWN AND TAN, GNEISS
- (F) CRYSTALLINE ROCK: WHITE BROWN AND TAN, GNEISS

BI-A
19+35
30' LT

BI-B
19+22
39' RT

03/23

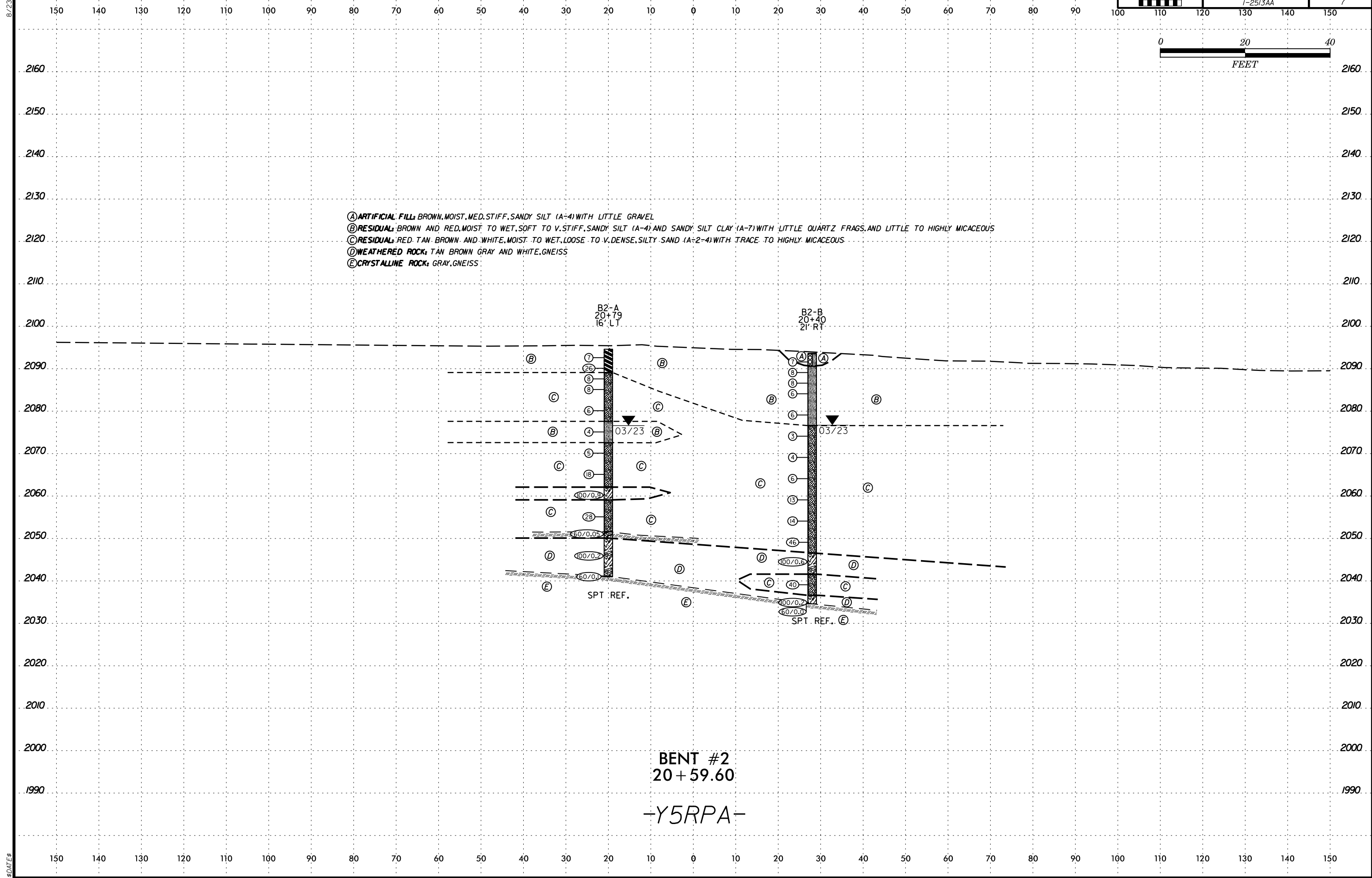
SPT REF.
FIAD

SPT REF.

BENT #1
19+39.60
-Y5RPA-

8/23/9

8/23/9



- (A) ARTIFICIAL FILL: BROWN, MOIST, MED. STIFF, SANDY SILT (A-4) WITH LITTLE GRAVEL
- (B) RESIDUAL: BROWN AND RED, MOIST TO WET, SOFT TO V. STIFF, SANDY SILT (A-4) AND SANDY SILT CLAY (A-7) WITH LITTLE QUARTZ FRAGS. AND LITTLE TO HIGHLY MICACEOUS
- (C) RESIDUAL: RED, TAN, BROWN AND WHITE, MOIST TO WET, LOOSE TO V. DENSE, SILTY SAND (A-2-4) WITH TRACE TO HIGHLY MICACEOUS
- (D) WEATHERED ROCK: TAN BROWN GRAY AND WHITE, GNEISS
- (E) CRYSTALLINE ROCK: GRAY, GNEISS

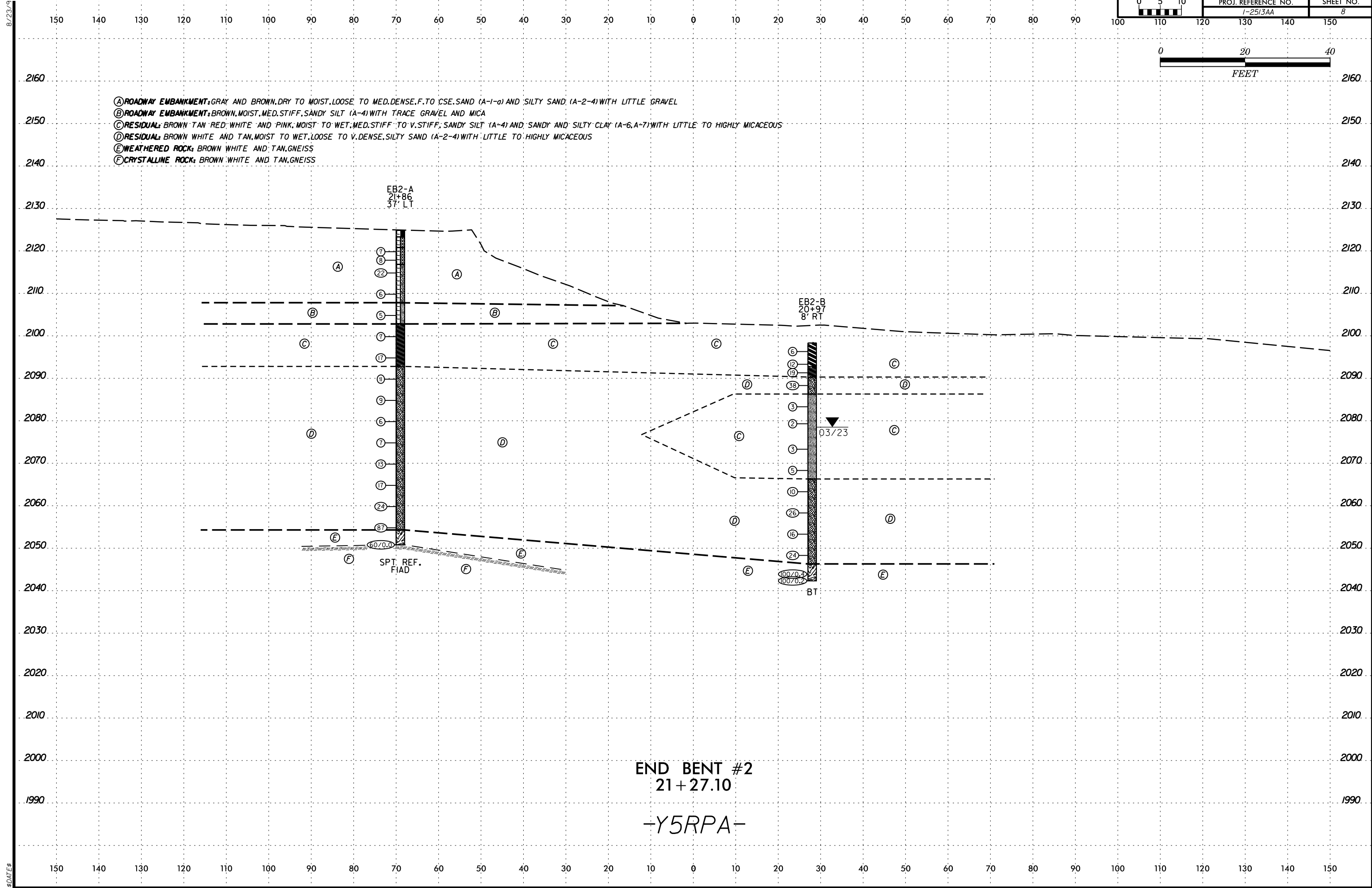
B2-A
20+79
16' LT

B2-B
20+40
21' RT

BENT #2
20+59.60
-Y5RPA-

8/23/9

8/23/9



GEOTECHNICAL BORING REPORT

BORE LOG

GEOTECHNICAL BORING REPORT

BORE LOG

WBS 34165.1.2		TIP 1-2513AA		COUNTY BUNCOMBE		GEOLOGIST Goodnight, D.J.										
SITE DESCRIPTION BRIDGE ON -Y5RPA- OVER BLUE RIDGE SOUTHERN RAILROAD BETWEEN I-26 AND ALT. US-74							GROUND WTR (ft)									
BORING NO. EB1-A		STATION 18+55		OFFSET 30 ft LT		ALIGNMENT -Y5RPA-										
		0 HR. 50.0														
COLLAR ELEV. 2,116.4 ft		TOTAL DEPTH 103.8 ft		NORTHING 678,192		EASTING 919,187										
		24 HR. 47.0														
DRILL RIG/HAMMER EFF./DATE CG20446 Diedrich D50 87% 05/10/2022				DRILL METHOD H.S. Augers		HAMMER TYPE Automatic										
DRILLER Odom, C.		START DATE 10/18/22		COMP. DATE 10/19/22		SURFACE WATER DEPTH N/A										
ELEV (ft)	DRIVE ELEV (ft)	DEPTH (ft)	BLOW COUNT			BLOWS PER FOOT					SAMP. NO.	MOI	LOG	SOIL AND ROCK DESCRIPTION	DEPTH (ft)	
			0.5ft	0.5ft	0.5ft	0	25	50	75	100						
2120																
															2,116.4	GROUND SURFACE 0.0
															2,115.1	ASPHALT PAVEMENT 1.3
	2,112.9	3.5		10	12	11							M			ROADWAY EMBANKMENT
																BROWN AND GRAY, V. LOOSE TO MED. DENSE, SILTY SAND (A-2-4) WITH TRACE GRAVEL AND TRACE TO LITTLE MICA
	2,107.9	8.5		3	4	2							M			
	2,102.9	13.5		2	1	2							M			
	2,097.9	18.5		6	7	7							M			
	2,092.9	23.5		3	5	5							M			
	2,087.9	28.5		4	6	7							M			
	2,082.9	33.5		4	6	7							M			
	2,077.9	38.5		3	6	9							M			
	2,072.9	43.5		2	3	4							M			
	2,067.9	48.5		3	3	5							M			
	2,062.9	53.5		2	3	6							W			
	2,057.9	58.5		3	4	6							W			
	2,052.9	63.5		2	3	4							W			
	2,047.9	68.5		2	3	6							W			
	2,042.9	73.5		2	4	4							W			

NCDOT BORE SINGLE I-213AA_GEO.GPJ_NC_DOT.GDT 3/28/23

WBS 34165.1.2		TIP 1-2513AA		COUNTY BUNCOMBE		GEOLOGIST Goodnight, D.J.										
SITE DESCRIPTION BRIDGE ON -Y5RPA- OVER BLUE RIDGE SOUTHERN RAILROAD BETWEEN I-26 AND ALT. US-74							GROUND WTR (ft)									
BORING NO. EB1-A		STATION 18+55		OFFSET 30 ft LT		ALIGNMENT -Y5RPA-										
		0 HR. 50.0														
COLLAR ELEV. 2,116.4 ft		TOTAL DEPTH 103.8 ft		NORTHING 678,192		EASTING 919,187										
		24 HR. 47.0														
DRILL RIG/HAMMER EFF./DATE CG20446 Diedrich D50 87% 05/10/2022				DRILL METHOD H.S. Augers		HAMMER TYPE Automatic										
DRILLER Odom, C.		START DATE 10/18/22		COMP. DATE 10/19/22		SURFACE WATER DEPTH N/A										
ELEV (ft)	DRIVE ELEV (ft)	DEPTH (ft)	BLOW COUNT			BLOWS PER FOOT					SAMP. NO.	MOI	LOG	SOIL AND ROCK DESCRIPTION	DEPTH (ft)	
			0.5ft	0.5ft	0.5ft	0	25	50	75	100						
2040																
	2,037.9	78.5		4	8	11							M			
	2,032.9	83.5		5	8	13							M			
	2,027.9	88.5		4	6	10							M			
	2,022.9	93.5		20	28	38							M			
	2,017.9	98.5		16	50	50/0.2							M			
	2,012.9	103.5		100/0.3									M			
															2,021.4	WEATHERED ROCK 95.0
															2,012.6	Boring Terminated at Elevation 2,012.6 ft in WR: GNEISS 103.8

NCDOT BORE SINGLE I-213AA_GEO.GPJ_NC_DOT.GDT 3/28/23

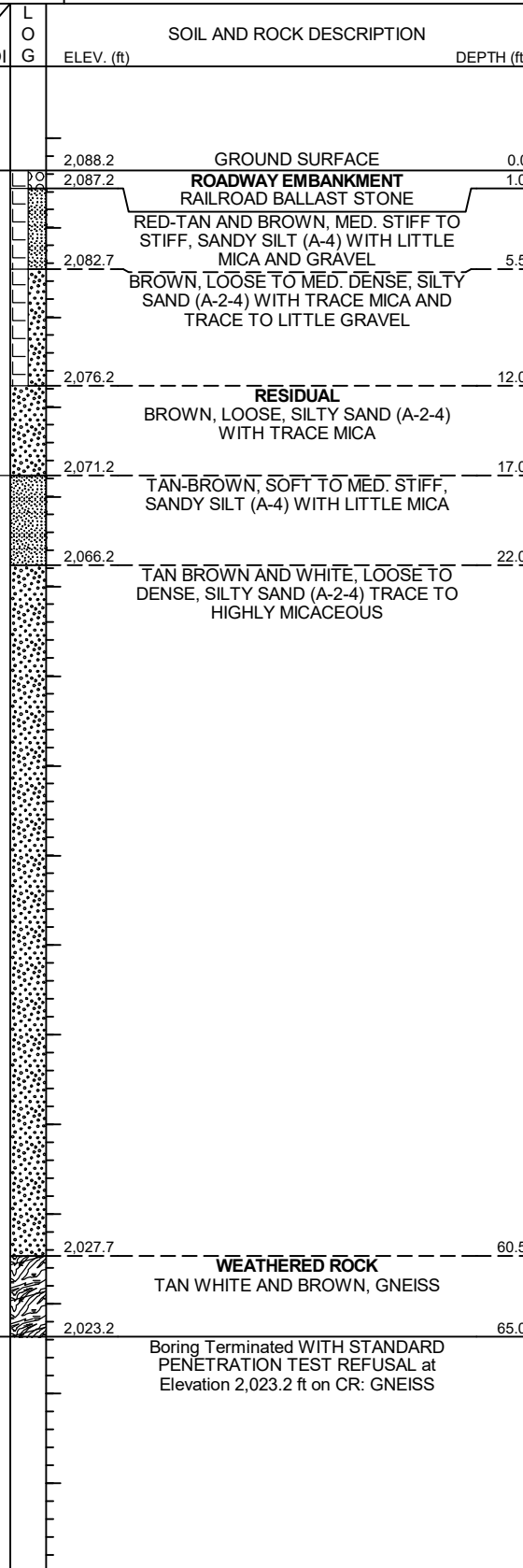
GEOTECHNICAL BORING REPORT

BORE LOG

WBS 34165.1.2	TIP 1-2513AA	COUNTY BUNCOMBE	GEOLOGIST Goodnight, D.J.
SITE DESCRIPTION BRIDGE ON -Y5RPA- OVER BLUE RIDGE SOUTHERN RAILROAD BETWEEN I-26 AND ALT. US-74			GROUND WTR (ft)
BORING NO. EB1-B	STATION 18+46	OFFSET 74 ft RT	ALIGNMENT -Y5RPA-
COLLAR ELEV. 2,088.2 ft	TOTAL DEPTH 65.0 ft	NORTHING 678,291	EASTING 919,217
DRILL RIG/HAMMER EFF./DATE CG20446 Diedrich D50 87% 05/10/2022		DRILL METHOD H.S. Augers	HAMMER TYPE Automatic
DRILLER Odom, C.	START DATE 03/06/23	COMP. DATE 03/06/23	SURFACE WATER DEPTH N/A

ELEV (ft)	DRIVE ELEV (ft)	DEPTH (ft)	BLOW COUNT			BLOWS PER FOOT					SAMP. NO.	LOG	SOIL AND ROCK DESCRIPTION	DEPTH (ft)	
			0.5ft	0.5ft	0.5ft	0	25	50	75	100					
2090															
	2,087.2	1.0	3	3	4									2,088.2	0.0
														2,087.2	1.0
2085	2,084.7	3.5	3	5	4										
	2,082.2	6.0	3	5	5									2,082.7	5.5
2080	2,079.7	8.5	1	2	3										
	2,076.2	12.0												2,076.2	12.0
2075	2,074.7	13.5	4	3	5										
	2,071.2	17.0												2,071.2	17.0
2070	2,069.7	18.5	1	2	2										
	2,066.2	22.0												2,066.2	22.0
2065	2,064.7	23.5	2	2	3										
	2,059.7	28.5	1	2	2										
2060	2,059.7	28.5	1	2	2										
	2,054.7	33.5	1	2	4										
2055	2,054.7	33.5	1	2	4										
	2,049.7	38.5	2	2	5										
2050	2,049.7	38.5	2	2	5										
	2,044.7	43.5	2	3	5										
2045	2,044.7	43.5	2	3	5										
	2,039.7	48.5	2	4	7										
2040	2,039.7	48.5	2	4	7										
	2,034.7	53.5	3	5	7										
2035	2,034.7	53.5	3	5	7										
	2,029.7	58.5	10	19	19										
2030	2,029.7	58.5	10	19	19										
	2,027.7	60.5												2,027.7	60.5
2025	2,024.7	63.5													
	2,023.2	65.0	100/0.5											2,023.2	65.0
		60/0.0													

NCDOT BORE DOUBLE I-1213AA_GEO.GPJ NC_DOT.GDT 3/28/23



GEOTECHNICAL BORING REPORT

BORE LOG

WBS 34165.1.2	TIP 1-2513AA	COUNTY BUNCOMBE	GEOLOGIST Goodnight, D.J.
SITE DESCRIPTION BRIDGE ON -Y5RPA- OVER BLUE RIDGE SOUTHERN RAILROAD BETWEEN I-26 AND ALT. US-74			GROUND WTR (ft)
BORING NO. B1-B	STATION 19+22	OFFSET 39 ft RT	ALIGNMENT -Y5RPA-
COLLAR ELEV. 2,090.0 ft	TOTAL DEPTH 71.7 ft	NORTHING 678,272	EASTING 919,135
DRILL RIG/HAMMER EFF./DATE CG20446 Diedrich D50 87% 05/10/2022		DRILL METHOD H.S. Augers	HAMMER TYPE Automatic
DRILLER Odom, C.	START DATE 03/06/23	COMP. DATE 03/06/23	SURFACE WATER DEPTH N/A

ELEV (ft)	DRIVE ELEV (ft)	DEPTH (ft)	BLOW COUNT			BLOWS PER FOOT					SAMP. NO.	LOG	SOIL AND ROCK DESCRIPTION	
			0.5ft	0.5ft	0.5ft	0	25	50	75	100				ELEV. (ft)
2090														2,090.0 GROUND SURFACE 0.0
	2,089.0	1.0	2	3	4									2,089.0 ROADWAY EMBANKMENT 1.0
	2,087.0	3.0												2,087.0 RAILROAD BALLAST STONE 3.0
2085	2,086.0	4.0	2	3	5									2,087.0 BROWN, MED. STIFF, SANDY CLAY (A-6) WITH LITTLE GRAVEL 3.9
	2,084.0	6.0	4	9	13									RESIDUAL
	2,082.0	8.0												2,082.0 RED-BROWN, MED. STIFF TO STIFF, SANDY SILTY CLAY (A-7) 8.0
2080	2,081.0	9.0	4	4	4									RED BROWN TAN AND WHITE, LOOSE TO MED. DENSE, SILTY SAND (A-2-4) TRACE TO HIGHLY MICACEOUS
	2,076.0	14.0	2	3	3									
2075	2,071.0	19.0	2	2	3									
	2,066.0	24.0	2	3	3									
2065	2,061.0	29.0	2	2	5									
2060	2,056.0	34.0	2	3	5									
2055	2,051.0	39.0	2	2	5									
2050	2,046.0	44.0	2	3	6									
2045	2,041.0	49.0	3	4	7									
2040	2,036.0	54.0	5	5	8									2,037.0 TAN, STIFF, SANDY SILT (A-4) 53.0
2035	2,031.0	59.0	6	10	13									2,033.0 TAN BROWN AND WHITE, MED. DENSE TO V. DENSE, SILTY SAND (A-2-4) LITTLE TO HIGHLY MICACEOUS 57.0
2030	2,026.0	64.0	10	30	58									
2025	2,021.0	69.0	100/0.3											2,024.5 WEATHERED ROCK WHITE AND TAN, GNEISS 65.5
2020	2,018.3	71.7	60/0.0											2,018.3 Boring Terminated WITH STANDARD PENETRATION TEST REFUSAL at Elevation 2,018.3 ft on CR: GNEISS 71.7

NCDOT BORE DOUBLE I-1213AA_GEO.GPJ NC_DOT.GDT 3/28/23

GEOTECHNICAL BORING REPORT BORE LOG

WBS 34165.1.2		TIP 1-2513AA		COUNTY BUNCOMBE		GEOLOGIST Goodnight, D.J.											
SITE DESCRIPTION BRIDGE ON -Y5RPA- OVER BLUE RIDGE SOUTHERN RAILROAD BETWEEN I-26 AND ALT. US-74							GROUND WTR (ft)										
BORING NO. B2-A		STATION 20+79		OFFSET 16 ft LT		ALIGNMENT -Y5RPA-											
COLLAR ELEV. 2,094.6 ft		TOTAL DEPTH 53.6 ft		NORTHING 678,249		EASTING 918,976											
DRILL RIG/HAMMER EFF./DATE CG20446 Diedrich D50 87% 05/10/2022		DRILL METHOD H.S. Augers		HAMMER TYPE Automatic													
DRILLER Odom, C.		START DATE 02/28/23		COMP. DATE 02/28/23		SURFACE WATER DEPTH N/A											
ELEV (ft)	DRIVE ELEV (ft)	DEPTH (ft)	BLOW COUNT			BLOWS PER FOOT					SAMP. NO.	MOI	LOG	SOIL AND ROCK DESCRIPTION			
			0.5ft	0.5ft	0.5ft	0	25	50	75	100				ELEV. (ft)	DEPTH (ft)		
2095															2,094.6	GROUND SURFACE	0.0
	2,093.6	1.0	2	2	5									M	RESIDUAL		
	2,091.1	3.5	6	11	15									M	RED-BROWN, MED. STIFF TO V. STIFF, SANDY SILTY CLAY (A-7) WITH LITTLE QUARTZ FRAGMENTS		
2090	2,088.6	6.0	2	4	4									M	RED-TAN AND BROWN, LOOSE, SILTY SAND (A-2-4) WITH LITTLE MICA	5.5	
	2,086.1	8.5	2	3	5									M			
2085	2,081.1	13.5	2	2	4									M			
2080	2,076.1	18.5	2	1	3									W	BROWN, SOFT TO MED. STIFF, SANDY SILT (A-4) HIGHLY MICACEOUS	17.0	
2075	2,071.1	23.5	2	2	3									W	TAN AND BROWN, LOOSE TO MED. DENSE, SILTY SAND (A-2-4)	22.0	
2070	2,066.1	28.5	4	6	12									W			
2065	2,061.1	33.5	33	67/0.4										W	WEATHERED ROCK TAN AND BROWN, GNEISS	32.5	
2060	2,056.1	38.5	6	12	16									W	RESIDUAL BROWN, MED. DENSE, SILTY SAND (A-2-4) WITH LITTLE MICA	35.5	
2055	2,051.1	43.5	60/0.05											W	CRYSTALLINE ROCK TAN AND BROWN, GNEISS	43.0	
2050	2,046.1	48.5	100/0.2											W	WEATHERED ROCK GRAN AND TAN, GNEISS	44.5	
2045	2,041.1	53.5	60/0.1											W	CRYSTALLINE ROCK GRAY, GNEISS	53.5	
															Boring Terminated WITH STANDARD PENETRATION TEST REFUSAL at Elevation 2,041.0 ft in CR: GNEISS		

NCDOT BORE SINGLE I-213AA_GEO.GPJ_NC_DOT.GDT 3/28/23

GEOTECHNICAL BORING REPORT BORE LOG

WBS 34165.1.2		TIP 1-2513AA		COUNTY BUNCOMBE		GEOLOGIST Goodnight, D.J.											
SITE DESCRIPTION BRIDGE ON -Y5RPA- OVER BLUE RIDGE SOUTHERN RAILROAD BETWEEN I-26 AND ALT. US-74							GROUND WTR (ft)										
BORING NO. B2-B		STATION 20+40		OFFSET 21 ft RT		ALIGNMENT -Y5RPA-											
COLLAR ELEV. 2,093.6 ft		TOTAL DEPTH 59.0 ft		NORTHING 678,276		EASTING 919,016											
DRILL RIG/HAMMER EFF./DATE CG20446 Diedrich D50 87% 05/10/2022		DRILL METHOD H.S. Augers		HAMMER TYPE Automatic													
DRILLER Odom, C.		START DATE 02/28/23		COMP. DATE 02/28/23		SURFACE WATER DEPTH N/A											
ELEV (ft)	DRIVE ELEV (ft)	DEPTH (ft)	BLOW COUNT			BLOWS PER FOOT					SAMP. NO.	MOI	LOG	SOIL AND ROCK DESCRIPTION			
			0.5ft	0.5ft	0.5ft	0	25	50	75	100				ELEV. (ft)	DEPTH (ft)		
2095															2,093.6	GROUND SURFACE	0.0
	2,092.6	1.0	3	4	3									M	ARTIFICIAL FILL		
	2,090.1	3.5	2	3	5									M	BROWN, MED. STIFF, SANDY SILT (A-4) WITH LITTLE GRAVEL	3.0	
2090	2,087.6	6.0	3	3	5									M	RESIDUAL		
	2,085.1	8.5	2	3	3									M	BROWN, MED. STIFF, SANDY SILT (A-4) LITTLE TO HIGHLY MICACEOUS		
2085	2,080.1	13.5	2	3	3									M			
2080	2,075.1	18.5	1	1	2									W	TAN WHITE AND BROWN, V. LOOSE TO DENSE, SILTY SAND (A-2-4) LITTLE TO HIGHLY MICACEOUS	17.0	
2075	2,070.1	23.5	1	2	2									W			
2070	2,065.1	28.5	2	2	4									W			
2065	2,060.1	33.5	2	5	8									W			
2060	2,055.1	38.5	5	6	8									W			
2055	2,050.1	43.5	11	20	26									W			
2050	2,046.6	47.0	65	35/0.1										W	WEATHERED ROCK TAN AND WHITE, GNEISS	47.0	
2045	2,041.6	52.0												W	RESIDUAL		
	2,036.6	57.0												M	TAN AND WHITE, DENSE, SILTY SAND (A-2-4) WITH LITTLE MICA	52.0	
2040	2,034.6	59.0	100/0.2											W	WEATHERED ROCK TAN AND WHITE, GNEISS	57.0	
2035															Boring Terminated WITH STANDARD PENETRATION TEST REFUSAL at Elevation 2,034.6 ft on CR: GNEISS		

NCDOT BORE SINGLE I-213AA_GEO.GPJ_NC_DOT.GDT 3/28/23

