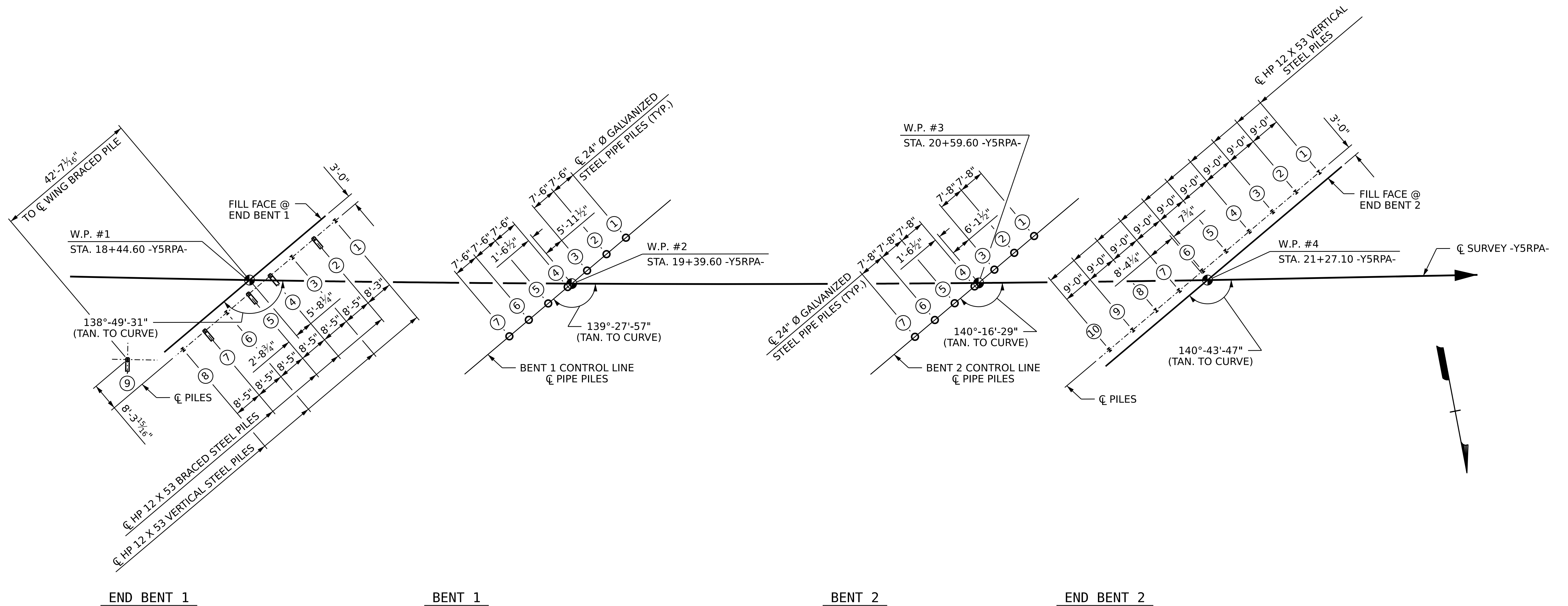


2/6/2024 1:05:07 PM c:\pwworking\cecom\_ds21\_na\_2020\d0252774\I2513AA\_SMU\_FL\_100902.dgn



### FOUNDATION LAYOUT

**NOTES:**

- OBSERVE A 3 MONTH WAITING PERIOD AFTER CONSTRUCTING THE MECHANICALLY STABILIZED EARTH (MSE) ABUTMENT WALL TO WITHIN 1 FT OF THE BOTTOM OF CAP ELEVATION BEFORE BEGINNING END BENT CONSTRUCTION AT END BENT 2. FOR BRIDGE WAITING PERIODS, SEE ROADWAY PLANS AND SECTION 235 OF THE STANDARD SPECIFICATIONS.
- SEE ROADWAY PLANS AND SECTION 235 OF THE STANDARD SPECIFICATIONS FOR THE SETTLEMENT GAUGES REQUIRED AT END BENT 2.
- FOR PILES, SEE SECTION 450 OF THE STANDARD SPECIFICATIONS.
- IT HAS BEEN ESTIMATED THAT A HAMMER WITH AN EQUIVALENT RATED ENERGY IN THE RANGE OF 55,000 TO 85,000 FT-LBS PER BLOW WILL BE REQUIRED TO DRIVE PILES AT BENTS 1 AND 2. THIS ESTIMATED ENERGY RANGE DOES NOT RELEASE THE CONTRACTOR FROM PROVIDING DRIVING EQUIPMENT IN ACCORDANCE WITH SUBARTICLE 450-3(D)(2) OF THE STANDARD SPECIFICATIONS.
- CONSTRUCT MSE WALL PRIOR TO INSTALLING PILES END BENT 2. INSTALL PILE SLEEVES AT ALL PILE LOCATIONS. THE CONTRACTOR SHOULD PARTIALLY DRIVE THE PILES FOR END BENT 2 TO A DEPTH OF 20 FEET BELOW THE TOP OF THE MSE WALL LEVELING PAD. AFTER SETTLEMENT MONITORING OF THE EMBANKMENT IS COMPLETE, DRIVE THE PILES TO THEIR REQUIRED DRIVING RESISTANCE.
- INSTALL 2 SETTLEMENT GAUGES BEFORE CONSTRUCTING THE EMBANKMENT TO FINISHED GRADE AT END BENT 2. THE ENGINEER MAY RELEASE PILE DRIVING AFTER THE SETTLEMENT RATE IS LESS THAN 1/10" PER 4 WEEK PERIOD. THE MONITORING PERIOD IS ESTIMATED TO BE 3 MONTHS.

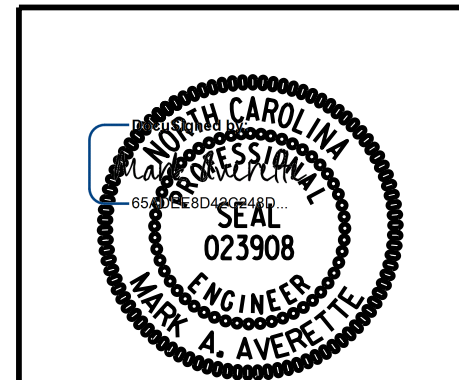
PROJECT NO. I-2513AA/AB  
BUNCOMBE COUNTY  
 STATION: 20+16.70 -Y5RPA-

SHEET 2 OF 6

STATE OF NORTH CAROLINA  
 DEPARTMENT OF TRANSPORTATION  
 RALEIGH

**GENERAL DRAWING**

FOR BRIDGE ON I-40 RAMP OVER  
 BLUE RIDGE SOUTHERN RAILROAD  
 BETWEEN I-26 AND ALT. US 74



DRAWN BY :	S.D. COOPER	DATE :	12-23
CHECKED BY :	M.A. AVERETTE	DATE :	12-23
DESIGN ENGINEER OF RECORD:	M.A. AVERETTE	DATE :	12-23

REVISIONS				SHEET NO.	
NO.	BY:	DATE:	NO.	BY:	DATE:
1			3		
2			4		

**DOCUMENT NOT CONSIDERED FINAL  
 UNLESS ALL SIGNATURES COMPLETED**