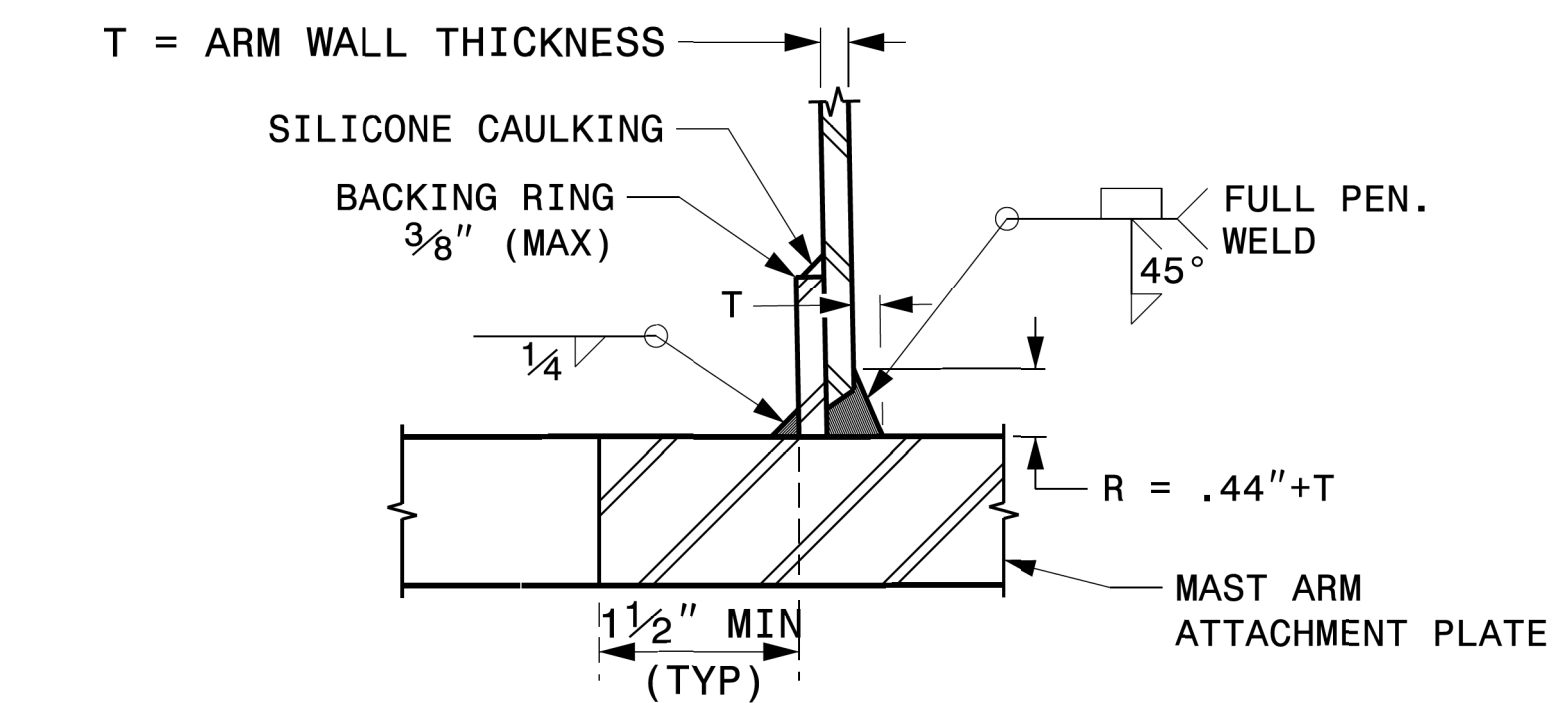
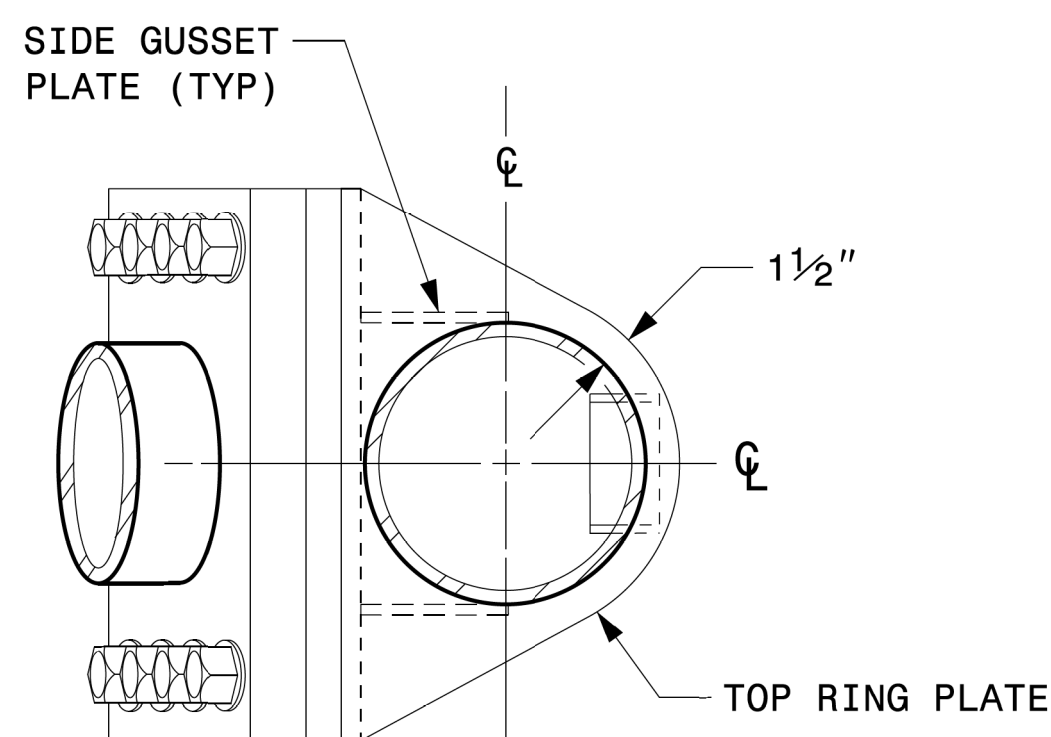


# WELDED RING STIFFENED MAST ARM CONNECTION

PROJECT I.D. NO.	SHEET NO.
I-2513 AA/AB	Sig.M5



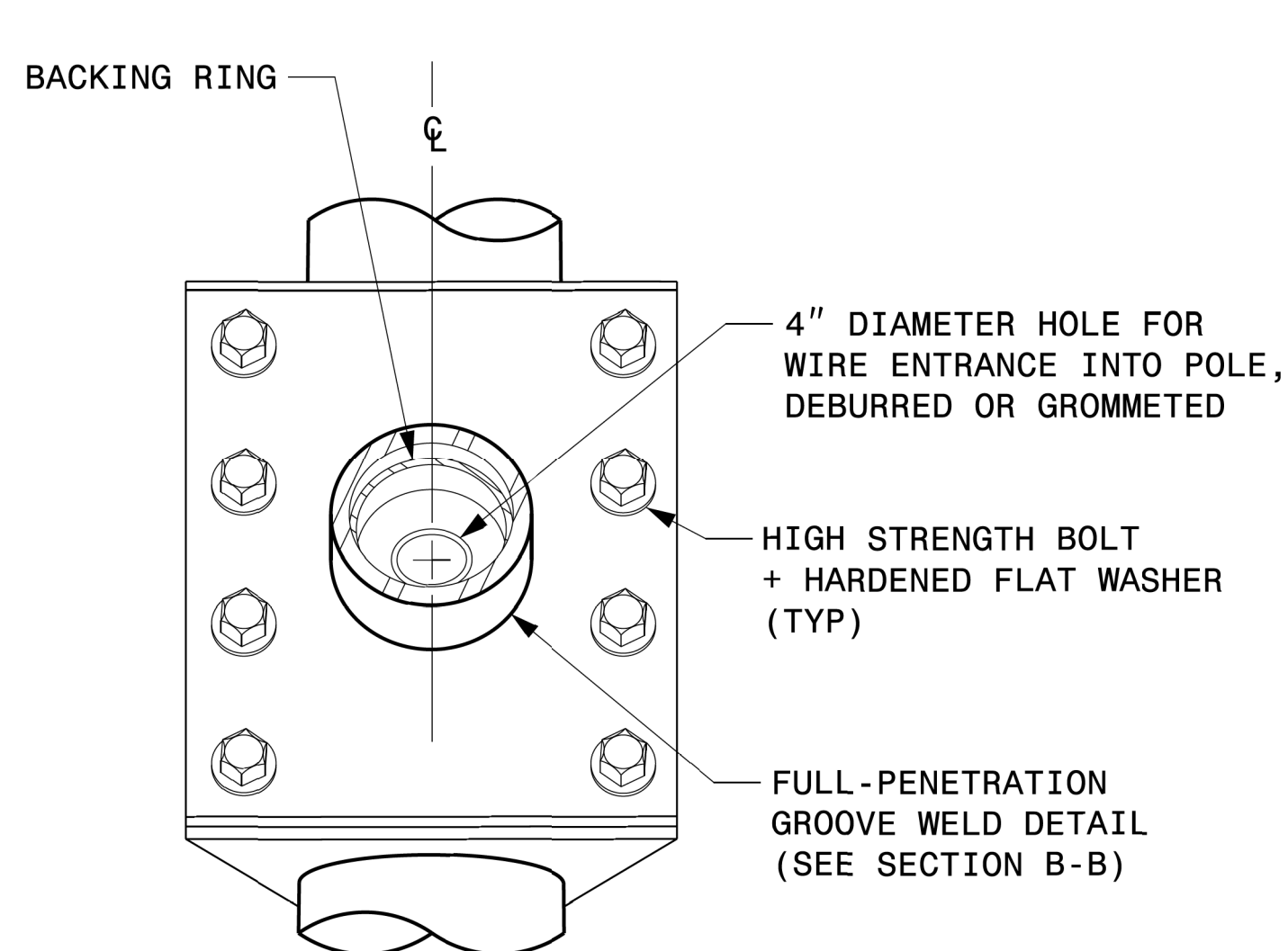
**SECTION B-B**  
**FULL-PENETRATION GROOVE WELD DETAIL**



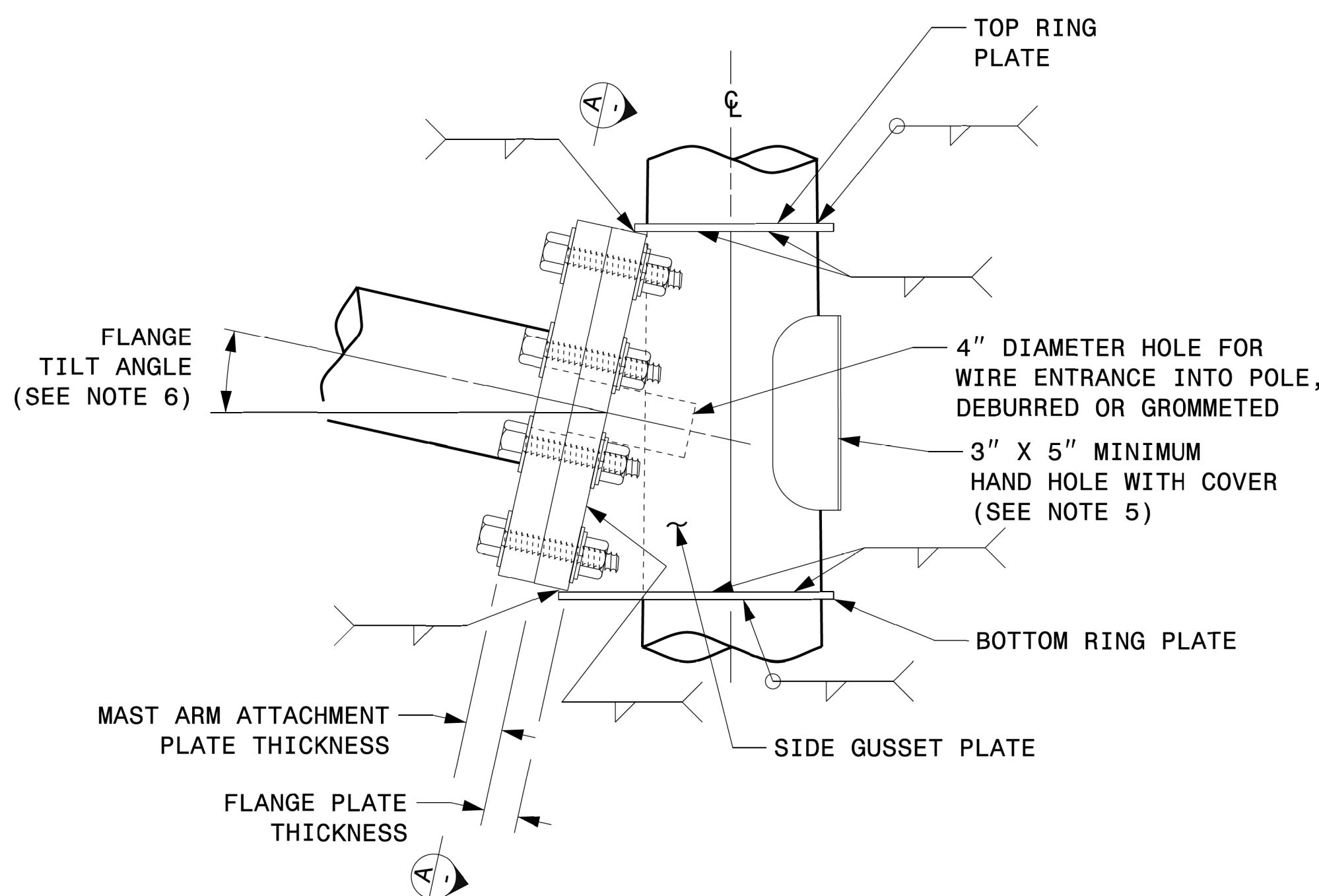
**PLAN VIEW**

**NOTES:**

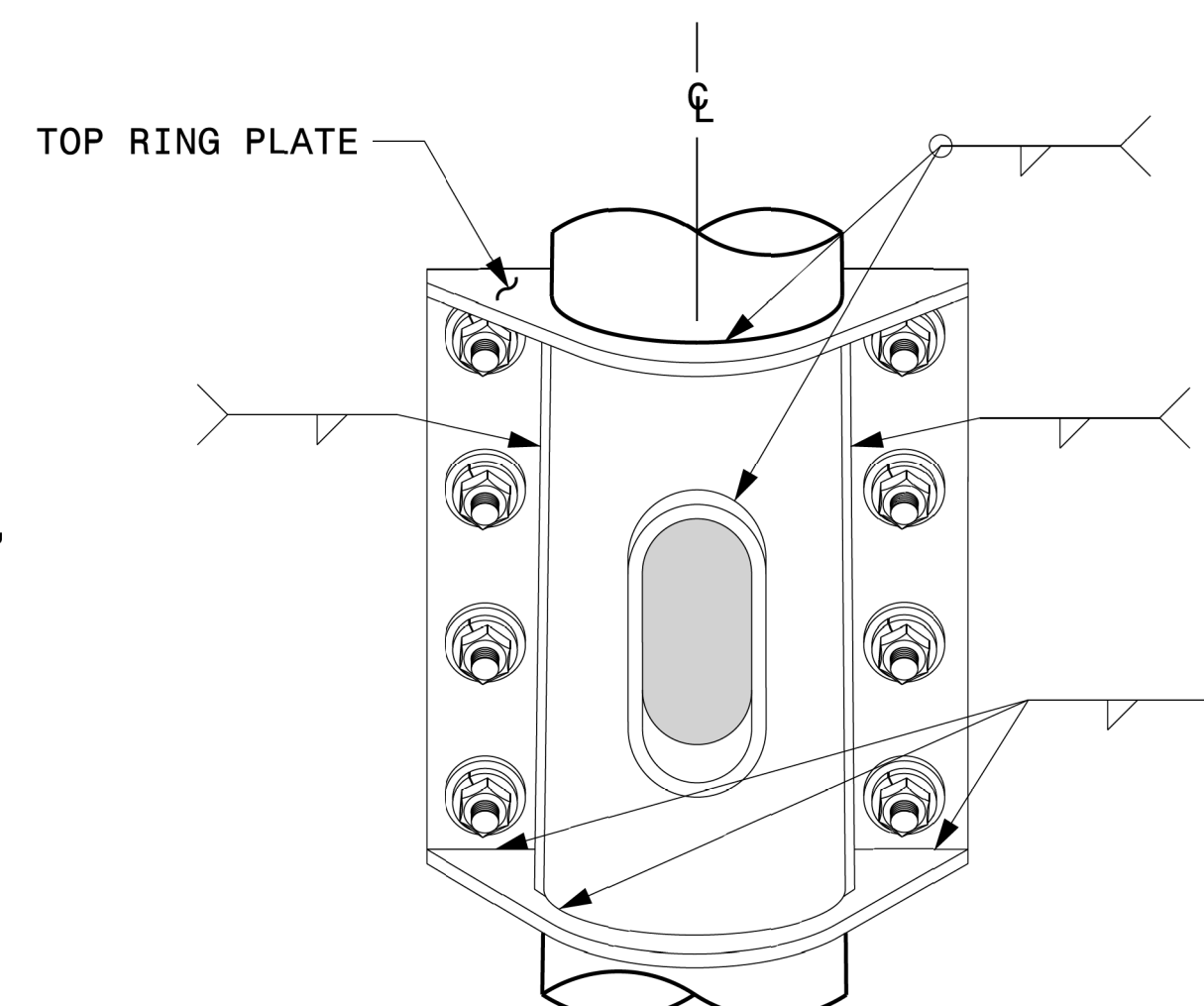
1. PROVIDE A PERMANENT MEANS OF IDENTIFICATION ABOVE THE MAST ARM TO INDICATE PROPER ATTACHMENT ORIENTATION OF THE MAST ARM.
2. DESIGNER WILL DETERMINE THE SIZE OF ALL STRUCTURAL COMPONENTS, PLATES, FASTENERS, AND WELDS SHOWN UNLESS THEY ARE ALREADY SPECIFIED.
3. FABRICATOR IS RESPONSIBLE FOR PROVIDING APPROPRIATE HOLES AT DRAINAGE POINTS TO DRAIN GALVANIZING MATERIALS.
4. FOR MINIMUM EDGE DISTANCE AND NOMINAL BOLT HOLE SIZE, FOLLOW THE LATEST AISC STEEL CONSTRUCTION MANUAL.
5. PROVIDE UPPER HANDHOLE AS NECESSARY WHEN SHAFT EXTENSIONS ARE REQUIRED FOR LUMINAIRE ARMS OR CAMERA. FOR POLES WITHOUT LUMINAIRES/CAMERA, WIRING CAN BE DONE THROUGH THE TOP OF POLE.
6. ALLOWABLE RANGE OF FLANGE TILT ANGLE WILL VARY FROM 0° TO AS REQUIRED.



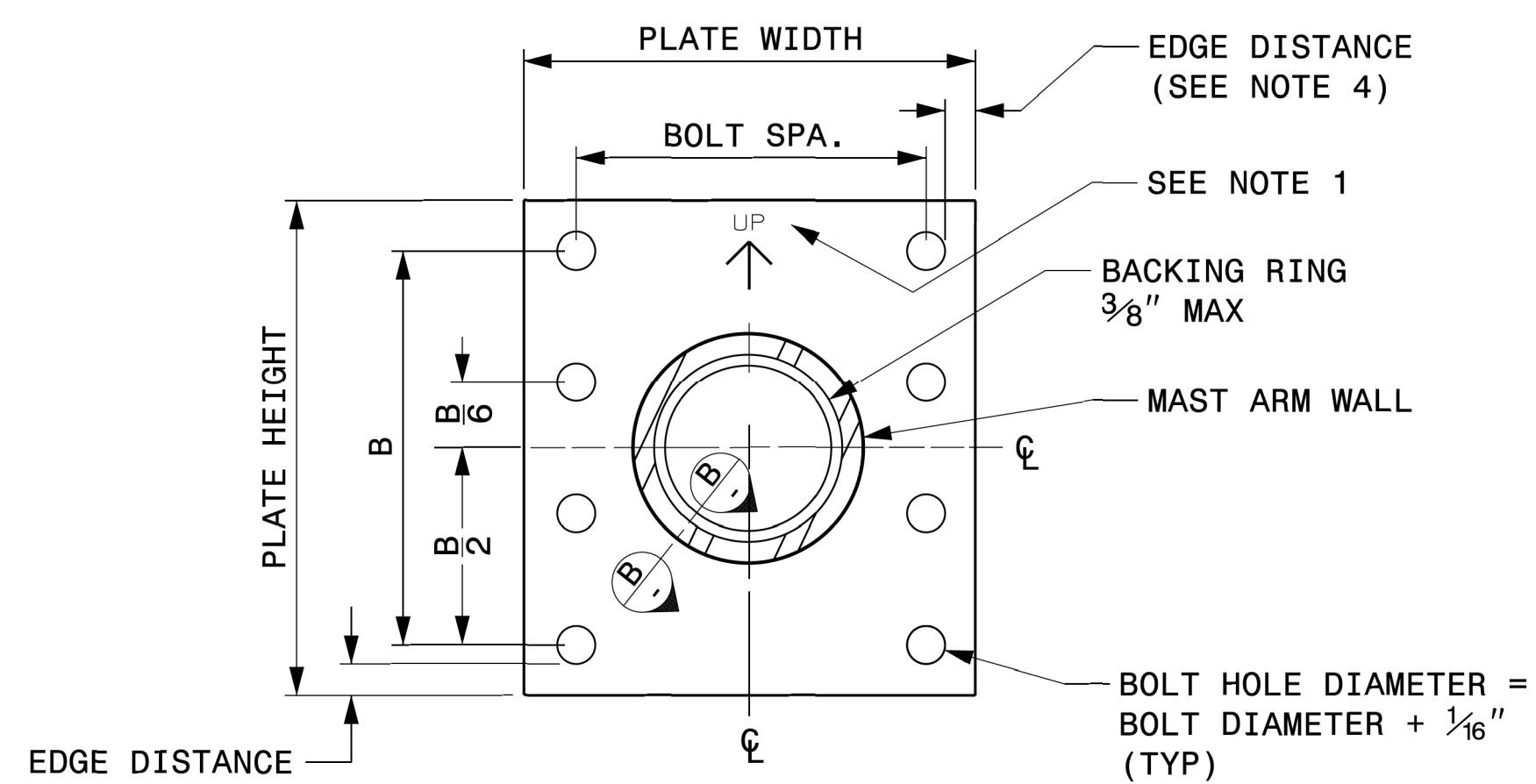
**FRONT ELEVATION VIEW**



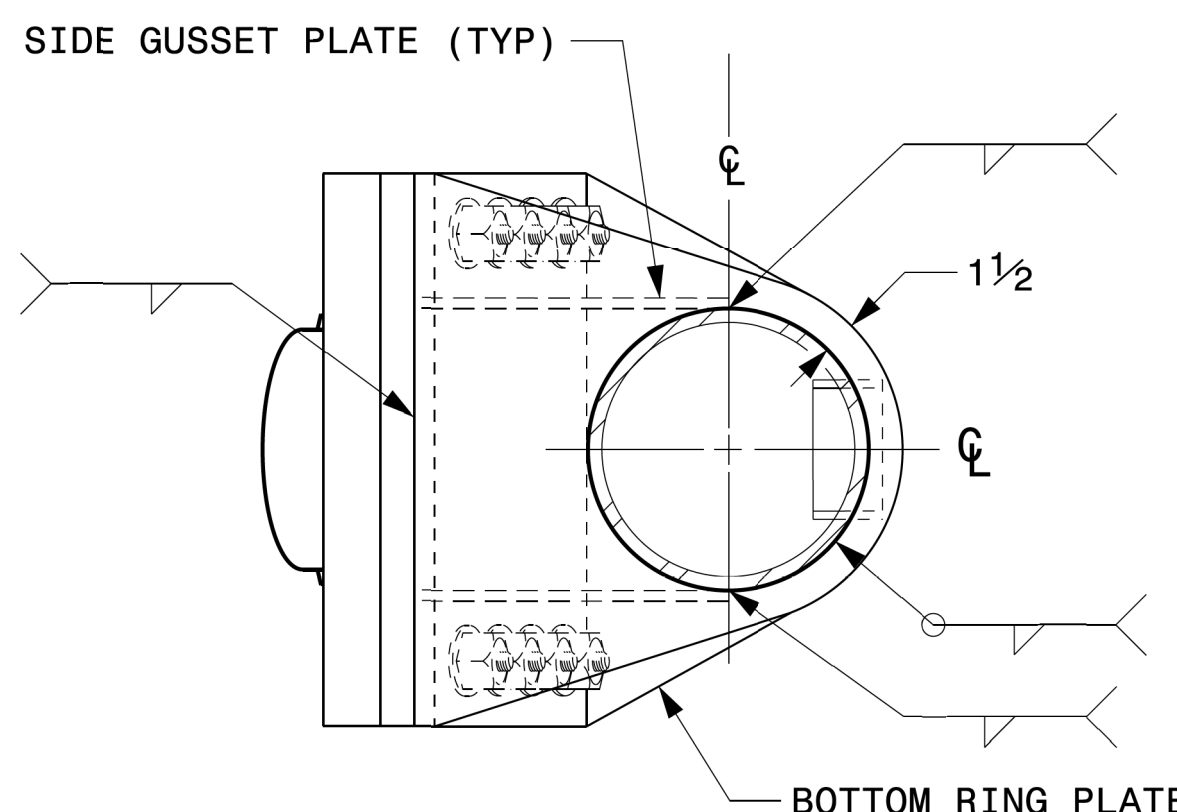
**SIDE ELEVATION VIEW**



**BACK ELEVATION VIEW**



**SECTION A-A**  
**MAST ARM ATTACHMENT PLATE**



**BOTTOM VIEW**

<p>750 N. Grandfield Hwy, Garner, NC 27529</p>	<p>Typical Fabrication Details For Mast Arm Connection To Pole</p>		<p>SEAL</p>					
	<p>PLAN DATE: SEPTEMBER 2023 DESIGNED BY: C.F. ANDREWS</p> <p>PREPARED BY: K.C. DURIGON REVIEWED BY: D.C. SARKAR</p>	<table border="1"> <tr> <th>REVISIONS</th> <th>INIT.</th> <th>DATE</th> </tr> <tr> <td> </td> <td> </td> <td> </td> </tr> </table>		REVISIONS	INIT.	DATE		
REVISIONS	INIT.	DATE						
<p>SCALE: 0 NA NONE</p>	<p>DATE: 09/21/2023</p>		<p>DATE: 09/21/2023</p>					

09-21-2023 12:38  
 S:\TSS\11\TSS\Sig.M5.dgn  
 Design Section Structures Drawings 2024 Metal Pole Std Drawings for LRFD 2024 Sig.M5 Std. Connection Fabrication Detail 11-Mast Arm Poles.dgn  
 kcdurigon

**Fabrication Details – Mast Arm Connection**