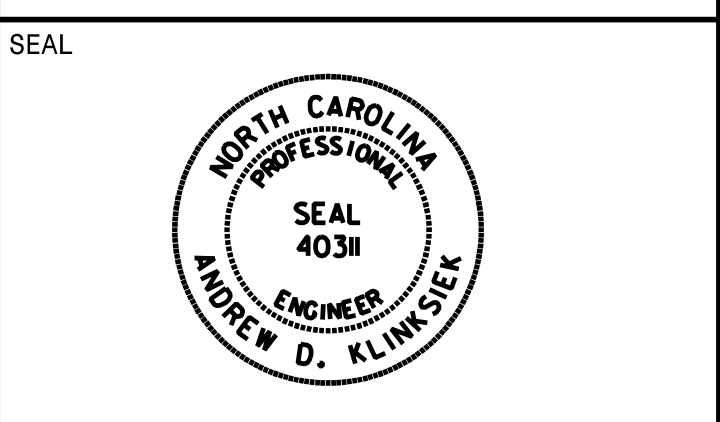


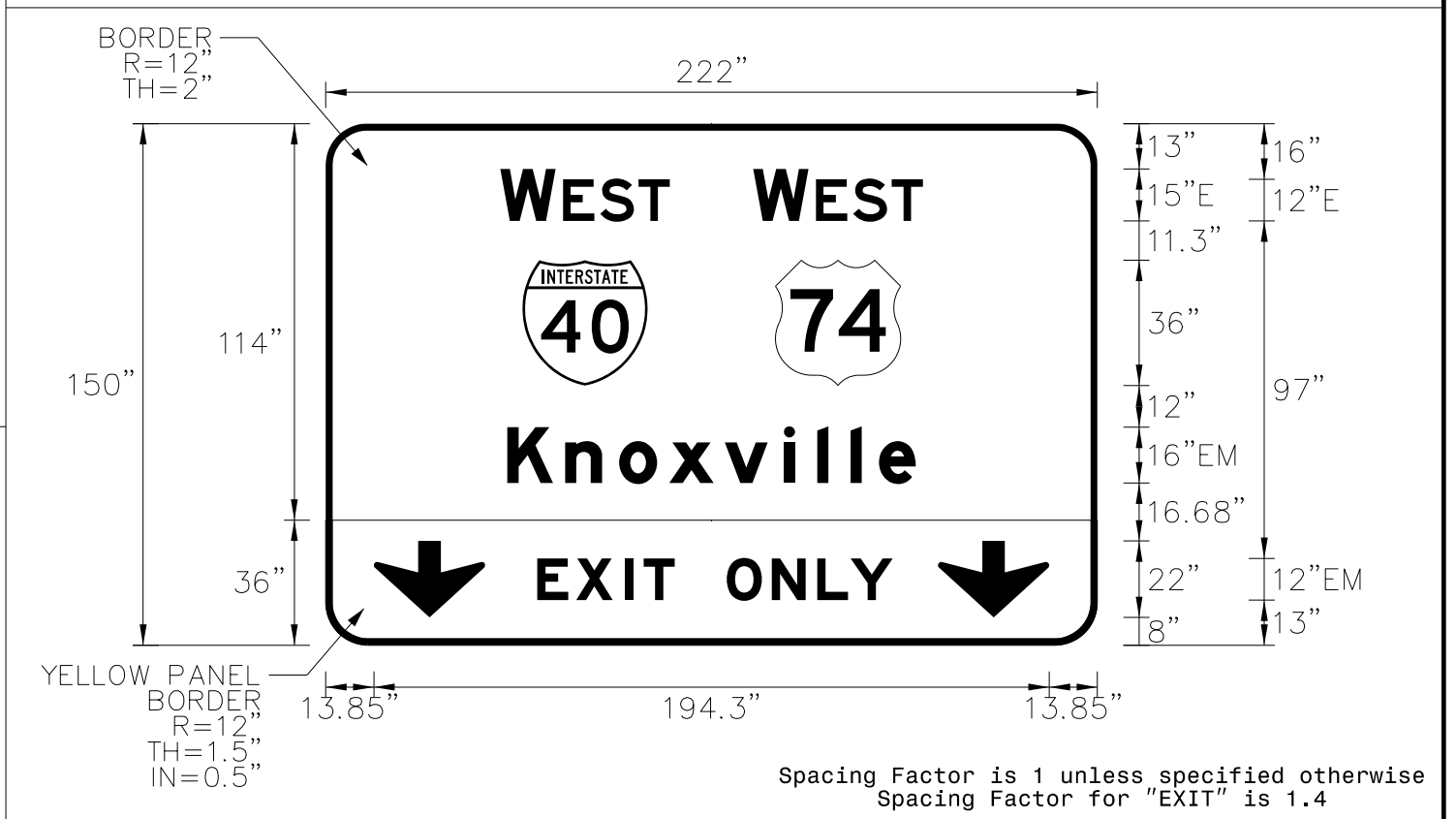
APPROVED: *Andrew Klimesek*
 DATE: 2/1/2024



DOCUMENT NOT CONSIDERED FINAL
 UNLESS ALL SIGNATURES COMPLETED

SIGN NUMBER: 19B,27B BACKG COLOR: Green/Yellow
 TYPE: A (OVHD) COPY COLOR: White/Black
 QUANTITY: 2
 SIGN WIDTH: 18'-6" HEIGHT: 12'-6"
 TOTAL AREA: 231.3 Sq.Ft.
 BORDER TYPE: VAR. RECESS: VAR. WIDTH: VAR. RADII: VAR.
 NO. Z BARS: 4 LENGTH: 214.0
 MAT'L: 0.125" ALUMINUM

DESIGN BY: TRT CHECKED BY: NKV
 PROJECT ID: I-2513AA/AB DIV: 13 DATE: July 2023



- NOTES:
- Legend and border shall be direct applied Grade A reflective sheeting.
 - Shields shall be Grade A reflective sheeting on 0.032" aluminum and demountable.
 - Background shall be Grade C reflective sheeting.
 - Bottom panel shall be yellow Grade C sheeting. Legend shall be direct applied black non-reflective sheeting. Arrows shall be black non-reflective sheeting on 0.032" aluminum and demountable. Yellow panel is 222" X 36". (Border Type = Recessed, Recess = 0.5", Width = 1.5", Radii = 12")

LETTER POSITIONS

Letter spacings are to start of next letter

Letter	W	E	S	T	Series/Size								
WEST WEST	50.2	15.9	2.2	10.7	11	9	12.3	E 2000	48.8				
KNOXVILLE	52.3	16.6	15.5	14.4	16	17	9.6	9.6	8.2	10.6	52.3	EM 2000	117.4
EXIT ONLY	60.9	11.2	14	5.4	8.9	121.6						EM 2000	39.5
EXIT ONLY	115.4	13	13.1	9.6	12.1	58.9						EM 2000	47.8

SIGN NUMBER: 20,23 BACKG COLOR: Green
 TYPE: A (OVHD) COPY COLOR: White
 QUANTITY: 2
 SIGN WIDTH: 17'-6" HEIGHT: 15'-0"
 TOTAL AREA: 262.5 Sq.Ft.
 BORDER TYPE: FLUSH RECESS: 0" WIDTH: 2" RADII: 12"
 NO. Z BARS: 6 LENGTH: 202.0
 MAT'L: 0.125" ALUMINUM

DESIGN BY: TRT CHECKED BY: NKV
 PROJECT ID: I-2513AA/AB DIV: 13 DATE: July 2023



- NOTES:
- Legend and border shall be direct applied Grade A reflective sheeting.
 - Arrows and shield shall be Grade A reflective sheeting on 0.032" aluminum and demountable.
 - Background shall be Grade C reflective sheeting.

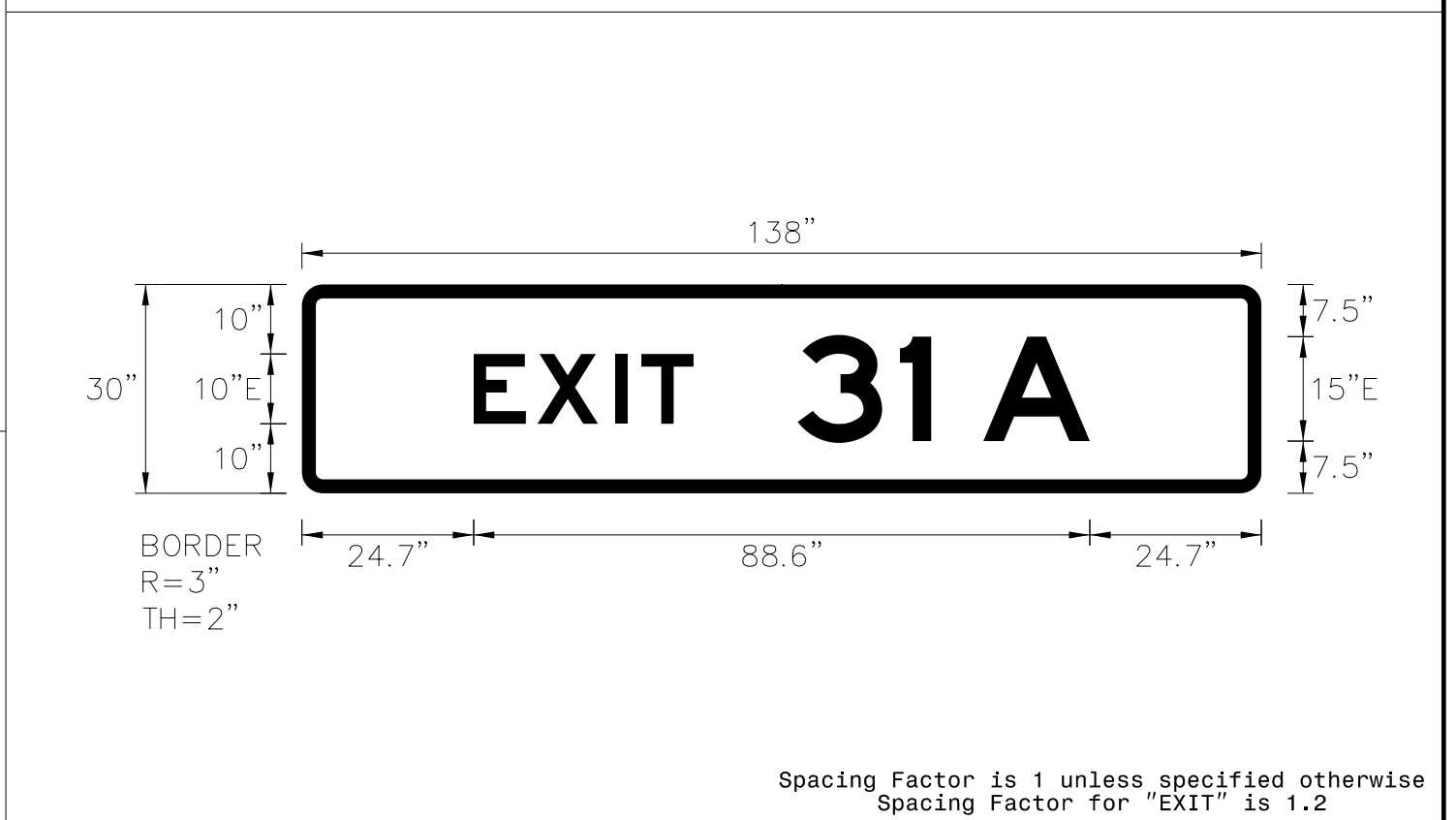
LETTER POSITIONS

Letter spacings are to start of next letter

Letter	W	E	S	T	Series/Size											
WEST	106.1	15.9	2.2	10.7	11	9	55.2	E 2000	48.8							
ASHEVILLE	46	18.2	15.5	15.5	13.8	17	9.6	9.6	8.2	10.6	46	EM 2000	117.9			
DOWNTOWN	56.3	12.1	11.8	14.8	11.8	10.7	11.8	14.8	9.7	56.3		E 2000	97.3			
JOHNSON CITY	19.3	16.2	15.8	17	15.2	14.1	15.8	10.6	16	17.4	8	11.7	13.6	19.3	EM 2000	171.4

SIGN NUMBER: 21A,26A,28A BACKG COLOR: Green
 TYPE: B (OVHD) COPY COLOR: White
 QUANTITY: 3
 SIGN WIDTH: 11'-6" HEIGHT: 2'-6"
 TOTAL AREA: 28.8 Sq.Ft.
 BORDER TYPE: FLUSH RECESS: 0" WIDTH: 2" RADII: 3"
 NO. Z BARS: 2 LENGTH: 130.0
 MAT'L: 0.125" ALUMINUM

DESIGN BY: TRT CHECKED BY: NKV
 PROJECT ID: I-2513AA/AB DIV: 13 DATE: July 2023



- NOTES:
- Legend and border shall be direct applied Grade A reflective sheeting.
 - Background shall be Grade C reflective sheeting.
 - Use Attachment Method 1-R.

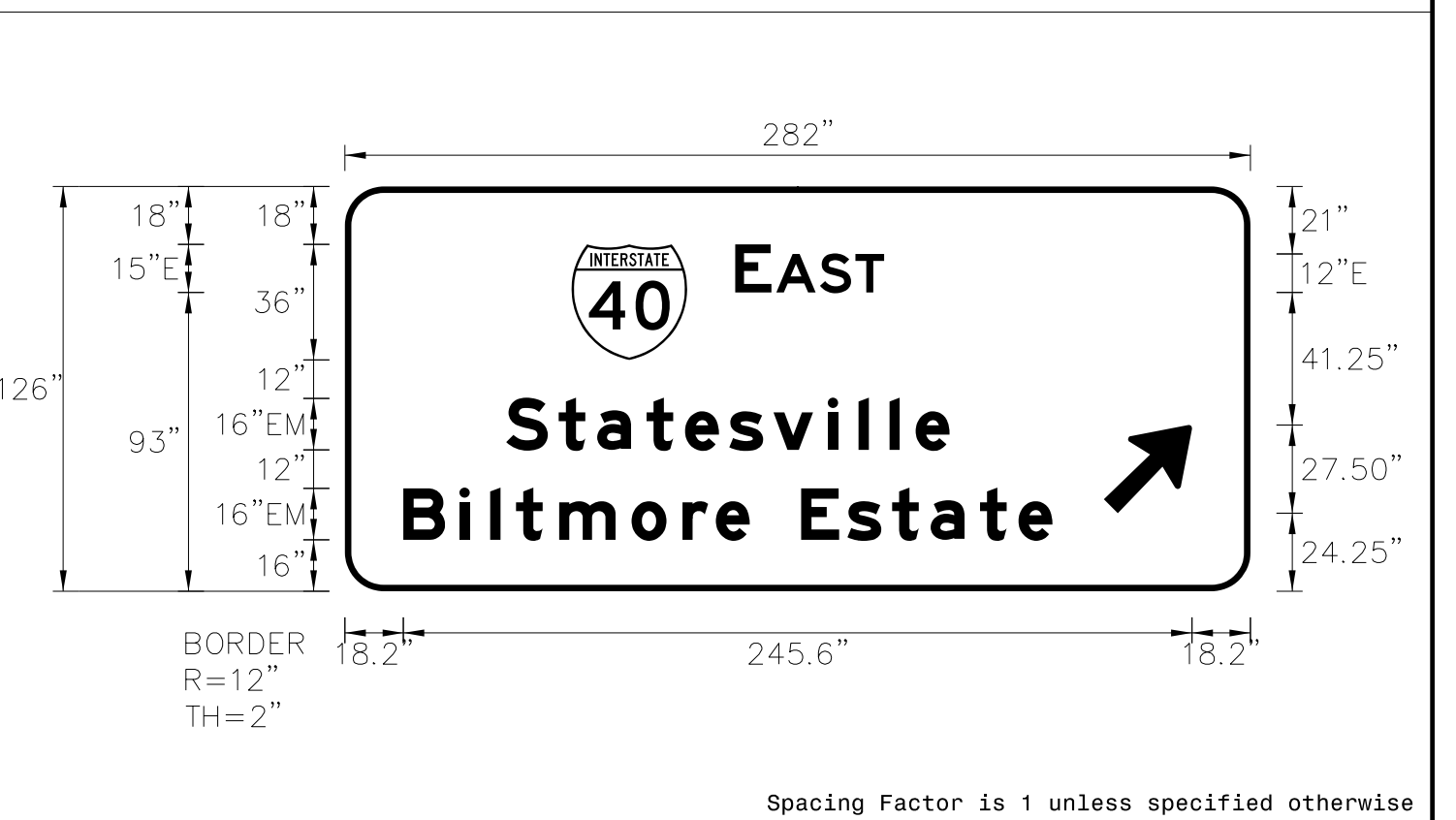
LETTER POSITIONS

Letter spacings are to start of next letter

Letter	E	X	I	T	Series/Size			
EXIT 31A	24.7	9.2	11.1	3.8	7.5	81.7	E 2000	31.6
EXIT 31A	71.3	14.7	4.5	7.5	15.3	24.7	E 2000	42

SIGN NUMBER: 21B BACKG COLOR: Green
 TYPE: A (OVHD) COPY COLOR: White
 QUANTITY: 1
 SIGN WIDTH: 23'-6" HEIGHT: 10'-6"
 TOTAL AREA: 246.8 Sq.Ft.
 BORDER TYPE: FLUSH RECESS: 0" WIDTH: 2" RADII: 12"
 NO. Z BARS: 3 LENGTH: 274.0
 MAT'L: 0.125" ALUMINUM

DESIGN BY: TRT CHECKED BY: NKV
 PROJECT ID: I-2513AA/AB DIV: 13 DATE: July 2023



- NOTES:
- Legend and border shall be direct applied Grade A reflective sheeting.
 - Arrow and shield shall be Grade A reflective sheeting on 0.032" aluminum and demountable.
 - Background shall be Grade C reflective sheeting.

LETTER POSITIONS

Letter spacings are to start of next letter

Letter	E	A	S	T	Series/Size														
EAST	121.6	11.3	1.5	13.6	11	9	114	E 2000	46.4										
STATESVILLE	50.2	16.3	12	15.4	12	13.8	13.8	17	9.6	9.6	8.2	10.6	93.7	EM 2000	138.1				
BILTMORE ESTATE	18.2	17.4	9.6	8	13.4	22.6	15.8	10.4	10.6	16	14.4	13.9	12	15.4	12	10.6	61.7	EM 2000	202.1