

NOTE: PLACE TEMPORARY ROCK SEDIMENT DAMS TYPE - B AND TEMPORARY ROCK SILT CHECKS TYPE - A AT DRAINAGE OUTLETS.

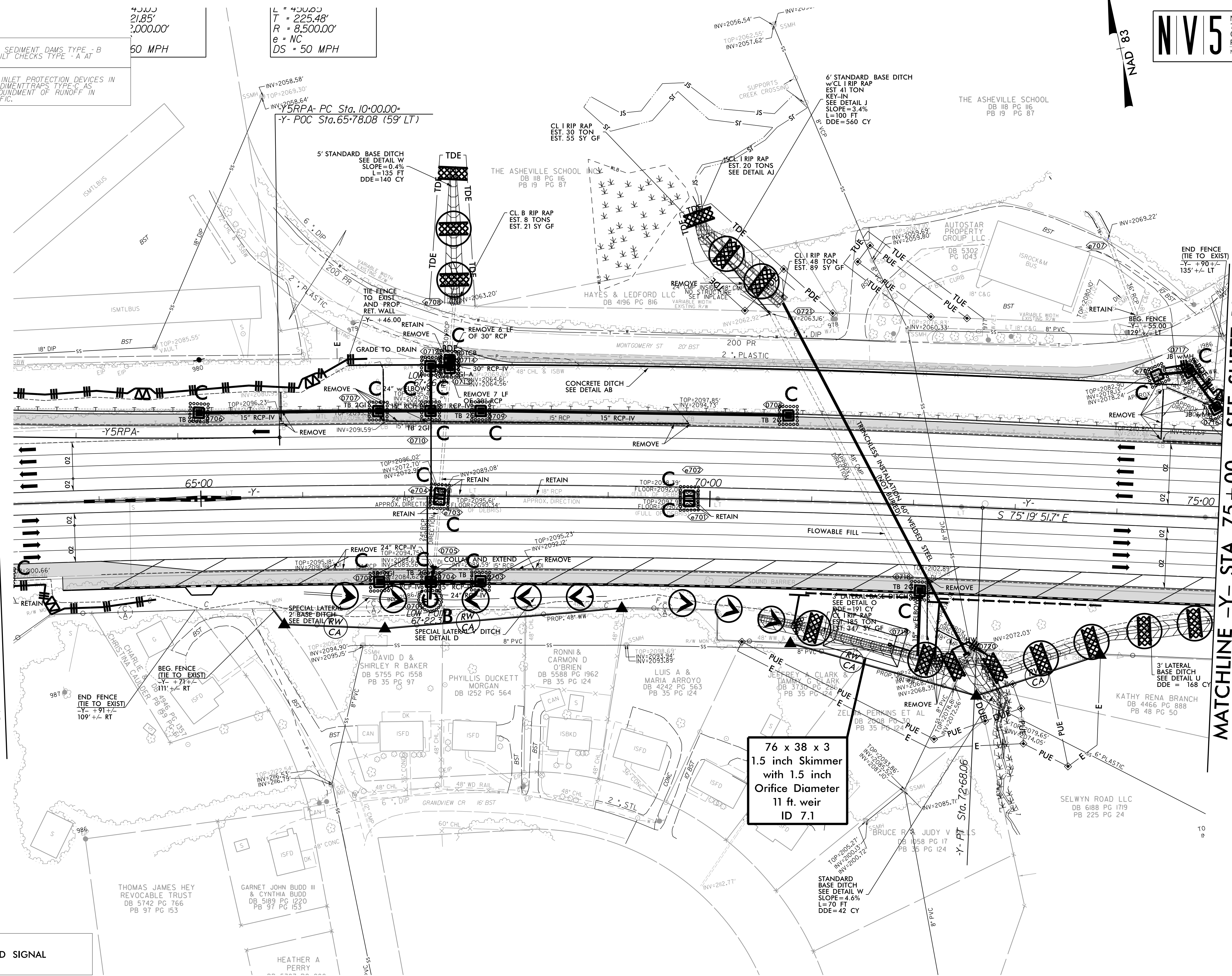
NOTE: UTILIZE FABRIC INSERT INLET PROTECTION DEVICES IN LIEU OF ROCK INLET SEDIMENT TRAPS TYPE - C AS DIRECTED TO AVOID IMPONDMENT OF RUNOFF IN ROADWAY OPEN TO TRAFFIC.

60 MPH

$L = 4300.00$   
 $T = 225.48'$   
 $R = 8,500.00'$   
 $e = NC$   
 $DS = 50 MPH$

MATCHLINE -Y- STA 63+00 - SEE SHEET 16

MATCHLINE -Y- STA 75+00 - SEE SHEET 18



76 x 38 x 3  
 1.5 inch Skimmer  
 with 1.5 inch  
 Orifice Diameter  
 11 ft. weir  
 ID 7.1

☆ REVISED SIGNAL

REVISIONS

8/17/99  
 I:\9\2024  
 R:\Environmental\Design\AAAB\_PSH\1-25\3AAAB\_IC\_PSH\_17.dgn  
 c:\users\j\appdata\local\temp\amelsk\amelsk.dgn