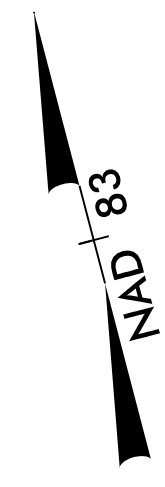


NOTE: PLACE TEMPORARY ROCK SEDIMENT DAMS TYPE - B AND TEMPORARY ROCK SILT CHECKS TYPE - A AT DRAINAGE OUTLETS.

NOTE: UTILIZE FABRIC INSERT INLET PROTECTION DEVICES IN LIEU OF ROCK INLET SEDIMENT TRAPS TYPE - C AS DIRECTED TO AVOID IMPEDIMENT OF RUNOFF IN ROADWAY OPEN TO TRAFFIC.

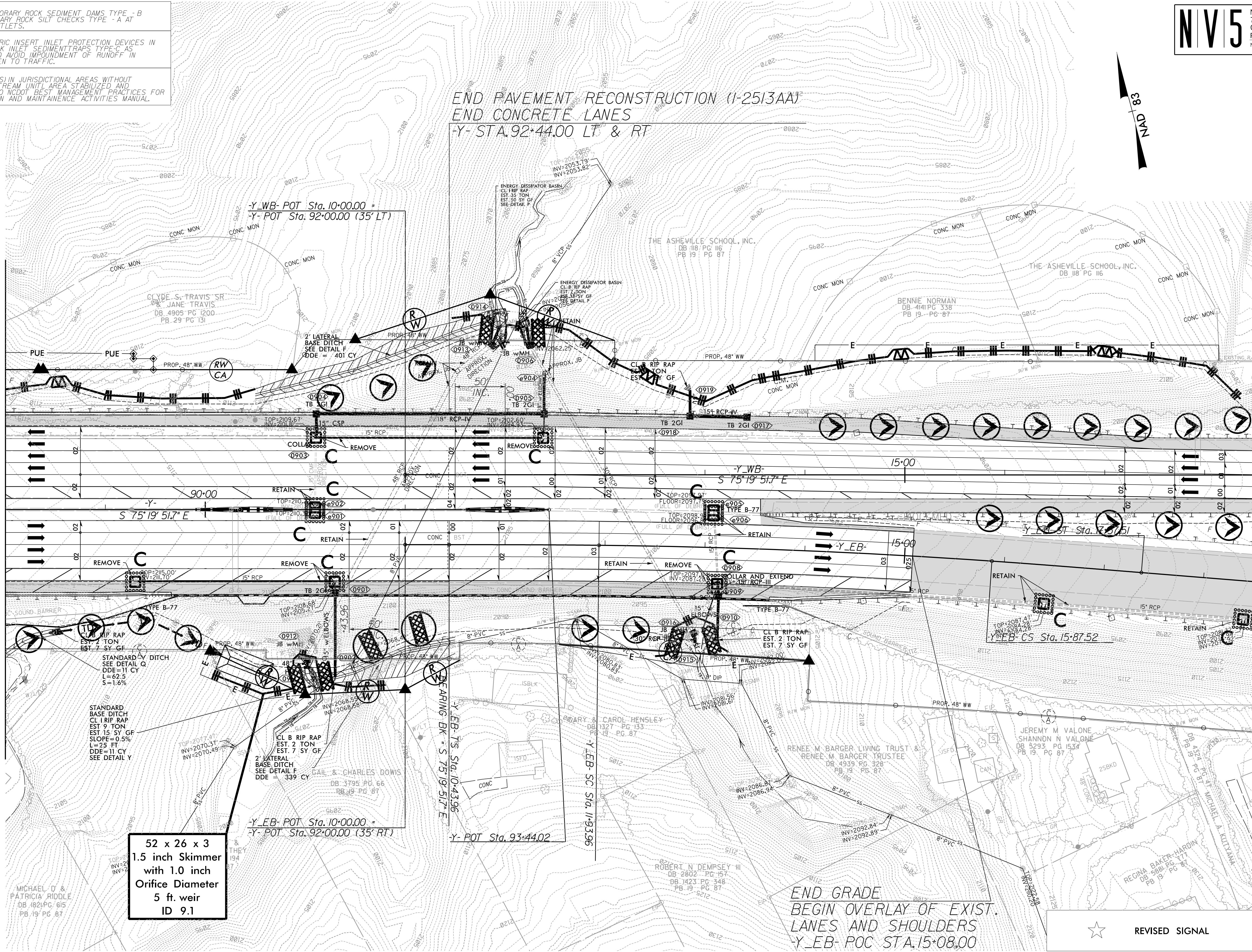
NOTE: INSTALL PIPE(S) IN JURISDICTIONAL AREAS WITHOUT IMPACTING STREAM UNTIL AREA STABILIZED AND ACCORDING TO NCDOT BEST MANAGEMENT PRACTICES FOR CONSTRUCTION AND MAINTENANCE ACTIVITIES MANUAL.

END PAVEMENT RECONSTRUCTION (I-25/3AA)
 END CONCRETE LANES
 -Y- STA. 92+44.00 LT & RT



MATCHLINE -Y- STA 88+00 - SEE SHEET 8

MATCHLINE -Y- WB- STA 18+50 - SEE SHEET 10



52 x 26 x 3
 1.5 inch Skimmer
 with 1.0 inch
 Orifice Diameter
 5 ft. weir
 ID 9.1

END GRADE
 BEGIN OVERLAY OF EXIST.
 LANES AND SHOULDERS
 -Y-EB-POC STA. 15+08.00

☆ REVISED SIGNAL

REVISIONS

8/17/99
 I:\8\2024
 R:\Environmental\Design\AAAB_PSH\1-25I3AAAB-1C_PSH_091.dgn
 samuelstana