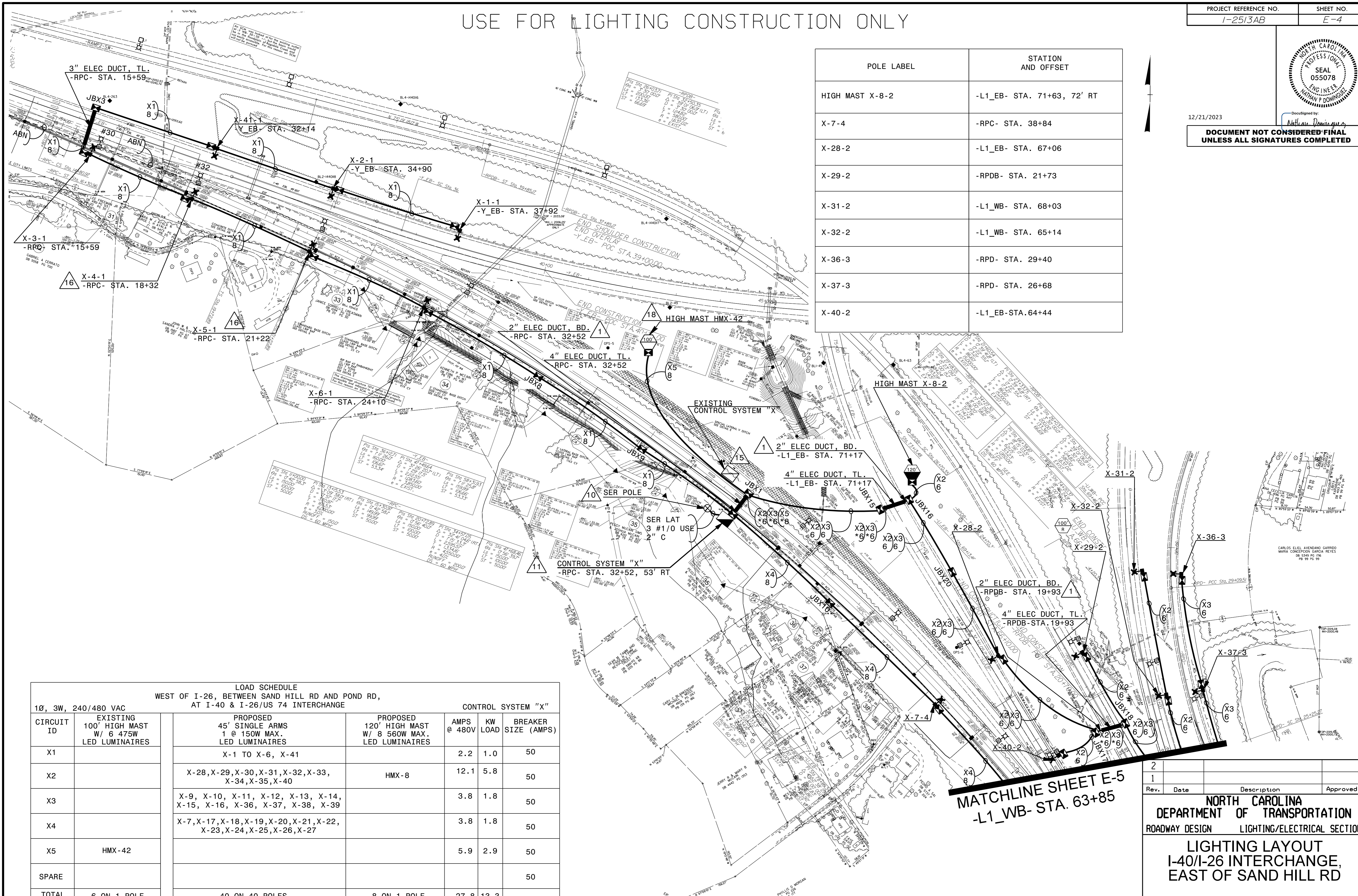


USE FOR LIGHTING CONSTRUCTION ONLY



12/21/2023
 DOCUMENT NOT CONSIDERED FINAL
 UNLESS ALL SIGNATURES COMPLETED

POLE LABEL	STATION AND OFFSET
HIGH MAST X-8-2	-L1_EB- STA. 71+63, 72' RT
X-7-4	-RPC- STA. 38+84
X-28-2	-L1_EB- STA. 67+06
X-29-2	-RPDB- STA. 21+73
X-31-2	-L1_WB- STA. 68+03
X-32-2	-L1_WB- STA. 65+14
X-36-3	-RPD- STA. 29+40
X-37-3	-RPD- STA. 26+68
X-40-2	-L1_EB- STA. 64+44



LOAD SCHEDULE WEST OF I-26, BETWEEN SAND HILL RD AND POND RD, AT I-40 & I-26/US 74 INTERCHANGE						
1Ø, 3W, 240/480 VAC		CONTROL SYSTEM "X"				
CIRCUIT ID	EXISTING 100' HIGH MAST W/ 6 475W LED LUMINAIRES	PROPOSED 45' SINGLE ARMS 1 @ 150W MAX. LED LUMINAIRES	PROPOSED 120' HIGH MAST W/ 8 560W MAX. LED LUMINAIRES	AMPS @ 480V	KW LOAD	BREAKER SIZE (AMPS)
X1		X-1 TO X-6, X-41		2.2	1.0	50
X2		X-28, X-29, X-30, X-31, X-32, X-33, X-34, X-35, X-40	HMX-8	12.1	5.8	50
X3		X-9, X-10, X-11, X-12, X-13, X-14, X-15, X-16, X-36, X-37, X-38, X-39		3.8	1.8	50
X4		X-7, X-17, X-18, X-19, X-20, X-21, X-22, X-23, X-24, X-25, X-26, X-27		3.8	1.8	50
X5	HMX-42			5.9	2.9	50
SPARE						50
TOTAL	6 ON 1 POLE	40 ON 40 POLES	8 ON 1 POLE	27.8	13.3	

EXISTING LIGHTING INSTALLED AS HPS UNDER I-4401 (LET DATE 4/19/05).
 UPGRADED TO LED BY A BRADY/TRANE GUARANTEED ENERGY SAVINGS
 CONTRACT IN 2018/2019.

MATCHLINE SHEET E-5
 -L1_WB- STA. 63+85

SEE SHEET "E-1" FOR
 LEGEND & Δ NOTES

I5-NOV-2023 14:16:16 C:\Users\mmsquad1\OneDrive\Lighting Design\12513AB\PSH-E4.dgn mmsquad1 - At 9:00:39 AM

2
1

Rev.	Date	Description	Approved

NORTH CAROLINA DEPARTMENT OF TRANSPORTATION
 ROADWAY DESIGN LIGHTING/ELECTRICAL SECTION

LIGHTING LAYOUT I-40/I-26 INTERCHANGE, EAST OF SAND HILL RD

BUNCOMBE COUNTY

Drawn By: MSQ Approved By: RGH Dwg No.: