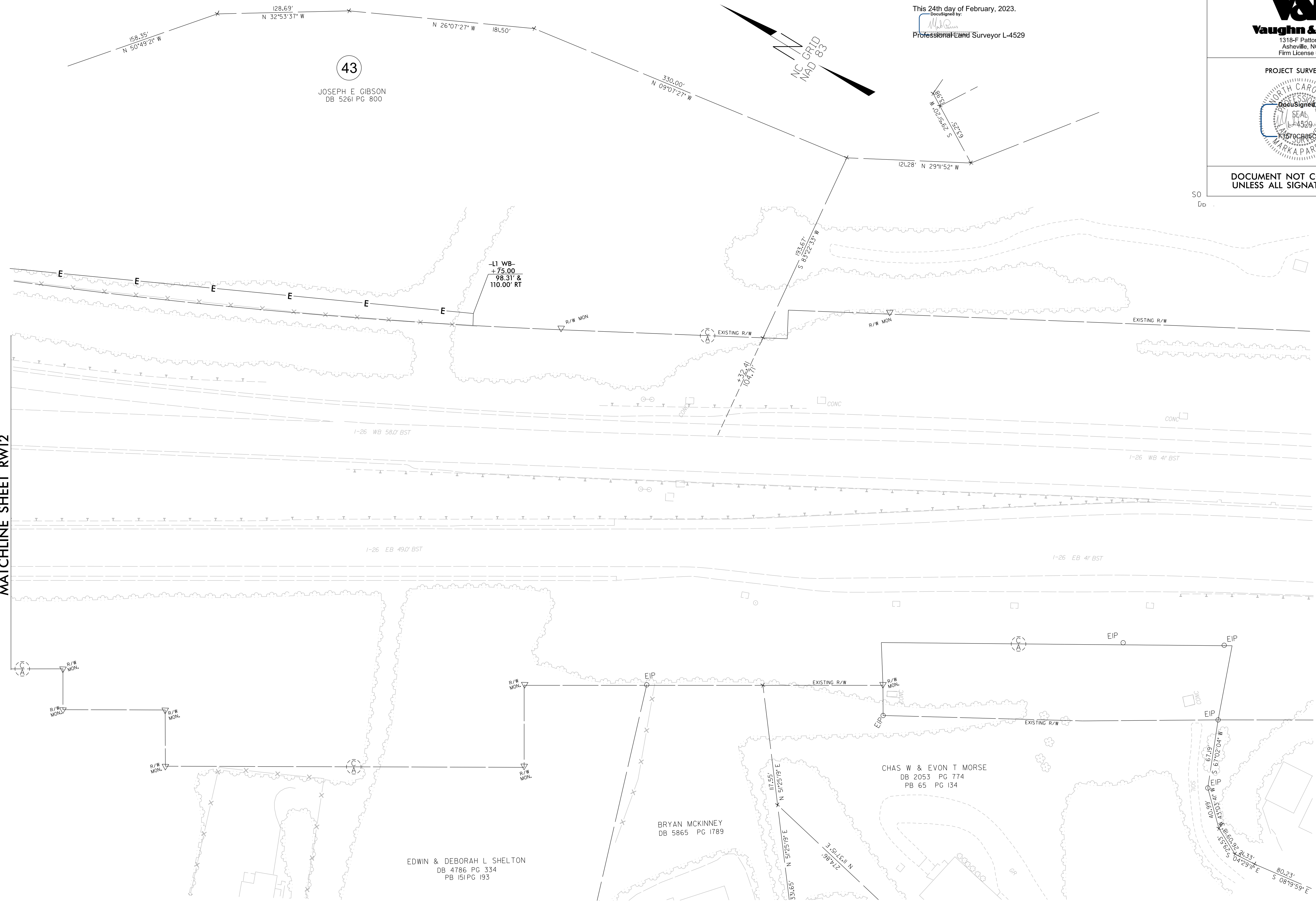


REVISIONS

MATCHLINE SHEET RW12



43
 JOSEPH E GIBSON
 DB 5261 PG 800

L1 WB
 +75.00
 +98.31' &
 +110.00' RT

EDWIN & DEBORAH L SHELTON
 DB 4786 PG 334
 PB 151 PG 193

BRYAN MCKINNEY
 DB 5865 PG 1789

CHAS W & EVON T MORSE
 DB 2053 PG 774
 PB 65 PG 134

I, Mark A. Parris, certify that the right of way and permanent easement monumentation for this project shown herein was completed under my direct and responsible charge from an actual survey made under my supervision, that all horizontal closures had a minimum ratio of precision of 1:10,000 (Class A). Field work was performed from 1/20/23 to 2/01/23, and all coordinates are based on NAD83/2011. That this survey was performed to meet the requirements of 21NCAC 56.1600 as applicable.

This 24th day of February, 2023.

DocuSigned by:
 Mark A. Parris
 Professional Land Surveyor L-4529

PROJECT REFERENCE NO. I-2513AA/AB	SHEET NO. RW13
Location and Surveys	
 1318-F Patton Avenue Asheville, NC 28806 Firm License # F-1088	
PROJECT SURVEYOR	
DOCUMENT NOT CONSIDERED FINAL UNLESS ALL SIGNATURES COMPLETED	

NOTES:

1. IF FURTHER INFORMATION REGARDING PROJECT CONTROL IS NEEDED PLEASE CONTACT THE LOCATION AND SURVEYS UNIT.
2. PROJECT CONTROL WAS ESTABLISHED USING GNSS, THE GLOBAL NAVIGATION SATELLITE SYSTEM.
3. RIGHT OF WAY MONUMENTATION ESTABLISHED 1/20/23 TO 2/01/23 .

**SEE SHEET RW14
 FOR ALIGNMENT DATA**