

SURVEY CONTROL SHEET

W/ EXISTING CENTERLINE ALIGNMENTS PRIOR TO CONSTRUCTION

DATUM DESCRIPTION

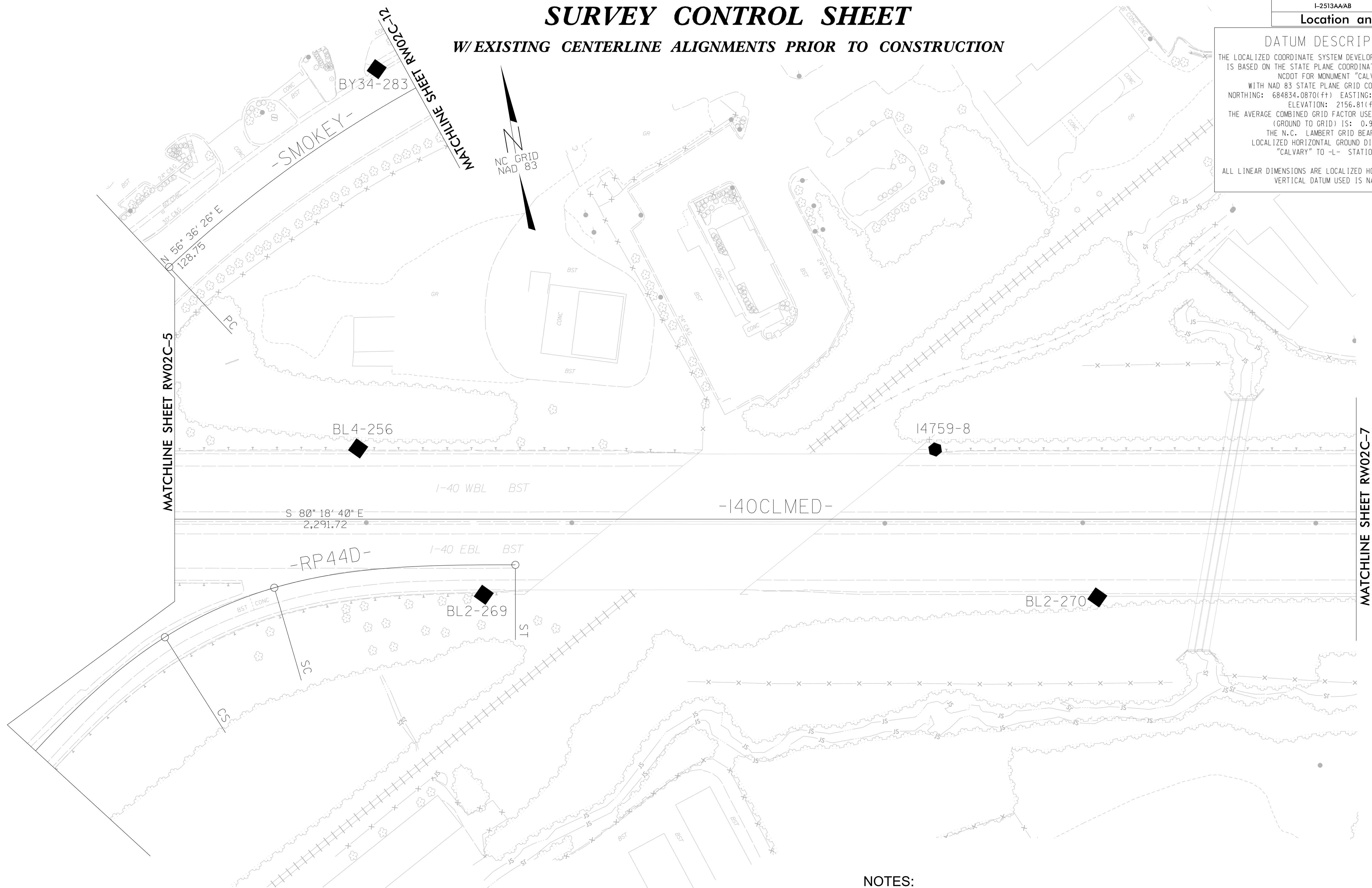
THE LOCALIZED COORDINATE SYSTEM DEVELOPED FOR THIS PROJECT IS BASED ON THE STATE PLANE COORDINATES ESTABLISHED BY NCDOT FOR MONUMENT "CALVARY"

WITH NAD 83 STATE PLANE GRID COORDINATES OF
 NORTHING: 684834.0870(ft) EASTING: 934095.9080(ft)
 ELEVATION: 2156.81(ft)

THE AVERAGE COMBINED GRID FACTOR USED ON THIS PROJECT (GROUND TO GRID) IS: 0.9997841

THE N.C. LAMBERT GRID BEARING AND LOCALIZED HORIZONTAL GROUND DISTANCE FROM "CALVARY" TO -L- STATION IS

ALL LINEAR DIMENSIONS ARE LOCALIZED HORIZONTAL DISTANCES
 VERTICAL DATUM USED IS NAVD 88



REVISIONS

I:\7-MAY-2023 12:44
 V:\NC\Survey\1032212-17_I-2513aa-con-vam2\Survey\Control Sheet Combination\I2513AA-AB-1s-RW02C-6.dgn
 Jcgordon

**SEE SHEETS RW02C-19 THRU RW02C-22
 FOR FURTHER
 ALIGNMENT DETAILS**

NOTES:

1. PROJECT CONTROL WAS ESTABLISHED USING GNSS, THE GLOBAL NAVIGATION SATELLITE SYSTEM.
2. THE SURVEY CONTROL DATA FOR THIS PROJECT HAS BEEN COMPILED FROM VARIOUS SOURCES. IF FURTHER INFORMATION REGARDING PROJECT CONTROL IS NEEDED, PLEASE CONTACT THE LOCATION AND SURVEYS UNIT.