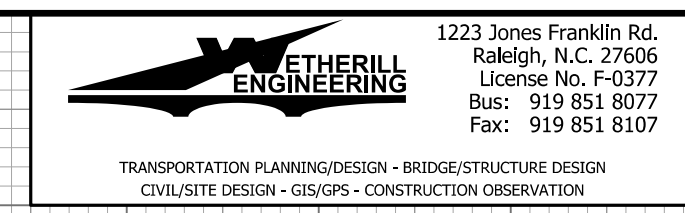
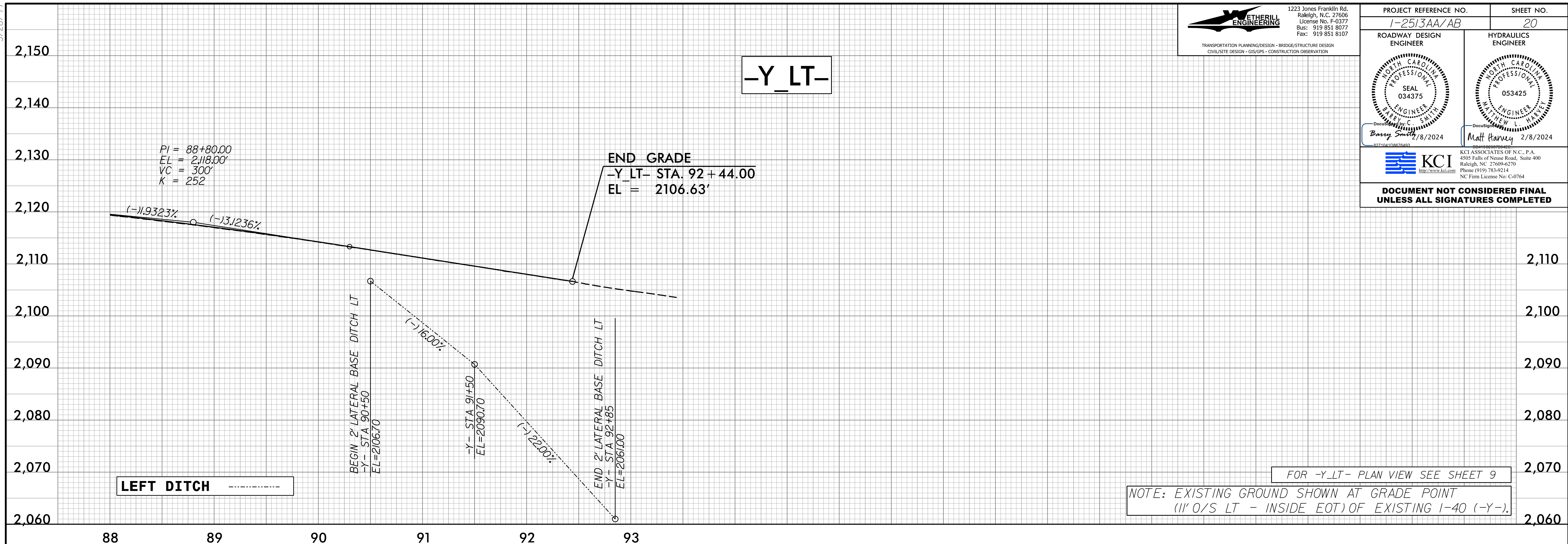


5/28/24



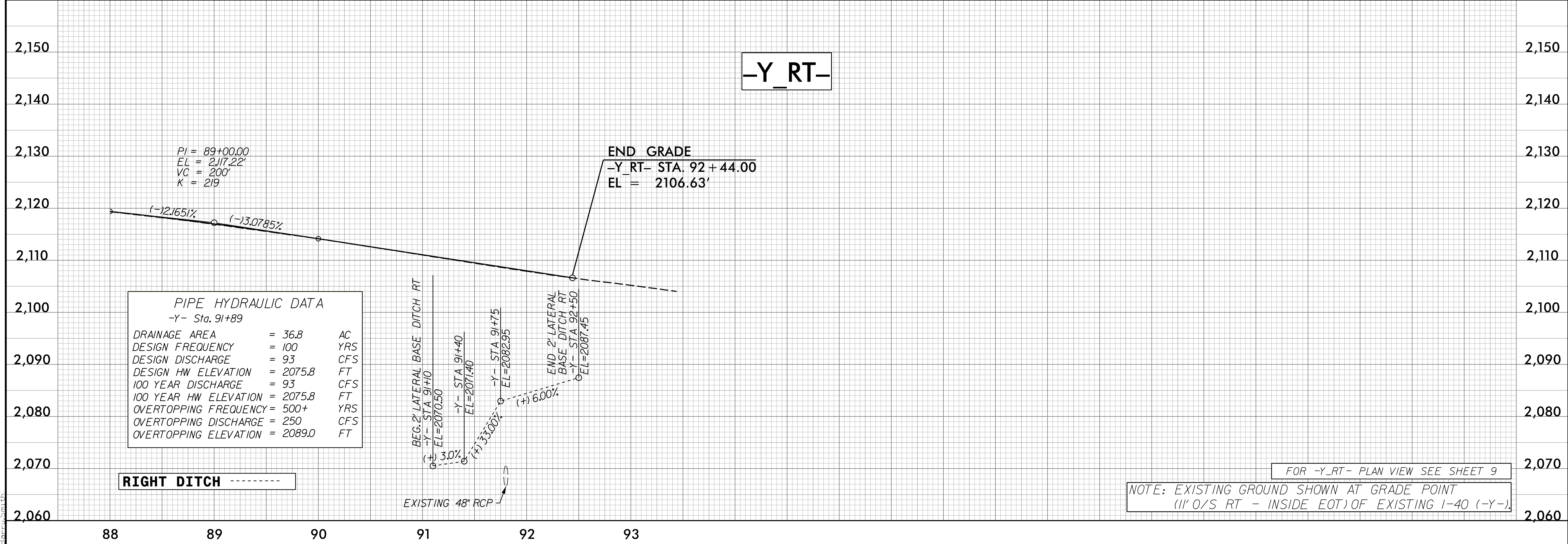
PROJECT REFERENCE NO. 1-2513AA/AB		SHEET NO. 20
ROADWAY DESIGN ENGINEER 	HYDRAULICS ENGINEER 	
DocuSign Barry C. Smith 2/8/2024	DocuSign Matt Haney 2/8/2024	
DOCUMENT NOT CONSIDERED FINAL UNLESS ALL SIGNATURES COMPLETED		



LEFT DITCH -----

FOR -Y_LT- PLAN VIEW SEE SHEET 9

NOTE: EXISTING GROUND SHOWN AT GRADE POINT (11' O/S LT - INSIDE EOT) OF EXISTING I-40 (-Y-).



PIPE HYDRAULIC DATA
-Y- Sta. 91+89

DRAINAGE AREA	= 36.8	AC
DESIGN FREQUENCY	= 100	YRS
DESIGN DISCHARGE	= 93	CFS
DESIGN HW ELEVATION	= 2075.8	FT
100 YEAR DISCHARGE	= 93	CFS
100 YEAR HW ELEVATION	= 2075.8	FT
OVERTOPPING FREQUENCY	= 500+	YRS
OVERTOPPING DISCHARGE	= 250	CFS
OVERTOPPING ELEVATION	= 2089.0	FT

RIGHT DITCH -----

FOR -Y_RT- PLAN VIEW SEE SHEET 9

NOTE: EXISTING GROUND SHOWN AT GRADE POINT (11' O/S RT - INSIDE EOT) OF EXISTING I-40 (-Y-).

9/5/2023
12:51:26 PM
B:\Projects\1-2513AA\1-2513AA.dgn