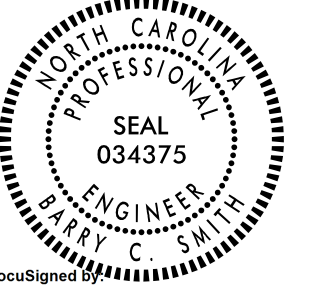
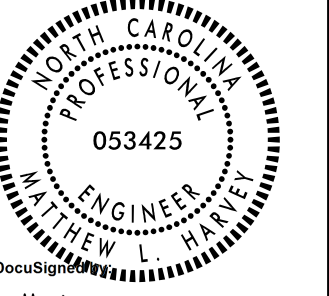




5/14/2023

12/19/2023  
1-2513AA\_rdy\_psh\_7.dgn  
tulle,cb@kci.com

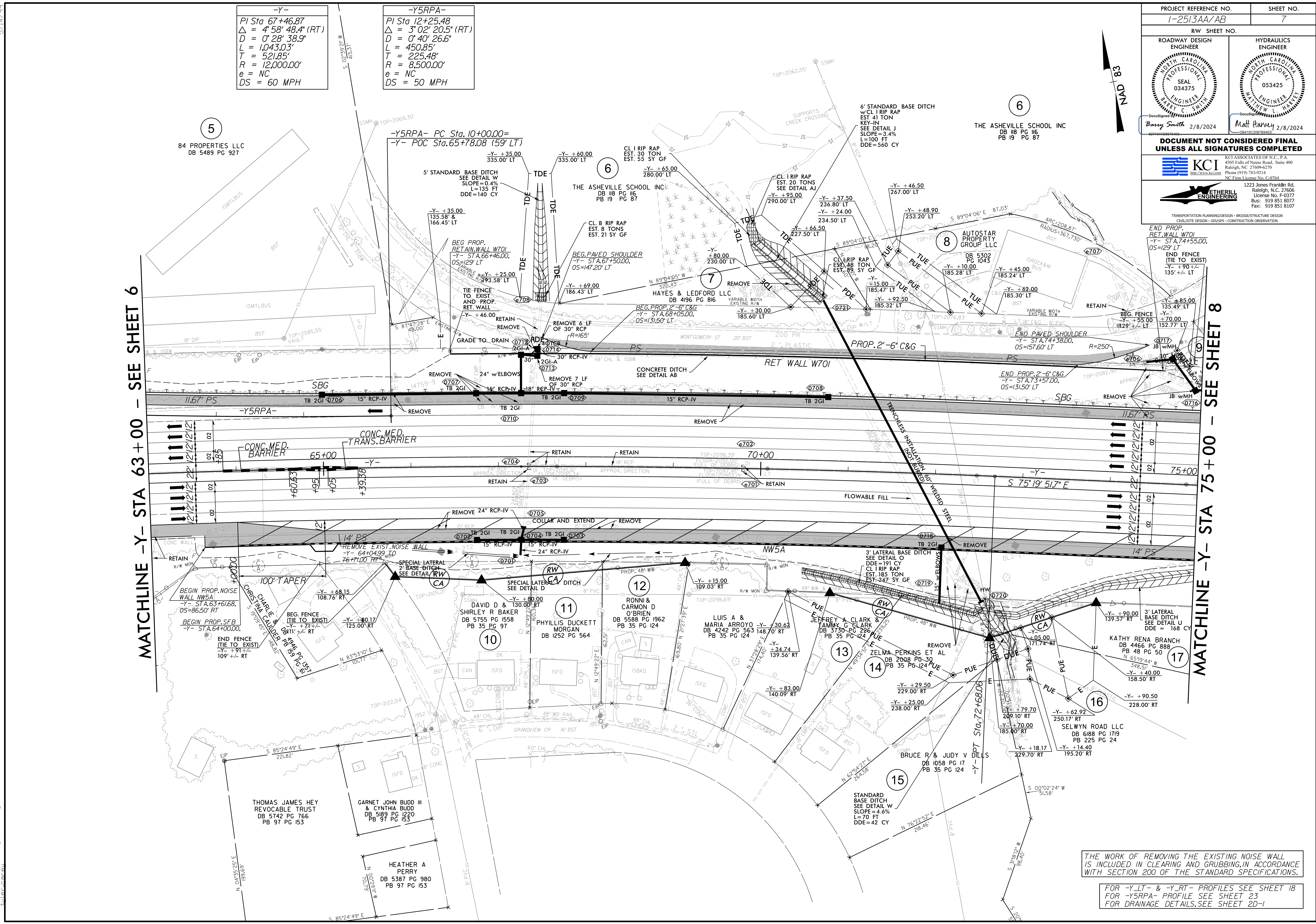
-Y-  
 PI Sta 67+46.87  
 $\Delta = 4' 58'' 48.4'' (RT)$   
 $D = 0' 28'' 38.9''$   
 $L = 1,043.03'$   
 $T = 521.85'$   
 $R = 12,000.00'$   
 $e = NC$   
 $DS = 60 MPH$

-Y5RPA-  
 PI Sta 12+25.48  
 $\Delta = 3' 02'' 20.5'' (RT)$   
 $D = 0' 40'' 26.6''$   
 $L = 450.85'$   
 $T = 225.48'$   
 $R = 8,500.00'$   
 $e = NC$   
 $DS = 50 MPH$

|   |  |  |  |
|---|--|--|--|
| PROJECT REFERENCE NO.<br>1-2513AA/AB  |  | SHEET NO.<br>7   |  |
| ROADWAY DESIGN ENGINEER   |  | HYDRAULICS ENGINEER  |  |
| <br>Barry Smith 2/8/2024   |  | <br>Matt Harvey 2/8/2024    |  |
| <b>DOCUMENT NOT CONSIDERED FINAL UNLESS ALL SIGNATURES COMPLETED</b>  |  |  |  |
| <br>KCI ASSOCIATES OF N.C., P.A.<br>4505 Falls of Noce Road, Suite 400<br>Raleigh, NC 27609-6270<br>Phone (919) 733-9114<br>NC Firm License No. C-0764 |  | 1223 Jones Franklin Rd.<br>Raleigh, N.C. 27606<br>License No. F-3377<br>Bus: 919 851 8077<br>Fax: 919 851 8107 |  |
| <br>TRANSPORTATION PLANNING/DESIGN - BRIDGE/STRUCTURE DESIGN<br>CIVIL/SITE DESIGN - GIS/GPS - CONSTRUCTION OBSERVATION                                 |  |  |  |

MATCHLINE -Y- STA 63+00 - SEE SHEET 6

MATCHLINE -Y- STA 75+00 - SEE SHEET 8



THE WORK OF REMOVING THE EXISTING NOISE WALL IS INCLUDED IN CLEARING AND GRUBBING, IN ACCORDANCE WITH SECTION 200 OF THE STANDARD SPECIFICATIONS.

FOR -Y-LT- & -Y-RT- PROFILES SEE SHEET 18  
 FOR -Y5RPA- PROFILE SEE SHEET 23  
 FOR DRAINAGE DETAILS, SEE SHEET 20-1