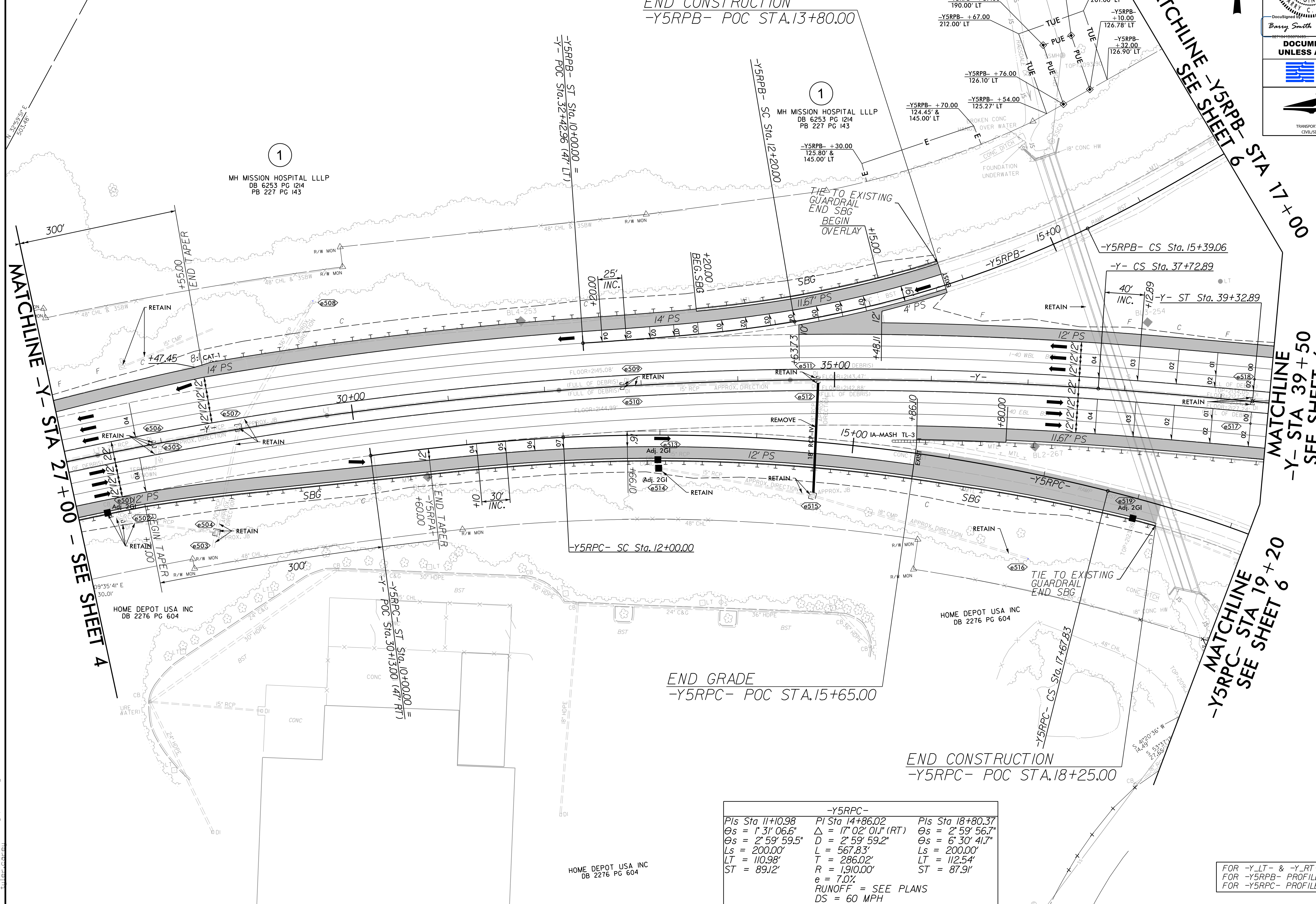


-Y-		
Pls Sta 15+33.63	Pls Sta 27+10.76	Pls Sta 38+26.22
$\Theta_s = 1' 11'' 59.7''$	$\Delta = 32' 47'' 11.6''$ (RT)	$\Theta_s = 1' 11'' 59.7''$
$L_s = 160.00'$	$D = 1' 29'' 59.6''$	$L_s = 160.00'$
$LT = 106.67'$	$L = 2,185.93'$	$LT = 106.67'$
$ST = 53.34'$	$R = 1,238.00'$	$ST = 53.34'$
	$e = 4.0\%$	
	$RUNOFF = 160.0'$	
	$DS = 60$ MPH	

-Y5RPB-		
Pls Sta 11+46.74	Pls Sta 13+80.60	Pls Sta 16+05.78
$\Theta_s = 5' 34'' 38.9''$	$\Delta = 16' 10'' 40.3''$ (LT)	$\Theta_s = 5' 04'' 13.5''$
$L_s = 220.00'$	$D = 5' 04'' 13.5''$	$L_s = 200.00'$
$LT = 146.74'$	$L = 319.06'$	$LT = 133.39'$
$ST = 73.40'$	$T = 160.60'$	$ST = 66.72'$
	$R = 1,130.00'$	
	$e = 8.0\%$	
	$RUNOFF = SEE$ PLANS	
	$DS = 50$ MPH	

-Y5RPC-		
Pls Sta 11+10.98	Pls Sta 14+86.02	Pls Sta 18+80.37
$\Theta_s = 1' 31'' 06.6''$	$\Delta = 17' 02'' 01.1''$ (RT)	$\Theta_s = 2' 59'' 56.7''$
$L_s = 200.00'$	$D = 2' 59'' 59.2''$	$\Theta_s = 6' 30'' 41.7''$
$LT = 110.98'$	$L = 567.83'$	$L_s = 200.00'$
$ST = 89.12'$	$T = 286.02'$	$LT = 112.54'$
	$R = 1,910.00'$	$ST = 87.91'$
	$e = 7.0\%$	
	$RUNOFF = SEE$ PLANS	
	$DS = 60$ MPH	

PROJECT REFERENCE NO. 1-2513AA/AB	SHEET NO. 5
ROADWAY DESIGN ENGINEER BARRY C. SMITH 034375	HYDRAULICS ENGINEER MATTHEW L. HARVEY 053425
DocuSign Barry Smith 2/8/2024	DocuSign Matt Harvey 2/8/2024
DOCUMENT NOT CONSIDERED FINAL UNLESS ALL SIGNATURES COMPLETED	
KCI ASSOCIATES OF N.C., P.A. 4505 Falls of Noce Road, Suite 400 Raleigh, NC 27609-4270 Phone (919) 783-9214 NC Firm License No. C-0764	
1223 Jones Franklin Rd. Raleigh, N.C. 27606 License No. F-0377 Bus: 919 851 8077 Fax: 919 851 8107	
TRANSPORTATION PLANNING/DESIGN - BRIDGE/STRUCTURE DESIGN CIVIL/SITE DESIGN - GIS/GPS - CONSTRUCTION OBSERVATION	



FOR -Y_LT- & -Y_RT- PROFILES SEE SHEET 15
 FOR -Y5RPB- PROFILE SEE SHEET 23
 FOR -Y5RPC- PROFILE SEE SHEET 24

5/7/14/99
 12/1/2023
 1-2513AA_rdy_psh_5.dgn
 tulley.coc@kci.com