

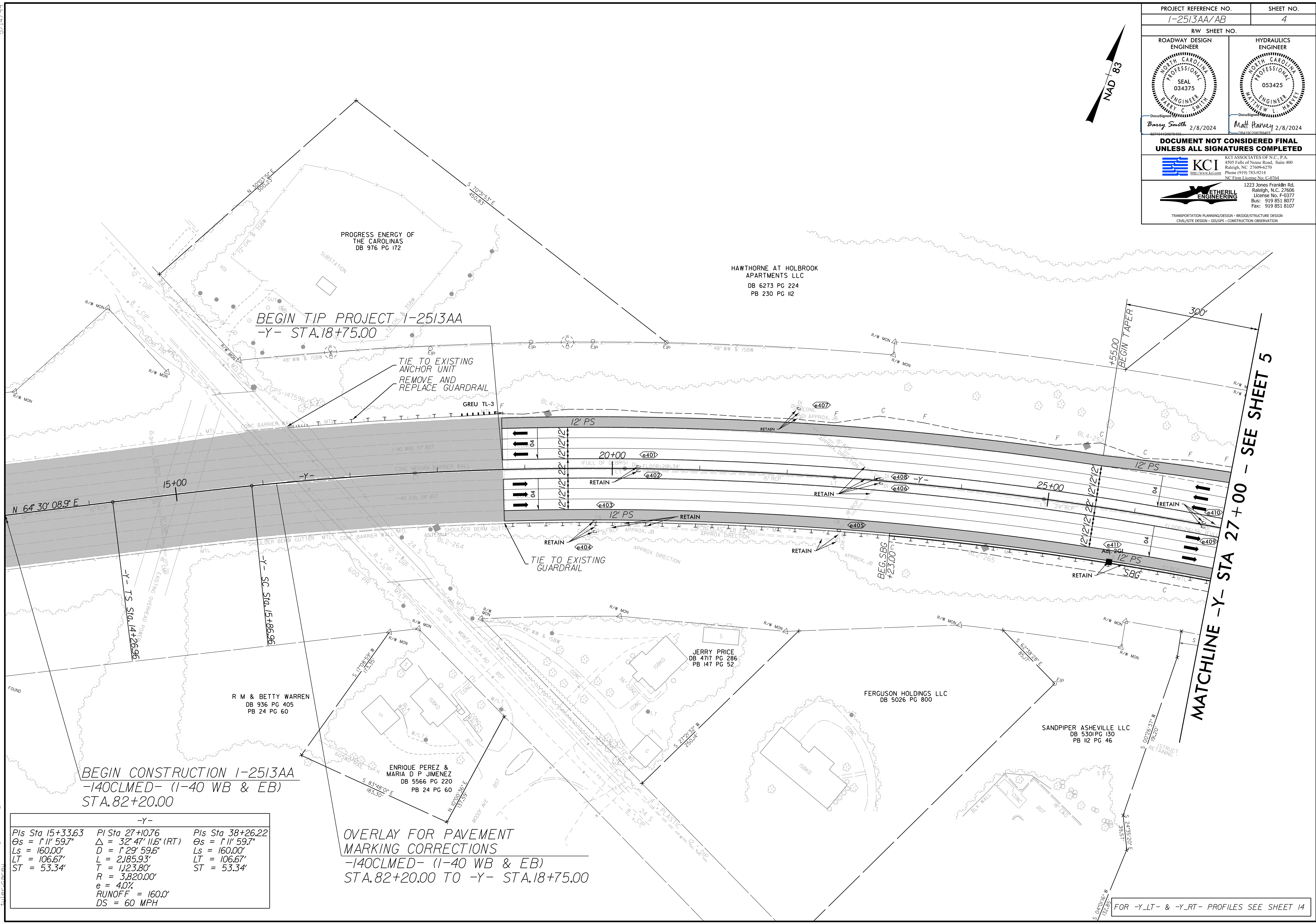
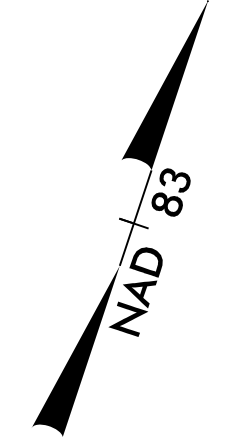


5/14/24

PROJECT REFERENCE NO. 1-2513AA/AB		SHEET NO. 4	
RW SHEET NO.			
ROADWAY DESIGN ENGINEER BARRY C. SMITH SEAL 034375 NORTH CAROLINA PROFESSIONAL ENGINEER		HYDRAULICS ENGINEER MATTHEW L. HALEY SEAL 053425 NORTH CAROLINA PROFESSIONAL ENGINEER	
Barry Smith 2/8/2024		Matthew Haley 2/8/2024	
DOCUMENT NOT CONSIDERED FINAL UNLESS ALL SIGNATURES COMPLETED			
 KCI KCI ASSOCIATES OF N.C., P.A. 4505 Falls of Noce Road, Suite 400 Raleigh, NC 27609-6270 Phone (919) 783-9214 NC Firm License No. C-0764		 ETHERILL ENGINEERING 1223 Jones Franklin Rd. Raleigh, N.C. 27606 License No. F-3377 Bus: 919 851 8077 Fax: 919 851 8107	
TRANSPORTATION PLANNING/DESIGN - BRIDGE/STRUCTURE DESIGN CIVIL/SITE DESIGN - GIS/GPS - CONSTRUCTION OBSERVATION			



-Y-		
Pls Sta 15+33.63	Pls Sta 27+07.6	Pls Sta 38+26.22
$\Theta_s = 1' 11'' 59.7''$	$\Delta = 32' 47'' 11.6'' (RT)$	$\Theta_s = 1' 11'' 59.7''$
$L_s = 160.00'$	$D = 1' 29'' 59.6''$	$L_s = 160.00'$
$LT = 106.67'$	$L = 2,185.93'$	$LT = 106.67'$
$ST = 53.34'$	$T = 1,123.80'$	$ST = 53.34'$
	$R = 3,820.00'$	
	$e = 4.0\%$	
	$RUNOFF = 160.0'$	
	$DS = 60 MPH$	

OVERLAY FOR PAVEMENT
MARKING CORRECTIONS
-140CLMED- (I-40 WB & EB)
STA.82+20.00 TO -Y- STA.18+75.00

FOR -Y-LT- & -Y-RT- PROFILES SEE SHEET 14

12/1/2023 1-2513AA_rdy_psh_4.dgn
tulac.cobal