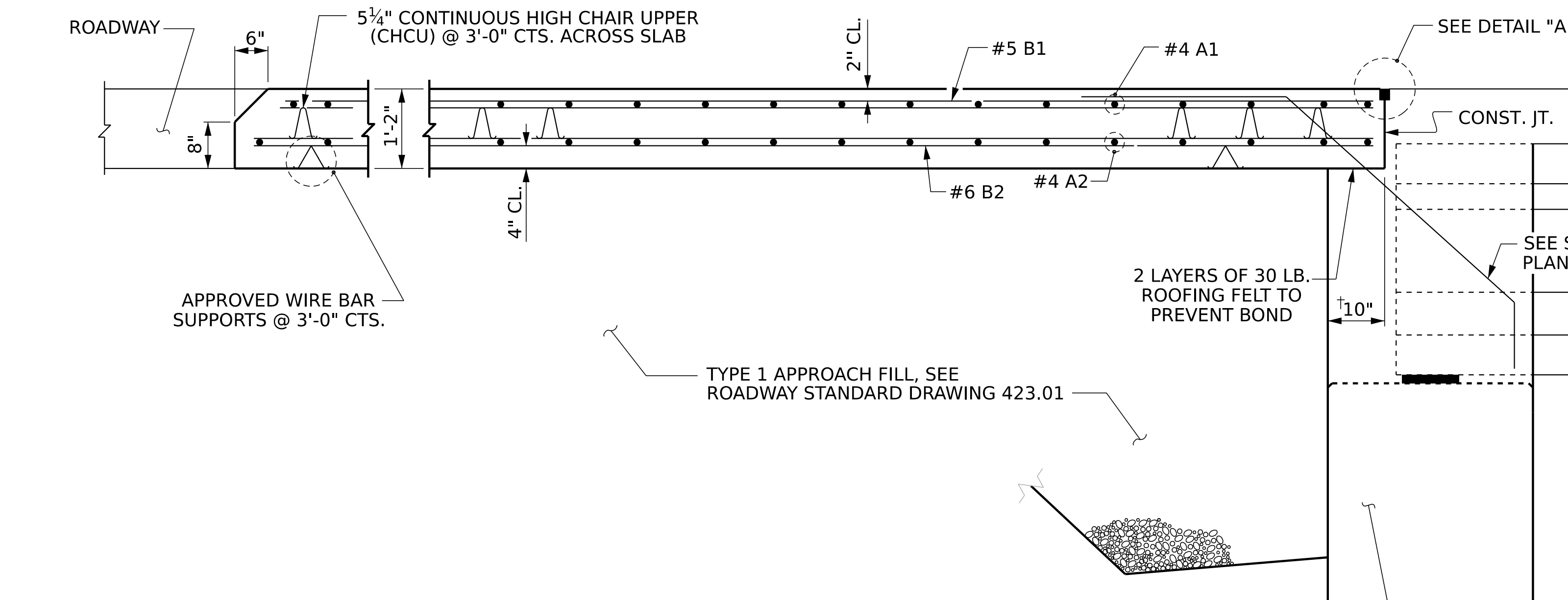
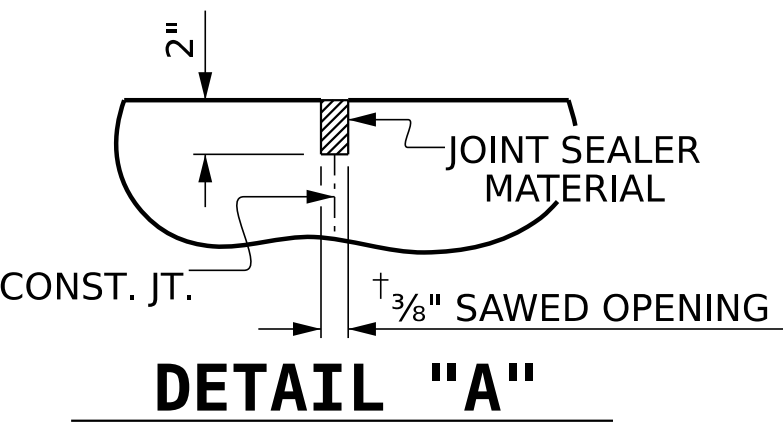


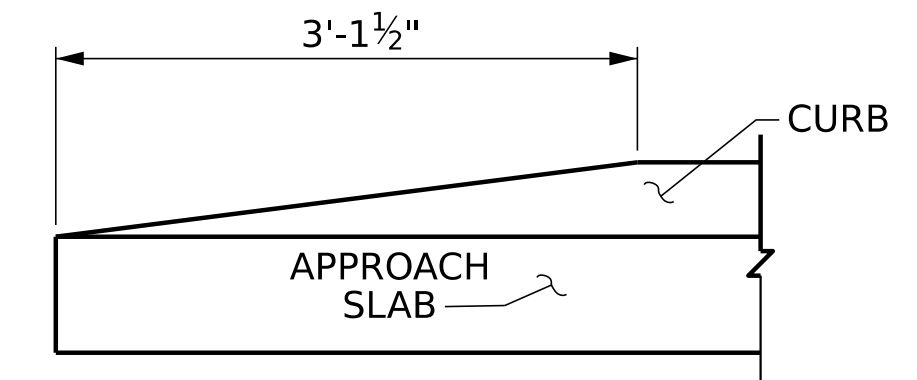
PLAN @ END BENT 1 **PLAN @ END BENT 2**
 DIMENSIONS SHOWN ARE TYPICAL FOR BOTH APPROACH SLABS



SECTION THRU SLAB



DETAIL "A"



END OF CURB WITHOUT SHOULDER BERM GUTTER

† NORMAL TO END BENT

NOTES
 FOR BRIDGE APPROACH FILL, SEE ROADWAY PLANS.
 APPROACH SLAB SHALL NOT BE CONSTRUCTED PRIOR TO COMPLETION OF THE BRIDGE DECK.
 AREA BETWEEN THE WINGWALL AND APPROACH SLAB SHALL BE GRADED TO DRAIN THE WATER AWAY FROM THE FILL FACE OF THE BRIDGE AND SHALL BE PAVED. SEE ROADWAY PLANS.
 THE JOINT OPENING AT THE APPROACH SLAB/DECK INTERFACE SHALL BE SAWED NO MORE THAN 12 HOURS AFTER THE APPROACH SLAB IS CAST. THE JOINT SHALL BE CLEANED OF ALL DEBRIS BEFORE THE SEALANT IS APPLIED. THE JOINT SEALER MATERIAL SHALL CONFORM TO THE REQUIREMENTS OF SECTION 1028-3 OF THE STANDARD SPECIFICATIONS.
 AT THE CONTRACTORS OPTION "TYPE 1A - ALTERNATE APPROACH FILL" (ROADWAY STD. 423.02) MAY BE CONSTRUCTED AT NO ADDITIONAL COST TO THE DEPARTMENT IN LIEU OF "TYPE 1 - APPROACH FILL".

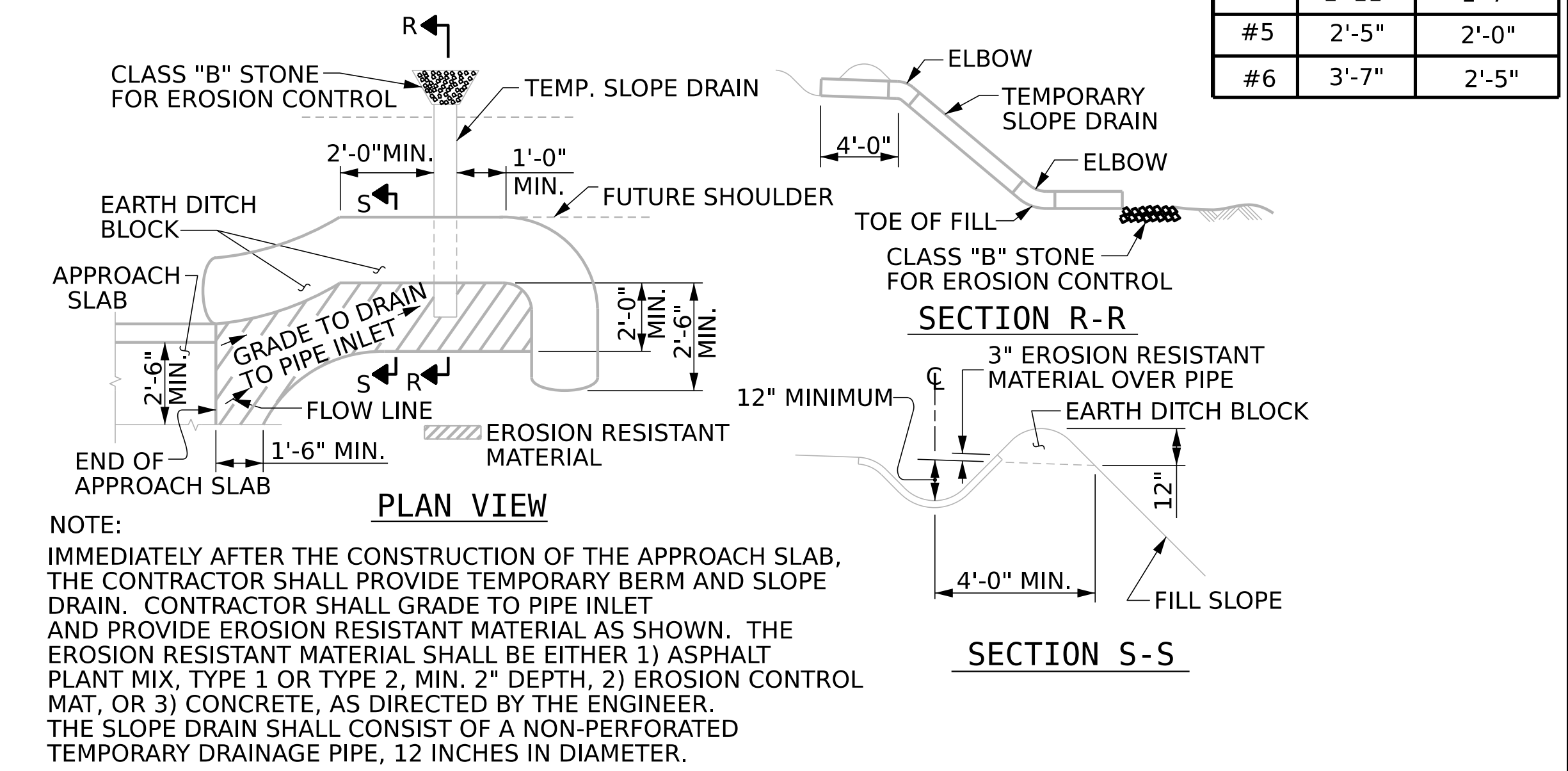
BILL OF MATERIAL
 FOR ONE APPROACH SLAB
 (2 REQ'D)

| BAR | NO. | SIZE | TYPE | LENGTH | WEIGHT |
|----------------------------------|-----|------|------|--------|------------|
| *A1 | 52 | #4 | STR | 21'-6" | 747 |
| A2 | 52 | #4 | STR | 21'-5" | 744 |
| *B1 | 82 | #5 | STR | 24'-2" | 2,067 |
| B2 | 82 | #6 | STR | 24'-8" | 3,038 |
| REINFORCING STEEL | | | | | 3,782 LBS. |
| * EPOXY COATED REINFORCING STEEL | | | | | 2,814 LBS. |
| CLASS AA CONCRETE | | | | | 44.5 C. Y. |

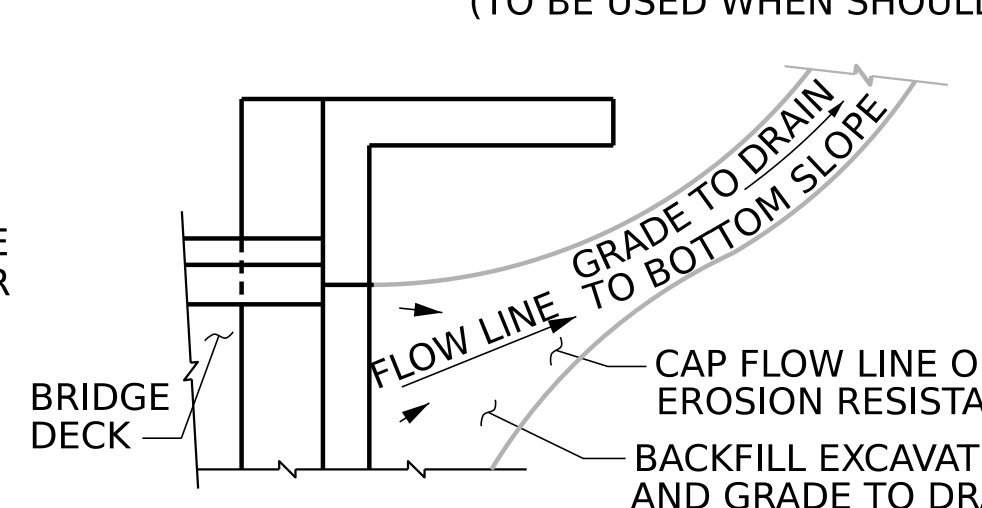
* THESE BARS ARE EPOXY COATED

SPLICE LENGTHS

| BAR SIZE | EPOXY COATED | UNCOATED |
|----------|--------------|----------|
| #4 | 1'-11" | 1'-7" |
| #5 | 2'-5" | 2'-0" |
| #6 | 3'-7" | 2'-5" |

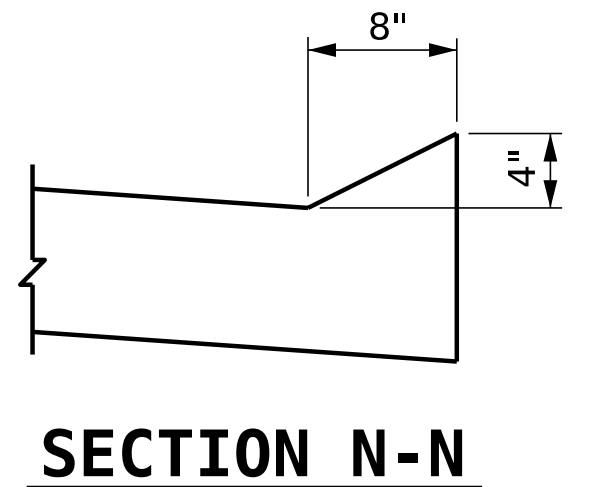


TEMPORARY BERM AND SLOPE DRAIN DETAILS
 (TO BE USED WHEN SHOULDER BERM GUTTER IS REQUIRED)



NOTE: IF THE APPROACH SLAB IS NOT CONSTRUCTED IMMEDIATELY AFTER THE BACKFILLING OF THE END BENT EXCAVATION, GRADE TO DRAIN TO THE BOTTOM OF THE SLOPE AND PROVIDE EROSION RESISTANT MATERIAL, SUCH AS FIBERGLASS ROVING OR AS DIRECTED BY THE ENGINEER TO PREVENT SOIL EROSION AND TO PROTECT THE AREA ADJACENT TO THE STRUCTURE. THE CONTRACTOR WILL BE REQUIRED TO REMOVE THESE MATERIALS PRIOR TO CONSTRUCTION OF THE APPROACH SLAB.

TEMPORARY DRAINAGE DETAIL



SECTION N-N

PROJECT NO. BR-0062
ANSON COUNTY
 STATION: 18+07.50 -L-

| | |
|----------------------------------|--------------------|
| ASSEMBLED BY: J. PENDERGRAFT/DAH | DATE: 11-23 |
| CHECKED BY: G. GILLAND | DATE: 11-23 |
| DRAWN BY: TLA 10/05 | REV. 12/17 MAA/THC |
| CHECKED BY: GM 5/06 | REV. 06/19 BNB/THC |
| | REV. 07/23 BNB/SNM |

ENGINEER OF RECORD
 1/22/2024

 Designed by:

 1223 Jones Franklin Rd.
 Raleigh, N.C. 27606
 Bus: 919 851 8077
 Fax: 919 851 8107
 LICENSE NO. F-0377

STATE OF NORTH CAROLINA
 DEPARTMENT OF TRANSPORTATION
 RALEIGH

STANDARD BRIDGE APPROACH SLAB FOR INTEGRAL ABUTMENT WITH FLEXIBLE PAVEMENT

| REVISIONS | | | | | | SHEET NO. |
|-----------|-----|-------|-----|-----|-------|--------------|
| NO. | BY: | DATE: | NO. | BY: | DATE: | S-35 |
| 1 | | | 3 | | | TOTAL SHEETS |
| 2 | | | 4 | | | 35 |

DOCUMENT NOT CONSIDERED FINAL UNLESS ALL SIGNATURES COMPLETED

PA:2020.20130.01_BR-0062_Structures\DCM\BR-0062_SD_AS_030014.dgn
 1/19/2024 9:55:08 AM