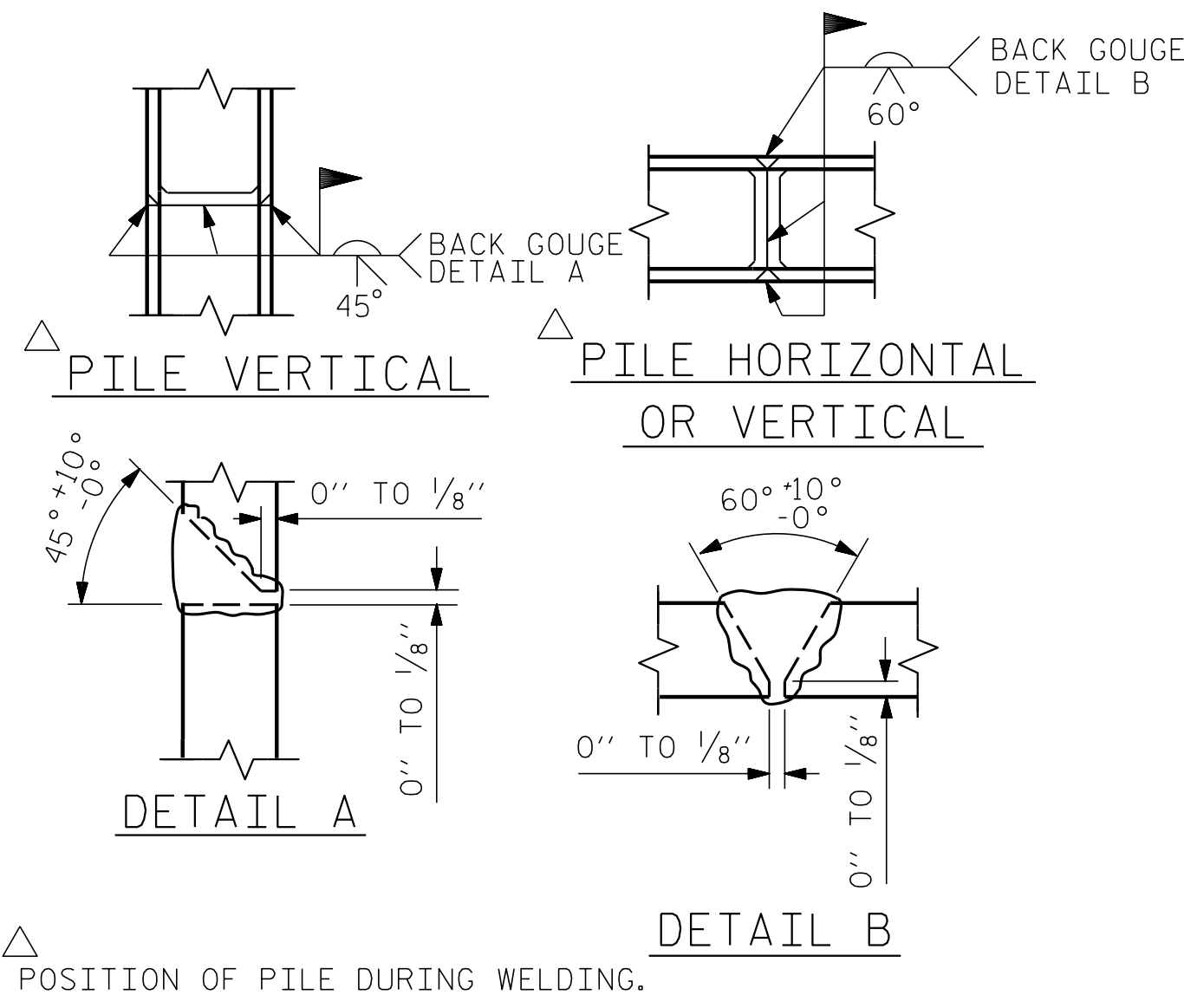


BAGGED STONE AND PIPE SHALL BE PLACED IMMEDIATELY AFTER COMPLETION OF END BENT EXCAVATION. PIPE MAY BE EITHER CONCRETE, CORRUGATED STEEL, CORRUGATED ALUMINUM ALLOY, OR CORRUGATED PLASTIC. PERFORATED PIPE WILL NOT BE ALLOWED.

BAGGED STONE SHALL REMAIN IN PLACE UNTIL THE ENGINEER DIRECTS THAT IT BE REMOVED. THE CONTRACTOR SHALL REMOVE AND DISPOSE OF SILT ACCUMULATIONS AT BAGGED STONE WHEN SO DIRECTED BY THE ENGINEER. BAGS SHALL BE REMOVED AND REPLACED WHENEVER THE ENGINEER DETERMINES THAT THEY HAVE DETERIORATED AND LOST THEIR EFFECTIVENESS.

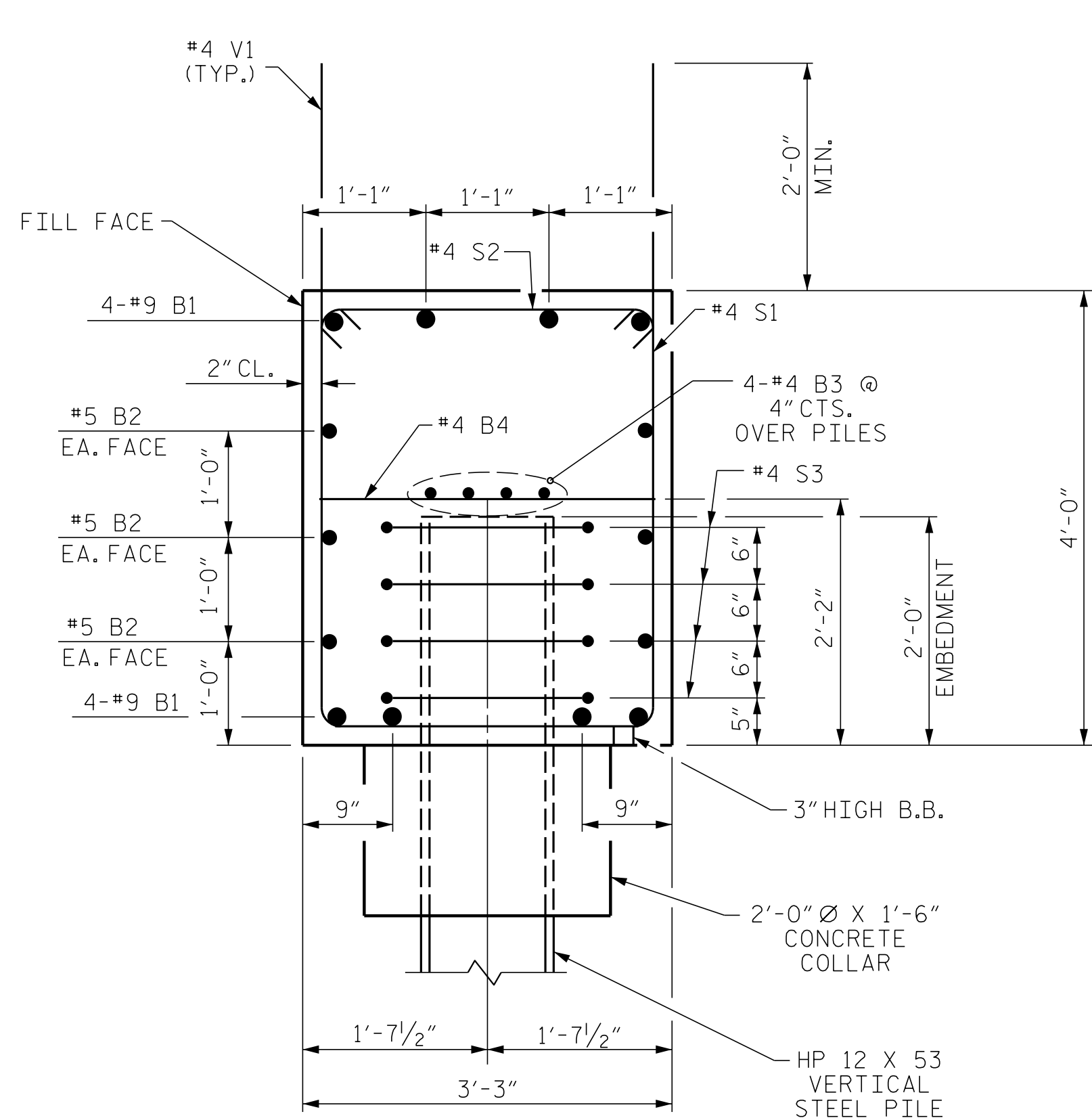
NO SEPARATE PAYMENT WILL BE MADE FOR THIS WORK AND THE ENTIRE COST OF THIS WORK SHALL BE INCLUDED IN THE UNIT CONTRACT PRICE BID FOR THE SEVERAL PAY ITEMS.

### TEMPORARY DRAINAGE AT END BENT

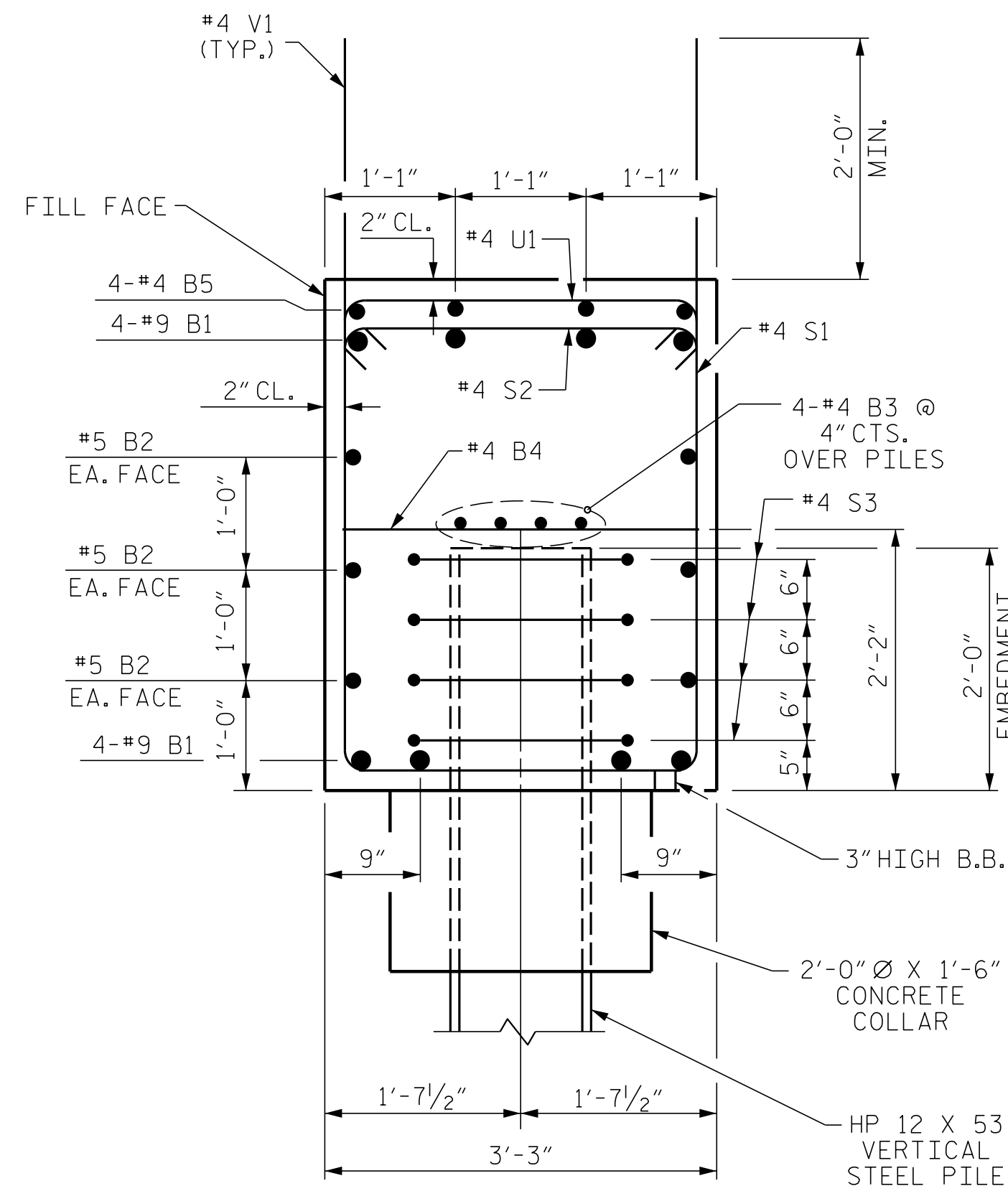


### PILE SPLICE DETAILS

BAR TYPES					BILL OF MATERIAL						
					END BENT No. 2						
BAR	NO.	SIZE	TYPE	LENGTH	WEIGHT	BAR	NO.	SIZE	TYPE	LENGTH	WEIGHT
B1	8	#9		51'-3"	1,394	B1	8	#9		51'-3"	1,394
B2	6	#5	STR	48'-11"	306	B2	6	#5	STR	48'-11"	306
B3	8	#4	STR	25'-8"	137	B3	8	#4	STR	25'-8"	137
B4	12	#4	STR	2'-11"	23	B4	12	#4	STR	2'-11"	23
B5	4	#4	STR	2'-8"	7	B5	4	#4	STR	2'-8"	7
H1	24	#5		13'-3"	332	H1	24	#5		13'-3"	332
S1	50	#4	3	10'-11"	365	S1	50	#4	3	10'-11"	365
S2	50	#4	4	3'-8"	122	S2	50	#4	4	3'-8"	122
S3	24	#4	5	6'-6"	104	S3	24	#4	5	6'-6"	104
U1	3	#4	6	5'-11"	12	U1	3	#4	6	5'-11"	12
V1	132	#4	STR	6'-0"	529	V1	132	#4	STR	6'-0"	529
REINFORCING STEEL					3,331 LBS.						
CLASS A CONCRETE BREAKDOWN											
POUR #1 CAP, CONC. COLLARS & LOWER PART OF WINGS					28.1 C.Y.						
TOTAL CLASS A CONCRETE					28.1 C.Y.						

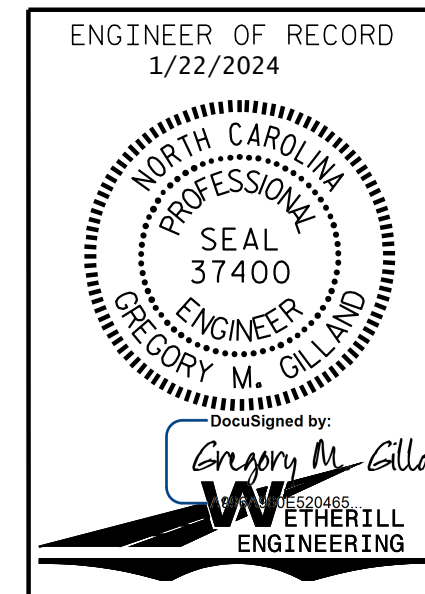


SECTION A-A



SECTION B-B

PROJECT NO. BR-0062  
 ANSON COUNTY  
 STATION: 18+07.50 -L-  
 SHEET 3 OF 3



STATE OF NORTH CAROLINA  
 DEPARTMENT OF TRANSPORTATION  
 RALEIGH  
 SUBSTRUCTURE  
 END BENT No. 2

REVISIONS						SHEET NO.
NO.	BY:	DATE:	NO.	BY:	DATE:	S-33
1			3			TOTAL SHEETS
2			4			35

DOCUMENT NOT CONSIDERED FINAL  
 UNLESS ALL SIGNATURES COMPLETED

1223 Jones Franklin Rd.  
 Raleigh, N.C. 27606  
 Bus: 919 851 8077  
 Fax: 919 851 8107  
 LICENSE NO. F-0377

PA:2020\20130.01\_BR-0062\Structures\DCM\BR-0062\_SD\_EB\_0300 14.dgn  
 1/19/2024 9:44:42 AM

DRAWN BY: D. HODGE DATE: 5/23  
 CHECKED BY: G. GILLAND DATE: 10/23